

VICINITY MAP
SCALE: 1" = ~6000FT

COUNTY OF HUMBOLDT DEPARTMENT OF PUBLIC WORKS PROJECT PLANS FOR CONSTRUCTION OF **PUBLIC WORKS MEASURE O - 2026** **CEDAR STREET (3K280) PM 0.32-0.72 AND REDWOOD STREET (3K260) PM 0.00-0.23**

INDEX OF SHEETS

1	COVER SHEET, SHEET INDEX, AND MAPS
2	SUMMARY OF QUANTITIES
3-4	ROADWAY TYPICAL SECTIONS
5	MONUMENT PRESERVATION
6-9	CEDAR LAYOUT AND PROFILE
10-11	REDWOOD LAYOUT AND PROFILE
12	DRAINAGE PLAN
13-15	CURB RAMP ENLARGED DETAILS
16-18	SIGNAGE AND STRIPING PLANS
19-20	CONSTRUCTION DETAILS

NOTES

1. THE CONTRACTOR SHALL HAVE A CLASS "A" LICENSE FOR THIS PROJECT.
2. PROJECT PLANS AND SPECIAL PROVISIONS TO BE SUPPLEMENTED BY THE 2025 STATE OF CALIFORNIA DEPARTMENT OF TRANSPORTATION STANDARD PLANS, STANDARD SPECIFICATIONS, (SEE APPLICABLE STANDARD PLAN LIST IN SPECIAL PROVISIONS)

GHD Inc.
718 Third Street
Eureka California 95501 USA
T 1 707 443 8326 F 1 707 444 8330 W www.ghd.com

ROAD NAME:	CEDAR STREET AND REDWOOD STREET	DESIGN SECTION:	COUNTY OF HUMBOLDT DEPARTMENT OF PUBLIC WORKS
ROAD NO.:	3K280 & 3K260 MILE POST: 0.32-0.72 & 0.00-0.23	DESIGNED BY:	J.VANEGAS
PROJECT NO.:	N/A	DRAWN BY:	T.BUSH
CONTRACT NO.:	342006	REVIEWED BY:	J.WOLF
DRAWING FILE NAME:	12695149-GHD-00-00-TTB-GN-D001.dwg	APPROVED BY:	J.WOLF
PLOT DATE:	6/9/2026	REVISION DATE:	

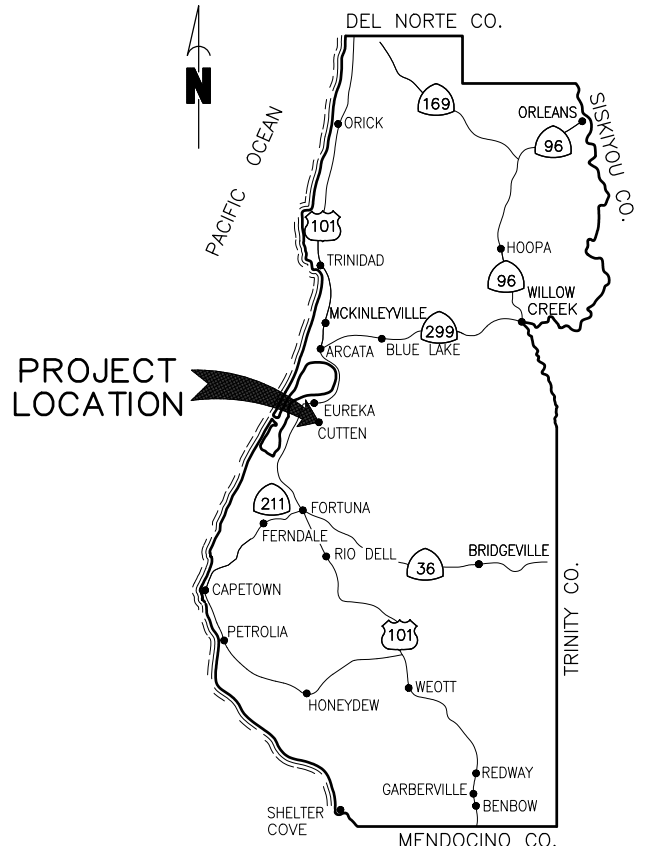
SHEET	1
OF	20
COVER SHEET, SHEET INDEX, AND MAPS	

INDEX OF SHEETS

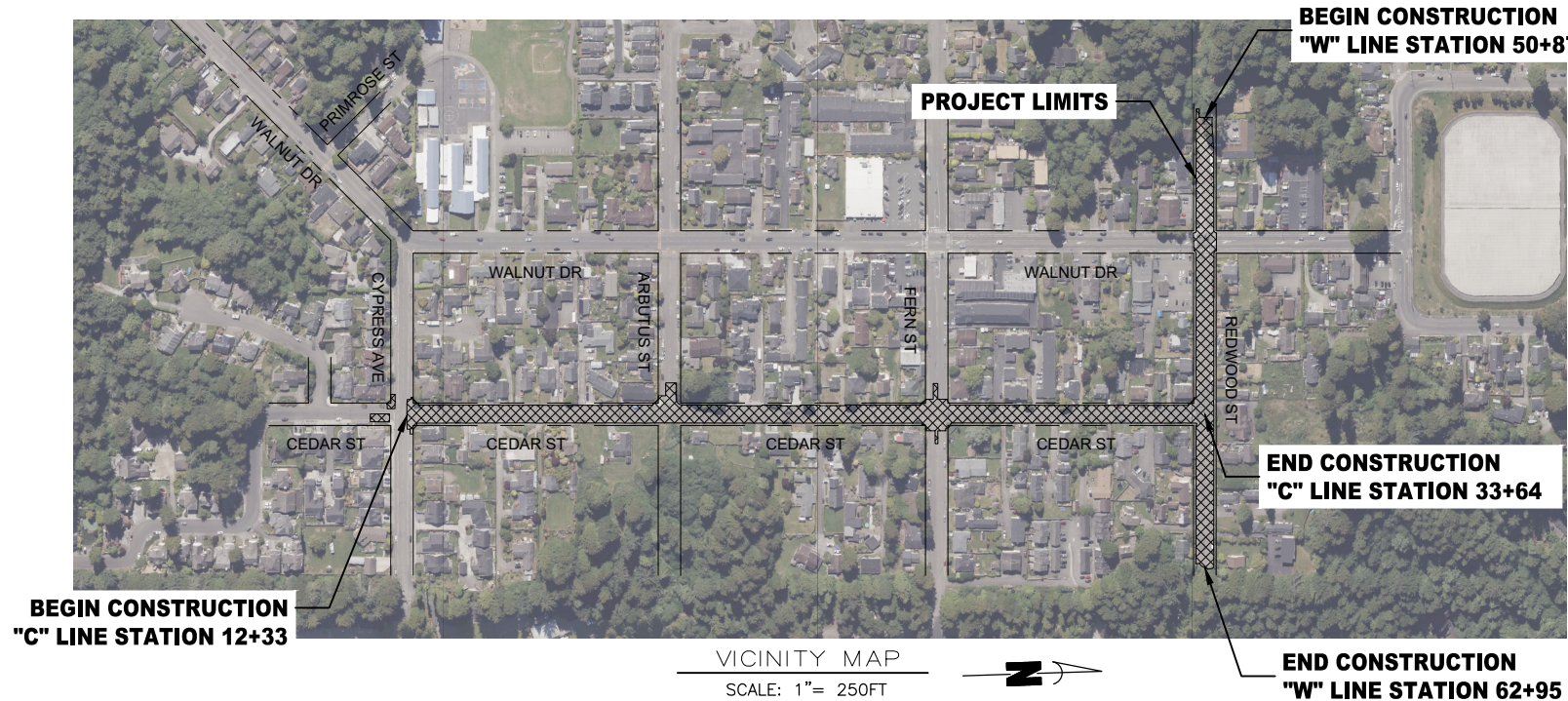
CEDAR ST
BEGIN PROJECT COORDINATES:
LAT: 40.765976°N
LONG: -124.141358°W
END PROJECT COORDINATES:
LAT: 40.771745°N
LONG: -124.141301°W



REDWOOD ST
BEGIN PROJECT COORDINATES:
LAT: 40.771820°N
LONG: -124.143933°W
END PROJECT COORDINATES:
LAT: 40.771777°N
LONG: -124.139822°W



LOCATION MAP
NOT TO SCALE



RECOMMENDED

Joshua A. Wolf
JOSHUA A. WOLF
RCE 70358, EXP. 9/30/2026

6/9/26
DATE



APPROVED

Tony R. Seghetti
TONY R. SEGHETTI
RCE 63714, EXP. 9/30/2026

6/9/2026
DATE





GHD Inc.
718 Third Street
Eureka California 95501 USA
T 1 707 443 8326 F 1 707 444 8330 W www.ghd.com



BAR IS ONE INCH ON ORIGINAL DRAWING

IF NOT ONE INCH ON THIS SHEET, ADJUST SCALES ACCORDINGLY

ROAD NAME:	CEDAR STREET AND REDWOOD STREET
ROAD NO:	3K280 & 3K260 MILE POST: 0.32-0.72 & 0.00-0.23
PROJECT NO.:	N/A
CONTRACT NO.:	342006
DRAWING FILE NAME:	12695149-GHD-00-00-CAS-CI-D101.dwg
PLOT DATE:	6/9/2026
REVISION DATE:	

DESIGN SECTION	ENGINEERING
DESIGNED BY:	J. VANEGAS
DRAWN BY:	T. CINCEBEAUX
REVIEWED BY:	J. WOLF
APPROVED BY:	J. WOLF

COUNTY OF HUMBOLDT DEPARTMENT OF PUBLIC WORKS
CEDAR STREET AND REDWOOD STREET REHABILITATION
SUMMARY OF QUANTITIES

SHEET
2
OF
20

QUANTITIES

1	050136	Potholing (Utility Verification)	EA	2
2	120100	Traffic Control System	LS	1
3	130100	Job Site Management	LS	1
4	130201	Water Pollution Control Program	LS	1
5	170103	Clearing and Grubbing (LS)	LS	1
6	260203	Class 2 Aggregate Base (CY)	CY	40
7	390132	Hot Mix Asphalt (Type A)	TON	2855
8	394077	Place Hot Mix Asphalt Dike (Type F)	LF	75
9	394090A	Place Hot Mix Asphalt Speed Hump	EA	3
10	394090B	Place Hot Mix Asphalt Speed Bump	EA	1
11	398200A	Cold Plane and Reprocess Asphalt Concrete Pavement	SQYD	17074
12	510094A	Structural Concrete, Drainage Inlet (Type GO)	EA	2
13	641107	18" Plastic Pipe	LF	96
14	692307	18" Anchor Assembly	EA	1
15	710128	Remove Storm Drain	LF	96
16	710150	Remove Inlet	EA	2
17	723080	Rock Slope Protection (60 lb, Class II, Method B) (CY)	CY	12
18	730045A	Minor Concrete (Valley Gutter) (SQFT)	SQFT	1097
19	730070A	Detectable Warning Surface	EA	9
20	731623A	Minor Concrete (Curb Ramp) (Case A)	EA	8
21	731623C	Minor Concrete (Curb Ramp) (Case C)	EA	1
22	731850A	Remove Concrete (Curb, Gutter, Sidewalk, and Curb Ramp) (SQYD)	SQYD	171
23	750500A	Miscellaneous Metal (Type 24-12X Grate, Galvanized)	LB	478
24	780250	Adjust Monument Cover to Grade	EA	3
25	780433	Paint Curb (2-Coat)	LF	80
26	803020	Remove Fence	LF	67
27	800001A	Wood Fence	LF	15
28	800310A	Chain Link Fence	LF	28
29	810230	Pavement Marker (Retroreflective)	EA	112
30	820510	Reset Roadside Sign (One Post)	EA	7
31	820840	Roadside Sign - One Post	EA	16
32	840515	Thermoplastic Pavement Marking	SQFT	1285
33	840656	Paint Traffic Stripe (2-Coat)	LF	13388
34	846035	Remove Thermoplastic Pavement Marking	SQFT	40
35	999990	Mobilization	LS	1

Additive Option A				
A1	780254A	Adjust Access Box Frame and Cover (Water and Sewer)	EA	57
A2	780254B	Adjust Water Meter Box Frame and Cover	EA	3
A3	780254C	Adjust Gas Access Box Frame and Cover (Gas)	EA	7
A4	780258	Adjust Manhole Frame and Cover (Sewer)	EA	5

NOTE:

- SEE SHEETS 6-9 FOR PAVEMENT REMOVAL AND DEMOLITION LOCATIONS.



GHD Inc.
718 Third Street
Eureka California 96501 USA
T 1 707 443 8326 F 1 707 444 8330 W www.ghd.com



BAR IS ONE INCH ON ORIGINAL DRAWING

IF NOT ONE INCH ON THIS SHEET, ADJUST SCALES ACCORDINGLY

ROAD NAME:	CEDAR STREET AND REDWOOD STREET
ROAD NO:	3K280 & 3K260 MILE POST: 0.32-0.72 & 0.00-0.23
PROJECT NO.:	N/A
CONTRACT NO.:	342006
DRAWING FILE NAME:	12695149-GHD-00-00-RWY-CI-D001.dwg
PLOT DATE:	6/9/2026
REVISION DATE:	

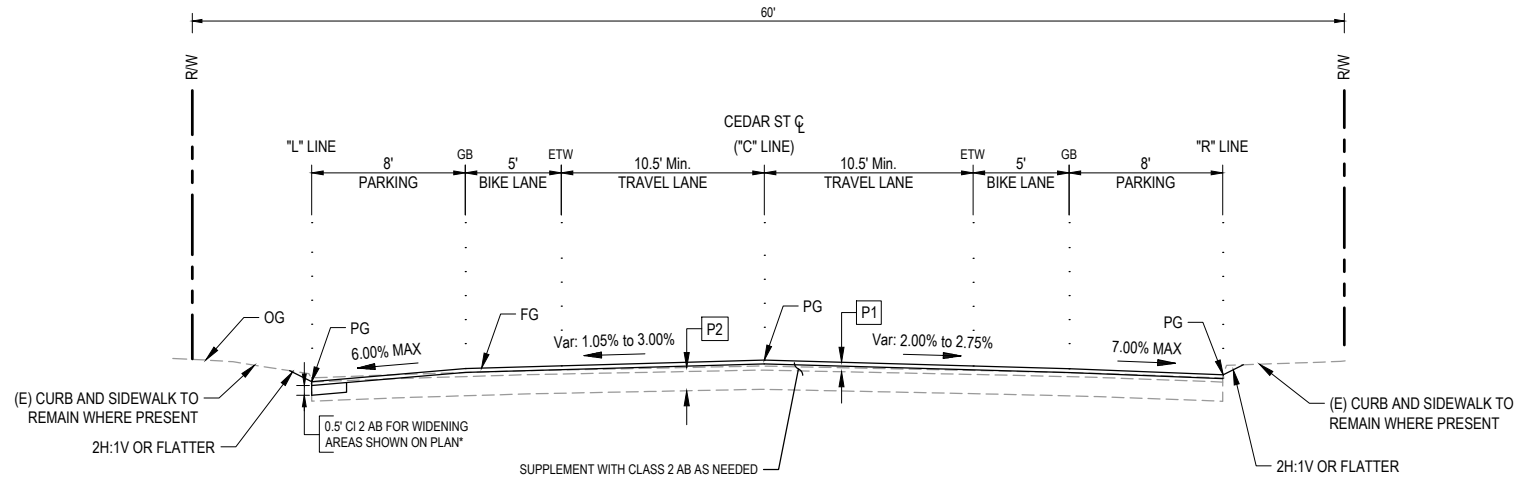
DESIGN SECTION	ENGINEERING
DESIGNED BY:	C.PROVO
DRAWN BY:	C.PROVO
REVIEWED BY:	J.WOLF
APPROVED BY:	J.WOLF

COUNTY OF HUMBOLDT DEPARTMENT OF PUBLIC WORKS
CEDAR STREET AND REDWOOD STREET REHABILITATION
ROADWAY TYPICAL SECTIONS 1

SHEET
3
OF
20

PAVEMENT STRUCTURAL SECTIONS

- P1** COLD PLANE PAVEMENT (0.25' DEPTH)
VARIABLE DEPTH CI 2 AB
0.25' HMA
- P2** EXISTING STRUCTURAL SECTION
0.08' - 0.21' HMA
0.67' - 1.00' AB



*EXCAVATION WILL NOT BE MEASURED SEPARATELY.

TYPICAL SECTION - CEDAR ST "C" LINE
STA 12+46 TO STA 33+40

NOT TO SCALE

NOTE:

- SEE SHEETS 10-11 FOR PAVEMENT REMOVAL AND DEMOLITION LOCATIONS.



GHD Inc.
718 Third Street
Eureka California 95501 USA
T 1 707 443 8326 F 1 707 444 8330 W www.ghd.com



BAR IS ONE INCH ON ORIGINAL DRAWING
IF NOT ONE INCH ON THIS SHEET, ADJUST SCALES ACCORDINGLY

ROAD NAME:	CEDAR STREET AND REDWOOD STREET
ROAD NO.:	3K280 & 3K260 MILE POST: 0.32-0.72 & 0.00-0.23
PROJECT NO.:	N/A
CONTRACT NO.:	342006
DRAWING FILE NAME:	12695149-GHD-00-00-RWY-CI-D001.dwg
PLOT DATE:	6/9/2026
REVISION DATE:	

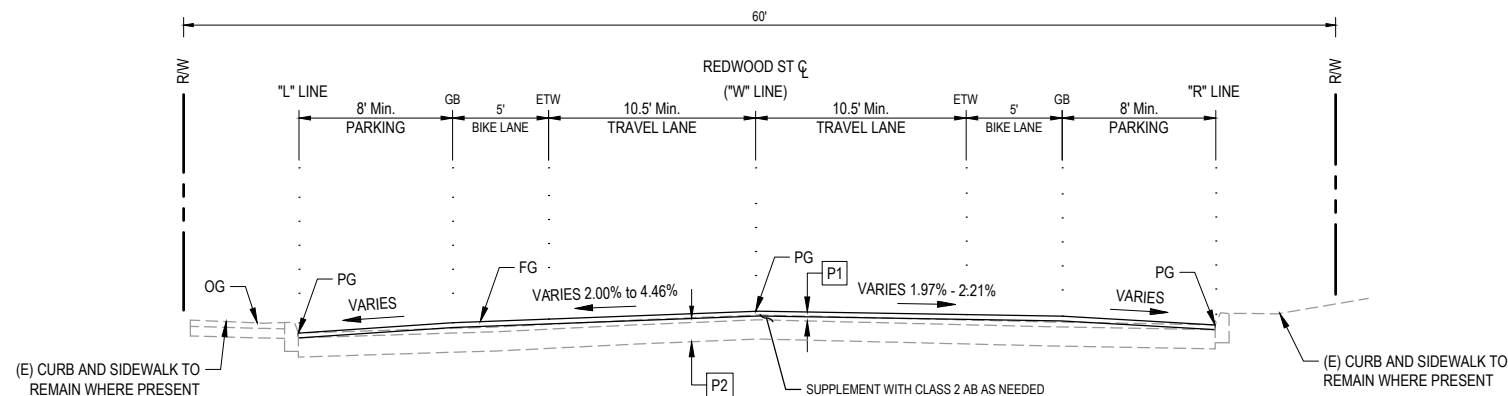
DESIGN SECTION	ENGINEERING
DESIGNED BY:	C.PROVO
DRAWN BY:	C.PROVO
REVIEWED BY:	J.WOLF
APPROVED BY:	J.WOLF

COUNTY OF HUMBOLDT DEPARTMENT OF PUBLIC WORKS
CEDAR STREET AND REDWOOD STREET REHABILITATION
ROADWAY TYPICAL SECTIONS 2

SHEET
4
OF
20

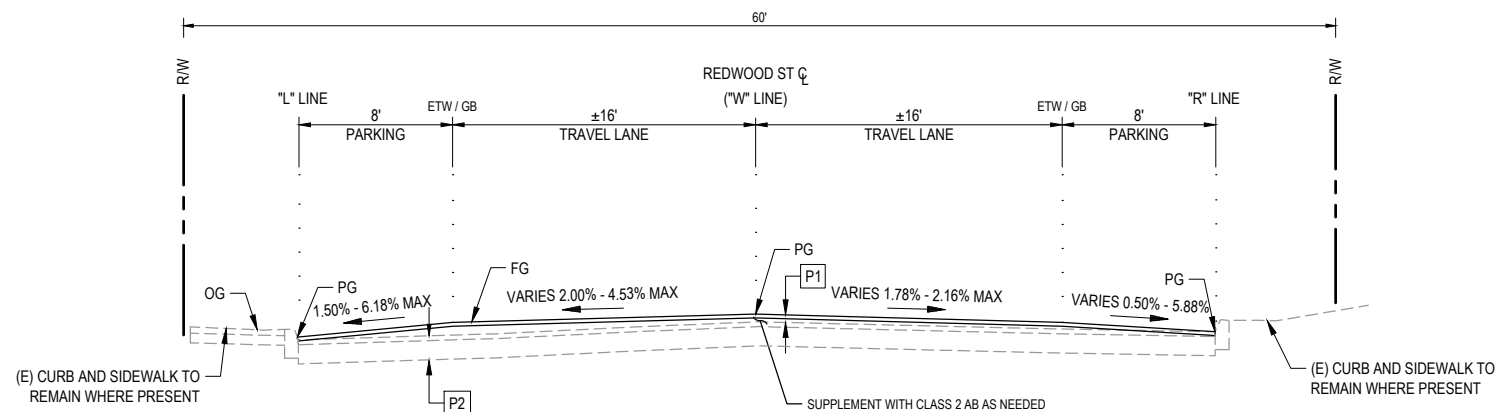
PAVEMENT STRUCTURAL SECTIONS

- P1** COLD PLANE PAVEMENT (0.30' DEPTH)
VARIABLE DEPTH CI 2 AB
0.25' HMA
- P2** EXISTING STRUCTURAL SECTION
0.21' - 0.25' HMA
0.50' - 1.00' AB



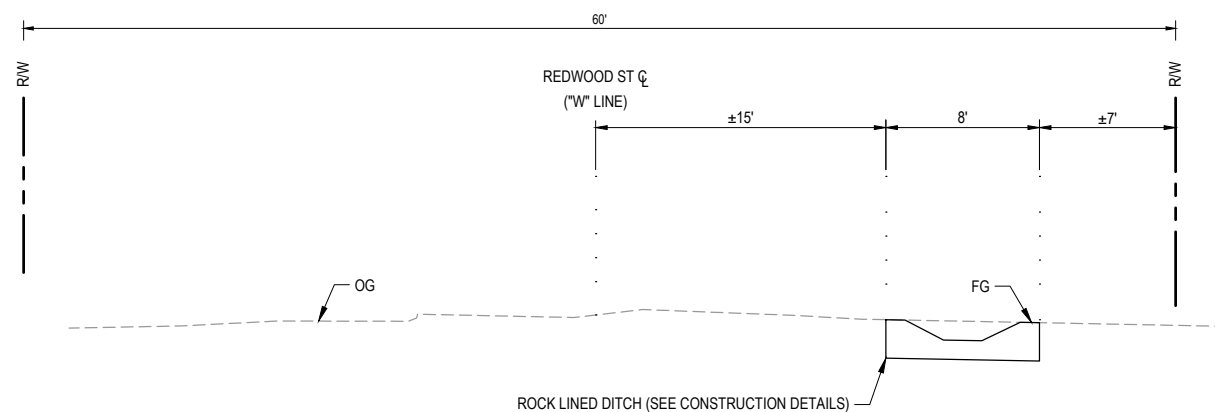
**TYPICAL SECTION - REDWOOD ST "W" LINE
STA 54+50 TO STA 58+50**

NOT TO SCALE



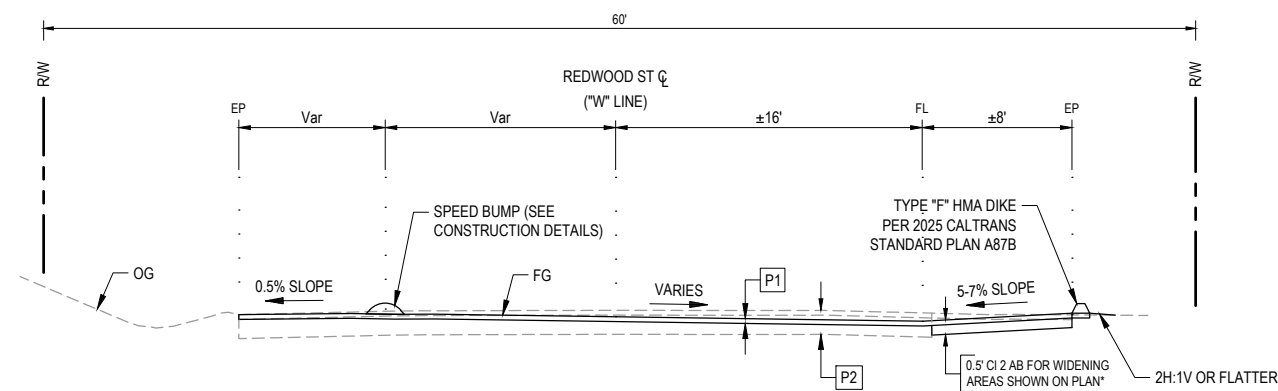
**TYPICAL SECTION - REDWOOD ST "W" LINE
STA 51+48 TO STA 53+78 & STA 58+50 TO STA 62+95**

NOT TO SCALE



**TYPICAL SECTION - REDWOOD ST "W" LINE
STA 50+64 TO STA 50+86**

NOT TO SCALE



**TYPICAL SECTION - REDWOOD ST "W" LINE
STA 50+86 TO STA 51+48**

NOT TO SCALE

*EXCAVATION WILL NOT BE MEASURED SEPARATELY.

SURVEY CONTROL NOTES

1. THE PURPOSE OF THIS SURVEY IS TO DETERMINE TOPOGRAPHY FOR ADA CURB RAMP REPLACEMENT AND CEDAR STREET PAVEMENT OVERLAY.
2. THERE MAY BE SYMBOLS SHOWN IN THE LEGEND THAT ARE NOT USED IN THIS SURVEY.
3. THE RIGHT OF WAY FOR THIS PROJECT IS 60', 30' EACH SIDE OF CENTERLINE, BASED ON BOOK 9 OF SURVEYS, PAGE 79.
4. BEARINGS SHOWN HEREON ARE BASED ON THE CALIFORNIA STATE PLANE COORDINATE SYSTEM (CCS83), ZONE 1, EPOCH 2010.00, HAVING A CONVERGENCE ANGLE OF -01°24'04" AT BENCHMARK NUMBER 167 BEING A SET 1/2" REBAR WITH A PINK PLASTIC PLUG STAMPED, "HUMCO CONTROL". THE BEARINGS FOR THIS PROJECT ARE IN GRID. HOWEVER THE DISTANCES HAVE BEEN SCALED TO GROUND DISTANCES, ROTATE GRID BEARINGS HEREON CLOCKWISE 01°24'04" TO OBTAIN GEODETIC (TRUE) BEARINGS. MULTIPLY GROUND DISTANCES HEREIN BY THE SCALE FACTOR OF .99989038 TO OBTAIN "GRID" DISTANCES.
5. ELEVATIONS ARE BASED ON A N ASSUMED ELEVATION OF 202.85' AT BENCHMARK NUMBER 167, BEING A SET 1/2" REBAR WITH A PINK PLASTIC PLUG STAMPED, "HUMCO CONTROL" WHICH BEARS S59°48'48"E 79.83' FROM THE CENTERLINE MONUMENT AT THE INTERSECTION OF FERN STREET AND WALNUT STREET. THE MONUMENT IS SET IN THE GRASS AT THE EASTERLY EDGE OF A PRIVATE SIDEWALK EASTERLY OF WALNUT STREET AND SOUTHERLY OF FERN STREET WHICH BORDERS A LAWN WITH A SIGN THAT STATES, "CUTTEN PLAZA" WESTERLY AND A PRIVATE PARKING LOT EASTERLY.
6. BOUNDARY LINES SHOWN ARE COMPILED FROM RECORD DATA AND ARE SHOWN FOR GENERAL ORIENTATION PURPOSES. THIS IS NOT A BOUNDARY SURVEY. COUNTY OF HUMBOLDT WILL ESTABLISH ACTUAL EDGE OF RIGHT-OF-WAY/BOUNDARY LINES PRIOR TO CONSTRUCTION.

UNDERGROUND UTILITY NOTES

1. UTILITY DATA SHOWN IS FROM UTILITY COMPANIES AND NOT FIELD VERIFIED BY GHD; ACCURACY NOT GUARANTEED. ONLY VISIBLE UTILITIES WERE LOCATED DURING SURVEY.
2. CALL UNDERGROUND SERVICE ALERT (USA) 1-800-642-2444 A MINIMUM OF 2 WORKING DAYS PRIOR TO ANY EXCAVATIONS.

GENERAL NOTES

1. CONTRACTOR MUST COMPLY WITH BUSINESS AND PROFESSIONS CODE SECTION 8771 (b) REGARDING REFERENCING, PRESERVING AND RECONSTRUCTING SURVEY MONUMENTS, WHETHER OR NOT SURVEY MONUMENTS ARE SHOWN IN THESE PLANS.
2. IF SURVEY MONUMENT IS DAMAGED BY CONTRACTORS OPERATIONS, CONTRACTOR SHALL REPLACE SURVEY MONUMENT AT CONTRACTORS EXPENSE.

LEGEND

- FOUND MONUMENT
- ⊕ CONTROL POINT
- RIGHT OF WAY LINE
- - - ROAD CENTERLINE
- - - ALIGNMENT LINE



GHD Inc.
718 Third Street
Eureka California 95501 USA
T 1 707 443 8326 F 1 707 444 8330 W www.ghd.com



BAR IS ONE INCH ON ORIGINAL DRAWING
IF NOT ONE INCH ON THIS SHEET, ADJUST SCALES ACCORDINGLY

ROAD NAME:	CEDAR STREET AND REDWOOD STREET
ROAD NO.:	3K280 & 3K260 MILE POST: 0.32-0.72 & 0.00-0.23
PROJECT NO.:	N/A
CONTRACT NO.:	342006
DRAWING FILE NAME:	12695149-GHD-00-00-CTL-CI-D101.dwg
PLOT DATE:	6/9/2026
REVISION DATE:	

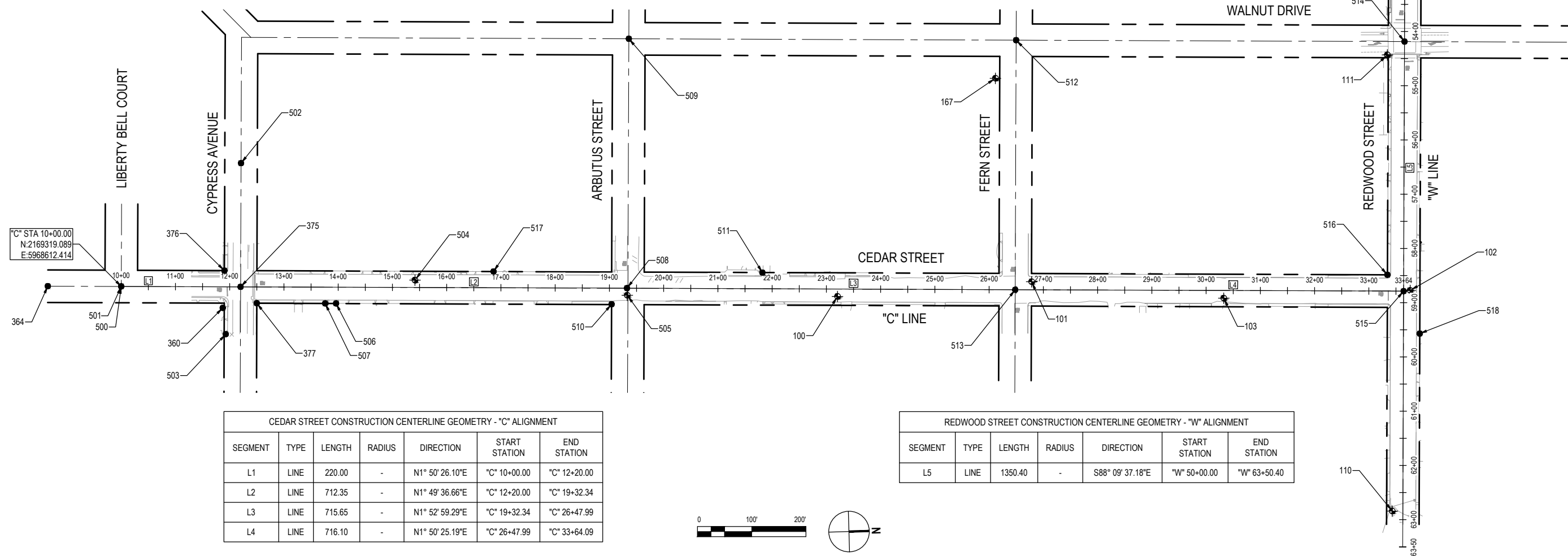
DESIGN SECTION:	ENGINEERING
DESIGNED BY:	C.PROVO
DRAWN BY:	C.PROVO
REVIEWED BY:	J.WOLF
APPROVED BY:	J.WOLF

COUNTY OF HUMBOLDT DEPARTMENT OF PUBLIC WORKS
CEDAR STREET AND REDWOOD STREET REHABILITATION
MONUMENT PRESERVATION

SHEET
5
OF
20

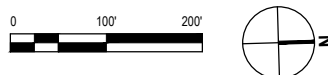
MONUMENT PRESERVATION TABLE				
POINT #	EASTINGS	NORTHINGS	ELEVATION	DESCRIPTION
100	5968668.66	2170638.43	206.34	CP/MAG&TAG HUMCO DPW CONTROL
101	5968651.73	2170996.97	204.16	CP/MAG&TAG HUMCO DPW CONTROL
102	5968687.64	2171694.10	193.80	CP/MAG&TAG HUMCO DPW CONTROL
103	5968692.13	2171350.05	198.72	CP/MAG&TAG HUMCO DPW CONTROL
110	5969093.33	2171649.46	193.31	CP/80D&TAG HUMCO DPW CONTROL
111	5968252.51	2171664.41	192.88	CP/MAG&TAG HUMCO DPW CONTROL
112	5968031.42	2171715.29	188.69	CP/MAG&TAG HUMCO DPW CONTROL
167	5968274.95	2170940.95	202.86	SET 1/2" REBAR & PPC-HUMCO CONTROL
360	5968657.38	2169504.94	206.48	SET 1/2" REBAR & PPC-HUMCO SURVEY
364	5968608.04	2169183.72	201.05	FD 2-1/2" BRASS CAP LS4446
375	5968619.48	2169538.97	206.71	FD R.R SPIKE
376	5968588.70	2169509.99	205.55	FD 1/2" IP NO PLUG
377	5968650.48	2169567.99	207.35	FD 1/2" IP YPP LS4829
500	5968612.41	2169319.07	203.20	CHK 363 FD 2-1/2" BRASS CAP LS4446
501	5968612.41	2169319.09	201.74	FD/ 3/4" IN BRASS PIN ILLEGIBLE
502	5968391.63	2169546.32	201.93	FD/ 3/4" IN BRASS PIN ILLEGIBLE
503	5968705.89	2169509.17	207.12	FD/ 3/4" IN BRASS TAG STAMPED
504	5968616.29	2169860.71	208.32	CP/MAG&TAG HUMCO DPW CONTROL
505	5968655.36	2170251.07	208.49	CP/MAG&TAG HUMCO DPW CONTROL
506	5968655.12	2169714.01	207.94	FD/ 1/2" IN IP W/ CAP STAMPED "O'HERN LS 4829"
507	5968654.48	2169693.91	207.78	FD/ 1/2" IN IP W/ CAP STAMPED "O'HERN LS 4829"

MONUMENT PRESERVATION TABLE				
POINT #	EASTINGS	NORTHINGS	ELEVATION	DESCRIPTION
508	5968642.19	2170250.96	208.75	FD/ R.R SPIKE
509	5968182.89	2170267.47	205.53	FD/ CLMON 1/4" IN RBR IN WELL
510	5968671.02	2170221.79	208.45	FD/ 1/2" IN IP NO ID
511	5968620.70	2170501.25	207.66	FD/ 1/2" IN IP W/ CAP STAMPED "RCE 23681"
512	5968205.86	2170981.10	201.53	FD/ CL MON PIN IN 6X6 CNC IN WELL
513	5968665.71	2170966.22	204.81	FD/ R.R SPIKE
514	5968228.92	2171696.72	191.96	FD/ CL MON PIN IN 6X6 CNC IN WELL
515	5968688.70	2171681.95	194.03	FD/ R.R SPIKE
516	5968657.59	2171652.83	194.39	FD/ 1/2" IN IP W/ CAP STAMPED "LS 3797"
517	5968604.56	2170005.95	209.63	FD/ 3/4" IN IP NO ID
518	5968767.73	2171709.46	193.87	FD 3/4" IN IP W/ AL CAP STAMPED "OMSBERG & CO LS 4446"



CEDAR STREET CONSTRUCTION CENTERLINE GEOMETRY - "C" ALIGNMENT						
SEGMENT	TYPE	LENGTH	RADIUS	DIRECTION	START STATION	END STATION
L1	LINE	220.00	-	N1° 50' 26.10"E	"C" 10+00.00	"C" 12+20.00
L2	LINE	712.35	-	N1° 49' 36.66"E	"C" 12+20.00	"C" 19+32.34
L3	LINE	715.65	-	N1° 52' 59.29"E	"C" 19+32.34	"C" 26+47.99
L4	LINE	716.10	-	N1° 50' 25.19"E	"C" 26+47.99	"C" 33+64.09

REDWOOD STREET CONSTRUCTION CENTERLINE GEOMETRY - "W" ALIGNMENT						
SEGMENT	TYPE	LENGTH	RADIUS	DIRECTION	START STATION	END STATION
L5	LINE	1350.40	-	S88° 09' 37.18"E	"W" 50+00.00	"W" 63+50.40



LEGEND

- COLD PLANE PAVEMENT (0.25' DEPTH)
VARIABLE DEPTH CI 2 AB
0.25' HMA
- PAVEMENT WIDENING (NEW STRUCTURAL SECTION)

GENERAL NOTES

1. CONTRACTOR TO VERIFY ALL CONDITIONS AND DIMENSIONS PRIOR TO COMMENCING WORK.
2. PROTECT IN PLACE ALL UTILITIES UNLESS OTHERWISE NOTED.
3. FOR (E) CENTERLINE MONUMENTS, AND SURVEY MARKERS TO BE DEMOLISHED, SEE MONUMENT PRESERVATION SHEET.
4. FOR ALL (E) SIGNS TO BE PROTECTED IN PLACE, REMOVED OR RELOCATED, SEE SIGNAGE AND STRIPING SHEETS.
5. THERE SHALL BE A 1" MAXIMUM LIP AT ALL DRIVEWAY DROPS.



GHD Inc.
718 Third Street
Eureka California 95501 USA
T 1 707 443 8326 F 1 707 444 8330 W www.ghd.com

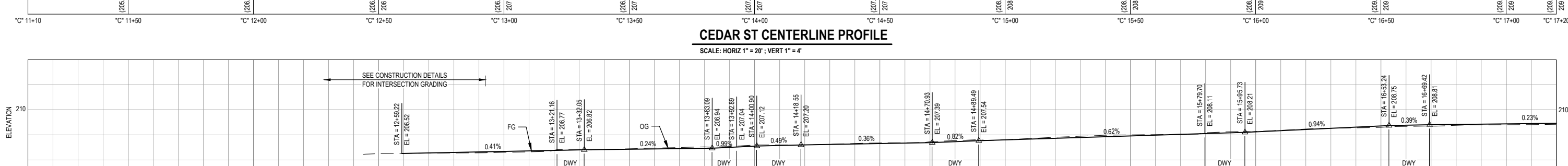
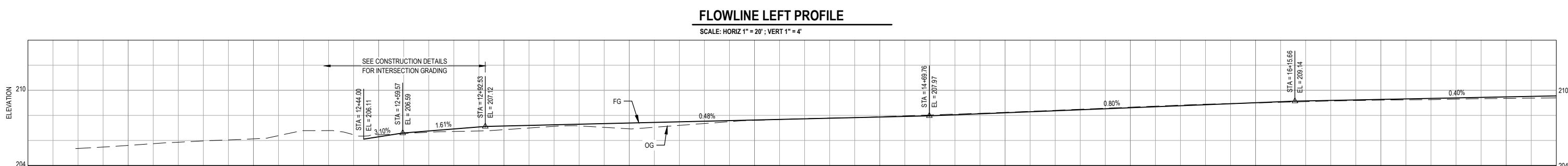
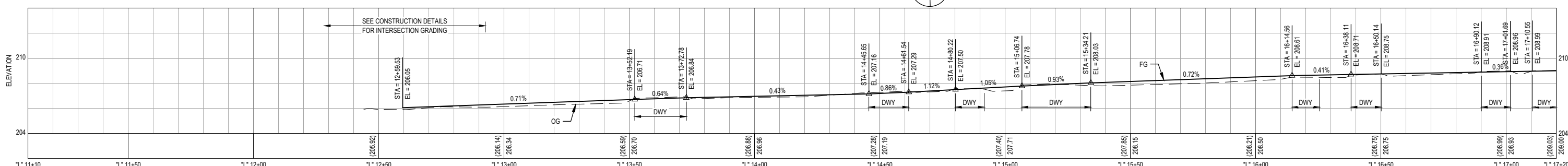
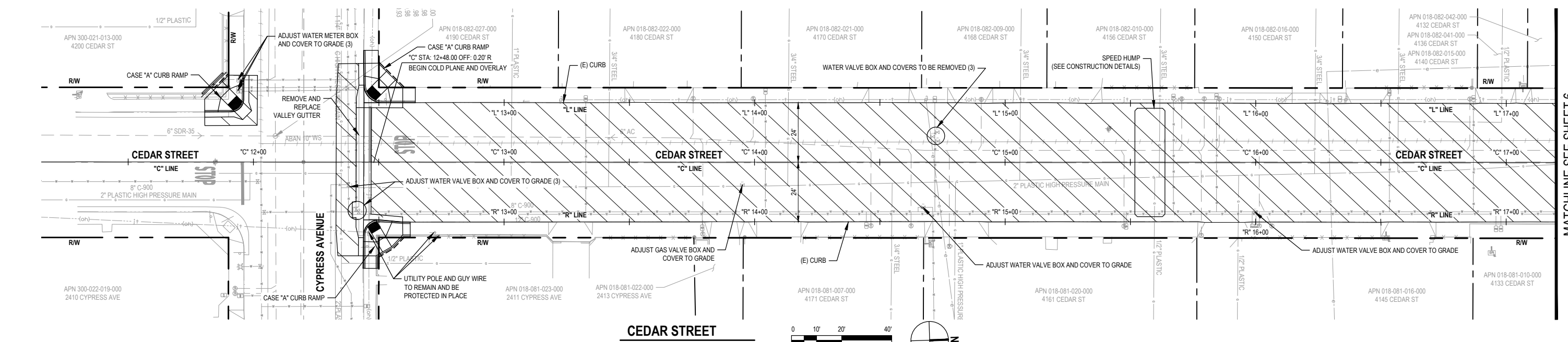


BAR IS ONE INCH ON ORIGINAL DRAWING
IF NOT ONE INCH ON THIS SHEET, ADJUST SCALES ACCORDINGLY

ROAD NAME:	CEDAR STREET AND REDWOOD STREET
ROAD NO.:	3K280 & 3K260 MILE POST: 0.32-0.72 & 0.00-0.23
PROJECT NO.:	N/A
CONTRACT NO.:	342006
DRAWING FILE NAME:	12695149-GHD-00-00-RWY-CI-D101.dwg
PLOT DATE:	6/9/2026
REVISION DATE:	

DESIGN SECTION:	ENGINEERING
DESIGNED BY:	J.VANEGAS
DRAWN BY:	T.BUSH
REVIEWED BY:	J.WOLF
APPROVED BY:	J.WOLF

COUNTY OF HUMBOLDT DEPARTMENT OF PUBLIC WORKS
CEDAR STREET AND REDWOOD STREET REHABILITATION
CEDAR LAYOUT AND PROFILE



LEGEND

- COLD PLANE PAVEMENT (0.25' DEPTH)
VARIABLE DEPTH CI 2 AB
0.25' HMA
- PAVEMENT WIDENING (NEW STRUCTURAL SECTION)

GENERAL NOTES

1. CONTRACTOR TO VERIFY ALL CONDITIONS AND DIMENSIONS PRIOR TO COMMENCING WORK.
2. PROTECT IN PLACE ALL UTILITIES UNLESS OTHERWISE NOTED.
3. FOR (E) CENTERLINE MONUMENTS, AND SURVEY MARKERS TO BE DEMOLISHED, SEE MONUMENT PRESERVATION SHEET.
4. FOR ALL (E) SIGNS TO BE PROTECTED IN PLACE, REMOVED OR RELOCATED, SEE SIGNAGE AND STRIPING SHEETS.
5. THERE SHALL BE A 1" MAXIMUM LIP AT ALL DRIVEWAY DROPS.



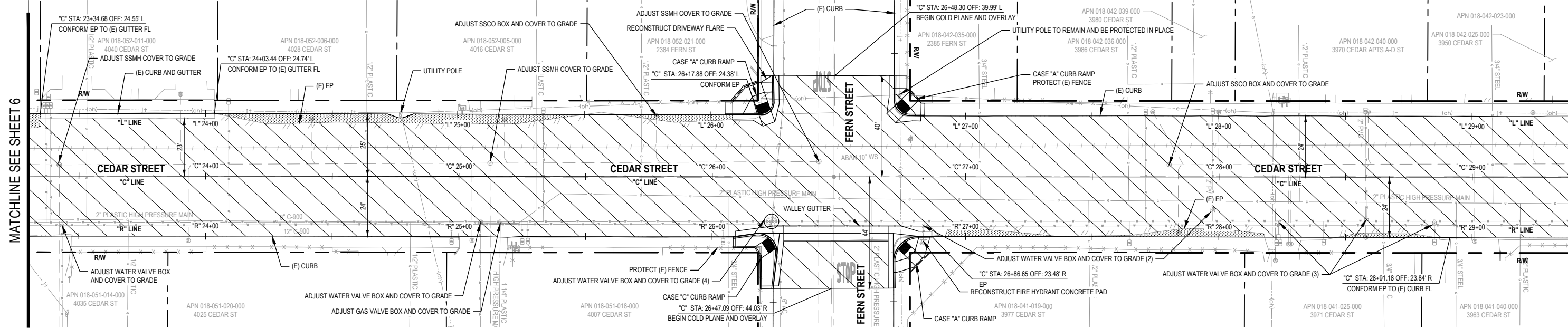
GHD Inc.
718 Third Street
Eureka California 95501 USA
T 1 707 443 8326 F 1 707 444 8330 W www.ghd.com



BAR IS ONE INCH ON ORIGINAL DRAWING
IF NOT ONE INCH ON THIS SHEET, ADJUST SCALES ACCORDINGLY

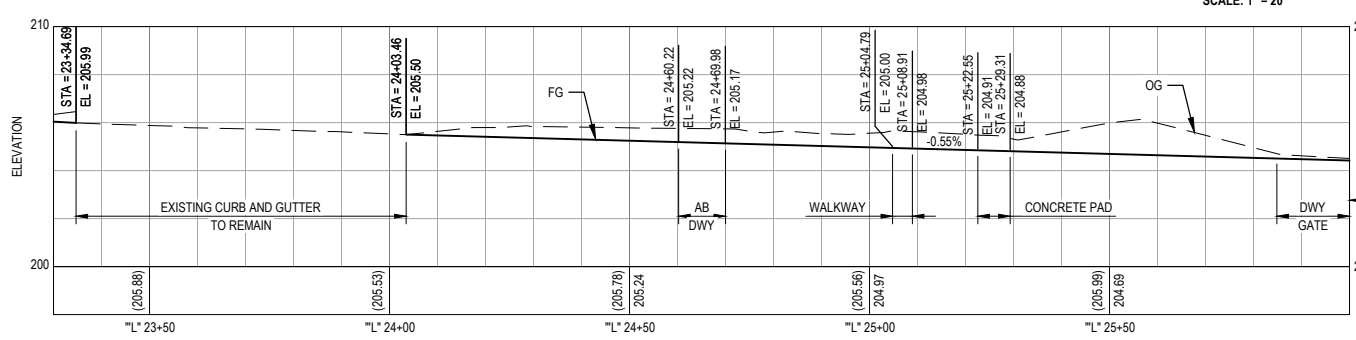
ROAD NAME:	CEDAR STREET AND REDWOOD STREET	DESIGN SECTION:	COUNTY OF HUMBOLDT DEPARTMENT OF PUBLIC WORKS
ROAD NO.:	3K280 & 3K260 MILE POST: 0.32-0.72 & 0.00-0.23	DESIGNED BY:	J.VANEGAS
PROJECT NO.:	N/A	DRAWN BY:	T.BUSH
CONTRACT NO.:	342006	REVIEWED BY:	J.WOLF
DRAWING FILE NAME:	12695149-GHD-00-00-RWY-CI-D101.dwg	APPROVED BY:	J.WOLF
PLOT DATE:	6/9/2026	REVISION DATE:	

SHEET 8 OF 20	
CEDAR LAYOUT AND PROFILE	



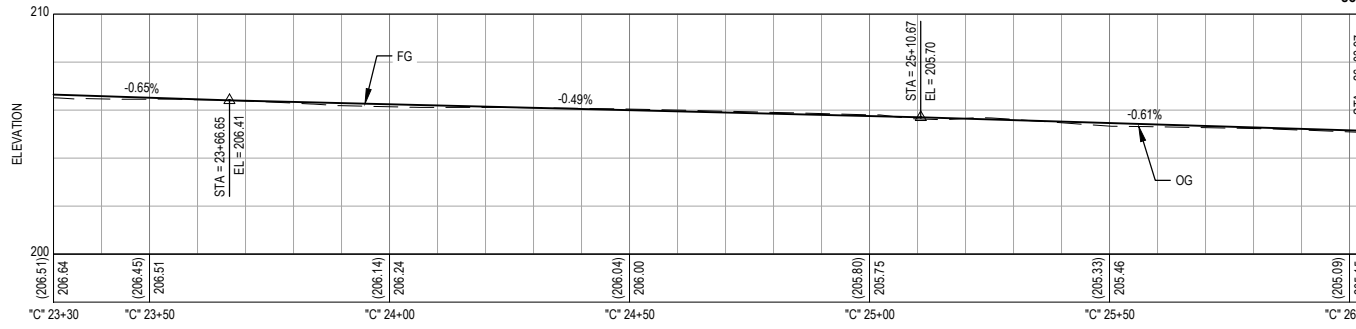
CEDAR STREET

SCALE: 1" = 20'



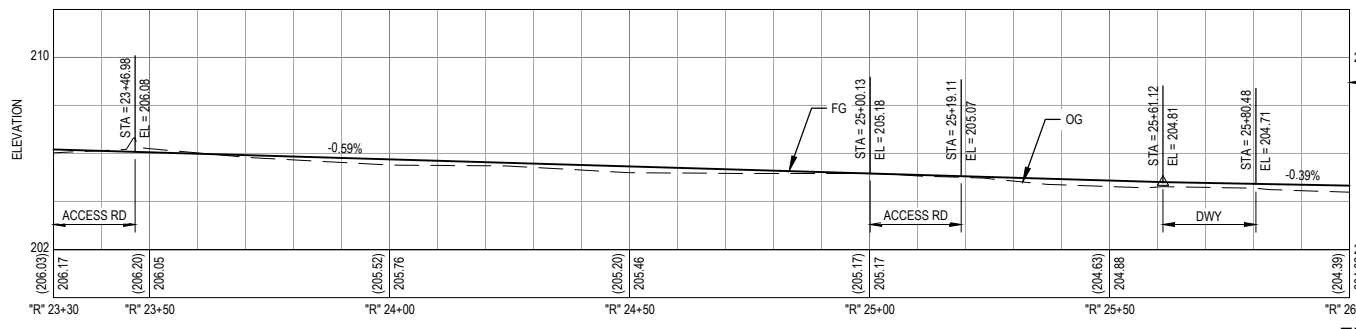
FLOWLINE LEFT PROFILE

SCALE: HORIZ 1" = 20' ; VERT 1" = 4'



CEDAR ST CENTERLINE PROFILE

SCALE: HORIZ 1" = 20' ; VERT 1" = 4'



FLOWLINE RIGHT PROFILE

SCALE: HORIZ 1" = 20' ; VERT 1" = 4'

LEGEND

- COLD PLANE PAVEMENT (0.25' DEPTH)
- VARIABLE DEPTH CI 2 AB 0.25' HMA
- PAVEMENT WIDENING (NEW STRUCTURAL SECTION)

GENERAL NOTES

1. CONTRACTOR TO VERIFY ALL CONDITIONS AND DIMENSIONS PRIOR TO COMMENCING WORK.
2. PROTECT IN PLACE ALL UTILITIES UNLESS OTHERWISE NOTED.
3. FOR (E) CENTERLINE MONUMENTS, AND SURVEY MARKERS TO BE DEMOLISHED, SEE MONUMENT PRESERVATION SHEET.
4. FOR ALL (E) SIGNS TO BE PROTECTED IN PLACE, REMOVED OR RELOCATED, SEE SIGNAGE AND STRIPING SHEETS.
5. THERE SHALL BE A 1" MAXIMUM LIP AT ALL DRIVEWAY DROPS.



GHD Inc.
718 Third Street
Eureka California 95501 USA
T 1 707 443 8326 F 1 707 444 8330 W www.ghd.com

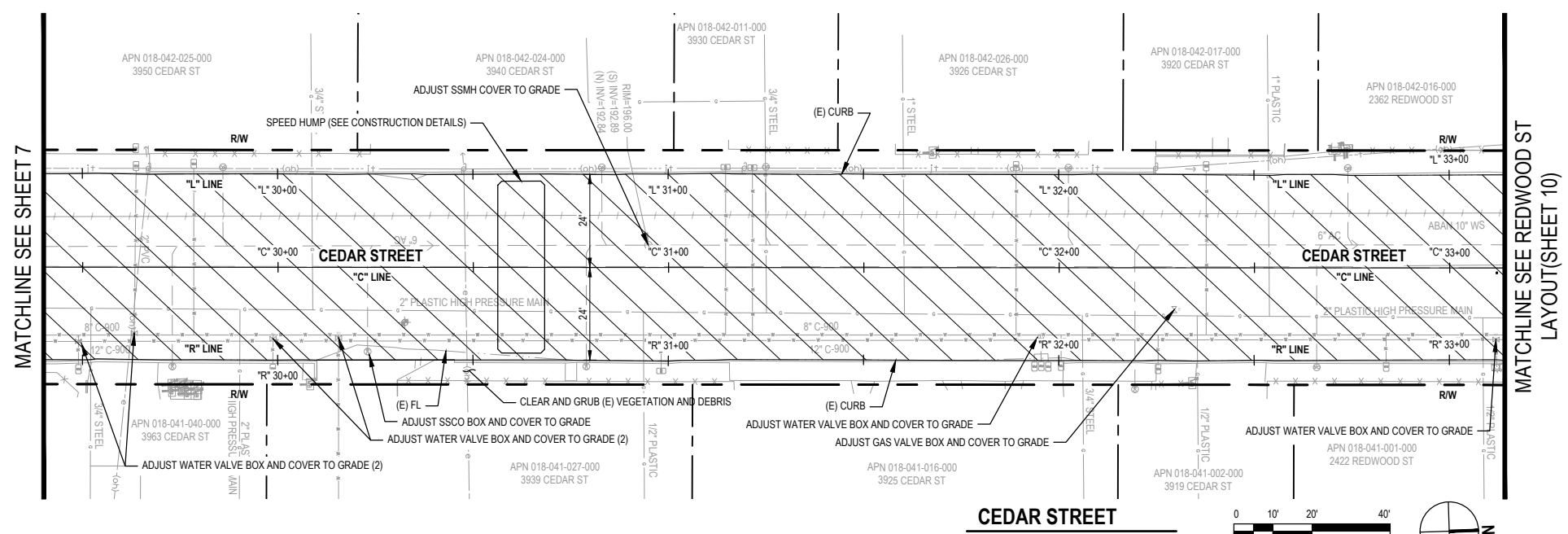


BAR IS ONE INCH ON ORIGINAL DRAWING
IF NOT ONE INCH ON THIS SHEET, ADJUST SCALES ACCORDINGLY

ROAD NAME:	CEDAR STREET AND REDWOOD STREET
ROAD NO.:	3K280 & 3K260 MILE POST: 0.32-0.72 & 0.00-0.23
PROJECT NO.:	N/A
CONTRACT NO.:	342006
DRAWING FILE NAME:	12695149-GHD-00-00-RWY-CI-D101.dwg
PLOT DATE:	6/9/2026
REVISION DATE:	

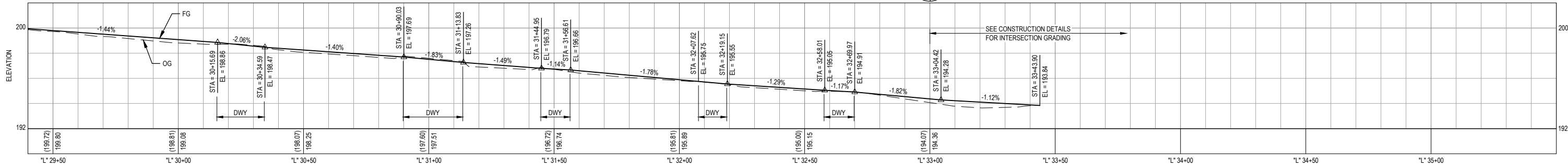
DESIGN SECTION:	ENGINEERING
DESIGNED BY:	J.VANEGAS
DRAWN BY:	T.BUSH
REVIEWED BY:	J.WOLF
APPROVED BY:	J.WOLF

COUNTY OF HUMBOLDT DEPARTMENT OF PUBLIC WORKS
CEDAR STREET AND REDWOOD STREET REHABILITATION
CEDAR LAYOUT AND PROFILE



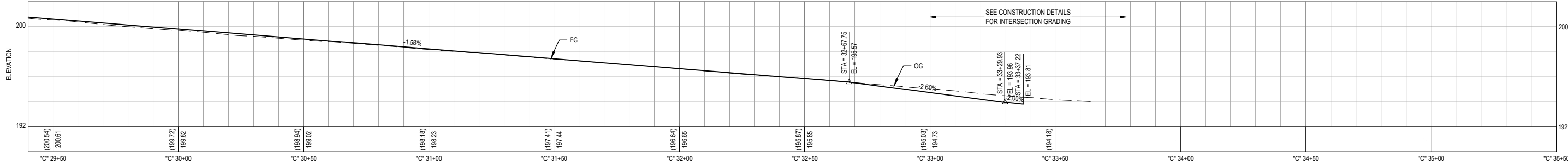
CEDAR STREET

SCALE: 1" = 20'



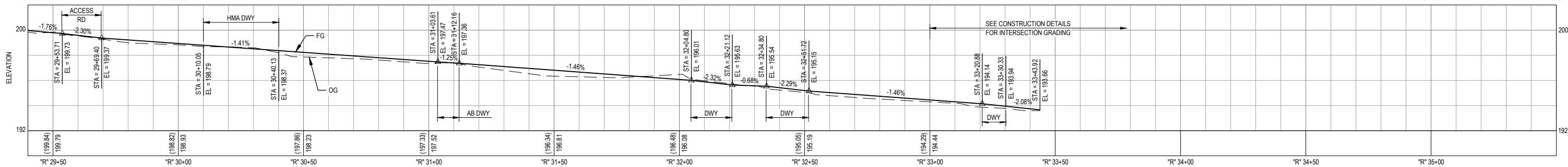
FLOWLINE LEFT PROFILE

SCALE: HORIZ 1" = 20' ; VERT 1" = 4'



CEDAR ST CENTERLINE PROFILE


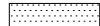
SCALE: HORIZ 1" = 20' ; VERT 1" = 4'



FLOWLINE RIGHT PROFILE

SCALE: HORIZ 1" = 20' ; VERT 1" = 4'

LEGEND

-  COLD PLANE PAVEMENT (0.25' DEPTH)
VARIABLE DEPTH CI 2 AB
0.25' HMA
-  PAVEMENT WIDENING (NEW STRUCTURAL SECTION)

GENERAL NOTES

1. CONTRACTOR TO VERIFY ALL CONDITIONS AND DIMENSIONS PRIOR TO COMMENCING WORK.
2. PROTECT IN PLACE ALL UTILITIES UNLESS OTHERWISE NOTED.
3. FOR (E) CENTERLINE MONUMENTS, AND SURVEY MARKERS TO BE DEMOLISHED, SEE MONUMENT PRESERVATION SHEET.
4. FOR ALL (E) SIGNS TO BE PROTECTED IN PLACE, REMOVED OR RELOCATED, SEE SIGNAGE AND STRIPING SHEETS.
5. THERE SHALL BE A 1" MAXIMUM LIP AT ALL DRIVEWAY DROPS.



GHD Inc.
718 Third Street
Eureka California 95501 USA
T 1 707 443 8326 F 1 707 444 8330 W www.ghd.com

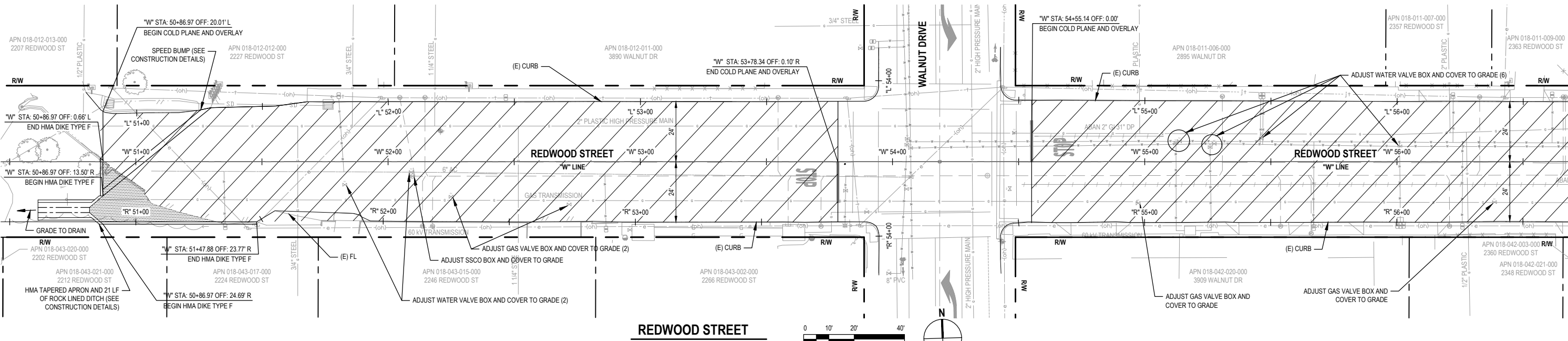


BAR IS ONE INCH ON ORIGINAL DRAWING
IF NOT ONE INCH ON THIS SHEET, ADJUST SCALES ACCORDINGLY

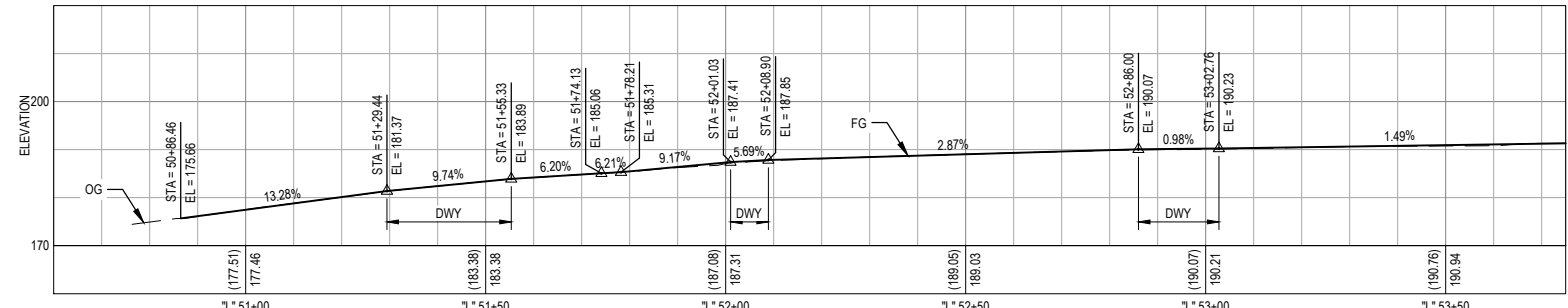
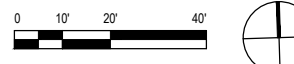
ROAD NAME:	CEDAR STREET AND REDWOOD STREET	DESIGN SECTION:	COUNTY OF HUMBOLDT DEPARTMENT OF PUBLIC WORKS
ROAD NO.:	3K280 & 3K260 MILE POST: 0.32-0.72 & 0.00-0.23	DESIGNED BY:	J.VANEGAS
PROJECT NO.:	N/A	DRAWN BY:	T.BUSH
CONTRACT NO.:	342006	REVIEWED BY:	J.WOLF
DRAWING FILE NAME:	12695149-GHD-00-00-RW-CI-D102.dwg	APPROVED BY:	J.WOLF
PLOT DATE:	6/9/2026	REVISION DATE:	

REDWOOD LAYOUT AND PROFILE	
-----------------------------------	--

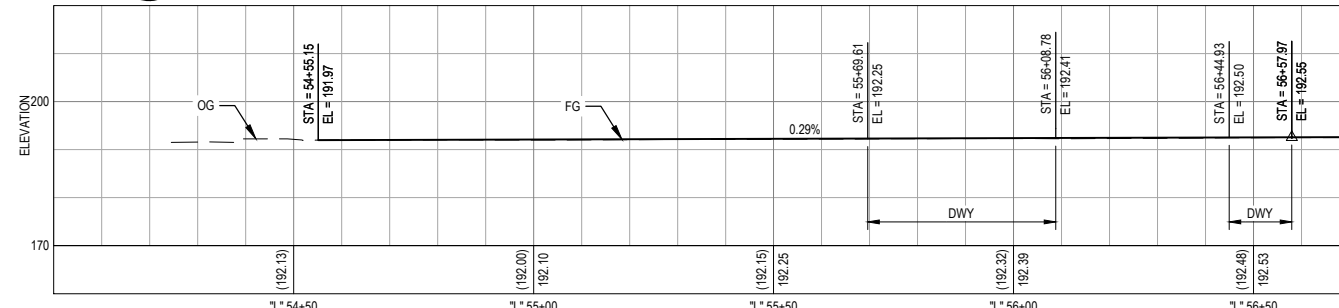
SHEET
10
OF
20



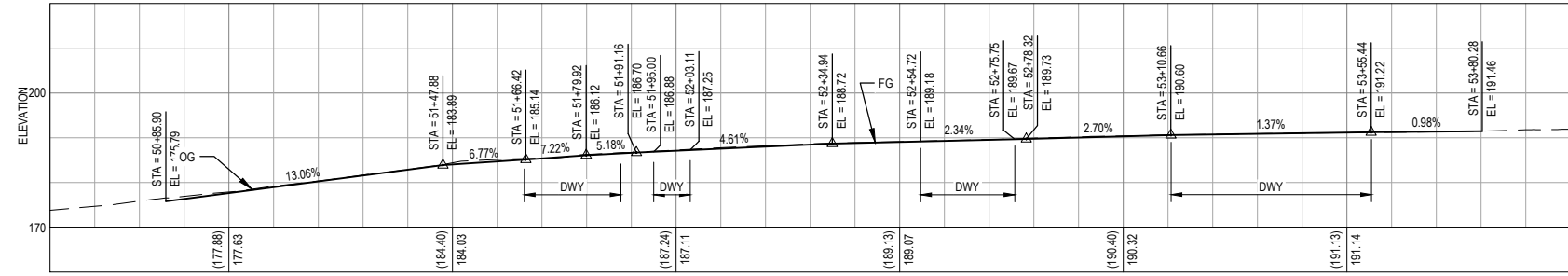
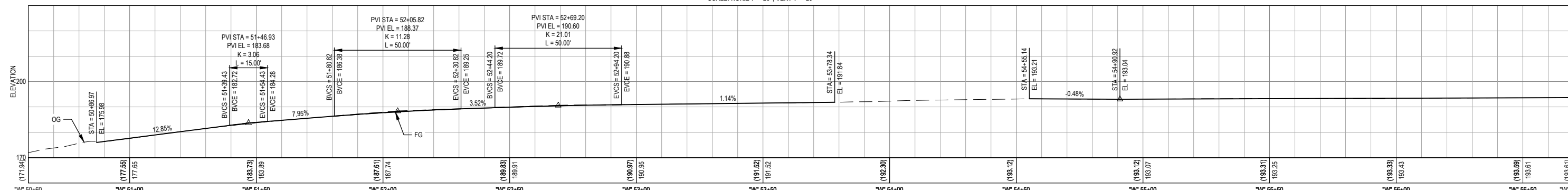
REDWOOD STREET
SCALE: 1" = 20'



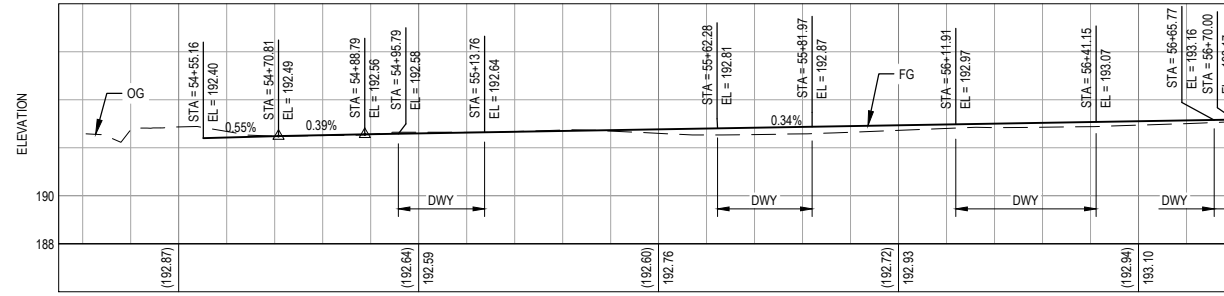
FLOWLINE LEFT PROFILE
SCALE: HORIZ 1" = 20'; VERT 1" = 20'



REDWOOD ST CENTERLINE PROFILE
SCALE: HORIZ 1" = 20'; VERT 1" = 20'



FLOWLINE RIGHT PROFILE
SCALE: HORIZ 1" = 20'; VERT 1" = 20'



FLOWLINE RIGHT PROFILE
SCALE: HORIZ 1" = 20'; VERT 1" = 4'

UTILITY POTHOLING AND DESIGN CONFIRMATION NOTES:

1. AS A FIRST ITEM OF WORK, THE CONTRACTOR SHALL POTHOLE EXISTING UTILITIES THAT CROSS OR CONFLICT WITH THE PROPOSED STORM DRAIN TO DETERMINE THEIR HORIZONTAL AND VERTICAL LOCATION. POTHOLING SHALL BE PERFORMED AS NEEDED TO VERIFY UTILITY CLEARANCES AND CONTRACTIBILITY.
2. POTHOLING RESULTS SHALL BE DOCUMENTED AND SUBMITTED TO THE COUNTY FOR REVIEW.
3. THE COUNTY SHALL BE ALLOWED UP TO TWO (2) WEEKS TO REVIEW THE INFORMATION AND DETERMINE WHETHER STORM DRAIN DESIGN REVISIONS ARE REQUIRED.
4. THE CONTRACTOR SHALL NOT ORDER OR DELIVER ANY STORM DRAIN OR DRAINAGE MATERIALS UNTIL THE COUNTY CONFIRMS IN WRITING THAT THE ORIGINAL OR REVISED DESIGN IS ACCEPTABLE.
5. NO ADDITIONAL COMPENSATION OR TIME ADJUSTMENT SHALL BE PROVIDED FOR DELAYS RESULTING FROM FAILURE TO PERFORM POTHOLING AS SPECIFIED OR FROM ORDERING MATERIALS PRIOR TO COUNTY CONFIRMATION.



GHD Inc.
718 Third Street
Eureka California 95501 USA
T 1 707 443 8326 F 1 707 444 8330 W www.ghd.com



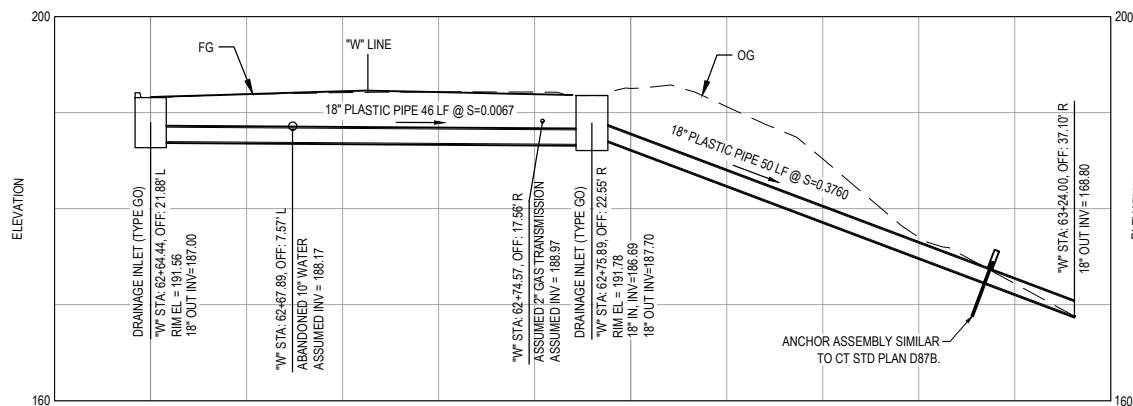
BAR IS ONE INCH ON ORIGINAL DRAWING
IF NOT ONE INCH ON THIS SHEET, ADJUST SCALES ACCORDINGLY

ROAD NAME:	CEDAR STREET AND REDWOOD STREET
ROAD NO.:	3K280 & 3K260 MILE POST: 0.32-0.72 & 0.00-0.23
PROJECT NO.:	N/A
CONTRACT NO.:	342006
DRAWING FILE NAME:	12695149-GHD-00-00-DRN-CI-D101.dwg
PLOT DATE:	6/9/2026
REVISION DATE:	

DESIGN SECTION	ENGINEERING
DESIGNED BY:	J.VANEGAS
DRAWN BY:	J.VANEGAS
REVIEWED BY:	J.WOLF
APPROVED BY:	J.WOLF

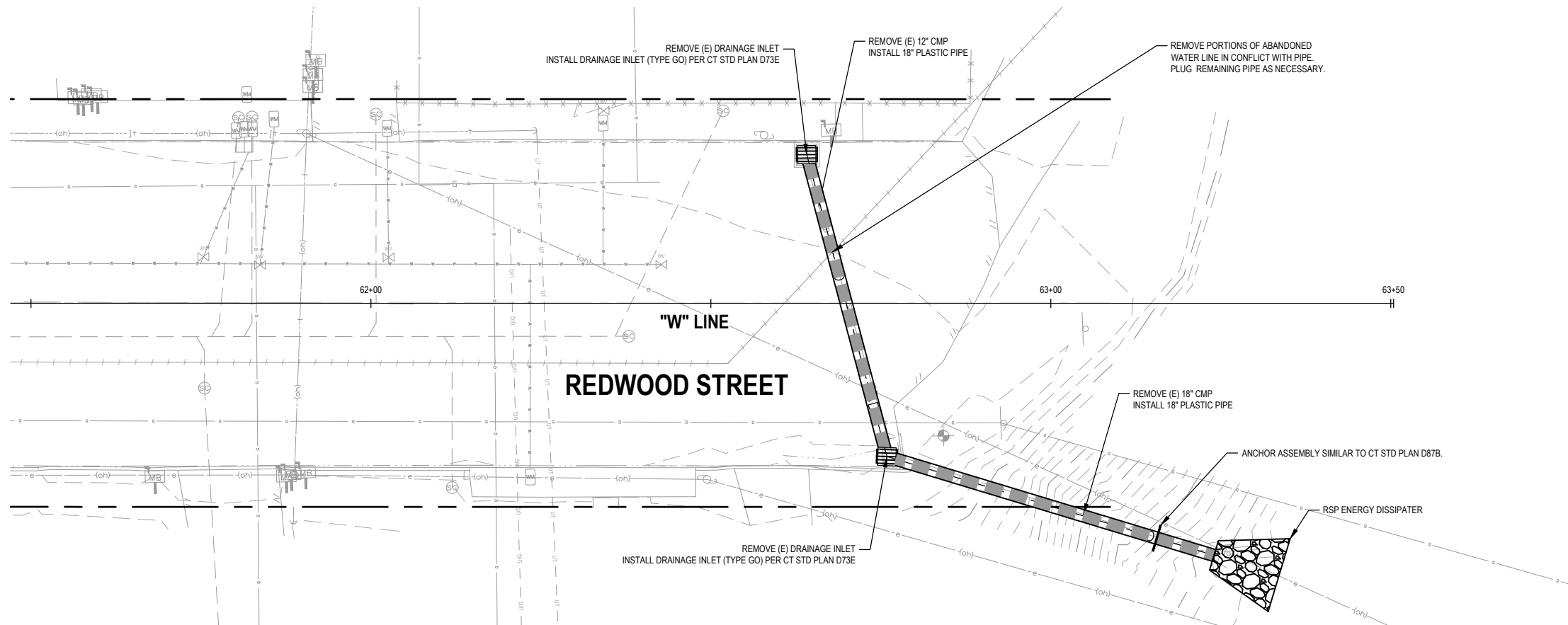
COUNTY OF HUMBOLDT DEPARTMENT OF PUBLIC WORKS
CEDAR STREET AND REDWOOD STREET REHABILITATION
DRAINAGE PLAN

SHEET
12
OF
20



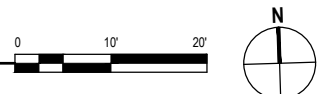
DRAINAGE PROFILE

SCALE: V: 1" = 10'; H: 1" = 10'



DRAINAGE LAYOUT

SCALE: 1" = 10'



LEGEND



DETECTABLE WARNING SURFACE. REFERENCE CALTRANS STANDARD PLAN A88A.

GENERAL NOTES

1. DETECTABLE WARNING SURFACE SHALL BE INSTALLED IN ACCORDANCE WITH CBC SECTION 11B-705. DETECTABLE WARNINGS AND DETECTABLE DIRECTIONAL TEXTURE. DETECTABLE WARNINGS SHALL BE LOCATED SO THE EDGE NEAREST THE CURB IS 6 INCHES MINIMUM AND 8 INCHES MAXIMUM FROM THE DEMARCATION LINE AT THE FACE OF THE CURB BETWEEN THE CURB AND THE GUTTER, STREET, OR HIGHWAY.
2. MAXIMUM SLOPES OF ADJOINING GUTTERS, THE ROAD SURFACE IMMEDIATELY ADJACENT TO THE CURB RAMP OR ACCESSIBLE ROUTE SHALL NOT EXCEED 2% IN ANY DIRECTION WITHIN 4'-0" OF THE CURB RAMP.



GHD Inc. 718 Third Street Eureka California 95501 USA T 707 443 8326 F 1 707 444 8330 W www.ghd.com



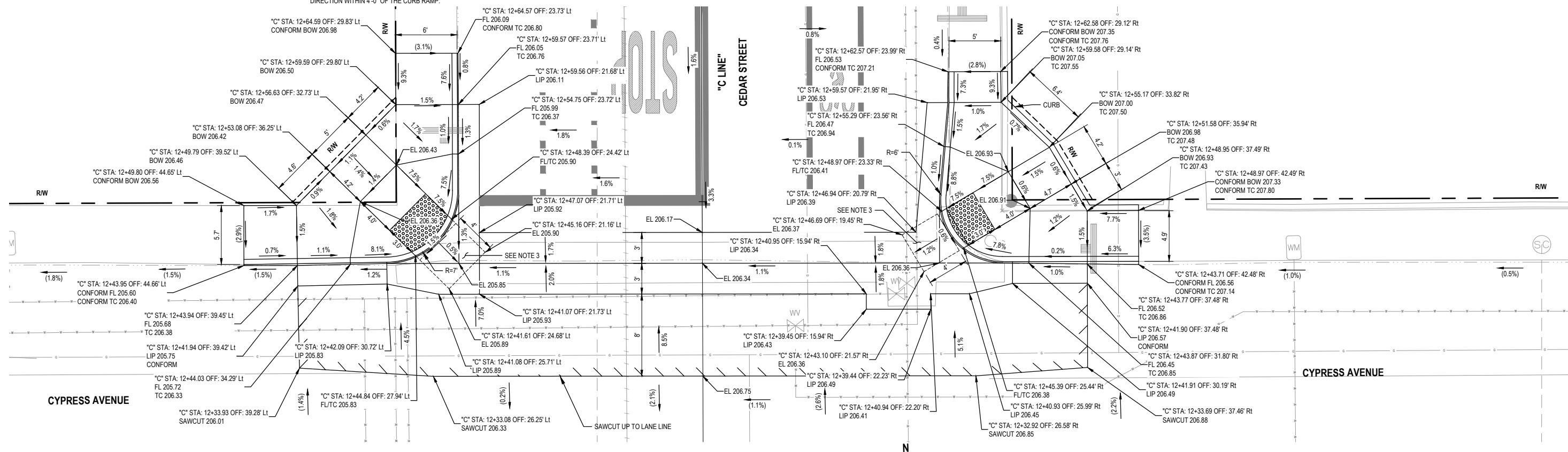
BAR IS ONE INCH ON ORIGINAL DRAWING IF NOT ONE INCH ON THIS SHEET, ADJUST SCALES ACCORDINGLY

ROAD NAME:	CEDAR STREET AND REDWOOD STREET
ROAD NO.:	3K280 & 3K260 MILE POST: 0.32-0.72 & 0.00-0.23
PROJECT NO.:	N/A
CONTRACT NO.:	342006
DRAWING FILE NAME:	12695149-GHD-00-00-RWY-CI-D401.dwg
PLOT DATE:	6/9/2026
REVISION DATE:	

DESIGN SECTION	ENGINEERING
DESIGNED BY:	J.VANEGAS
DRAWN BY:	T. CINCEBEAUX
REVIEWED BY:	J.WOLF
APPROVED BY:	J.WOLF

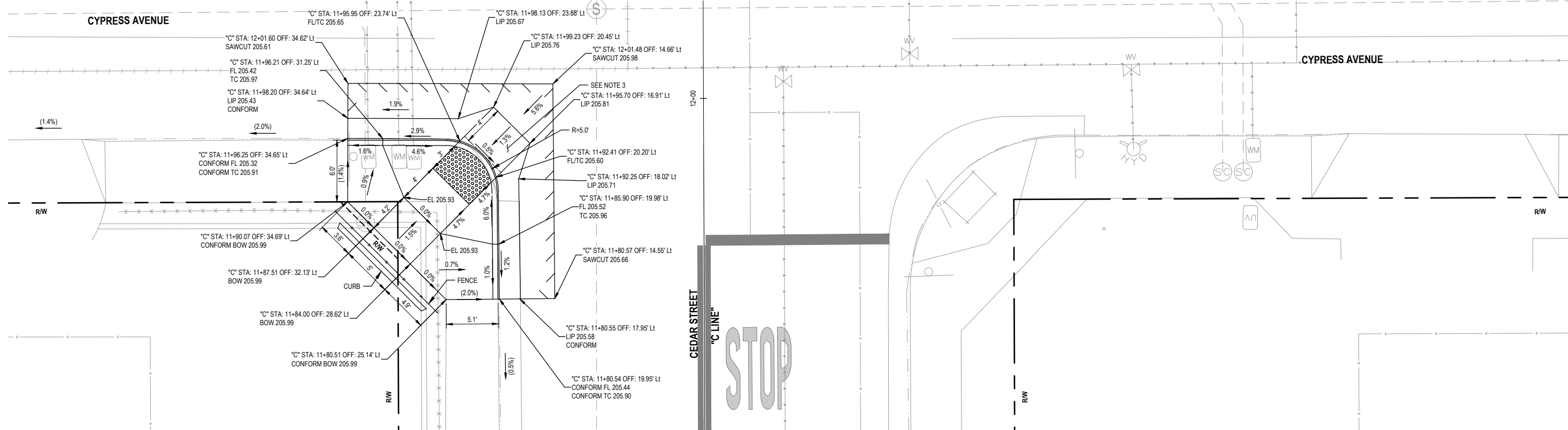
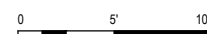
COUNTY OF HUMBOLDT DEPARTMENT OF PUBLIC WORKS
CEDAR STREET AND REDWOOD STREET REHABILITATION
CURB RAMP ENLARGED DETAILS

SHEET 13 OF 20



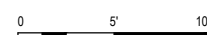
NE/NW CEDAR AND CYPRESS CURB RAMPS

SCALE: 1" = 5'



SE/SW CEDAR AND CYPRESS CURB RAMPS

SCALE: 1" = 5'



LEGEND



DETECTABLE WARNING SURFACE. REFERENCE CALTRANS STANDARD PLAN A88A.

GENERAL NOTES

1. DETECTABLE WARNING SURFACE SHALL BE INSTALLED IN ACCORDANCE WITH CBC SECTION 118-705. DETECTABLE WARNINGS AND DETECTABLE DIRECTIONAL TEXTURE. DETECTABLE WARNINGS SHALL BE LOCATED SO THE EDGE NEAREST THE CURB IS 6 INCHES MINIMUM AND 8 INCHES MAXIMUM FROM THE DEMARCATION LINE AT THE FACE OF THE CURB BETWEEN THE CURB AND THE GUTTER, STREET, OR HIGHWAY.
2. MAXIMUM SLOPES OF ADJOINING GUTTERS, THE ROAD SURFACE IMMEDIATELY ADJACENT TO THE CURB RAMP OR ACCESSIBLE ROUTE SHALL NOT EXCEED 2% IN ANY DIRECTION WITHIN 4'-0" OF THE CURB RAMP.



GHD Inc. 718 Third Street Eureka California 95501 USA T 1 707 443 8326 F 1 707 444 8330 W www.ghd.com



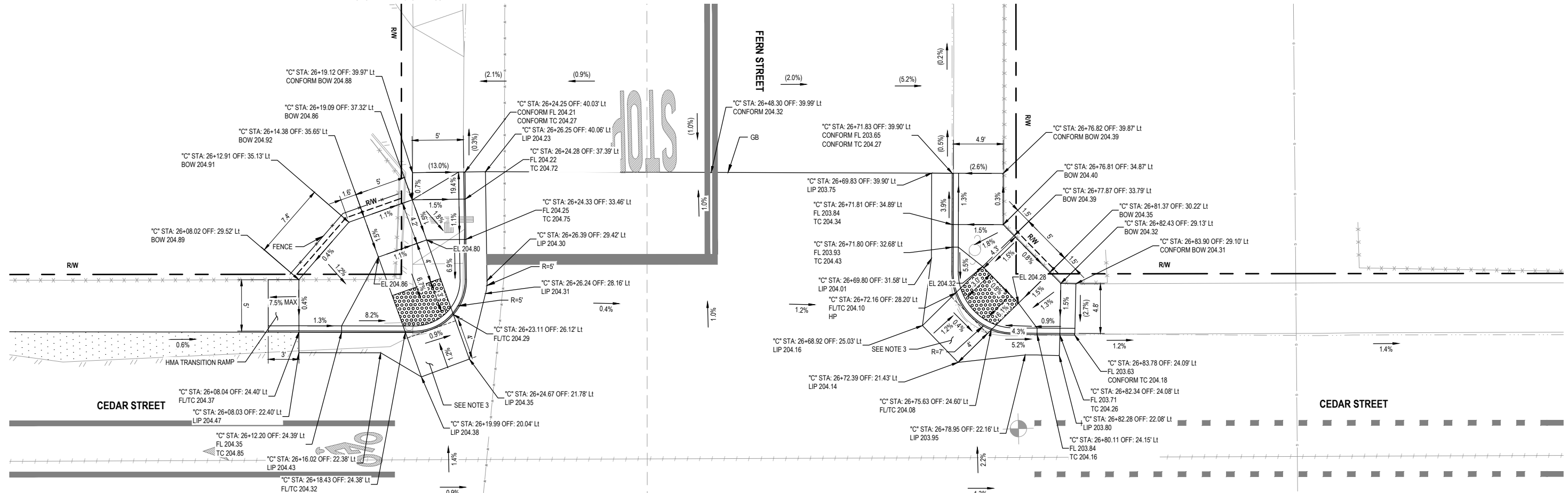
BAR IS ONE INCH ON ORIGINAL DRAWING IF NOT ONE INCH ON THIS SHEET, ADJUST SCALES ACCORDINGLY

ROAD NAME:	CEDAR STREET AND REDWOOD STREET
ROAD NO.:	3K280 & 3K260 MILE POST: 0.32-0.72 & 0.00-0.23
PROJECT NO.:	N/A
CONTRACT NO.:	342006
DRAWING FILE NAME:	12695149-GHD-00-00-RWY-CI-D401.dwg
PLOT DATE:	6/9/2026
REVISION DATE:	

DESIGN SECTION:	ENGINEERING
DESIGNED BY:	J.VANEGAS
DRAWN BY:	T.BUSH
REVIEWED BY:	J.WOLF
APPROVED BY:	J.WOLF

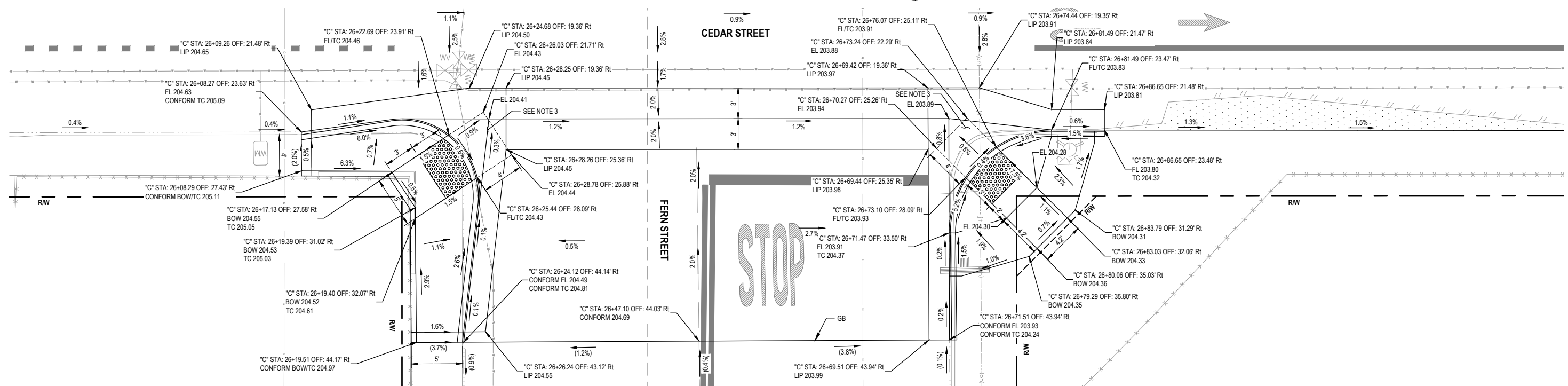
COUNTY OF HUMBOLDT DEPARTMENT OF PUBLIC WORKS
CEDAR STREET AND REDWOOD STREET REHABILITATION
CURB RAMP ENLARGED DETAILS

SHEET 14 OF 20



NW/SW CEDAR AND FERN CURB RAMP

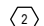
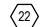

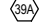



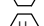







SCALE: 1" = 5'



NE/SE CEDAR AND FERN CURB RAMP

SCALE: 1" = 5'

LEGEND

-  TRAFFIC STRIPE DETAIL NO. 2 - 6" YELLOW CENTERLINE STRIPE (A20A)
-  TRAFFIC STRIPE DETAIL NO. 22 - 6" YELLOW NO PASSING STRIPE (A20A)
-  TRAFFIC STRIPE DETAIL NO. 39 - 6" WHITE BIKE LANE STRIPE (A20D)
-  TRAFFIC STRIPE DETAIL NO. 39A - 6" WHITE INTERSECTION BIKE LANE STRIPE (A20D)
-  CONTINENTAL CROSSWALK, WHITE (A24F)
-  HYDRANT REFLECTOR: TWO-WAY, BLUE RETROREFLECTIVE PAVEMENT MARKER
-  SPEED HUMP ADVANCE WARNING PAVEMENT MARKING PER DETAIL ON SHEET 19
-  PAINT CURB RED
-  LIMIT LINE (A24G)
-  ROADSIDE SIGN - ONE POST
-  BEGIN OR END OF STRIPE DETAIL
-  TRANSITION FROM ONE TRAFFIC STRIPE TYPE TO ANOTHER
-  BIKE LANE SYMBOL WITH PERSON (A24C) AND BIKE LANE ARROW (A24A) PAVEMENT MARKING
-  SPEED HUMP PAVEMENT MARKING PER OPTION A IN FIGURE 3B-26 IN 2026 CA MUTCD
-  "STOP" MARKING (A24D)

GENERAL NOTES

1. THIS PLAN ACCURATE FOR SIGNAGE AND STRIPING ONLY.
2. CONTRACTOR TO VERIFY ALL CONDITIONS AND DIMENSIONS PRIOR TO COMMENCING WORK.
3. TRAFFIC STRIPES SHALL BE PAINT AND PAVEMENT MARKINGS SHALL BE THERMOPLASTIC PER CALTRANS STANDARD PLANS AND SPECIFICATIONS, LATEST EDITION.
4. PAVEMENT STRIPING DETAIL NO. AND MARKINGS PER CALTRANS STANDARD PLANS, LATEST EDITION.
5. ROADSIDE SIGN INSTALLATION WILL USE BREAKAWAY POST AND ANCHOR-MATE.



GHD Inc.
718 Third Street
Eureka California 95501 USA
T 1 707 443 8326 F 1 707 444 8330 W www.ghd.com



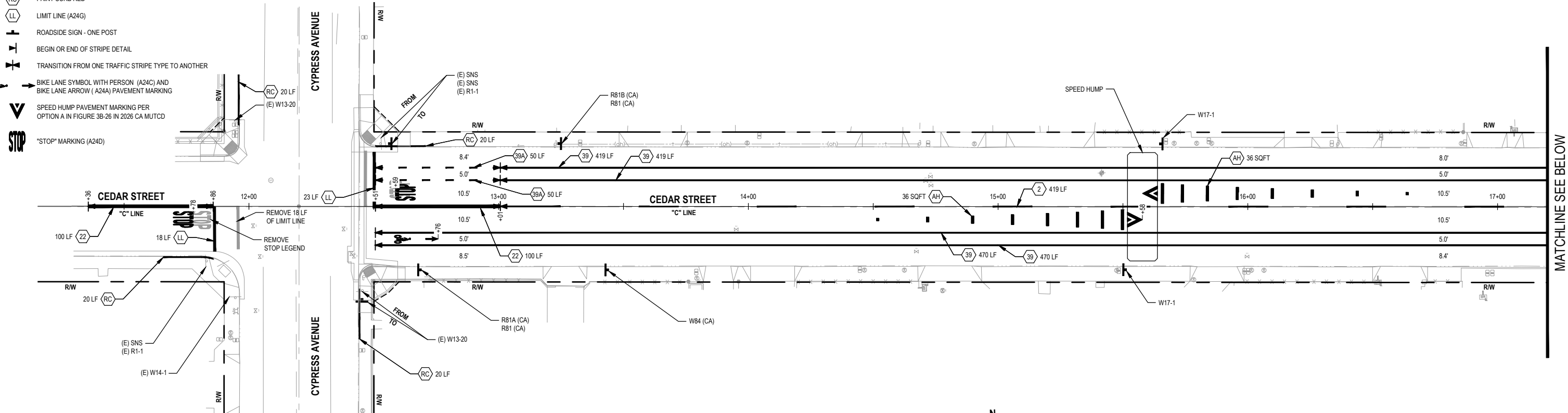
BAR IS ONE INCH ON ORIGINAL DRAWING
IF NOT ONE INCH ON THIS SHEET, ADJUST SCALES ACCORDINGLY

ROAD NAME:	CEDAR STREET AND REDWOOD STREET
ROAD NO.:	3K280 & 3K260 MILE POST: 0.32-0.72 & 0.00-0.23
PROJECT NO.:	N/A
CONTRACT NO.:	342006
DRAWING FILE NAME:	12695149-GHD-00-00-SGN-CI-D101.dwg
PLOT DATE:	6/9/2026
REVISION DATE:	

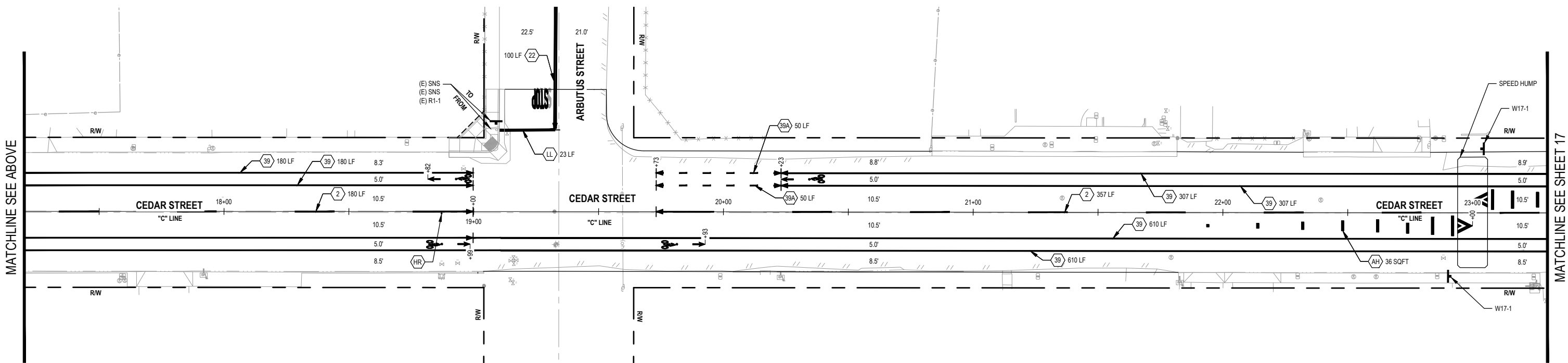
DESIGN SECTION	ENGINEERING
DESIGNED BY:	J.VANEGAS
DRAWN BY:	J.VANEGAS
REVIEWED BY:	J.WOLF
APPROVED BY:	J.WOLF

COUNTY OF HUMBOLDT DEPARTMENT OF PUBLIC WORKS
CEDAR STREET AND REDWOOD STREET REHABILITATION
SIGNAGE AND STRIPING PLAN

SHEET
16
OF
20



CEDAR STREET
SCALE: 1" = 20'



CEDAR STREET
SCALE: 1" = 20'



MATCHLINE SEE ABOVE

MATCHLINE SEE SHEET 17

LEGEND

-  TRAFFIC STRIPE DETAIL NO. 2 - 6" YELLOW CENTERLINE STRIPE (A20A)
-  TRAFFIC STRIPE DETAIL NO. 22 - 6" YELLOW NO PASSING STRIPE (A20A)
-  TRAFFIC STRIPE DETAIL NO. 39 - 6" WHITE BIKE LANE STRIPE (A20D)
-  TRAFFIC STRIPE DETAIL NO. 39A - 6" WHITE INTERSECTION BIKE LANE STRIPE (A20D)
-  CONTINENTAL CROSSWALK, WHITE (A24F)
-  HYDRANT REFLECTOR: TWO-WAY, BLUE RETROREFLECTIVE PAVEMENT MARKER
-  SPEED HUMP ADVANCE WARNING PAVEMENT MARKING PER DETAIL ON SHEET 19
-  PAINT CURB RED
-  LIMIT LINE (A24G)
-  ROADSIDE SIGN - ONE POST
-  BEGIN OR END OF STRIPE DETAIL
-  TRANSITION FROM ONE TRAFFIC STRIPE TYPE TO ANOTHER
-  BIKE LANE SYMBOL WITH PERSON (A24C) AND BIKE LANE ARROW (A24A) PAVEMENT MARKING
-  SPEED HUMP PAVEMENT MARKING PER OPTION A IN FIGURE 3B-26 IN 2026 CA MUTCD
-  *STOP* MARKING (A24D)

GENERAL NOTES

1. THIS PLAN ACCURATE FOR SIGNAGE AND STRIPING ONLY.
2. CONTRACTOR TO VERIFY ALL CONDITIONS AND DIMENSIONS PRIOR TO COMMENCING WORK.
3. TRAFFIC STRIPES SHALL BE PAINT AND PAVEMENT MARKINGS SHALL BE THERMOPLASTIC PER CALTRANS STANDARD PLANS AND SPECIFICATIONS, LATEST EDITION.
4. PAVEMENT STRIPING DETAIL NO. AND MARKINGS PER CALTRANS STANDARD PLANS, LATEST EDITION.
5. ROADSIDE SIGN INSTALLATION WILL USE BREAKAWAY POST AND ANCHOR-MATE.



GHD Inc.
718 Third Street
Eureka California 95501 USA
T 1 707 443 8326 F 1 707 444 8330 W www.ghd.com



BAR IS ONE INCH ON ORIGINAL DRAWING

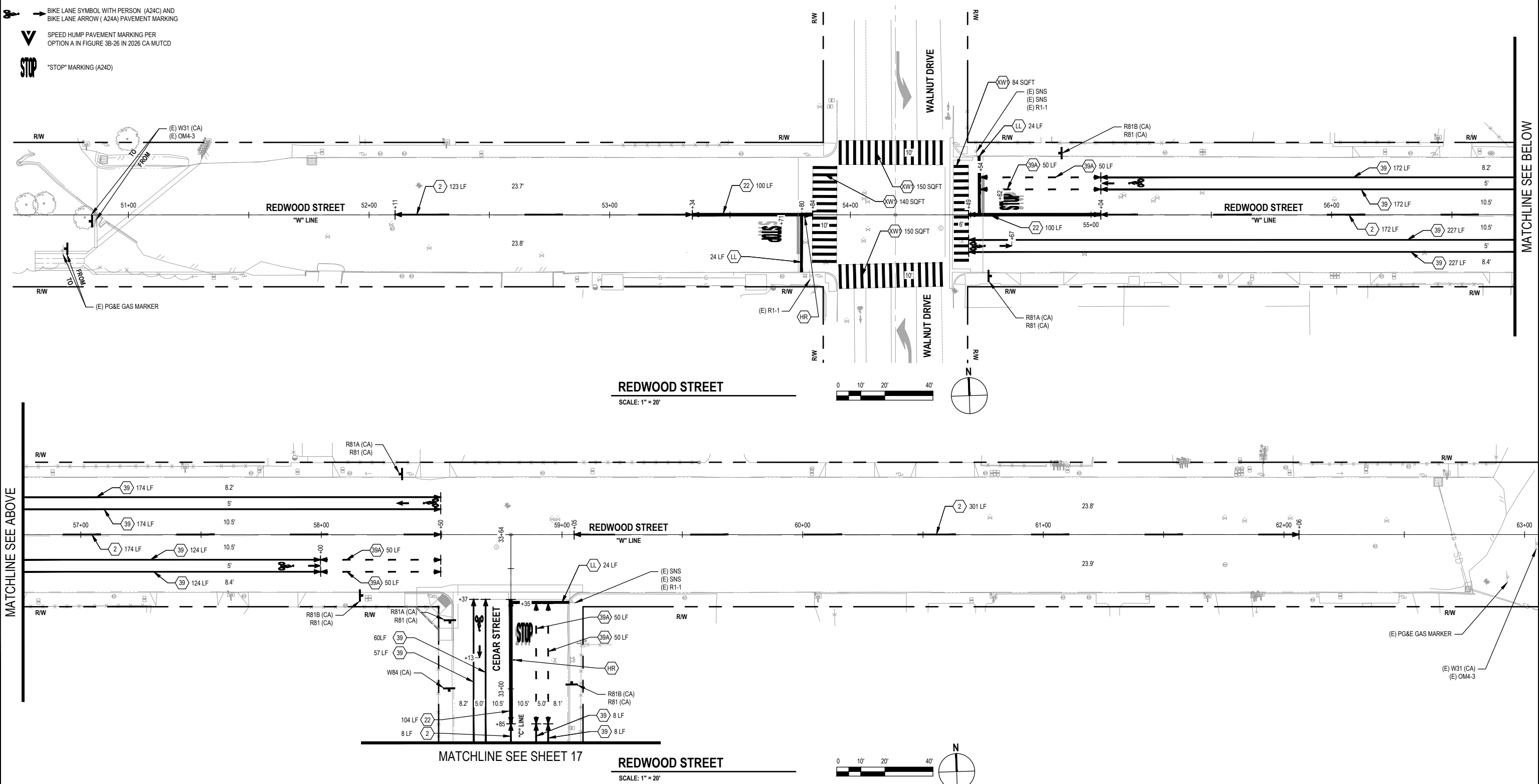
IF NOT ONE INCH ON THIS SHEET, ADJUST SCALES ACCORDINGLY

ROAD NAME:	CEDAR STREET AND REDWOOD STREET
ROAD NO.:	3K280 & 3K260 MILE POST: 0.32-0.72 & 0.00-0.23
PROJECT NO.:	N/A
CONTRACT NO.:	342006
DRAWING FILE NAME:	12695149-GHD-00-00-SGN-CI-D101.dwg
PLOT DATE:	6/9/2026
REVISION DATE:	

DESIGN SECTION	ENGINEERING
DESIGNED BY:	J.VANEGAS
DRAWN BY:	J.VANEGAS
REVIEWED BY:	J.WOLF
APPROVED BY:	J.WOLF

COUNTY OF HUMBOLDT DEPARTMENT OF PUBLIC WORKS
CEDAR STREET AND REDWOOD STREET REHABILITATION
SIGNAGE AND STRIPING PLAN

SHEET
18
OF
20





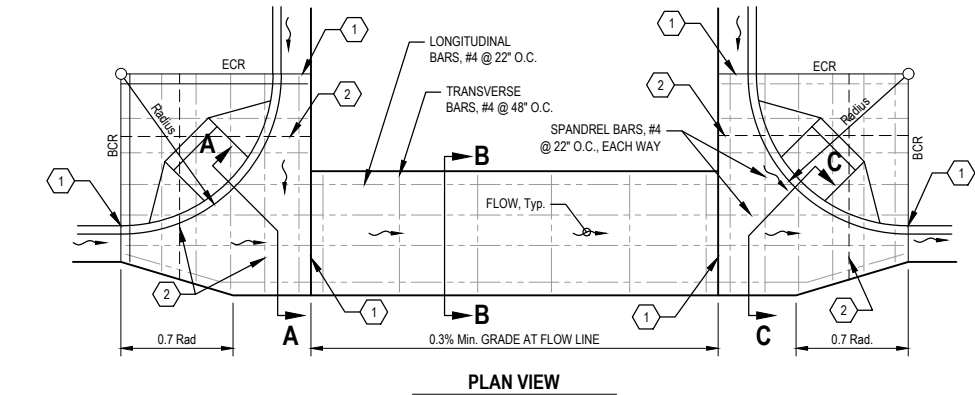
GHD Inc.
718 Third Street
Eureka California 95501 USA
T 1 707 443 8326 F 1 707 444 8330 W www.ghd.com



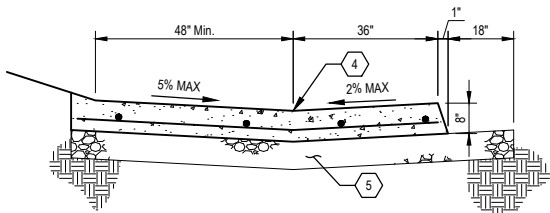
BAR IS ONE INCH ON ORIGINAL DRAWING
IF NOT ONE INCH ON THIS SHEET, ADJUST SCALES ACCORDINGLY

ROAD NAME:	CEDAR STREET AND REDWOOD STREET	DESIGN SECTION:	COUNTY OF HUMBOLDT DEPARTMENT OF PUBLIC WORKS
ROAD NO.:	3K280 & 3K260 MILE POST: 0.32-0.72 & 0.00-0.23	DESIGNED BY:	J.VANEGAS
PROJECT NO.:	N/A	DRAWN BY:	T.CINCEBEAUX
CONTRACT NO.:	342006	REVIEWED BY:	J.WOLF
DRAWING FILE NAME:	12695149-GHD-00-00-RWY-CI-D501.dwg	APPROVED BY:	J.WOLF
PLOT DATE:	6/9/2026	REVISION DATE:	

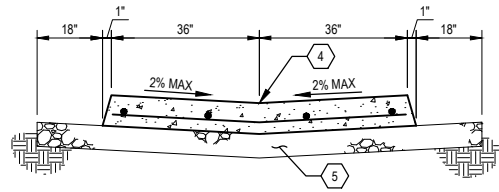
SHEET	19
OF	20
CONSTRUCTION DETAILS	



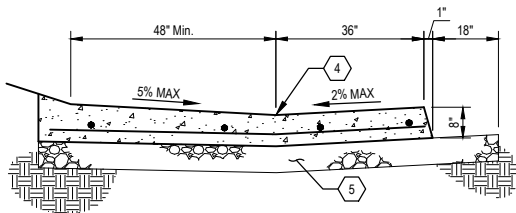
PLAN VIEW



SECTION A-A
(UPHILL SIDE)



SECTION B-B



SECTION C-C
(DOWNHILL SIDE)

VALLEY GUTTER

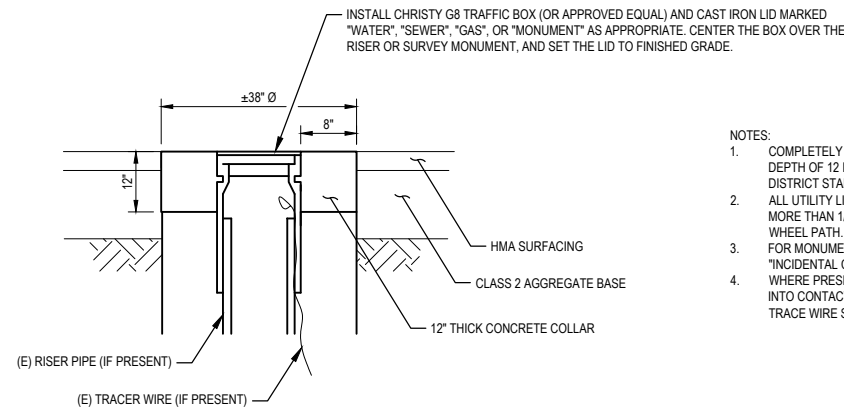
NOT TO SCALE

INSTALLATION KEY NOTES:

- 1 STANDARD EXPANSION JOINT
- 2 IF CURB RETURN RADIUS IS 20' OR LARGER, SPANDRELS SHALL HAVE EXTRA EXPANSION JOINTS AT LOCATIONS TO BE DETERMINED BY THE CITY ENGINEER. REBAR SHALL BE CUT AND DOWELS INSTALLED PER KEY NOTE 3.
- 3 ALL EXPANSION JOINTS SHALL HAVE 1/2" X 18" SMOOTH DOWELS @ 22" O.C., WRAPPED OR GREASED.
- 4 ALL FLOWLINES SHALL HAVE AN 8" WIDE STEEL-TROWEL FINISH.
- 5 6" CLASS 2 AGGREGATE BASE.

GENERAL NOTE:

- 1. CURB RAMPS SHALL BE INSTALLED WITH VALLEY GUTTER FOR MONOLITHIC POUR, NO JOINTS WILL BE ALLOWED.

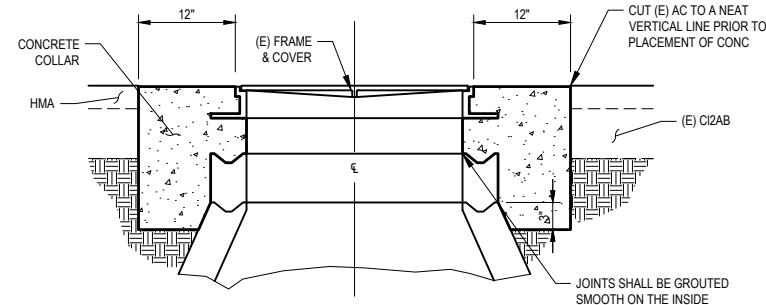


ADJUST TRAFFIC BOX COVER TO GRADE

NOT TO SCALE

NOTES:

- 1. COMPLETELY DEMOLISH EXISTING CONCRETE COLLAR TO A DEPTH OF 12 INCHES. COMPLY WITH COMMUNITY SERVICE DISTRICT STANDARDS.
- 2. ALL UTILITY LIDS SHALL BE FLUSH WITH A TOLERANCE OF NO MORE THAN 1/8" LIP WHEN WITHIN THE TRAVEL LAND AND/OR WHEEL PATH.
- 3. FOR MONUMENTS - SEE SPECIAL PROVISIONS SECTION 78 "INCIDENTAL CONSTRUCTION."
- 4. WHERE PRESENT, THE NEW TRAFFIC BOX SHALL NOT COME INTO CONTACT WITH THE RISER PIPE, AND (E) #10 COPPER TRACE WIRE SHALL BE THREADED AS SHOWN.

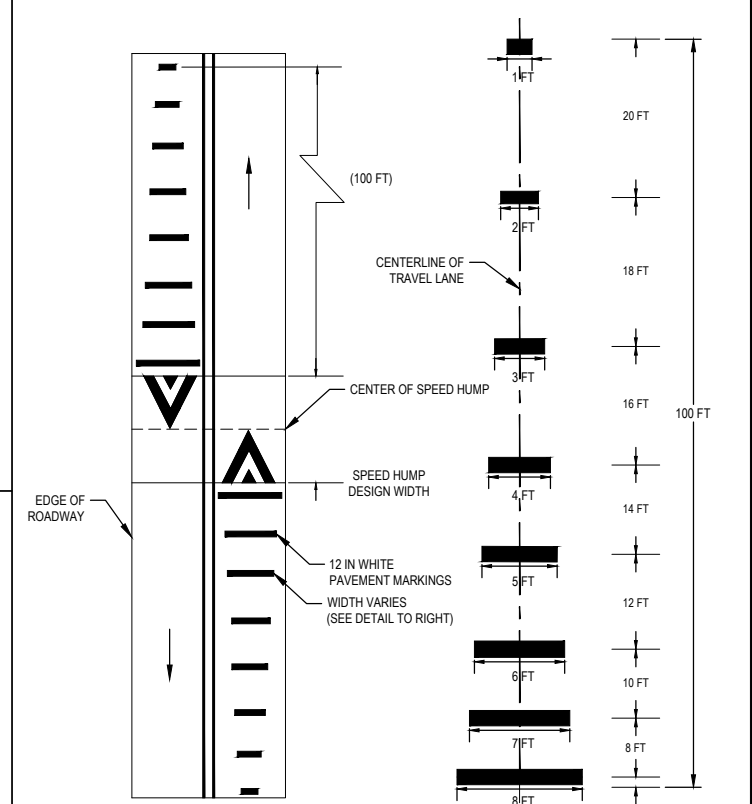


ADJUST MANHOLE COVER TO GRADE

NOT TO SCALE

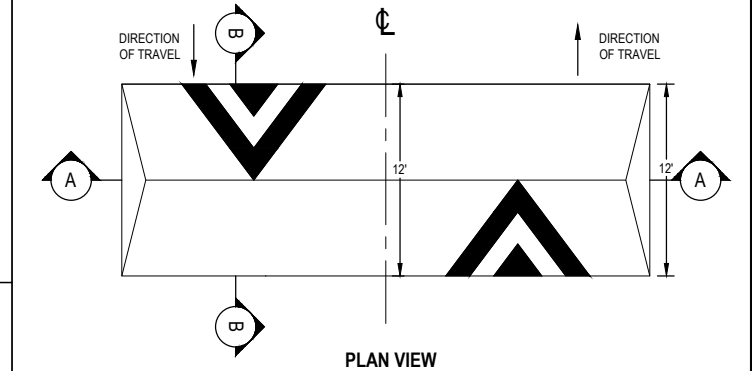
NOTES:

- 1. SHIMS SHALL BE PLACED UNDER THE MANHOLE FRAME & LID ON TOP OF THE HIGHEST GRADE RING AS NEEDED SUCH THAT THE FRAME & LID ARE FLUSH WITH THE FINISHED GRADE OF THE STREET. THE MINIMUM SHIM HEIGHT IS ONE INCH. CONCRETE SHALL BE PLACED IN BETWEEN THE HIGHEST GRADE RING AND THE SHIMMED FRAME & LID WHEN THE CONCRETE COLLAR IS CONSTRUCTED, IN EFFECT CREATING A 'CAST-IN-PLACE' GRADE RING OF VARYING THICKNESS.
- 2. ALL MANHOLE LIDS SHALL BE FLUSH WITH A TOLERANCE OF NO MORE THAN 1/8" LIP WHEN WITHIN THE TRAVEL LAND AND/OR WHEEL PATH.



SPEED HUMP ADVANCE WARNING MARKINGS

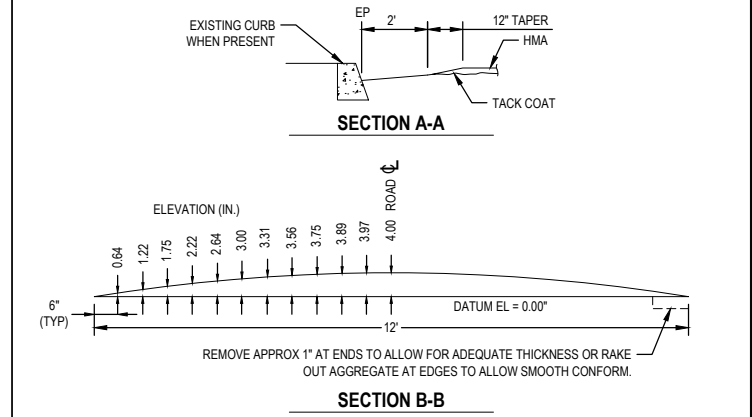
NOT TO SCALE



PLAN VIEW

NOTES:

- 1. THE SPEED HUMPS SHALL BE CONSTRUCTED OUT OF ASPHALT THAT CAN SUPPORT THE IMPOSED LOADS WITH A TOTAL WEIGHT OF 68,000 POUNDS (46,000 POUNDS ON TANDEM REAR AXLES AND 22,000 POUNDS ON THE FRONT AXLE).

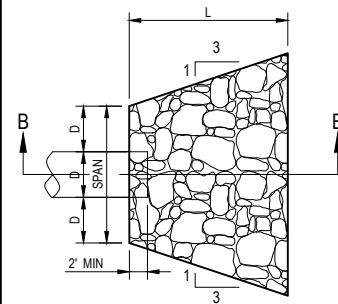


SECTION A-A

SECTION B-B

SPEED HUMP

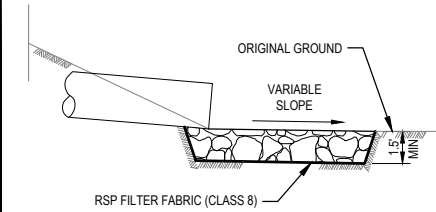
NOT TO SCALE



STATION (SIZE/CONFIGURATION OF PIPE(S))	SPAN OF APRON (FT)	LENGTH OF APRON L (FT)	VOLUME OF RSP (CF)
STA 62+75.89 (18" PP)	4.5	6	58.5

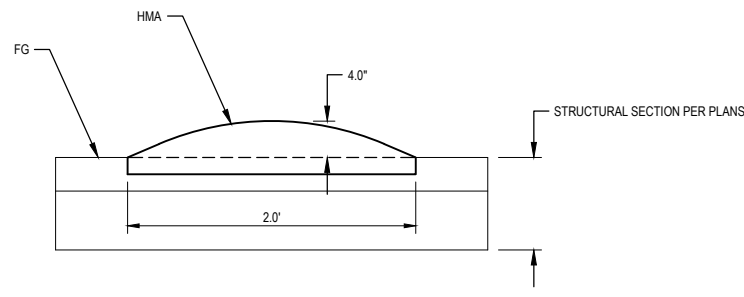
NOTES:

- 1. EXCAVATION FOR PLACEMENT OF RSP WILL NOT BE MEASURED FOR PAYMENT.
- 2. RSP FABRIC WILL NOT BE MEASURED FOR PAYMENT.



RSP ENERGY DISSIPATER

NOT TO SCALE



HMA SPEED BUMP

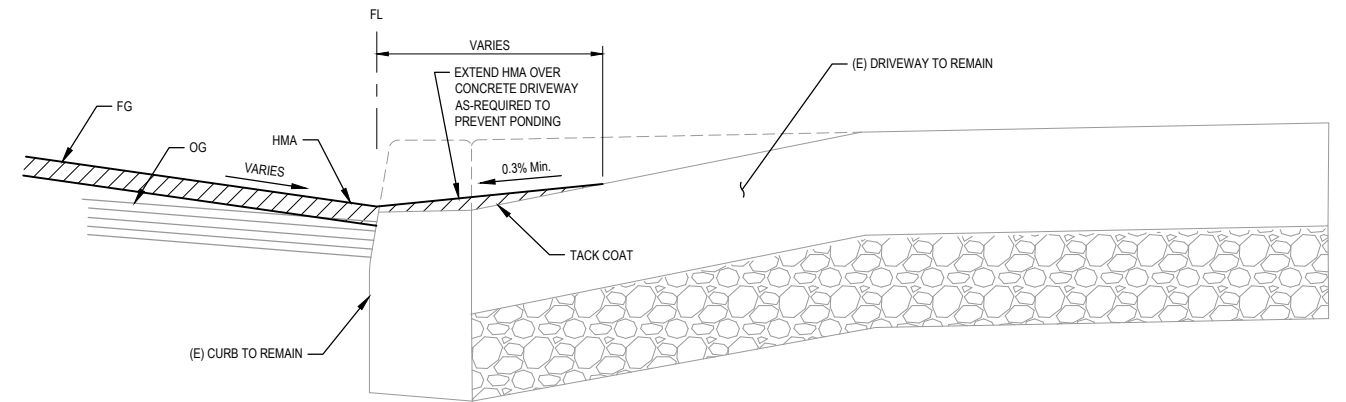
NOT TO SCALE



GHD Inc.
718 Third Street
Eureka California 95501 USA
T 1 707 443 8326 F 1 707 444 8330 W www.ghd.com

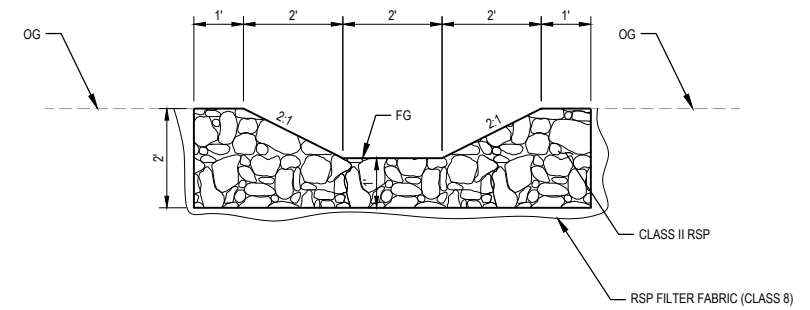


BAR IS ONE INCH ON ORIGINAL DRAWING IF NOT ONE INCH ON THIS SHEET, ADJUST SCALES ACCORDINGLY	ROAD NAME: CEDAR STREET AND REDWOOD STREET	DESIGN SECTION: ENGINEERING	COUNTY OF HUMBOLDT DEPARTMENT OF PUBLIC WORKS	SHEET 20 OF 20
	ROAD NO.: 3K280 & 3K260 MILE POST: 0.32-0.72 & 0.00-0.23	DESIGNED BY: J.VANEGAS	CEDAR STREET AND REDWOOD STREET REHABILITATION	
	PROJECT NO.: N/A	DRAWN BY: T.CINCEBEAUX	CONSTRUCTION DETAILS	
	CONTRACT NO.: 342006	REVIEWED BY: J.WOLF		
	DRAWING FILE NAME: 12695149-GHD-00-00-RWY-CI-D501.dwg	APPROVED BY: J.WOLF		
	PLOT DATE: 6/9/2026	REVISION DATE:		



DRIVEWAY RETROFIT

NOT TO SCALE



NOTES:

- EXCAVATION FOR PLACEMENT OF RSP WILL NOT BE MEASURED FOR PAYMENT.
- RSP FABRIC WILL NOT BE MEASURED FOR PAYMENT

ROCK-LINED DITCH

NOT TO SCALE