

NOTES FROM MATEEL COMMUNITY MTG. in PIERCY

PIERCY COMMUNITY HALL (3-29-26)

Attendees:

Steve Lazar, Humboldt County Planning & Building Dept.

Shannon Taliafero, Mateel Community Center, Board President

Alisha Goodrich, Mateel

Cheri Porter Keisner, Piercy resident

Rickey Frank, Yurok/Pomo Elder, Piercy resident

Paul Radman, Mateel, Fire, Traffic

Season George, Cooks Valley resident, 5 Sisters Farm

Pheobe, Mateel Security

Elena V, Mateel Office Manager

Cassandra Taliafero, Mateel – IC Structure / Planning Sections Chief

Pete Genorio, Redway Fire

Jacob, Kneeland Fire

Piercy Fire Protection District

Larry Casteel, Piercy resident, Board member PFPD

Judith Casteel, Piercy resident, Board member PFPD

Felicia Evergreen, Piercy

Delbert Chumley, Piercy resident, Assistant Fire Chief

Sarah Kirk Cardoza, Piercy resident

Drew Cardoza, Piercy Fire Captain

CAL-FIRE – Leggett

Patrick Dowd, Piercy resident

Felicia Evergreen, Piercy resident

INITIAL LIST OF ITEMS TO DISCUSS (IDENTIFIED BY GROUP)

Cheri Porter Keisner

- Piercy Community Liason Position
- Who's Responsible for Roving Patrols?
- Closure of Local Roads?
- Where can local residents legally park?
- Staff offsite – make sure they have radios

Season George

- Upholding MOU's
- Security
- Insurance Policy
- How to file an Incident Report

Larry Casteel

- Concern about evacuation plan
 - How will people evacuate event site during an emergency?
- People camping along Hwy. 271, illegal trespass

Other items

- Early Arrivals & Post Event Lingering
- Post Event Community Mtg. w/ residents
- Including Piercy resident Liason in Safety Mtgs.

Good places to post public notice:

- Patriot Gas Station
- Bulletin Board by Piercy P.O. boxes
- Piercy Neighborhood Watch FB page
- Piercy Community Center/Hall
- Fire Dept. website
- Piercy FPD website

Piercy Resident (parking) passes

- Print on passes important info:
 - emergency hotline phone #
 - email address
- passes should be made available to residents at least one week prior to the event (preferably earlier)

PIERCY AREA “LOCAL TRAFFIC ONLY” signage

- McKellar’s 271
- Post Office Site
- Fire Dept.

SEE MAP CREATED

After Dark Patrols

- Boat Ramp
- Use CHP or Mend. County Sheriff if possible

IMPORTANT TO HAVE A KNOWN PIERCY CONTACT/LIASON**Season George**

- Historically has had security at her gate & driveway
- Security Box Office at the end of the road?
- Ms. George approached Jason Cox from Mateel’s security team and reports she was told that no security would be provided for her property. It was noted by some at the meeting that the security contractor seemed understaffed.
- Asked why insurance was not covering her property and was told by Mateel rep’s that insurance carrier would only cover properties being used by the Mateel as part of the event.

Cheri Porter Keisner

Observed vehicles parked at numerous spots along Hwy 271:

- 8 vehicles at every spot?
- 3 at Patrick Dowd’s place
- also observed folks parked at Boat Ramp spot

Peter Genolio / Redway Fire Protection District

- The Critical Incident Team includes rep's from key event personnel:
 - Traffic
 - Parking
 - Medical
 - Security
 - Fire
- Local residents need to put some trust in the people tasked with managing the event and its safety
- There is a written plan for Emergency Response
 - There are different approaches to managing different scenarios
 - Total evacuation of the site is likely the “worst case scenario”
 - The internal road network on CLR/Dimmick Ranch is adequate to accommodate simultaneous ingress and egress during an emergency. Use of the Caltrans ROW (shared by Season George as her driveway) is not necessary



PIERCY AREA MAP showing candidate locations for "LOCAL TRAFFIC ONLY" signage and patrol during events

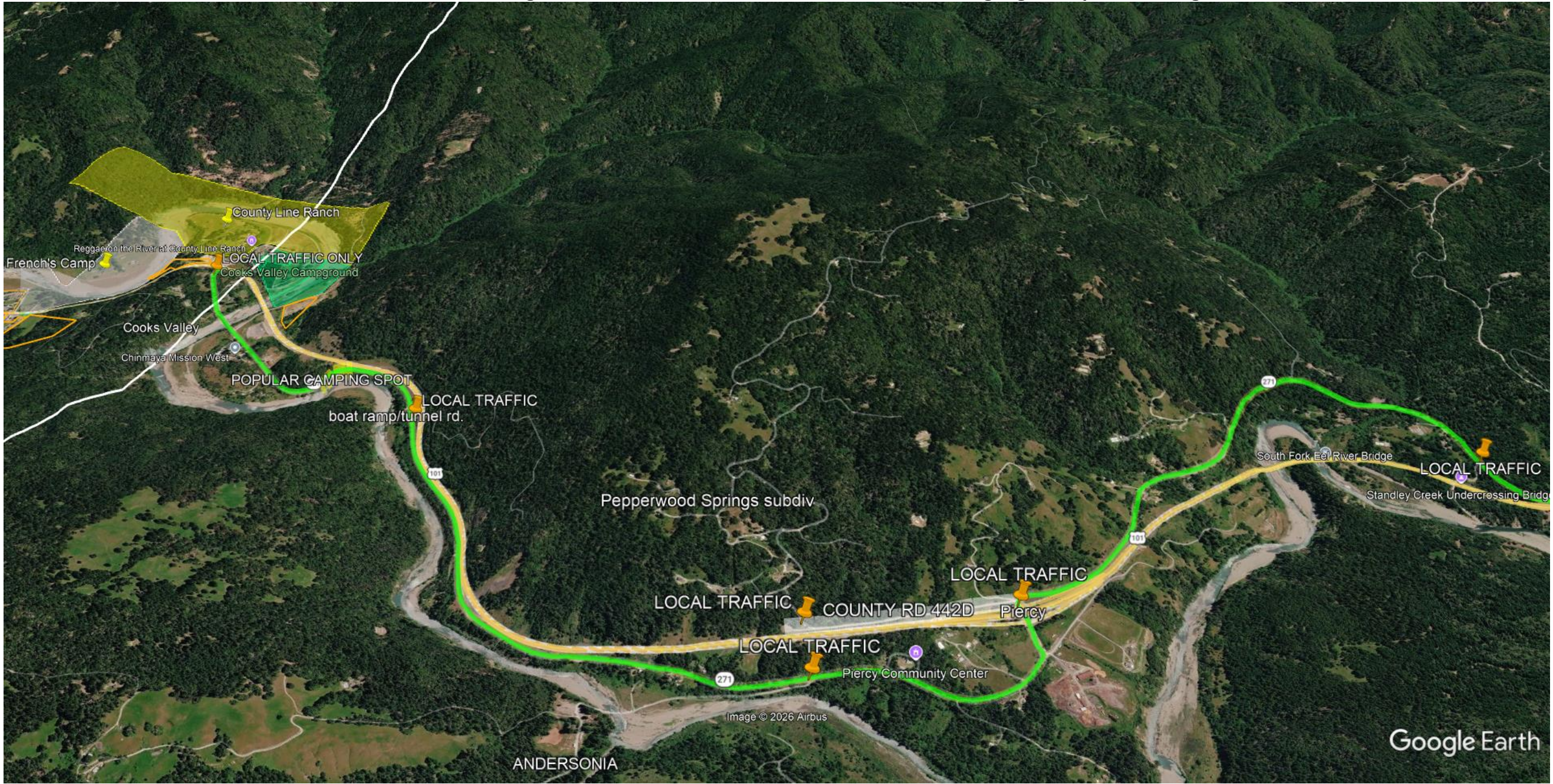


Image © 2026 Airbus

Google Earth