



COUNTY OF HUMBOLDT
PLANNING AND BUILDING DEPARTMENT
CURRENT PLANNING
3015 H STREET, EUREKA, CA 95501 ~ PHONE (707) 445-7245

11/9/2020

Project Referred To The Following Agencies:

Bear River Band, Building Inspections, PW Land Use, Environmental Health, Other: Six Rivers National Forest, County Counsel, Cal Fish & Wildlife, RWQCB, NCUAQMD, District Attorney, AG Commissioner, CA Division of Water Rights, FPD: Southern Trinity VFD, School District: Southern Trinity JUSD, CalFire, NWIC, Sheriff, CalTrans Dist 1, Other: Airport Director

Applicant Name Dinsmore Elite LLC **Key Parcel Number** 208-341-009-000

Application (APPS#) PLN-13238-CUP **Assigned Planner** Elizabeth Moreno 707-268-3713

Please review the above project and provide comments with any recommended conditions of approval. To help us log your response accurately, please include a copy of this form with your correspondence.

Questions concerning this project may be directed to the assigned planner for this project between 8:30am and 5:30pm Monday through Friday.

County Zoning Ordinance allows up to 15 calendar days for a response. If no response or extension request is received by the response date, processing will proceed as proposed.

☐ If this box is checked, please return large format maps with your response.

Return Response No Later Than: 11/24/2020

Planning Clerk
County of Humboldt Planning and Building Department
3015 H Street
Eureka, CA 95501
Email: PlanningClerk@co.humboldt.ca.us **Fax:** (707) 268 - 3792

We have reviewed the above application and recommend the following (please check one):

- ☐ Recommend Approval. The department has no comment at this time.
- ☐ Recommend Conditional Approval. Suggested conditions attached.
- ☐ Applicant needs to submit additional information. List of items attached.
- ☐ Recommend Denial. Attach reasons for recommended denial.

Other Comments: _____

DATE: 12.01.2020

PRINT NAME: Cody Rogatz





Mail Processing Center
Federal Aviation Administration
Southwest Regional Office
Obstruction Evaluation Group
10101 Hillwood Parkway
Fort Worth, TX 76177

Aeronautical Study No.
2019-AWP-8232-OE

13238
208-341-009

Issued Date: 08/12/2019

Marcel Onate
Marcel Onate
675 Corbett Avenue
San Francisco, CA 94414



**** DETERMINATION OF NO HAZARD TO AIR NAVIGATION ****

The Federal Aviation Administration has conducted an aeronautical study under the provisions of 49 U.S.C., Section 44718 and if applicable Title 14 of the Code of Federal Regulations, part 77, concerning:

Structure:	Building Greenhouse 1
Location:	Bridgeville, CA
Latitude:	40-29-08.00N NAD 83
Longitude:	123-34-26.00W
Heights:	2892 feet site elevation (SE) 11 feet above ground level (AGL) 2903 feet above mean sea level (AMSL)

This aeronautical study revealed that the structure does exceed obstruction standards but would not be a hazard to air navigation provided the following condition(s), if any, is(are) met:

Based on this evaluation, marking and lighting are not necessary for aviation safety. However, if marking/lighting are accomplished on a voluntary basis, we recommend it be installed in accordance with FAA Advisory circular 70/7460-1 L Change 2.

This determination is based, in part, on the foregoing description which includes specific coordinates, heights, frequency(ies) and power. Any changes in coordinates, heights, and frequencies or use of greater power except those frequencies specified in the Colo Void Clause Coalition; Antenna System Co-Location; Voluntary Best Practices, effective 21 Nov 2007, will void this determination. Any future construction or alteration including increase to heights, power, or the addition of other transmitters, requires separate notice to the FAA. This determination includes all previously filed frequencies and power for this structure.

If construction or alteration is dismantled or destroyed, you must submit notice to the FAA within 5 days after the construction or alteration is dismantled or destroyed.

This determination does include temporary construction equipment such as cranes, derricks, etc., which may be used during actual construction of the structure. However, this equipment shall not exceed the overall heights as indicated above. Equipment which has a height greater than the studied structure requires separate notice to the FAA.



This determination concerns the effect of this structure on the safe and efficient use of navigable airspace by aircraft and does not relieve the sponsor of compliance responsibility relating to any law, ordinance, or regulation of any Federal, State, or local government body.

This aeronautical study included evaluation of a structure that exists at this time. Action will be taken to ensure aeronautical charts are updated to reflect the most current coordinates, elevation and height as indicated in the case description.

If we can be of further assistance, please contact our office at (424) 405-7643, or karen.mcdonald@faa.gov. On any future correspondence concerning this matter, please refer to Aeronautical Study Number 2019-AWP-8232-OE.

Signature Control No: 410485652-414111787

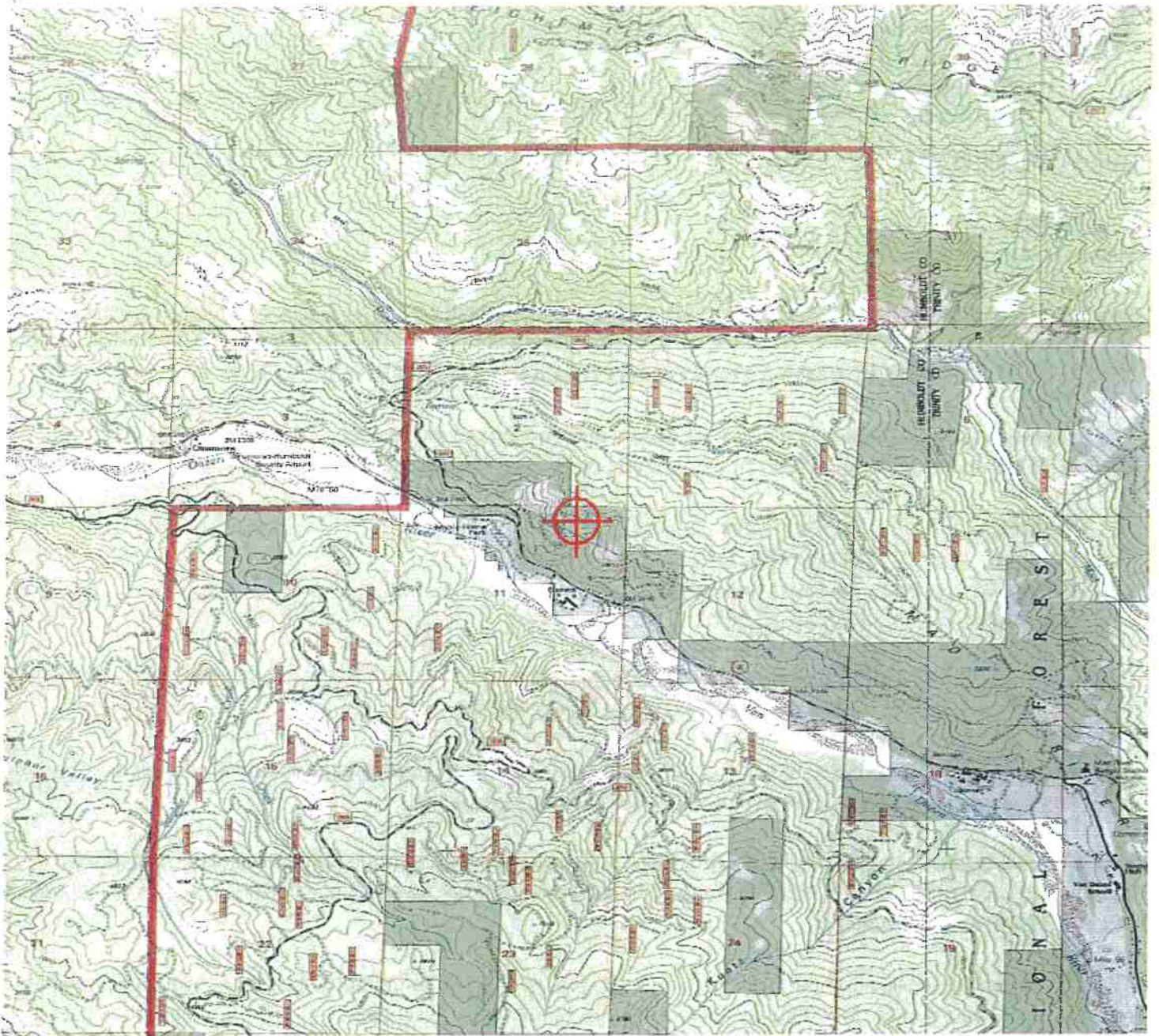
(EBO)

Karen McDonald

Specialist

Attachment(s)

Map(s)





Mail Processing Center
Federal Aviation Administration
Southwest Regional Office
Obstruction Evaluation Group
10101 Hillwood Parkway
Fort Worth, TX 76177

Aeronautical Study No.
2019-AWP-8233-OE

Issued Date: 08/12/2019

Marcel Onate
Marcel Onate
675 Corbett Avenue
San Francisco, CA 94414

**** DETERMINATION OF NO HAZARD TO AIR NAVIGATION ****

The Federal Aviation Administration has conducted an aeronautical study under the provisions of 49 U.S.C., Section 44718 and if applicable Title 14 of the Code of Federal Regulations, part 77, concerning:

Structure:	Building Greenhouse 2
Location:	Bridgeville, CA
Latitude:	40-29-07.00N NAD 83
Longitude:	123-34-25.00W
Heights:	2895 feet site elevation (SE) 12 feet above ground level (AGL) 2907 feet above mean sea level (AMSL)

This aeronautical study revealed that the structure does exceed obstruction standards but would not be a hazard to air navigation provided the following condition(s), if any, is(are) met:

Based on this evaluation, marking and lighting are not necessary for aviation safety. However, if marking/lighting are accomplished on a voluntary basis, we recommend it be installed in accordance with FAA Advisory circular 70/7460-1 L Change 2.

This determination is based, in part, on the foregoing description which includes specific coordinates, heights, frequency(ies) and power. Any changes in coordinates, heights, and frequencies or use of greater power except those frequencies specified in the Colo Void Clause Coalition; Antenna System Co-Location; Voluntary Best Practices, effective 21 Nov 2007, will void this determination. Any future construction or alteration including increase to heights, power, or the addition of other transmitters, requires separate notice to the FAA. This determination includes all previously filed frequencies and power for this structure.

If construction or alteration is dismantled or destroyed, you must submit notice to the FAA within 5 days after the construction or alteration is dismantled or destroyed.

This determination does include temporary construction equipment such as cranes, derricks, etc., which may be used during actual construction of the structure. However, this equipment shall not exceed the overall heights as indicated above. Equipment which has a height greater than the studied structure requires separate notice to the FAA.

This determination concerns the effect of this structure on the safe and efficient use of navigable airspace by aircraft and does not relieve the sponsor of compliance responsibilities related to any law, ordinance, or regulation of any Federal, State, or local government body.

This aeronautical study included evaluation of a structure that exists at this time. Action will be taken to ensure aeronautical charts are updated to reflect the most current coordinates, elevation and height as indicated in the case description.

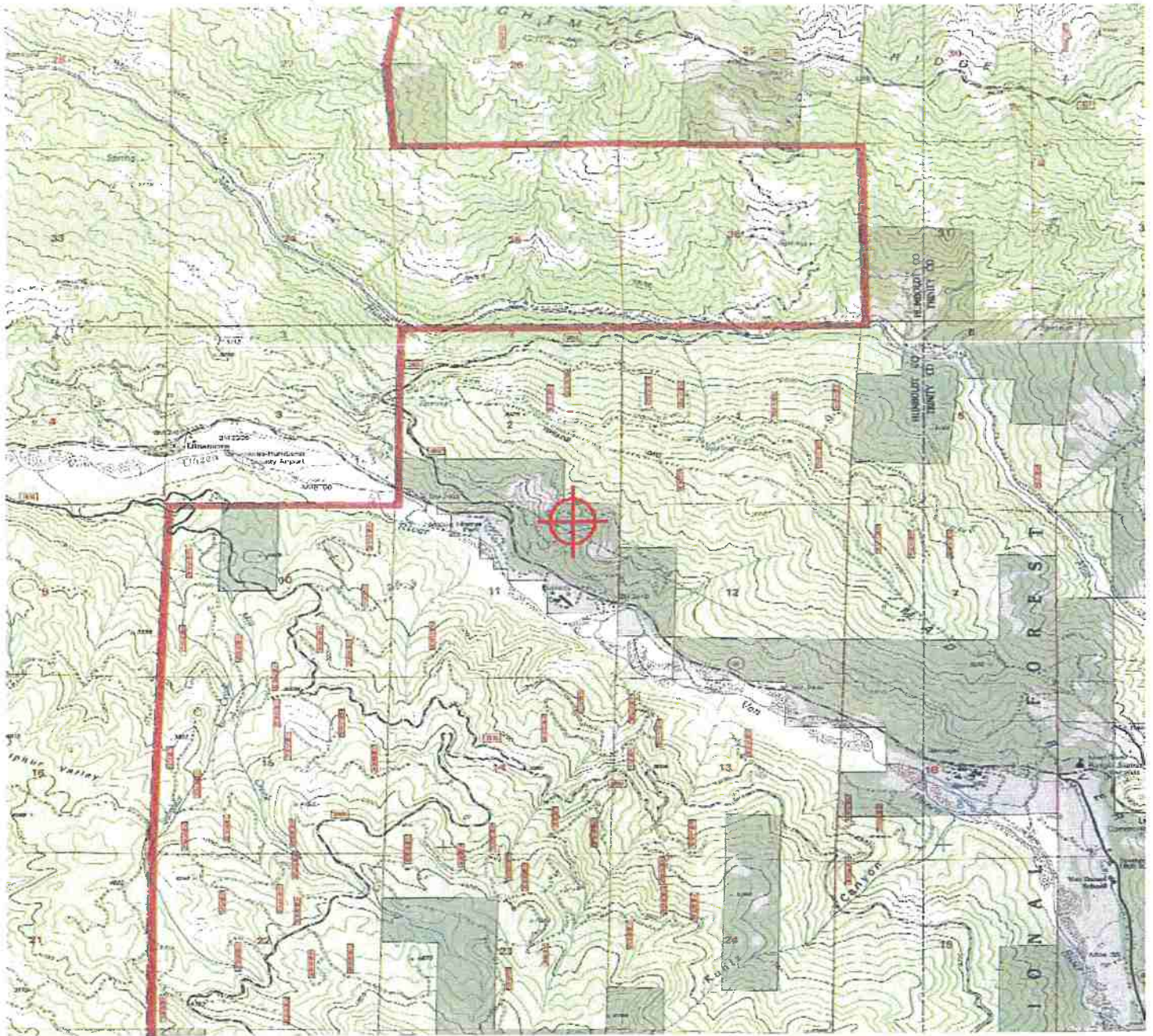
If we can be of further assistance, please contact our office at (424) 405-7643, or karen.mcdonald@faa.gov. On any future correspondence concerning this matter, please refer to Aeronautical Study Number 2019-AWP-8233-OE.

Signature Control No: 410485653-414111803

(EBO)

Karen McDonald
Specialist

Attachment(s)
Map(s)





Mail Processing Center
Federal Aviation Administration
Southwest Regional Office
Obstruction Evaluation Group
10101 Hillwood Parkway
Fort Worth, TX 76177

Aeronautical Study No.
2019-AWP-8234-OE

Issued Date: 08/12/2019

Marcel Onate
Marcel Onate
675 Corbett Avenue
San Francisco, CA 94414

**** DETERMINATION OF NO HAZARD TO AIR NAVIGATION ****

The Federal Aviation Administration has conducted an aeronautical study under the provisions of 49 U.S.C., Section 44718 and if applicable Title 14 of the Code of Federal Regulations, part 77, concerning:

Structure:	Building Greenhouse 3
Location:	Bridgeville, CA
Latitude:	40-29-07.00N NAD 83
Longitude:	123-34-25.00W
Heights:	2895 feet site elevation (SE) 11 feet above ground level (AGL) 2906 feet above mean sea level (AMSL)

This aeronautical study revealed that the structure does exceed obstruction standards but would not be a hazard to air navigation provided the following condition(s), if any, is(are) met:

Based on this evaluation, marking and lighting are not necessary for aviation safety. However, if marking/lighting are accomplished on a voluntary basis, we recommend it be installed in accordance with FAA Advisory circular 70/7460-1 L Change 2.

This determination is based, in part, on the foregoing description which includes specific coordinates, heights, frequency(ies) and power. Any changes in coordinates, heights, and frequencies or use of greater power except those frequencies specified in the Colo Void Clause Coalition; Antenna System Co-Location; Voluntary Best Practices, effective 21 Nov 2007, will void this determination. Any future construction or alteration including increase to heights, power, or the addition of other transmitters, requires separate notice to the FAA. This determination includes all previously filed frequencies and power for this structure.

If construction or alteration is dismantled or destroyed, you must submit notice to the FAA within 5 days after the construction or alteration is dismantled or destroyed.

This determination does include temporary construction equipment such as cranes, derricks, etc., which may be used during actual construction of the structure. However, this equipment shall not exceed the overall heights as indicated above. Equipment which has a height greater than the studied structure requires separate notice to the FAA.

This determination concerns the effect of this structure on the safe and efficient use of navigable airspace by aircraft and does not relieve the sponsor of compliance responsibility relating to any law, ordinance, or regulation of any Federal, State, or local government body.

This aeronautical study included evaluation of a structure that exists at this time. Action will be taken to ensure aeronautical charts are updated to reflect the most current coordinates, elevation and height as indicated in the case description.

If we can be of further assistance, please contact our office at (424) 405-7643, or karen.mcdonald@faa.gov. On any future correspondence concerning this matter, please refer to Aeronautical Study Number 2019-AWP-8234-OE.

Signature Control No: 410485654-414111785

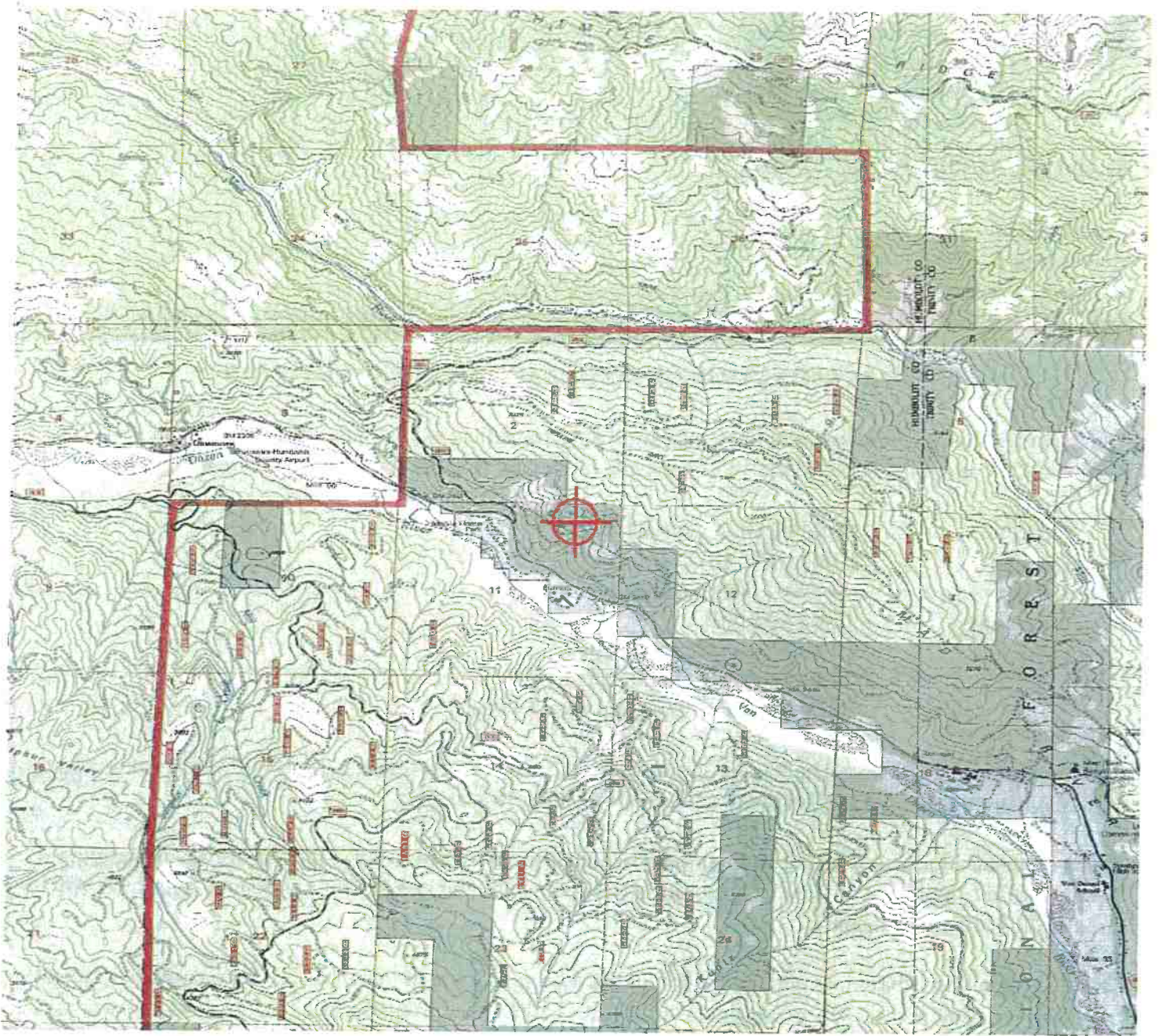
(EBO)

Karen McDonald

Specialist

Attachment(s)

Map(s)





Mail Processing Center
Federal Aviation Administration
Southwest Regional Office
Obstruction Evaluation Group
10101 Hillwood Parkway
Fort Worth, TX 76177

Aeronautical Study No.
2019-AWP-8235-OE

Issued Date: 08/12/2019

Marcel Onate
Marcel Onate
675 Corbett Avenue
San Francisco, CA 94414

**** DETERMINATION OF NO HAZARD TO AIR NAVIGATION ****

The Federal Aviation Administration has conducted an aeronautical study under the provisions of 49 U.S.C., Section 44718 and if applicable Title 14 of the Code of Federal Regulations, part 77, concerning:

Structure:	Building Greenhouse 4
Location:	Bridgeville, CA
Latitude:	40-29-07.00N NAD 83
Longitude:	123-34-21.00W
Heights:	2917 feet site elevation (SE) 18 feet above ground level (AGL) 2935 feet above mean sea level (AMSL)

This aeronautical study revealed that the structure does exceed obstruction standards but would not be a hazard to air navigation provided the following condition(s), if any, is(are) met:

Based on this evaluation, marking and lighting are not necessary for aviation safety. However, if marking/lighting are accomplished on a voluntary basis, we recommend it be installed in accordance with FAA Advisory circular 70/7460-1 L Change 2.

This determination is based, in part, on the foregoing description which includes specific coordinates, heights, frequency(ies) and power. Any changes in coordinates, heights, and frequencies or use of greater power except those frequencies specified in the Colo Void Clause Coalition; Antenna System Co-Location; Voluntary Best Practices, effective 21 Nov 2007, will void this determination. Any future construction or alteration including increase to heights, power, or the addition of other transmitters, requires separate notice to the FAA. This determination includes all previously filed frequencies and power for this structure.

If construction or alteration is dismantled or destroyed, you must submit notice to the FAA within 5 days after the construction or alteration is dismantled or destroyed.

This determination does include temporary construction equipment such as cranes, derricks, etc., which may be used during actual construction of the structure. However, this equipment shall not exceed the overall heights as indicated above. Equipment which has a height greater than the studied structure requires separate notice to the FAA.

This determination concerns the effect of this structure on the safe and efficient use of navigable airspace by aircraft and does not relieve the sponsor of compliance responsibilities relating to any law, ordinance, or regulation of any Federal, State, or local government body.

This aeronautical study included evaluation of a structure that exists at this time. Action will be taken to ensure aeronautical charts are updated to reflect the most current coordinates, elevation and height as indicated in the case description.

If we can be of further assistance, please contact our office at (424) 405-7643, or karen.mcdonald@faa.gov. On any future correspondence concerning this matter, please refer to Aeronautical Study Number 2019-AWP-8235-OE.

Signature Control No: 410485655-414111801

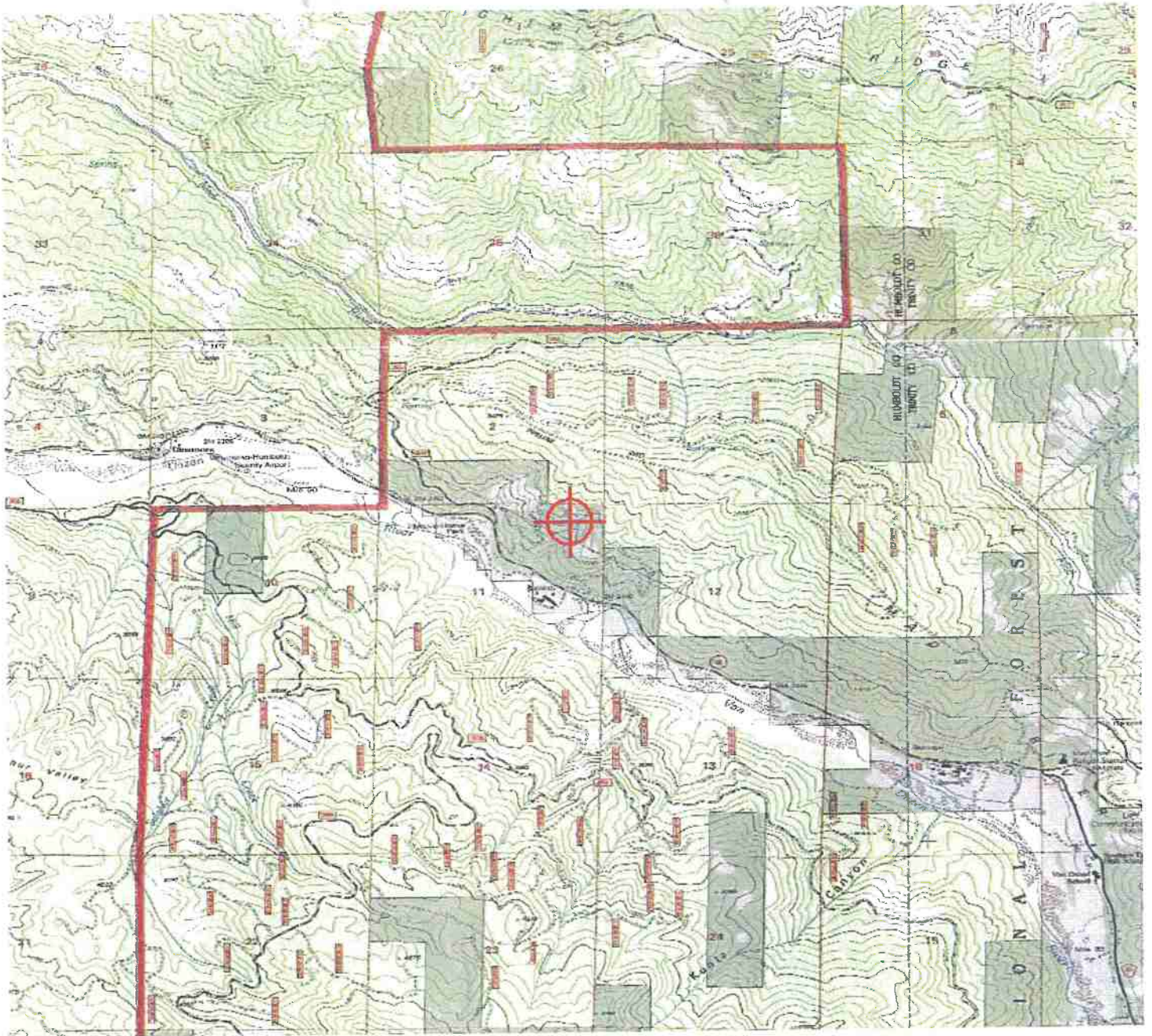
(EBO)

Karen McDonald

Specialist

Attachment(s)

Map(s)





Mail Processing Center
Federal Aviation Administration
Southwest Regional Office
Obstruction Evaluation Group
10101 Hillwood Parkway
Fort Worth, TX 76177

Aeronautical Study No.
2019-AWP-8237-OE

Issued Date: 08/12/2019

Marcel Onate
Marcel Onate
675 Corbett Avenue
San Francisco, CA 94414

**** DETERMINATION OF NO HAZARD TO AIR NAVIGATION ****

The Federal Aviation Administration has conducted an aeronautical study under the provisions of 49 U.S.C., Section 44718 and if applicable Title 14 of the Code of Federal Regulations, part 77, concerning:

Structure:	Building Pesticide Storage
Location:	Bridgeville, CA
Latitude:	40-29-07.00N NAD 83
Longitude:	123-34-25.00W
Heights:	2931 feet site elevation (SE) 8 feet above ground level (AGL) 2939 feet above mean sea level (AMSL)

This aeronautical study revealed that the structure does exceed obstruction standards but would not be a hazard to air navigation provided the following condition(s), if any, is(are) met:

Based on this evaluation, marking and lighting are not necessary for aviation safety. However, if marking/lighting are accomplished on a voluntary basis, we recommend it be installed in accordance with FAA Advisory circular 70/7460-1 L Change 2.

This determination is based, in part, on the foregoing description which includes specific coordinates, heights, frequency(ies) and power. Any changes in coordinates, heights, and frequencies or use of greater power except those frequencies specified in the Colo Void Clause Coalition; Antenna System Co-Location; Voluntary Best Practices, effective 21 Nov 2007, will void this determination. Any future construction or alteration including increase to heights, power, or the addition of other transmitters, requires separate notice to the FAA. This determination includes all previously filed frequencies and power for this structure.

If construction or alteration is dismantled or destroyed, you must submit notice to the FAA within 5 days after the construction or alteration is dismantled or destroyed.

This determination does include temporary construction equipment such as cranes, derricks, etc., which may be used during actual construction of the structure. However, this equipment shall not exceed the overall heights as indicated above. Equipment which has a height greater than the studied structure requires separate notice to the FAA.

This determination concerns the effect of this structure on the safe and efficient use of navigable airspace by aircraft and does not relieve the sponsor of compliance responsibility relating to any law, ordinance, or regulation of any Federal, State, or local government body.

This aeronautical study included evaluation of a structure that exists at this time. Action will be taken to ensure aeronautical charts are updated to reflect the most current coordinates, elevation and height as indicated in the case description.

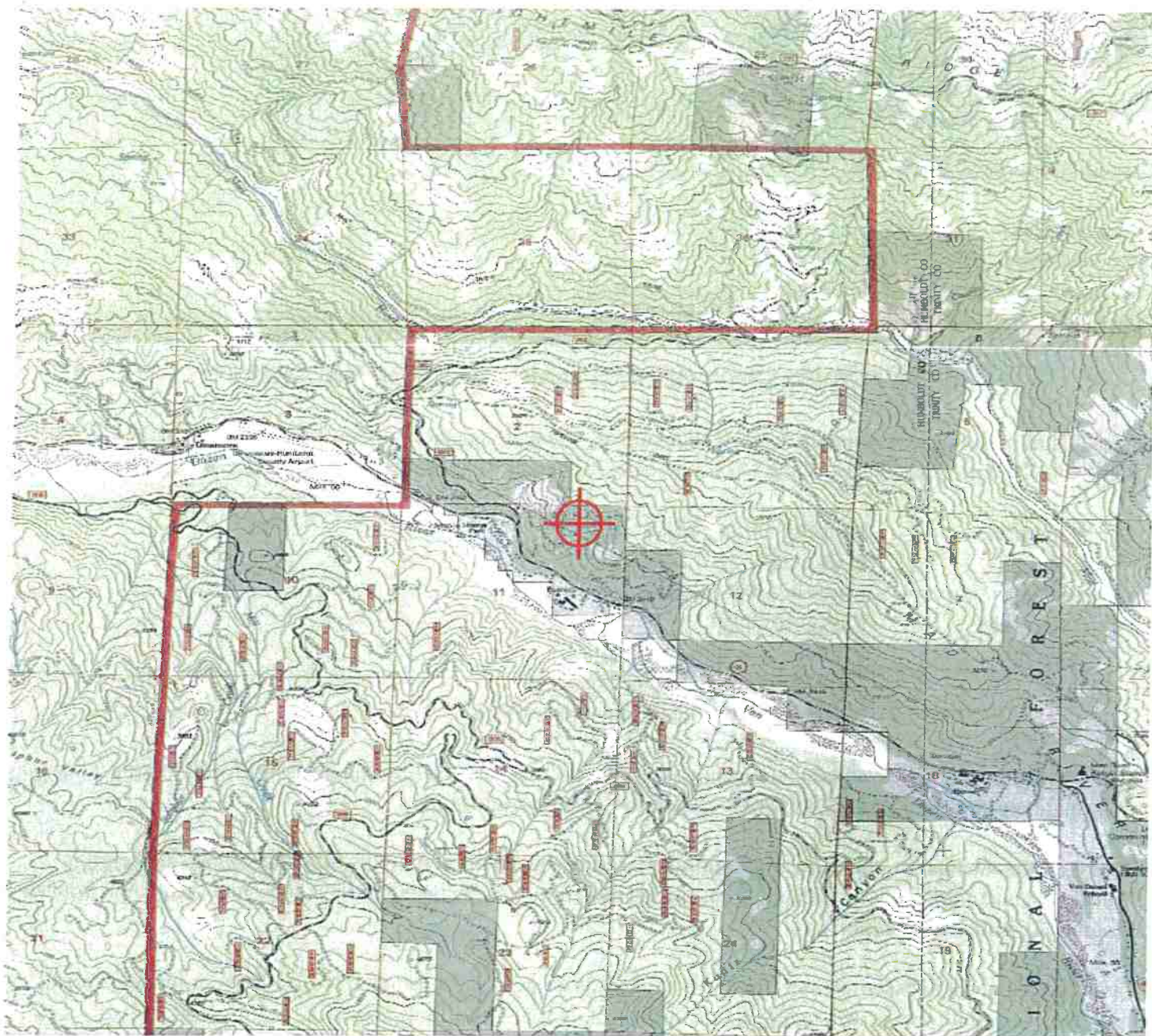
If we can be of further assistance, please contact our office at (424) 405-7643, or karen.mcdonald@faa.gov. On any future correspondence concerning this matter, please refer to Aeronautical Study Number 2019-AWP-8237-OE.

Signature Control No: 410485657-414111783

(EBO)

Karen McDonald
Specialist

Attachment(s)
Map(s)





Mail Processing Center
Federal Aviation Administration
Southwest Regional Office
Obstruction Evaluation Group
10101 Hillwood Parkway
Fort Worth, TX 76177

Aeronautical Study No.
2019-AWP-8238-OE

Issued Date: 08/12/2019

Marcel Onate
Marcel Onate
675 Corbett Avenue
San Francisco, CA 94414

**** DETERMINATION OF NO HAZARD TO AIR NAVIGATION ****

The Federal Aviation Administration has conducted an aeronautical study under the provisions of 49 U.S.C., Section 44718 and if applicable Title 14 of the Code of Federal Regulations, part 77, concerning:

Structure:	Building Drying Shed
Location:	Bridgeville, CA
Latitude:	40-29-07.00N NAD 83
Longitude:	123-34-25.00W
Heights:	2915 feet site elevation (SE)
	13 feet above ground level (AGL)
	2928 feet above mean sea level (AMSL)

This aeronautical study revealed that the structure does exceed obstruction standards but would not be a hazard to air navigation provided the following condition(s), if any, is(are) met:

Based on this evaluation, marking and lighting are not necessary for aviation safety. However, if marking/lighting are accomplished on a voluntary basis, we recommend it be installed in accordance with FAA Advisory circular 70/7460-1 L Change 2.

This determination is based, in part, on the foregoing description which includes specific coordinates, heights, frequency(ies) and power. Any changes in coordinates, heights, and frequencies or use of greater power except those frequencies specified in the Colo Void Clause Coalition; Antenna System Co-Location; Voluntary Best Practices, effective 21 Nov 2007, will void this determination. Any future construction or alteration including increase to heights, power, or the addition of other transmitters, requires separate notice to the FAA. This determination includes all previously filed frequencies and power for this structure.

If construction or alteration is dismantled or destroyed, you must submit notice to the FAA within 5 days after the construction or alteration is dismantled or destroyed.

This determination does include temporary construction equipment such as cranes, derricks, etc., which may be used during actual construction of the structure. However, this equipment shall not exceed the overall heights as indicated above. Equipment which has a height greater than the studied structure requires separate notice to the FAA.

This determination concerns the effect of this structure on the safe and efficient use of navigable airspace by aircraft and does not relieve the sponsor of compliance responsibilities related to any law, ordinance, or regulation of any Federal, State, or local government body.

This aeronautical study included evaluation of a structure that exists at this time. Action will be taken to ensure aeronautical charts are updated to reflect the most current coordinates, elevation and height as indicated in the case description.

If we can be of further assistance, please contact our office at (424) 405-7643, or karen.mcdonald@faa.gov. On any future correspondence concerning this matter, please refer to Aeronautical Study Number 2019-AWP-8238-OE.

Signature Control No: 410485658-414111784

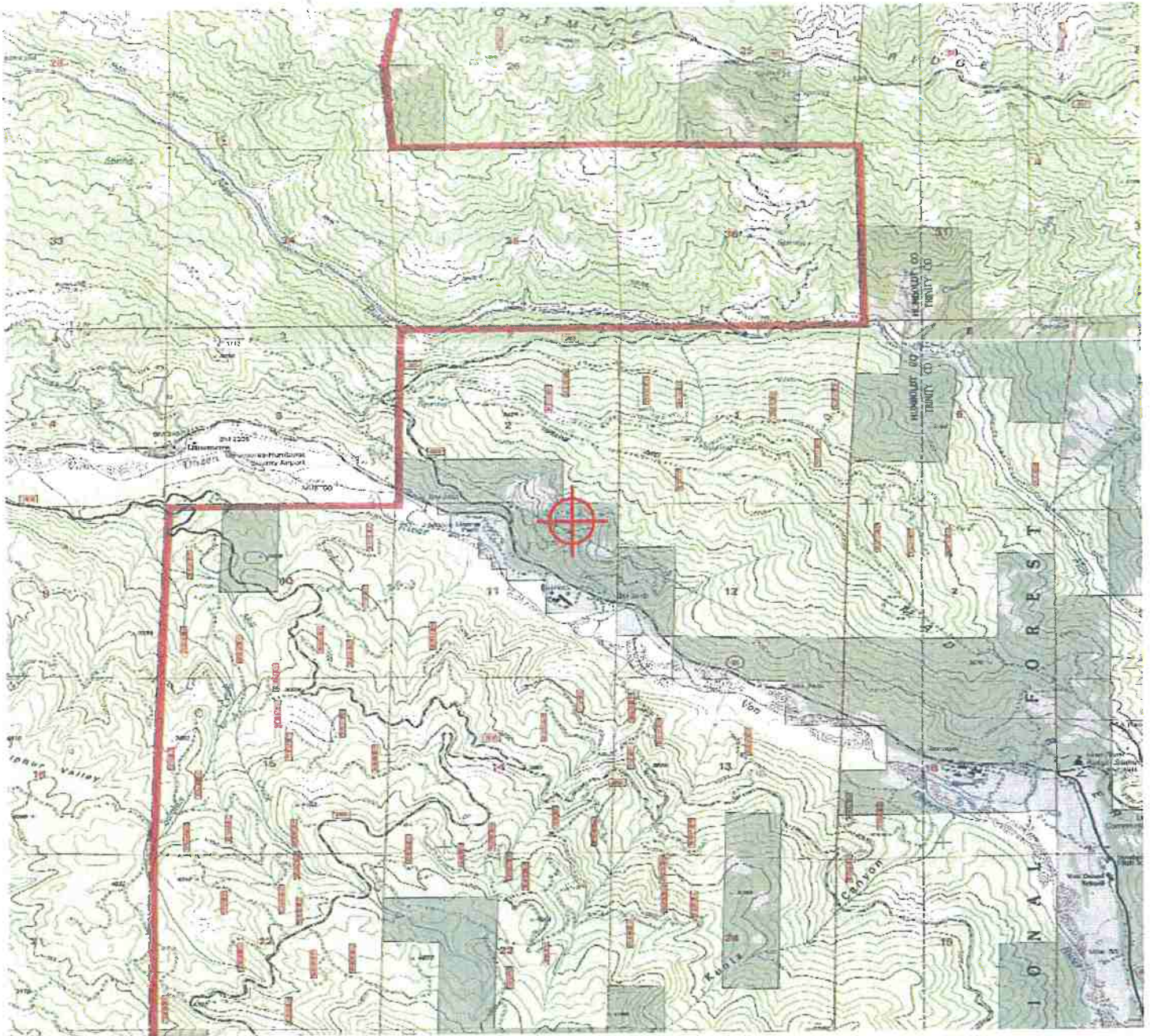
(EBO)

Karen McDonald

Specialist

Attachment(s)

Map(s)





Mail Processing Center
Federal Aviation Administration
Southwest Regional Office
Obstruction Evaluation Group
10101 Hillwood Parkway
Fort Worth, TX 76177

Aeronautical Study No.
2019-AWP-8236-OE

Issued Date: 08/12/2019

Marcel Onate
Marcel Onate
675 Corbett Avenue
San Francisco, CA 94414

**** DETERMINATION OF NO HAZARD TO AIR NAVIGATION ****

The Federal Aviation Administration has conducted an aeronautical study under the provisions of 49 U.S.C., Section 44718 and if applicable Title 14 of the Code of Federal Regulations, part 77, concerning:

Structure:	Building Generator Shed
Location:	Bridgeville, CA
Latitude:	40-29-07.00N NAD 83
Longitude:	123-34-26.00W
Heights:	2931 feet site elevation (SE)
	8 feet above ground level (AGL)
	2939 feet above mean sea level (AMSL)

This aeronautical study revealed that the structure does exceed obstruction standards but would not be a hazard to air navigation provided the following condition(s), if any, is(are) met:

Based on this evaluation, marking and lighting are not necessary for aviation safety. However, if marking/lighting are accomplished on a voluntary basis, we recommend it be installed in accordance with FAA Advisory circular 70/7460-1 L Change 2.

This determination is based, in part, on the foregoing description which includes specific coordinates, heights, frequency(ies) and power. Any changes in coordinates, heights, and frequencies or use of greater power except those frequencies specified in the Colo Void Clause Coalition; Antenna System Co-Location; Voluntary Best Practices, effective 21 Nov 2007, will void this determination. Any future construction or alteration including increase to heights, power, or the addition of other transmitters, requires separate notice to the FAA. This determination includes all previously filed frequencies and power for this structure.

If construction or alteration is dismantled or destroyed, you must submit notice to the FAA within 5 days after the construction or alteration is dismantled or destroyed.

This determination does include temporary construction equipment such as cranes, derricks, etc., which may be used during actual construction of the structure. However, this equipment shall not exceed the overall heights as indicated above. Equipment which has a height greater than the studied structure requires separate notice to the FAA.

This determination concerns the effect of this structure on the safe and efficient use of navigable airspace by aircraft and does not relieve the sponsor of compliance responsibility relating to any law, ordinance, or regulation of any Federal, State, or local government body.

This aeronautical study included evaluation of a structure that exists at this time. Action will be taken to ensure aeronautical charts are updated to reflect the most current coordinates, elevation and height as indicated in the case description.

If we can be of further assistance, please contact our office at (424) 405-7643, or karen.mcdonald@faa.gov. On any future correspondence concerning this matter, please refer to Aeronautical Study Number 2019-AWP-8236-OE.

Signature Control No: 410485656-414111788

(EBO)

Karen McDonald
Specialist

Attachment(s)
Map(s)

