

GLENN ZIEMER, Vice Chair – First District

ERNIE BRANSCOMB, Second District

GINGER CAMPBELL, Third District

NICHOLAS KOHL, Fourth District

VIVIENNA ORCUTT, Fifth District



LORA CANZONERI, At- Large

RICH AMES, At-Large

SEAN ROBERTSON, Fire Chiefs Assoc.

WILLIAM HONSAL, Sheriff's Department

JUSTIN ROBBINS, Alternate

SCOTT BINDER, Alternate

19

CITIZENS' ADVISORY COMMITTEE ON *MEASURE Z* EXPENDITURES

The Humboldt County Citizens' Advisory Committee on *Measure Z* Expenditures is now accepting applications for funding.

Measure Z, Humboldt County's Public Safety/Essential Services Measure, was passed by the voters of Humboldt County in the November 2014 general election.

Measure Z will provide funds to maintain and improve public safety and essential services, such as:

- Investigating violent crimes, including rape and domestic violence;
- Maintaining 911 emergency response times;
- Ensuring on-duty Sheriff's deputies;
- Providing drug treatment programs;
- Providing services for the victims of child abuse;
- Repairing roads;
- Maintaining rural fire protection and ambulance services; and
- Cleaning up environmentally-damaging marijuana farms and illegal dumping.

If you believe you provide public safety or essential services for Humboldt County, and would like to apply for *Measure Z* funding, an application for funding may be obtained on the County's website at www.humboldt.gov.org, or by contacting Elishia Hayes, in the Humboldt County Administrative Office at (707) 445-7266.

APPLICATIONS FOR FUNDING MUST BE FILED WITH THE COUNTY ADMINISTRATIVE OFFICE BY 5:00 P.M. ON February 25, 2019. POSTMARKS ARE NOT ACCEPTABLE FOR MEETING THIS DEADLINE. LATE APPLICATIONS WILL NOT BE CONSIDERED.

Glenn Ziemer

Committee Vice Chair

RECEIVED
FEB 11 2019
CAO



CITIZENS' ADVISORY COMMITTEE ON *MEASURE Z* EXPENDITURES

(Advisory Committee will make recommendations to the Humboldt County Board of Supervisors as to expenditure of funds derived from *Measure Z*.)

APPLICATION FOR FUNDING

Agency Name: Hoopa Fire Department and Office of Emergency Services, Hoopa Valley Tribe
Mailing Address: P.O. Box 369, Hoopa CA 95546
Contact Person: Rod Mendes Title: Chief of Fire and OES
Telephone: 530-62504220 EXT. 0 E-mail address: hoopaoes@gmail.com

1. AMOUNT OF MEASURE Z FUNDING REQUESTED FOR FY ~~2018-19~~: \$ 196,027.23
2019-20

2. ENTITY TYPE -- Please check appropriate box.

- a. Humboldt County Department ☐
- b. Contract Service Provider to Humboldt County ☐
- c. Local Government Entity **XX**
- d. Private Service Provider ☐
- e. Non-Profit Service Provider ☐
- f. Other

3. Please provide brief description of proposal for which you are seeking funding.

The Hoopa Fire Department and Office of Emergency Services has an aggressive Wildland Urban Interface (WUI) program to strategically remove vegetation within and around structures located within the WUI on the valley floor. The WUI program is tribally funded with limited non-recurring tribal funds. Our proposal is to boost the capability of the WUI program by purchasing critically needed equipment to accomplish projects that help to minimize spread of wildland fire, and protect homes and the infrastructure of the Hoopa Valley Tribe and community from potential catastrophic wildfire. The Hoopa Indian Reservation is listed with Cal Fire and in the 2001 Federal register as a "Community at Risk". The Fire Department and OES program is hoping to purchase; 10 handheld radios for personnel communication, 5 mobile radios for vehicle communication, 10 gear packs(PPE), 10 hard hats(PPE), a 1 ton flat-bed truck, a 12 inch woodchipper, and a masticator head for our Track Skid Steer unit to help with WUI projects. The purchase of this equipment will help to sustain our capability in the WUI program by replacing a 1999 1 ton flat bed truck, and purchase a new woodchipper that we desperately need and do not have, and purchase a masticator head that we do not currently have.

4. *Measure Z* funding is scheduled to "sunset" in 2020. How are you developing a plan for sustainability, including diversification of funding sources, in order for your proposal to carry on without reliance on future *Measure Z* funds? Sustainability of this equipment will be accomplished through the use of current WUI funding, and tribal funds to maintain this equipment in good working order. We do have the potential of

applying for maintenance funds for our equipment through the BIA, as well as Grant funding that we do occasionally receive. If all else fails we do have tribal general funds that may become available. The Fire Dept and OES have a maintenance program for the upkeep and maintenance of all equipment within our fleet. This equipment will be added to our fleet maintenance program and maintained as a high quality piece of equipment, with periodic maintenance performed on an annual basis or sooner if needed.

5. If this request is for the continuation, or expansion, of an existing program/service, what is the current source of funding for that program/service? The Wildland urban Interface program is currently funded with non-recurring BIA funds that are ear marked for WUI work. Tribal funds that are from either the general fund or the Indirect funds. No federal funds are used for this program with regard to compact federal funds.

6. If you are awarded *Measure Z* funds, how will you use them to leverage additional grants, contributions, or community support? The Fire Department and OES have applied for grant funding to do shaded fuel breaks through a strategic planning process. We also have community support with our CWPP that is in place and drives some or most of our decisions about placement of WUI work. We are also in discussion with the BIA to request additional funds for personnel and support for planning. We feel that we can use the requested equipment to further leverage assistance from multiple funding sources, by boosting our capability to accomplish project work.

7. Will this proposal require new or expanded activity on the part of another entity to be fully functional and effective? If so, please describe. This proposal does not require new or expanded activity on the part of another entity to be fully functional and effective. It will benefit the Hoopa Fire Department And OES WUI program.

8. Are there recurring expenses associated to this application, such as personnel costs? Please check yes or no and if so, please detail those expenses. ☐ Yes ☒ No

ATTACHMENTS—Please include the following with your application

Proposal Narrative: Brief description of your request for *Measure Z* funds – Please explain how it is an essential service or for public safety. (one page maximum)

Prior Year Results: If your request is a continuation of a program funded with *Measure Z* in prior fiscal years, please provide the results of implementation. (one page maximum)

Program Budget

I declare under penalty of perjury under the laws of the State of California that the above statements and all attachments are true and correct

DATE: January 23, 2019

SIGNATURE: 

SUBMIT THIS APPLICATION TO:

Humboldt County Citizens' Advisory Committee on *Measure Z* Expenditures
c/o County Administrative Office
825 Fifth Street, Room 112
Eureka, CA 95501-1153



**HOOPA VALLEY TRIBAL COUNCIL
HOOPA FIRE DEPARTMENT
AND
OFFICE OF EMERGENCY SERVICES**

P.O. Box 369
11121 Hwy 96
Hoopa CA. 95546
(530) 625-4366 Fax (530) 625-4416



ATTACHMENT I - Proposal Narrative

Humboldt County Citizens' Advisory Committee on *Measure Z* Expenditures,

The Hoopa Fire Department and Office Of Emergency Services is requesting *Measure Z* funds to increase rural fire protection capabilities for the Hoopa Valley Indian Reservation, within the Wildland Urban Interface. The Hoopa Indian Reservation is listed with Cal Fire in the 2001 federal register as a "community at risk" from wildfire. Since 2001 the current status of Hoopa has exacerbated from over growth of Himalayan Black Berries, Scotch Broom and Annual Grasses in excess of 6 ft tall, as well as additional fuel loading within the WUI as a result of sever storm damage. The Hoopa Indian Reservation is in critical need of Hazardous Fuels removal and places the community within the same arena as recent destructive Northern California fires such as: the Carr fire, Mendocino complex and Camp fire. Recent large wildfires on the Hoopa Valley Reservation include the Mill Creek 1 fire (2018), Bald Hill 3 (2013), with numerous smaller fires throughout the fire season that have shown the destructive potential that threatens the WUI here in Hoopa. The Hoopa Fire Department and OES (WUI) program strategically conducts projects that remove hazardous fuel vegetation around structures within the Hoopa Reservation Wildland Urban Interface Boundary. The program is in need of purchasing Equipment to help with Wildland Urban Interface (WUI) projects. The following equipment that has been identified, will aid in the production of defensible space on the Reservation: 5 mobile radios for communication, 10 handheld radios for personnel communication, 10 gear packs(PPE), 10 hard hats(PPE), a 1 ton flat-bed truck, a 12 inch woodchipper, and a masticator head attachment for our tracked skid steer unit.

The identification and removal of hazardous fuel, creates community wide protection from wildfire, in turn the creation of defensible space helps protect the residences and first responders from the effects of catastrophic wildfire. It is important to understand that wildfire protection for the homeowner and community not only comes from our emergency responders but also through defensible space. The Hoopa Fire Department and OES WUI program has identified the needed equipment listed above to accomplish defensible space projects that will help minimize the spread of catastrophic wildland fire, and maximize the protection to homes and the infrastructure of the Hoopa Valley Tribe. The fuel reduction will allow first responders and volunteer fire fighters the ability to protect community members with defendable structures, with easier access to structures, by providing safer holding features, safer access to homes, and all points of a structure. Large accumulations of fuel around homes left untreated will potentially become a catastrophic wildfire as devastating as the recent Camp Fire that swept through Paradise California. If the fuels are left as they are and defensible space isn't created and maintained then loss of life and property is a possibility for the Hoopa Valley Indian Reservation and the threat has been increasing exponentially year after year.

ATTACHMENT II
Budget
Hoopa Fire Department And Office Of Emergency Services

Invoice Date: 2/4/19

Invoice # MZ- _____

Invoice Period: _____

Descriptions	Amounts	Approved Budget	Remaining Balance
A. Personnel Costs			
Title: N/A Salary and Benefits Calculation: N/A			\$0.00
Total Personnel:	\$0.00	\$0.00	\$0.00
B. Operational Costs (Rent, Utilities, Phones, etc.)			
Title: N/A			
Description: N/A			
Total Operating Costs:	\$0.00	\$0.00	\$0.00
C. Consumables/Supplies (Supplies and Consumables should be separate)			
Title: N/A			
Description: N/A			
Total Consumable/Supplies:	\$0.00	\$0.00	\$0.00
D. Transportation/Travel (Local and Out-of-County should be separate)			
Title: N/A			
Description: N/A			
Total Transportation/Travel Costs:	\$0.00	\$0.00	\$0.00
E. Fixed Assets			
Title: MASTICATOR			
the rage forestry mulching Masticator attachent for tracked skid steer *			
Description: quote attached	\$21,287.00		
Title: CHIPPER			
Description: morbark 12" chipper* quote attached	\$63,333.73		
Title: GEAR			
Description: Mystery Ranch Personal Protective Gear Packs* quote attached	\$3,535.75		
Title: RADIOS			
5 Bendix King Mobile Radio Kits , 10 Bendix King Handheld Radio Kits			
Description: Essential For Communication* quote attached	\$40,546.25		
Title: Hardhats			
Description: Personal Protective Equipment, Hardhats Safety personnel* quote attac	\$589.50		
Title: Flatbed			
2018 FORD F550 Crew Cab Flat Bed Pick Up Truck For			
Transportation Of chipper, heavy equipment and additional items as			
Description: needed.* quote attached	\$66,735.00		
Title:			
Description:			
Total Other Costs:	\$196,027.23	\$0.00	\$0.00
Invoice Total:	\$196,027.23		

ATTACHMENT II - EXHIBIT F

Measure Z - Invoice

Hoopla Fire Department And Office Of Emergency Services
Rod Mendes, Chief of Fire And OES
PO BOX 369 HOOPA CA 95546
530-625-4366

Invoice Date: 2/4/2019

Invoice # MZ- _____

Invoice Period: _____

Description	Cost	Total Amount Due
Personnel Costs (Wages and Benefits)		
	\$0.00	
Operational Costs (Rent, Utilities, Phones, etc.)	\$0.00	
Consumables/Supplies (Supplies and Consumables should be separate)	\$0.00	
Transportation/Travel (Local and out of county should be separate)	\$0.00	
Other (Indirect Costs, Contracts, etc.)	\$196,027.23	
		\$196,027.23

I certify that the information provided above is, to the best of my knowledge, complete and accurate; the expenditures are in accordance with the approved Agreement cited for services provided under the provision of that agreement. Full justification and backup records for the expenditures are maintained in our office at the address indicated.

Signature and date: _____

2/6/19

Print Name and Title: _____

Rod Mendes, Chief of Fire and OES

Send invoice to:

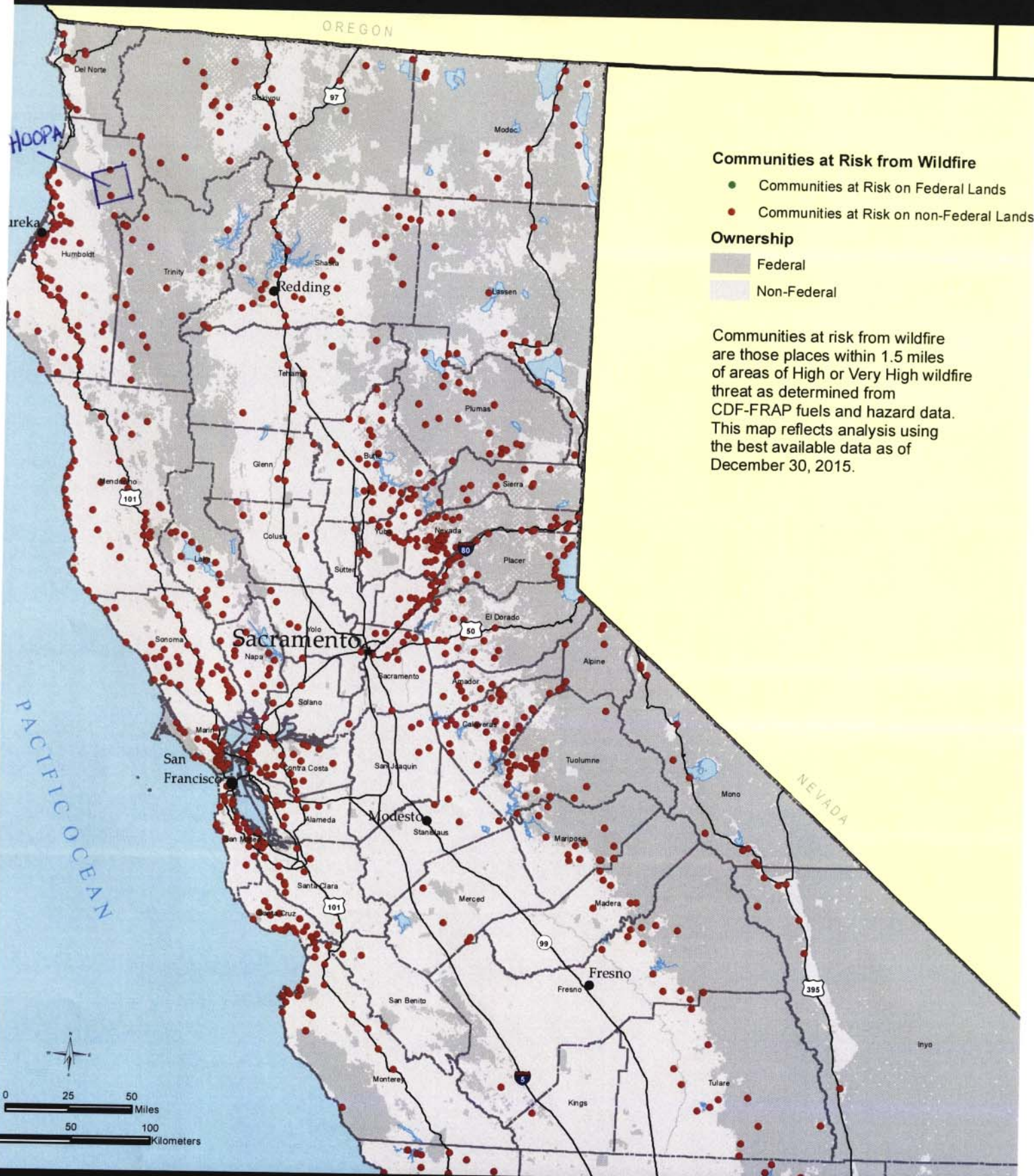
COUNTY OF HUMBOLDT

County Administrative Office
 825 Fifth Street, Room 112
 Eureka Ca 95501

_____
Date_____
Date

(707) 445-7266

NORTHERN CALIFORNIA COMMUNITIES AT RISK FROM WILDFIRE



The State of California and the Department of Forestry and Fire Protection make no representations, warranties regarding the accuracy of data or maps. Neither the State nor the Department shall be liable under any circumstances for any direct, special, incidental, or consequential damages with respect to any claim by any user or third party on account of, or arising from, the use of data or maps.

Obtain FRAP maps, data, metadata and publications on the internet at <http://frap.cdf.ca.gov>. For more information, contact CAL FIRE FRAP, PO Box 94246, Sacramento, CA 94244-2460. (916) 327-3939.

DATA SOURCES
comatrisk v15_2
ownership15_1

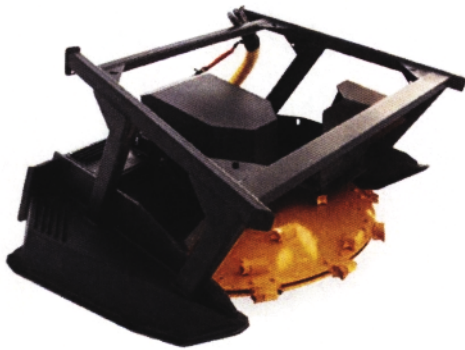
Jerry Brown, Governor, State of California
John Laird, Secretary for Resources, The Natural Resources Agency
Ken Pimlott, Director, Department of Forestry and Fire Protection

**866-428-8224**<https://www.quickattach.com>

The Rage™ - Forestry Mulching Mower

[Home / Return to Previous Page](#)

PRINT



Fixed Displacement Piston

1. Clean deck design reduces amount of debris buildup and is easy to clean off
2. Serrated steps ensure positive traction in the toughest conditions for safety
3. Motor cover completely encloses the motor and all hoses for maximum protection from being pulled or damaged
4. Parker bent axis piston motor
5. Floating front deflector directs mulched material downward towards the ground to improve safety
6. 2" X 4" Tubular steel push bar
7. Disc 1.5" thick which is the thickest in the industry to increase strength
8. Cutting teeth are built with a 4-sided rotational beaver tooth design that can be rotated as they wear
9. AR400 skid shoes are highly wear resistant and very strong

DOWNLOAD BROCHURE

Call now for factory Direct Pricing

866-428-8224

Customize Your Item

- Couplers -



* required

- Replacements -



PRICING: ***Login or Create Account to see price...***

CHECK PRICE



Description ▼

Specifications ▼

Brochure ▼

Details ▼

Reviews ▼

Customer Reviews

Total Reviews (0)

Write the First Review!

You must login to post a review.

Email



SALES QUOTE

Quote Number UNSAVED

Quote Date 01/28/19

PLEASE REMIT PAYMENT TO
CEG / QUICK ATTACH
PO BOX 860490
MINNEAPOLIS, MN

SOLD TO Hoopa Wild Lamd Fire
 , CA

SHIP TO Hoopa Wild Lamd Fire
 , CA

SHIP TO Mike Lee
PHONE 707-407-6338

PRODUCT SPECIALIST DENNIS FOLEY
SHIP VIA TRUCK
PO NUMBER
TERMS
E-MAIL: mikeleesr@yahoo.com

CONTACT NAME Mike Lee
PHONE NUMBER 707-407-6338
CELL PHONE 707-407-6338
LEAD SOURCE
EST SHIP DATE

Item	Qty	Description	MSRP	Buy Direct
901352	1	THE RAGE Forestry Mulching Mower (fixed displacement piston)	\$23,995.00	\$20,396.00
320226	1	Faster Factory Installed High Flow Couplers - 3/4 12MJ	\$295.00	\$251.00
Subtotal			\$24,290.00	\$20,647.00
Sales Tax			\$0.00	\$0.00
Shipping			\$0.00	\$640.00
Total			\$24,290.00	\$21,287.00

Please contact me if I can be of further assistance.

MORBARK® BEEVER™ M12R



BENEFITS

- With its power and easily transportable design, this compact and economical chipper is the ideal unit for utility line clearing, residential tree services, rental yards and municipalities.
- The dual-sided, chambered air impeller system increases chip-throwing velocity and reduces dust and material blowback out the infeed to pack more into the chip truck.
- The direct driven dual feed wheel system with serrated teeth and knife bar combination and end cap ripper teeth allow positive material feeding and reduced material wrapping around the feed wheel shaft for increased feeding efficiency.
- Like all Morbark equipment, the M12R is a long-lasting, durable machine backed by a world-class parts and service support team.



Infeed Opening

The 60" wide x 31" high chute opening and 15" wide x 14" high throat opening allows for easy feeding of branchy material and reduced saw labor.



Drive Belt Cover

Drive belt inspection cover provides easy access for drive system maintenance.



Hydra-Lift System

The powerful Hydra-Lift™ dual feed wheel compression system with spring-assisted down pressure generates more than 3,300 lb./ft. of combined material pulling force.



360° Swivel Discharge

360° swivel discharge with chip deflectors puts chips right where they're needed without removing the Beaver from the tow vehicle.

SPECIFICATIONS

SPECIFICATIONS MAY VARY WITH EQUIPMENT OPTIONS 2/13/18

General

Chipping capacity. 12"
Height 8'5"
Width 5'11"
Length 15'5"
Gross weight (approximate) 5,500 lbs.
Suspension 6,000 lb. Torflex
Infeed opening 60" wide x 31" high
Throat opening 15" wide x 14" high
Drum 14 1/2" wide x 21 3/8" diameter
Engine CAT, GM, or Perkins
Horsepower 49-145 HP
Fuel capacity 24 1/2 gallons
Hydraulic capacity 17 gallons
Frame 8.2 lb., 6" channel
Tires (2) 235/80R16"
Hitch 2 1/2" Pintle Ring

Equipment Highlights

14 1/2" wide x 21 3/8" diameter staggered-knife-pocket drum with two dual-edged chipper knives and dual-sided chambered air impeller system
Top and bottom horizontal feed wheels equipped with serrated teeth and knife bars
Reversing automatic feed system
Enclosed engine with gauge panel, radiator fines screen and slide rails for belt adjustment
Fuel tank sight gauge, drain plug and shut-off valve
Hydraulic tank shut-off valve, drain plug and clean-out cover
Live hydraulics; ball valve, pump, motor and control valve
3" x 5" tubular steel telescoping drawbar with two 12" extensions

Additional Features

Morthane Paint System: A chemically cured, electrostatically applied urethane coating with high-gloss finish, built-in UV protection, chip and chemical resistance and corrosion protection

Options Include

ChipSafe® Operator Safety Shield
Folding infeed tray
Winch package: heavy-duty, 5,000 lb. pull capacity with rope and 10' chafe guard
Custom paint and logo packages
Bottom Bump Bar
Hydraulic Swivel Discharge
Cone Holder
Flow Control
Axle Options Available
Fender Options Available
Battery Box Options Available



MORBARK®
BUILDING EQUIPMENT THAT CREATES OPPORTUNITIES

800.831.0042
989.866.2381
www.morbark.com

PO Box 1000
8507 S. Winn Rd.
Winn, MI 48896



MORBARK *Bailey's*

Bailey's Inc
1210 Commerce Ave, Suite 8
Woodland, Calif, 95776
www.morbark.com

Bailey's Inc
8108 River Drive, #107
Olympia, Wa, 98501



Quote For: Hoopa Wild Land Fire Dept

Ship To:

Quote No. _____ Quote Date: 1/25/2019 Customer P.O. _____ Requested: _____

Contact: Mike Lee Contact #: _____ Delivery Instructions: _____

Preparer: Jim Haas Terms: TBA

2019 MORBARK EEEER BEEVER™ 1415 (formerly known as M12R)

EQUIPMENT AND OPTIONS

STANDARD UNIT:

- ◆ Morbark orange urethane paint system
- ◆ Infeed with rigid tray and control handle to actuate feed wheels and dual safety pull cables
- ◆ Dual horizontal feed wheel compression system with hydraulic lift assist, spring assisted down pressure and manually applied hydraulic down pressure at the valve handle
- ◆ Reversing automatic feed system
- ◆ 21-3/8" diameter x 14-1/2" wide staggered knife pocket drum with two (2) dual-edged chipper knives and dual sided chambered air impeller system
- ◆ 24-1/2-gallon lockable fuel tank with drain plug, sight gauge and shut-off valve
- ◆ 17-gallon lockable hydraulic reservoir with sight gauge, drain plug and clean-out cover
- ◆ Live hydraulics; ball valve, pump, motor and control valve
- ◆ Manual crank swivel discharge chute with 360° rotation, turnbuckle height adjustment, bottom clean-out door and adjustable flipper
- ◆ 8.2#, 6" channel frame rails with cross bracing for additional structural rigidity
- ◆ 5" x 3" tubular steel telescoping drawbar with (2) 12" extensions, adjustable hitch plate with 2-1/2" pintle ring and 3/8" thick safety chains with clasp hooks
- ◆ 7,000# Torflex axle, electric brakes, break-away actuator with 235/80R x 16" radial tires and hexagon splash guard fenders
- ◆ 5000# side wind tongue jack with stationary foot pad
- ◆ Lockable steel battery box with 8D, 1400CCA battery and steel tool box
- ◆ Registration and operator guide holder
- ◆ Complete set of manuals including: Safety and Operator's, Parts Manual with electronic back-up, which also includes a Safety Video and OEM component manuals. Also included is an engine manual if applicable along with start-up
- ◆ Enclosed engine with gauge panel, radiator fines screen and slide rails for belt adjustment
- ◆ Trailer wiring package includes: 7-pin flat electrical connector, LED tail lamps, LED side marker lamps, tail lights and license plate holder with light



POWER OPTION:

- ◆ Caterpillar C3.4, Tier 4F, 122.5-HP diesel engine



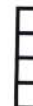
Bolt on Options

- ◆ 2" ball hitch in lieu of standard 2-1/2" pintle ring
- ◆ 2-5/16" ball towing hitch in lieu of standard 2-1/2" pintle ring
- ◆ Amber strobe light
- ◆ ChipSafe® Operators Safety Shield includes (2) sets of wrist straps, (2) sets of ankle straps & (2) sets of boot straps

NOTE: Not available with the variable speed flow control

NOTE: If the ChipSafe® option has not been selected, it can be installed later.

- ◆ Chocks and chock holders (complete set of 2)
- ◆ Cone holder, lockable to hold (10) 28" long traffic cones
- ◆ Dual feed stops on infeed
- ◆ Electronic fuel gauge located near control panel
- ◆ Engine stop on infeed
- ◆ Folding infeed tray with spring lift assist
- ◆ Manuals - complete, additional set
- ◆ Pusher paddle with mount
- ◆ Rubber infeed curtain
- ◆ Spare 235/80R x 16" tire and rim
- ◆ Spare tire mount



- ♣ Turnbuckle for discharge height adjustment
- ♣ Variable speed flow control
- ♣ Winch package: heavy-duty, 5000# pull capacity with rope and 10' chafe guard

Custom Options (60 - 90 days)

- ♣ Special color paint, in lieu of standard Morbark orange

Morbark is not responsible for final color or shading

Delivered Hoopa, Ca

Comments:

TOTAL CALCULATION

Quantity Requested: 1

Total from Above Choices =	\$64,450.00
Discount =	5.0%
Municipal Discount =	4.0%
Tax Applied =	7.75%
SE/Exempt License =	\$125.00
Down Payment =	\$0.00
Extended Price =	\$63,333.73

QUOTE IS VALID FOR 30 DAYS

Bailey's

Jim Haas

Industrial Sales Manager @ Bailey's

Factory Authorized Dealer for:

Morbark/Rayco/Boxer/Rotobec/Lucas Mill/Logosol/Avant/Teupen/

Wravor Sawmill Equipment /WTM Vaglio Vacuum Kilns/

AM Machine Log Trailers, AFM Harvesting Heads, LASCO Log Splitter

Neuson Forest Harvesters

Locations in N. California, Washington and N. Oregon

Phone: 1-800-322-4539 Ext 227

Cell: 1-530-908-2466

Fax: 530-406-0895

jhaas@baileysonline.com

www.baileysonline.com

--California Location--

1222 Commerce Ave. Suite D
Woodland, CA 95776

--Washington Location--

8108 River Drive #107
Olympia, Wa, 98501



[Retailers](#) | [Login/Register](#) | [Contact Us](#) | [10](#)
(/hotshot-tl-top-load-nfpa-ul-certified-cal-fire-spec-approved-wildland-fire-handcrew-line-pack?
color=Black&size=XL&model=CAL%20Fire%20Spec%20
Hotshot TL (/hotshot-tl- (Reservoir%20Included))
top-load-nfpa-ul-certified-
cal-fire-spec-approved-
wildland-fire-handcrew-
line-pack?
color=Black&size=XL&model=CAL%
20Fire%20Spec%20
(Reservoir%20Included))

\$315.00

Color: ■ BLACK

Size: XL

Model: CAL Fire Spec

(Reservoir Included)

Quantity: 10

[VIEW CART](#)

[CHECKOUT](#)

[SHOP \(/SEARCH\)](#) | [THE RANCH \(/MYSTERY-RANCH-HISTORY\)](#)



(/)

Shopping Cart

1 Product, 10 Items



(/hotshot-tl-top-load-nfpa-ul-certified-cal-fire-spec-approved-wildland-fire-handcrew-line-pack?
color=Black&size=XL&model=CAL%
20Fire%
20Spec%20
(Reservoir%
20Included))

Hotshot TL
(/hotshot-tl-top-load-nfpa-ul-certified-cal-fire-spec-approved-wildland-fire-handcrew-line-pack?
color=Black&size=XL&model=CAL%
20Fire%20Spec%20
(Reservoir%
20Included))

Color: ■ BLACK
Size: XL
Model: CAL Fire Spec
(Reservoir Included)

\$315.00

Quantity: 10

Amount: \$3,150.00

[EDIT \(/HOTSHOT-TL-TOP-LOAD-NFPA-UL-CERTIFIED-CAL-FIRE-SPEC-APPROVED-WILDLAND-FIRE-HANDCREW-LINE-PACK?\)](#)

[SAVE FOR LATER](#)

[REMOVE](#)

ORDER SUMMARY

SUBTOTAL

10 ITEMS **\$3,150.00**

SHIPPING

95546 ✕

2 Day **\$267.50**

3 Day **\$200.63**

Overnight **\$668.75**

Standard **\$133.75**

USPS Priority Mail® **\$63.00**

You will be able to choose the desired Shipping Method in Checkout

TAX \$252.00

ESTIMATED TOTAL \$3,535.75

Tax Exemption



Federal Government/ Tribal Tax Exempt:

Please call customer service at 833.548.1999 for order processing.

Promo Code



[PROCEED TO CHECKOUT](#)

RECENTLY VIEWED

Toll Free: 800-552-0707



BENDIX KING » HARRIS » HYT » MIDLAND » BIG BOOST ANTENNA'S MINER MICS
TAIT VERTEX STANDARD ACCESSORIES » SKYPROBES BADASS BATTERIES



SEARCH

Search
Advanced search

CATEGORIES

BENDIX KING »
HARRIS »
HYT »
MIDLAND »
BIG BOOST ANTENNA'S
MINER MICS
TAIT
VERTEX STANDARD
ACCESSORIES »
SKYPROBES
BADASS BATTERIES

GOV LOGIN**REPAIRS****BK PARTS****LINE CARD****Your Cart****Checkout**

Description	Price	Quantity	Total
 <u>Grab N Go Forest Service Package</u> Product ID: Wildland Fire USFS KNG Radio Package Weight : 3.00 lbs * Remove	\$2,750.00	<input type="text" value="10"/>	\$27,500.00
 <u>Bendix King DMH Dash Mount Mobile Radio Bundle</u> Product ID: BUDMHMORD Weight : 10.00 lbs * Remove	\$2,609.25	<input type="text" value="5"/>	\$13,046.25
<div>Continue Shopping Enter Email <input type="text"/> Update</div>			

Subtotal Amount: **\$40,546.25**Enter Promo Code [Apply](#)**Checkout**

Q
[LOGIN \(/ACCOUNT\)](#)


MY ACCOUNT (/ACCOUNT/REGISTER)

 (/CART)



INDUSTRY LEADING
 INNOVATIVE SOLUTIONS Q

Toll Free Sales: 1-888-577-4526

Q  (/account/logir)

(/)

[Home \(/\)](#)

[All Categories](#) v

[New](#) v


[Clearance](#) v

[Contact \(/pages/contact\)](#)



SEARCH OUR SITE

Your cart

Product	Price	Quantity	Total
 (/collections/all/products/helmet-full-brim-w-ratchet-suspension-fh911-bullard?variant=18224927604825)	Helmet -Full Brim w/ Ratchet Suspension, (FH911), Bullard (x10) (/products/helmet-full-brim-w-ratchet-suspension-fh911-bullard?variant=18224927604825) <i>Title: BLACK</i>	\$58.95 EDIT 10 UPDATE	\$589.50

REMOVE (/CART/CHANGE?
 LINE=1&QUANTITY=0)

REMOVE
 (/CART/CHANGE?
 LINE=1&QUANTITY=0)

Subtotal **\$589.50**

Shipping & taxes calculated at checkout

[CONTINUE SHOPPING \(COLLECTIONS/ALL\)](#)

[UPDATE](#)

[CHECK OUT](#)





Take that money \$aving short drive to Corning
Corning Ford: (530) 838-4619
2280 Short Drive, Corning, CA 96021

2018 F-550 Crew Cab DRW 4x4, Scelzi WFB Flatbed (Stock #53970)



Photos may be library images.



Photos may be library images.

Chassis Details

Stock Number	53970
Stock Type	N
Year	2018
Make	Ford
Model	F-550
Drive Train	4x4
Cab Type	Crew
Interior Color	STEEL VINYL
Exterior Color Description	OXFORD WHITE CC
Engine Cylinder Count	8
Transmission Type	A
Rear Wheels	Dual
Fuel Type	Diesel

Body Details

Manufacturer	
Body Type	Flatbed
Body Line	WFB
Body Model	W 8/14
Body Length	14'
Body Width	8'
Floor Type	7/8" Aluminum Floor
Headboard	Perforated Headboard 10 Gauge Smooth Steel 50/50 Non-Contoured with 3" Channel Uprights and Radius Corners
Exterior Lights	LED Seal Beam Clearance Lights and OEM Taillights
Rear Bumper	ICC Dock Bumper
Structural Crossmembers	Crossmembers on 16" Centers - Rope Hooks on Each Crossmember

Price **\$66,735**

Contact Corning Ford for more info.

Phone Number 1-530-838-4619

Vehicle available NOW in Corning, CA

Hitch Type	Class V Receiver Hitch without Insert
Stake Pockets	A.J. Baer Stake Pockets
Trailer Plug	7 Prong RV Trailer Plug

WFB Features

Western style flatbed - with a "squared" ICC Dock Bumper in back. Standard flooring options are hardwood and steel (smooth).

- Standard body is painted white, but black is also an option. Custom colors available for an additional charge.
- Three point latching system on all compartment doors
- Gas shocks on open top compartments and vertical doors
- Toolbox options include (a) Underbody tool box or (b) Top mounted tool box with OPEN top or CLOSED top

Disclaimer: Prices do not include government fees and taxes, any finance charges, any dealer document processing charge, any electronic filing charge and any emission testing charge.