



Public Works Department

Thomas K. Mattson, Director





Public Works Department

Thomas K. Mattson, Director

The Public Works Department has 7 Divisions:

- **Aviation Division**
- **Engineering Division**
- **Facilities Management Division**
- **General Services Division**
- **Land Use Division**
- **Environmental Services Division**
- **Road & Equipment Maintenance Division**

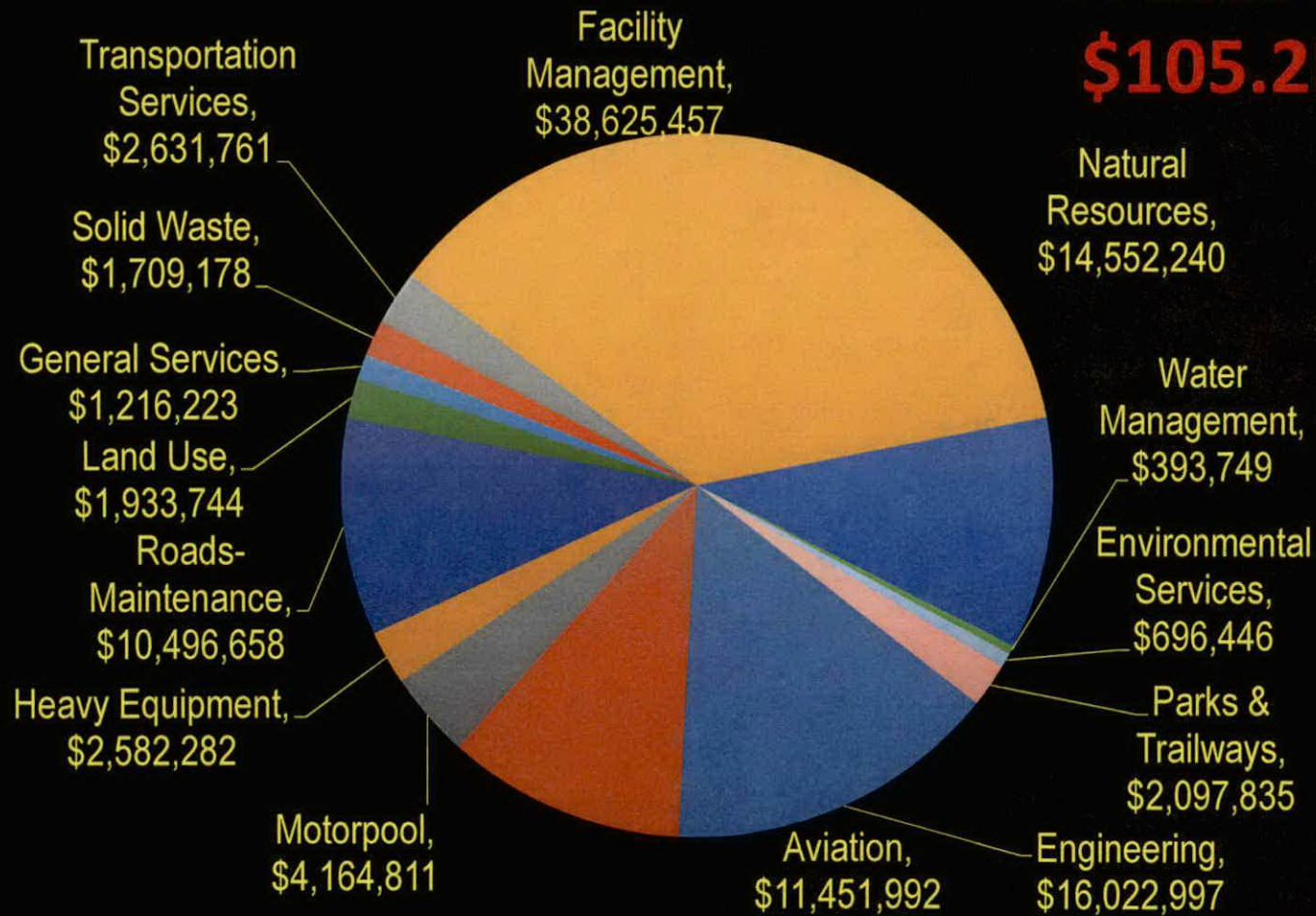


Public Works Department

Thomas K. Mattson, Director

FY 2018-19

\$105.2M

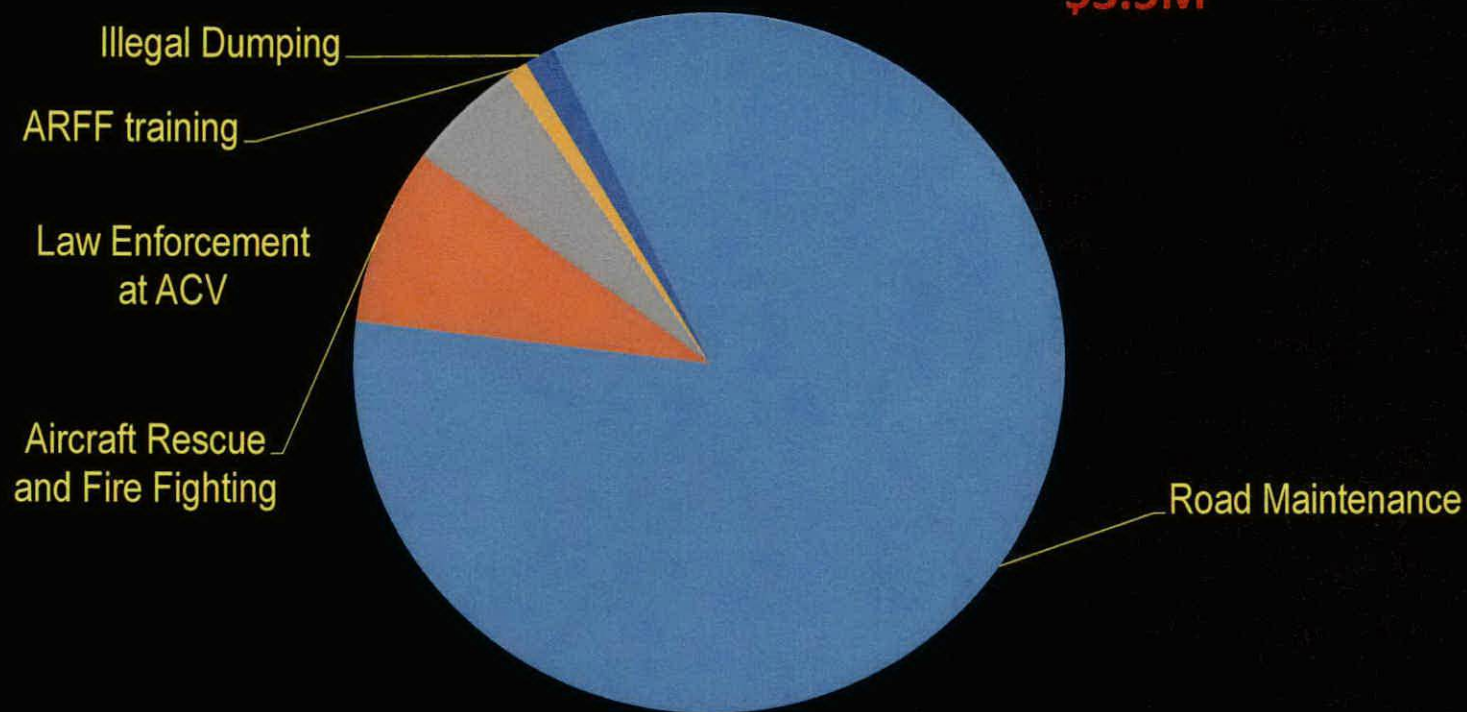




Public Works Department

Thomas K. Mattson, Director

Measure Z - Public Works
FY 2018-19
\$3.5M





Public Works Department

Thomas K. Mattson, Director

Supplemental Funding Requests:

- 1. Water Management Klamath Trinity Eel Rivers.... \$60,750**
- 2. Land Use Administrative Secretary..... \$72,787**
- 3. Facilities Building Maintenance..... \$100,000**
- 4. Facilities Carpenter and Vehicle..... \$60,000**
- 5. Facilities Laborer..... \$27,150**
- 6. Natural Resources Sustainability.....\$20,000**
- 7. Parks Asbestos Mold Abatement.....\$15,000**



Public Works Department

Thomas K. Mattson, Director

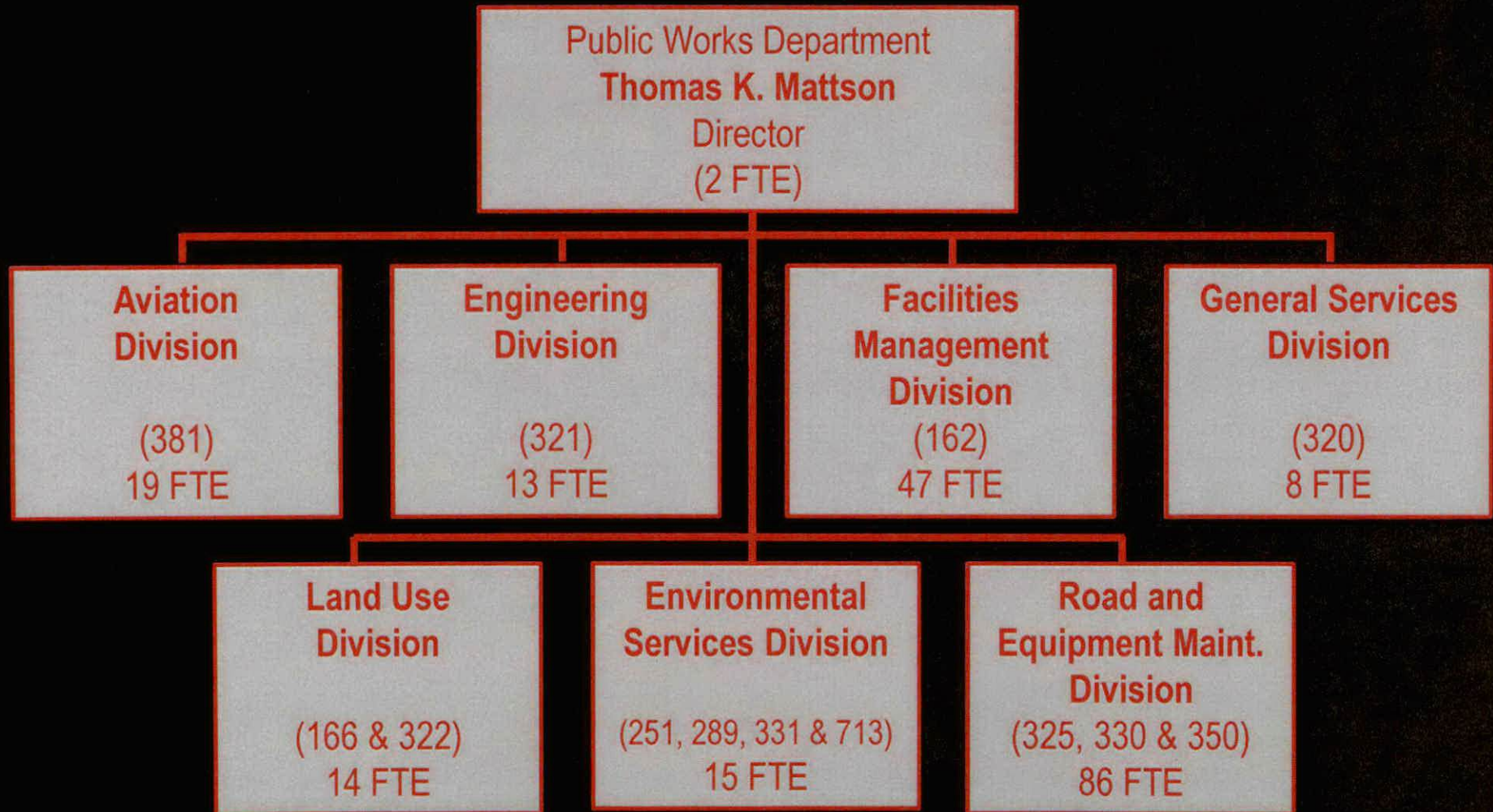
8. Aviation Security Services.....	\$188,000(Z)
9. Aircraft Rescue and Fire Fighting.....	\$291,000(Z)
10. Road Maintenance.....	\$3,000,000(Z)
11. ARFF Training.....	\$35,000(Z)
12. Illegal Dumping.....	\$50,000(Z)
TOTAL	\$3.9M



Public Works Department

Thomas K. Mattson, Director

2018/19 Department Organizational Chart



204 FTEs



Public Works Department

Aviation Division

Aviation Division

Engineering Division

Environmental Services Division

Facilities Management Division

General Services Division

Land Use Division

Road & Equipment Maint. Division





Public Works Department

Aviation Division

#1

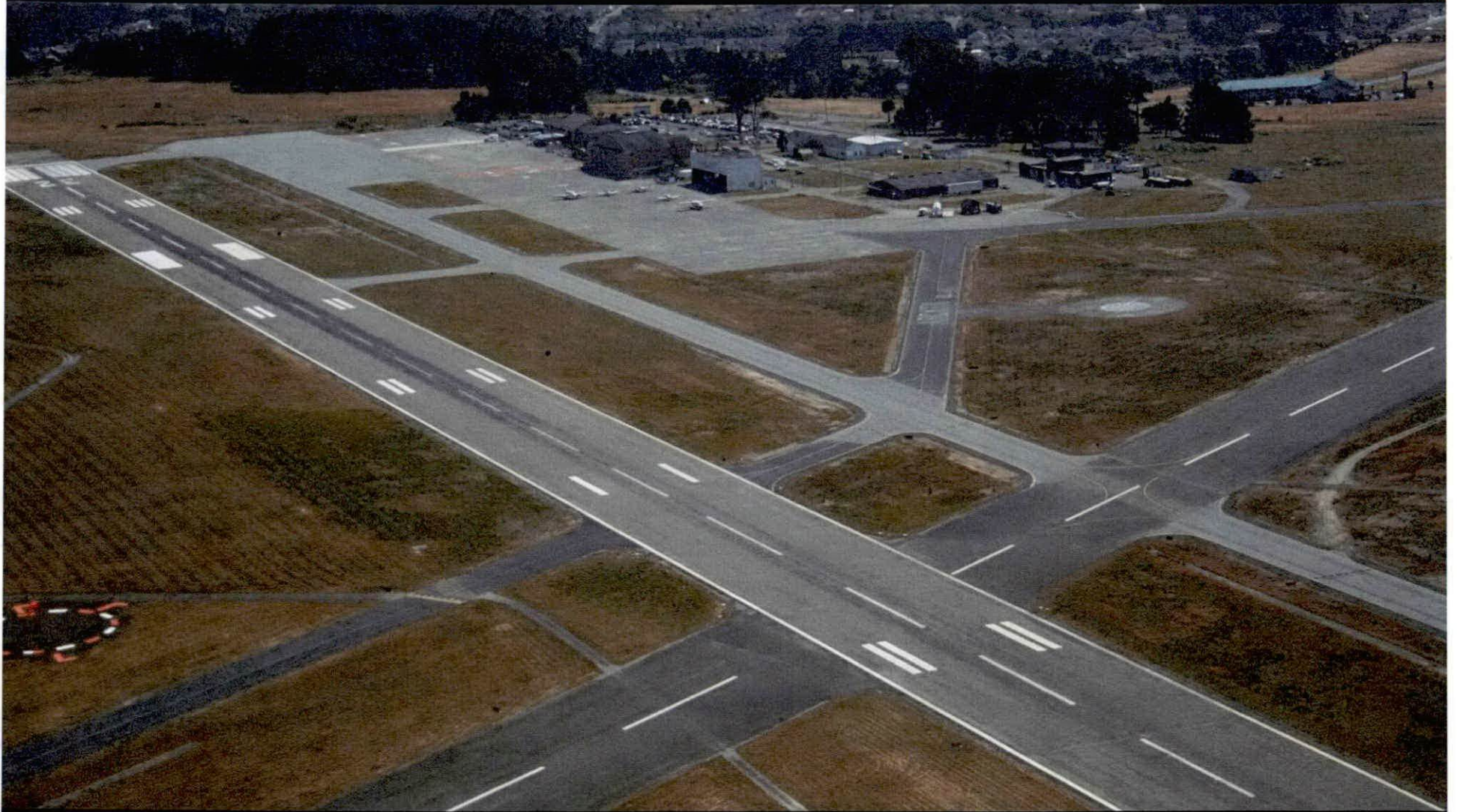
Division Priority for 2018/19

Increase Net Revenue



Public Works Department

Aviation Division



California Redwood Coast Humboldt County Airport



Public Works Department

Aviation Division



Dinsmore Airport



Public Works Department

Aviation Division



Garberville Airport



Public Works Department

Aviation Division



Kneeland Airport



Public Works Department

Aviation Division



Murray Field



Public Works Department

Aviation Division



Rohnerville Airport



Public Works Department

Aviation Division

2018/2019 Federally Funded Projects

- **Construct New Aircraft Rescue Fire Fighting (ARFF) Building at California Redwood Coast-Humboldt County Airport (ACV)**
- **Update Airport Layout Plans for ACV and Murray Field Airport (EKA)**
- **Complete Obstruction Survey and Removal Plans for ACV, EKA, and Garberville Airport (O16)**
- **Complete Runway and Taxiway Rehabilitation at Garberville**



Public Works Department

Engineering Division

Aviation Division

Engineering Division

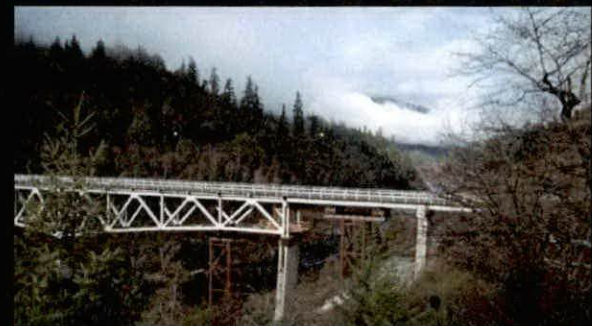
Environmental Services Division

Facilities Management Division

General Services Division

Land Use Division

Road & Equipment Maint. Division





Public Works Department

Engineering Division

#1

Division Priority for 2018/19

**Storm Damage Approval and
ADA Curb Ramps**



Public Works Department

Engineering Division



Shelter Cove Road Slip Out



Public Works Department

Engineering Division



Brookwood Bridge Rehabilitation



Public Works Department

Engineering Division



2017. 6. 12 9:44

Storm Damage



Public Works Department

Environmental Services Division

Aviation Division

Engineering Division

Environmental Services Division

Facilities Management Division

General Services Division

Land Use Division

Road & Equipment Maint. Division





Public Works Department

Environmental Services Division

#1

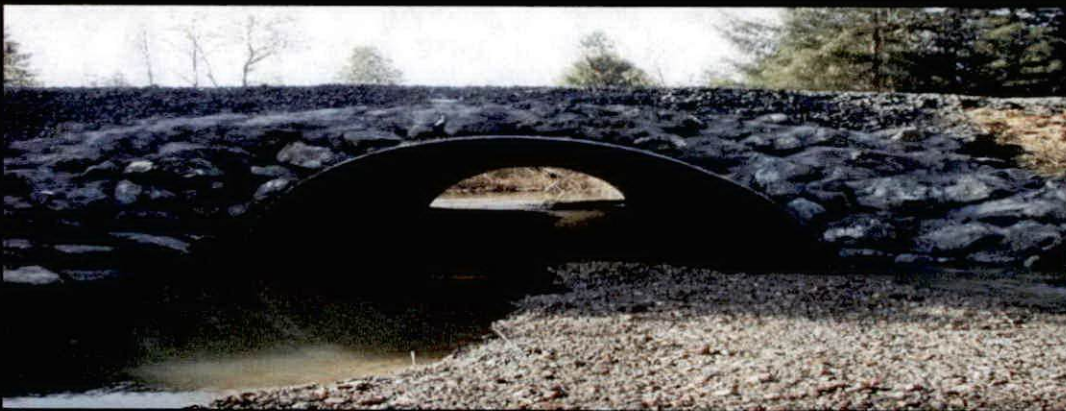
Division Priority for 2018/19

Maintain park services



Public Works Department

Environmental Services Division



Environmental Permitting/Compliance



Public Works Department

Environmental Services Division



NORTH COAST RESOURCE PARTNERSHIP



**Grant Administrator –
North Coast Resource
Partnership**



Humboldt County Fire Safe Council

- A committee appointed by your Board to oversee the maintenance and implementation of the County's fire plan and inform and make recommendation to your Board.



**Leadership and
Coordination of Hazard
Planning**



Public Works Department

Environmental Services Division

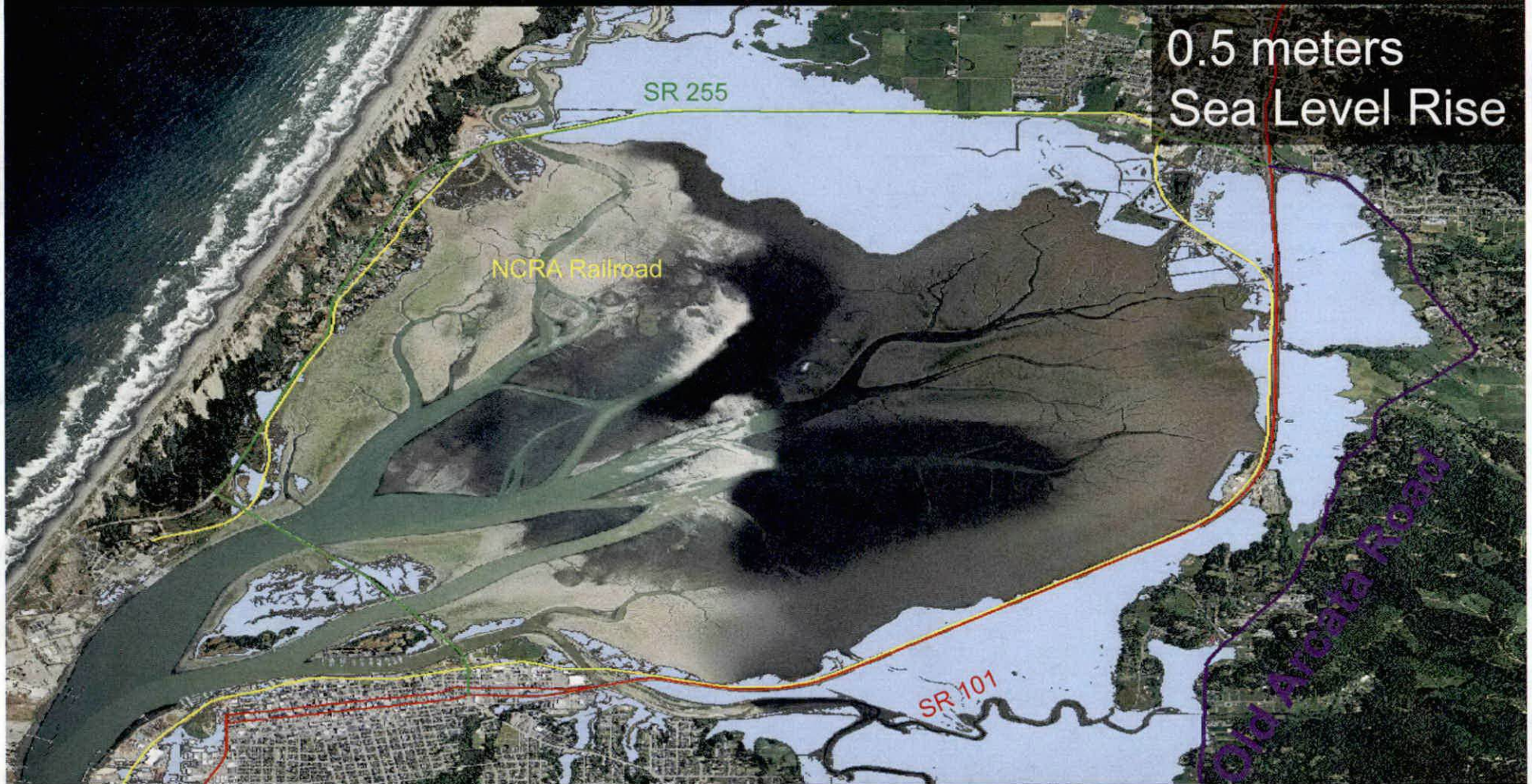


Levee Operation and Maintenance: Mad River (Blue Lake)



Public Works Department

Environmental Services Division



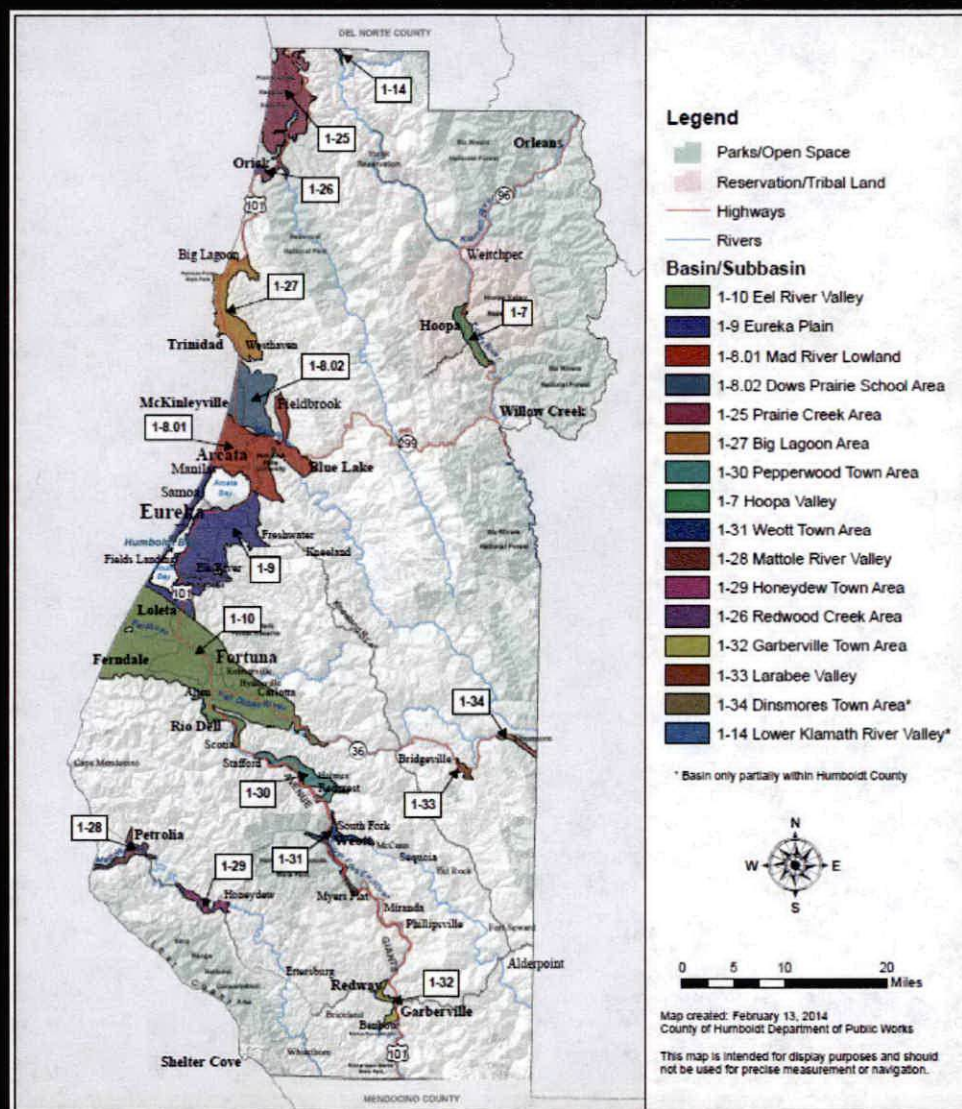
Water Resource Studies and Planning
Humboldt Bay Sea Level Rise



Public Works Department

Environmental Services Division

The Sustainable Groundwater Management Act
Effective January 1, 2015



Groundwater Sustainability Planning - Eel River Valley

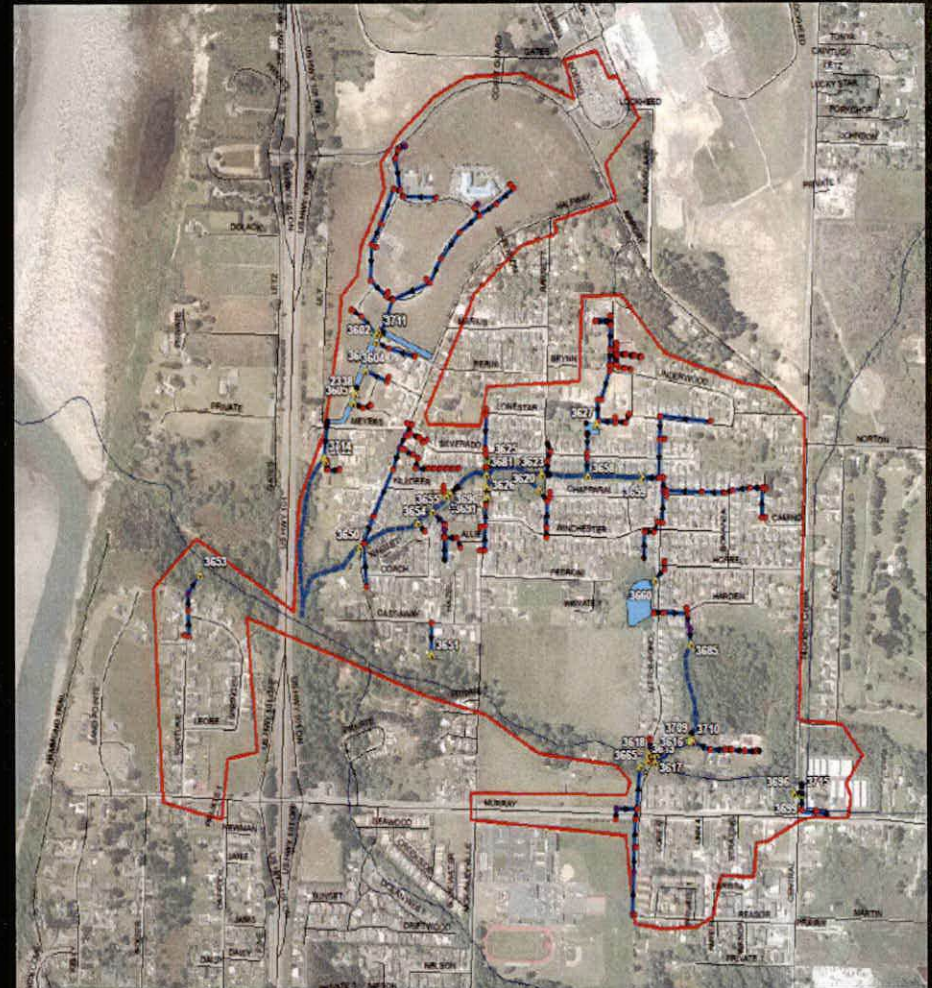
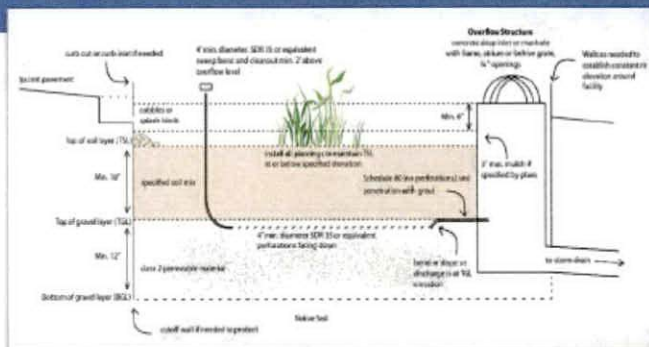


Public Works Department

Environmental Services Division



Humboldt Low Impact Development Stormwater Manual

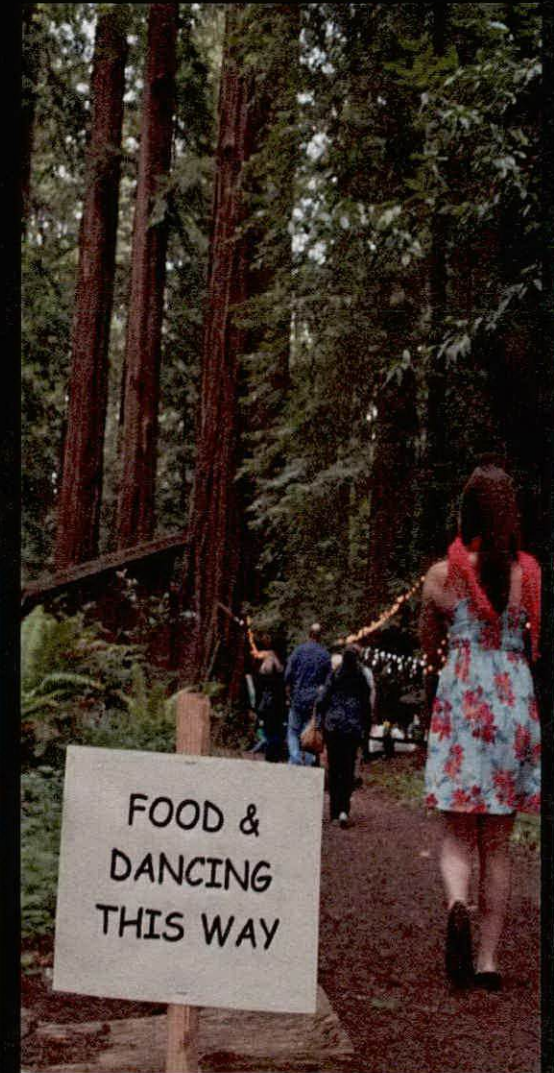


**Municipal Stormwater Programs – McKinleyville,
Unincorporated Eureka Area, Shelter Cove**



Public Works Department

Environmental Services Division



16 County Parks



Public Works Department

Environmental Services Division



Hammond Trail



Public Works Department

Environmental Services Division



McKay Community Forest



Public Works Department

Environmental Services Division

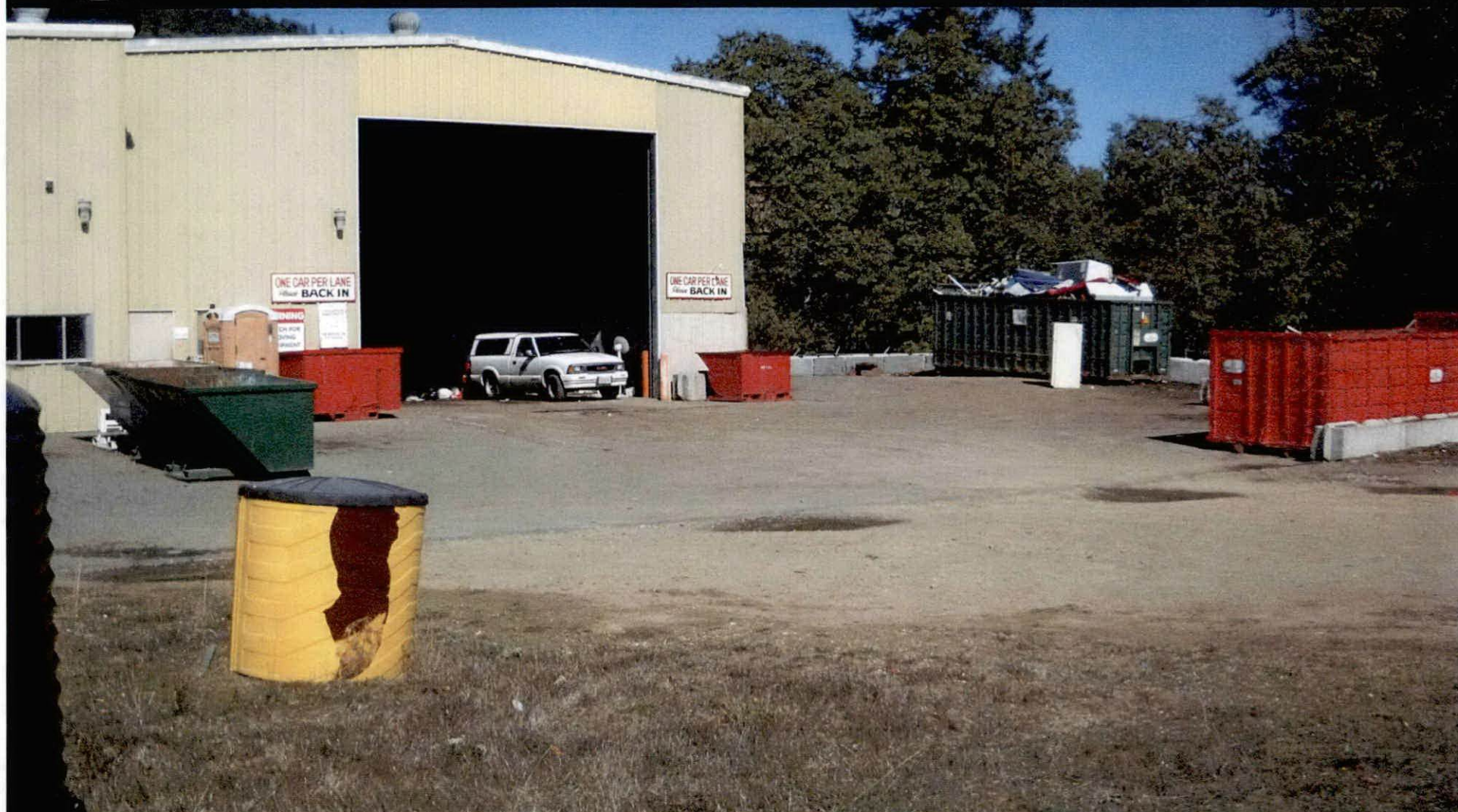


Project Development for Humboldt Bay Trail



Public Works Department

Environmental Services Division



Redway Transfer Station



Public Works Department

Facilities Management Division

Aviation Division

Engineering Division

Environmental Services Division

Facilities Management Division

General Services Division

Land Use Division

Road & Equipment Maint. Division





Public Works Department

Facilities Management Division

#1

Division Priority for 2018/19

Level of Staffing



Public Works Department

Facilities Management Division



Aging Infrastructure: Structural Damage



Public Works Department

Facilities Management Division



Aging Infrastructure: Leaking Conduit at the Courthouse



Public Works Department

Facilities Management Division



County Owned Site: Public Defender



Public Works Department

Facilities Management Division

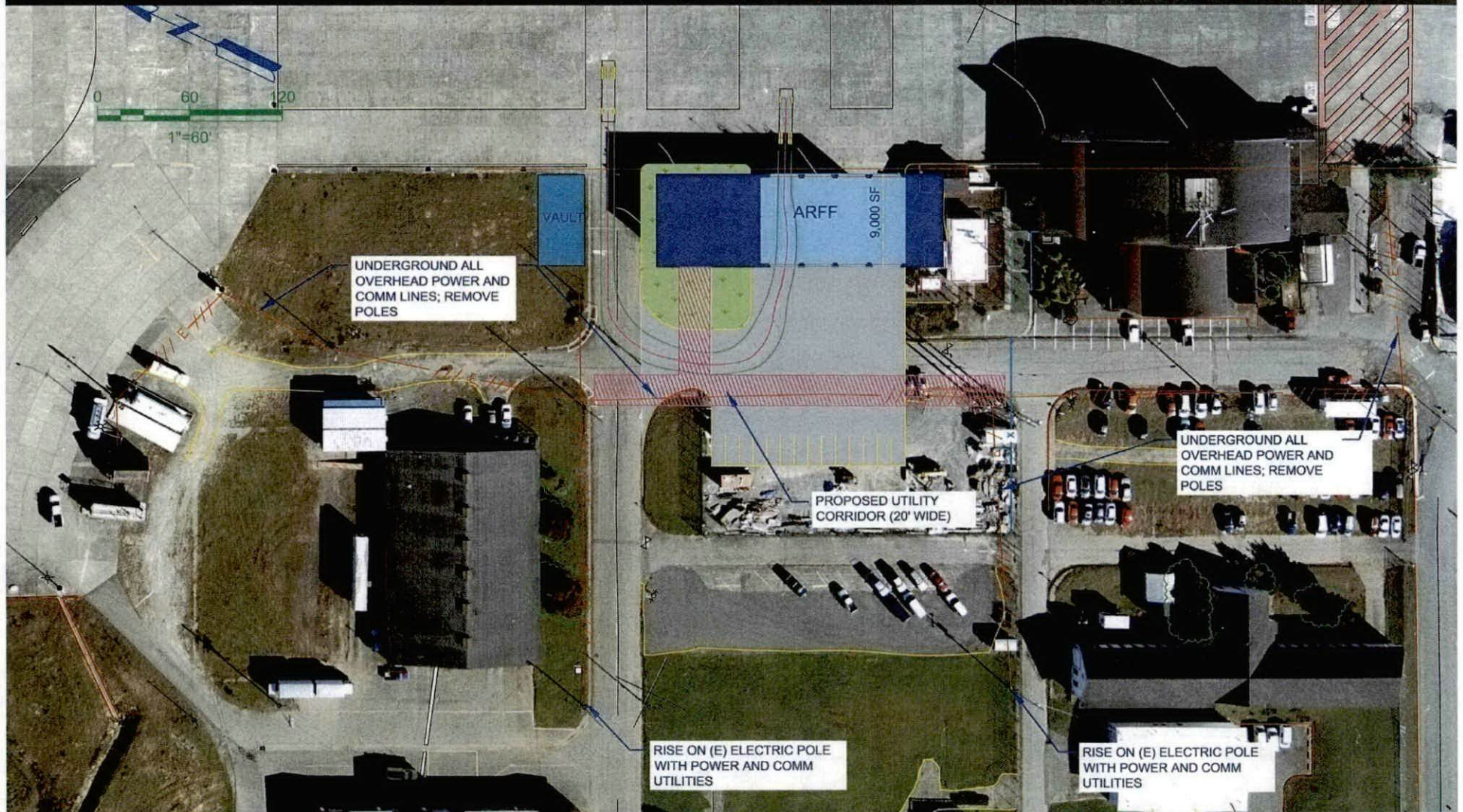


Capital Projects: Eureka Veterans Building Seismic Repair



Public Works Department

Facilities Management Division



Capital Projects: Arcata-Eureka Airport fire hall (ARFF) site



Public Works Department

General Services Division

Aviation Division

Engineering Division

Environmental Services Division

Facilities Management Division

General Services Division

Land Use Division

Road & Equipment Maint. Division





Public Works Department

General Services Division

#1

Division Priority for 2018/19

Level of Administrative Support



Public Works Department

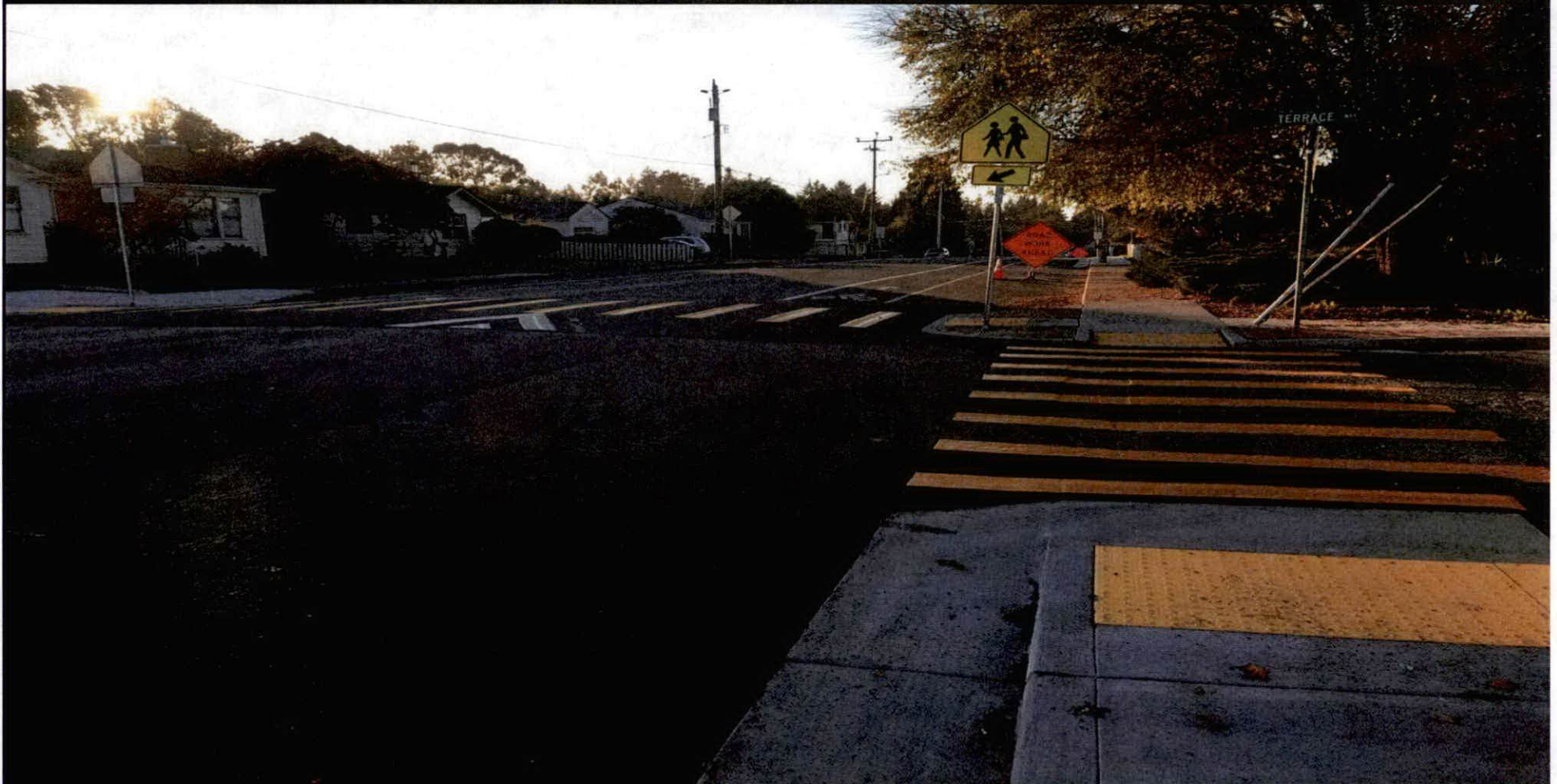
General Services Division



Collection Services – Solid Waste, Green Waste, & Recycling



Public Works Department General Services Division



**Project Finance and Accounting
(Safe Route to school)**



Public Works Department

General Services Division



Transit



Public Works Department General Services Division



Fuel cards



Public Works Department

Land Use Division

Aviation Division

Engineering Division

Environmental Services Division

Facilities Management Division

General Services Division

Land Use Division

Road & Equipment Maint. Division





Public Works Department

Land Use Division

#1

Division Priority for 2018/19

Cannabis Projects



Public Works Department

Land Use Division



Underground Utility Districts



Public Works Department

Land Use Division



Transportation & Special Event Permits



Public Works Department

Land Use Division

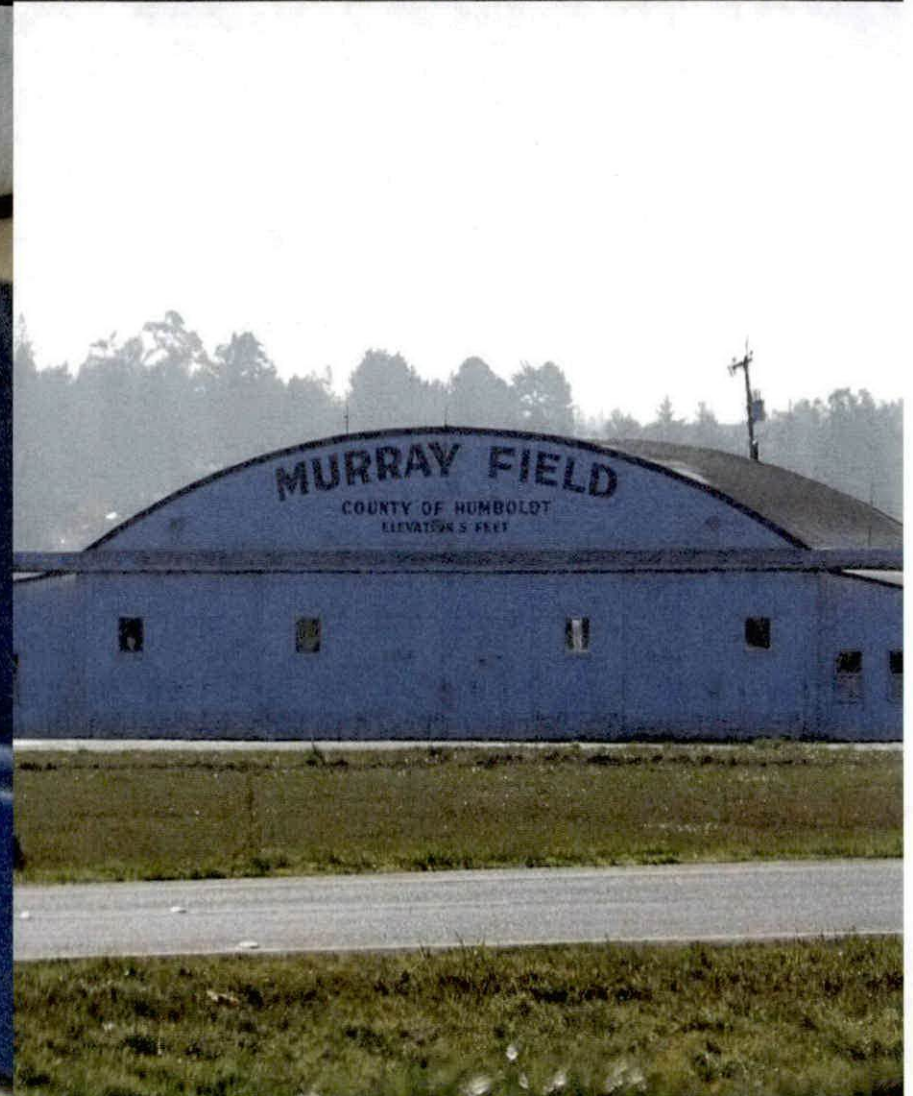
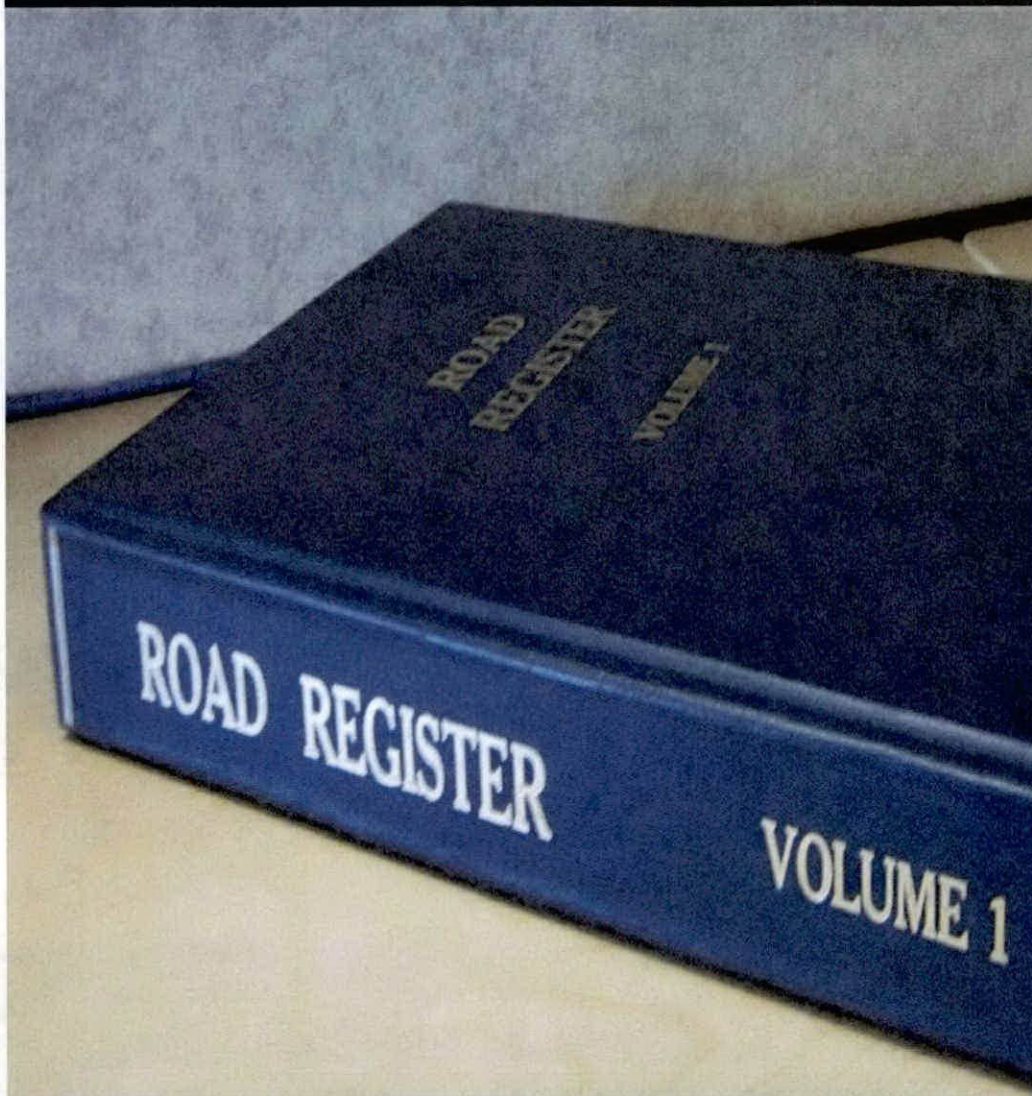


Cannabis Permitting



Public Works Department

Land Use Division



Right of Way & Real Property Management



Public Works Department

Land Use Division



Survey Crew on Red Cap Road





Public Works Department

Road & Equipment Maintenance Division

Aviation Division

Engineering Division

Facilities Management Division

General Services Division

Land Use Division

Environmental Services Division

Road & Equipment Maint. Division





Public Works Department

Road & Equipment Maintenance Division

#1

Division Priority for 2018/19

**Anticipation and Planning for Recall of
SB1 Funding**

Replacing Out Dated Equipment



Public Works Department

Road & Equipment Maintenance Division



Road Maintenance



Public Works Department

Road & Equipment Maintenance Division



Chip Seal



Public Works Department

Road & Equipment Maintenance Division



Slurry Seal



Public Works Department

Road & Equipment Maintenance Division



Rock Crushing



Public Works Department

Road & Equipment Maintenance Division



Repairing Road Failure



Public Works Department

Road & Equipment Maintenance Division



Storm Damage / Road Clearing



Public Works Department

Road & Equipment Maintenance Division



Emergency Road Opening



Public Works Department

Road & Equipment Maintenance Division



Heavy Equipment Shop



Public Works Department

Thomas K. Mattson, Director

