



AGENDA ITEM NO.

C-16

COUNTY OF HUMBOLDT

For the meeting of: June 13, 2017

Date: May 23, 2017

To: Board of Supervisors

From: John H. Ford, Director Planning and Building 

Subject: Resolution Authorizing the Submittal of a California Coastal Commission Grant to support the ongoing update of the Humboldt Bay Area Plan

RECOMMENDATION(S):

That the Board of Supervisors adopts the attached Resolution No. 1750:

- a. Authorizing the submission of an application for a \$100,000 California Coastal Commission (CCC) for a Local Coastal Program (LCP) planning grant to continue the update of the Humboldt Bay Area Plan, which was started with the 2014 LCP Grant.
- b. Authorizing the Director of Planning and Building Department to execute all necessary applications, contracts and agreements and amendments thereto, in the name of the County of Humboldt and all other documents required by California Coastal Commission for participation in the grant program.

Prepared by



Long-Range Supervising Planner

CAO Approval



REVIEW:

Auditor _____ County Counsel  Human Resources _____ Other _____

TYPE OF ITEM:

☒ Consent
☐ Departmental
☐ Public Hearing
☐ Other _____

PREVIOUS ACTION/REFERRAL:

Board Order No. _____

Meeting of: _____

BOARD OF SUPERVISORS, COUNTY OF HUMBOLDT

Upon motion of Supervisor Wilson

Seconded by Supervisor Sundberg

Ayes Sundberg, Fennell, Bass, Bohn, Wilson
Nays _____
Abstain _____
Absent _____

and carried by those members present, the Board hereby approves the recommended action contained in this Board report.

Dated: June 13, 2017

By: 
Kathy Hayes, Clerk of the Board

SOURCE OF FUNDING:

California Coastal Commission Local Coastal Program Planning Grant.

DISCUSSION:

Planning and Building Department Advanced Planning Division is recommending that the Board adopt a resolution approving the submission of an application, in the amount of \$100,000, to the California Coastal Commission (CCC) to continue the work of updating the Humboldt Bay Area Plan. Grant applications were due May 31, 2017 at 5:00 pm and the Planning and Building Director signed and submitted the grant application subject to the adoption of the resolution of application by the Board of Supervisors. The application materials specify that a resolution from the applicant's governing body must be submitted to the Coastal Commission by 5pm June 30, 2017. All other application materials were due and submitted by the May 31st application deadline.

This application will continue the work that was started with the 2014 CCC Local Coastal Plans (LCP) Planning grant. The 2014 grant began the process of updating the descriptions, policies, maps, and implementation plan for the Humboldt Bay Area Plan consistent with the Coastal Act, and which includes an assessment of the assets at risk to sea level rise and a policy framework to address areas subject to inundation. The primary objective of this LCP update is to build on the coordinated sea level rise planning around Humboldt Bay and address potential impacts to coastal dependent uses, critical public facilities such as roads, wastewater treatment plants and shoreline protection structures, communities, agricultural land, and Environmentally Sensitive Habitat Areas. In addition, the sea level rise planning will help direct policy initiatives to protect priority land uses, e.g. coastal dependent activities (such as coastal-dependent, industrial and recreation) and environmentally sensitive habitat areas.

The 2014 grant also supports a Humboldt Bay-wide tsunami safety planning by compiling community planning efforts that have been completed to date and conducting planning for sparsely populated areas. Work associated with this grant is being done in coordination with the cities of Eureka and Arcata, who are also in the process of updating their LCPs.

The Humboldt Bay Area Plan was certified in 1982 and established policies that govern the use of approximately 21,500 acres of land in the unincorporated area around Humboldt Bay and over 20 miles of Pacific coastline. The LCP has not been comprehensively updated to reflect the significant changes that have occurred locally and regionally over the last 35 years.

It is envisioned the 2017 grant will achieve the following sea level rise adaptation objectives:

1. Utilize existing vulnerability assessments (Humboldt Bay Adaptation Planning Project, City of Eureka, and Humboldt County-HBAP) that cover the economically disadvantaged communities and threatened agricultural areas in the HBAP to support a collaborative process to respond to sea level rise - to moderate potential damages, to take advantage of opportunities, and to cope with the consequences.
2. The County in collaboration with property owners, utility service providers and transportation agencies with facilities in threatened agricultural areas will help develop appropriate adaptation goals and feasible adaptation strategies/measures for a Diked Lands Sea Level Rise Adaptation Pilot Project for a portion of the area that could be

applied to other areas to increase the sustainability of diked agricultural land uses, and to provide as much time as possible for at risk utility and transportation infrastructure to accommodate sea level rise or be relocated.

The submitted grant application is provided in Attachment B. This report is intended to ensure that the Board of Supervisors understands and approves the use of these grant funds. The CCC requires that a staff member be delegated signature authority for grant management and execution purposes. The attached resolution (Attachment A) includes delegation of signature authority to the Director of Planning and Building Department, John Ford.

FINANCIAL IMPACT:

If successful, the County would receive up to \$100,000 of additional funding from this grant that would support consultant work and a portion of Advance Planning staff time devoted to the update of the LCP. Costs associated with long range land use planning are typically borne by the General Fund through the Planning and Building Department Advance Planning Division's budget unit 1100-282 and the General Plan user fees.

This grant request supports the Board's Strategic Framework, Core Roles and Priorities for New Initiatives by protecting vulnerable populations, seeking outside funding sources to benefit Humboldt County needs, and creating opportunities for improved safety and health.

OTHER AGENCY INVOLVEMENT:

There are no other agencies involved with the grant application. If the grant application is funded, other agencies will be involved in implementing the grant, including Public Works, various agencies, companies, and special districts operating in the Humboldt Bay area, and the California Coastal Commission.

ALTERNATIVES TO STAFF RECOMMENDATIONS:

The Board could choose to not apply for these funds. This is not recommended as grant funds available for local coastal planning are highly competitive and there may only be limited opportunities to resubmit.

ATTACHMENTS:

Attachment A	Resolution authorizing submittal and signature for California Coastal Commission Grant
Attachment B	Grant application submitted pending approval of the Resolution in Attachment A.

ATTACHMENT A

**RESOLUTION OF THE BOARD OF SUPERVISORS
AUTHORIZING SUBMITTAL AND SIGNATURE
OF
STATE OF CALIFORNIA COASTAL COMMISSION
LOCAL COASTAL PROGRAM GRANT**

BOARD OF SUPERVISORS, COUNTY OF HUMBOLDT, STATE OF CALIFORNIA

Certified copy of portion of proceedings, Meeting of June 13, 2017

RESOLUTION NO. 17-50

RESOLUTION AUTHORIZING THE SUBMITTAL OF AN APPLICATION TO THE CALIFORNIA COASTAL COMMISSION FOR FUNDING TO SUPPORT LOCAL COASTAL PROGRAM PLANNING; THE EXECUTION OF A STANDARD AGREEMENT IF SELECTED FOR SUCH FUNDING AND ANY AMENDMENTS THERETO; AND ANY RELATED DOCUMENTS NECESSARY TO PARTICIPATE IN THIS GRANT PROGRAM

WHEREAS, the County of Humboldt coastline is approximately 150 miles in length and, pursuant to the California Coastal Act, is divided into six Local Coastal Program (LCP) segments; and

WHEREAS, the Budget Act of 2015 provides \$3 million for Coastal Commission grants in FY 15-16 to local governments to support Local Coastal Program (LCP) Planning; and

WHEREAS, the California Coastal Commission, under the authority of the California Coastal Act, may provide financial assistance to support coastal planning and has approved a competitive grant program to provide such financial assistance for LCP planning; and

WHEREAS, the goal of the grant program is to develop new or updated LCPs in conformance with the California Coastal Act and to reflect current circumstances and new scientific information, including new understandings and concern for the effects of climate change; and

WHEREAS, grant proposals submitted under this grant program must complete land use plan and/or zoning work to either achieve submittal for certification of an LCP Amendment to significantly update a certified LCP or LCP segments, including with special emphasis on effects of climate change and sea-level rise; and

WHEREAS, Humboldt County has an effectively certified LCP; and

WHEREAS, the Humboldt Bay Area Plan has not been updated to reflect current conditions related to sea level rise; and

WHEREAS, Humboldt County desires to pursue a project that would result in the completion and submittal for certification by the California Coastal Commission of an updated Humboldt Bay Area Plan, constituting a partial update of the County's LCP; and

WHEREAS, Humboldt County commits to and agrees to fully support a planning effort intended to update a certified LCP pursuant to the provisions of the California Coastal Act, with full public participation and coordination with the Coastal Commission staff.

NOW, THEREFORE, BE IT RESOLVED, that the Board of Supervisors, of the County of Humboldt, hereby:

1. Finds the above recitations are true and correct.
2. Directs Humboldt County Planning and Building staff to submit the 2017 grant application package to the California Coastal Commission to provide financial and planning assistance, under authority of the California Coastal Act, in the amount of \$ 100,000 to fund the project


BOARD OF SUPERVISORS, COUNTY OF HUMBOLDT, STATE OF CALIFORNIA

Certified copy of portion of proceedings, Meeting of June 13, 2017

RESOLUTION NO. 17-50

- more particularly described in the grant application package.
3. Authorizes the Director of Planning and Building Department, of the County of Humboldt, to execute, in the name of Humboldt County, all necessary applications, contracts and agreements and amendments thereto to implement and carry out the grant application and any project approved through approval of the grant application.

Dated: June 13, 2017



VIRGINIA BASS, Chair
Humboldt County Board of Supervisors


Adopted on motion by Supervisor Wilson, seconded by Supervisor Sundberg, and the following vote:

AYES:	Supervisors	Sundberg, Fennell, Bass, Bohn, Wilson
NAYS:	Supervisors	--
ABSENT:	Supervisors	--
ABSTAIN:	Supervisors	--

STATE OF CALIFORNIA)
County of Humboldt)

I, KATHY HAYES, Clerk of the Board of Supervisors, County of Humboldt, State of California, do hereby certify the foregoing to be an original made in the above-entitled matter by said Board of Supervisors at a meeting held in Eureka, California.

IN WITNESS WHEREOF, I have hereunto set my hand and affixed the Seal of said Board of Supervisors.



By ANA HARTWELL
Deputy Clerk of the Board of Supervisors of the
County of Humboldt, State of California

ATTACHMENT B

**GRANT APPLICATION SUBMITTED
PENDING APPROVAL OF THE RESOLUTION IN ATTACHMENT A**

CALIFORNIA COASTAL COMMISSION

45 FREMONT STREET, SUITE 2000
SAN FRANCISCO, CA 94105-2219
VOICE (415) 904-5200
FAX (415) 904-5400
TDD (415) 597-5885



CALIFORNIA COASTAL COMMISSION

LCP PLANNING

GRANT APPLICATION FORM

FEBRUARY 1, 2017

The California Coastal Commission is pleased to announce the availability of Round 4 grant funding to support local governments in developing or updating Local Coastal Programs (LCPs) pursuant to the California Coastal Act and with special emphasis on addressing impacts from climate change and sea-level rise. For Fiscal Year 2015-2016, Governor Brown approved an augmentation of \$3 million to the California Coastal Commission's budget to support local governments responsible for planning under the California Coastal Act (Coastal Act) to develop or update their Local Coastal Programs. After awarding nearly \$2.5 million in grant funding through a third round of grants in August 2016, approximately \$550,000 is available for the fourth round of grant funding. A full description of the grant program is available here: <https://www.coastal.ca.gov/lcp/grants/>

Coastal Commission staff is available to assist during the application process. Applicants are encouraged to reach out to the LCP Grant team with any questions as they develop their applications. Please note the entire grant application will be public record upon submittal. Click in the shaded text fields to enter text, numbers and dates. The fields will expand to accommodate the data. Grant applications are due by **May 31, 2017 at 5 pm.**

APPLICANT INFORMATION

Applicant name (agency): Humboldt County

Address: 3015 H Street, Eureka, CA 95501

Contact name: Lisa D. Shikany

Title: Senior Planner

Telephone: 707-268-3780

Fax: 707-268-3792 Email: lshikany@co.humboldt.ca.us

Federal Tax ID#: 94-6000513

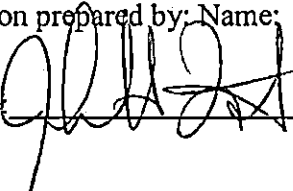
Person authorized to sign grant agreement and amendment:

Name: John H. Ford

Title: Director, Planning and Building Department

Application prepared by: Name: Michael Richardson
Lisa Shikany

Title: Supervising Planner
Senior Planner

Signature: 

Date: 5/30/2017



PROJECT INFORMATION

Project title: Humboldt Bay Area Plan - Strategic Sea Level Rise Adaptation Planning Project

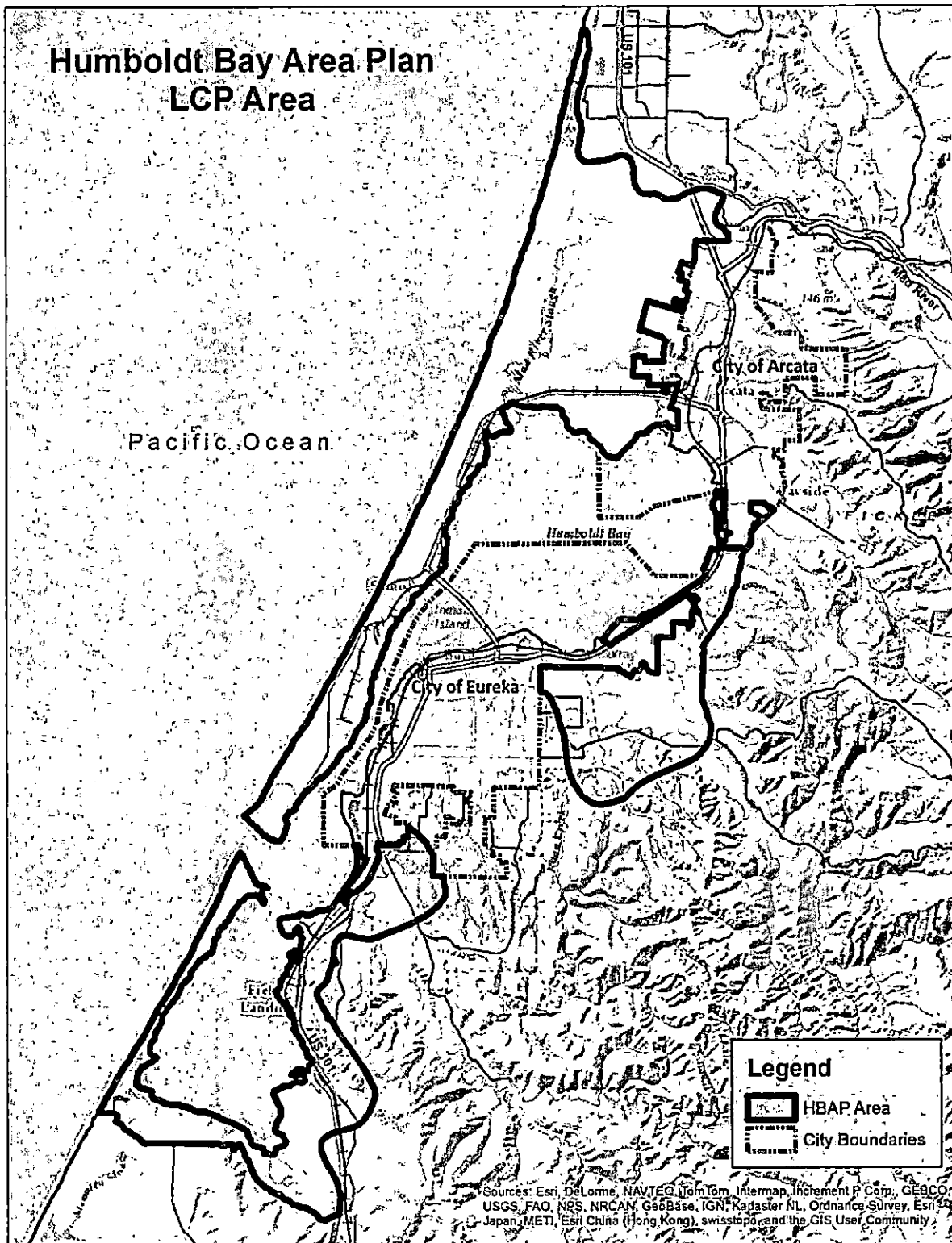
LCP/ LCP Segment: Humboldt Bay Area Plan

Project location: City / Geographic area: Humboldt Bay County: Humboldt

Project timeline: Start date: 9/1/2017 End date: 12/31/2019

MAPS AND PHOTOS

Applications must include a map showing the planning area for the project. Additional photos or maps may be included as attachments if needed to illustrate the proposed project. Please note: any photos and maps you submit are subject to the unqualified and unconditional right of the State of California to use, reproduce, publish, or display, free of charge. Please indicate if crediting is requested for the photos and/or maps.

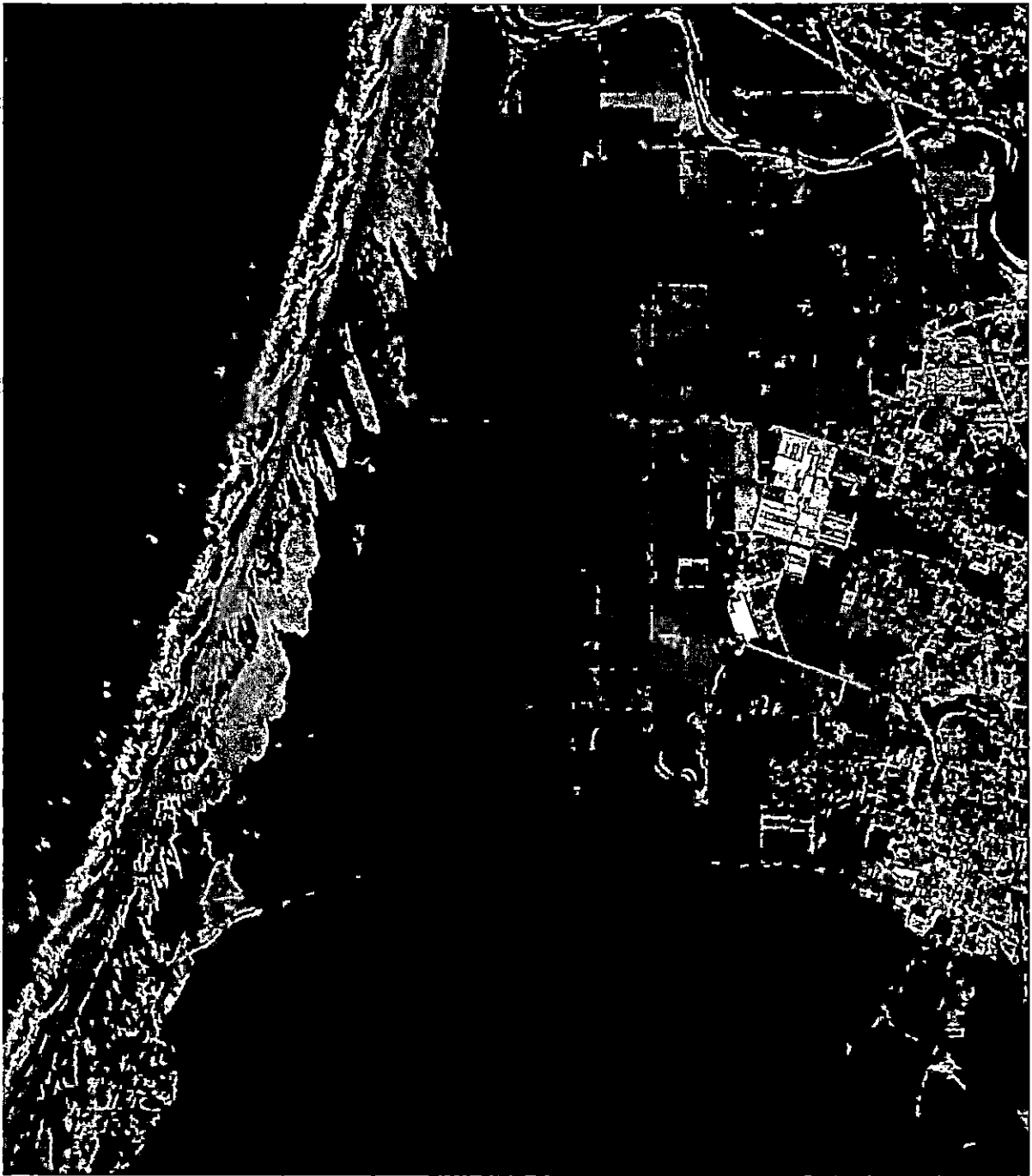




Communities of King Salmon and Fields Landing with potential tidal inundation area from 1.0 meters of sea level rise at mean maximum monthly tide.



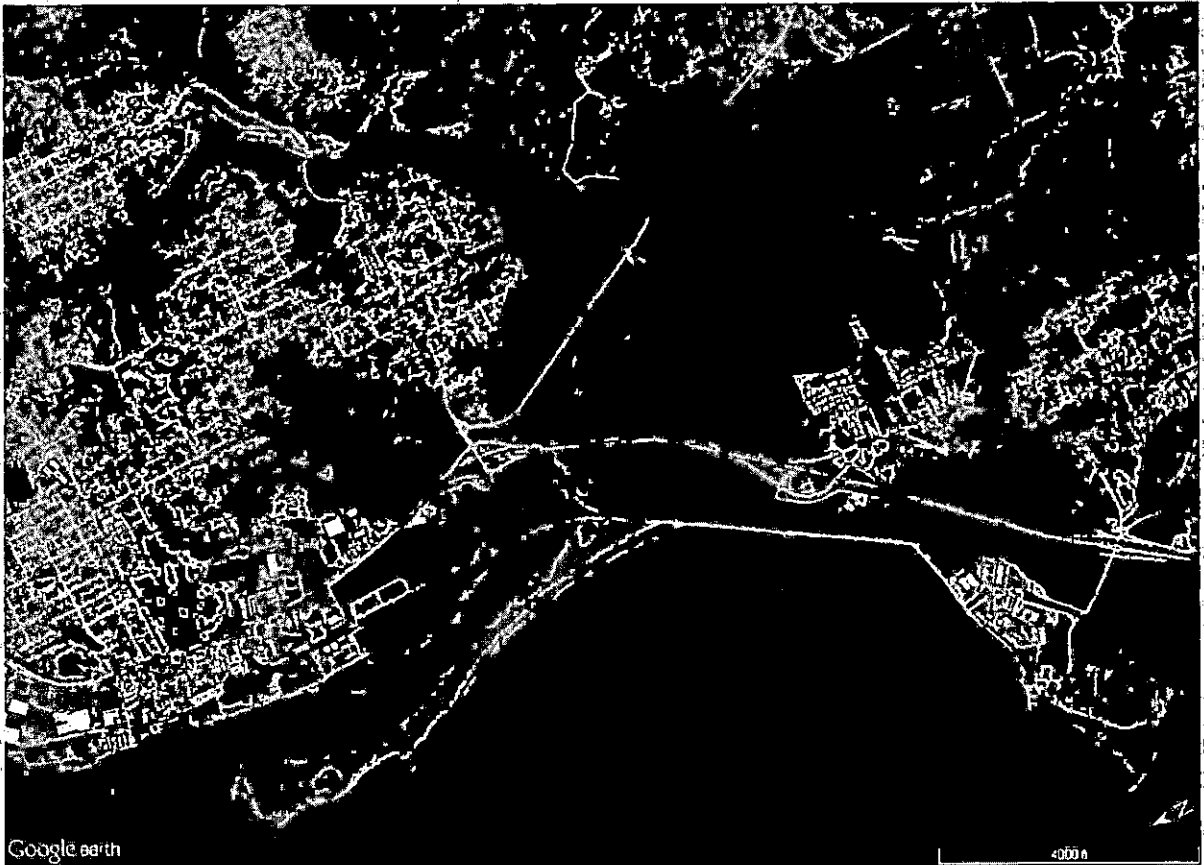
Community of Fairhaven/Finn Town with potential tidal inundation area from 1.0 meters of sea level rise at mean maximum monthly tide.



Diked former tidelands on Mad River Slough/Mad River Bottom and Arcata Bay North with potential tidal inundation area from 0.5 meters of sea level rise at mean monthly maximum tide.



Diked former tidelands on Eureka Slough with potential tidal inundation area from 0.5 meters of sea level rise at mean monthly maximum tide.



Diked former tidelands on Elk River Slough with potential tidal inundation area from 0.5 meters of sea level rise at mean monthly maximum tide.

APPLICATION MATERIALS

1. **PROJECT DESCRIPTION.** Provide a clear description of the proposed project, including the goals and objectives to be achieved, and describe how the proposed project will fulfill the selection criteria identified in Attachment C. This section should be no more than 5 pages in 12 point font, single-spaced.

Description:

Humboldt County is requesting grant funds to supplement the comprehensive update of the Humboldt Bay Area Plan (HBAP), currently underway with the support of grant funding from the California Coastal Commission (CCC) and the Ocean Protection Council (OPC) (grant LCP 14-01 A/1), which includes an assessment of the assets at risk to sea level rise and a policy framework to address areas subject to inundation. The assessment of the assets at risk to sea level rise in LCP 14-01 A/1, which is currently underway, builds on work by the Humboldt Bay Sea Level Rise Adaptation Planning Project and a more detailed asset vulnerability and risk assessment by the City of Eureka of the planning area, which covers important locations in County jurisdiction.



The requested grant funding will support the development of focused adaptation strategies to address sea level rise for some of the County's most vulnerable areas – the economically disadvantaged communities of King Salmon, Fields Landing, and Fairhaven/Finn Town; and the diked former tidelands that support agricultural uses, wildlife, utilities, and state transportation facilities. The County proposes to use the vulnerability assessments completed as part of prior work and identify adaptation options to protect these vulnerable assets from, and help them adapt to, the impacts of sea level rise, by evaluating the timing and viability of the most appropriate options through stakeholder engagement and feasibility analysis.

Background:

Humboldt Bay is the largest protected body of water on the West Coast between San Francisco Bay and Puget Sound and the second largest enclosed bay in California. It contains a vast array of priority coastal land uses, including a variety of coastal access areas, coastal-dependent industrial land, unique environmentally sensitive habitat areas, and prime agriculture land. The Humboldt Bay Area Plan was certified in 1982 and establishes policies that govern the use of approximately 21,500 acres of land in the unincorporated area around Humboldt Bay and over 20 miles of Pacific coastline. The LCP has not been comprehensively updated to reflect the significant changes that have occurred locally and regionally over the last 35 years.

Lands around Humboldt Bay are at particular risk to coastal flooding due to the condition of existing shoreline structures and predicted sea level rise. Approximately 9,000 acres of the LCP area consists of reclaimed tidelands that are protected by dikes that are actively eroding, unmaintained, or with surfaces that are overtopped by periodic extreme high tide events. Humboldt County is working with local partners to understand and plan for these conditions. The State Coastal Conservancy funded a multi-phased sea-level rise planning project on Humboldt Bay, which included Humboldt County as a planning partner. The first phase was the Humboldt Bay Shoreline Inventory, Mapping and Sea Level Rise Vulnerability Project, which identified the condition of shoreline protection structures such as levees and road/rail road beds. The second phase of the project involved site-specific inundation modeling and mapping. Humboldt County is using this modelling, rather than sources such as the NOAA Sea Level Rise Viewer, in the Humboldt Bay LCP update.

The information developed in these earlier efforts shows the communities of King Salmon and Fields Landing may be exposed to sea level rise impacts of 0.5 meters in the near term (2030-2050), and Fairhaven/Finn Town to sea level rise impacts of 1.0 to 1.5 meters in the long term (2070-2100). Also, approximately 56% of all lands zoned Agricultural Exclusive (AE) on Humboldt Bay are vulnerable to tidal inundation today, should the earthen dikes protecting these former tidelands be breached. With 1.5 meters of sea level rise, approximately 68% of AE land on Humboldt Bay could be tidally inundated.

Several critical regional utility assets were located within these diked former tidelands, including optical fiber lines, municipal water transmission pipes, gas lines, electrical transmission towers, and distribution poles. Access to these utility assets will be exposed to the same sea level rise impacts and time periods as the diked agricultural lands that they traverse (0.5 meters by 2030-2050, 1.0 meters by 2050-2070, and 1.5 meters by 2070-2100).



Segments of State Highways 101 and 255 on Humboldt Bay are vulnerable to tidal inundation today if the earthen dikes protecting agricultural lands and the highways are breached. Ultimately, existing dikes are likely to be overtopped starting with 0.5 meters of sea level rise (2050-2100) and tidal inundation of these highways would occur if they have not been elevated.

The cities of Eureka and Arcata have important lands within the Coastal Zone around Humboldt Bay and are in the process of updating their LCPs. The Humboldt Bay Harbor, Recreation and Conservation District (HBHRCD) manages port facilities and exercises permit jurisdiction over all tide, submerged and other lands granted to the District. Humboldt County has been coordinating closely with these agencies, and with the Coastal Commission, with whom Humboldt County maintains an excellent working relationship, in the update to the Humboldt Bay Area LCP, and will continue to do so.

Humboldt County is also in the process of updating its General Plan. Comprehensive background documents have been prepared, including a draft environmental impact report. These documents contain up-to-date demographic, economic, geologic, hazard, safety, and natural resource information that will be extremely useful in updating Humboldt Bay LCP narrative and policy. Humboldt County will leverage these documents, General Plan Update resources such as the www.planupdate.org webpage, and the knowledge gained through the planning process to make the update to the Humboldt Bay Area Plan a success.

Goal:

The goal of the Strategic Sea Level Rise Adaptation Planning Project is to develop actionable strategies and implementation measures that will address the threat of sea level rise based on the valuable sea level rise information from the ongoing update of the Humboldt Bay Area Plan supported with Coastal Commission and Ocean Protection Council grant funding. The Project will focus on two of the most vulnerable assets at risk in the HBAP: economically disadvantaged communities and diked former tidelands. The economically disadvantaged communities are King Salmon, Fields Landing, and Fairhaven/Finn Town, which contains lands owned by a multitude of property owners in need of the County's adaptation planning assistance. The diked former tidelands (Mad River Slough/Arcata Bay North, Bayside, Eureka Slough, Elk River Slough and South Bay) support some of the most productive agricultural land in Humboldt County and the state. They are also owned by many different property owners in need of the County's adaptation planning assistance, and have important coastal resources including wetlands and a national wildlife refuge. Perhaps even more important to the Humboldt Bay Region are the critical utilities (municipal water transmission pipelines/lift stations, sewer lines/lift stations, natural gas lines/stations, electrical transmission towers and distribution poles, and optical fiber lines) and transportation facilities (State Highway 255 and U.S. Highway 101) that are located within diked former tidelands and protected (for now) from tidal inundation by earthen dikes.

Objectives:

The objectives of the Project are:

- 1) Utilize existing vulnerability assessments (Humboldt Bay Adaptation Planning Project, City of Eureka, and Humboldt County HBAP) that cover the economically disadvantaged



communities in the HBAP to support a collaborative process to identify and develop the adaptive capacity (ability to respond to sea level rise, to moderate potential damages, to take advantage of opportunities, and to cope with the consequences) of property owners and utility service and infrastructure providers that make up these communities to adjust to sea level rise exposures.

- 2) The County, in collaboration with property owners and utility service and infrastructure providers in these economically disadvantaged communities, will develop appropriate adaptation goals and feasible adaptation strategies/measures and identify likely funding sources to implement the goals/strategies/measures.
- 3) Utilize existing vulnerability assessments (Humboldt Bay Adaptation Planning Project, City of Eureka, and Humboldt County HBAP) that cover the diked former tidelands in the following hydrologic units in the HBAP: Mad River Slough/Mad River Bottoms/Arcata Bay North, Eureka Slough, and Elk River Slough, to support a collaborative process to identify and develop the adaptive capacity of shoreline owners and other potentially affected property owners, utility service providers and transportation agencies utilizing these diked lands to adjust to sea level rise exposures.
- 4) The County, in collaboration with property owners, utility service providers and transportation agencies within these diked lands, will develop appropriate adaptation goals and feasible adaptation strategies/measures in a "Diked Lands Sea Level Rise Adaptation Pilot Project" that would also be applicable to other hydrologic units, to maintain the sustainability of diked agricultural land uses as long as economically feasible, and to provide as much time as possible for at-risk utility and transportation infrastructure to accommodate sea level rise or be relocated.

Public Benefit/Significance:

The Humboldt Bay Area Plan - Strategic Sea Level Rise Adaptation Planning Project will address the specific adaptation needs of economically disadvantaged communities (King Salmon, Fields Landing and Fairhaven/Finn Town), public coastal access and recreation in those communities, agricultural uses, ESHA (wetlands and wildlife habitat), and critical utility and transportation infrastructure located within diked former tidelands (Mad River Slough/Mad River Bottoms/Arcata Bay North, Eureka Slough, and Elk River Slough). The HBAP is out of date, and does not address sea level rise impacts. While the County is in the process of utilizing CCC/OPC grant funds to update the HBAP, with a portion of the funding to be used to address sea level rise, there is not adequate funding to utilize existing vulnerability assessments to develop the adaptive capacity of property owners, utility providers and transportation agencies, and specific adaptation strategies/measures for these two important and particularly vulnerable assets.

This focused analysis protecting disadvantaged communities and Humboldt County's valuable agricultural lands from sea level rise would have a significant public benefit not only to the residents and landowners who will be directly impacted by sea level rise, but will also benefit the North Coast community in general, which will be impacted secondarily from sea level rise impacts to these two assets. This work is intended to be integrated into the Sea Level Rise Policy Framework (Task 4.1) of the Humboldt Bay Area Plan Update (LCP 14-01 A/1) and will likely be useful in other areas of the county, and the state.



Relative Need for LCP Update/Extent of Update

The HBAP was certified by the Coastal Commission in 1982. While it has been amended over the years, none of these amendments address sea level rise impacts. This proposed Project, which is an additional component of the HBAP LCP update currently underway, will enhance adaptation planning efforts for specific geographic areas: economically disadvantaged communities (King Salmon, Fields Landing, Fairhaven/Finn Town) and important diked former tidelands (Mad River Slough/Mad River Bottoms/Arcata Bay North, Eureka Slough, and Elk River Slough), and provide for the sea level rise adaptation needs unique to these areas.

Addressing the Effects of Climate Change:

The proposed HBAP update's focused use of existing vulnerability assessments to develop actionable strategies and implementation measures for property owners, utility providers and transportation agencies will address current coastal flooding hazards from extreme events and sea level rise impacts (shoreline erosion, flooding, tidal inundation and salt water intrusion) specific to three economically disadvantaged communities (King Salmon, Fields Landing and Fairhaven/Finn Town) and three important diked former tidelands hydrologic units (Mad River Slough/Mad River Bottoms/Arcata Bay North, Eureka Slough, and Elk River Slough).

Likelihood of Success/Effectiveness:

Addressing the specific vulnerabilities to economically disadvantaged communities and diked former tidelands will greatly assist in the development of feasible adaption strategies/measures specific to these two critical assets. The County intends to provide opportunities for public input, including from residents of the targeted disadvantaged communities and the agricultural landowners. Public outreach will take the form of workshops (which are also occurring as part of the Coastal Commission 2014 grant) and public Planning Commission and Board of Supervisors meetings. The public will have opportunities to provide comments on a draft LCP amendment. The County will closely coordinate with Coastal Commission staff throughout the project. Strategies and measures to address sea level rise impacts will be developed in a manner consistent with the Coastal Act and the Coastal Commission's adopted Sea Level Rise Guidance Document. This outreach and coordination, and consistency with Coastal Commission requirements, should insure the LCP amendment that is developed through this effort will have a reasonable chance of certification by the Coastal Commission.

Workload:

No change in areas of certification is proposed as part of this project, and thus there will be no change in areas of permit authority and no shift of permit authority from the state to the county. However, sea level rise vulnerability assessments and adaptation planning will lead to increased awareness of sea level rise impacts, and could lead to an increase in the number of coastal development permit (CDP) applications submitted to the state or County to address these impacts. As much as 80% of the HBAP area affected by 1.0 meter of sea level rise is within the state's retained jurisdiction, and therefore the highest potential increase in CDP applications would be those submitted to the state.



Project Integration/Leverage/Matching Funds:

The County currently has a \$125,000.00 agreement (LCP-14-01 A/1) with the Coastal Commission to update the County's certified HBAP, which can be extended to April 30, 2019. The Ocean Protection Council is also contributing funds under the Commission's agreement to update the HBAP. The additional funding being requested would supplement these existing grant funds, and will provide a more robust HBAP update than the County can currently afford to undertake. The County's proposal would also build on sea level rise vulnerability assessments and adaptation planning that the CCC and OPC have funded for the cities of Eureka (\$250,000.00) and Arcata (\$140,000.00) on Humboldt Bay.

The County's current grant funded (LCP-14-01 A/1) HBAP update project includes the preparation of base-line conditions and a sea level rise vulnerability assessment that identifies assets at risk from sea level rise and their sensitivity to sea level rise impacts (Task 2 of the 2014 grant). It also includes development of a sea level rise policy framework (Task 4 of the 2014 grant). For Task 2, the 2014 grant budgeted \$28,635 in staff time and \$15,000 in direct costs, and for Task 4 \$24,255 in staff time and \$20,000 in direct costs was budgeted, for a total of \$87,890. This amount of funding is marginally adequate to address sea level rise impacts to the HBAP planning area in broad terms, and will not provide for the in-depth focused analysis that could ideally be completed to help more thoroughly address sea level rise impacts to these two highly important and vulnerable assets. The funding being requested for the Humboldt Bay Area Plan -Strategic Sea Level Rise Adaptation Planning Project, the subject of this grant application, will allow the County to build on the broad analysis that is in the process of being completed, and delve more thoroughly into the specific sea level rise impacts to and adaptation strategies for these vulnerable assets.

The currently proposed project would benefit from the background and vulnerability assessment work that is in process under the 2014 grant. The draft adaptation strategies/policies/measures and recommendations of this grant would be integrated with Task 4.1, Sea Level Rise Policy Framework, of LCP-14-01 A/1. The County would fold both projects together, and would strive to complete the currently proposed project on a timeline consistent with our 2014 grant, which must be completed by April 30, 2019. If this coordination is possible, the result would be one LCP Amendment comprised of the 2014 and 2017 grant funded projects.

2. **TASK DESCRIPTIONS AND SCHEDULE.** Provide a description of the tasks that will accomplish your project goals and objectives (see Section A below) and complete a proposed schedule, including anticipated benchmarks, for implementation of each task (see Section B below). Please note that grant work cannot extend past December 31, 2019.

A. TASK DESCRIPTIONS: Identify specific tasks and subtasks to be accomplished and provide a narrative description of each task and subtask, including the technical approach needed to accomplish the task, the roles of partners and stakeholders, and the potential obstacles to successful completion of the goals and objectives discussed in the Project Description (as it relates to each task and subtask). Proposed deliverables for each task



should be described as well (e.g. Sea Level Rise Vulnerability Assessments, Adaptation Reports, Draft Land Use Plans, Draft Implementation Plans, Final Local Coastal Program, etc.). Please describe how stakeholders will be involved in the planning or assessment process, and if your project includes partners, please identify their roles and responsibilities.

Task 1A: Initiate a collaborative adaptive capacity building process for the economically disadvantaged communities of King Salmon, Fields Landing and Fairhaven/Finn Town. Utilize existing vulnerability assessments (Humboldt Bay Adaptation Planning Project, City of Eureka, and Humboldt County HBAP) that cover the economically disadvantaged communities in the HBAP to inform property owners and utility service providers of the vulnerability and risk from sea level rise to these communities; initiate a collaborative process to describe the vulnerabilities and risks to property and utilities/infrastructure from sea level rise; and identify and develop the adaptive capacity of property owners and utility service providers, including County roads and infrastructure that make up these communities, to adjust to sea level rise exposures. Conduct meetings with stakeholders to explore their respective adaptive capacities (initially and potentially) to individually and collectively address impacts from exposure to sea level rise. Prepare a report that describes focused sea level rise vulnerabilities and risks to property owners and utility service providers, and their adaptive capacity.

Task 1B: Develop adaptation goals/strategies/measures, specific to economically disadvantaged communities in the HBAP. The County, in a collaborative process with property owners and utility service providers in the economically disadvantaged communities of King Salmon, Fields Landing, and Fairhaven/Finn Town, will identify adaptation options, the optimal (general) time frame of the adaptation option based on projected inundation levels (recognizing the uncertainty in the magnitude and timing of future SLR), available funding strategies/sources, and potential constraints (regulatory and physical), and then develop recommendations for feasible adaptation strategies/measures and rank potential funding sources to implement goals/strategies/measures.

Task 2A: Initiate a collaborative adaptive capacity building process for the diked former tidelands hydrologic units of the HBAP. Utilize existing vulnerability assessments (Humboldt Bay Adaptation Planning Project, City of Eureka, and Humboldt County HBAP) that cover the diked former tidelands in the following hydrologic units in the HBAP: Mad River Slough/Mad River Bottoms/Arcata Bay North, Eureka Slough, and Elk River Slough, to support a collaborative process to describe the vulnerabilities and risks to property and utilities/infrastructure from sea level rise and identify and develop the adaptive capacity of shoreline property owners and other potentially affected property owners, and utility service providers and



transportation agencies utilizing these diked lands to adjust to sea level rise exposures. This collaborative process would first prioritize the approximately 27 hydrologic sub-units based on the number, type, and criticality of assets at risk to help focus the efforts of the County and stakeholders to implement a Diked Lands Sea Level Rise Adaptation Pilot Project on a high priority hydrologic sub-unit that will serve as a model for all of the other hydrologic units in the HBAP. Conduct meetings with stakeholders to explore their respective adaptive capacities (initially and potentially) to individually and collectively address impacts from exposure to sea level rise. Prepare a report that describes the focused sea level rise vulnerabilities and risks to property owners, utility service providers, and transportation agencies, and their adaptive capacity.

Task 2B: Develop adaptation goals/strategies/measures, specific to diked former tidelands hydrologic units in the HBAP. The County, in a collaborative process with shoreline property owners, other affected property owners, utility service providers and transportation agencies within these diked lands, will develop appropriate adaptation goals and feasible adaptation strategies/measures (using the process identified in Task 1B above) for the Diked Lands Sea Level Rise Adaptation Pilot Project that would also be applicable to other hydrologic units to maximize the time period that diked agricultural land uses are economically sustainable, can support coastal wetlands, and to provide as much time as possible for at-risk utility and transportation infrastructure to accommodate sea level rise or be relocated.

B. SCHEDULE: Complete the schedule template below for each task and subtask. Please specify dates for the submittal of interim drafts as well as final deliverables as applicable (e.g. Draft Vulnerability Assessment and Final Vulnerability Assessment). Please note that grant projects must be completed by December 31, 2019.

Proposed starting date: 9/1/2017

Estimated completion: 4/30/2019

*Note: The County intends to extend the end date for our 2014 LCP grant to 4-30-19. The schedule below reflects the County's intent to coordinate deliverables for this grant with our 2014 grant. The 2014 LCP grant is not reliant on completion of the tasks in this grant, so there is a potential that if the County is unable to complete all tasks proposed for this grant by 4-30-19, we would request an extension to 12-31-19.

Task 1A. Initiate a collaborative adaptive capacity building process for the economically disadvantaged communities of King Salmon, Fields Landing and Fairhaven/Finn Town	Projected start/end dates: 9/1/2017/ 4/30/2018
Outcome/Deliverables Public Forum, Report describing SLR	Projected start/end dates: 9/1/2017/ 4/30/2018



vulnerabilities and risks with a summary of stakeholder input and the capacity of communities to adapt to sea level rise	
Task 1B. Develop adaptation goals/strategies/measures, specific to economically disadvantaged communities in the HBAP	Projected start/end dates: 5/1/2018/ 4/30/2019
Outcome/Deliverables Public Forum and Draft Adaptation strategies/policies/measures and integrate recommendations into Task 4.1, Sea Level Rise Policy Framework, of LCP-14-01	Projected start/end dates: 5/1/2018/ 4/30/2019
Task 2A. Initiate a collaborative adaptive capacity building process for the diked former tidelands hydrologic units of the HBAP	Projected start/end dates: 9/1/2017/ 4/30/2018
Outcome/Deliverables Public Forum and Report describing SLR vulnerabilities and risks with a summary of stakeholder input and the capacity of communities to adapt to sea level rise	Projected start/end dates: 9/1/2017/ 4/30/2018
Task 2B. Develop adaptation goals/strategies/measures, specific to diked former tidelands hydrologic units in the HBAP	Projected start/end dates: 5/1/2018/ 4/30/2019
Outcome/Deliverables Public Forum and Draft Adaptation strategies-policies-measures and integrate recommendations into Task 4.1, Sea Level Rise Policy Framework, of LCP-14-01	Projected start/end dates: 5/1/2018/ 4/30/2019

Please list (1) all significant and pertinent project benchmarks related to the project for which funds are being requested, (2) expected dates for reaching or completing those steps. These dates will be used in monitoring grant progress and in grant reporting under approved grant agreements.



BENCHMARK SCHEDULE

ACTIVITY	COMPLETION DATE
Task 1A Report - SLR vulnerabilities and risks with a summary of stakeholder input and the capacity of communities to adapt to sea level rise	4/30/2018
Task 1B Report - Report describing SLR vulnerabilities and risks with a summary of stakeholder input and the capacity of communities to adapt to sea level rise	4/30/2019
Task 2A Report - SLR vulnerabilities and risks with a summary of stakeholder input and the capacity of communities to adapt to sea level rise	4/30/2018
Task 2B Report - Report describing SLR vulnerabilities and risks with a summary of stakeholder input and the capacity of communities to adapt to sea level rise	4/30/2019

3. **BUDGET.** Please include a task-by-task budget for both County/City staff labor and for potential consultants. Budget detail on sub-tasks is not necessary. Note that consultant costs must be listed by task and must include all costs relating to consultant labor, travel, supplies, overhead, etc. If consultants will be hired at a later date, please include a budget estimate per task that can be updated after hiring the consultants.

APPLICATION BUDGET INFORMATION

Funding Request: \$100,000.00

Total Project Cost: \$100,000.00

	CCC Grant Total	Match/ Other Funds (Source #1)	Match/ Other Funds (Source #2)	Total (LCP Grant Funds + Match/ Other Funds)
LABOR COSTS¹				
County/City Staff Labor				
Task 1A – Initiate a collaborative adaptive capacity building process for the economically disadvantaged communities of King Salmon, Fields Landing and	\$4,196.00			\$4,196.00

¹ Amount requested should include total for salary and benefits.



	CCC Grant Total	Match/ Other Funds (Source #1)	Match/ Other Funds (Source #2)	Total (LCP Grant Funds + Match/ Other Funds)
<i>Fairhaven/Finn Town</i>				
Task 1B – Develop adaptation goals/strategies/mea sures, specific to economically disadvantaged communities in the HBAP	\$8,393.00			\$8,393.00
Task 2A – Initiate a collaborative adaptive capacity building process for the diked former tidelands hydrologic units of the HBAP	\$2,098.00			\$2,098.00
Task 2B – . Develop adaptation goals/strategies/mea sures, specific to diked former tidelands hydrologic units in the HBAP	\$6,295.00			\$6,295.00
Total Labor Costs	\$20,982.00			
DIRECT COSTS				
County/City Staff Project Supplies				
Public Meeting Expenses	\$1,500.00			\$1,500.00
Postage, Copies, and Supplies.	\$420.00			\$420.00
Total	\$1,920.00			\$1,920.00
County/City Staff Travel In State²				
Mileage				
Hotel, etc.				
Total				
Consultants³				
Consultant A				

² Travel reimbursement rates are the same as similarly situated state employees.

³ All consultants must be selected pursuant to a bidding and procurement process that complies with all applicable laws.



	CCC Grant Total	Match/ Other Funds (Source #1)	Match/ Other Funds (Source #2)	Total (LCP Grant Funds + Match/ Other Funds)
<i>Task 1A – Initiate a collaborative adaptive capacity building process for the economically disadvantaged communities of King Salmon, Fields Landing and Fairhaven/Finn Town</i>	\$22,500.00			\$22,500.00
<i>Task 1B – Develop adaptation goals/strategies/mea- sures, specific to economically disadvantaged communities in the HBAP</i>	\$15,000.00			\$15,000.00
<i>Task 2A – Initiate a collaborative adaptive capacity building process for the diked former tidelands hydrologic units of the HBAP</i>	\$22,500.00			\$22,500.00
<i>Task 2B – Develop adaptation goals/strategies/mea- sures, specific to diked former tidelands hydrologic units in the HBAP</i>	\$15,000.00			\$15,000.00
Consultant B, etc.				
<i>Task 1 – Task 1 Name</i>				
<i>Task 2 – Task 2 Name</i>				
<i>Task 3 – Task 3 Name</i>				
Total	\$75,000.00			\$75,000.00
Total Direct Costs				



	CCC Grant Total	Match/ Other Funds (Source #1)	Match/ Other Funds (Source #2)	Total (LCP Grant Funds + Match/ Other Funds)
OVERHEAD/INDIRECT COSTS⁴				
Total County/City Staff Overhead/Indirect Costs	\$2,098.00			\$2,098.00
TOTAL PROJECT COST	\$100,000.00			\$100,000.00

4. **A RESOLUTION FROM THE APPLICANT'S GOVERNING BODY.** Please submit a resolution that contains the following authorizations: 1) authority to submit the proposal, 2) authority to enter into a grant agreement with the California Coastal Commission if the grant is awarded, and 3) designation of the applicant's authorized representative (name and title). A sample resolution is provided as Attachment A. Resolutions should also contain clear statements of commitment to full completion of the intended grant process, including submission of applicable LCP products (LCP submittal or amendment) to the Commission for review.

SUBMISSION DATES

Applications are due **May 31, 2017**. Application packets must be **RECEIVED** by 5pm May 31, 2017. Proposals must be emailed or mailed; faxed responses will not be considered.

If the governing body of an applicant cannot adopt a resolution similar to Attachment A of the application by this date, the applicant can submit the proposal with a draft resolution, provide a date for when the governing body will consider adoption of the resolution and **submit the adopted resolution by 5pm June 30, 2017**. All other materials must be submitted by the May 31, 2017 deadline. Applications will not be deemed complete until an adopted resolution is received. **Applications that do not contain a final, adopted resolution by June 30, 2017 will not be considered for funding.**

⁴ Indirect costs include, for example, a pro rata share of rent, utilities, and salaries for certain positions indirectly supporting the proposed project but not directly staffing it. Amount requested for indirect costs should be capped at 10% of amount requested for "Total Labor."