

ArcGIS Web Map

Humboldt County Planning and Building Department

Printed: April 6, 2019

Web AppBuilder 2.0 for ArcGIS

Map Disclaimer:

While every effort has been made to assure the accuracy of this information, it should be understood that it does not have the force & effect of law, rule, or regulation. Should any difference or error occur, the law will take precedence.

Points

- Override 1
- Override 2

Lines

- Override 1
- Override 2
- Override 3

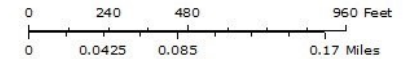
- Override 4
- Override 5
- Override 6
- Override 7

Areas

- Override 1
- City Boundary

□ Counties

□ Parcels (no APN labels)

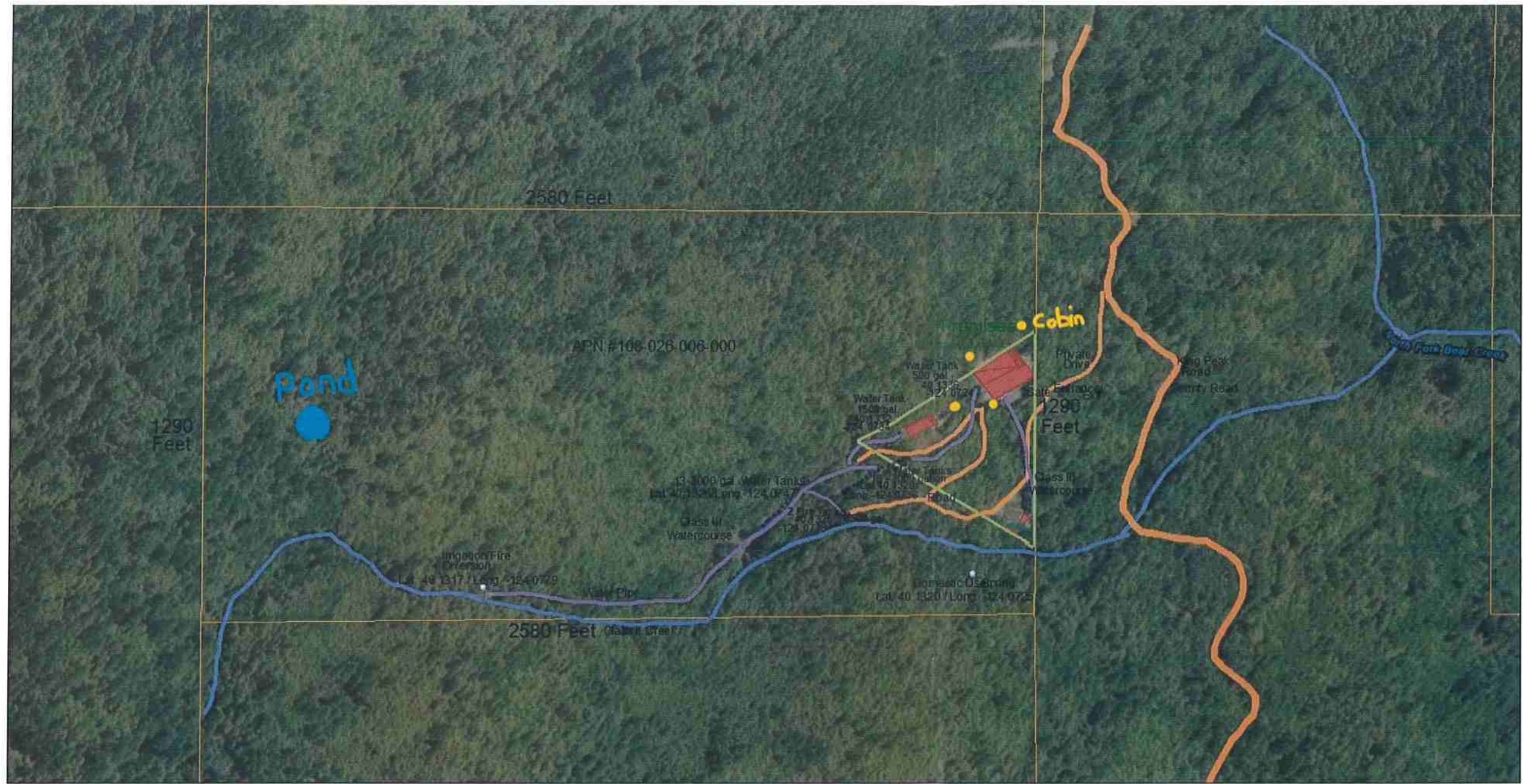


RF= 1:4,514

1 in = 376 ft



Sources: Humboldt County GIS
 Esri, HERE, Garmin, © OpenStreetMap contributors, and the GIS user community
 Source: Esri, DigitalGlobe, GeoEye, Earthstar Geographics, CNES/Airbus DS, USDA, USGS, AeroGRID, IGN, and the GIS User Community



ArcGIS Web Map

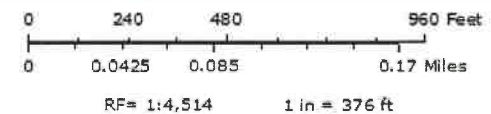
Humboldt County Planning and Building Department

Printed: April 6, 2019

Web AppBuilder 2.0 for ArcGIS

Map Disclaimer:
While every effort has been made to assure the accuracy of this information, it should be understood that it does not have the force & effect of law, rule, or regulation. Should a conflict arise, the law will take precedence.

- | | | |
|---------------|---------------|-------------------------|
| Points | Override 4 | Counties |
| Override 1 | Override 5 | Parcels (no APN labels) |
| Override 2 | Override 6 | |
| Lines | Override 7 | |
| Override 1 | Areas | |
| Override 2 | Override 1 | |
| Override 3 | City Boundary | |



Sources: Humboldt County GIS
Esri, HERE, Garmin, © OpenStreetMap contributors, and the GIS user community
Source: Esri, DigitalGlobe, GeoEye, Earthstar Geographics, CNES/Airbus DS, USDA, USGS, AeroGRID, IGN, and the GIS User Community

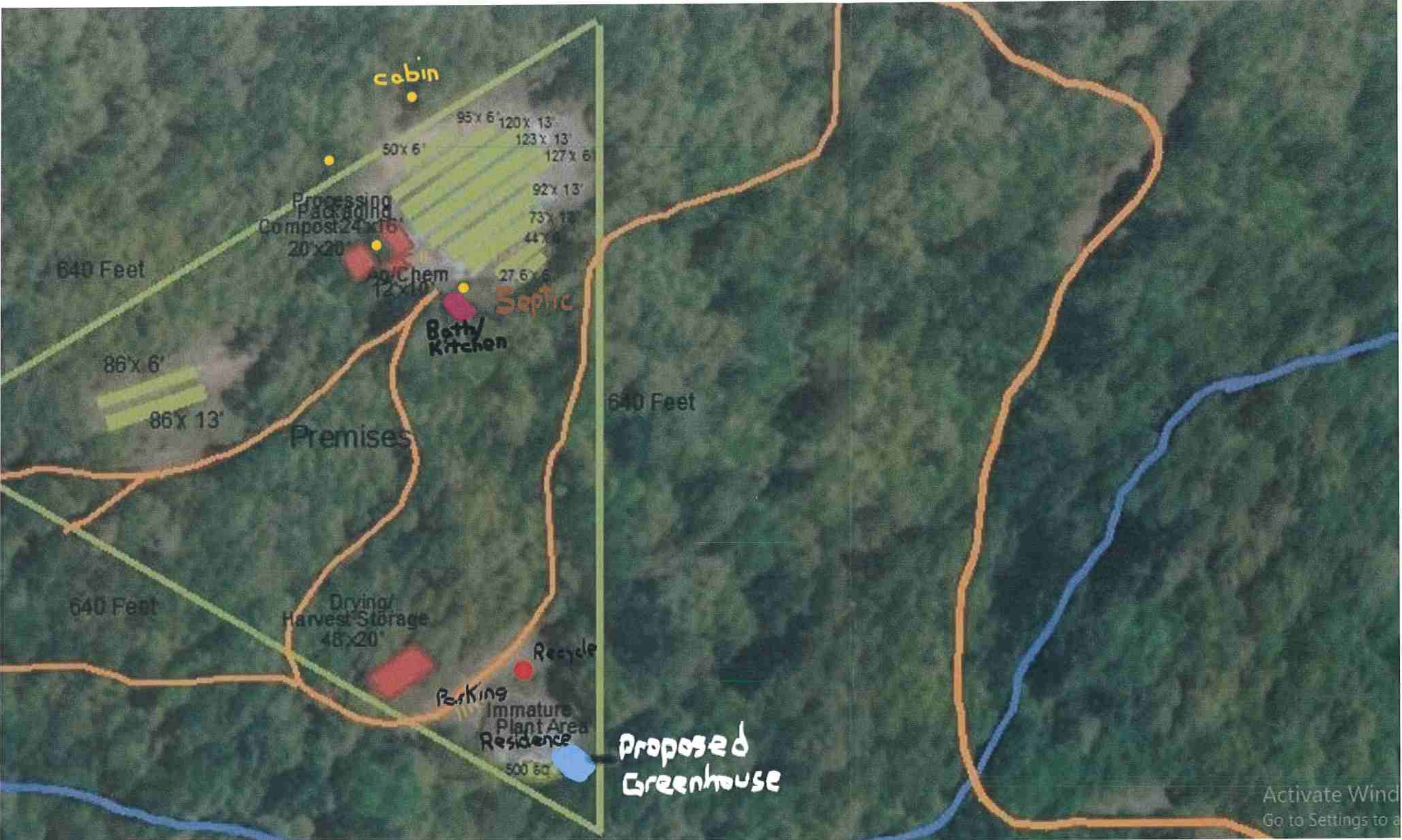


PARCEL MAP KEY
APN #108-026-006-000
Humboldt County



CannaDreams LLC
LCA18-0002490

- Parcel Perimeter - Rectangle Shape indicated on map with Light Blue Border - 2583 feet x 1293 feet
- Premises Perimeter- Triangle Shape indicated on map with Green Border- 640 feet x 640 feet x 560 feet
- Water Tank Area 1 – 13 -3000gallon tanks (Lat. 40.1326, Long. -124.0747)
- Water Tank Area 2 - 16 – 3000 gallon tanks (Lat. 40.1328, Long. -124.0738)
- Water Tank #30 – 2000 gallon (Lat.40.1332, Long. -124.0734)
- Water Tank #31 – 500 gallon (Lat. 40.1336, Long. -124.0724)
- Fire Water Tanks- 1 – 4000gallon 1- 2500gallon (Lat. 40.1325, Long. -124.0738)
- Water Tanks are indicated on map with a purple dot
- Watercourses are indicated on map with a dark blue line
- Water Pipes are indicated with a purple line
- King Peak Road is indicated with an orange line
- Roads on parcel are indicated with a red line
- Small Domestic Use Spring indicated with blue pin (Lat. 40.1321, Long. -124.0730)
- Cultivation Diversion and Fire Prevention Diversion on Class II watercourse indicated with blue pin (Lat. 40.131703, Long. -124.077987)
- Pond (proposed) Blue Dot (Lat. 40.1330, Long. -124.0788).
- Cabins (proposed) Yellow Dots (4)



RECEIVED
NOV 14 2019
Humboldt County
Cannabis Svcs.

PREMISES DIAGRAM LEGEND



Canopy Areas

Hoop Houses

1. 86' x 6'
2. 86' x 13'
3. 95' x 6'
4. 120' x 13'
5. 123' x 13'
6. 127' x 6'
7. 92' x 13'
8. 73' x 13'
9. 44' x 6'

Total 8534 sq. ft.

Open Area Beds

1. 27.6' x 6'
 2. 50' x 6'
- Total 466 sq. ft.

GreenHouse Immature Plant Area

Total 500 sq. ft.

Total Aggregate Canopy Area 9500 square feet

- Processing and Packaging Area 16' x 24' (proposed construction, 2020)
- Drying and Harvest Storage Area 48' x 20' (proposed construction, 2020)
- Ag/Pesticide/Chem Storage Area 12' x 10' (constructed 2015)
- Composting Area 20' x 20' (constructed 2018)
- Recycling Area 12' x 8' (constructed 2017)
- Septic System (propose construction, 2020)
- Kitchen/ Bath House (proposed construction 2020-21)
- Workers Sleeping Quarters – 4 proposed construction (2020-2022)
- Parking - 5 spaces by residence, 2 spaces by Processing Center. Indicated on Premise Map with yellow lines