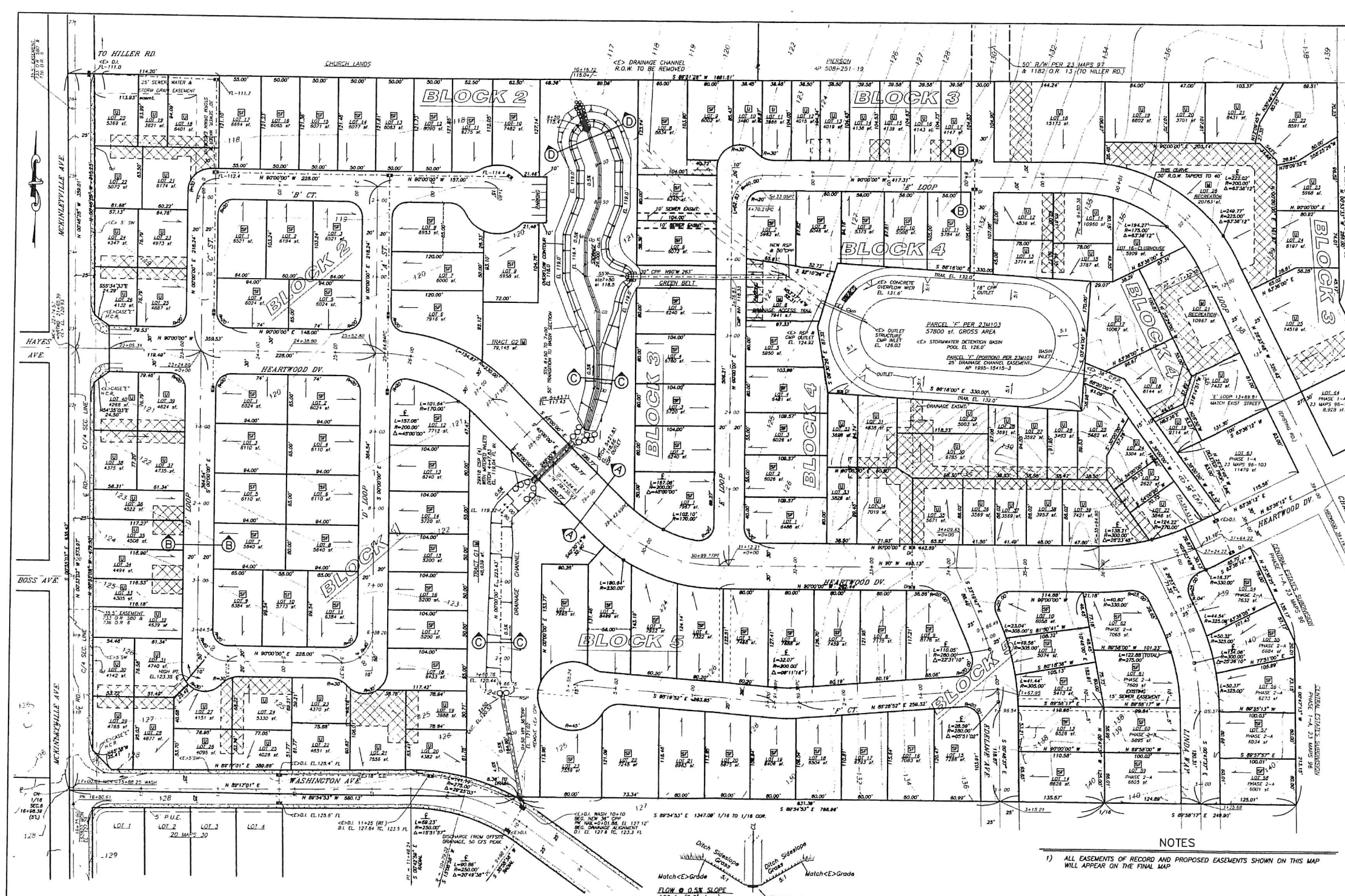


ATTACHMENT B

Location Map



- ### LEGEND
- COMMON ACCESS AND UTILITY EAS FOR APARTMENTS AND TOWNHOME
 - STORM DRAIN OR DRAINAGE CHANNEL FLOW DIRECTION SHOWN
 - SINGLE FAMILY RESIDENCES
 - MISC. USE LOTS (RECREATION, DRAINAGE, ETC.)
 - URBAN TYPE LOTS (TOWNHOMES, APTS., ETC.)

PARCEL SUMMARY

BLOCK 1	LOTS 1-18	SINGLE FAMILY URBAN
BLOCK 2	LOTS 1-17	SINGLE FAMILY URBAN
BLOCK 3	LOTS 1-25	SINGLE FAMILY URBAN
BLOCK 4	LOTS 1-5, 7-11	SINGLE FAMILY URBAN
BLOCK 5	LOTS 1-23	SINGLE FAMILY URBAN

TRACED

- G1 MISC. (GREENBELT, TRAIL, DRAINAGE, S. OF HWY 24)
- G2 MISC. (GREENBELT, TRAIL, DRAINAGE, N. OF HWY 24)

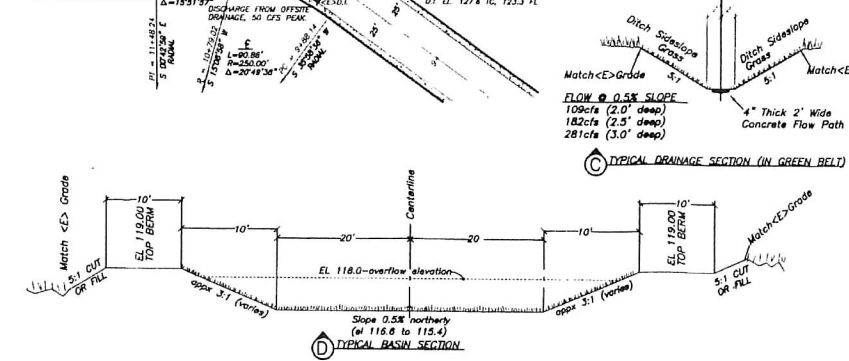
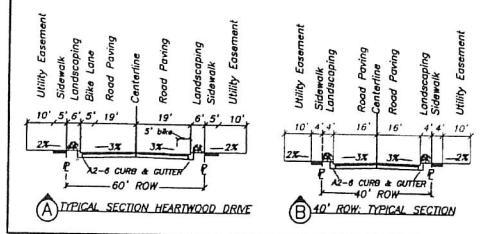
PHASE 2-A (PREVIOUSLY APPROVED PHASE)

LOTS 54-62

SINGLE FAMILY

NOTES

1) ALL EASEMENTS OF RECORD AND PROPOSED EASEMENTS SHOWN ON THIS MAP WILL APPEAR ON THE FINAL MAP



EXISTING EASEMENTS

GRANTEE	PURPOSE	AFFECTS	DEED OR MAP
COUNTY OF HUMBOLDT	PUBLIC LAND	PORTIONS OF MCKINLEYVILLE AVE. AND WASHINGTON AVE.	23 MAPS 96
COUNTY OF HUMBOLDT	DRAINAGE FACILITIES & STORMWATER DETENTION	EXISTING DRAINAGE BASIN AND ACCESS	PARCEL 'F' AND 'H' OF 23 MAPS 96
COUNTY OF HUMBOLDT	DRAINAGE	EXISTING DRAINAGE BASIN	1995-15415-3
COUNTY OF HUMBOLDT	PUBLIC ROAD	MCKINLEYVILLE AVE.	733 O.R. 580 & 736 O.R. 6
MCSO	SEWER	LINDA WAY AND LOTS 61,102	1871 O.R. 60
MCSO	PUBLIC TRAIL	DETENTION BASIN	2005-9648-6

ENGINEER:
 EDWARD SCHILLINGER
 233 K STREET
 EUREKA, CA 95521
 707-442-7048

APPLICANT:
 JLF CONSTRUCTION INC.
 3229 HALFWAY AVE
 MCKINLEYVILLE, CA 95519
 707-839-0137

REVISED MAP ARCHITECT
 PECKHAM INC.
 BILL PECKHAM
 530-529-3953

DATE	REVISION	TENTATIVE MAP	
JAN 10 2007	INCREASE AMT. OF LOTS BY DRAIN.	CENTRAL ESTATES SUBDIVISION P	
APR 24 2008	CONDO/APT LOTS PER B.P.	A PHASED DEVELOPMENT OF A.P. 508-252-0	
DEC 15 2008	DESIGN NEW BASIN	DATE: 01	SCALE: 1"=60'
JAN 6 2009	DETENTION BASIN	DATE: 01	SCALE: 1"=60'
		DATE: 01	SCALE: 1"=60'
		DATE: 01	SCALE: 1"=60'
		DATE: 01	SCALE: 1"=60'

EDWARD SCHILLINGER ENGINEERING AND SURVEYING