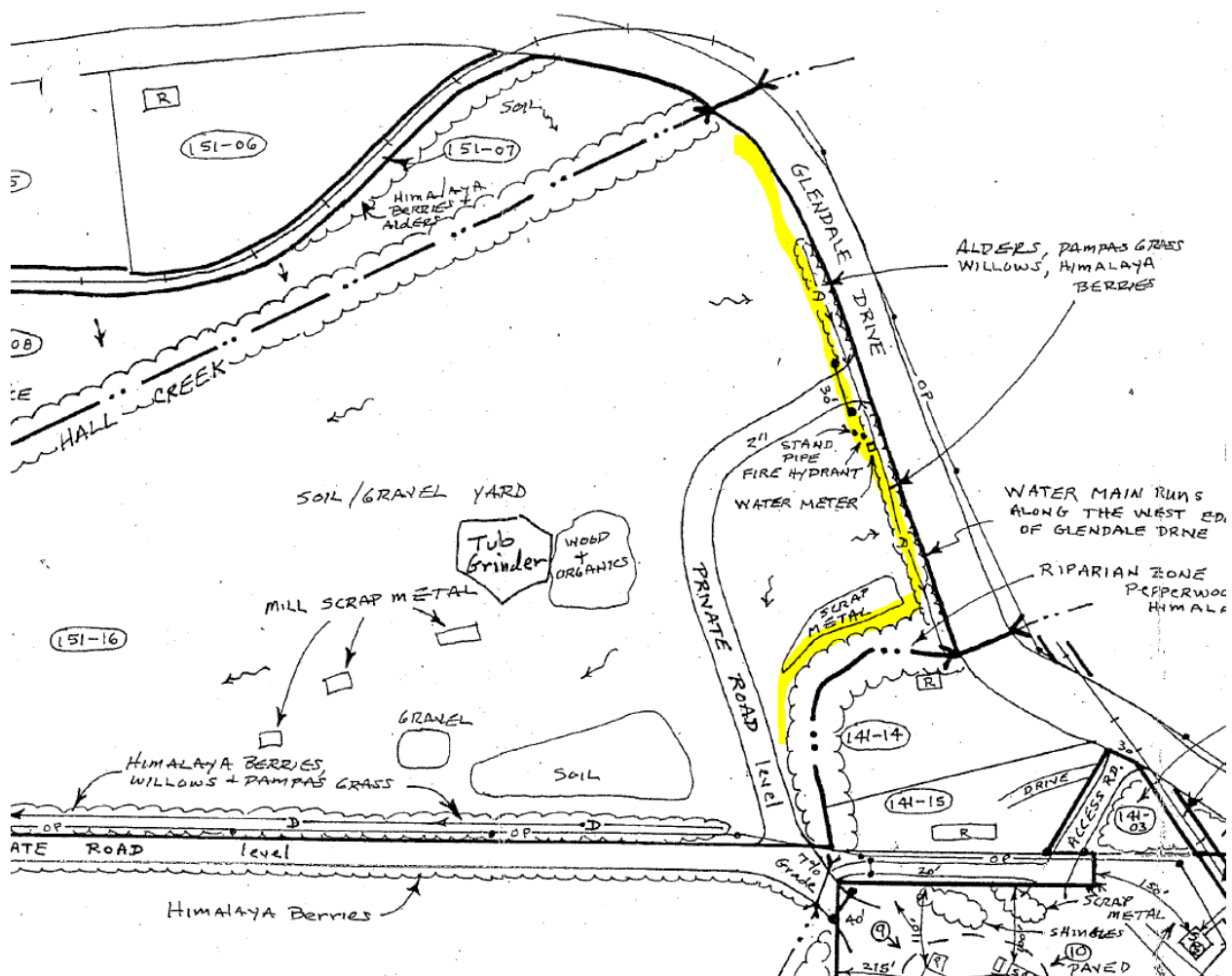


October 18, 2024 Inspection Report Kernan Construction – Cliff Johnson, Planning Manager

Stormwater control berm constructed without grading permits in September-October 2024.

Location approximately 5-10 feet from top of bank of Noisy Creek and from a drainage (and possible watercourse along Glendale Drive). Vegetation was removed, likely including alders and willows. Berm generally shown in yellow below, drawn in onto the original approved site plan. Pictures next page and following.





New Berm



Adjacent to Noisy Creek



Adjacent to Noisy Creek



Adjacent to Noise Creek



Along Glendale Drive and adjacent to a drainage and possible regulated watercourse.