

REPORT

ACCESSIBILITY COMPLIANCE ASSESSMENT REPORT

*Dept. of Public Health Community Wellness Center, 908 7th
Street, Eureka, CA – CASp Assessment III*



PREPARED FOR

Travis I. Smith
County of Humboldt
County Administrative Office
825 5th Street, Room 112
Eureka, California 95501
TSmith@co.humboldt.ca.us

Project #: 1JKI00057.014
Date: 12/22/21



JENSEN HUGHES

Jasper S. Kirsch, CASp, ICC, Assoc. AIA
1220 Concord Ave., Ste. 400
Concord, CA 94520 USA

jkirsch@jensenhughes.com
+1 925-938-3550

Revision Record Summary

<i>Revision Date</i>	<i>Revision No.</i>	<i>Revision Summary</i>
9/02/21	0	Initial Issuance
10/29/21	1	CASp Assessment II, Follow-up Inspection
12/22/21	2	CASp Assessment III, Follow-up Inspection

Table of Contents

1.0 INTRODUCTION	1
2.0 LIMITS OF REVIEW	1
APPENDICES	3
APPENDIX A ACCESSIBILITY COMPLIANCE ASSESSMENT REPORT	A-1

1.0 Introduction

The following is an Accessibility Compliance Assessment Report (ACAR) prepared by Jensen Hughes (Consultant) for the County of Humboldt (Client). Consultant was hired to provide Accessibility Inspection Services pertaining to the County leased facility currently being renovated and located at, 908 7th Street, Eureka, California. Inspections were limited to exterior areas within the site and a selection of interior spaces that are under construction and partially completed. The inspection areas included reference to a previous report with open items identified within the original ADA Access Compliance Assessment report of the property that were conducted and prepared by third-party consultant, SZS Engineering Access. The referenced report is originally dated/prepared on February 20, 2020. The exterior areas within the lot have significantly been altered since the original report.

2.0 Limits of Review

The assessment and recommendations contained within this report are specific to the scoping and technical criteria of the current 2019 California Building Code (CBC) Chapter 11B and the 2010 Americans with Disabilities Act Accessibility Standards (ADAS).

The intent of this report is to verify that accessible elements were made in conformance with the applicable accessibility scoping and technical criteria and to otherwise identify issues of nonconformity within the constructed areas assessed by the Consultant and to provide recommendations to remediate these issues.

Where barriers have been verified as remediated:

- + Consultant will mark that barrier as “CLOSED” within this report with reference to the original barrier number or was a remediation was checked based on client’s direction while on site;
- + Include photo(s) of the new existing conditions;
- + Provide an as-built description of the new existing conditions as they relate to the remediation of the original barrier.

Where barriers have not been remediated:

- + Consultant will mark that barrier remains “OPEN” within this report with reference to the original barrier number;
- + Include photo(s) of the new existing conditions;
- + Provide an as-built description of the existing conditions as they relate to the barrier;
- + Provide a barrier description and citations to the applicable scoping and technical criteria pertaining to the barrier;
- + Provide proposed solutions to remediate the barrier.

This report represents a professional opinion prepared by Consultant, based on our understanding and interpretation of applicable scoping and technical criteria. Consultant will endeavor to use reasonable professional efforts to interpret applicable accessibility requirements as they may apply but Consultant cannot and does not promise, warrant or guarantee that the project will comply with all interpretations of those accessibility requirements and/or similar requirements of other federal, state and local laws, rules, codes, ordinances and regulations as they may be interpreted by others, and/or apply to the project currently or in the future.

Submitted by:

Jensen Hughes

Prepared by:



Jasper Kirsch, CASp #661
Manager I Senior Accessibility Consultant

Reviewed by:



Tadd Tsui, CASp #778
Accessibility Consultant

JK/TT:

1JKI00057.014\ DPHC Wellness Center, 908 7th Street _Accessibility Compliance Assessment Report III_20211222

Appendices

Table of Contents

APPENDIX A ACCESSIBILITY COMPLIANCE ASSESSMENT REPORT A-1

Appendix A Accessibility Compliance Assessment Report

SUMMARY

Facility : 908 7th Street, Eureka, CA - CASp III 12/13/21

Area: Exterior

SZS	32A	Exterior Stairway at Non-accessible Entrance: 0. General Note - General Note	OPEN
SZS	32B	Exterior Stairway at Non-accessible Entrance: Handrails - Bottom Extension at Stairs	OPEN
SZS	32C	Exterior Stairway at Non-accessible Entrance: Handrails - Top Extension at Stairs	OPEN
JH	32D	Exterior Stairway at Non-accessible Entrance: Sidewalk & Walks - Change in Level	OPEN
JH	32E	Exterior Stairway at Non-accessible Entrance: 0. General Note - General Note	CLOSED
SZS	33A	Exterior Walkway to Accessible Entrance: Ramp - Ramp Slope	CLOSED
SZS	33B	Exterior Walkway to Accessible Entrance: Ramp - Wheelguides	OPEN
SZS	33C	Exterior Walkway to Accessible Entrance: Handrails - Extensions	CLOSED
SZS	33D	Exterior Walkway to Accessible Entrance: Ramp - Ramp Top Landing	CLOSED
SZS	34	Exterior Walkway to Accessible Entrance: Sidewalk & Walks - Slope - Cross	CLOSED
SZS	35	Exterior Walkway to Accessible Entrance: Protruding Objects - Protruding Object	CLOSED
SZS	36	Exterior Walkway to Accessible Entrance: Doors - Door Landing	CLOSED
SZS	37	Exterior Parking at Accessible Entrance: Parking - Parking-Accessible Route	CLOSED
JH	37B	Exterior Parking at Accessible Entrance: Parking - Access Aisle-Marking	CLOSED
JH	37C	Exterior Parking at Accessible Entrance: Parking - Accessible Parking Space -Van	CLOSED
SZS	38B	Exterior Parking at Accessible Entrance: Parking - Floor or Ground Surface	CLOSED
SZS	39A	Exterior Parking at Accessible Entrance: Parking - Signage - Minimum Fine	CLOSED
JH	39B	Exterior Parking at Accessible Entrance: Parking - Tow-away Signage	CLOSED
SZS	40A	Exterior Parking at Accessible Entrance: Curb Ramp - Transition	CLOSED
SZS	40B	Exterior Walkway to Waste and Back of Building: Sidewalk & Walks - Slope - Cross	CLOSED
JH	40C	Exterior Walkway to Waste and Back of Building: Doors - Door Landing	CLOSED
JH	40D	Exterior Walkway to Waste and Back of Building: Doors - Maneuvering Clearance	CLOSED
JH	40E	Exterior Walkway to Waste and Back of Building: 0. General Note - General Note	CLOSED
JH	40F	Exterior Walkway to Waste and Back of Building: Protruding Objects - Protruding Object	CLOSED
JH	40G	Exterior Walkway to Waste and Back of Building: Sidewalk & Walks - Hazardous Vehicular Area	CLOSED

Area: Ground Floor

JH	44A	Family Restroom 2: Operable Parts - Operation	OPEN
JH	44B	Family Restroom 2: Lavatories and Sinks - Knee Clearance	OPEN
JH	44C	Family Restroom 2: Lavatories and Sinks - Centerline	OPEN
SZS	61B	First Floor Corridor: Reach Range - Unobstructed Approach	CLOSED
SZS	64D	First Floor - South Exit Door: Handrails - Ramp Extensions	OPEN
SZS	64F	First Floor - South Exit Door: Ramp - Ramp Top Landing	CLOSED

SUMMARY

Area: Second Floor

JH	1A	2nd Floor Bathtub: Showers - 0. Non-compliant Showers	CLOSED
JH	1B	2nd Floor Bathtub: Doors - Maneuvering Clearance	CLOSED
SZS	66B	Stairs: Stairways - Contrasting Stripe	CLOSED
SZS	66C	Stairs: Handrails - Bottom Extension at Stairs	OPEN
JH	66D	Stairs: Stairways - Surfaces	OPEN
SZS	67A	Stairs: Signs - Exit Signage	CLOSED
SZS	77D	2nd Floor Accessible Unisex Restroom 1: Water Closets & Toilet Compartments - Rear Grab Bar	OPEN
SZS	77E	2nd Floor Accessible Unisex Restroom 1: Water Closets & Toilet Compartments - Flush Control	CLOSED
JH	77G	2nd Floor Accessible Unisex Restroom 1: Water Closets & Toilet Compartments - Disposal Units	OPEN
SZS	78E	2nd Floor Accessible Unisex Restroom 2: Water Closets & Toilet Compartments - Overlap	OPEN

908 7th Street, Eureka, CA - CASp III 12/13/21

Facility : 908 7th Street, Eureka, CA - CASp III 12/13/21

Area : Exterior

Location # 32 - Exterior Stairway at Non-accessible Entrance

Accessibility Element: 0. General Note

32A



Specific Item: General Note

Barrier Description:
No specific accessibility barrier being referenced.

As-Built:
12/13/21: Stair construction completed. Extensions and contrasting striping still needed.

SZS 32A

Exterior Stairway at Non-accessible Entrance

OPEN

Accessibility Element: Stairways

32A



Specific Item: Contrasting Stripe

CBC 2019: 11B-504.4.1

Barrier Description:
Exterior: The upper approach and all treads lack stripes providing clear visual contrast which shall be between 2" and 4" wide placed parallel to, and not more than 1" from, the nose of the step or upper approach and shall extend the full width of the step.

SZS 32A

Exterior Stairway at Non-accessible Entrance

OPEN

As-Built:
12/13/21: Not provided

Proposed Solution:
Paint 2" to 4" wide contrasting stripe on every tread along the stairway.

Facility : 908 7th Street, Eureka, CA - CASp III 12/13/21

Area : Exterior

Accessibility Element: Handrails

32B



Specific Item: Bottom Extension at Stairs

ADA 2010: 505.10.3

Barrier Description:
Handrails at the bottom of stairs, do not extend a minimum of one tread depth at the same slope as the stair flight and a minimum of 12" horizontally.

CBC 2019: 11B-505.10.3

As-Built:
12/13/21: 10" on wall side

Exterior Stairway at Non-accessible Entrance

Proposed Solution:
Modify handrail extensions.

SZS 32B

OPEN



Accessibility Element: Handrails

32C



Specific Item: Top Extension at Stairs

ADA 2010: 505.10.2

Barrier Description:
Handrails at the top of stairs do not extend a minimum of 12" horizontally, beginning directly above the first riser nosing.

CBC 2019: 11B-505.10.2

As-Built:
12/13/21: 10" for both.

Exterior Stairway at Non-accessible Entrance

Proposed Solution:
Modify handrail extensions.

SZS 32C

OPEN



Facility : 908 7th Street, Eureka, CA - CASp III 12/13/21

Area : Exterior

Accessibility Element: Sidewalk & Walks

32D



Specific Item: Change in Level

Barrier Description:
Severe Change in level greater than 2".

As-Built:
12/13/21: Curb may be a tripping hazard.

Proposed Solution:
Recommend railing or contrasting color striping.

ADA 2010: 303.1; 403.4

CBC 2019: 11B-303.1; 11B-403.4

JH 32D

Exterior Stairway at Non-accessible Entrance

OPEN

Accessibility Element: 0. General Note

32E



Specific Item: General Note

Barrier Description:
No specific accessibility barrier being referenced.

As-Built:
Directional sign provided to accessible entrance.

JH 32E

Exterior Stairway at Non-accessible Entrance

CLOSED



End of Location: 32 - Exterior Stairway at Non-accessible Entrance

Facility : 908 7th Street, Eureka, CA - CASp III 12/13/21

Area : Exterior

Location # 33 - Exterior Walkway to Accessible Entrance

Accessibility Element: Ramp

33A



Specific Item: Ramp Slope

Barrier Description:
Running slope exceeds 1:12 (8.33%) or cross slope exceeds 1:48 (2.083%).

As-Built:
8/25/21: 7.5-8.2%, slopes are compliant

ADA 2010: 405.2; 405.3

CBC 2019: 11B-405.2; 11B-405.3

SZS 33A

Exterior Walkway to Accessible Entrance

CLOSED



Accessibility Element: Ramp

33B



Specific Item: Wheelguides

Barrier Description:
A continuous curb, 2" high minimum, or barrier not provided that prevents the passage of a 4" diameter sphere, where any portion of the sphere is within 4" of the finish floor or ground surface. To prevent wheel entrapment, the curb or barrier shall provide a continuous and uninterrupted barrier along the length of the ramp.

As-Built:
12/13/21: Wheel guides modified but 90 degree bend poses a hazard for people using wheelchairs.

Proposed Solution:
Provide continuous curbs or wheel guides on each side of the ramp run to prevent wheels from being obstructed.

ADA 2010: 405.9.2

CBC 2019: 11B-405.9.2

SZS 33B

Exterior Walkway to Accessible Entrance

OPEN



Facility : 908 7th Street, Eureka, CA - CASp III 12/13/21

Area : Exterior

Accessibility Element: Handrails

33C



Specific Item: Extensions

Barrier Description:
Handrail extensions are not provided or noncompliant.

As-Built:
10/21/21: Handrails and compliant extensions installed

ADA 2010: 505.10

CBC 2019: 11B-505.10

szs 33C
Exterior Walkway to Accessible Entrance
CLOSED

Accessibility Element: Ramp

33D



Specific Item: Ramp Top Landing

Barrier Description:
Top landing less than 60" x 60" and/or slopes more than 1:48 (2.083%).

As-Built:
8/25/21: Top landing is compliant at 1.6% max. slope

ADA 2010: 405.7.1; 405.7.3

CBC 2019: 11B-405.7.1; 11B-405.7.2.1; 11B-405.7.3

szs 33D
Exterior Walkway to Accessible Entrance
CLOSED



End of Location: 33 - Exterior Walkway to Accessible Entrance

Facility : 908 7th Street, Eureka, CA - CASp III 12/13/21

Area : Exterior

Location # 34 - Exterior Walkway to Accessible Entrance

Accessibility Element: Sidewalk & Walks

34



Specific Item: Slope - Cross

Barrier Description:

Cross slope greater than 1:48 (2.083%).

As-Built:

8/25/21: Cross slope is compliant: 1.7-2.0%

ADA 2010: 403.3

CBC 2019: 11B-403.3

SZS

34

Exterior Walkway to Accessible Entrance

CLOSED

End of Location: 34 - Exterior Walkway to Accessible Entrance

Facility : 908 7th Street, Eureka, CA - CASp III 12/13/21

Area : Exterior

Location # 35 - Exterior Walkway to Accessible Entrance

Accessibility Element: Protruding Objects

35



Specific Item: Protruding Object

Barrier Description:

Object with leading edges between 27" and 80" above the ground protrudes more than 4" into the circulation path.

As-Built:

8/25/21: Lighting rotated to be above 80"

ADA 2010: 307.2

CBC 2019: 11B-307.2

SZS

35

Exterior Walkway to Accessible Entrance

CLOSED

End of Location: 35 - Exterior Walkway to Accessible Entrance

Facility : 908 7th Street, Eureka, CA - CASp III 12/13/21

Area : Exterior

Location # 36 - Exterior Walkway to Accessible Entrance

Accessibility Element: Doors

36



Specific Item: Door Landing

Barrier Description:

Landing within maneuvering clearance of door has slopes greater than 1:48 (2.083%) or is highly irregular.

As-Built:

8/25/21: 1.9% and 0.1%. Slopes are compliant at directional change and door landing.

ADA 2010: 404.2.4.4

CBC 2019: 11B-404.2.4.4

SZS 36
Compliant Walkway to Accessible Entrance
CLOSED



End of Location: 36 - Exterior Walkway to Accessible Entrance

Facility : 908 7th Street, Eureka, CA - CASp III 12/13/21

Area : Exterior

Location # 37 - Exterior Parking at Accessible Entrance

Accessibility Element: Parking

37



Specific Item: Parking-Accessible Route

Barrier Description:
Accessible parking spaces not located on the shortest accessible route from parking to an accessible entrance.

ADA 2010: 208.3.1

CBC 2019: 11B-208.3.1

As-Built:
10/21/21: Parking relocated to entrance.

Exterior Parking at Accessible Entrance

SZS 37

CLOSED



Accessibility Element: Parking

37B



Specific Item: Access Aisle-Marking

Barrier Description:
Access aisles not marked with a blue painted borderline around their perimeter, and the area within shall be marked with hatched lines a max. 36" on center, and the words "NO PARKING" shall be painted on the surface in min. 12" high white letters in a location within the access aisle that is visible from the adjacent vehicular way.

ADA 2010: 502.3.3

CBC 2019: 11B-502.3.3

As-Built:
12/13/21: Blue border provided at head of accessible access aisle.

JH 37B

Exterior Parking at Accessible Entrance

CLOSED

Accessibility Element: Parking

37C



Specific Item: Accessible Parking Space -Van

Barrier Description:
Van accessible parking space is less than 9' wide and 18' long and/or does not have compliant 8' wide access aisle located on the passenger side (Optional: Or is less than 12' wide with a min. 5' wide access aisle on the passenger side).

ADA 2010: 502.2; 502.3.1;

CBC 2019: 11B-502.2; 11B-502.3.1; 11B-502.3.4

As-Built:
12/13/21: 5' wide access aisle provided.

JH 37C

Exterior Parking at Accessible Entrance

CLOSED

Facility : **908 7th Street, Eureka, CA - CASp III 12/13/21**

Area : **Exterior**

End of Location: **37 - Exterior Parking at Accessible Entrance**

Facility : 908 7th Street, Eureka, CA - CASp III 12/13/21

Area : Exterior

Location # 38 - Exterior Parking at Accessible Entrance

Accessibility Element: Parking

38B



Specific Item: Floor or Ground Surface

Barrier Description:

Parking spaces and access aisles have irregular surface or slopes greater than 1:48 (2.083%) in any direction.

As-Built:

12/13/21: Slope corrected to 1.4%.

ADA 2010: 502.4

CBC 2019: 11B-502.4

SZS 38B

Exterior Parking at Accessible Entrance

CLOSED



End of Location: 38 - Exterior Parking at Accessible Entrance

Facility : 908 7th Street, Eureka, CA - CASp III 12/13/21

Area : Exterior

Location # 39 - Exterior Parking at Accessible Entrance

Accessibility Element: Parking

39A **Specific Item: Signage - Minimum Fine** **CBC 2019: 11B-502.6.2**



Barrier Description:
Additional sign below the International Symbol of Accessibility (ISA) stating "Minimum Fine \$250" is not provided.

As-Built:
10/21/21: Parking and fine signs provided. (SZS items 38A & 39A)

SZS 39A
Exterior Parking at Accessible Entrance
CLOSED



Accessibility Element: Parking

39B **Specific Item: Tow-away Signage** **CBC 2019: 11B-502.8.2**



Barrier Description:
Text of tow-away sign does not include the below text or is missing contact information:
"Unauthorized vehicles parked in designated accessible spaces not displaying distinguishing placards or special license plates issued for persons with disabilities will be towed away at the owner's expense. Towed vehicles may be reclaimed at: _____ or by telephoning _____."

As-Built:
12/13/21: Contact information provided.

JH 39B
Parking at Accessible Entrance
CLOSED



End of Location: 39 - Exterior Parking at Accessible Entrance

Facility : 908 7th Street, Eureka, CA - CASp III 12/13/21

Area : Exterior

Location # 40 - Exterior Parking at Accessible Entrance

Accessibility Element: Curb Ramp

40A



Specific Item: Transition

Barrier Description:
Flush transition not provided from ramp to gutter.

ADA 2010: 406.2

CBC 2019: 11B-406.5.8

As-Built:
12/13/21: Flush transition provided.

SZS 40A

Exterior Parking at Accessible Entrance

CLOSED



Accessibility Element: Sidewalk & Walks

40B



Specific Item: Slope - Cross

Barrier Description:
Cross slope greater than 1:48 (2.083%).

ADA 2010: 403.3

CBC 2019: 11B-403.3

As-Built:
8/25/21: Cross slopes less than 2% at completed areas:
0.9%-1.2%

SZS 40B

Exterior Walkway to Waste and Back of Building

CLOSED



Facility : 908 7th Street, Eureka, CA - CASp III 12/13/21

Area : Exterior

Accessibility Element: Doors

40C



Specific Item: Door Landing

Barrier Description:

Landing within maneuvering clearance of door has slopes greater than 1:48 (2.083%) or is highly irregular.

As-Built:

8/25/21: 3.3% (It was noted that gate would be provided at time of the survey). 10/21/21: Gate will not be provided.

ADA 2010: 404.2.4.4

CBC 2019: 11B-404.2.4.4

JH 40C

Walkway to Waste and Back of Building
CLOSED



Accessibility Element: Doors

40D



Specific Item: Maneuvering Clearance

Barrier Description:

Front Approach, Pull Side: Door does not provide a minimum 60" long (measured perpendicular to doorway) x 18" wide (measured beyond latch side) maneuvering clearance (Exterior doors shall instead provide a minimum 24" wide clearance on exterior sides).

As-Built:

21" to side of concrete pad. 10/21/21: Gate will not be provided.

ADA 2010: 404.2.4.1

CBC 2019: 11B-404.2.4.1

JH 40D

Walkway to Waste and Back of Building
CLOSED

Facility : 908 7th Street, Eureka, CA - CASp III 12/13/21

Area : Exterior

Accessibility Element: 0. General Note

40E



Specific Item: General Note

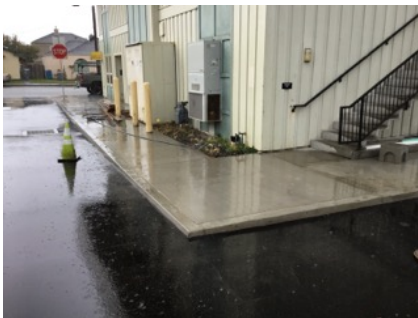
Barrier Description:
No specific accessibility barrier being referenced.

As-Built:
10/21/21: Compliant slopes provided.

JH 40E

Exterior Walkway to Waste and Back of Building

CLOSED



Accessibility Element: Protruding Objects

40F



Specific Item: Protruding Object

Barrier Description:
Object with leading edges between 27" and 80" above the ground protrudes more than 4" into the circulation path.

As-Built:
12/13/21: Bicycle racks provided as cane detection.

ADA 2010: 307.2

CBC 2019: 11B-307.2

JH 40F

Exterior Walkway to Waste and Back of Building

CLOSED



Facility : 908 7th Street, Eureka, CA - CASp III 12/13/21

Area : Exterior

Accessibility Element: Sidewalk & Walks

40G



Specific Item: Hazardous Vehicular Area

CBC 2019: 11B-247.1.2.5

Barrier Description:

Walk crosses or adjoins a vehicular way, and the walking surfaces are not separated by curbs, railings, detectable warning or other elements between the pedestrian areas and vehicular areas.

As-Built:

12/13/21: Railing provided along flush transition between walk and driveway.

Exterior Walkway to Waste and Back of Building

JH 40G

CLOSED



End of Location: 40 - Exterior Walkway to Waste and Back of Building

Facility : **908 7th Street, Eureka, CA - CASp III 12/13/21**

Area : **Exterior**

End of Area: **Exterior**

Facility : 908 7th Street, Eureka, CA - CASp III 12/13/21

Area : Ground Floor

Location # 44 - Family Restroom 2

Accessibility Element: Operable Parts

44A



Specific Item: Operation

Barrier Description:
Object with operable parts is not usable with one hand, requires tight grasping, pinching or twisting to operate, or exceeds 5 lbs to activate.

Proposed Solution:
Provide accessible u-pull or hardware that can be operated with a closed fist.

ADA 2010: 309.4

CBC 2019: 11B-309.4

JH 44A

Family Restroom 2

OPEN



Accessibility Element: Lavatories and Sinks

44B



Specific Item: Knee Clearance

Barrier Description:
Knee clearance measured at a depth of 8" under the lavatory is less than 27" high above the finish floor (Do not consider the overflow).

As-Built:
Knee clearance at front edge (in.): 28.75"

Proposed Solution:
Provide new accessible lavatory with the top rim between 28" and 34" above the floor, and a knee clearance that is a min. 29" above the floor at the front edge, extends under for a min. 8" deep at min. 27" above the floor, and reduces to the toe clearance that is a min. 9" above the floor.

ADA 2010: 306.3.3; 606.2

CBC 2019: 11B-306.3.3; 11B-606.2

JH 44B

Family Restroom 2

OPEN

Facility : 908 7th Street, Eureka, CA - CASp III 12/13/21

Area : Ground Floor

Accessibility Element: Lavatories and Sinks

44C



Specific Item: Centerline

Barrier Description:

Lavatory is not located a min. 18" from an adjacent side wall or partition, measured to the centerline of the lavatory.

As-Built:

Centerline (in.): 17.75" o.c.

Proposed Solution:

Provide new accessible lavatory.

ADA 2010: 606.2

CBC 2019: 11B-606.6

JH 44C
Family Restroom 2
OPEN

End of Location: 44 - Family Restroom 2

Facility : 908 7th Street, Eureka, CA - CASp III 12/13/21

Area : Ground Floor

Location # 61 - First Floor Corridor

Accessibility Element: Reach Range

61B



Specific Item: Unobstructed Approach

Barrier Description:

Object with operable parts not mounted between 15" and 48" above the floor to the operable part for an unobstructed approach.

As-Built:

10/21/21: Coat hook and closet removed.

ADA 2010: 308.2; 308.3

CBC 2019: 11B-308.2; 11B-308.3

SZS 61B
First Floor Corridor
CLOSED

End of Location: 61 - First Floor Corridor

Facility : 908 7th Street, Eureka, CA - CASp III 12/13/21

Area : Ground Floor

Location # 64 - First Floor - South Exit Door

Accessibility Element: Handrails

64D



Specific Item: Ramp Extensions

Barrier Description:
Handrails do not extend a minimum of 12" horizontally beyond the top or bottom of ramp runs.

As-Built:
12/13/21: Handrails provided but extensions are 11" long (SZS items 64D & 64E)

Proposed Solution:
Modify handrail extensions.

ADA 2010: 505.10.1

CBC 2019: 11B-505.10.1

szs 64D
First Floor - South Exit Door
OPEN



Accessibility Element: Ramp

64F



Specific Item: Ramp Top Landing

Barrier Description:
Top landing less than 60" x 60" and/or slopes more than 1:48 (2.083%).

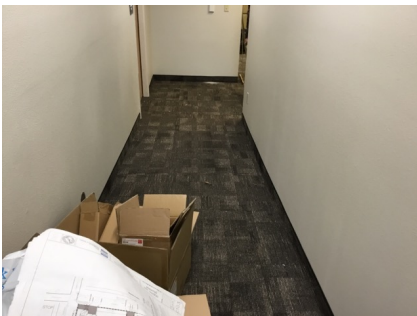
As-Built:
10/21/21: TL 60" x 60" provided

Additional Notes:
6.7% slope, Landings BL 72", and TL 60" x 60"

ADA 2010: 405.7

CBC 2019: 11B-405.7.1; 11B-405.7.2.1; 11B-405.7.3

szs 64F
First Floor - South Exit Door
CLOSED



End of Location: 64 - First Floor - South Exit Door

Facility : **908 7th Street, Eureka, CA - CASp III 12/13/21**

Area : **Ground Floor**

End of Area: **Ground Floor**

Facility : 908 7th Street, Eureka, CA - CASp III 12/13/21

Area : Second Floor

Location # 1 - 2nd Floor Bathtub

Accessibility Element: Showers

1A



Specific Item: 0. Non-compliant Showers

Barrier Description:
Unisex (single-user or family) bathing room does not contain one shower or one shower and one bathtub, one lavatory, and one water closet.

As-Built:
12/13/21: Owner/tenant notes that bathing room couples with applicable code at time of alteration.

Proposed Solution:
Verify compliance with applicable code at time of construction. If room is being altered or is required to be upgraded as part of an alteration project: Remodel to provide an accessible shower, lavatory and water closet. In alterations where it is technically infeasible to comply with Section 11B-603, altering existing toilet or bathing rooms shall not be required where a single unisex (single-user or family) toilet room or bathing room complying with Section 11B-213.2.1 is provided and located in the same area and on the same floor as existing inaccessible toilet or bathing rooms.

ADA 2010: 213.2.1, 213.3.6;

CBC 2019: 11B-213.2.1, 11B-213.3.6; 11B-608.1

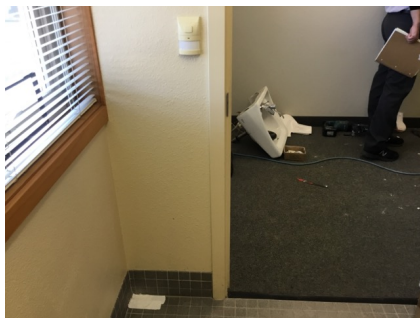
JH 1A

2nd Floor Bathtub

CLOSED

Accessibility Element: Doors

1B



Specific Item: Maneuvering Clearance

Barrier Description:
Front Approach, Pull Side: Door does not provide a minimum 60" long (measured perpendicular to doorway) x 18" wide (measured beyond latch side) maneuvering clearance (Exterior doors shall instead provide a minimum 24" wide clearance on exterior sides).

As-Built:
12/13/21: Door swing modified.

ADA 2010: 404.2.4.1

CBC 2019: 11B-404.2.4.1

JH 1B

2nd Floor Bathtub

CLOSED



End of Location: 1 - 2nd Floor Bathtub

Facility : 908 7th Street, Eureka, CA - CASp III 12/13/21

Area : Second Floor

Location # 66 - Stairs

Accessibility Element: Stairways

66B



Specific Item: Contrasting Stripe

Barrier Description:

Interior: The upper and lower treads on a flight of stairs lacks a stripe providing clear visual contrast which shall be between 2" and 4" wide placed parallel to, and not more than 1" from, the nose of the step or upper approach and shall extend the full width of the step.

As-Built:

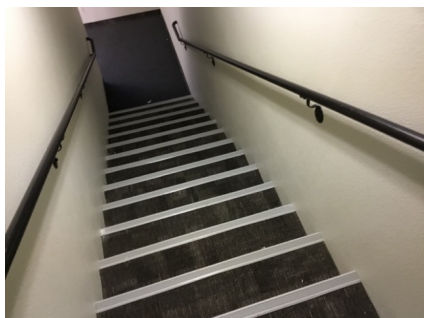
12/13/21: 2" from nosing

Proposed Solution:

Paint 2" to 4" wide contrasting stripe on the upper and lower tread of each flight of stairs.

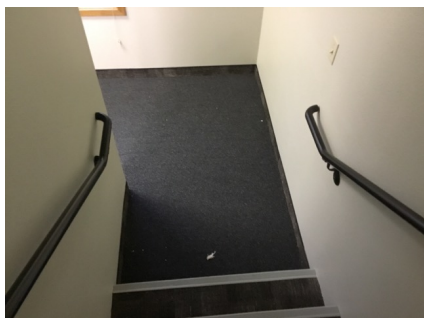
CBC 2019: 11B-504.4.1

SZS 66B
Stairs
CLOSED



Accessibility Element: Handrails

66C



Specific Item: Bottom Extension at Stairs

Barrier Description:

Handrails at the bottom of stairs, do not extend a minimum of one tread depth at the same slope as the stair flight and a minimum of 12" horizontally.

As-Built:

12/13/21: 10" extensions

Proposed Solution:

Modify handrail extensions.

ADA 2010: 505.10.3

CBC 2019: 11B-505.10.3

SZS 66C
Stairs
OPEN

66C



Specific Item: Top Extension at Stairs

Barrier Description:

Handrails at the top of stairs do not extend a minimum of 12" horizontally, beginning directly above the first riser nosing.

As-Built:

12/13/21: 10" extensions

Proposed Solution:

Modify handrail extensions.

ADA 2010: 505.10.2

CBC 2019: 11B-505.10.2

SZS 66C
Stairs
OPEN

Facility : 908 7th Street, Eureka, CA - CASp III 12/13/21

Area : Second Floor

Accessibility Element: Stairways

66D



Specific Item: Surfaces

Barrier Description:

Tread surfaces shall have smooth, rounded, or chamfered exposed edges, and no abrupt edges at the nosing (lower front edge).

As-Built:

12/13/21: 0.5" not beveled

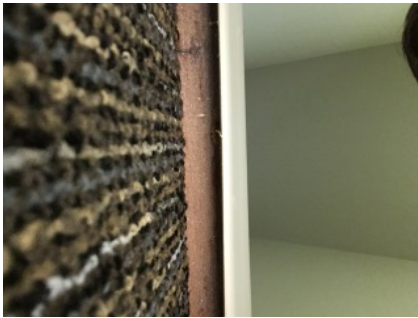
Proposed Solution:

Remodel finish on stairway.

ADA 2010: 504.7

CBC 2019: 11B-504.7

JH 66D
Stairs
OPEN



End of Location: 66 - Stairs

Facility : 908 7th Street, Eureka, CA - CASp III 12/13/21

Area : Second Floor

Location # 67 - Stairs

Accessibility Element: Signs

67A



Specific Item: Exit Signage

Barrier Description:

Required raised character and braille exit sign is not provided.

As-Built:

12/13/21: Sign provided

CBC 2019: 1013.4

SZS 67A
Stairs
CLOSED

End of Location: 67 - Stairs

Facility : 908 7th Street, Eureka, CA - CASp III 12/13/21

Area : Second Floor

Location # 77 - 2nd Floor Accessible Unisex Restroom 1

Accessibility Element: Water Closets & Toilet Compartments

77D



Specific Item: Rear Grab Bar

Barrier Description:

Rear grab bar is not a min. of 36" long or is mounted such that relative to the centerline of the toilet, the grab bar does not extend a min. of 12" on one side and min. 24" on the other side.

As-Built:

12/13/21:
Narrow side (in): 11"
Transfer side(in): 25"
Length (in): 36"
WC: 18" o.c.

Proposed Solution:

Adjust water closet and align grab bar accordingly.

ADA 2010: 604.5.2

CBC 2019: 11B-604.5.2

SZS 77D

2nd Floor Accessible Unisex Restroom 1

OPEN

Accessibility Element: Water Closets & Toilet Compartments

77E



Specific Item: Flush Control

Barrier Description:

Flush handle on toilet is not on the open side of the water closet.

As-Built:

12/13/21: Flush on open side.

ADA 2010: 604.6

CBC 2019: 11B-604.6

SZS 77E

2nd Floor Accessible Unisex Restroom 1

CLOSED

Accessibility Element: Water Closets & Toilet Compartments

77G



Specific Item: Disposal Units

Barrier Description:

Sanitary napkin disposal units, if provided, shall be located below the grab bar, wall mounted on the side wall between the toilet and toilet paper dispenser, adjacent to the toilet paper dispenser.

As-Built:

12/13/21: Mounted on back wall.

Proposed Solution:

Remount sanitary napkin disposal unit.

CBC 2019: 11B-604.7.2

JH 77G

2nd Floor Accessible Unisex Restroom 1

OPEN

End of Location: 77 - 2nd Floor Accessible Unisex Restroom 1

Facility : 908 7th Street, Eureka, CA - CASp III 12/13/21

Area : Second Floor

Location # 78 - 2nd Floor Accessible Unisex Restroom 2

Accessibility Element: Water Closets & Toilet Compartments

78E



Specific Item: Overlap

Barrier Description:

Unpermitted fixture is within the required min. 60" wide clearance around a water closet (Permitted: Grab bars, dispensers, sanitary napkin disposal units, coat hooks, shelves, accessible routes, clear floor space and clearances required at other fixtures and the turning space).

As-Built:

12/13/21: 50.5" to lavatory

Proposed Solution:

Remove and/or relocate permanent fixture.

ADA 2010: 604.3.2

CBC 2019: 11B-604.3.2

szs 78E
Accessible Unisex Restroom 2
OPEN



End of Location: 78 - 2nd Floor Accessible Unisex Restroom 2

Facility : **908 7th Street, Eureka, CA - CASp III 12/13/21**

Area : **Second Floor**

End of Area: **Second Floor**

Facility : **908 7th Street, Eureka, CA - CASp III 12/13/21**

Area : **Second Floor**

End of Report: **908 7th Street, Eureka, CA - CASp III 12/13/21**