

Planning Commissioner Map

Planning Watersheds

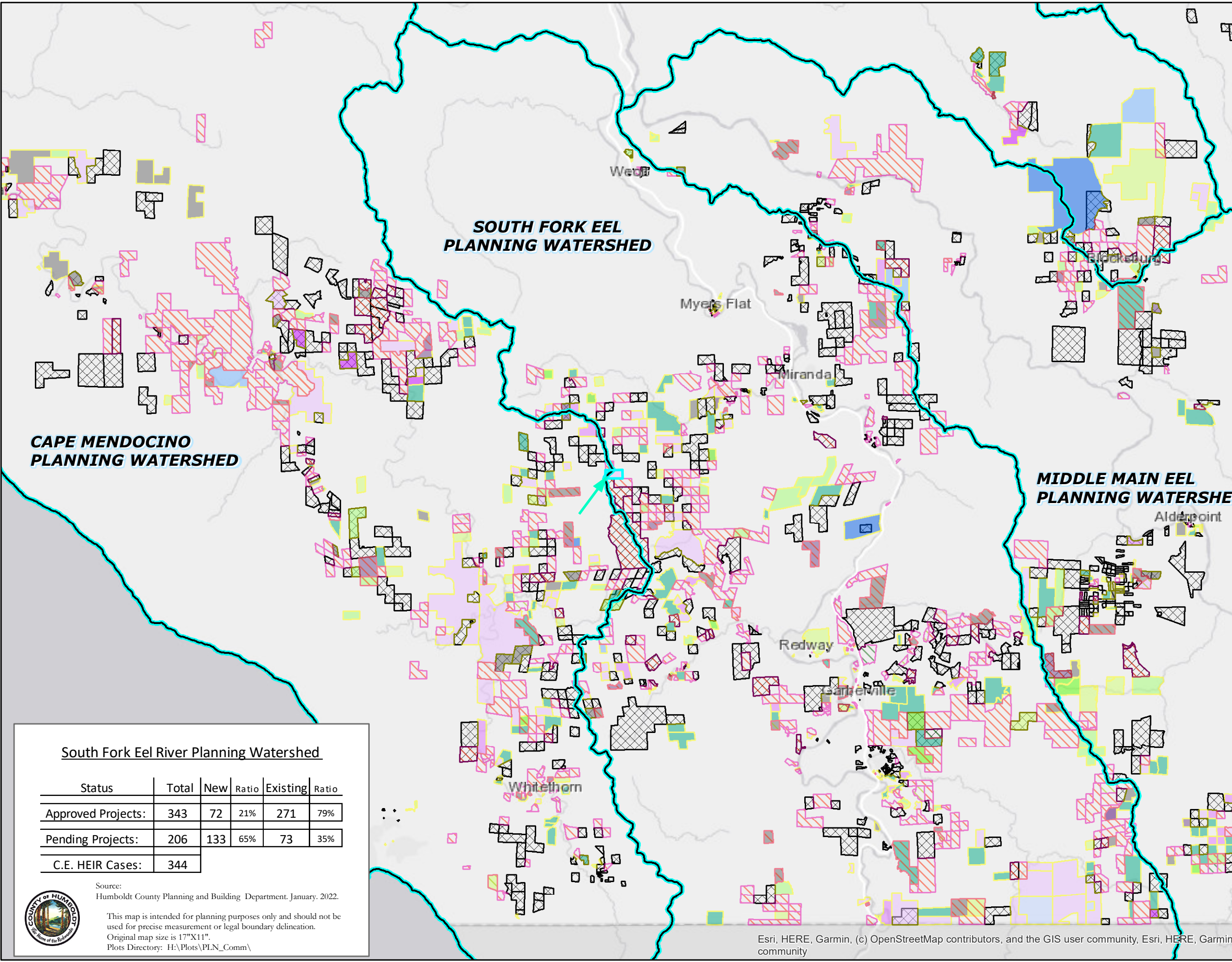
- Planning Watershed
- Detailed Planning Watershed
- Critical Watershed
- CE HEIR Notices

Approved Projects

- Case Complete
- Approved
- Post Approval Monitoring

Pending Projects

- Other
- Additional Info Requested
- Incomplete
- Incomplete/Needs Letter
- Incomplete Submittal
- Holding for Lack of Response
- With Consultant - Phase 1
- Suspense
- Submitted
- Open
- Project Evaluation
- Revisions Submitted
- Revisions Required
- Needs Further Review
- With Consultant - Phase 2
- Review Not Required
- In Referrals
- Hearings
- Staff Report
- Staff Report Processing
- Staff Report- Consultant Ret
- Staff Report- With Consultan



**CAPE MENDOCINO
PLANNING WATERSHED**

**SOUTH FORK EEL
PLANNING WATERSHED**

**MIDDLE MAIN EEL
PLANNING WATERSHED**

South Fork Eel River Planning Watershed

Status	Total	New	Ratio	Existing	Ratio
Approved Projects:	343	72	21%	271	79%
Pending Projects:	206	133	65%	73	35%
C.E. HEIR Cases:	344				



Source:
Humboldt County Planning and Building Department, January, 2022.

This map is intended for planning purposes only and should not be used for precise measurement or legal boundary delineation.
Original map size is 17"X11".
Plots Directory: H:\Plots\PLN_Comm\

Project Number:
PLN-12366-CUP

1 inch = 3.57 miles

0 1 2 4 6 8 Miles