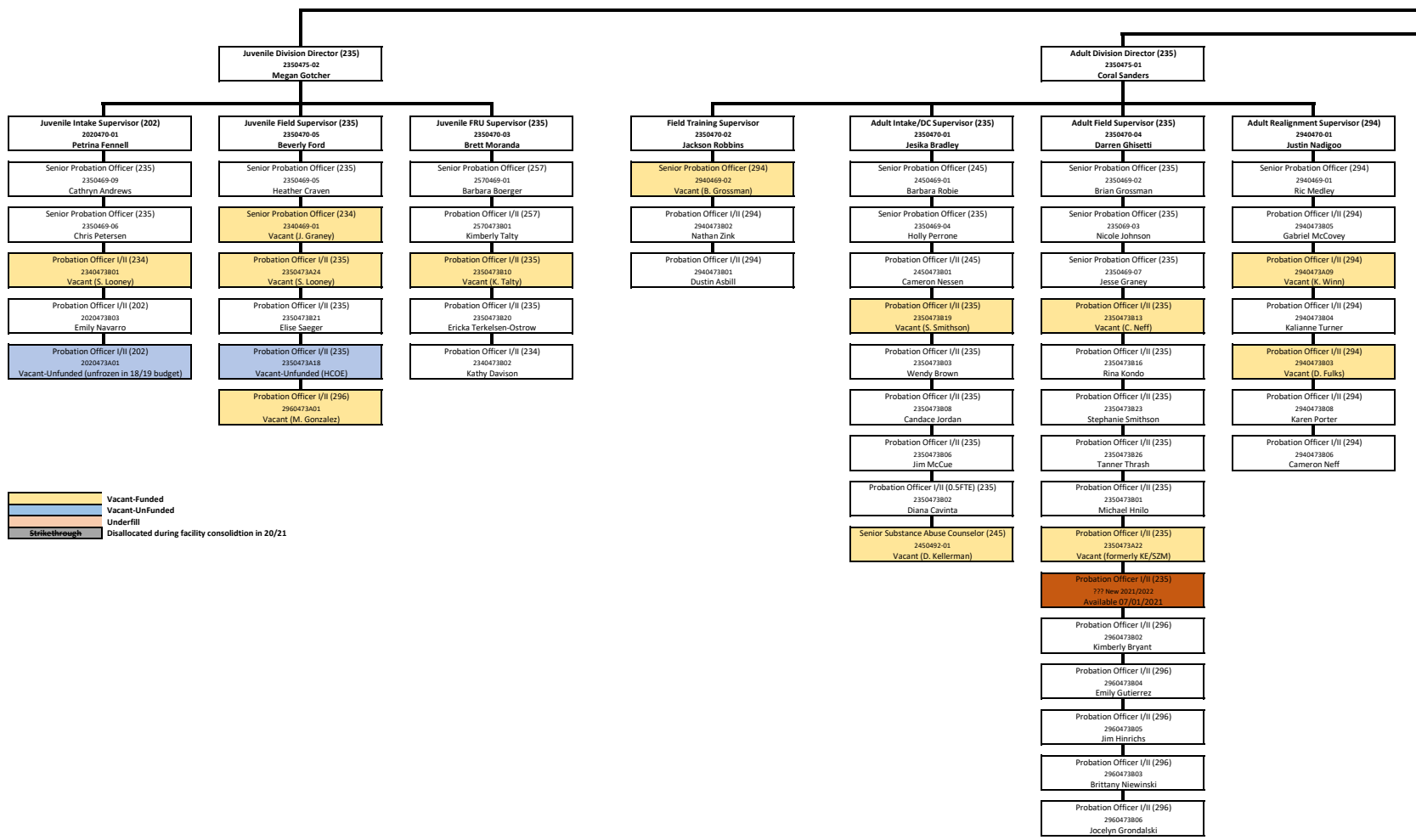


**Chief Probation**  
23508  
Shaun Br

**Assistant Chief Prob**  
23504  
Vacant-Unfunde



Vacant-Funded  
 Vacant-UnFunded  
 Underfill  
 Strikethrough  
 Dislocated during facility consolidation in 20/21

n Officer (235)  
26-01  
enneman

n Officer (235)  
74-01  
d (formerly SMB)

