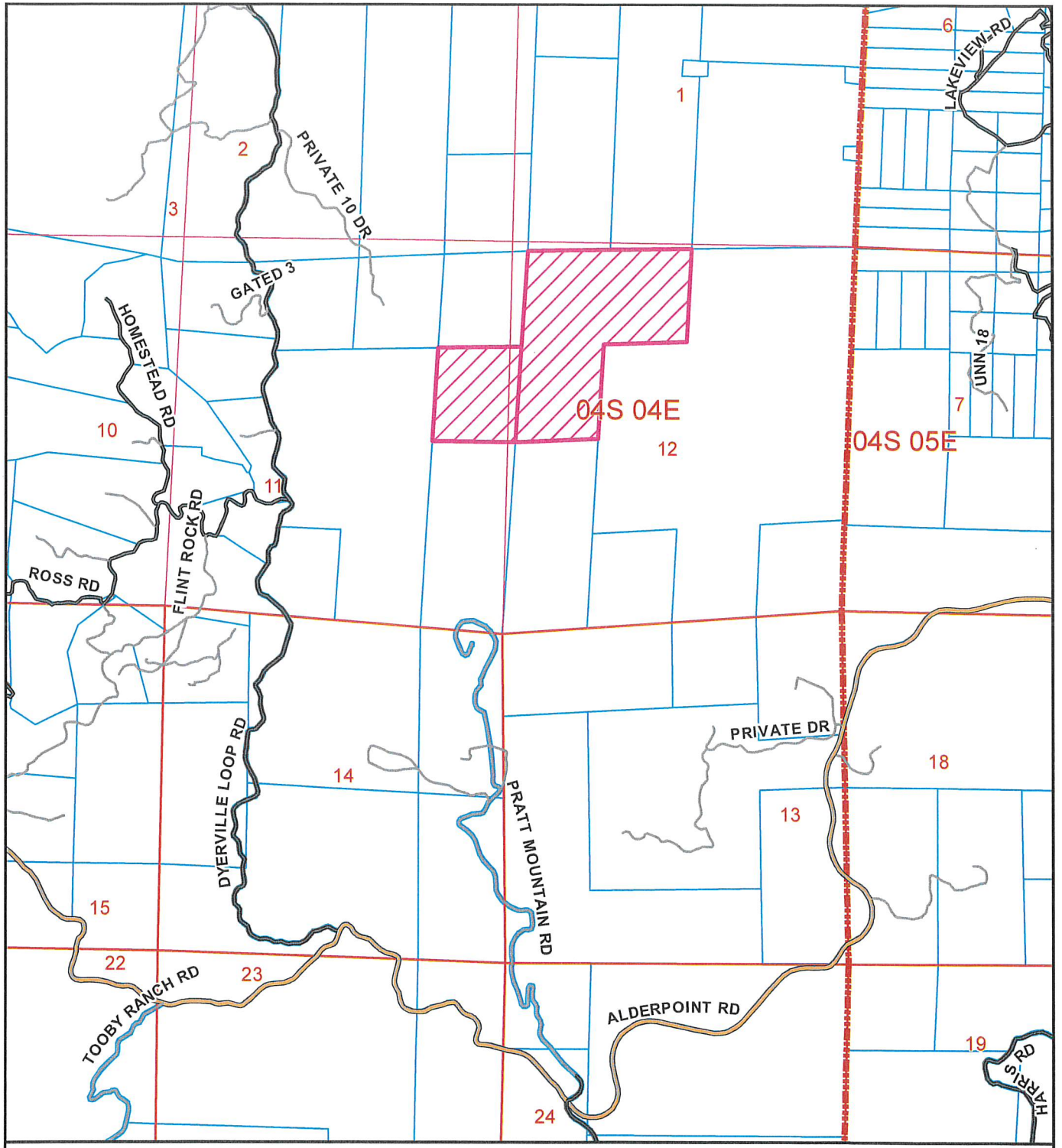


**ATTACHMENT 2**

**Location Maps**



**LOCATION MAP**

**PROPOSED ALCHEMY ATELIER, LLC  
CONDITIONAL USE PERMIT  
MODIFICATION  
GARBERVILLE AREA  
PLN-2020-16326**

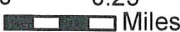
**APN: 216-141-005, 216-144-006  
T4S R4E S11,12 HB&M (Fort Seward)**

Project Area = 

This map is intended for display purposes and should not be used for precise measurement or navigation. Data has not been completely checked for accuracy.



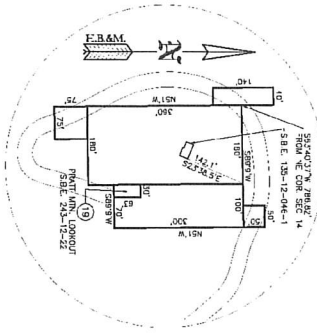
0 0.25  
Miles



Assessor's Map Bk. 216, Pg. 14  
 County of Humboldt, CA.

SECS 1, 2, 12 & PTN 11, 13 & 14 T4S R4E, H.B.&M.

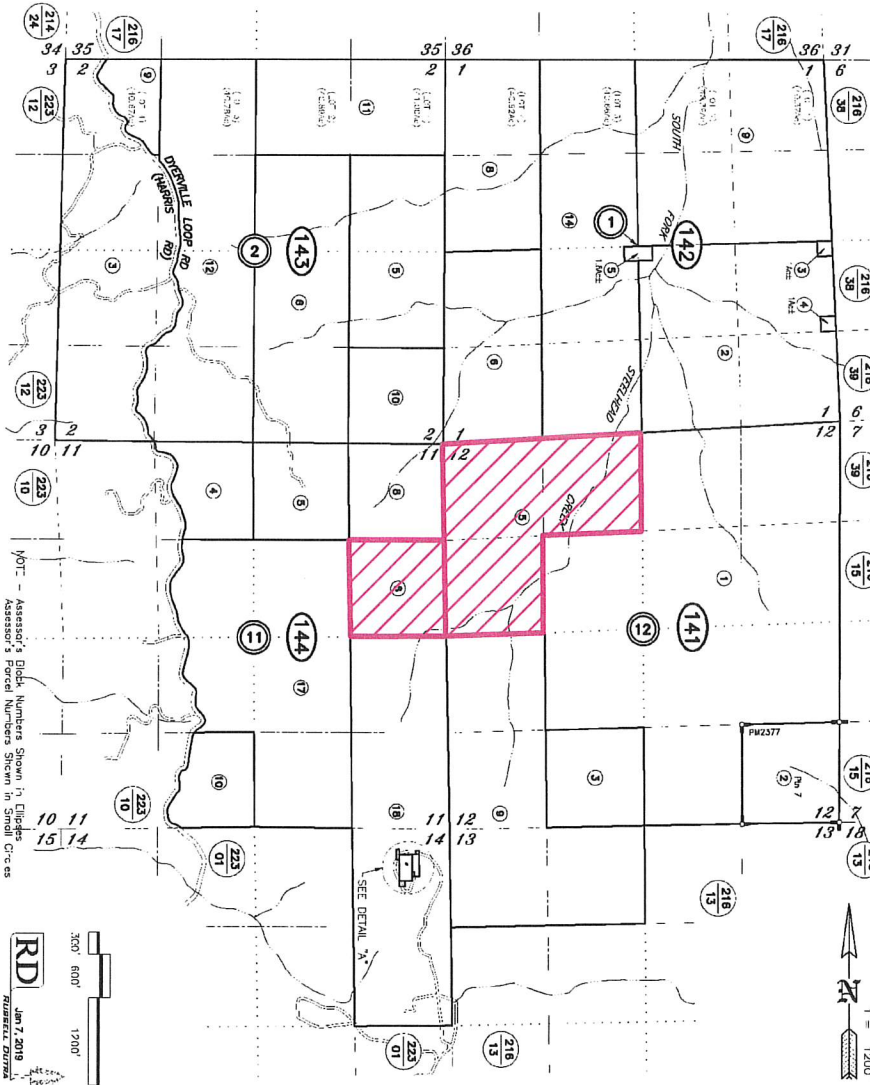
216-14



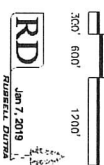
SCALE 1" = 200'  
 PRATT MOUNTAIN RADIO FACILITY

NOTE: POSITIONS OF CREEKS AND ROADS  
 ESTIMATED USING GIS SATELLITE  
 IMAGERY ON JAN. 7, 2019

PW2377, Bk. 21 of Parcel Maps, Pgs 25-36  
 RS, Bk. 4 of Surveys, Pg. 28  
 RS, Bk. 13 of Surveys, Pgs 154-156  
 RS, Bk. 16 of Surveys, Pgs 19-20  
 RS, Bk. 63 of Surveys, Pg. 118



YOTE - Assessor's Block Numbers Shown in Ellipses  
 Assessor's Parcel Numbers Shown in Small Circles



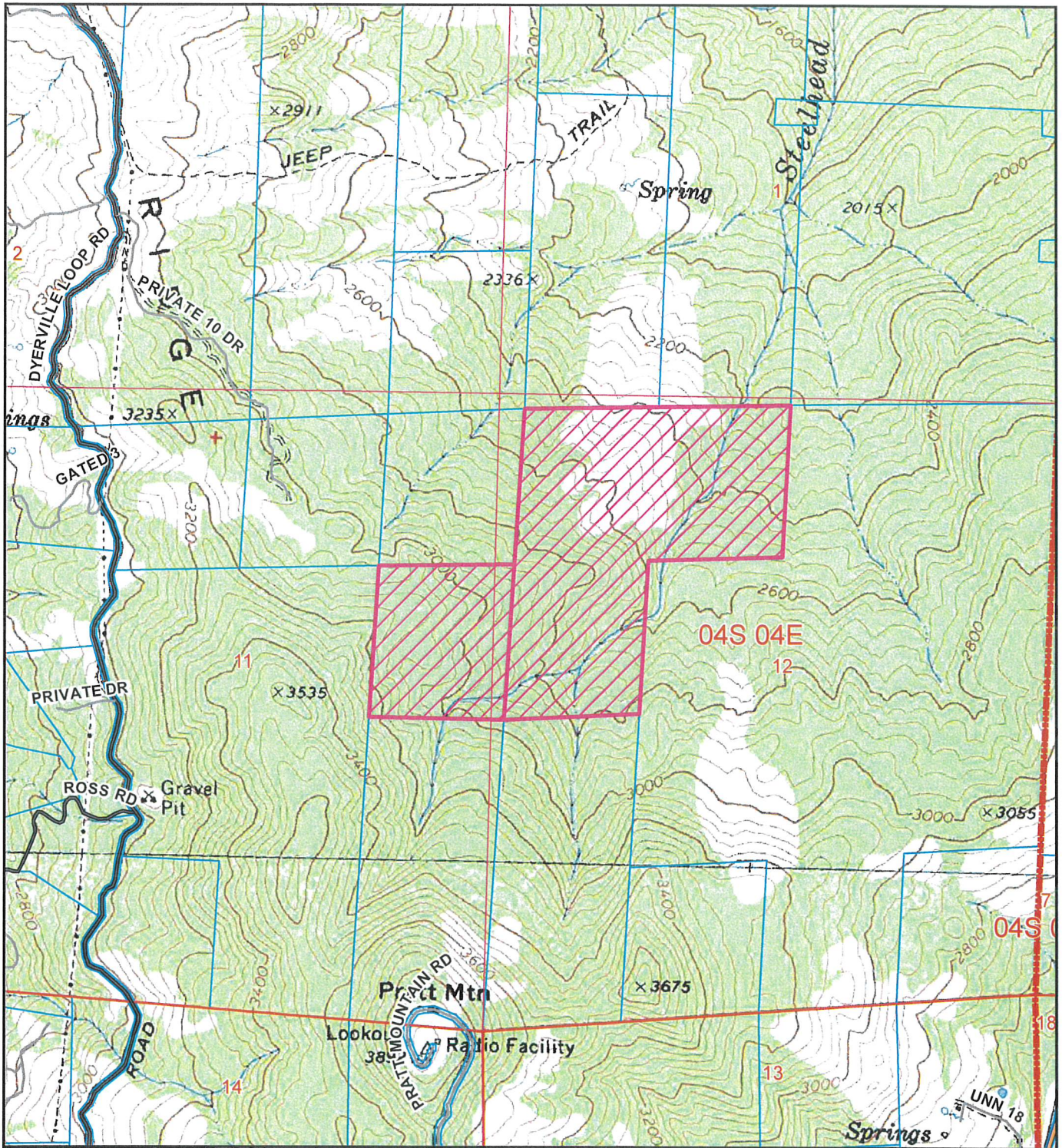
**ASSESSOR PARCEL MAP**  
**PROPOSED ALCHEMY ATELIER, LLC**  
**CONDITIONAL USE PERMIT**  
**MODIFICATION**  
**GARBERVILLE AREA**  
**PLN-2020-16326**  
**APN: 216-141-005, 216-144-006**  
**T4S R4E S11,12 HB&M (Fort Seward)**

Project Area =



MAP NOT TO SCALE

This map is intended for display purposes and should not be used for precise measurement or navigation. Data has not been completely checked for accuracy.



**TOPO MAP**

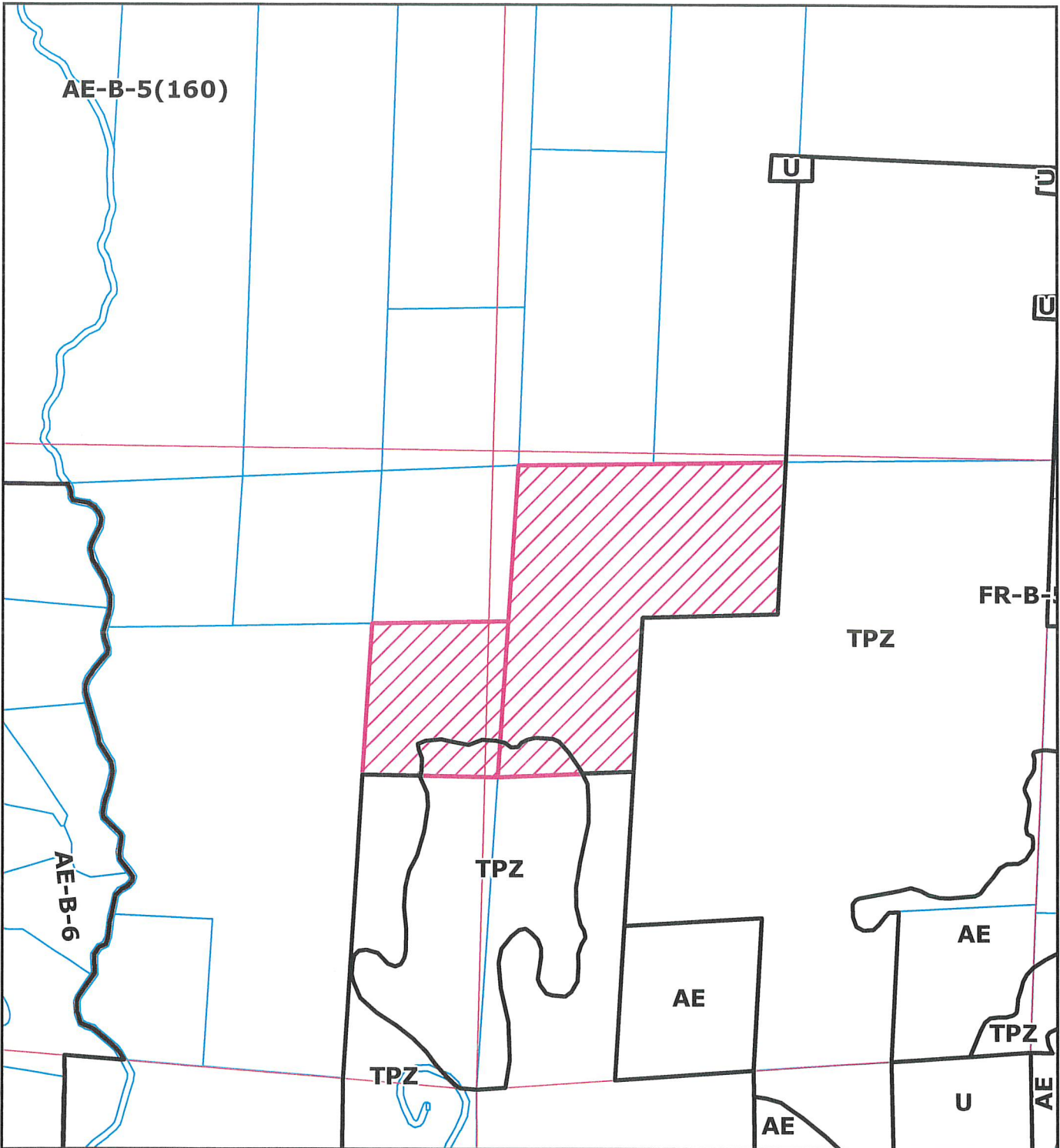
**PROPOSED ALCHEMY ATELIER, LLC  
CONDITIONAL USE PERMIT  
MODIFICATION  
GARBERVILLE AREA  
PLN-2020-16326**

**APN: 216-141-005, 216-144-006  
T4S R4E S11,12 HB&M (Fort Seward)**

Project Area = 

This map is intended for display purposes and should not be used for precise measurement or navigation. Data has not been completely checked for accuracy.





**ZONING MAP**

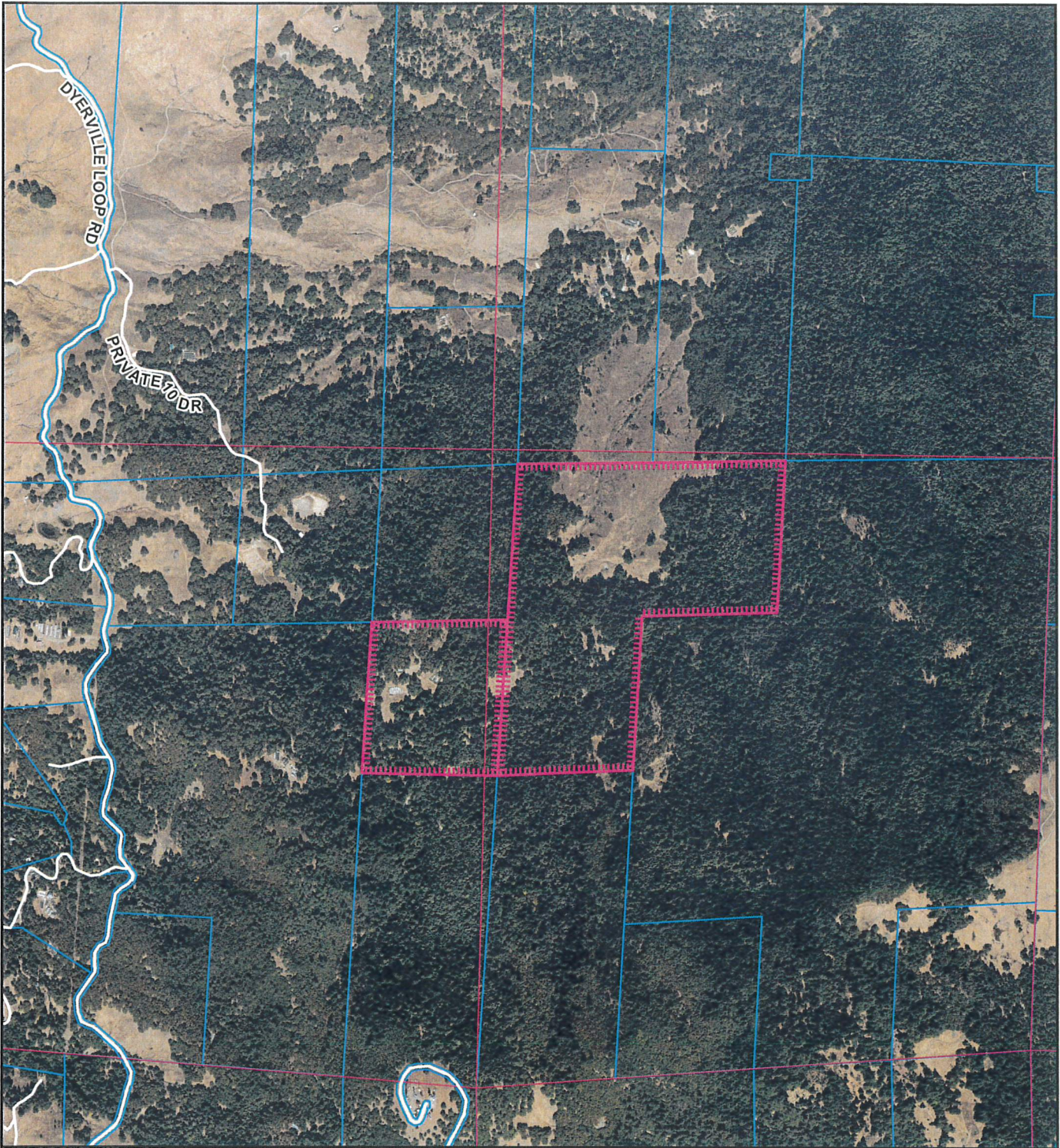
**PROPOSED ALCHEMY ATELIER, LLC  
 CONDITIONAL USE PERMIT  
 MODIFICATION  
 GARBERVILLE AREA  
 PLN-2020-16326**

**APN: 216-141-005, 216-144-006  
 T4S R4E S11,12 HB&M (Fort Seward)**

Project Area = 

This map is intended for display purposes and should not be used for precise measurement or navigation. Data has not been completely checked for accuracy.





**AERIAL MAP**

**PROPOSED ALCHEMY ATELIER, LLC  
 CONDITIONAL USE PERMIT  
 MODIFICATION  
 GARBERVILLE AREA  
 PLN-2020-16326**

**APN: 216-141-005, 216-144-006  
 T4S R4E S11,12 HB&M (Fort Seward)**

**Project Area =** 

This map is intended for display purposes and should not be used for precise measurement or navigation. Data has not been completely checked for accuracy.

