

LOCATION MAP

FINAL MAP SUBDIVISION LOT LINE ADJUSTMENT SPECIAL PERMIT
PROPOSED HOSFORD THOMAS EST
EUREKA AREA
PLN-2023-18081
APN: 018-031-020
T05N R01W S35 HB&M (EUREKA)

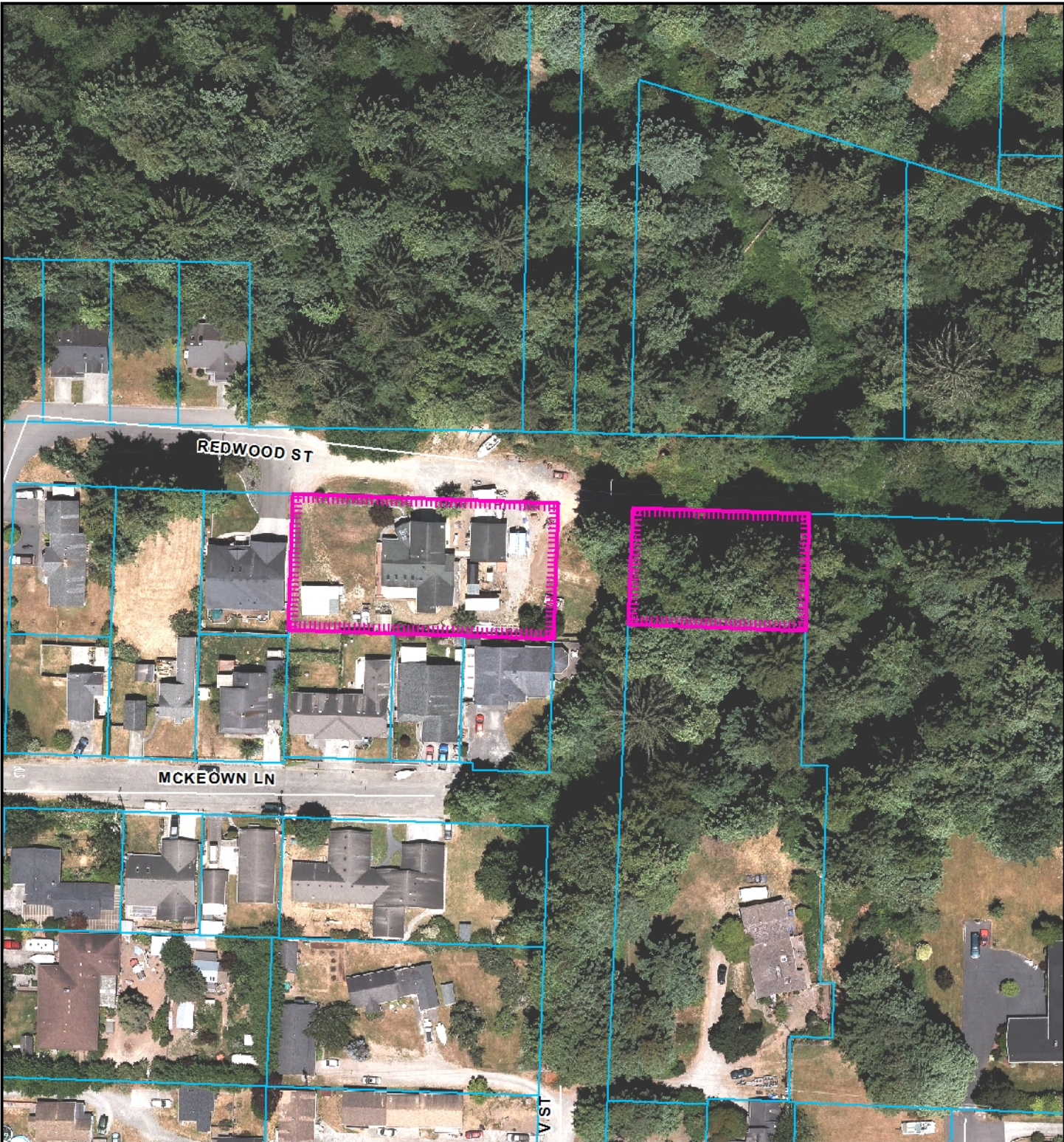


Coastal Zone Boundary

Project Area = 


This map is intended for display purposes and should not be used for precise measurement or navigation. Data has not been completely checked for accuracy.





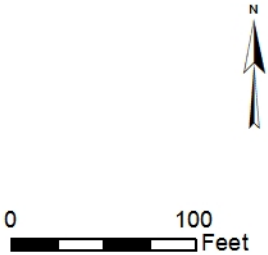
AERIAL MAP

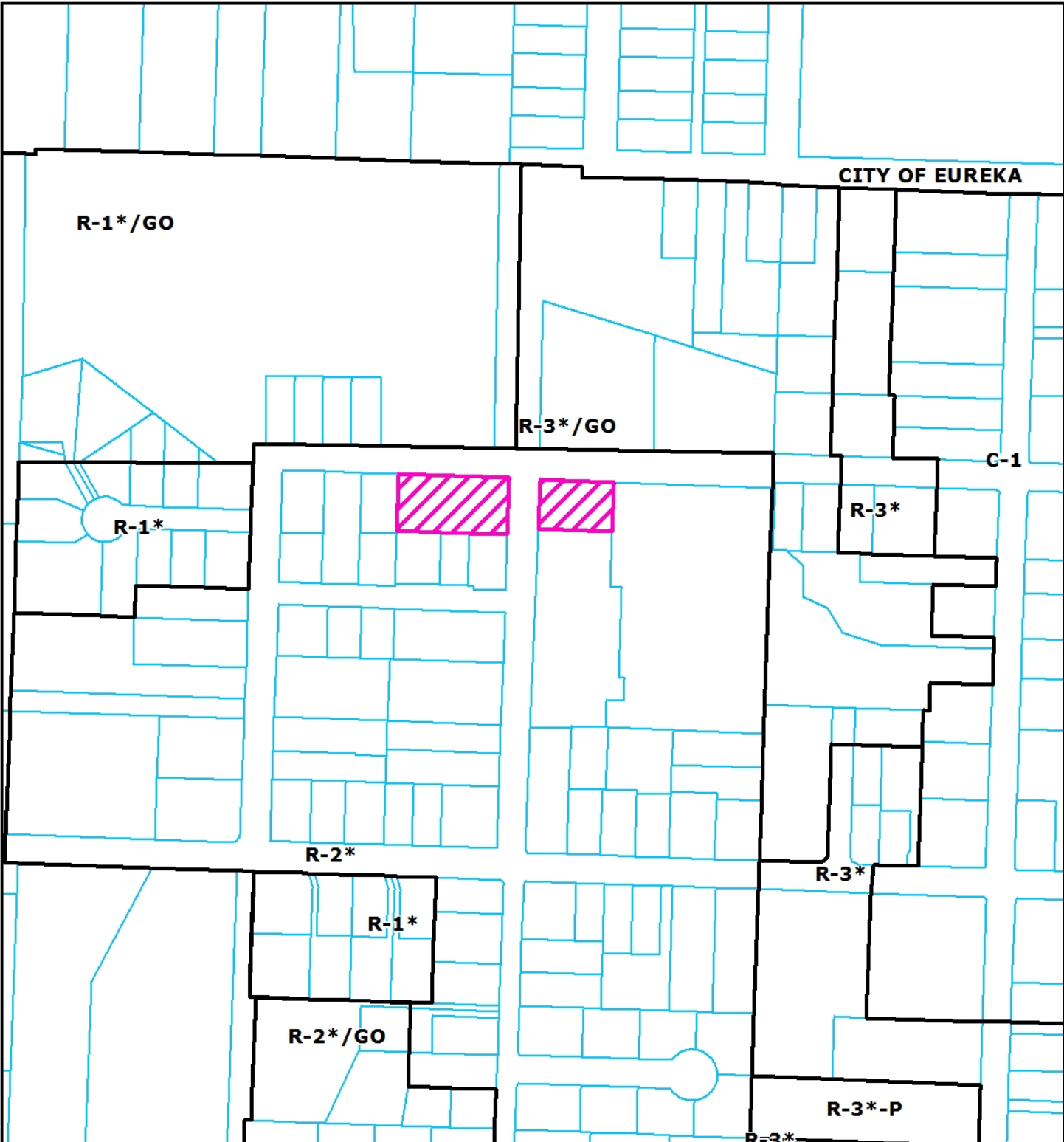
**PROPOSED HOSFORD CONSTRUCTION
FINAL MAP SUBDIVISION,
LOT LINE ADJUSTMENT &
SPECIAL PERMIT
CUTTEN AREA**

Project Area = 

**FMS-16-002/LLA-16-014/SP-16-039
APN: 018-031-020, 018-032-008
T05N R01W S35 HB&M (Eureka)**

This map is intended for display purposes and should not be used for precise measurement or navigation. Data has not been completely checked for accuracy.





CITY OF EUREKA

R-1*/GO

R-3*/GO

C-1

R-1*

R-3*

R-2*

R-3*

R-1*

R-2*/GO

R-3*-P

R-3*

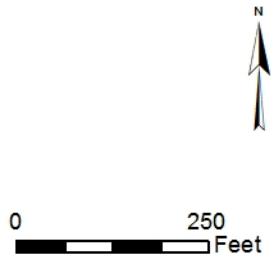
ZONING MAP

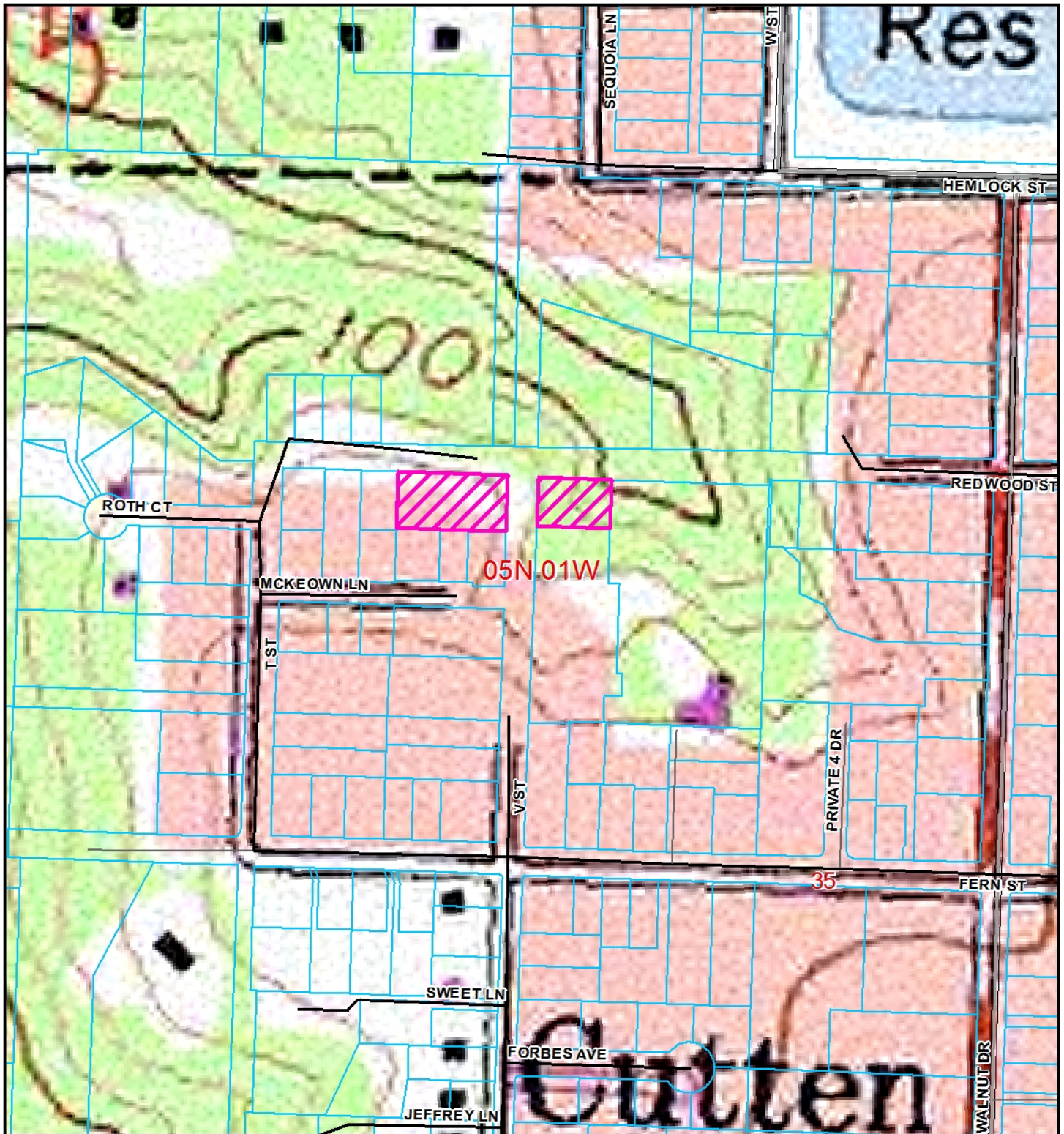
**PROPOSED HOSFORD CONSTRUCTION
FINAL MAP SUBDIVISION,
LOT LINE ADJUSTMENT &
SPECIAL PERMIT
CUTTEN AREA**

**FMS-16-002/LLA-16-014/SP-16-039
APN: 018-031-020, 018-032-008
T05N R01W S35 HB&M (Eureka)**

Project Area = 

This map is intended for display purposes and should not be used for precise measurement or navigation. Data has not been completely checked for accuracy.





TOPO MAP

**PROPOSED HOSFORD CONSTRUCTION
FINAL MAP SUBDIVISION,
LOT LINE ADJUSTMENT &
SPECIAL PERMIT
CUTTEN AREA**

**FMS-16-002/LLA-16-014/SP-16-039
APN: 018-031-020, 018-032-008
T05N R01W S35 HB&M (Eureka)**

Project Area = 

This map is intended for display purposes and should not be used for precise measurement or navigation. Data has not been completely checked for accuracy.

