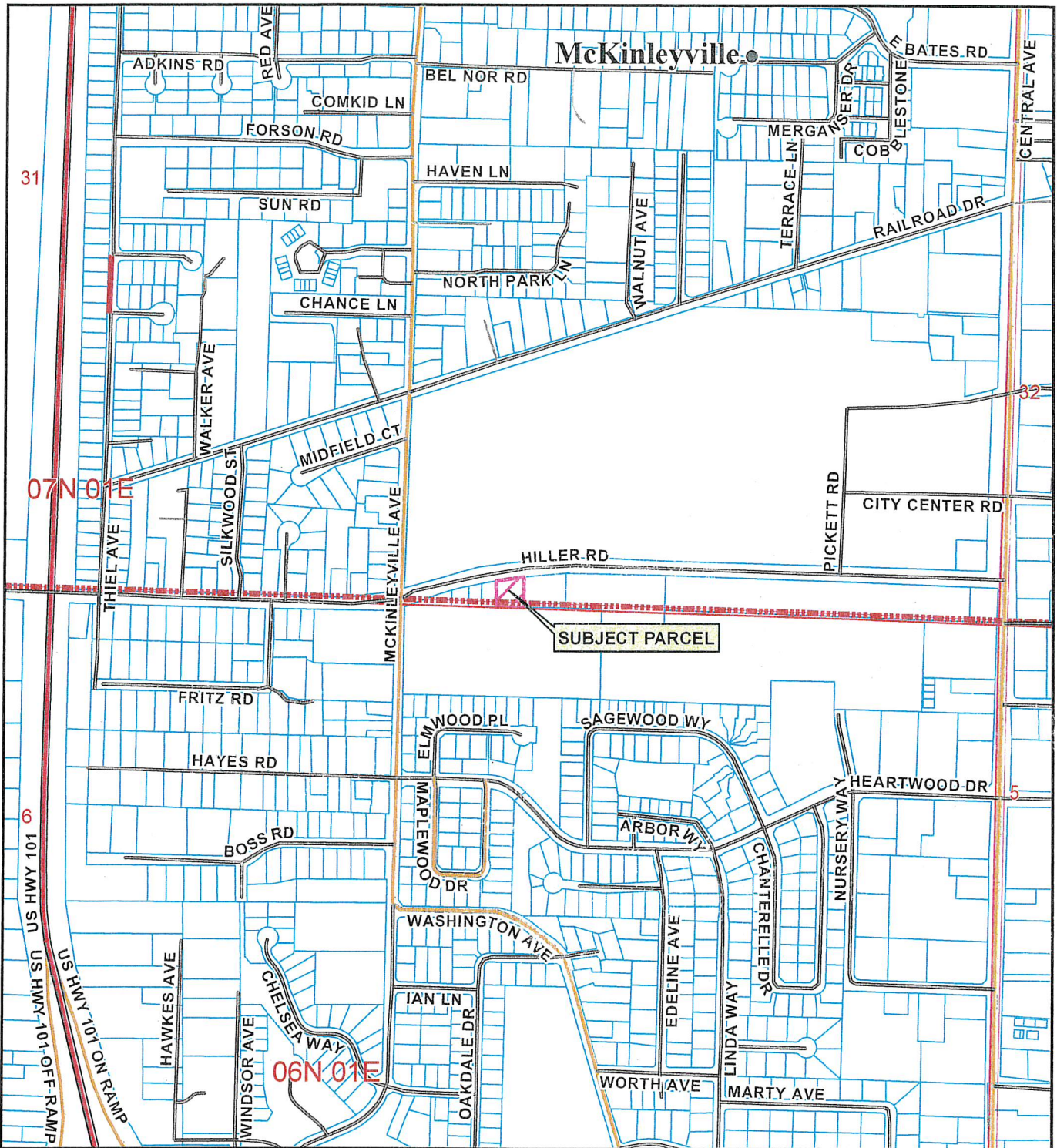


Attachment 3
Location Map/Assessor Parcel Map/Zoning Map/Aerial Map



LOCATION MAP

**PROPOSED COMBS
GENERAL PLAN PETITION
MCKINLEYVILLE AREA
GPP-18-001**

APN: 510-133-016

T07N R01E S31 HB&M (Arcata North)

Project Area = 

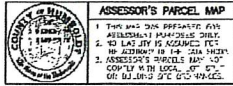
This map is intended for display purposes and should not be used for precise measurement or navigation. Data has not been completely checked for accuracy.



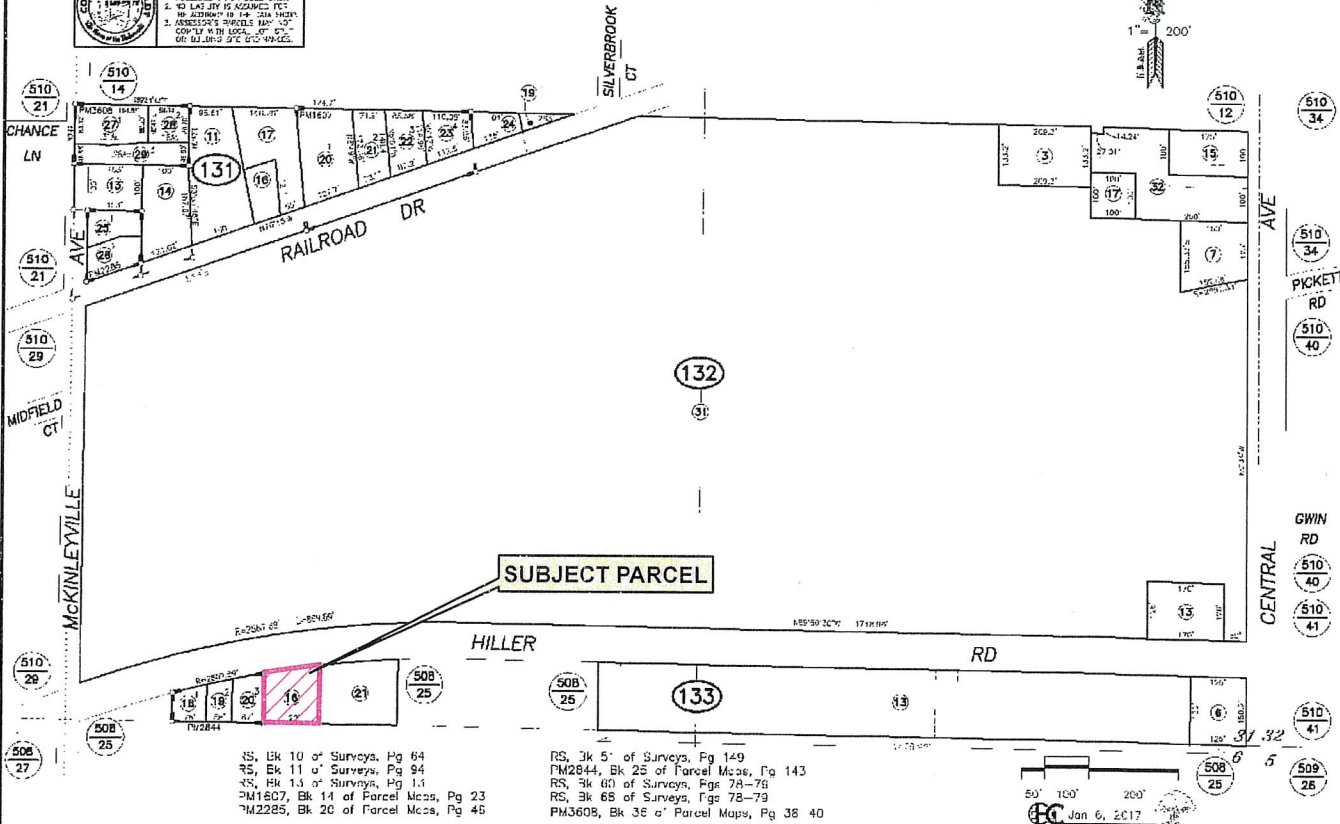
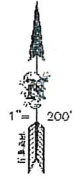
Assessor's Map Bk. 510, Pg. 13
 County of Humboldt, CA.

S1/2 OF SE1/4 SEC 31, T7N R1E, HB&M

510-13



NOTE - Assessor's Block Numbers Shown in Ellipses.
 Assessor's Parcel Numbers Shown in Small Circles



- RS, Bk 10 of Surveys, Pg 64
- RS, Bk 11 of Surveys, Pg 94
- RS, Bk 13 of Surveys, Pg 11
- PM1607, Bk 14 of Parcel Maps, Pg 23
- PM2285, Bk 20 of Parcel Maps, Pg 45
- RS, Bk 5 of Surveys, Pg 149
- PM2844, Bk 25 of Parcel Maps, Pg 143
- RS, Bk 60 of Surveys, Pgs 78-79
- RS, Bk 68 of Surveys, Pgs 78-79
- PM3608, Bk 35 of Parcel Maps, Pg 38 40

ASSESSOR PARCEL MAP

**PROPOSED COMBS
 GENERAL PLAN PETITION
 MCKINLEYVILLE AREA**

GPP-18-001

APN: 510-133-016

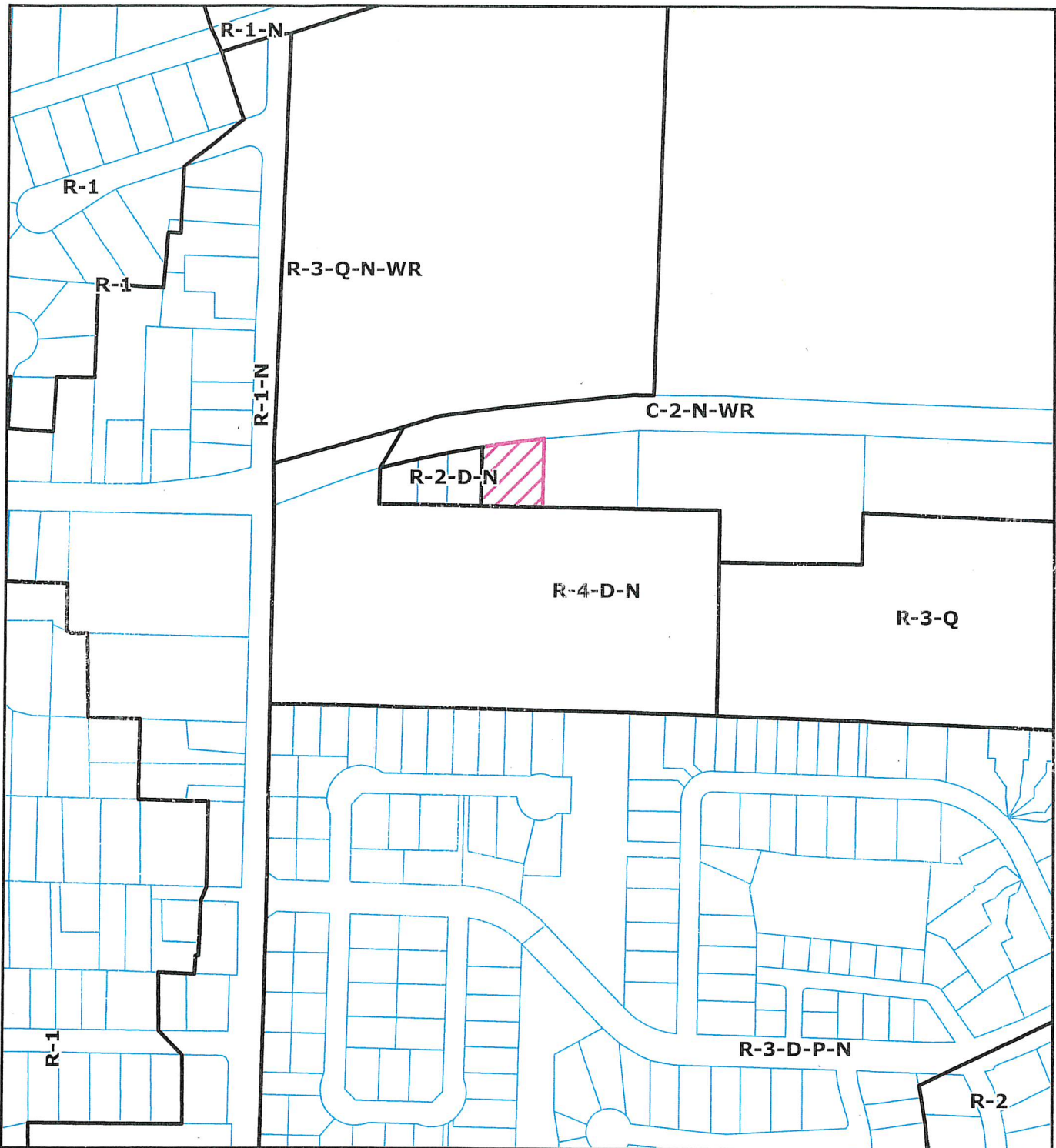
T07N R01E S31 HB&M (Arcata North)

Project Area =

This map is intended for display purposes and should not be used for precise measurement or navigation. Data has not been completely checked for accuracy.

MAP NOT TO SCALE





ZONING MAP

**PROPOSED COMBS
GENERAL PLAN PETITION
MCKINLEYVILLE AREA
GPP-18-001**

APN: 510-133-016

T07N R01E S31 HB&M (Arcata North)

Project Area = 

This map is intended for display purposes and should not be used for precise measurement or navigation. Data has not been completely checked for accuracy.





AERIAL MAP

**PROPOSED COMBS
GENERAL PLAN PETITION
MCKINLEYVILLE AREA
GPP-18-001**

APN: 510-133-016

T07N R01E S31 HB&M (Arcata North)

Project Area = 

This map is intended for display purposes and should not be used for precise measurement or navigation. Data has not been completely checked for accuracy.



0  250 Feet