

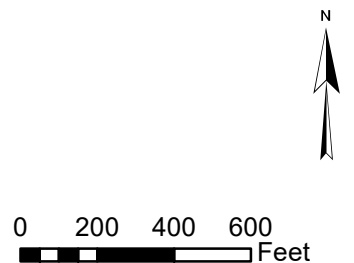
LOCATION MAP

**PROPOSED BENBOW PROPERTIES INC
GENERAL PLAN PETITION &
ZONING RECLASSIFICATION PETITION
BENBOW AREA
PLN-2020-16218**

**APN: 033-101-011 et al
T04S R04E S31 HB&M (Garberville)**

Project Area = 

This map is intended for display purposes and should not be used for precise measurement or navigation. Data has not been completely checked for accuracy.





AERIAL MAP

**PROPOSED BENBOW PROPERTIES INC
GENERAL PLAN PETITION &
ZONING RECLASSIFICATION PETITION
BENBOW AREA
PLN-2020-16218**

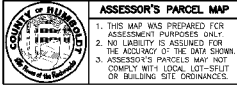
**APN: 033-101-011 et al
T04S R04E S31 HB&M (Garberville)**

Project Area = 

This map is intended for display purposes and should not be used for precise measurement or navigation. Data has not been completely checked for accuracy.



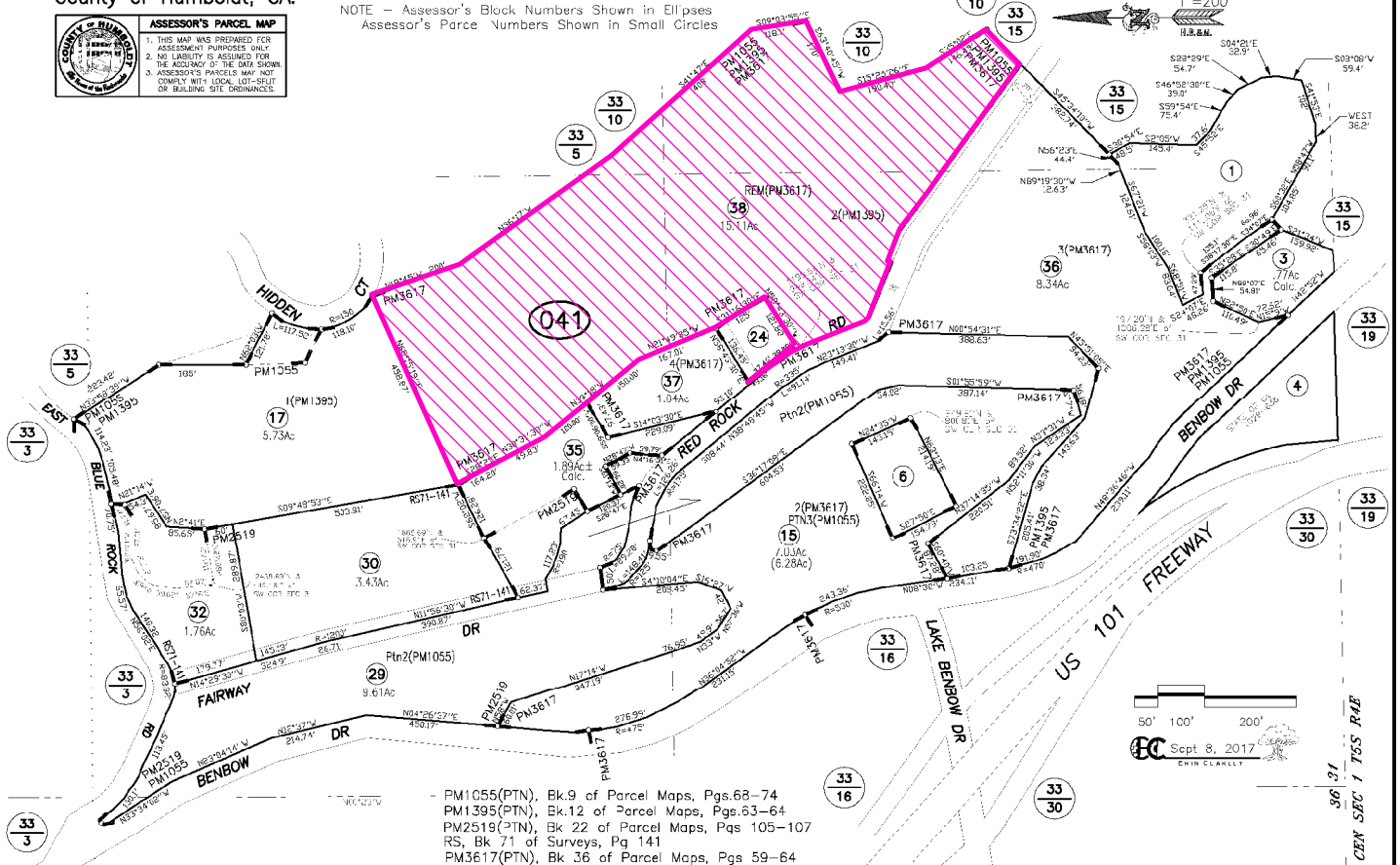
Assessor's Map Bk. 33, Pg. 4
County of Humboldt, CA.



PTN SW1/4 SEC 31, T4S R4E, HB&M

NOTE - Assessor's Block Numbers Shown in Ellipses
Assessor's Parcel Numbers Shown in Small Circles

33-04



- PM1055(PTN), Bk.9 of Parcel Maps, Pgs.68-74
- PM1395(PTN), Bk.12 of Parcel Maps, Pgs.63-64
- PM2519(PTN), Bk.22 of Parcel Maps, Pgs.105-107
- RS, Bk.71 of Surveys, Pg.141
- PM3617(PTN), Bk.36 of Parcel Maps, Pgs.59-64

ASSESSOR PARCEL MAP

**PROPOSED BENBOW PROPERTIES INC
GENERAL PLAN PETITION &
ZONING RECLASSIFICATION PETITION**

**BENBOW AREA
PLN-2020-16218**

APN: 033-101-011 et al

T04S R04E S31 HB&M (Garberville)

Project Area =

This map is intended for display purposes and should not be used for precise measurement or navigation. Data has not been completely checked for accuracy.



MAP NOT TO SCALE

POR. W 1/2 SEC. 31, T4S, R4E

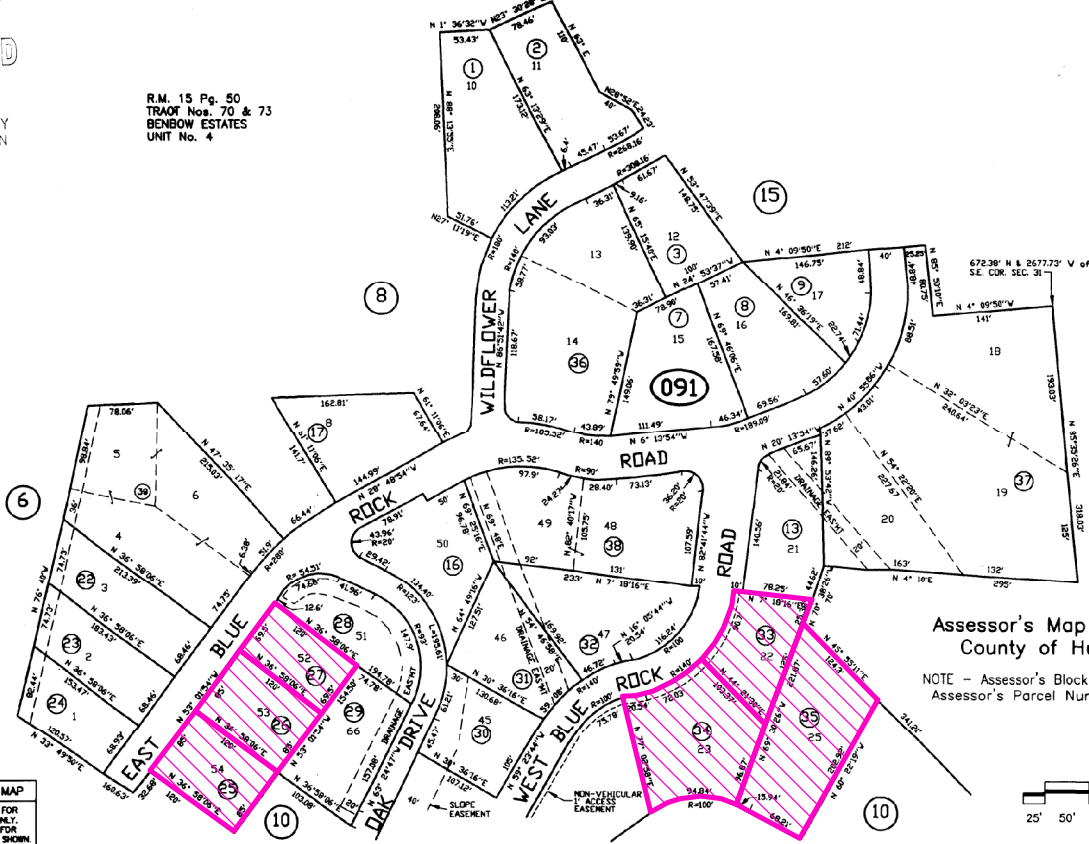
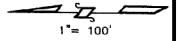
33-09

RECEIVED

MAR 26 2008

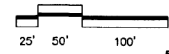
HUMBOLDT COUNTY
PLANNING DIVISION

R.M. 15 Pg. 50
TRACT Nos. 70 & 73
BENBOW ESTATES
UNIT No. 4



Assessor's Map Bk. 33, Pg.09
County of Humboldt, CA.

NOTE - Assessor's Block Numbers Shown in Ellipses
Assessor's Parcel Numbers Shown in Circles.



ASSESSOR'S PARCEL MAP
1. THIS MAP WAS PREPARED FOR ASSESSMENT PURPOSES ONLY.
2. NO LIABILITY IS ASSUMED FOR THE ACCURACY OF THE DATA SHOWN.
3. ASSESSOR'S PARCELS MAY NOT COMPLY WITH LOCAL LOT-SPLIT OR BUILDING SITE ORDINANCES.

ASSESSOR PARCEL MAP
PROPOSED BENBOW PROPERTIES INC
GENERAL PLAN PETITION &
ZONING RECLASSIFICATION PETITION
BENBOW AREA
PLN-2020-16218

Project Area = 

This map is intended for display purposes and should not be used for precise measurement or navigation. Data has not been completely checked for accuracy.

APN: 033-101-011 et al
T04S R04E S31 HB&M (Garberville)

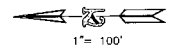
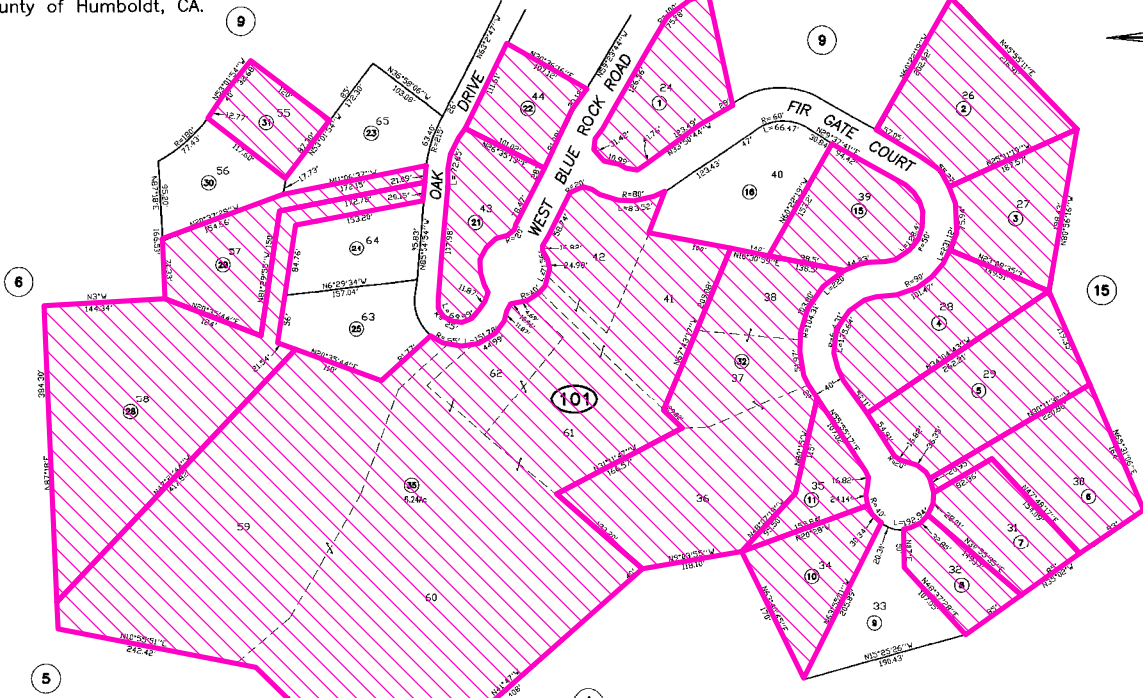


MAP NOT TO SCALE

Assessor's Map Bk. 33, Pg.10
County of Humboldt, CA.

PTN W1/2 SEC 31 T4S R4E H.B.& M. (GARBERVILLE)

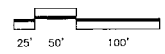
33-10



ASSESSOR'S PARCEL MAP
1. THIS MAP WAS PREPARED FOR ASSESSMENT PURPOSES ONLY.
2. NO LIABILITY IS ASSUMED FOR THE ACCURACY OF THE DATA SHOWN.
3. ASSESSOR'S PARCELS MAY NOT COMPLY WITH LOCAL LOT-SPLIT OR BUILDING SITE ORDINANCES.

Tr70, Bk 15 of MAPS, Pgs 48-50 "Benbow Estates Unit 4"
Tr70, Bk 15 of MAPS, Pgs 55-57 "Amend Benbow Estates Unit 4"
Tr73, Bk 15 of MAPS, Pgs 58-60 "2nd Amend Benbow Estates Unit 4"

NOTE - Assessor's Block Numbers Shown in Ellipses
Assessor's Parcel Numbers Shown in Small Circles



EC Jul 25, 2013

ASSESSOR PARCEL MAP

**PROPOSED BENBOW PROPERTIES INC
GENERAL PLAN PETITION &
ZONING RECLASSIFICATION PETITION
BENBOW AREA
PLN-2020-16218**

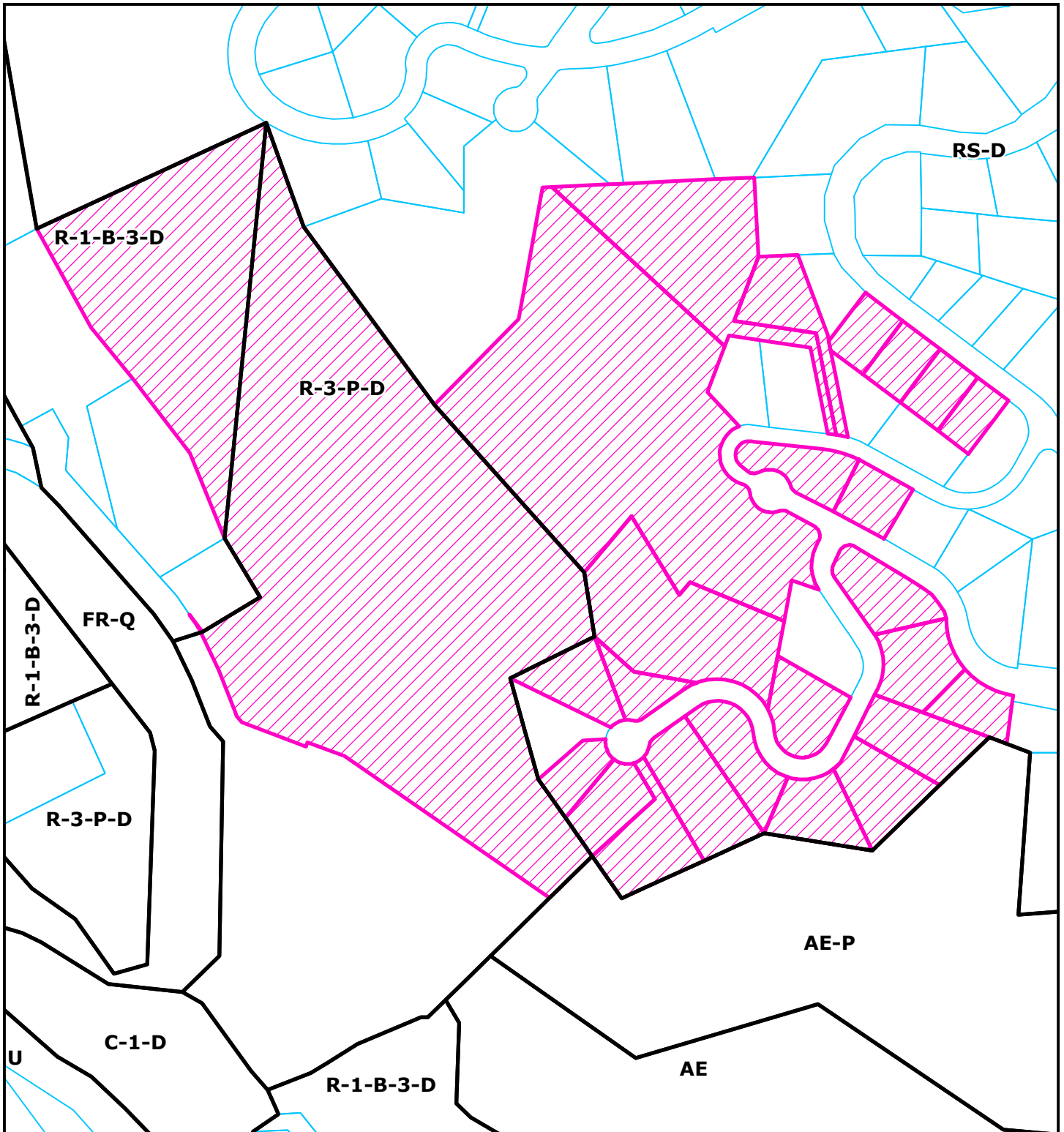
**APN: 033-101-011 et al
T04S R04E S31 HB&M (Garberville)**

Project Area = 

This map is intended for display purposes and should not be used for precise measurement or navigation. Data has not been completely checked for accuracy.



MAP NOT TO SCALE



ZONING MAP

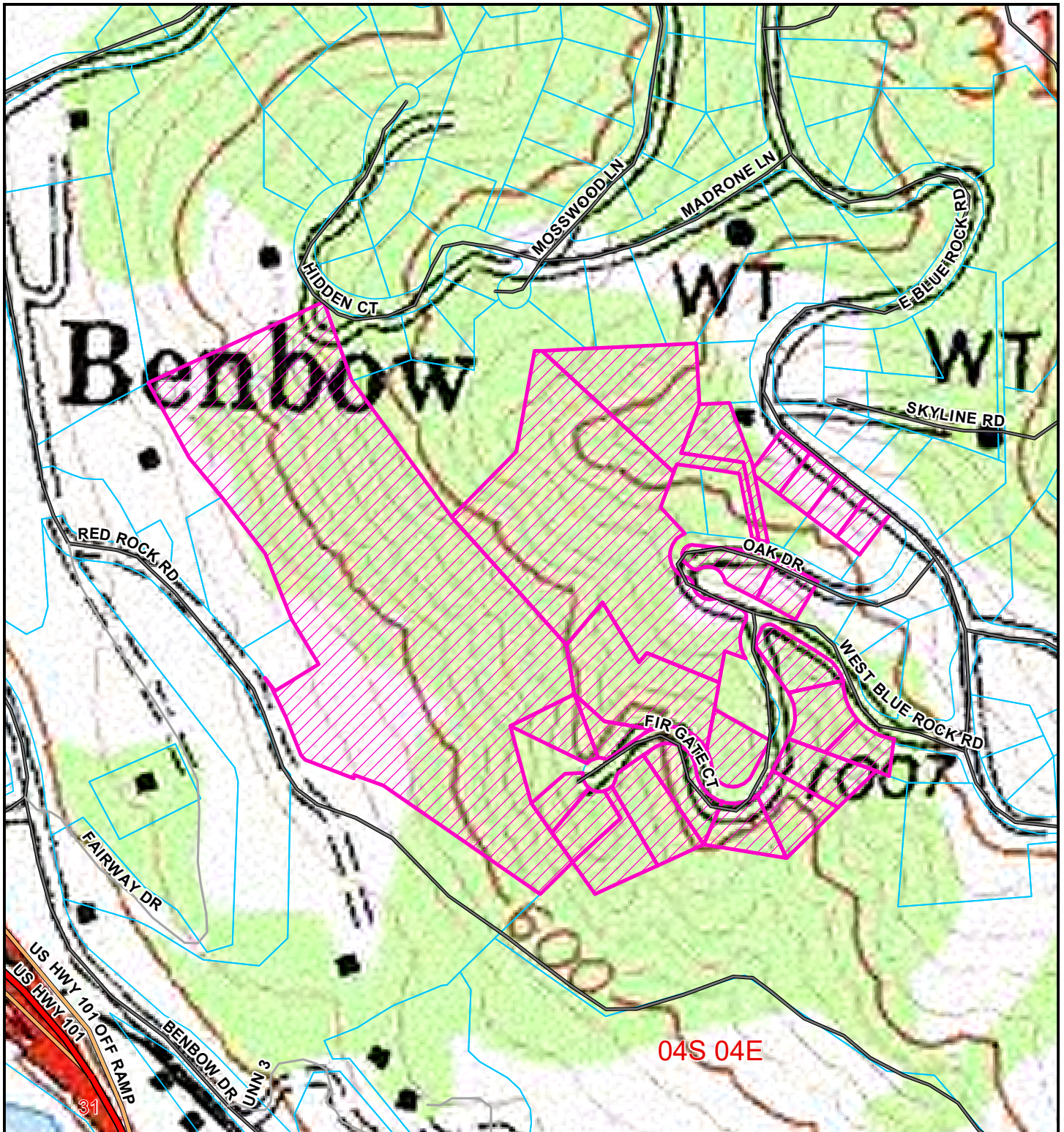
**PROPOSED BENBOW PROPERTIES INC
GENERAL PLAN PETITION &
ZONING RECLASSIFICATION PETITION
BENBOW AREA
PLN-2020-16218**

**APN: 033-101-011 et al
T04S R04E S31 HB&M (Garberville)**

Project Area = 

This map is intended for display purposes and should not be used for precise measurement or navigation. Data has not been completely checked for accuracy.





TOPO MAP


**PROPOSED BENBOW PROPERTIES INC
GENERAL PLAN PETITION &
ZONING RECLASSIFICATION PETITION
BENBOW AREA
PLN-2020-16218**

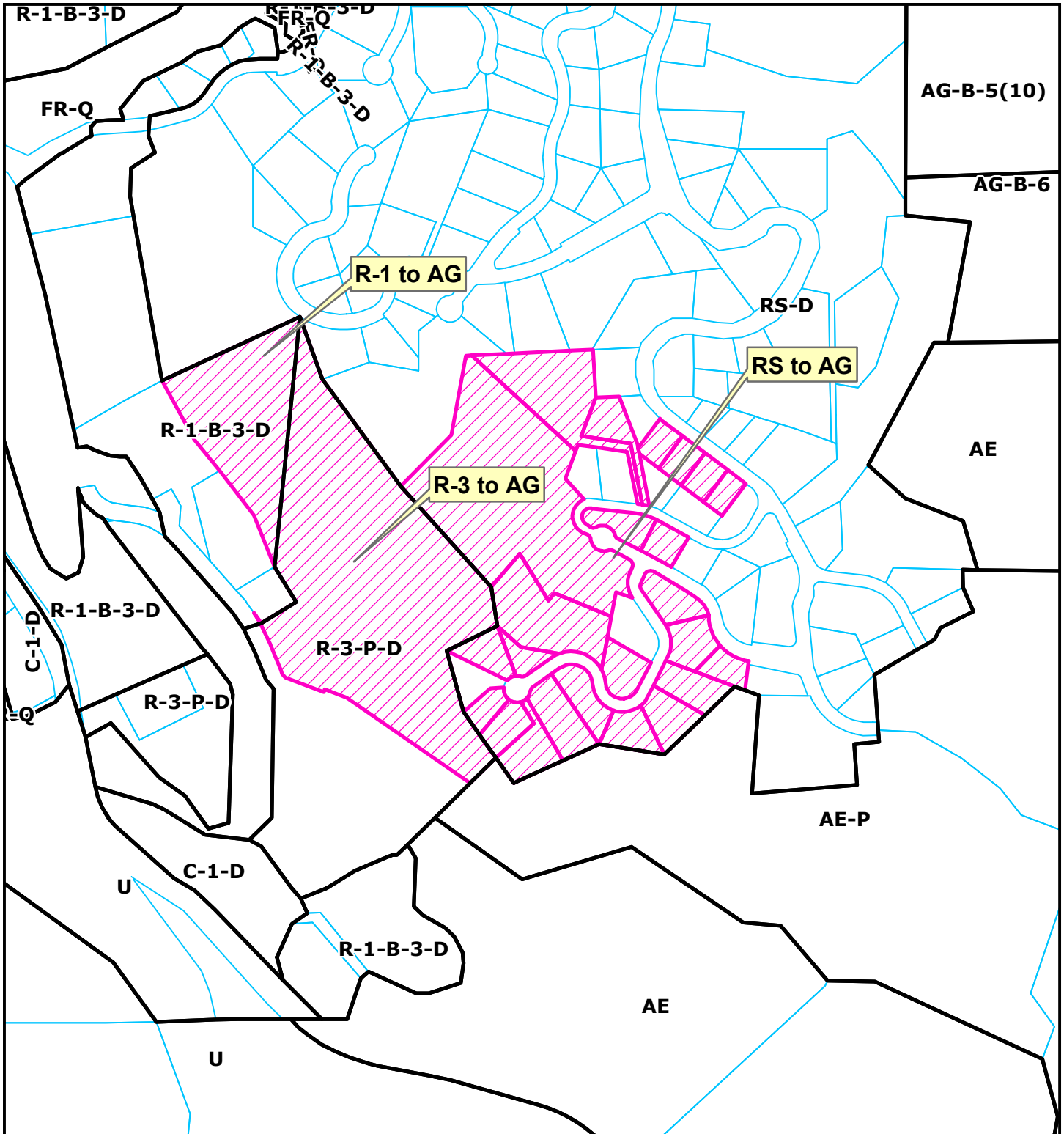
**APN: 033-101-011 et al
T04S R04E S31 HB&M (Garberville)**

Project Area = 

This map is intended for display purposes and should not be used for precise measurement or navigation. Data has not been completely checked for accuracy.



0 100 200 300 400
 Feet



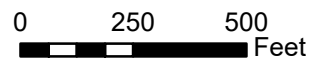
ZONING MAP DETAIL

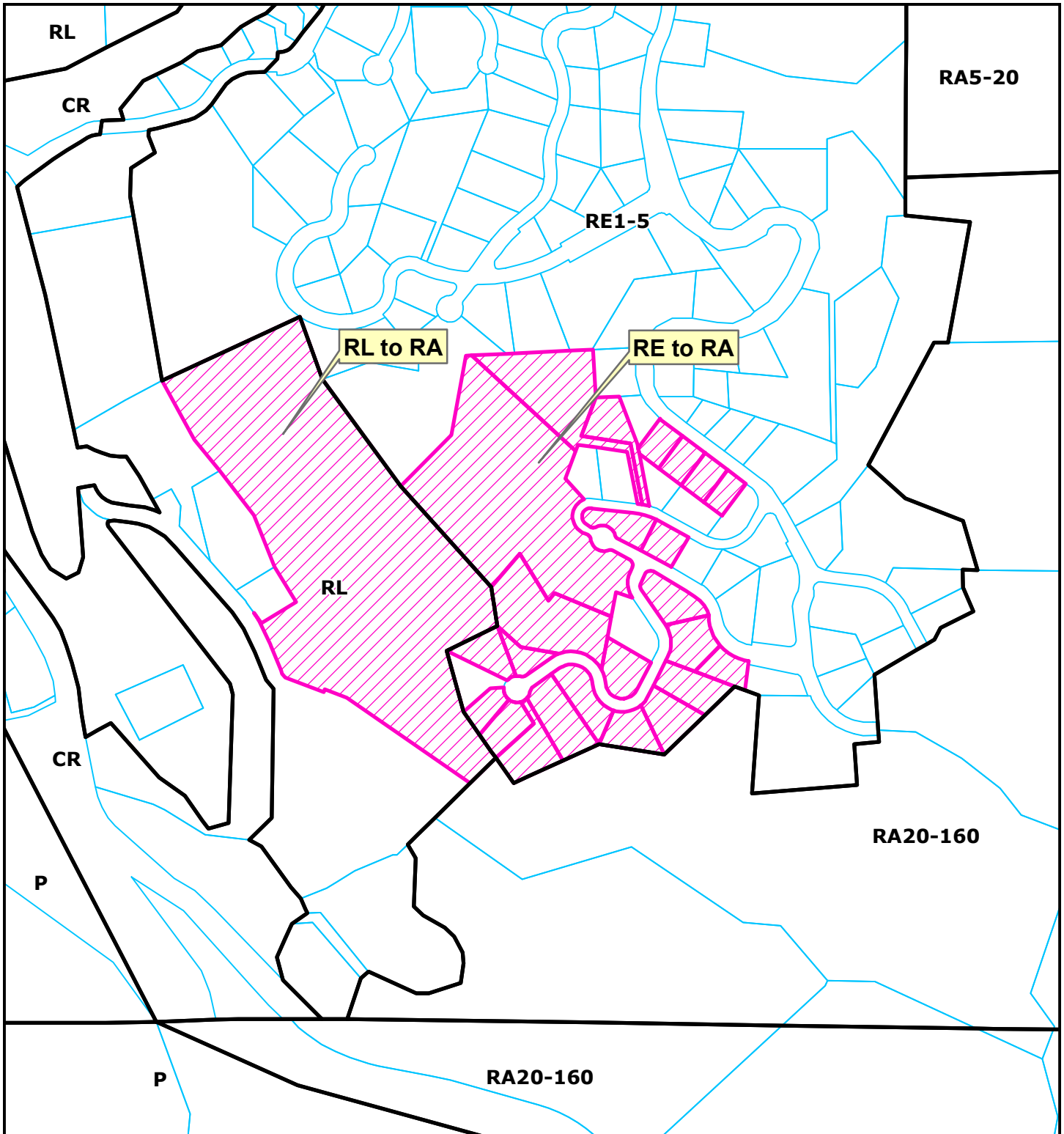
**PROPOSED BENBOW PROPERTIES INC
 GENERAL PLAN PETITION &
 ZONING RECLASSIFICATION PETITION
 BENBOW AREA
 PLN-2020-16218**

**APN: 033-101-011 et al
 T04S R04E S31 HB&M (Garberville)**

Project Area = 

This map is intended for display purposes and should not be used for precise measurement or navigation. Data has not been completely checked for accuracy.





LAND USE MAP DETAIL

**PROPOSED BENBOW PROPERTIES INC
GENERAL PLAN PETITION &
ZONING RECLASSIFICATION PETITION
BENBOW AREA**

PLN-2020-16218

APN: 033-101-011 et al

T04S R04E S31 HB&M (Garberville)

Project Area = 

This map is intended for display purposes and should not be used for precise measurement or navigation. Data has not been completely checked for accuracy.

