

# Cultivation Area Verification (CAV)

1) Enter amount of verified cultivation area.

Existing Outdoor Square Footage: 7,397

Existing Mixed Light Square Footage: 0

2) Enter base year date and source (e.g. 2014 – GIS or 10/27/15 – TerraServer or May 28, 2014 – Google Earth etc)

Base Year Date and Source: 2015 TerraServer

3) Enter person performing verification:

Verified By: KIA

4) Enter date of verification (e.g. current date)

Date Verified: 1/21

5) Attach Evidence of Verification (e.g. TerraServer photos w/ polygons etc.)

6) Write "CAV" on the outside of the project file to indicate that cultivation area verification is completed for project.

\* Does not match side plan

\* bottom greenhouse may not be on parcel

\* Wubtik says the cult. is out of Humboldt county

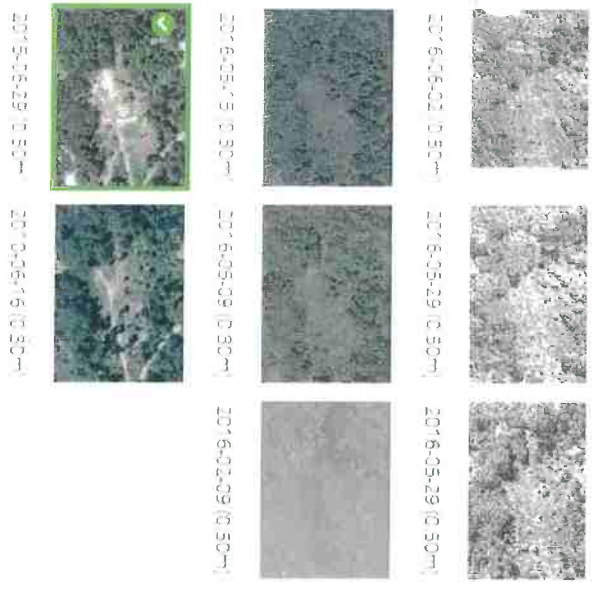


### Image Drawer

Date Range



All Images



7700  $\phi$  Veggie  
 99  $\times$  50<sup>2</sup> = 4950  $\phi$  Mound garden  
 24  $\times$  50<sup>2</sup> = 1200  $\phi$  Field 1  
 28  $\times$  50<sup>2</sup> = 1400  $\phi$  Field 2  
 60  $\times$  50<sup>2</sup> = 3000  $\phi$  Grape  
 12  $\times$  50<sup>2</sup> = 600  $\phi$  Beach overlook  
 50  $\times$  50<sup>2</sup> = 2500  $\phi$  Pond  
 40  $\times$  50<sup>2</sup> = 2000  $\phi$  River Trail  
 30  $\times$  50<sup>2</sup> = 1500  $\phi$  Spring  
                    $\phi$  Staging  
 50  $\times$  50<sup>2</sup> = 2500  $\phi$  Ted's Place  
 40  $\times$  50<sup>2</sup> = 2000  $\phi$  Clover

28,850  $\phi$  = interim permit. JD  
 12/29/17

Interim 7,400  $\phi$

Applied for 37,575  $\phi$

# OVERVIEW.



13107 revised 524.114.011

DEC 22 2017

Existing **Carina**

7700 sq ft Veggie Garden

8019 99x81' Mound Garden.

2400 24x 100' sq ft Field 1

2800 28x 100x sqft Field 2

3000 sq ft Exist. 80p x 50'A Grape Garden

972 12x 81 sq ft. Beach Overlook Garden.

3200 50x 64'A Pond Garden

2000 sq ft Exist. 40x 50'A River Trail Garden.

1920 30x 64'A Sping Garden Abandoned

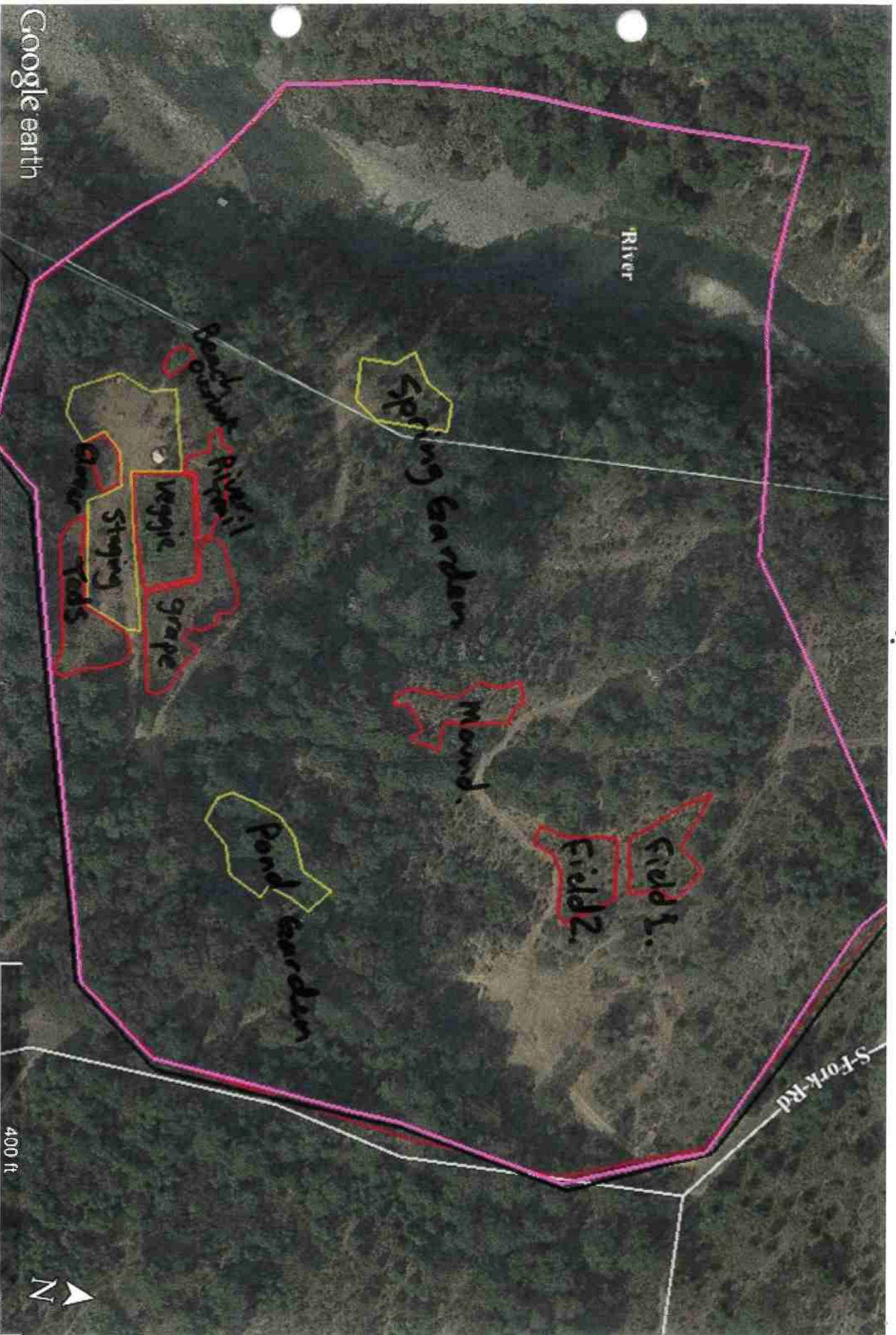
720 24x 30 Staging and Seasonal Nursery

4,050 50x 81' sq ft Exist. Ted's Place Garden.

2000 40x 50'A ft Clover Garden.

38,781

# OVERVIEW ID



Google earth

River

Spring garden

Mound

Fields 1.  
Fields 2.

Pond garden

Beachfront  
Apple  
vegie  
grape  
Stinging  
elder  
toads

S-Fork-Rd

400 ft



*Veggie Garden: mixed use 7500 sq ft*



Google earth

70 ft



Mound

99x81' = 4050



Google earth

90 ft





Field Gardens: 52 plants x 100 sq Ft = 5,200



Google earth

Grape Garden 60 plants x 50'² = 3,000



Google earth

90 ft

N

Buck Overlook Garden

12 x 81 sq ft = 972 sq ft.



Google earth

40 ft



Pond Garden

50x64 ft = 3,200 sq ft

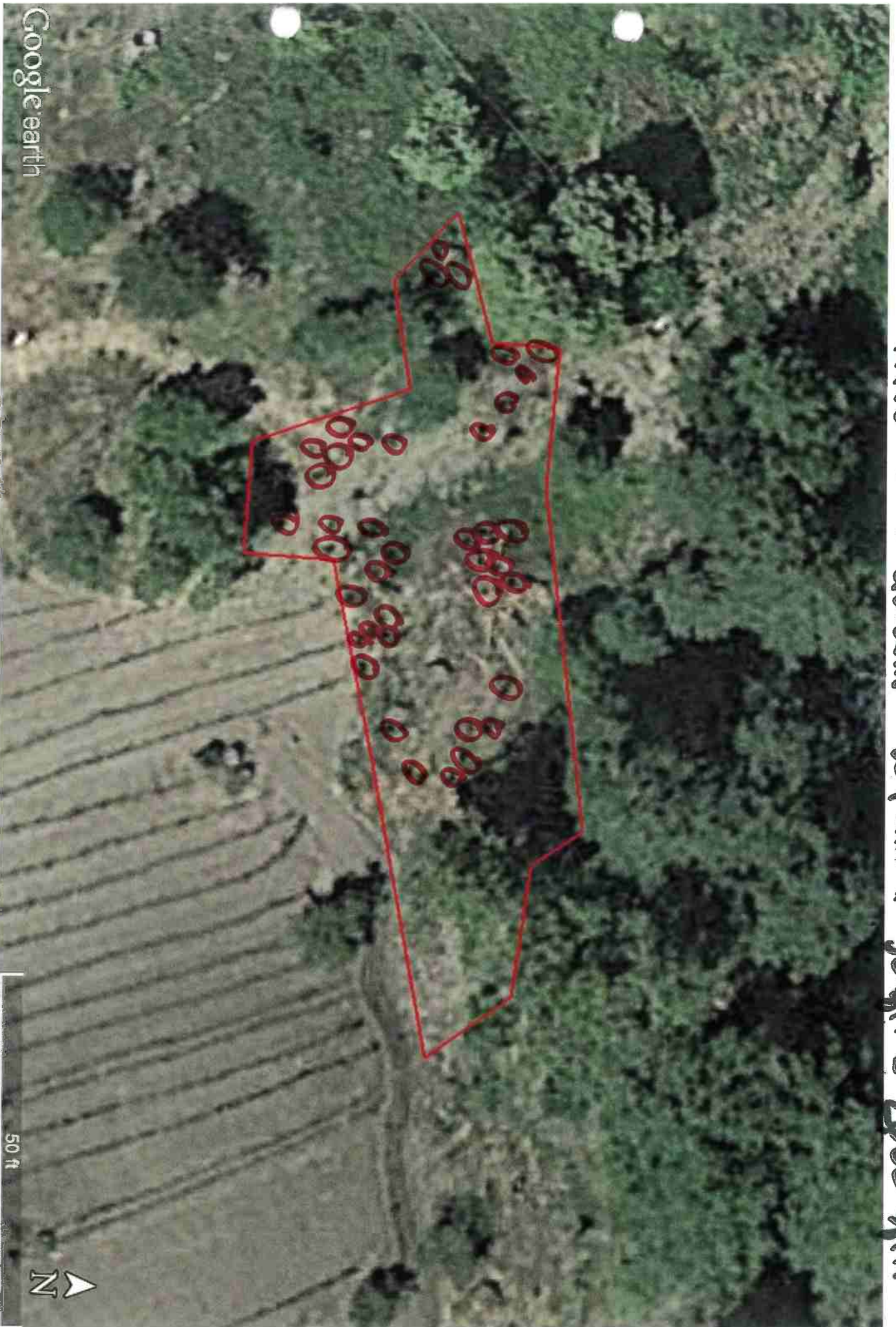


Google earth

90 ft



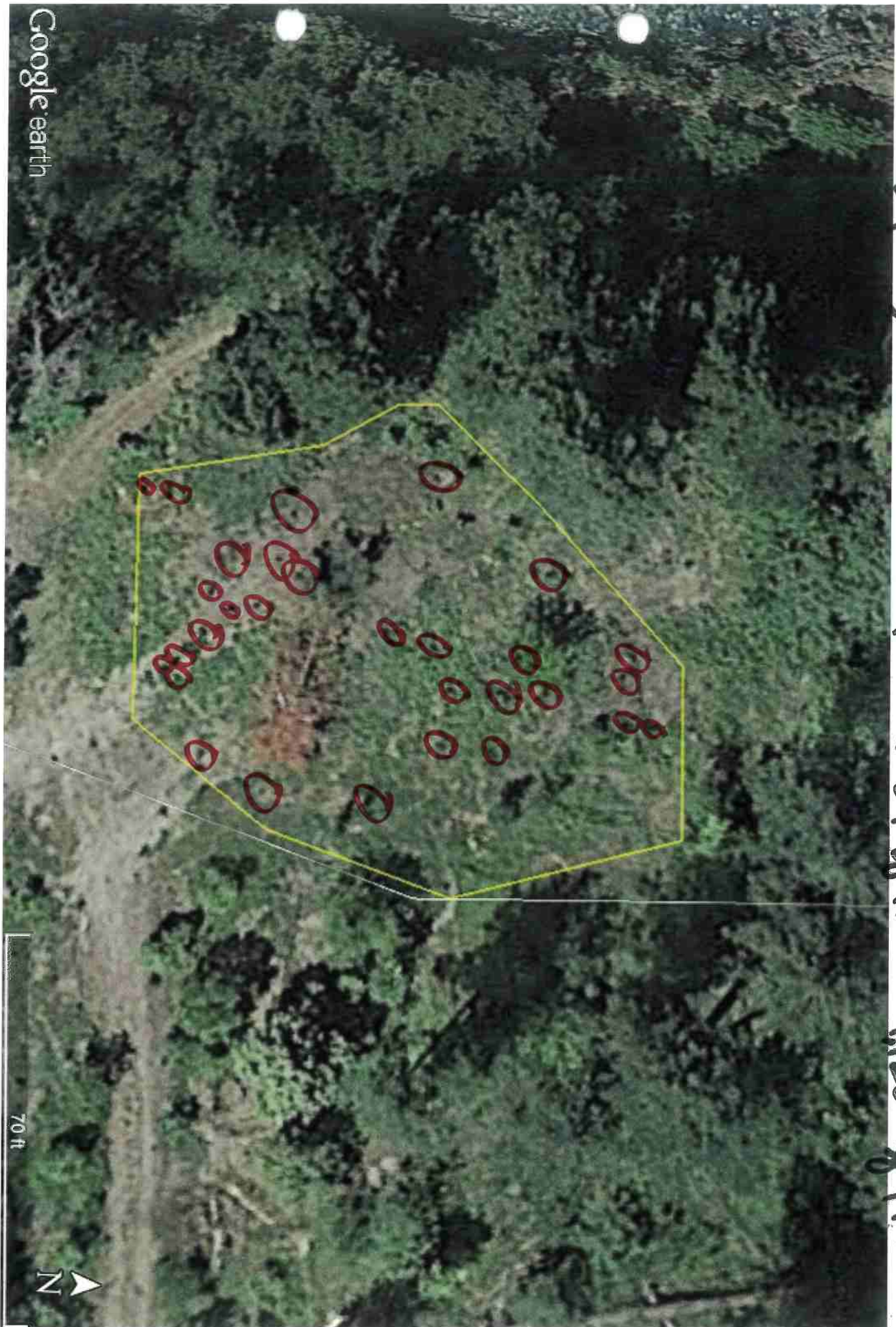
River Trail Garden: 40 plants x 50 sqft = 2000 sqft.



50 ft



Spring Garden: 30 plants x 64 sq ft = 1920 sq ft.



Google earth

70 ft



Staging & Nursery 24 plants x 30 ft = 720 sq ft.



Google earth

90 ft



Teds Plaza Garden · 50 plants x 81 sq ft = 4058



Google earth

70 ft





Clower Garden 40 plants x 50 sq ft

= 2000 sq ft

