

COUNTY OF HUMBOLDT

ADA MODIFICATIONS

COUNTY PROJECT No.: 2017-203



COUNTY OF HUMBOLDT
 ADA MODIFICATIONS

PROJECT DESCRIPTION

FRESHWATER PARK :

PLAYGROUND:

- PROVIDE ACCESS TO AND WITHIN PLAYGROUND TO EQUIPMENT.
- INSTALL NEW ACCESSIBLE ROUTE TO PLAYGROUND.

LOWER PICNIC AREA:

- PROVIDE ACCESSIBLE PICNIC TABLE IN LOWER PICNIC AREA BY PLAYGROUND ENTRANCE.
- INSTALL NEW PICNIC TABLE WITH AN ACCESSIBLE ROUTE

BBQ GRILL STAND LOWER AREA:

- PROVIDE ACCESS TO BBQ OR ADDITIONAL BBQ GRILL WITH ACCESS AT LOWER COVERED PICNIC AREA.
- REMOVE PORTIONS OF SOIL, RESHAPE SURROUNDING SOILS, INSTALL NEW CONCRETE PAD.
- INSTALL NEW POST MOUNTED BBQ GRILL.

VOLLEYBALL COURT ACCESS:

- PROVIDE HARD SURFACE FROM PARKING AREA TO COURT SIDE.
- INSTALL FIRM AND STABLE SURFACE FOR ACCESS ROUTE TO VOLLEYBALL COURT.
- PROVIDE AN ADA ACCESSIBLE PARKING SPACE AND ACCESSIBLE AISLE.
- PROVIDE ACCESSIBLE DRINKING FOUNTAIN AT ACCESS ROUTE.

PAVILION DRINKING FOUNTAIN:

- PROVIDE ACCESSIBLE DRINKING FOUNTAIN AND NEW WATER SPIGOT AT UPPER PAVILION AREA.
- INSTALL NEW HIGH/LOW DRINKING FOUNTAIN IN LIEU OF EXISTING SPIGOT.

PAVILION SINK AND COUNTER:

- PROVIDE ACCESSIBILITY TO EXISTING SINK AND COUNTER IN UPPER PAVILION.
- REWORK EXISTING SUPPORTS AND LOWER EXISTING SINK AND COUNTER FOR ADA ACCESSIBILITY.

TOILET ROOM SINKS:

- PROVIDE ADA ACCESSIBILITY TO EXISTING SINKS (FOR BOTH LOWER AND UPPER RESTROOMS).
- ADJUST EXISTING SINK CONTROLS (UPPER RESTROOMS) TO MEET ADA REQUIREMENTS.
- REMOVE AND PROVIDE NEW SINKS/FAUCETS (LOWER RESTROOMS) TO MEET ADA REQUIREMENTS.

UPPER PICNIC AREA:

- PROVIDE ACCESSIBLE PICNIC TABLE IN UPPER PICNIC AREA BY PAVILION.
- INSTALL NEW PICNIC TABLE WITH AN ACCESSIBLE ROUTE.

UPPER CREEK PICNIC AREA AND LOWER PLAY AREA DRINKING FOUNTAINS:

- PROVIDE ACCESSIBLE DRINKING FOUNTAINS, ACCESSIBLE LANDING AND ROUTE.
- DEMOLISH AND CONSTRUCT NEW LEVEL LANDING OR RELOCATE FOUNTAINS.

ABBREVIATIONS:

(E)	EXISTING
(N)	NEW
CBC	CALIFORNIA BUILDING CODE
HT.	HEIGHT
MAX.	MAXIMUM
MIN.	MINIMUM
PREP.	PREPARE
W/	WITH
FT.	FEET
IN.	INCHES
∅	DIAMETER
⊙	AT
&	AND
SF.	SQUARE FEET
REQ.	REQUIRED

SHEET INDEX:

G001	COVER SHEET, SHEET INDEX
CD100	EXISTING PARTIAL SITE PLAN AND ENLARGEMENTS
CD101	EXISTING TOILET FLOOR PLANS AND PHOTOS
C100	SITE PLAN AND ENLARGED PLANS
C101	ENLARGED SITE PLAN
C501	ENLARGED PLANS AND DETAILS

Revisions:

Client Number: 2017-204
 Project Number: 652.03
 Date: SEPT. 14, 2018

Sheet Title:

COVER SHEET

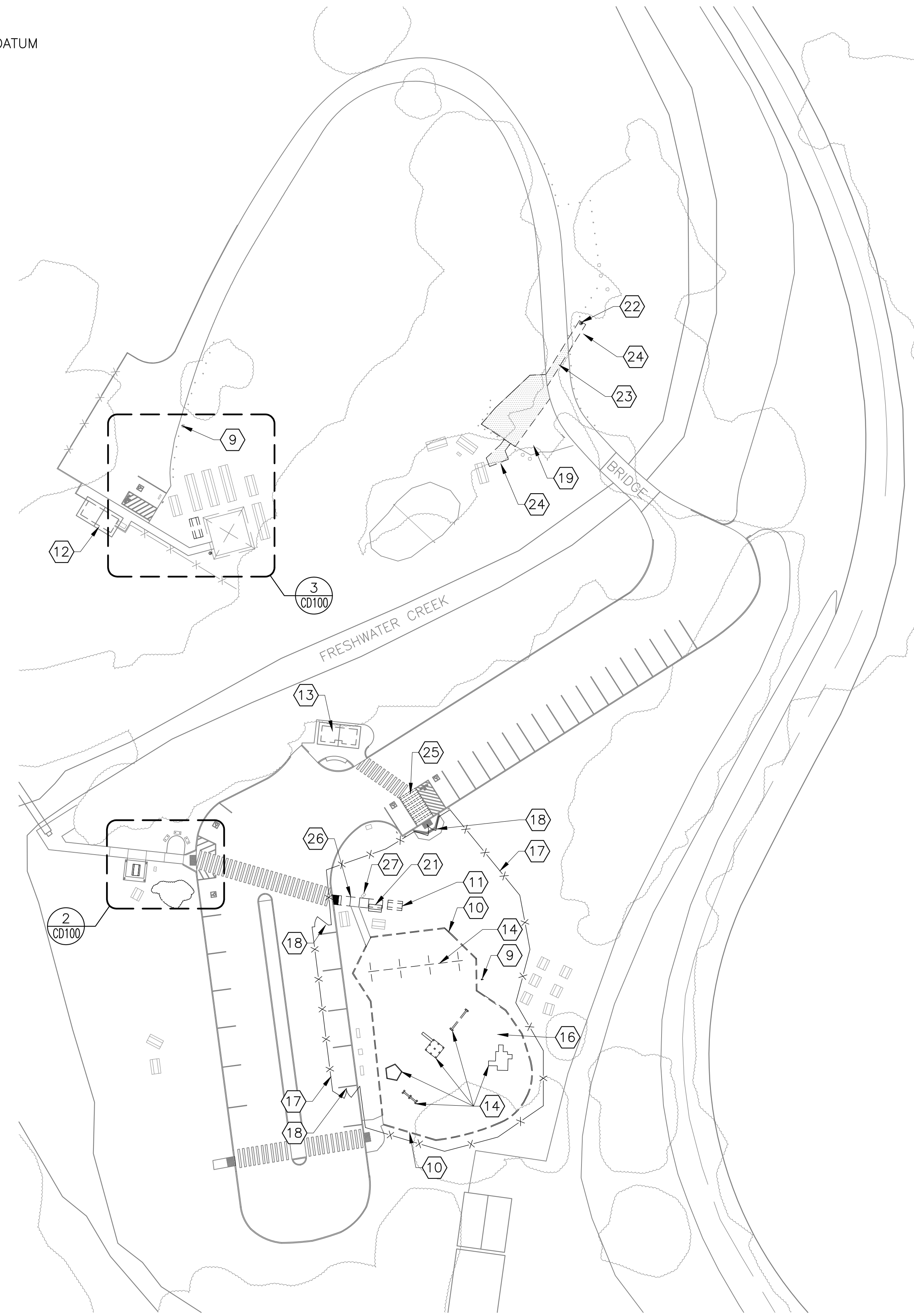
Sheet Number:

G001

FRESHWATER PARK

KEY NOTES:

- ① EXISTING BBQ ASSEMBLY
- ② EXISTING FIXED TABLE
- ③ EXISTING SIGNAGE
- ④ EXISTING SHELTER
- ⑤ EXISTING CONCRETE CURB AND ACCESSIBLE RAMP
- ⑥ EXISTING SIDEWALK
- ⑦ REMOVE EXISTING STAINLESS STEEL COUNTER AND SINK, SALVAGE FOR RE-INSTALL. SEE PHOTOS 8, 9 & 10/CD101
- ⑧ EXISTING LOWER TOILET FACILITY, SEE PLAN 2/CD101 FOR SCOPE OF WORK
- ⑨ REMOVE EXISTING WATER SPIGOT, WATER PIPE TO REMAIN FOR CONNECTION TO NEW DRINKING FOUNTAIN AND NEW WATER SPIGOT, SEE PHOTO 9/CD101.
- ⑩ REMOVE EXISTING LANDSCAPE DIVIDER/CURB
- ⑪ RELOCATE EXISTING PICNIC TABLE, SEE SHEET C100 FOR NEW LOCATION
- ⑫ EXISTING UPPER TOILET FACILITY, SEE DEMOLITION PLAN 1/CD101 FOR SCOPE OF WORK
- ⑬ EXISTING LOWER TOILET FACILITY, SEE DEMOLITION PLAN 2/CD101 FOR SCOPE OF WORK
- ⑭ REMOVE EXISTING PLAYGROUND EQUIPMENT AND TURN-OVER/SALVAGE TO COUNTY.
- ⑮ EXISTING ACCESSIBLE PARKING STALL
- ⑯ REMOVE EXISTING PLAYGROUND SAND AS REQUIRED AND SUB-GRADE TO INSTALL NEW PLAYGROUND SURFACE.
- ⑰ INSTALL 6'-0" MINIMUM HEIGHT TEMPORARY CONSTRUCTION FENCE AROUND PERIMETER OF WORK AREA.
- ⑱ (2) 15'-0" WIDE 6'-0" HT. MIN. SWING GATES IN TEMPORARY CONSTRUCTION FENCE.
- ⑲ EXCAVATE PORTION OF EXISTING GRAVEL PARKING AREA (APPROX. 435 SF) TO ACCOMMODATE NEW ASPHALT PARKING SPACE AND ACCESSIBLE ISLE. SEE 5/C501.
- ⑳ REMOVE EXISTING PICNIC TABLE.
- ㉑ REMOVE EXISTING ADA PICNIC TABLE AND CONCRETE SLAB BELOW. SEE PHOTO 7/CD101.
- ㉒ REMOVE EXISTING WATER SPIGOT AND SURROUND, CAP WATER PIPE BELOW GRADE. SEE PHOTOS 11 AND 13/CD101.
- ㉓ EXCAVATE PORTION OF EXISTING ASPHALT ROAD TO INSTALL NEW WATER SUPPLY. SEE PLAN DETAIL 5/C501.
- ㉔ EXCAVATE PORTION OF EXISTING LANDSCAPING TO INSTALL NEW WATER SUPPLY. SEE PLAN DETAIL 5/C501.
- ㉕ BLACK OUT EXISTING PAINTED STRIPING ADJACENT TO ACCESS AISLE STRIPING. SEE PHOTO 15/CD101.
- ㉖ REMOVE EXISTING CONCRETE WALKWAY, (INCLUDES EXISTING TRUNCATED DOMES). EXISTING CURB TO REMAIN. SEE PHOTO 14/CD101.
- ㉗ EXISTING GRILLE TO REMAIN.
- ㉘ (1) 8'-0" WIDE 6'-0" HT. MIN. SWING GATE IN TEMPORARY CONSTRUCTION FENCE.
- ㉙ DATUM POINT FOR ELEVATION REFERENCE DEFINED AS 100'-0"
- ㉚ EXISTING WATER SPIGOT TO REMAIN

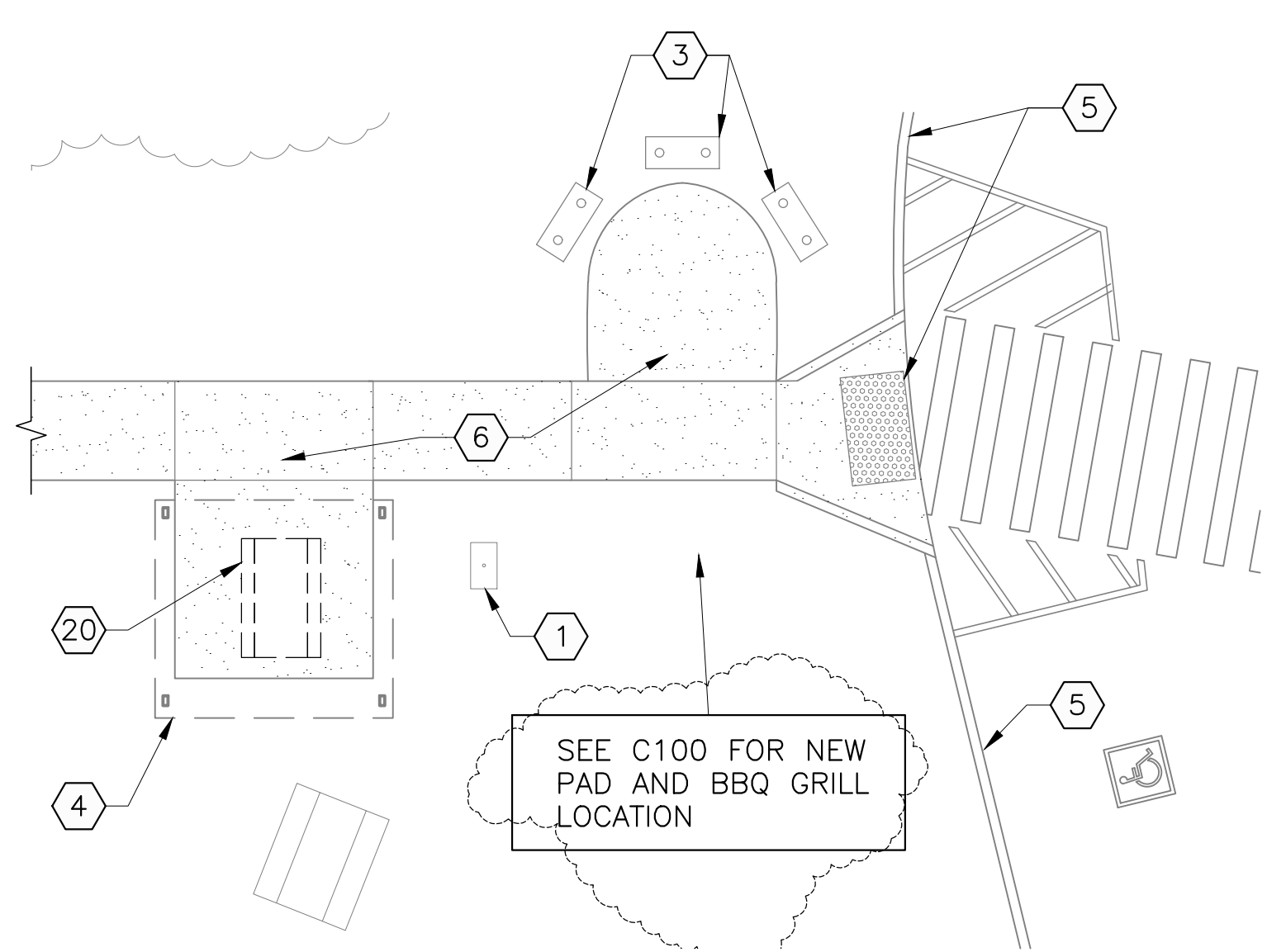


NORTH
 ① EXISTING SITE PLAN
 1" = 40'
 0 20 40 80

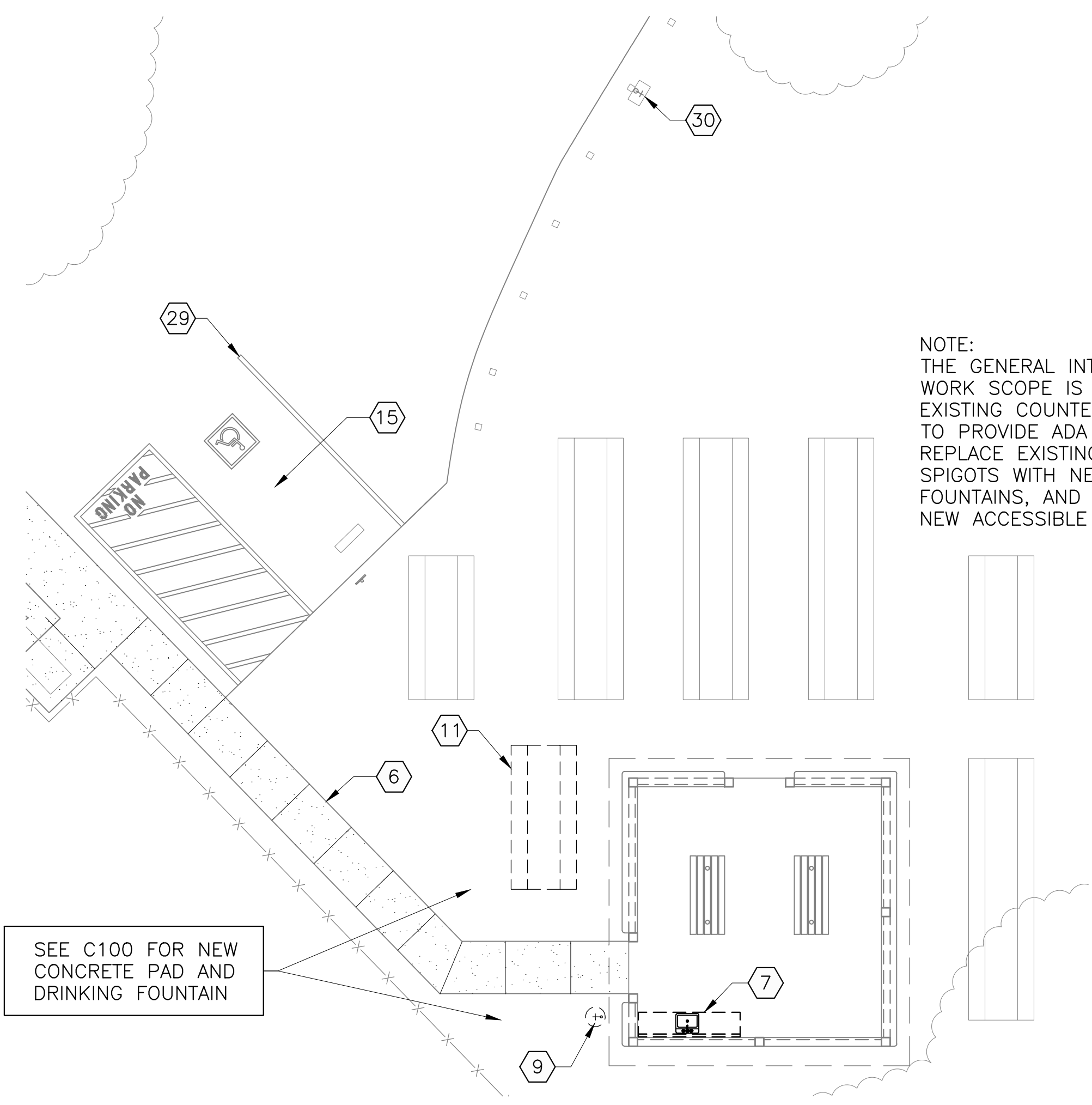
NOTE:
 THE GENERAL INTENT OF THIS WORK SCOPE IS TO INSTALL A NEW BBQ ASSEMBLY AND 5" THICK CONCRETE SIDEWALK EXTENSION.

NOTE:
 DETAIL 2 DATUM POINT - USE SAME DATUM POINT FROM DETAIL 1/C101

NOTE:
 THE GENERAL INTENT OF THIS WORK SCOPE IS TO LOWER EXISTING COUNTER AND SINK TO PROVIDE ADA ACCESSIBILITY, REPLACE EXISTING WATER SPIGOTS WITH NEW DRINKING FOUNTAINS, AND PROVIDE A NEW ACCESSIBLE TABLE.

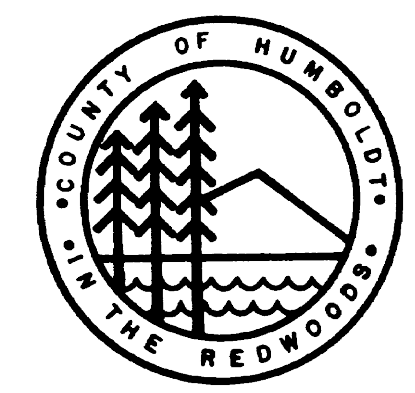


PLAN NORTH
 ② PARTIAL PLAN • BBQ GRILL STAND
 1/8" = 1'-0"
 0 4' 8' 16'



PLAN NORTH
 ③ PARTIAL PLAN • PAVILION
 1/8" = 1'-0"
 0 4' 8' 16'

FRESHWATER PARK



**COUNTY OF HUMBOLDT
 ADA MODIFICATIONS**

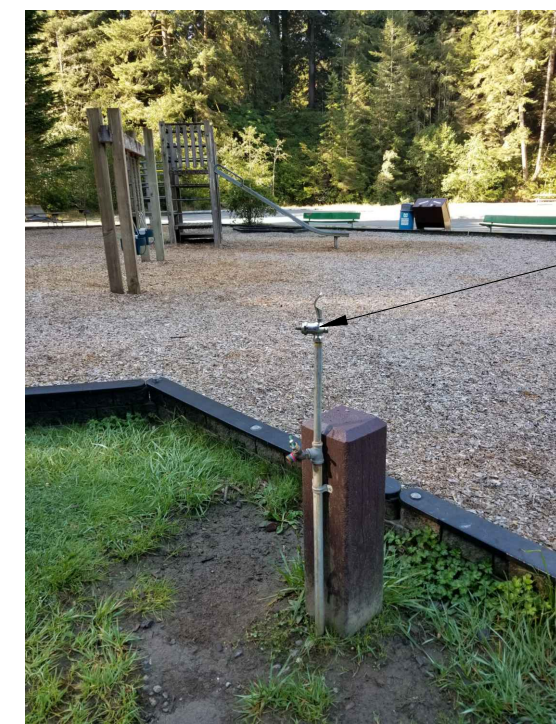
Revisions:

Client Number: 207-204
 Project Number: 65203
 Date: SEPT. 14, 2018

Sheet Title:
**EXISTING SITE PLAN
 AND ENLARGED
 PLANS**

Sheet Number:

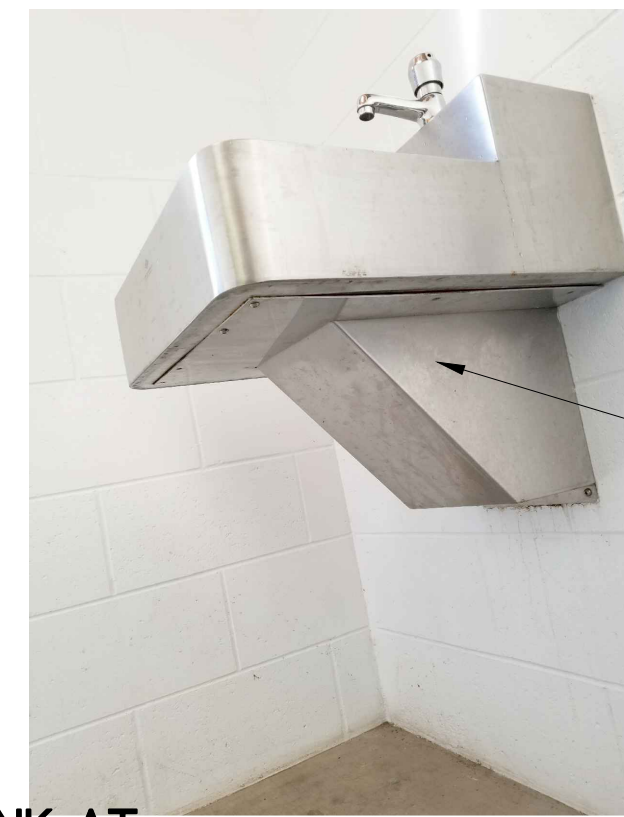
CD100



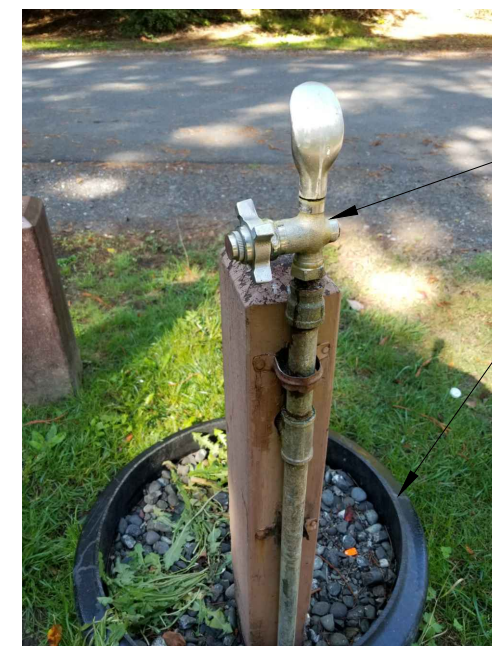
12 WATER SPIGOT AT PLAYGROUND



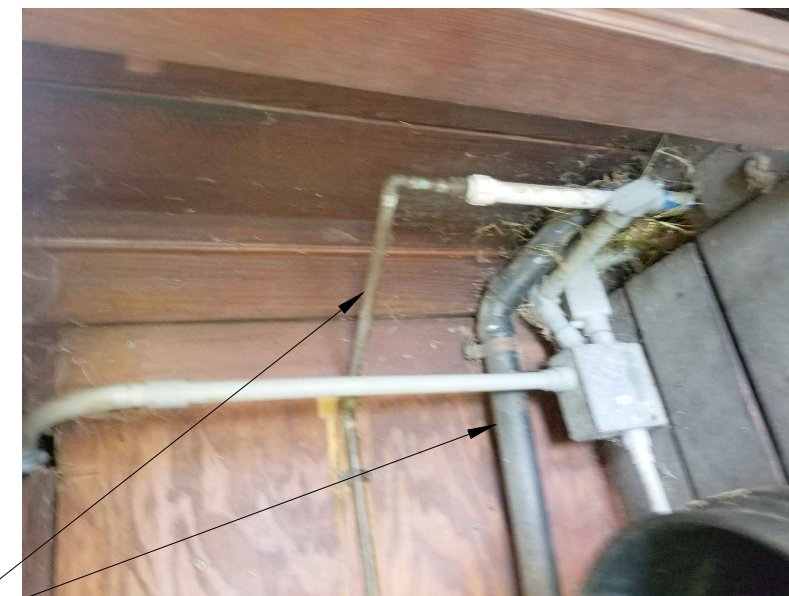
8 SINK/COUNTER AT UPPER PAVILION



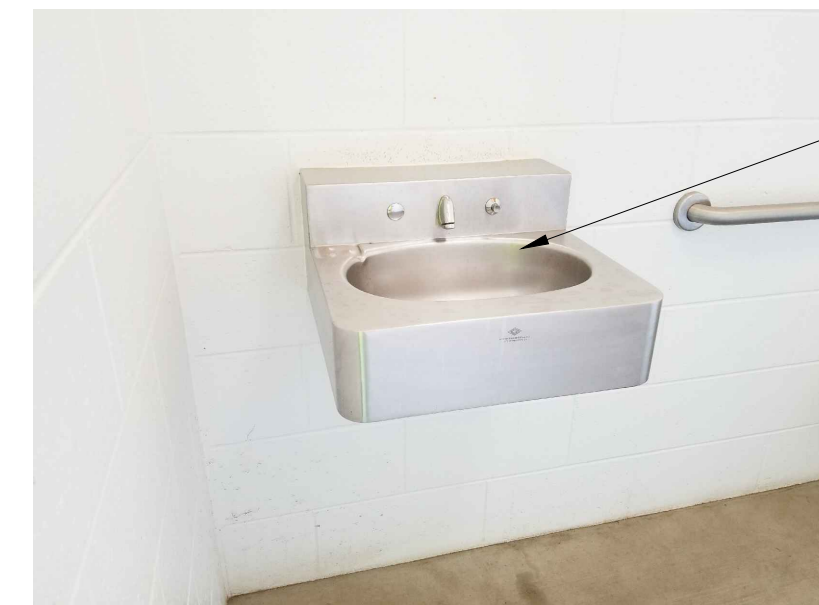
4 SINK AT LOWER RESTROOM FACILITY



13 WATER SPIGOT ACROSS FROM VOLLEYBALL COURTS



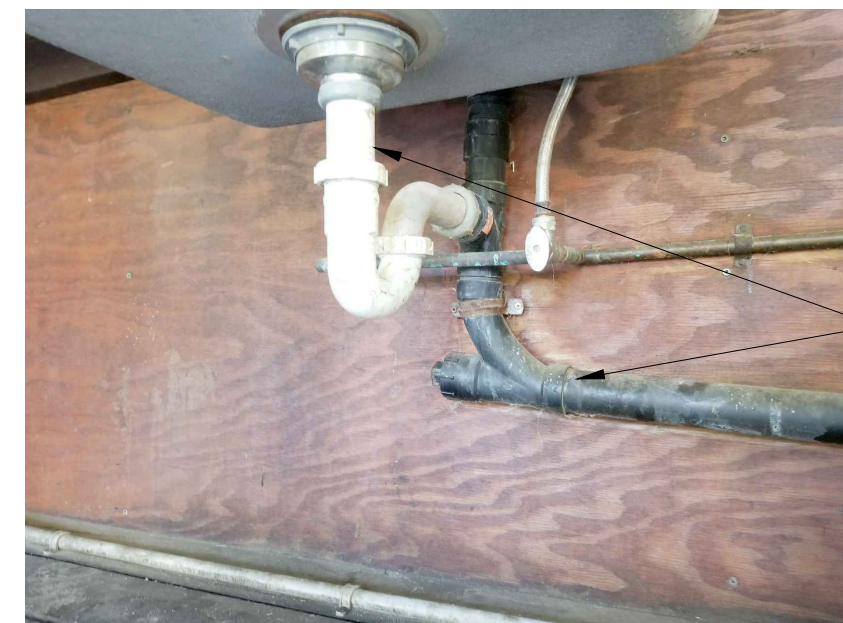
9 SINK/COUNTER AT UPPER PAVILION



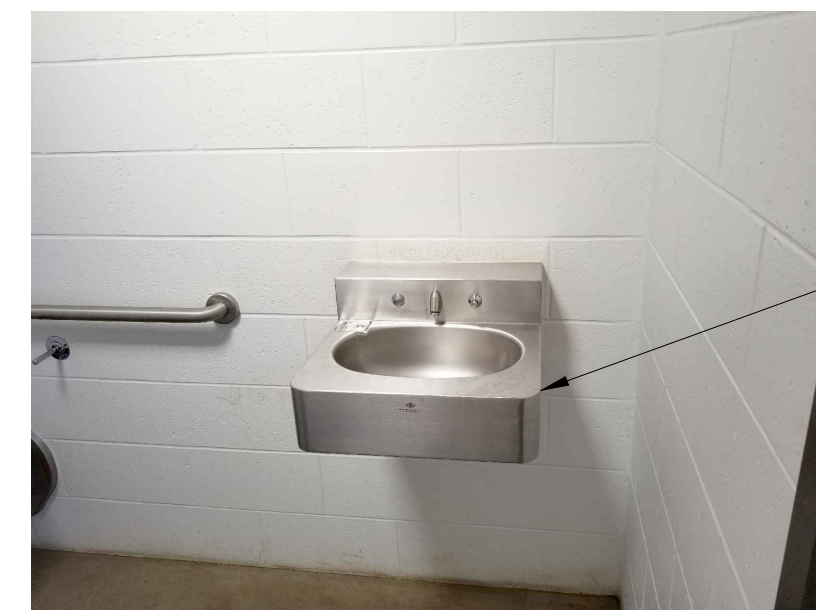
5 SINK AT UPPER RESTROOM FACILITY



14 WALKWAY AT PICNIC TABLES



10 SINK/COUNTER AT UPPER PAVILION



6 SINK AT UPPER RESTROOM FACILITY



15 BLACK OUT EXISTING STRIPING



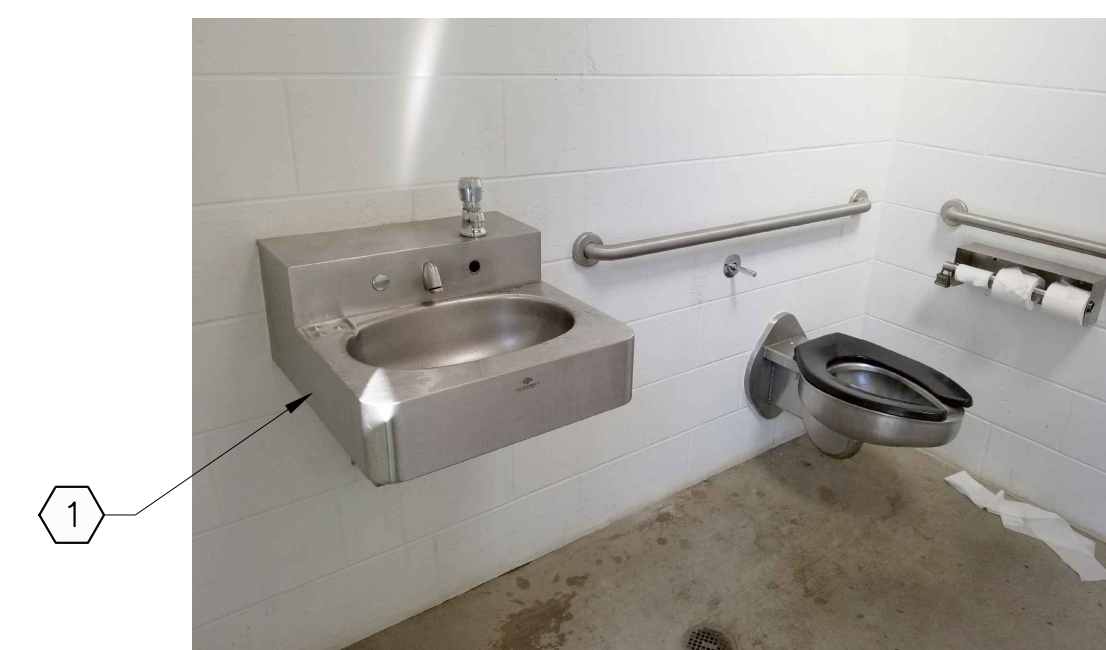
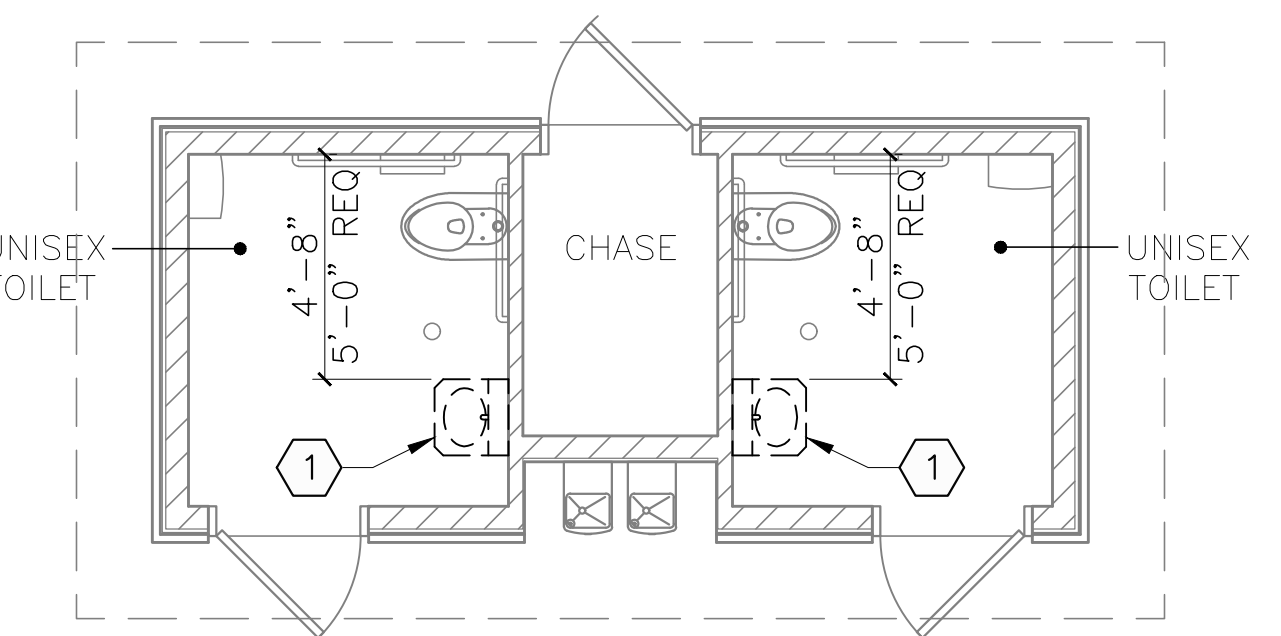
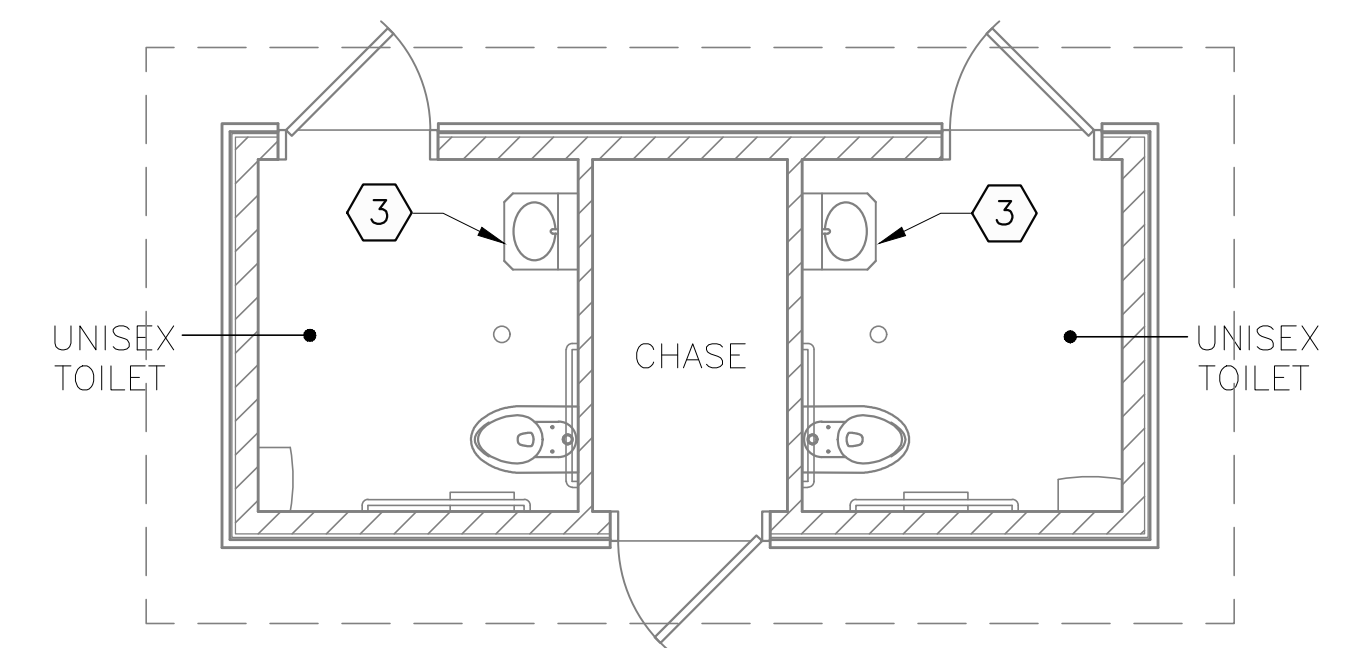
11 WATER SPIGOT AT UPPER PAVILION



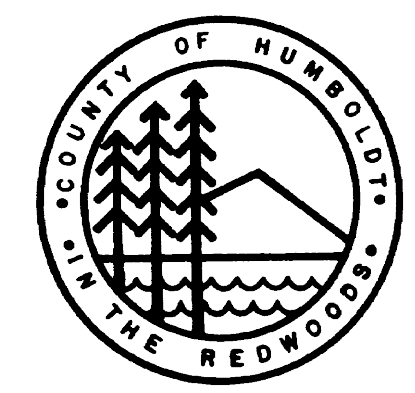
7 PICNIC TABLES AND CONCRETE SLAB AT PLAYGROUND

KEY NOTES:

- ① REMOVE EXISTING SINK/FAUCET , PREP WALL & PIPING FOR NEW SINK INSTALLATION IN NEW LOCATION PER SHEET C501
- ② REMOVE EXISTING SINK AND COUNTER (SALVAGE TO RE-INSTALL), REWORK COUNTER SUPPORTS AND PIPING SO THAT COUNTER HEIGHT IS A MAXIMUM OF 34" ABOVE EXISTING CONCRETE SLAB
- ③ EXISTING SINK TO REMAIN, ADJUST CONTROLS PER SHEET C501
- ④ REMOVE EXISTING WATER SPIGOT, WATER PIPE TO REMAIN FOR CONNECTION TO NEW DRINKING FOUNTAIN
- ⑤ REMOVE EXISTING ADA PICNIC TABLE AND CONCRETE SLAB BELOW
- ⑥ REMOVE EXISTING WATER SPIGOT AND SURROUND, CAP WATER PIPE BELOW GRADE
- ⑦ REMOVE AND RELOCATE EXISTING PICNIC TABLE, SEE SHEET C101
- ⑧ REMOVE EXISTING CONCRETE WALKWAY, (INCLUDES EXISTING TRUNCATED DOMES). EXISTING CURB TO REMAIN
- ⑨ BLACK OUT EXISTING PAINTED STRIPING ADJACENT TO ACCESS AISLE STRIPING
- ⑩ EXISTING WATER SPIGOT TO REMAIN



3 SINK AT LOWER RESTROOM FACILITY



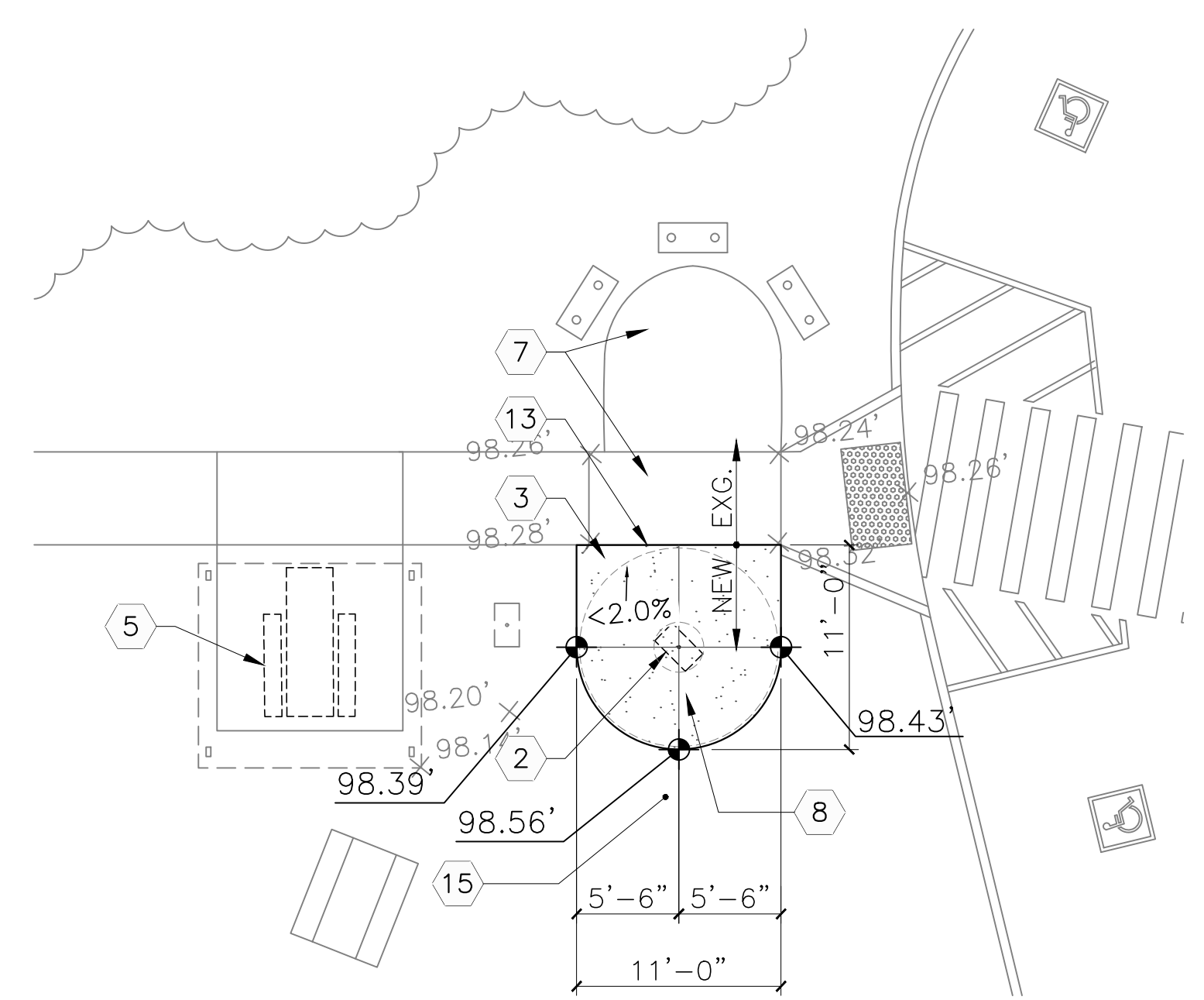
COUNTY OF HUMBOLDT
 ADA MODIFICATIONS

Revisions:

Client Number: 207-204
 Project Number: 652.03
 Date: SEPT. 14, 2018

Sheet Title:
 EXISTING TOILET FLOOR PLANS AND PHOTOS

Sheet Number:

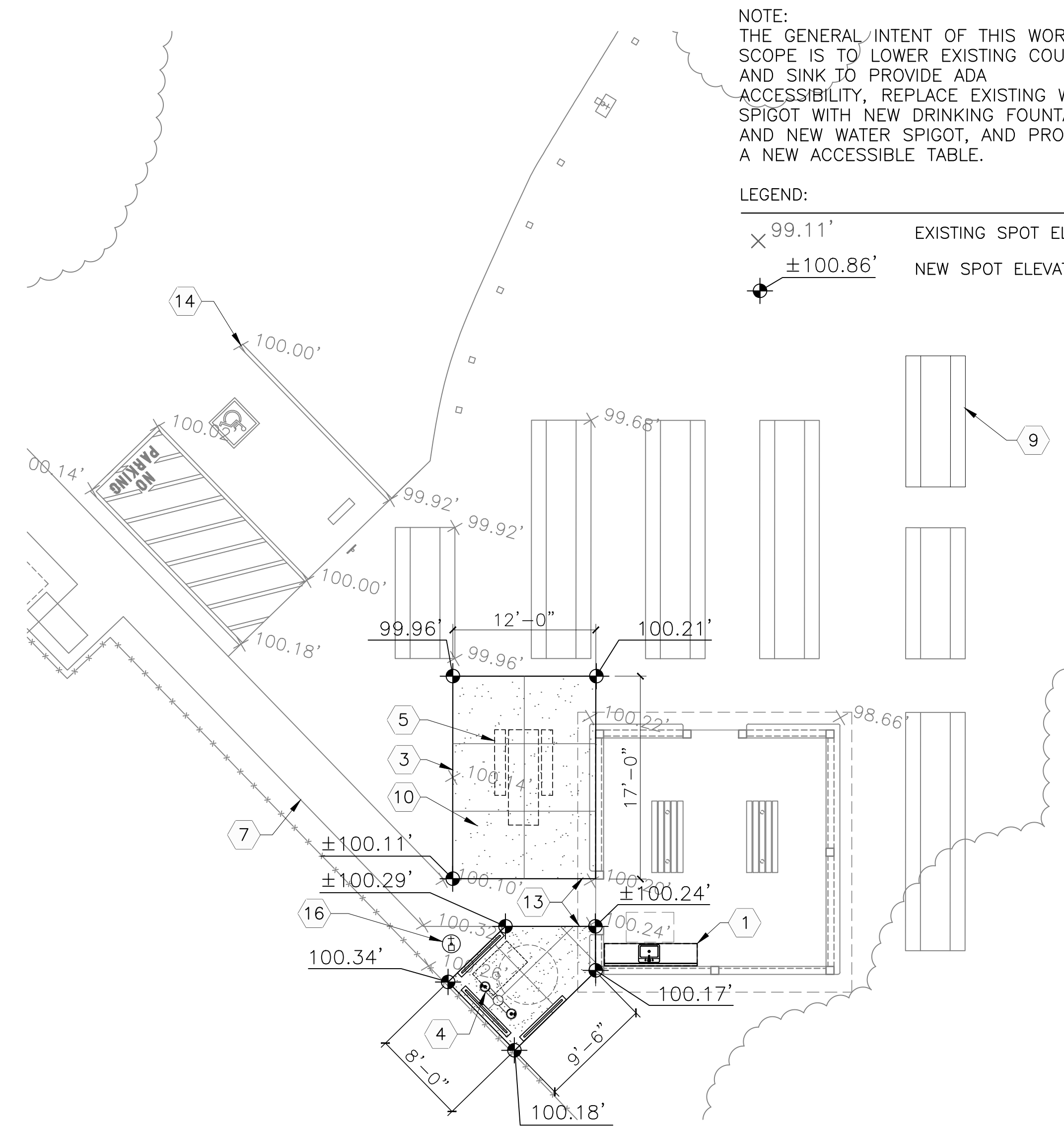


NOTE:
 THE GENERAL INTENT OF THIS WORK SCOPE IS TO INSTALL A NEW BBQ ASSEMBLY AND 5" THICK CONCRETE SIDEWALK EXTENSION. SLOPE SIDEWALK EXTENSION TOWARD (E) SIDEWALK AT 1/4" PER FT. MAX.

NOTE:
 DETAIL 2 DATUM POINT - USE SAME DATUM POINT FROM DETAIL 1/C101

LEGEND:
 X 99.11' EXISTING SPOT ELEVATIONS
 ±100.86' NEW SPOT ELEVATIONS

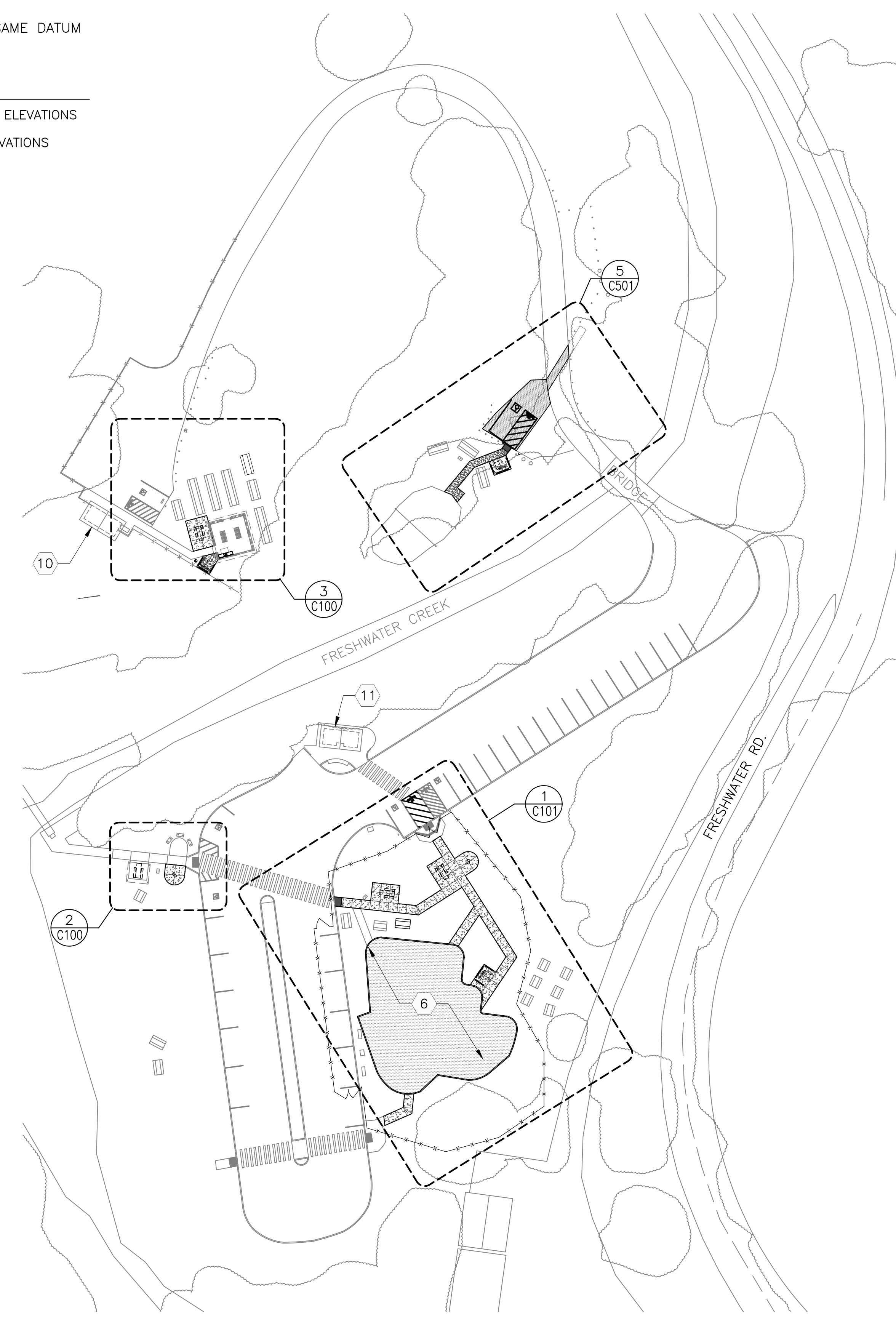
PLAN NORTH
2 PARTIAL PLAN • LOWER PICNIC AREA
 1/8" = 1'-0"
 0 4' 8' 16'



NOTE:
 THE GENERAL INTENT OF THIS WORK SCOPE IS TO LOWER EXISTING COUNTER AND SINK TO PROVIDE ADA ACCESSIBILITY, REPLACE EXISTING WATER SPIGOT WITH NEW DRINKING FOUNTAINS AND NEW WATER SPIGOT, AND PROVIDE A NEW ACCESSIBLE TABLE.

LEGEND:
 X 99.11' EXISTING SPOT ELEVATIONS
 ±100.86' NEW SPOT ELEVATIONS

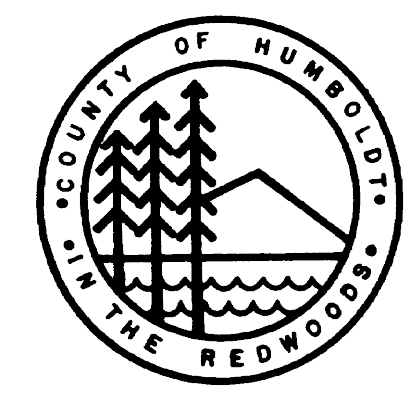
PLAN NORTH
3 PARTIAL PLAN • UPPER PAVILION
 1/8" = 1'-0"
 0 4' 8' 16'



NORTH
1 SITE PLAN
 1" = 40'
 0 20 40 80

- GENERAL NOTES:**
- NEW PLAYGROUND EQUIPMENT TO BE FURNISHED BY COUNTY.
 - PLAYGROUND SHAPE AND CONNECTION TO NEW OR EXISTING CONCRETE WALKWAYS TO BE COORDINATED BETWEEN PLAYGROUND EQUIPMENT SUPPLIER AND COUNTY.
 - ALL WORK SHALL COMPLY WITH THE 2016 CBC AND 2016 PLUMBING CODE.
 - CONTRACTOR COMPLETED PROJECT COMPONENTS REQUIRES A CLASS A GENERAL ENGINEERING CONTRACTORS LICENSE IN THE STATE OF CALIFORNIA.
 - A SET OF SIGNED WORK DRAWINGS AND SPECIFICATIONS SHALL BE KEPT ONSITE AT ALL TIMES ON WHICH ALL CHANGES OR ADJUSTMENTS IN THE WORK ARE RECORDED.
 - ANY MATERIAL NOT REUSED ON SITE SHALL BE REMOVED FROM THE PROJECT SITE AND DISPOSED OF IN A MANNER CONSISTENT WITH APPLICABLE REGULATIONS SUCH AS COUNTY GRADING ORDINANCES. CONTRACTOR IS RESPONSIBLE FOR PROPER DISPOSAL OF MATERIALS TAKEN FROM THE SITE.
 - THE CONTRACTOR IS RESPONSIBLE FOR COORDINATING APPROVED STAGING AREAS WITH THE COUNTY.
 - THE CONTRACTOR SHALL, UPON COMPLETION OF THE PROJECT, LEAVE THE PROJECT AREA FREE OF STOCKPILES, DEBRIS, AND UNSUITABLE MATERIAL.
 - THE CONTRACTOR SHALL BE HELD RESPONSIBLE FOR ANY AND ALL DAMAGES TO EXISTING ROADS, UTILITIES, AND STRUCTURES DURING CONSTRUCTION. ALL DAMAGE SHALL BE RESTORED TO EQUAL OR BETTER CONDITION AT THE CONTRACTOR'S EXPENSE.
 - NATIVE TOPSOIL THAT IS EXCAVATED IS TO BE SEGREGATED AND STOCKPILED ON SITE FOR RE-USE.
 - ALL MATERIALS SHALL BE FURNISHED AND INSTALLED BY THE CONTRACTOR UNLESS OTHERWISE NOTED.
 - CONTRACTOR SHALL COORDINATE CONSTRUCTION SCHEDULE WITH THE COUNTY'S REPRESENTATIVE PRIOR TO COMMENCEMENT OF WORK.

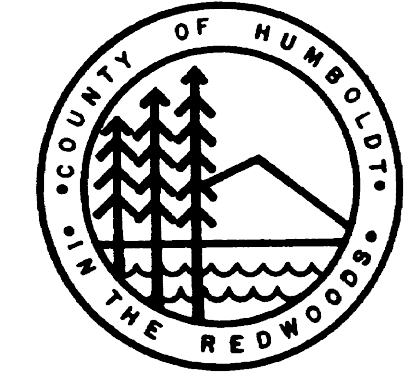
- KEY NOTES:**
- REWORK EXISTING COUNTER SUPPORTS AND PIPING SO THAT COUNTER HEIGHT AND SINK ARE A MAX. OF 34" ABOVE EXISTING CONCRETE SLAB. REPLACE EXISTING FAUCET KNOB CONTROLS WITH LEVER CONTROLS.
 - NEW ADA ACCESSIBLE BBQ ASSEMBLY, PROVIDE CLEAR FLOOR SPACE OF 48" AROUND PERIMETER OF GRILL. SEE DETAIL 4/C501.
 - NEW 5" THICK SLAB-ON-GRADE, SEE DETAILS 1 AND 3/C501.
 - PROVIDE NEW ADA ACCESSIBLE DRINKING FOUNTAIN, ADJUST AND CONNECT EXISTING WATER SUPPLY PIPING. SEE DETAIL 3/C101.
 - NEW ADA ACCESSIBLE PICNIC TABLE.
 - NEW PLAYBOUND POUR-IN-PLACE PLAYGROUD SURFACE (N.I.C.) OVER CRUSHED STONE BASE (APPROX. 5,000 SF). COLOR TBD.
 - EXISTING SIDEWALK/SLAB TO REMAIN.
 - SLOPE IN ALL DIRECTIONS 1:48 MAX.
 - RELOCATED PICNIC TABLE
 - SEE 6/C501 FOR ENLARGED TOILET ROOM PLAN REVISIONS.
 - SEE 7/C501 FOR ENLARGED TOILET ROOM PLAN REVISIONS.
 - CLEAR FLOOR SPACE SHALL BE 30"x48" PER CBC 11B-305.3. MAX SLOPE TO BE 1:48 IN ALL DIRECTIONS.
 - ALIGN ELEVATION OF NEW SLAB WITH ELEVATION OF EXISTING SLAB.
 - DATUM POINT LOCATION FOR ELEVATION REFERENCE, DEFINED AS 100'-0". POINT IS CENTERED ON THE END OF THE EXISTING PARKING STRIPE.
 - REMOVE AND RE-GRADE EXISTING TOPSOIL ADJACENT TO SIDEWALK EXTENSION, MAXIMUM SLOPE 1:20.
 - PROVIDE NEW LANDSCAPE BASIN, WOOD POST SUPPORT AND WATER SPIGOT, (MATCH EXISTING, SEE 11/CD101). CONNECT TO NEW WATER PIPING.



COUNTY OF HUMBOLDT
 ADA MODIFICATIONS

Revisions:
 Client Number: 207-204
 Project Number: 65203
 Date: SEPT. 14, 2018

Sheet Title:
SITE PLAN AND ENLARGED PLANS
 Sheet Number:



COUNTY OF HUMBOLDT
 ADA MODIFICATIONS

Revisions:

Client Number: 207-204
 Project Number: 65203
 Date: SEPT. 14, 2018

Sheet Title:

ENLARGED
 SITE PLAN

Sheet Number:

C101

KEY NOTES:

- 1 NEW ADA ACCESSIBLE PICNIC TABLE.
- 2 NEW 5" THICK SLAB-ON-GRADE, SEE DETAILS 1 AND 3/C501.
- 3 5'-0" WIDE CONCRETE WALK, ADA ACCESSIBLE ROUTE TO PLAYGROUND. CROSS SLOPE SHALL NOT EXCEED 1:48. SEE DETAIL 3/C501.
- 4 TIE NEW SLAB-ON-GRADE TO EXISTING. AT SAME ELEVATION. SEE DETAIL 2/C501.
- 5 PROVIDE ADA ACCESSIBLE DRINKING FOUNTAIN. ADJUST AND CONNECT TO EXISTING WATER SUPPLY PIPING. SEE DETAIL 4/C101.
- 6 MAX. SLOPE IN ALL DIRECTIONS 1:48
- 7 CLEAR FLOOR SPACE SHALL BE 30"x48" PER CBC 11B-305.3. MAX SLOPE NOT TO EXCEED 1:48 IN ALL DIRECTIONS. CLEAR FLOOR SPACE NOT TO OBSTRUCT ADJACENT WALKWAY.
- 8 NEW ADA ACCESSIBLE BBQ ASSEMBLY, PROVIDE CLEAR FLOOR SPACE OF 48" AROUND PERIMETER OF GRILL. SEE DETAIL 4/C501.
- 9 NEW PLAYGROUND POUR-IN-PLACE PLAYGROUND SURFACE (N.I.C.) OVER CRUSHED STONE BASE (APPROX. 5,000 SF). COLOR TBD. STONE IS A BASE BID ITEM.
- 10 TOP OF WALK TO ALIGN WITH TOP OF PLAYGROUND SURFACE.
- 11 EXISTING ACCESSIBLE PARKING STALL
- 12 EXISTING PARKING STALL CURB ACCESS
- 13 TOP OF NEW PLAYGROUND SURFACE TO ALIGN HORIZONTALLY WITH EXISTING WALK.
- 14 FLUSH CONCRETE CURB. COORDINATE SHAPE WITH PLAYGROUND EQUIPMENT SUPPLIER. SEE DETAIL 11/C501.
- 15 6'-0" MINIMUM HEIGHT TEMPORARY CONSTRUCTION FENCE.
- 16 (2 TOTAL) 15'-0" W. x 6'-0" H. MIN., SWING GATES IN TEMPORARY CONSTRUCTION FENCE.
- 17 60" TURNING SPACE. SLOPE IN THIS AREA NOT TO EXCEED 1:48 MAX. IN ALL DIRECTIONS.
- 18 12" HIGH WHITE PAINTED LETTERING.
- 19 RELOCATED PICNIC TABLE.
- 20 ACCESS AISLE SHALL BE MARKED WITH A 4" BLUE (FS15090) PAINTED BORDERLINE AROUND PERIMETER OF ACCESS AISLE. STRIPING INSIDE ACCESS AISLE SHALL BE 4" WIDE, PAINTED WHITE AT 36" O.C.
- 21 TRUNCATED DOME (36" DEEP MIN. x 5'-0"), SEE DETAIL 2/C101.
- 22 TOP OF NEW WALK TO ALIGN WITH TOP OF EXISTING CURB.
- 23 (1 TOTAL) 8'-0" W. 6'-0" H. MIN. SWING GATE IN TEMPORARY CONSTRUCTION FENCE.
- 24 DATUM POINT FOR ELEVATION REFERENCE DEFINED AS 100'-0" AT CENTER OF TOP OF RAMP
- 25 ADA ACCESSIBLE DRINKING FOUNTAIN

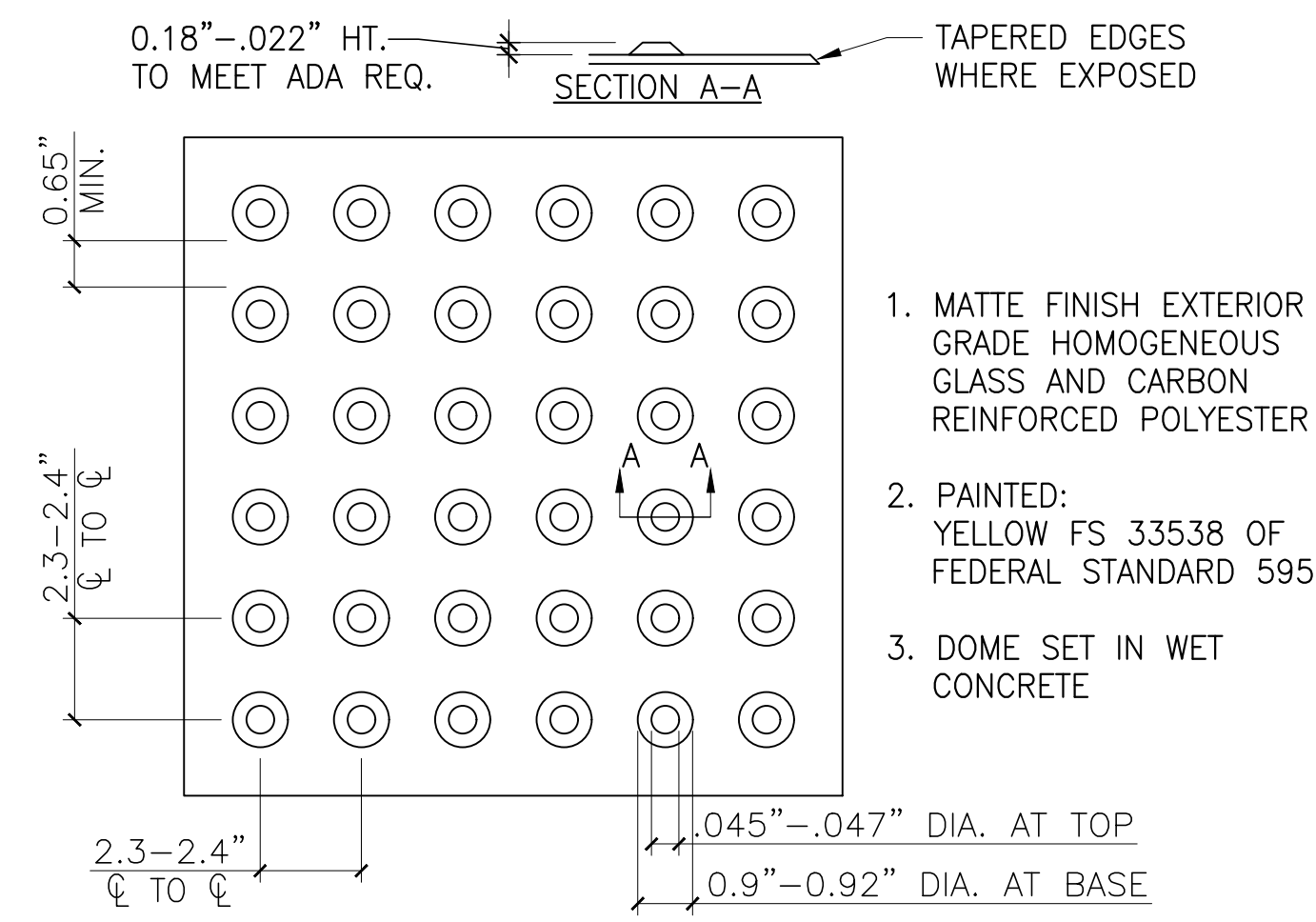
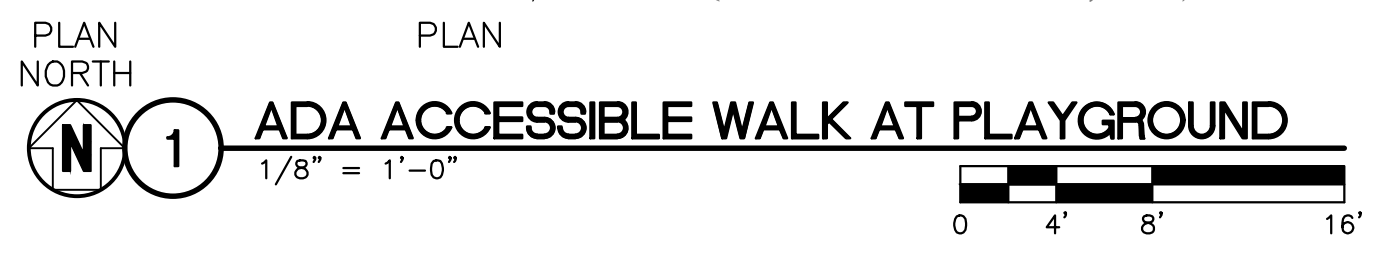
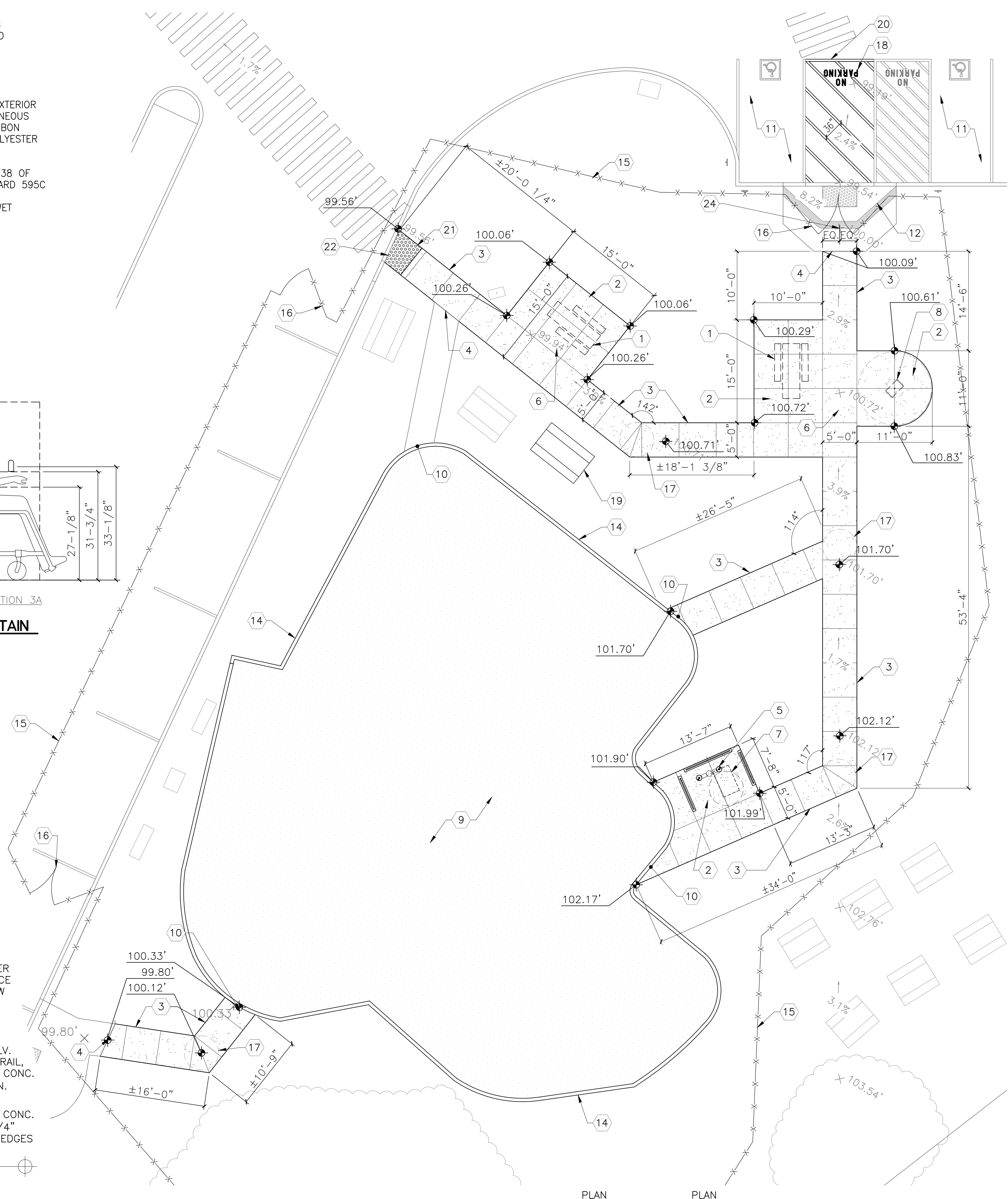
GENERAL NOTES:

1. INTENT OF SIDEWALK TOPOGRAPHY IS TO FOLLOW GRADE, HOWEVER WITH STRAIGHT LINES.

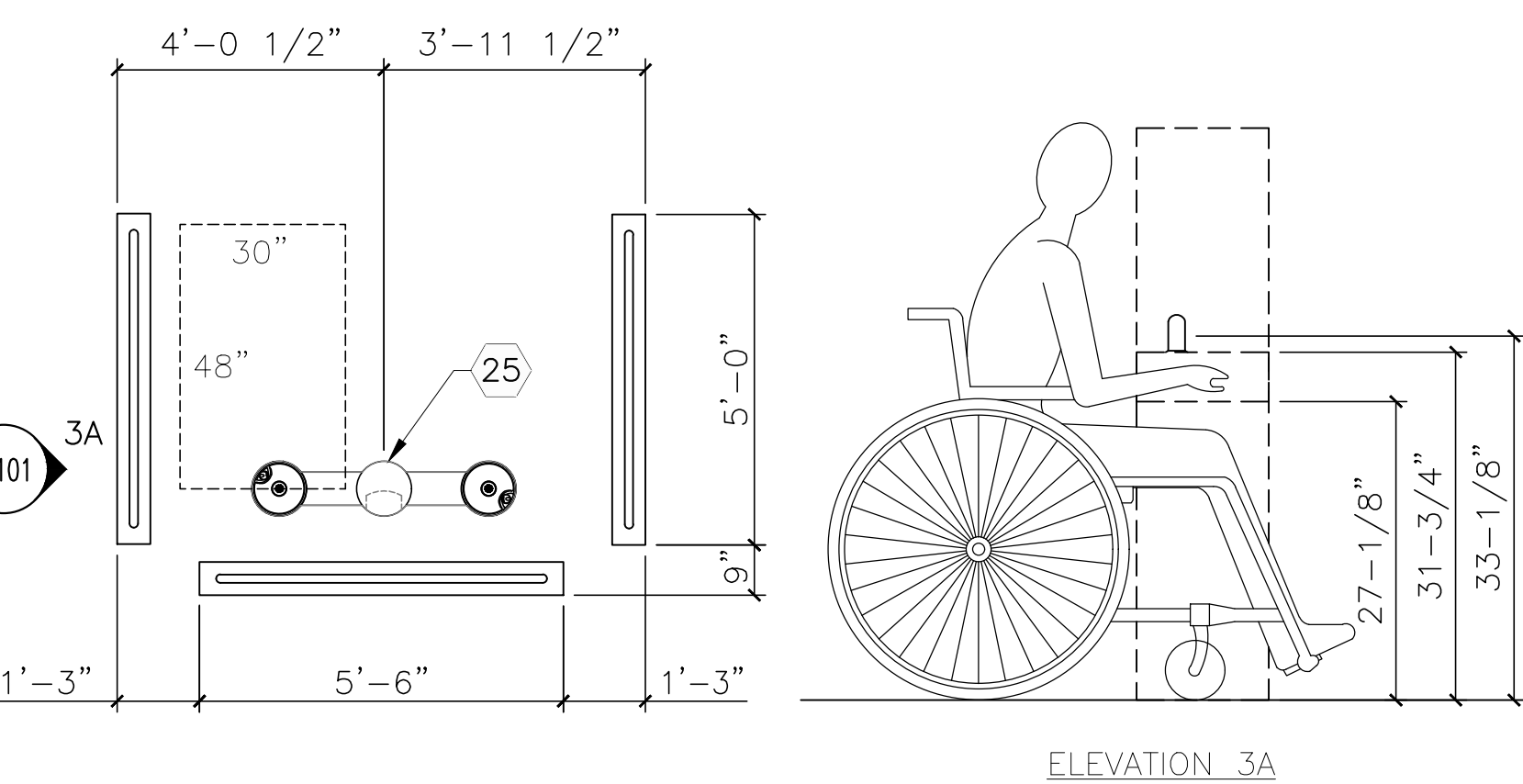
LEGEND:

- × 99.11' EXISTING SPOT ELEVATIONS
- ±100.86' NEW SPOT ELEVATIONS

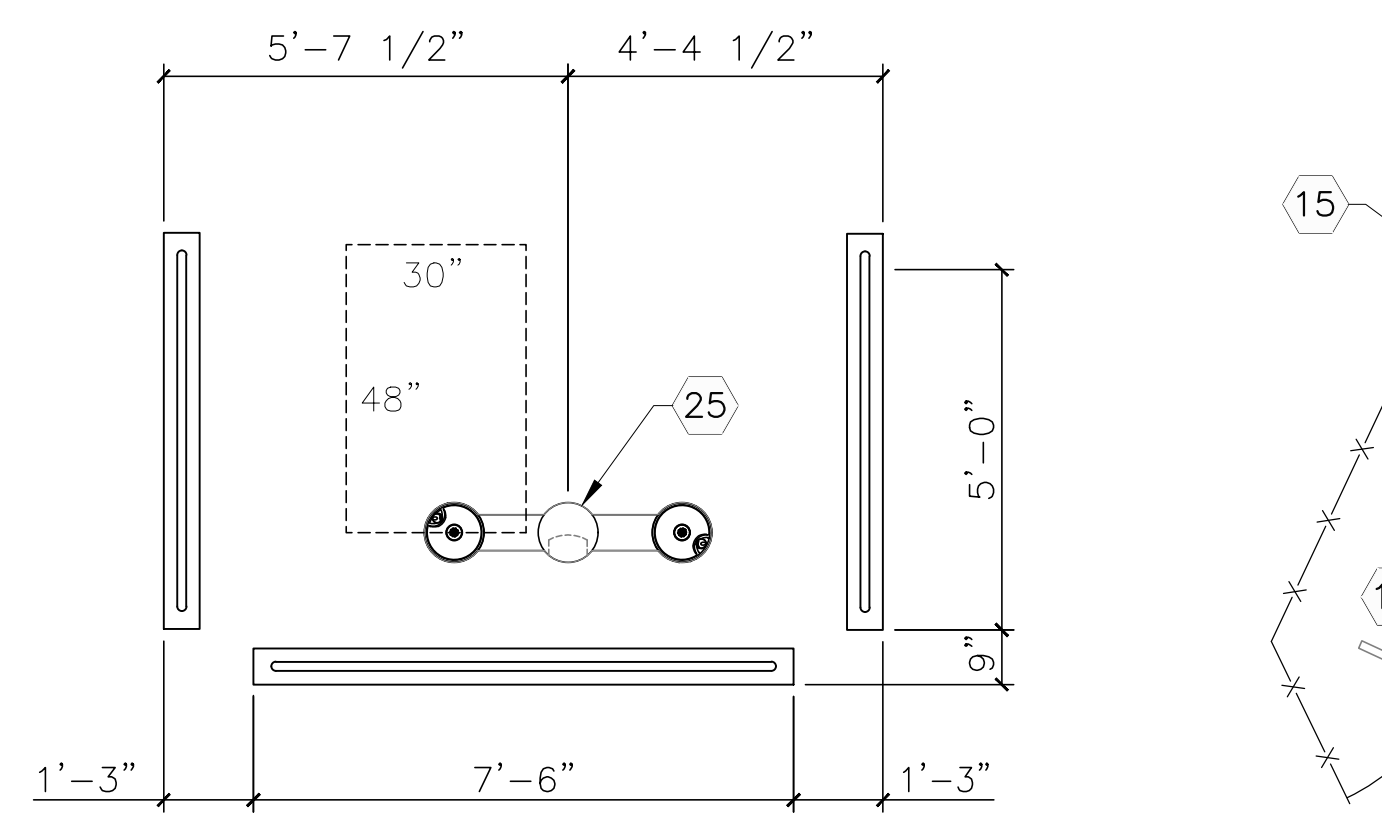
FRESHWATER PARK



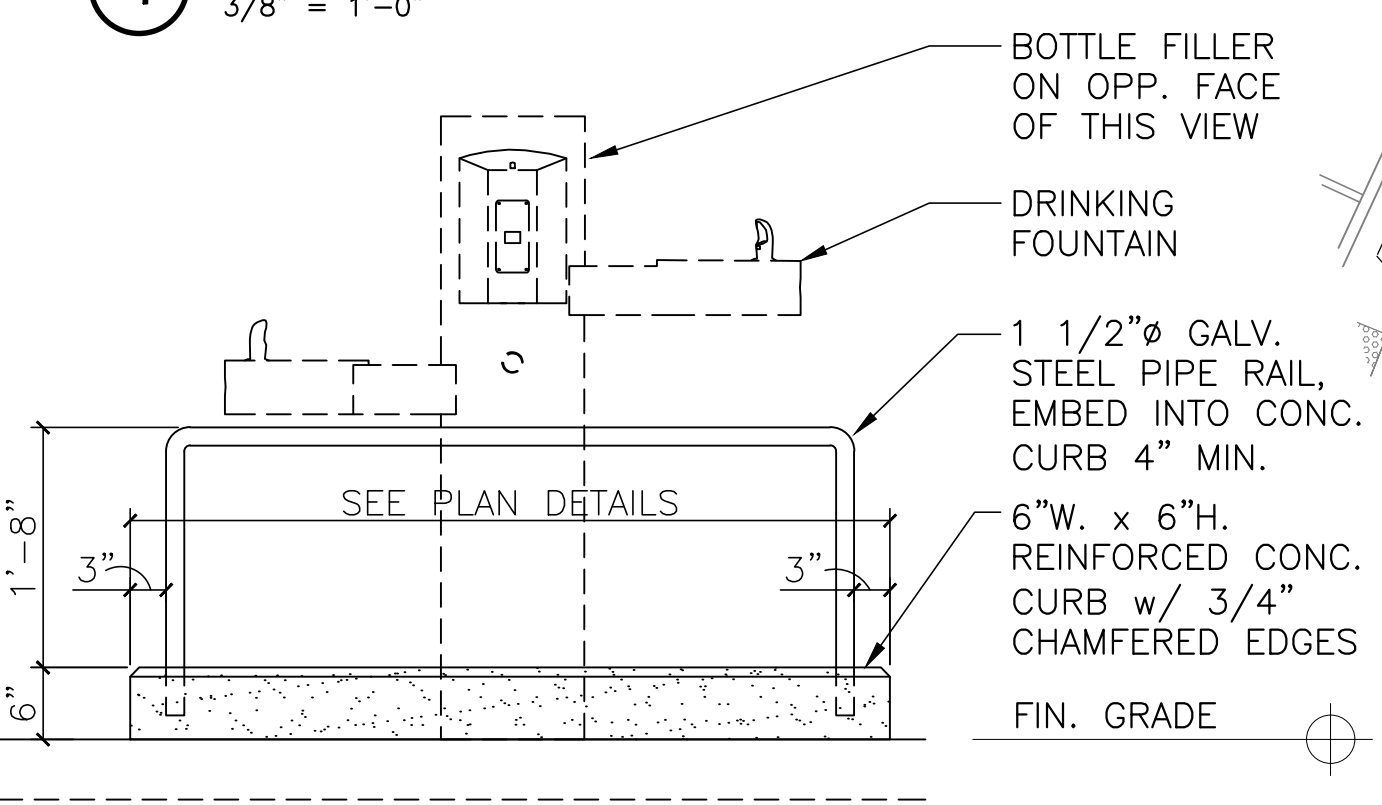
2 TRUNCATED DOMES
 NOT TO SCALE



3 PLAN AND ELEVATION AT DRINKING FOUNTAIN
 3/8" = 1'-0"



4 PLAN AT DRINKING FOUNTAIN
 3/8" = 1'-0"

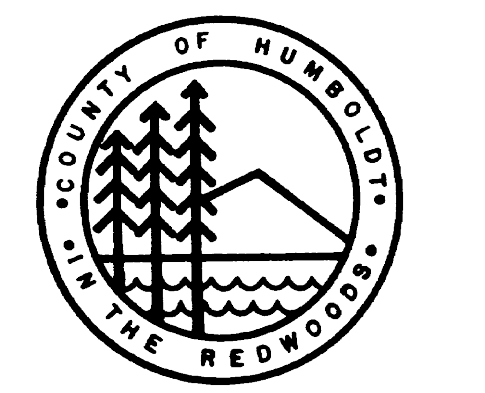
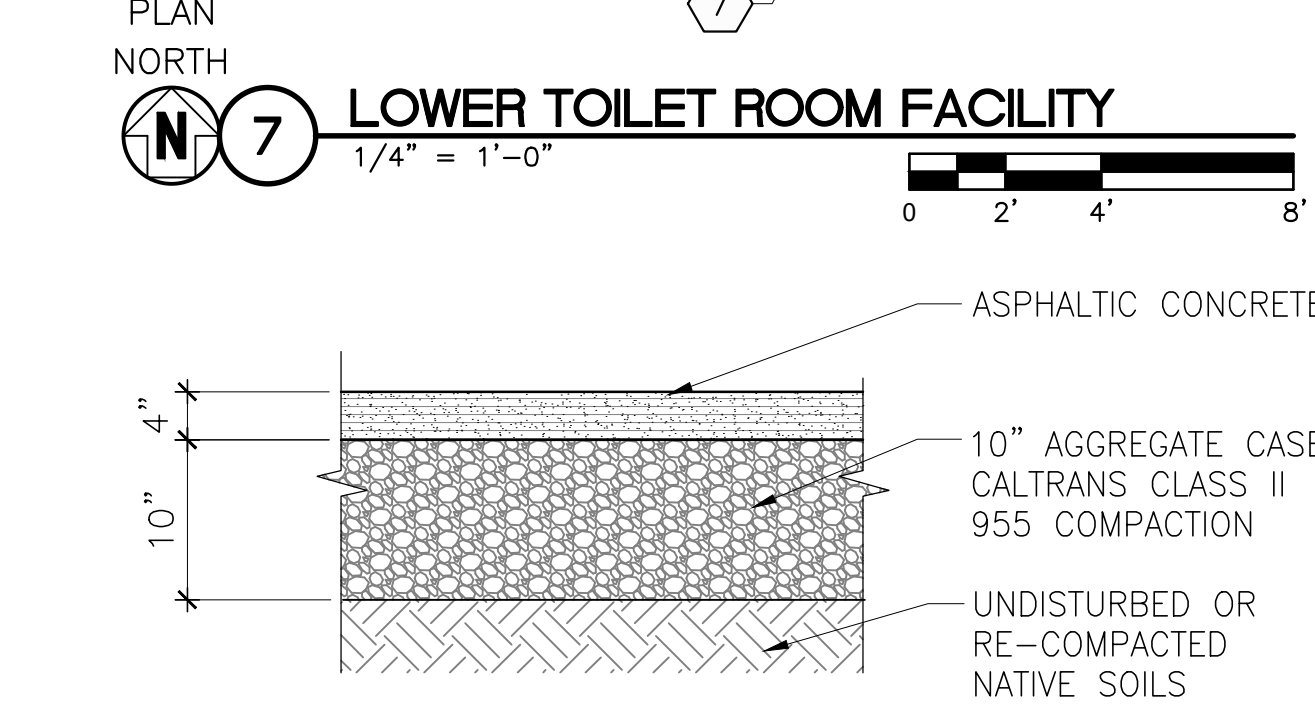
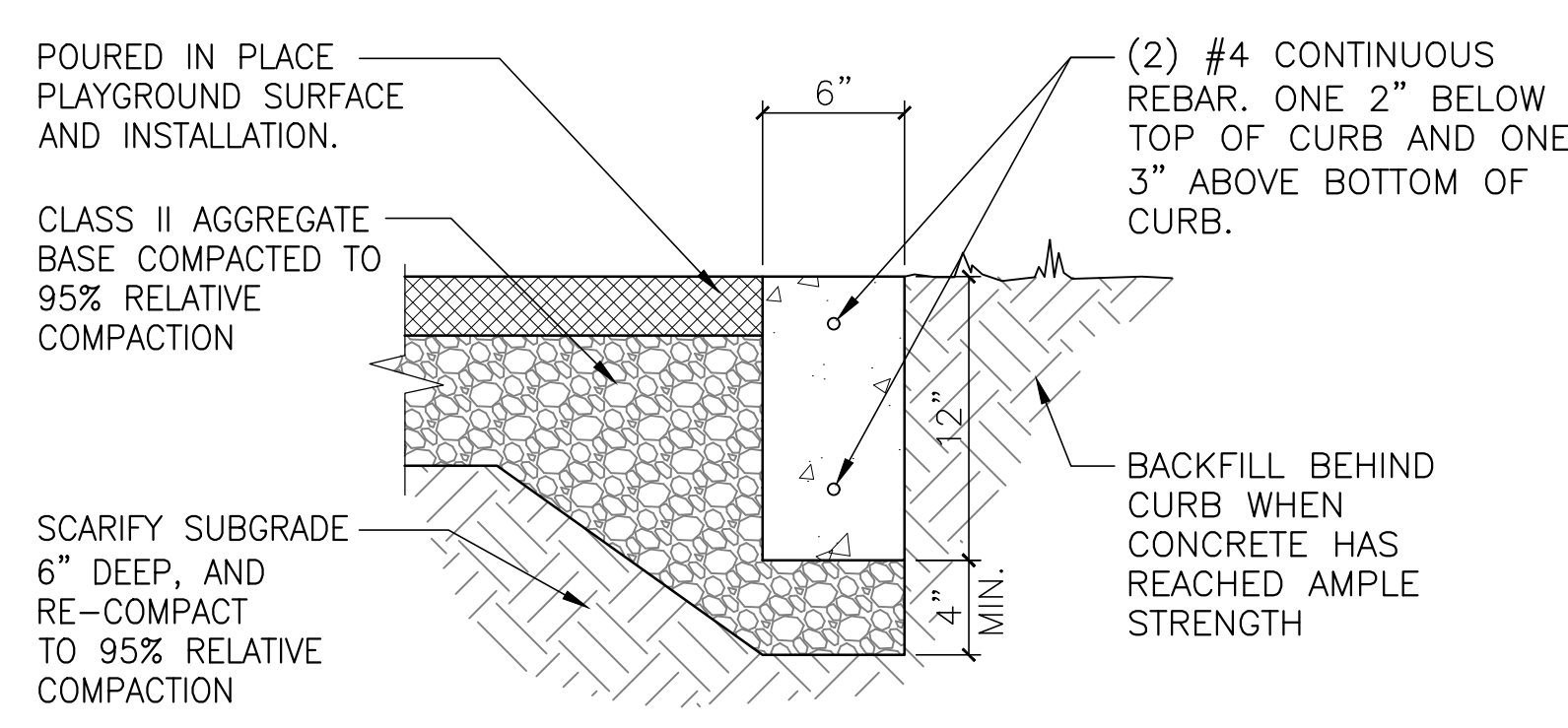
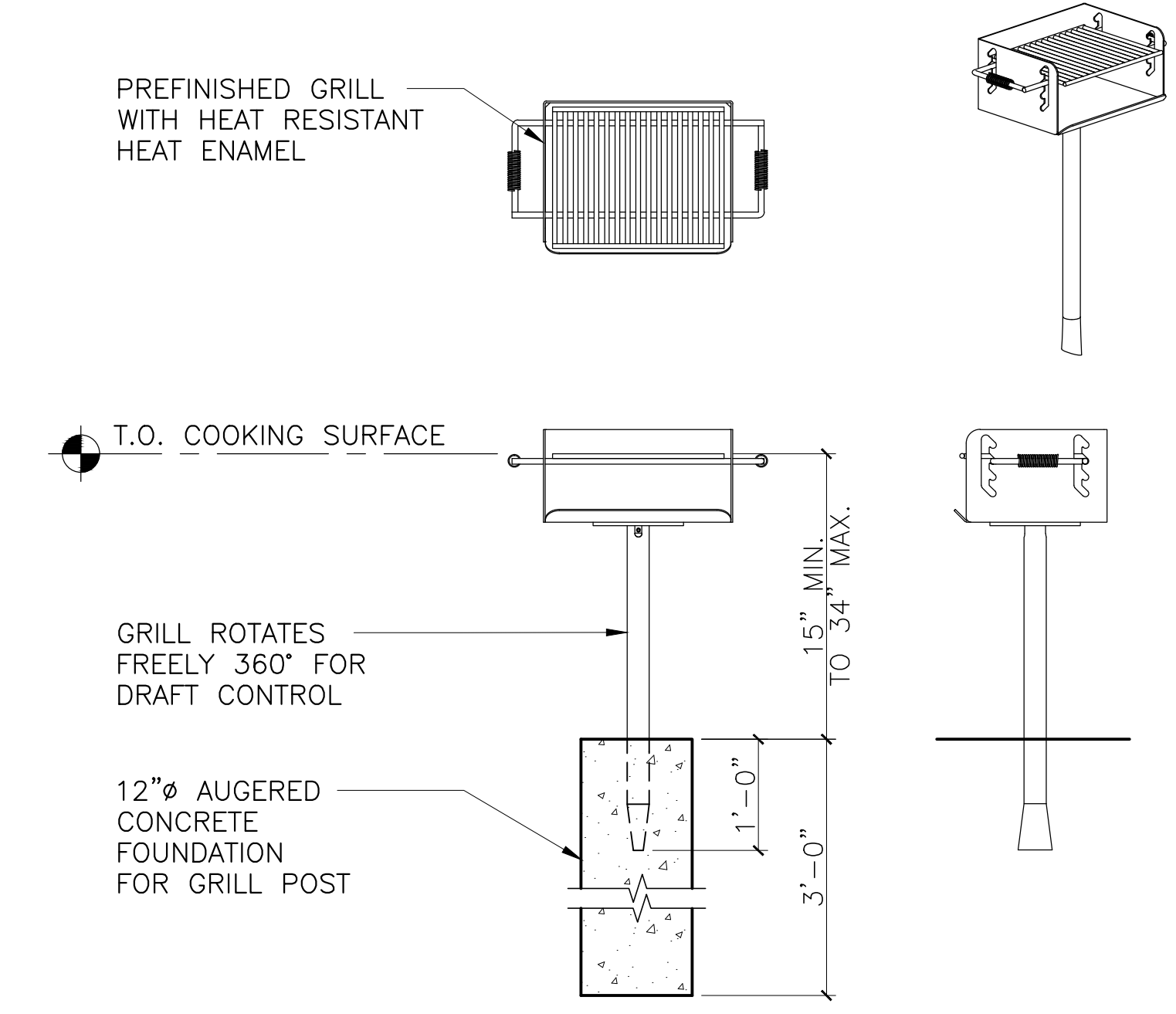
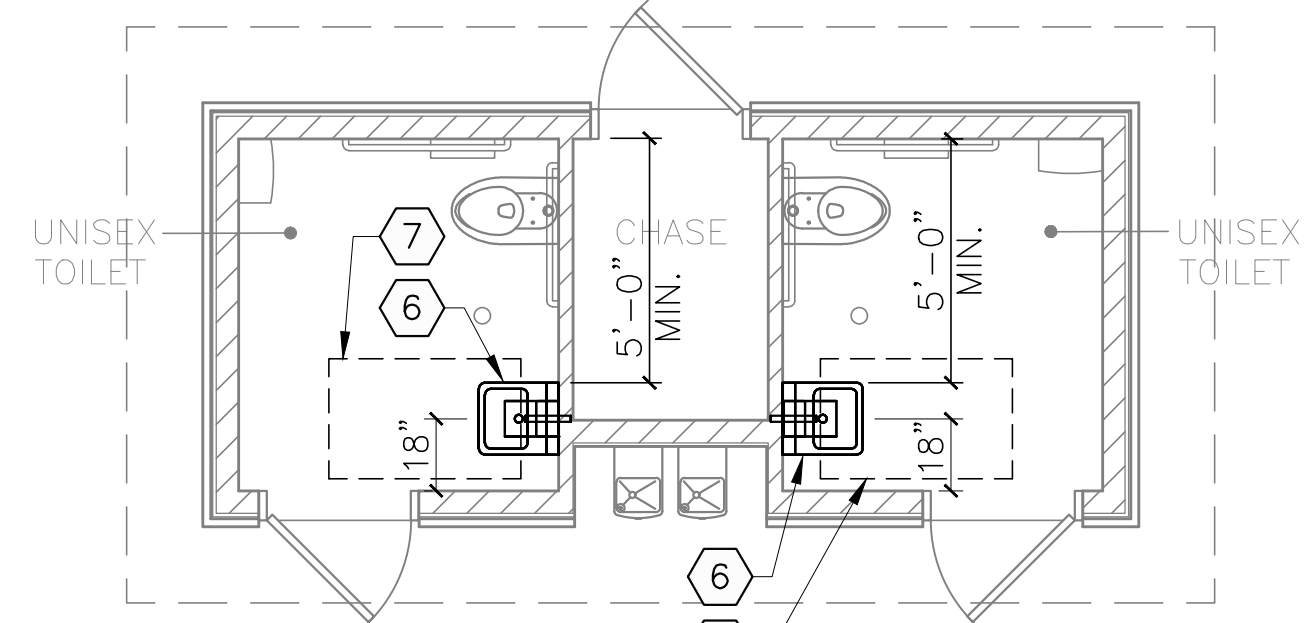
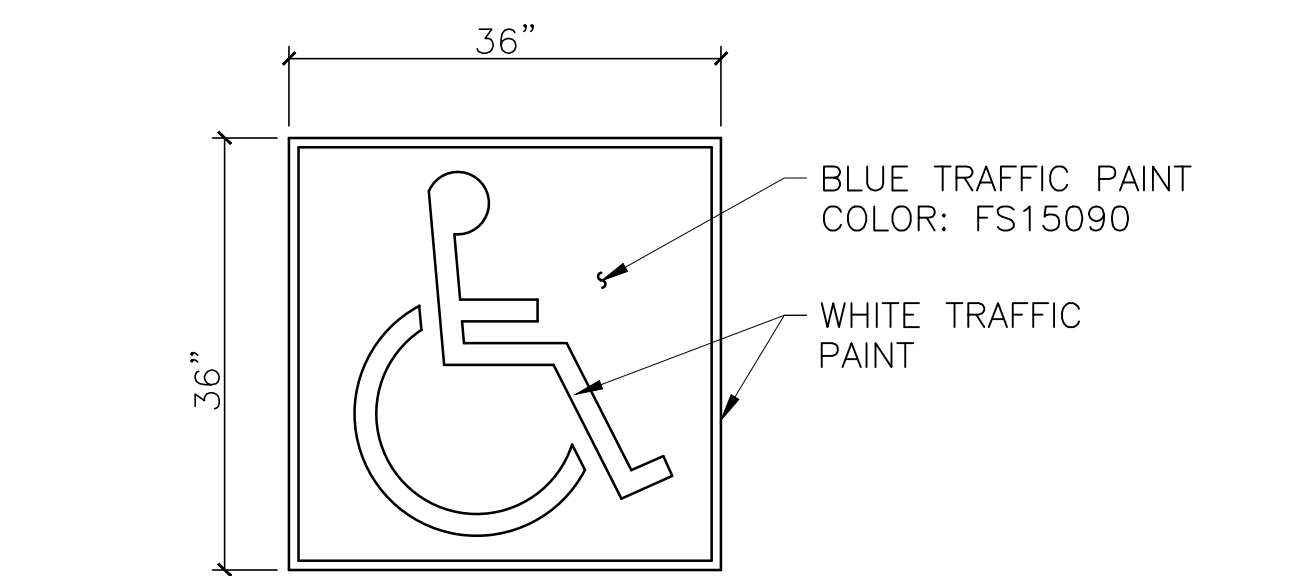
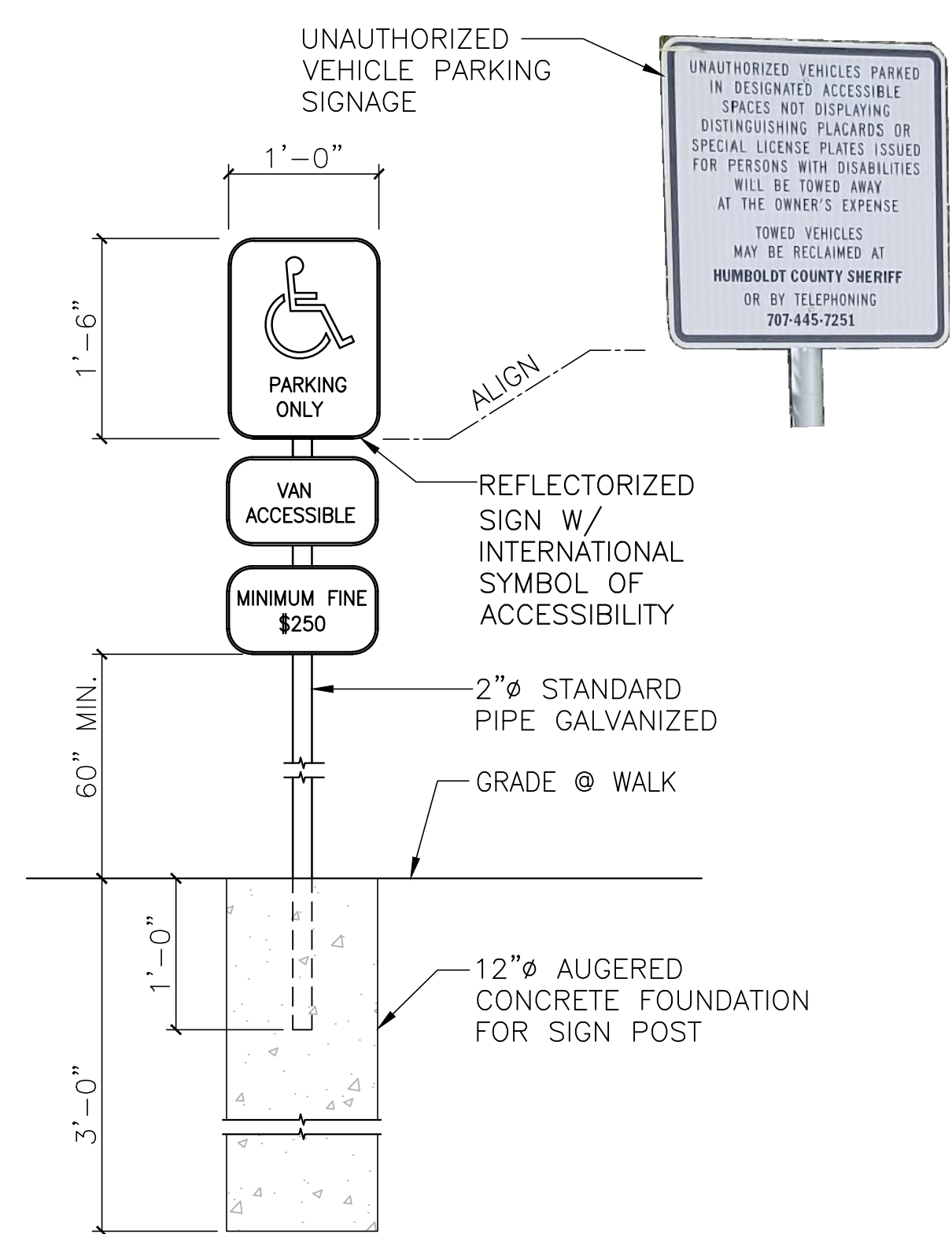
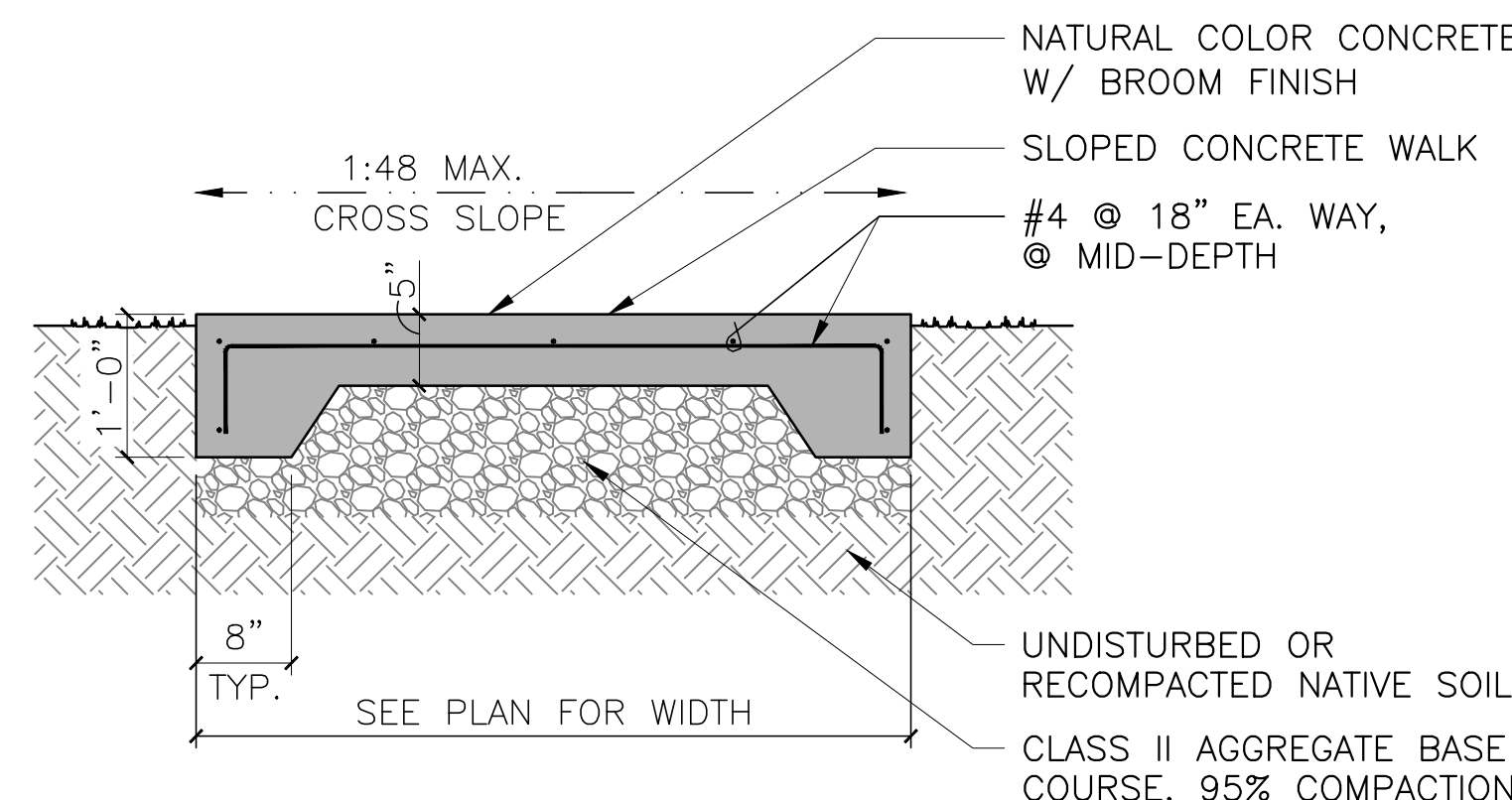
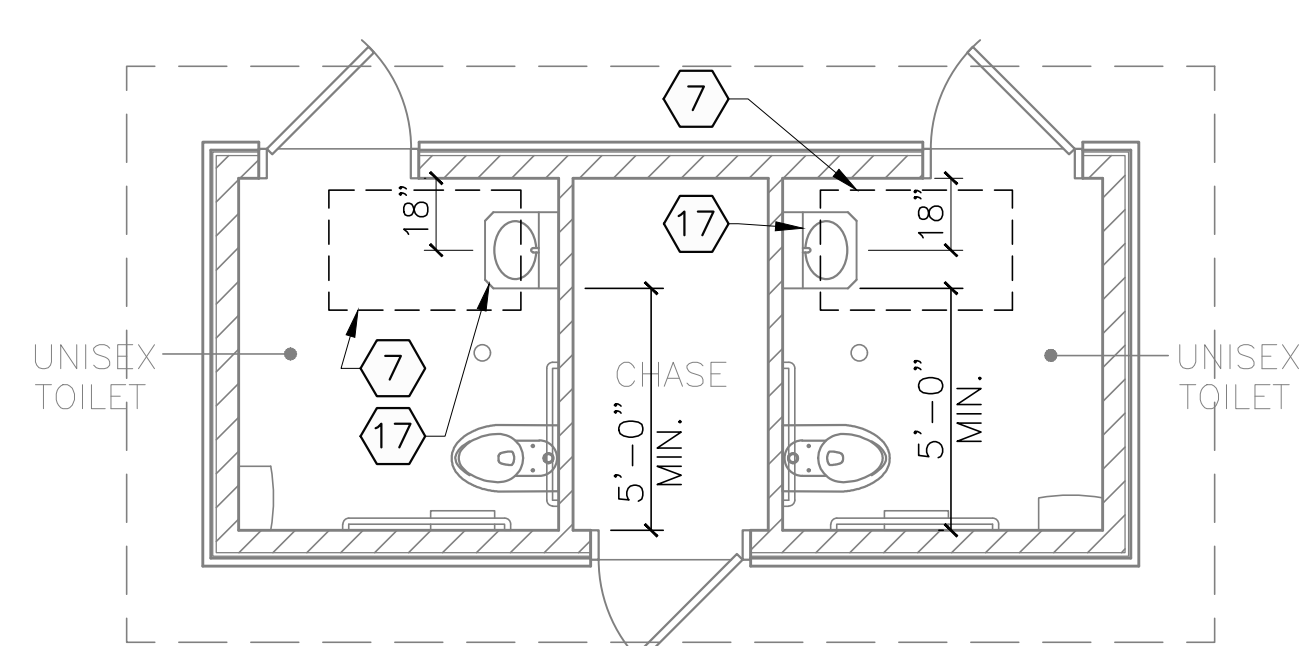
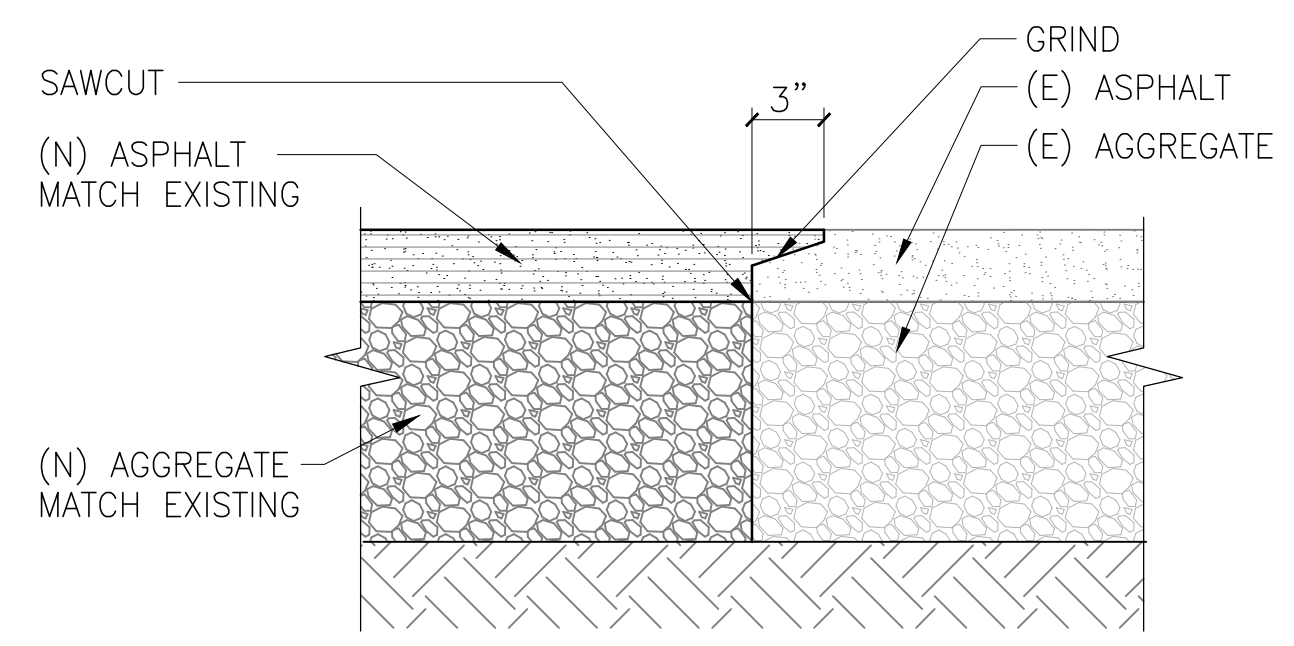
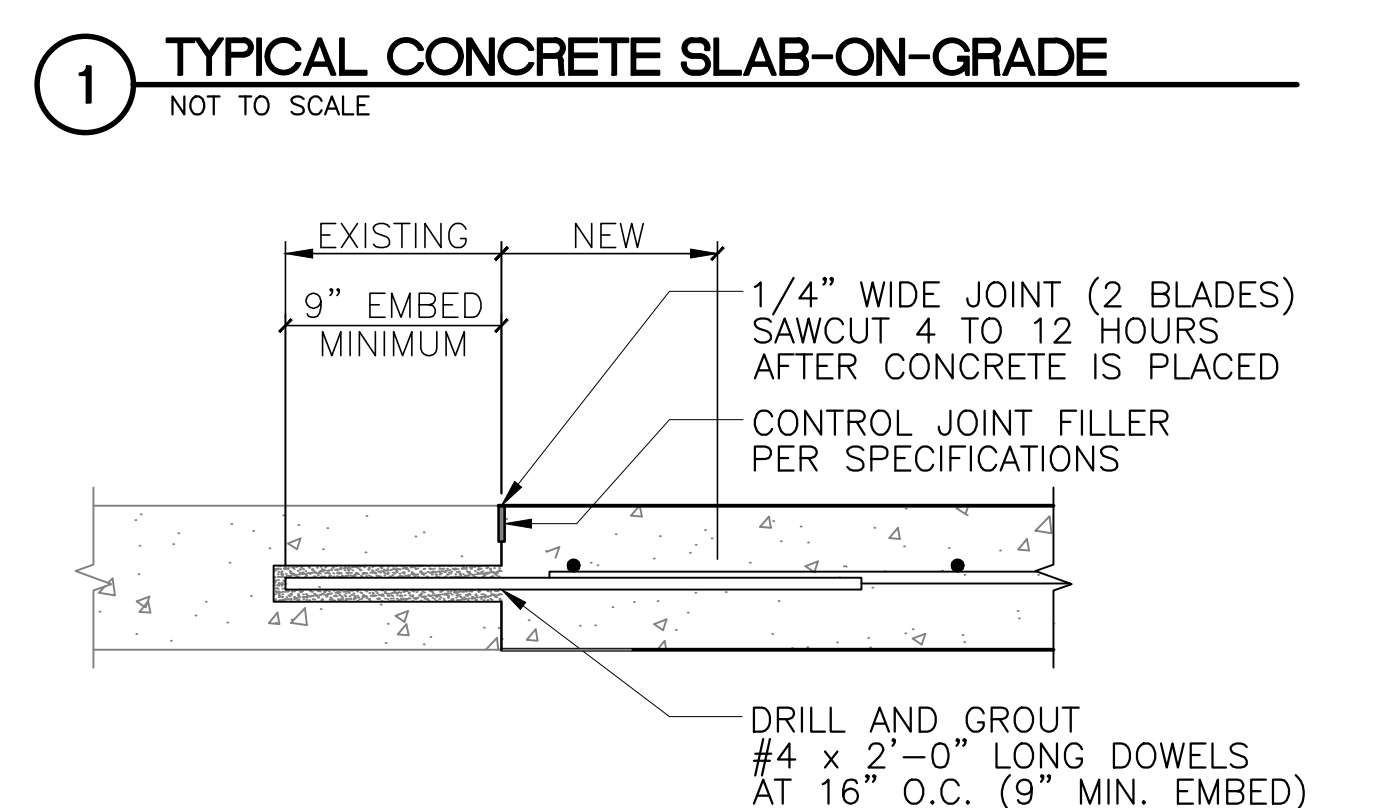
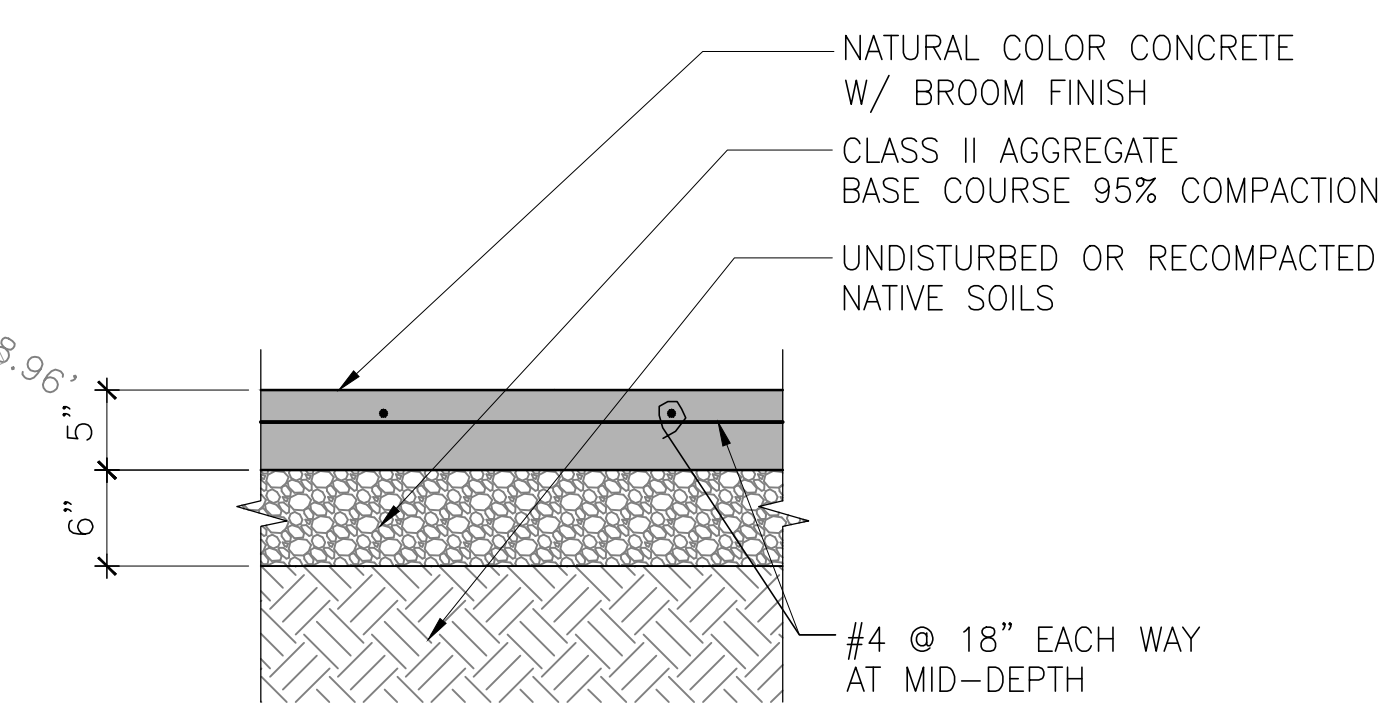
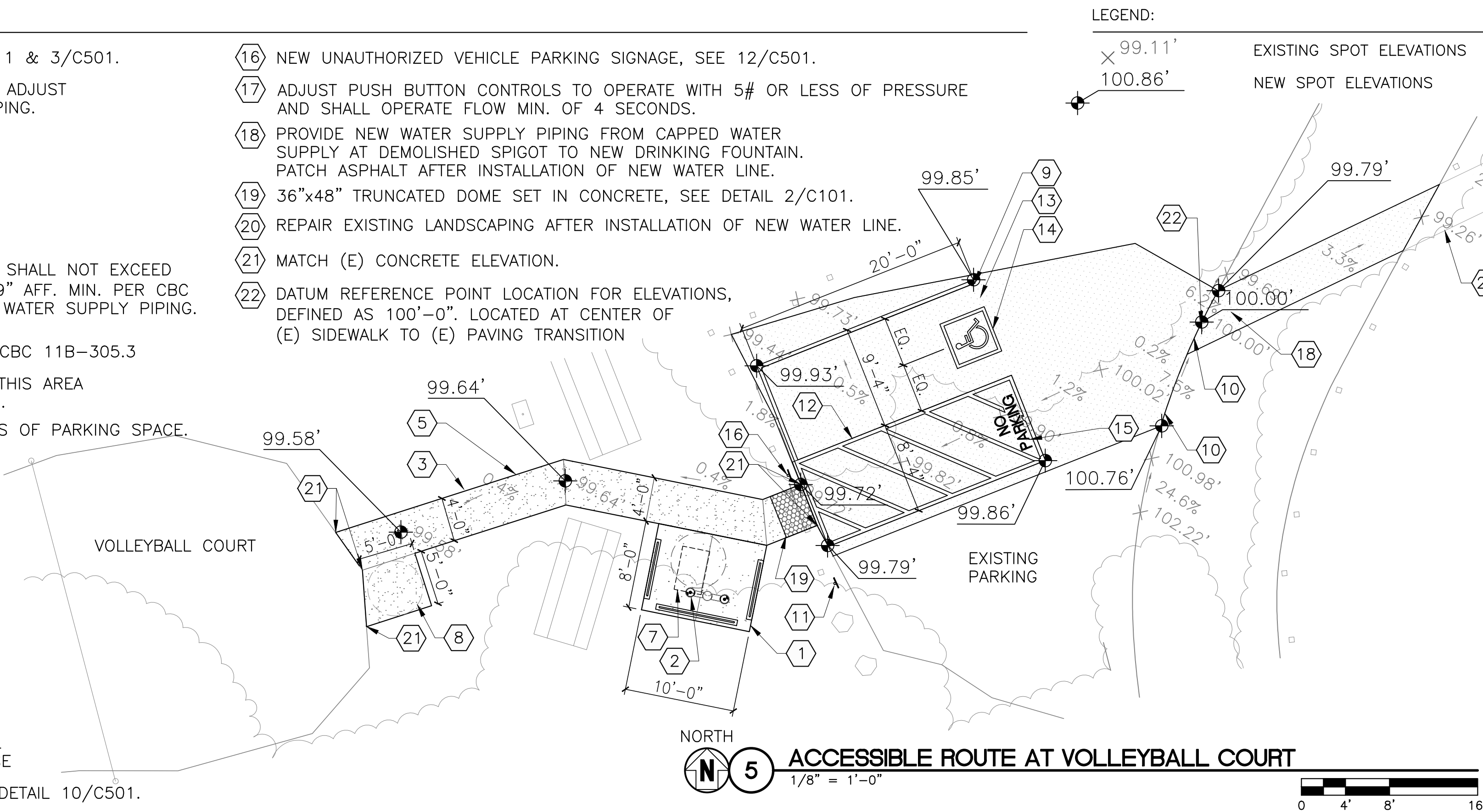


5 ELEVATION AT DRINKING FOUNTAIN
 3/4" = 1'-0"

KEY NOTES:

- 1 NEW 5" THICK SLAB-ON-GRADE, SEE DETAILS 1 & 3/C501.
- 2 PROVIDE ADA ACCESSIBLE DRINKING FOUNTAIN. ADJUST AND CONNECT TO EXISTING WATER SUPPLY PIPING. SEE DETAIL 3/C101.
- 3 NEW PATH TO VOLLEYBALL COURT.
- 4 SLOPE SLAB IN ALL DIRECTIONS 1:48 MAX.
- 5 SLOPE IN DIRECTION OF TRAVEL MAX. 1:20, CROSS SLOPE 1:48 MAX.
- 6 INSTALL NEW SINK AND FAUCET. TOP OF SINK SHALL NOT EXCEED 34" AFF. MAX., BOTTOM OF SINK SHALL BE 29" AFF. MIN. PER CBC 11B-306.3.3, ADJUST AND CONNECT EXISTING WATER SUPPLY PIPING. PROVIDE NEW CARRIER SUPPORT.
- 7 CLEAR FLOOR SPACE SHALL BE 30"x48" PER CBC 11B-305.3
- 8 60" PULL-OUT & TURNING SPACE. SLOPE IN THIS AREA NOT TO EXCEED 1:48 MAX. IN ALL DIRECTIONS.
- 9 PAINT A 4" BLUE (FS15090) STRIPE, (3) SIDES OF PARKING SPACE.
- 10 NEW TO EXISTING ASPHALT PAVING, SEE DETAIL 9/C501.
- 11 NEW ADA VAN ACCESSIBLE PARKING SIGNAGE, SEE DETAIL 12/C501.
- 12 ACCESS AISLE SHALL BE MARKED WITH A 4" BLUE (FS15090) PAINTED BORDERLINE AROUND PERIMETER OF ACCESS AISLE. STRIPING INSIDE ACCESS AISLE SHALL BE 4" WIDE, PAINTED WHITE.
- 13 NEW ASPHALT PAVING OVER GRAVEL SUB-BASE (APPROX. 820 SF), SEE 8/C501. MAXIMUM SLOPE OF NEW ASPHALT IN EACH DIRECTION EQUALS 1:48, TRANSITION NEW ASPHALT DOWN TO EXISTING ASPHALT AND/OR EXISTING GRAVEL AT 1:48 MAX. SLOPE, UNLESS NOTED OTHERWISE
- 14 INTERNATIONAL SYMBOL OF ACCESSIBILITY, SEE DETAIL 10/C501.
- 15 12" HIGH WHITE PAINTED LETTERING.

- 16 NEW UNAUTHORIZED VEHICLE PARKING SIGNAGE, SEE 12/C501.
- 17 ADJUST PUSH BUTTON CONTROLS TO OPERATE WITH 5# OR LESS OF PRESSURE AND SHALL OPERATE FLOW MIN. OF 4 SECONDS.
- 18 PROVIDE NEW WATER SUPPLY PIPING FROM CAPPED WATER SUPPLY AT DEMOLISHED SPIGOT TO NEW DRINKING FOUNTAIN. PATCH ASPHALT AFTER INSTALLATION OF NEW WATER LINE.
- 19 36"x48" TRUNCATED DOME SET IN CONCRETE, SEE DETAIL 2/C101.
- 20 REPAIR EXISTING LANDSCAPING AFTER INSTALLATION OF NEW WATER LINE.
- 21 MATCH (E) CONCRETE ELEVATION.
- 22 DATUM REFERENCE POINT LOCATION FOR ELEVATIONS, DEFINED AS 100'-0". LOCATED AT CENTER OF (E) SIDEWALK TO (E) PAVING TRANSITION



COUNTY OF HUMBOLDT
 ADA MODIFICATIONS

Revisions:
 Client Number: 207-204
 Project Number: 85203
 Date: SEPT. 14, 2018

Sheet Title:
ENLARGED PLANS AND DETAILS
 Sheet Number: