

ATTACHMENT 4A

Water Rights Protection Plan

Water Resource Protection Plan

APN: 220-272-003

WDID: 1B170267CHUM

Prepared by:

Steven M. Jones
and
Associates

5/29/2018

Purpose

This Water Resource Protection Plan (WRPP) has been prepared on behalf of the Discharger for the

Humboldt County property identified as parcel number 220-272-003, by agreement and in response to the California Water Code Section 13260(a), which requires that any person discharging waste or proposing to discharge waste within any region that could affect the quality of the waters of the state, other than into a community sewer system, shall file with the appropriate regional water board a Report of Waste Discharge (ROWD) containing such information and data as may be required by the Regional Water Board. The Regional Water Board may waive the requirements of Water Code section 13260 for specific types of discharges if the waiver is consistent with the Basin Plan and in the public interest. Any waiver is conditional and may be terminated at any time. A waiver should include monitoring requirements to verify the adequacy and effectiveness of the waiver's conditions. Order R1-2015-0023 conditionally waives the requirement to file a ROWD for discharges and associated activities described in finding 4.

Scope of Report

Order No. R1-2015-0023 states that "Tier 2 Dischargers and Tier 3 Dischargers who intend to cultivate cannabis before, during, or following site cleanup activities shall develop and implement a water resource protection plan that contains the elements listed and addressed below. Dischargers must keep this plan on site, and produce it upon request by Regional Water Board staff. Management practices shall be properly designed and installed, and assessed periodically for effectiveness. If a management measure is found to be ineffective, the plan must be adapted and implemented to incorporate new or additional management practices to meet standard conditions. Dischargers shall certify annually to the Regional Water Board individually or through an approved third party program that the plan is being implemented and is effectively protecting water quality, and report on progress in implementing site improvements intended to bring the site into compliance with all conditions of this Order."

Methods

The methods used to develop this WRPP include both field and office components. The office component consisted of aerial photography review and interpretation, existing USGS quad map review, GIS mapping of field data, review of on-site photography points, streamflow calculations, and general planning. The field component included identifying and accurately mapping all watercourses, wet areas, and wetlands located downstream of the cultivation areas, associated facilities, and all appurtenant roads accessing such areas. An accurate location of the Waters of the State is necessary to make an assessment of whether potential and existing erosion sites/pollution sites have the potential to discharge waste to an area that could affect waters of the State (including groundwater). Next, all cultivation areas, associated facilities, and all appurtenant roads accessing such areas were assessed for discharges and related controllable water quality factors from the activities listed in Order R1-2015-0023, Finding 4a-j. The field assessment also included an evaluation and determination of compliance with the Standard Conditions per Provision I.B of Order No. R1-2015-0023. The water resource protection plans required under Tier 2 are meant to describe the specific measures a discharger implements to achieve compliance with standard conditions. Therefore, all required components of the water resource protection plan per Provision I.B of Order No. R1-2015-0023 were physically inspected and evaluated. A comprehensive summary of each Standard Condition as it relates to the subject property is appended.

Property Description

The property assessed is located in Briceland, California, at an elevation of approximately 1,800 feet. The property is located within the Southwest 1/4 of Southeast 1/4 of Section 7, Township 4 South, Range 3 East, Humboldt Base & Meridian, Humboldt County, on the Ettersburg 7.5' Quadrangle. There are no watercourses on the property.

Monitoring Plan

Tier 2 Dischargers shall include a monitoring element in the water resource protection plan that at a minimum provides for periodic inspection of the site, checklist to confirm placement and efficacy of management measures, and document progress on any plan elements subject to a time schedule. Tier 2 Dischargers shall submit an annual report (Appendix C) by March 31 of each year that documents implementation and effectiveness of management measures during the previous year. Tier 2 annual reporting is a function that may be provided through an approved third party program.

Monitoring of the site includes visual inspection and photographic documentation of each feature of interest listed on the site map, with new photographic documentation recorded with any notable changes to the feature of interest. At a minimum, all site features must be monitored annually, to provide the basis for completion of the annual re-certification process. Additionally, sites shall be monitored at the following times to ensure timely identification of changed site conditions and to determine whether implementation of additional management measures is necessary to iteratively prevent, minimize, and mitigate discharges of waste to surface water: 1) just prior to October 15 to evaluate site preparedness for storm events and storm water runoff, 2) following the accumulation of 3" total precipitation or by November 15, whichever is sooner, and 3) following any rainfall event with an intensity of 3" precipitation in 24 hours. Precipitation data can be obtained from the National Weather Service Forecast Office (e.g. by entering the zip code of the parcel location at <http://www.srh.noaa.gov/forecast>).

Monitoring Plan Reporting Requirements

Order No. R1-2015-0023, Appendix C must be submitted to the Regional Water Board or approved third party program upon initial enrollment in the Order (NOI) and annually thereafter by March 31. Forms submitted to the Regional Water Board shall be submitted electronically to northcoast@waterboards.ca.gov. If electronic submission is infeasible, hard copies can be submitted to: North Coast Regional Water Quality Control Board, 5550 Skylane Boulevard, Suite A, Santa Rosa, CA 95403.

Assessment of Standard Conditions

Assessment of Standard Conditions consisted of a field examination on May 11, 2018. The examinations evaluated areas near, and areas with the potential to directly impact, watercourses for sensitive conditions including, but not limited to, existing and proposed roads, skid trails and landings, unstable and erodible watercourse banks, unstable upslope areas, debris, jam potential, inadequate flow capacity, changeable channels, overflow channels, flood prone areas, and riparian zones. Field examinations also evaluated all roads and trails on the property, developed areas, cultivation sites, and any structures and facilities appurtenant to cultivation on the property. Anywhere the Standard Conditions are not met on the property, descriptions of the assessments and the prescribed treatments are outlined following each associated section below.

Summary of Standard Conditions Compliance

1. Site maintenance, erosion control, and drainage features Y/N
2. Stream crossing maintenance Y/N
3. Riparian and wetland protection and management Y/N
4. Spoils management Y/N
5. Water storage and use Y/N
6. Irrigation runoff Y/N
7. Fertilizers and soil amendments Y/N
8. Pesticides and herbicides Y/N
9. Petroleum products and other chemicals Y/N
10. Cultivation-related wastes Y/N
11. Refuse and human waste Y/N

A. Standard Conditions, Applicable to All Dischargers

1. Site Maintenance, erosion control and drainage features (Compliance: Y / N)

- a. Roads shall be maintained as appropriate (with adequate surfacing and drainage features) to avoid developing surface ruts, gullies, or surface erosion that results in sediment delivery to surface waters.

Physical reconnaissance of the property revealed that all roads are maintained with adequate surfacing and drainage features to avoid developing surface erosion that results in sediment delivery to surface waters. Both roads on the property are permanent rocked roads, which are gradually sloping (0-5%) and appear to receive very little surface runoff from surrounding areas. There is also an ATV trail that extends further into the property, which is also not showing any signs of surface erosion or sediment delivery to surface waters at this time.

- b. Roads, driveways, trails, and other defined corridors for foot or vehicle traffic of any kind shall have adequate ditch relief drains or rolling dips and/or other measures to prevent or minimize erosion along the flow paths and at their respective outlets.

All roads and other defined corridors appear to be adequately designed and maintained to prevent and minimize erosion along their flow paths and respective outlets.

c. Roads and other features shall be maintained so that surface runoff drains away from potentially unstable slopes or earthen fills. Where road runoff cannot be drained away from an unstable feature, an engineered structure or system shall be installed to ensure that surface flows will not cause slope failure.

Physical reconnaissance of the property revealed no unstable areas per 14CCR 895.1 of the California Forest Practice Rules handbook.

d. Roads, clearings, fill prisms, and terraced areas (cleared/developed areas with the potential for sediment erosion and transport) shall be maintained so that they are not hydrologically connected¹, as feasible, from surface waters, including wetlands, ephemeral, intermittent and perennial streams.

All roads, clearings, and fill prisms appear to be maintained so that they are not hydrologically connected to surface waters. There are no terraced areas on the property.

e. Ditch relief drains, rolling dip outlets, and road pad or terrace surfaces shall be maintained to promote infiltration/dispersal of outflows and have no apparent erosion or evidence of soil transport to receiving waters.

The road pads appear to be maintained to promote infiltration/dispersal of outflows, and have no evidence of soil transport to receiving waters. There are no ditch relief drains, rolling dips, or terraced surfaces on the property.

f. Stockpiled construction materials are stored in a location and manner so as to prevent their transport to receiving waters.

Not applicable. There are no stockpiled construction materials being stored at this time.

2. Stream Crossing Maintenance (Compliance: Y / N)

a. Culverts and stream crossings shall be sized to pass the expected 100-year peak streamflow.

¹ Connected roads are road segments that deliver road surface runoff, via the ditch or road surface, to a stream crossing or to a connected drain that occurs within the high delivery potential portion of the active road network. A connected drain is defined as any cross-drain culvert, water bar, rolling dip, or ditch-out that appears to deliver runoff to a defined channel. A drain is considered connected if there is evidence of surface flow connection from the road to a defined channel or if the outlet has eroded a channel that extends from the road to a defined channel. (http://www.forestsandfish.com/documents/Road_Mgmt_Survey.pdf)

- b. Culverts and stream crossings shall be designed and maintained to address debris associated with the expected 100-year peak streamflow.
- c. Culverts and stream crossings shall allow passage of all life stages of fish on fish-bearing or restorable streams, and allow passage of aquatic organisms on perennial or intermittent streams.
- d. Stream crossings shall be maintained so as to prevent or minimize erosion from exposed surfaces adjacent to, and in the channel and on the banks.
- e. Culverts shall align with the stream grade and natural stream channel at the inlet and outlet where feasible.²
- f. Stream crossings shall be maintained so as to prevent stream diversion in the event that the culvert/crossing is plugged, and critical dips shall be employed with all crossing installations where feasible.³

Not applicable. There are no stream crossings on the property.

3. Riparian and Wetland Protection and Management (Compliance: Y / N)

- a. For Tier 1 Dischargers, cultivation areas or associated facilities shall not be located within 200 feet of surface waters. While 200 foot buffers are preferred for Tier 2 sites, at a minimum, cultivation areas and associated facilities shall not be located or occur within 100 feet of any Class I or II watercourse or within 50 feet of any Class III watercourse or wetlands. The Regional Water Board or its or its Executive Officer may apply additional or alternative⁴ conditions on enrollment, including site-specific riparian buffers and other BMPs beyond those identified in water resource protection plans to ensure water quality protection.

The cultivation area is located approximately 200 feet from the head of a Class III watercourse.

- b. Buffers shall be maintained at natural slope with native vegetation.

All buffers appear to be maintained at natural slope with native vegetation.

² At a minimum, the culvert shall be aligned at the inlet. If infeasible to align the culvert outlet with the stream grade or channel, outlet armoring or equivalently effective means may be applied.

³ If infeasible to install a critical dip, an alternative solution may be chosen.

⁴ Alternative site-specific riparian buffers that are equally protective of water quality may be necessary to accommodate existing permanent structures or other types of structures that cannot be relocated.

c. Buffers shall be of sufficient width to filter wastes from runoff discharging from production lands and associated facilities to all wetlands, streams, drainage ditches, or other conveyances. Riparian and wetland areas shall be protected in a manner that maintains their essential functions, including temperature and microclimate control, filtration of sediment and other pollutants, nutrient cycling, woody debris recruitment, groundwater recharge, streambank stabilization, and flood peak attenuation and flood water storage.

The cultivation area is located approximately 200 feet from the head of a Class III watercourse, which appears to be of sufficient width to filter wastes from runoff, and to maintain the essential functions of the riparian areas.

4. Spoils Management (Compliance: Y / N)

a. Spoils⁵ shall not be stored or placed in or where they can enter any surface water.

There is a compost pile that contains plant waste, which appears to be adequately located and contained so that it can not enter surface waters. There were no other spoils being stored on the property at the time of assessment.

b. Spoils shall be adequately contained or stabilized to prevent sediment delivery to surface waters.

The compost pile appears to be located and maintained in a manner that adequately prevents sediment delivery to surface waters.

c. Spoils generated through development or maintenance of roads, driveways, earthen fill pads, or other cleared or filled areas shall not be sidecast in any location where they can enter or be transported to surface waters.

No spoils generated through development or maintenance of roads, driveways, earthen fill pads, or cleared or filled areas were observed anywhere on the property.

5. Water Storage and Use (Compliance: Y / N)

⁵ Spoils are waste earthen or organic materials generated through grading or excavation, or waste plant growth media or soil amendments. Spoils include but are not limited to soils, slash, bark, sawdust, potting soils, rock, and fertilizers.

a. Size and scope of an operation shall be such that the amount of water used shall not adversely impact water quality and/or beneficial uses, including and in consideration with other water use by operations, instream flow requirements and/or needs in the watershed, defined at the scale of a HUC-12⁶ watershed or at a smaller hydrologic watershed as determined necessary by the Regional Water Board Executive Officer.

Cultivation area on the property encompasses approximately 15000 ft², including the 600 ft² nursery. Water for cultivation and domestic purposes is sourced from a well with an 100 ft depth. The Discharger is utilizing several techniques to conserve water and is planning on installing a rain catchment system.

b. Water conservation measures shall be implemented. Examples include use of rainwater catchment systems or watering plants with a drip irrigation system rather than with a hose or sprinkler system.

The Discharger utilizes drip line irrigation, mulches bare soil surfaces, and irrigates during the early morning to minimize water usage.

c. For Tier 2 Dischargers, if possible, develop off-stream storage facilities to minimize surface water diversion during low flow periods.

The Discharger does not divert surface water at any time. A well is utilized as the sole source of water for domestic and cultivation purposes.

d. Water is applied using no more than agronomic rates.⁷

The Discharger states that water is applied using no more than agronomic rates.

e. Diversion and/or storage of water from a stream should be conducted pursuant to a valid water right and in compliance with reporting requirements under Water Code section 5101.

Water is not diverted from a stream at any time. The Discharger is complying with the reporting requirements under Water Code section 5101.

f. Water storage features, such as ponds, tanks, and other vessels shall be selected, sited, designed, and maintained so as to insure integrity and to prevent release into waters of the state in the event of a containment failure.

⁶ See definition and link to maps at: <http://water.usgs.gov/GIS/huc.html>

⁷ "Agronomic rates" is defined as the rates of fertilizer and irrigation water that a plant needs to enhance soil productivity and provide the crop or forage growth with needed nutrients for optimum health and growth, without having any excess water or nutrient percolate beyond the root zone.

All water storage vessels are rigid plastic tanks, and 1 farris tank, which are to be selected, sited, designed and maintained so as to prevent release into waters of the state in the event of a containment failure.

6. Irrigation Runoff (Compliance: Y / N)

Implementing water conservation measures, irrigating at agronomic rates, applying fertilizers at agronomic rates and applying chemicals according to the label specifications, and maintaining stable soil and growth media should serve to minimize the amount of runoff and the concentration of chemicals in that water. In the event that irrigation runoff occurs, measures shall be in place to treat/control/contain the runoff to minimize the pollutant loads in the discharge. Irrigation runoff shall be managed so that any entrained constituents, such as fertilizers, fine sediment and suspended organic particles, and other oxygen consuming materials are not discharged to nearby watercourses. Management practices include, but are not limited to, modifications to irrigation systems that reuse tailwater by constructing off-stream retention basins, and active (pumping) and or passive (gravity) tailwater recapture/redistribution systems. Care shall be taken to ensure that irrigation tailwater is not discharged towards or impounded over unstable features or landslides.

No irrigation runoff was observed during the inspection, nor was there evidence that it had occurred in the past. The Discharger shall ensure that water and fertilizers are applied at or below standard agronomic rates, thus minimizing pollutant entrainment and preventing any irrigation runoff from occurring.

7. Fertilizers and Soil Amendments (Compliance: Y / N)

a. Fertilizers, potting soils, compost, and other soils and soil amendments shall be stored in locations and in a manner in which they cannot enter or be transported into surface waters and such that nutrients or other pollutants cannot be leached into groundwater.

Fertilizers and soil amendments are adequately stored in the storage structure, which is an adequate storage location to prevent any pollutants from being transported to surface waters or leached into ground water.

b. Fertilizers and soil amendments shall be applied and used per packaging instructions and/or at proper agronomic rates.

The Discharger states that fertilizers and soil amendments are applied and used below packaging instructions and/or at proper agronomic rates.

c. Cultivation areas shall be maintained so as to prevent nutrients from leaving the site during the growing season and post-harvest.

The cultivation area appears to be very well maintained and in a manner so as to prevent nutrients from leaving the site during the growing season and post-harvest. Soil, fertilizers, and amendments are all adequately contained. The areas surrounding the cultivation area

are all densely vegetated, which further prevents nutrients or any other pollutants from leaving the site at any time.

8. Pesticides/Herbicides (Compliance: Y / N)

At the present time, there are no pesticides or herbicides registered specifically for use directly on cannabis and the use of pesticides on cannabis plants has not been reviewed for safety, human health effects, or environmental impacts. Under California law, the only pesticide products not illegal to use on cannabis are those that contain an active ingredient that is exempt from residue tolerance requirements and either registered and labeled for a broad enough use to include use on cannabis or exempt from registration requirements as a minimum risk pesticide under FIFRA section 25(b) and California Code of Regulations, title 3, section 6147. For the purpose of compliance with conditions of this Order, any uses of pesticide products shall be consistent with product labeling and any products on the site shall be placed, used, and stored in a manner that ensures that they will not enter or be released into surface or ground waters.

Pesticides and herbicides are adequately stored in the storage structure, which is an adequate storage location to prevent any pollutants from being transported to surface waters or leached into ground water. The Discharger shall ensure that all pesticides and herbicides are used at or below the specifications on the product's label, and that they are placed, and used in a manner that ensures that they will not enter or be released into surface or ground waters.

9. Petroleum products and other chemicals (Compliance: Y / N)

a. Petroleum products and other liquid chemicals, including but not limited to diesel, biodiesel, gasoline, and oils shall be stored so as to prevent their spillage, discharge, or seepage into receiving waters. Storage tanks and containers must be of suitable material and construction to be compatible with the substance(s) stored and conditions of storage such as pressure and temperature.

The only petroleum products on the property are several 2-5 gallon portable gasoline canisters, which are adequately stored in the storage structure. Fertilizers and pesticides are adequately stored in the storage structure as well.

b. Above ground storage tanks and containers shall be provided with a secondary means of containment for the entire capacity of the largest single container and sufficient freeboard to contain precipitation.

All containers are stored in the storage structure, which appears to be an adequate means of secondary containment for the small gasoline canisters.

c. Dischargers shall ensure that diked areas are sufficiently impervious to contain discharged chemicals.

Not applicable. There are no diked areas on the property with the purpose of containing discharged chemicals.

d. Discharger(s) shall implement spill prevention, control, and countermeasures (SPCC) and have appropriate cleanup materials available onsite.

Not applicable. The Discharger does not have any fuel storage tanks that require implementation of spill prevention, control, and countermeasures (SPCC), or to have appropriate cleanup materials available onsite.

e. Underground storage tanks 110 gallons and larger shall be registered with the appropriate County Health Department and comply with State and local requirements for leak detection, spill overflow, corrosion protection, and insurance coverage.

Not applicable. There are no underground storage tanks 110 gallons or larger on the property.

10. Cultivation-related wastes (Compliance: Y / N)

Cultivation-related wastes including, but not limited to, empty soil/soil amendment/ fertilizer/ pesticide bags and containers, empty plant pots or containers, dead or harvested plant waste, and spent growth medium shall, for as long as they remain on the site, be stored⁸ at locations where they will not enter or be blown into surface waters, and in a manner that ensures that residues and pollutants within those materials do not migrate or leach into surface water or ground waters.

Organic wastes are either burned or composted. All other cultivation related wastes are adequately stored prior to disposal at an appropriate waste disposal location. The entire property is void of loose garbage and appears to be very well maintained.

11. Refuse and human waste (Compliance: Y / N)

a. Disposal of domestic sewage shall meet applicable County health standards, local agency management plans and ordinances, and/or the Regional Water Board's Onsite Wastewater Treatment System (OWTS) policy, and shall not represent a threat to surface water or groundwater.

A permitted septic system is utilized for the disposal of domestic sewage.

b. Refuse and garbage shall be stored in a location and manner that prevents its discharge to receiving waters and prevents any leachate or contact water from entering or percolating to receiving waters.

⁸ Plant waste may also be composted, subject to the same restrictions cited above for cultivation-related waste storage.

Refuse and garbage is adequately stored in contractor bags and/or lidded trash bins, which is adequate to prevent discharge to receiving waters and to prevent leachate or contact water from entering or percolating to receiving waters.

c. Garbage and refuse shall be disposed of at an appropriate waste disposal location.

The Discharger states that all garbage and refuse is disposed of at an appropriate waste disposal location.

12. Remediation/Cleanup/Restoration

Remediation/cleanup/restoration activities may include, but are not limited to, removal of fill from watercourses, stream restoration, riparian vegetation planting and maintenance, soil stabilization, erosion control, upgrading stream crossings, road outcropping and rolling dip installation where safe and suitable, installing ditch relief culverts and overside drains, removing berms, stabilizing unstable areas, reshaping cutbanks, and rocking native-surfaced roads. Restoration and cleanup conditions and provisions generally apply to Tier 3 sites, however owners/operators of Tier 1 or 2 sites may identify or propose water resource improvement or enhancement projects such as stream restoration or riparian planting with native vegetation and, for such projects, these conditions apply similarly. Appendix B accompanying this Order includes environmental protection and mitigation measures that apply to cleanup activities such as: temporal limitations on construction; limitations on earthmoving and construction equipment; guidelines for removal of plants and revegetation; conditions for erosion control, limitations on work in streams, riparian and wetland areas; and other measures.

Mitigation measures are listed below in the Mitigation Report and also explained above in the Standard Conditions.

Identified Sites Requiring Remediation (See Standard Conditions Assessment)

Unique Map Point(s)	Map Point Description	Associated Standard Condition	Temporary BMP	Permanent BMP	Priority for Action	Time Schedule for completion of Permanent BMP	Completion Date
N/A	In compliance with all Standard Conditions at this time.	N/A	N/A	N/A	N/A		

Treat Priority: Treatment Priority (1) indicates a very high priority with treatment being planned to occur immediately, (2) indicates a high priority site with treatment to occur prior to the start of the winter period (Nov. 15), (3) indicates a moderate priority with treatment being planned to occur within one year, or prior to the winter period (Nov. 15) of the 2nd season of operations, and (4) indicates a low priority with treatment being planned to occur in the shortest time possible, but no later than the expiration of this Order (five years).

BMP: General BMPs

- If operations require moving of equipment across a flowing stream, such operations shall be conducted without causing a prolonged visible increase in stream turbidity. For repeated crossings, the operator shall install a bridge, culvert, or rock-lined crossing.
- During construction in flowing water, which can transport sediment downstream, the flow shall be diverted around the work area by pipe, pumping, temporary diversion channel or other suitable means. When any dam or artificial obstruction is being constructed, maintained, or placed in operation, sufficient water shall at all times be allowed to pass downstream to maintain fish life below the dam. Equipment may be operated in the channel of flowing live streams only as necessary to construct the described construction.
- Disturbance or removal of vegetation shall not exceed the minimum necessary to complete operations. The disturbed portion of any stream channel shall be restored to as near their original condition as possible. Restoration shall include the mulching of stripped or exposed dirt areas at crossing sites prior to the end of the work period.
- Structures and associated materials not designed to withstand high seasonal flow shall be removed to areas above the high water mark before such flows occur.
- No debris, soil, silt, sand, bark, slash, sawdust, rubbish, cement or concrete washing, oil or petroleum products, or other organic or earthen material from any logging, construction, or associated activity of whatever nature shall be allowed to enter into or be placed where it may be washed by rainfall or runoff into waters of the State. When operations are completed, any excess materials or debris shall be removed from the work area. No rubbish shall be deposited within 150 feet of the high water mark of any stream.

BMP: General Erosion Control

- Timing for soil stabilization measures within the 100 feet of a watercourse or lake: For areas disturbed from May 1 through October 15, treatment shall be completed prior to the start of any rain that causes overland flow across or along the disturbed surface. For areas disturbed from October 16 through April 30, treatment shall be completed prior to any day for which a chance of rain of 30 percent or greater is forecast by the National Weather Service or within 10 days, whichever is earlier.
- Within 100 feet of a watercourse or lake, the traveled surface of logging roads shall be treated to prevent waterborne transport of sediment and concentration of runoff that results from operations. Treatment may consist of, but not limited to, rocking, out sloping, rolling dips, cross drains, water bars, slope stabilization measures, or other practices appropriate to site-specific conditions.
- The treatment for other disturbed areas within 100 feet of a watercourse or lake, including: (A) areas exceeding 100 contiguous square feet where operations have exposed bare soil, (B) approaches to road watercourse crossings out to 100 feet or the nearest drainage facility, whichever is farthest, (C) road cut banks and fills, and (D) any other area of disturbed soil that threatens to discharge sediment into waters in amounts deleterious to the quality and beneficial uses of water, shall be grass seeded and mulched with straw or fine slash. Grass seed shall be applied at a rate exceeding 100 pounds per acre. Straw mulch shall be applied in amounts sufficient to provide at least 2- 4-inch depth of straw with minimum 90% coverage. Slash may be substituted for straw mulch provided the depth, texture, and ground contact are equivalent to at least 2 – 4 inches of straw mulch. Any treated area that has been subject to reuse or has less than 90% surface cover shall be treated again prior to the end of operations.
- Within 100 feet of a watercourse or lake, where the undisturbed natural ground cover cannot effectively protect beneficial uses of water from operations, the ground shall be treated with slope stabilization measures described in #3 above per timing described in #1 above.
- Side cast or fill material extending more than 20 feet in slope distance from the outside edge of a landing which has access to a watercourse or lake shall be treated with slope stabilization measures described in #3 above. Timing shall occur per #1 above unless outside 100 feet of a watercourse or lake, in which completion date is October 15.

All roads shall have drainage and/or drainage collection and storage facilities installed as soon as practical following operations and prior to either (1) the start of any rain which causes overland flow across or along the disturbed surface within 100 feet of a watercourse or lake protection, or (2) any day with a National Weather Service forecast of a chance of rain of 30 percent or more, a flash flood warning, or a flash flood watch.

STRAW MULCHING

What is it?

The application of straw as a protective cover over seeded areas to reduce erosion and aid in revegetation or over bare soils that will be landscaped later to reduce erosion.

When is it used?

This method is used on slopes which have been seeded and have high potential for erosion. It requires some type of anchoring by matting, crimping or other methods to prevent blowing or washing away.

Straw mulch forms a loose layer when applied over a loose soil surface. To protect the mulch from wind drifting and being moved by water, it must be covered with a netting such as plastic or punched into the soil with a spade or roller, or by spraying it with a tackling agent. The mulch should cover the entire seed or bare area. The mulch should extend into existing vegetation or be stabilized on all sides to prevent wind or water damage which may start at the edges.

Methods and Materials:

On gentle to moderate slopes, straw mulch can be applied by hand broadcasting to a uniform depth of 2 - 3 inches. On steep slopes, the straw should be blown onto the slope to achieve the same degree of cover. When applied properly, approximately 20-40 percent of the original ground surface can be seen. The application rate per acre should be about 2 tons (or one 74 pound bale per 800 square feet). Straw should be clean rice, barley, or wheat straw.

Anchoring of straw mulch can be accomplished using the following methods:

Hand Punching:

A spade or shovel is used to punch straw into the slope until all areas have straw standing perpendicular to the slope and embedded at least 4 inches into the slope. It should be punched about 12 inches apart.

Roller Punching:

A roller equipped with straight studs not less than 6 inches long, from 4 - 6 inches wide and approximately one inch thick is rolled over the slope.

Crimper Punching:

Like roller punching, the crimper has serrated disk blades about 4 - 8 inches apart which force straw mulch into the soil. Crimping should be done in two directions with the final pass across the slope.

Matting:

Matting is used on large, steep areas which cannot be punched with a roller or by hand. A wood excelsior or plastic netting is applied over unpunched straw.

Where to Get Help:

Technical Assistance is available from your local USDA Natural Resources Conservation Service office or your local Resource Conservation District regarding this practice and other treatments.

July 2002 Arizona



TIMBERLAND RESOURCE CONSULTANTS

165 S. FORTUNA BLVD., SUITE 4
FORTUNA, CA 95540
PH. 707-725-1897

COAST CENTRAL CREDIT UNION
90-72247

14183

9/25/2019

PAY TO THE
ORDER OF

California Dept. of Fish & Wildlife

\$ **596.00

Five Hundred Ninety-Six and 00/100*****

DOLLARS

California Dept. of Fish & Wildlife
619 Second Street
Eureka, CA 95501

Ramin Kepon
AUTHORIZED SIGNATURE

MEMO

⑈014183⑈ ⑆321172248⑆

⑆25400915753⑈

TIMBERLAND RESOURCE CONSULTANTS

14183

California Dept. of Fish & Wildlife

9/25/2019

APN 220-272-003 CDFW 1600 Fee

596.00

Coast Central Checkin

596.00

TIMBERLAND RESOURCE CONSULTANTS

14183

California Dept. of Fish & Wildlife

9/25/2019

APN 220-272-003 CDFW 1600 Fee

596.00

Coast Central Checkin

596.00



FOR DEPARTMENT USE ONLY				
Date Received	Amount Received	Amount Due	Date Complete	Notification No.
	\$	\$		
Assigned to:				

NOTIFICATION OF LAKE OR STREAMBED ALTERATION

Complete EACH field, unless otherwise indicated, following the [instructions](#) and submit ALL required enclosures, attachments, and fee(s) to the [CDFW regional or field office](#) that serves the area where the project will occur. Attach additional pages to notification, if necessary.

1. APPLICANT PROPOSING PROJECT

Name	Steven Jones
Business/Agency	
Mailing Address	PO Box 2204
City, State, Zip	Redway, CA, 95560
Phone Number	360-907-8695
Email	stevenmjonesnocal@yahoo.com

2. CONTACT PERSON *(Complete only if different from applicant.)*

Name	Chris Carroll
Business/Agency	Timberland Resource Consultants
Mailing Address	165 South Fortuna Blvd
City, State, Zip	Fortuna, Ca, 95540
Phone Number	707-725-1897
Email	carroll@timberlandresource.com

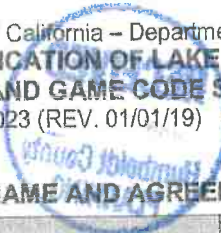
While an applicant is legally responsible for complying with Fish and Game Code section 1602 et seq., an applicant may designate and authorize an agent (e.g., lawyer, consultant, or other individual) to act as a Designated Representative. The Designated Representative is authorized to sign the notification and any agreement on behalf of the Applicant.

Do you authorize the Contact Person above to represent you as your Authorized Designated Representative?

Yes, I authorize.
 No, I do not authorize.

3. PROPERTY OWNER *(Complete only if different from applicant)*

Name	
Mailing Address	
City, State, Zip	
Phone Number	
Email	



4. PROJECT NAME AND AGREEMENT TERM

A. Project Name		APN 220-272-003			
B. Agreement Term Requested		<input checked="" type="checkbox"/> Regular (5 years or less) <input type="checkbox"/> Long-term (greater than 5 years)			
C. Project Term		Beginning (year)	2019	Ending (year)	2024
D. Seasonal Work Period					
Season(s)*	Start Date (month/day)	End Date (month/day)		E. Number of Work Days	
1	06/15	10/15		122	
2	06/15	10/15		122	
3	06/15	10/15		122	
4	06/15	10/15		122	
5	06/15	10/15		122	

* Continue on additional page(s) if necessary

5. AGREEMENT TYPE

Check the applicable box. If boxes B – F are checked, complete the specified attachment.

A.	<input checked="" type="checkbox"/> Standard (Most construction projects, excluding the categories listed below)	
B.	<input type="checkbox"/> Gravel/Sand/Rock Extraction (Attachment A)	Mine I.D. Number: _____
C.	<input type="checkbox"/> Timber Harvesting (Attachment B)	THP Number: _____
D.	<input checked="" type="checkbox"/> Water Diversion/Extraction/Impoundment (Attachment C)	SWRCB Number: _____
E.	<input type="checkbox"/> Routine Maintenance (Attachment D)	
F.	<input checked="" type="checkbox"/> Cannabis Cultivation (Attachment E)	
G.	<input type="checkbox"/> CDFW Grant Programs	Agreement Number: _____
H.	<input type="checkbox"/> Master	
I.	<input type="checkbox"/> Master Timber Operations	



6. FEES

See the [current fee schedule](#) to determine the appropriate notification fee. Itemize each project's estimated cost and corresponding fee. **Note: CDFW may not process this notification until the correct fee has been received.**

A. Project Name		B. Project Cost	C. Project Fee
1	Groundwater Well		\$596.00
2			
3			
4			
5			
6			
7			
8			
9			
10			
		D. Base Fee (if applicable)	
		E. TOTAL FEE*	\$596.00

* Check, money order, and [Visa or MasterCard](#) (select Environmental Fees from Menu) payments are accepted.

7. PRIOR NOTIFICATION AND ORDERS

A. Has a notification previously been submitted to, or a Lake or Streambed Alteration Agreement previously been issued by, CDFW for the project described in this notification?

Yes (Provide the information below) No

Applicant	Notification Number	Date

B. Is this notification being submitted in response to a court or administrative order or notice, or a notice of violation (NOV) issued by CDFW?

Yes No (Enclose a copy of the order, notice, or NOV. If the applicant was directed to notify CDFW verbally rather than in writing, identify the person who directed the applicant to submit this notification, the agency he or she represents, and describe the circumstances relating to the order.)

Name of person who directed notification	Agency

Describe circumstances relating to order

Continued on additional page(s)



8. PROJECT LOCATION

A. Address or description of project location.
(Include a map that marks the location of the project with a reference to the nearest city or town, and provide driving directions from a major road or highway.)

Take Briceland Road to Perry Meadow Road. Continue approximately 1.3 miles to the four way intersection. Take a left at the intersection and continue down Perry Lane for approximately 0.8 miles to Elk Ridge Road.

See attached Location Map.

Continued on additional page(s)

B. River, stream, or lake affected by the project. Unnamed Class III watercourse

C. What water body is the river, stream, or lake tributary to? Redwood Creek - South Fork Eel River

D. Is the river or stream segment affected by the project listed in the state or federal [Wild and Scenic Rivers Acts](#)? Yes No Unknown

E. County	Humboldt			
F. USGS 7.5 Minute Quad Map Name	G. Township	H. Range	I. Section	J. ¼ Section
Briceland	4S	3E	7	SW & NW

Continued on additional page(s)

K. Meridian (check one) Humboldt Mt. Diablo San Bernardino

L. Assessor's Parcel Number(s)

220-272-003

Continued on additional page(s)

M. Geographic coordinates *(Provide the latitude and longitude coordinates for the property where the project(s) will take place. CDFW utilizes decimal degrees and WGS 84 datum. Access [Google Maps Help](#) if you need assistance in finding your coordinates.)*

Latitude/Longitude	Latitude: See Addendum 8M	Longitude: 122° 42' 30" W
	Latitude: 40° 42' 30" N	Longitude: 122° 42' 30" W
	Latitude: 40° 42' 30" N	Longitude: 122° 42' 30" W
	Latitude: 40° 42' 30" N	Longitude: 122° 42' 30" W
	Latitude: 40° 42' 30" N	Longitude: 122° 42' 30" W



9. PROJECT CATEGORY

WORK TYPE	NEW CONSTRUCTION	REPLACE EXISTING STRUCTURE	REPAIR-MAINTAIN-OPERATE EXISTING STRUCTURE
Bank stabilization – bioengineering/recontouring	<input type="checkbox"/>	<input type="checkbox"/>	<input type="checkbox"/>
Bank stabilization – rip-rap/retaining wall/gabion	<input type="checkbox"/>	<input type="checkbox"/>	<input type="checkbox"/>
Boat dock/pier	<input type="checkbox"/>	<input type="checkbox"/>	<input type="checkbox"/>
Boat ramp	<input type="checkbox"/>	<input type="checkbox"/>	<input type="checkbox"/>
Bridge	<input type="checkbox"/>	<input type="checkbox"/>	<input type="checkbox"/>
Channel clearing/vegetation management	<input type="checkbox"/>	<input type="checkbox"/>	<input type="checkbox"/>
Culvert	<input type="checkbox"/>	<input type="checkbox"/>	<input type="checkbox"/>
Debris basin	<input type="checkbox"/>	<input type="checkbox"/>	<input type="checkbox"/>
Dam	<input type="checkbox"/>	<input type="checkbox"/>	<input type="checkbox"/>
Filling of wetland, river, stream, or lake	<input type="checkbox"/>	<input type="checkbox"/>	<input type="checkbox"/>
Geotechnical survey	<input type="checkbox"/>	<input type="checkbox"/>	<input type="checkbox"/>
Habitat enhancement – revegetation/mitigation	<input type="checkbox"/>	<input type="checkbox"/>	<input type="checkbox"/>
Levee	<input type="checkbox"/>	<input type="checkbox"/>	<input type="checkbox"/>
Low water crossing	<input type="checkbox"/>	<input type="checkbox"/>	<input type="checkbox"/>
Road/trail	<input type="checkbox"/>	<input type="checkbox"/>	<input type="checkbox"/>
Sediment removal: pond, stream, or marina	<input type="checkbox"/>	<input type="checkbox"/>	<input type="checkbox"/>
flood control	<input type="checkbox"/>	<input type="checkbox"/>	<input type="checkbox"/>
Storm drain outfall structure	<input type="checkbox"/>	<input type="checkbox"/>	<input type="checkbox"/>
Temporary stream crossing	<input type="checkbox"/>	<input type="checkbox"/>	<input type="checkbox"/>
Utility crossing: horizontal directional drilling	<input type="checkbox"/>	<input type="checkbox"/>	<input type="checkbox"/>
jack/bore	<input type="checkbox"/>	<input type="checkbox"/>	<input type="checkbox"/>
open trench	<input type="checkbox"/>	<input type="checkbox"/>	<input type="checkbox"/>
Water diversion without facility	<input type="checkbox"/>	<input type="checkbox"/>	<input type="checkbox"/>
Water diversion with facility	<input type="checkbox"/>	<input type="checkbox"/>	<input type="checkbox"/>
Other (specify): Groundwater Well	<input type="checkbox"/>	<input type="checkbox"/>	<input checked="" type="checkbox"/>



10. PROJECT DESCRIPTION

- A. Describe the project in detail. Include photographs of the project location and immediate surrounding area.
- Written description of all project activities with detailed step-by-step description of project implementation.
 - Include any structures (e.g., rip-rap, culverts) that will be placed or modified in or near the stream, river, or lake, and any channel clearing.
 - Specify volume, and dimensions of all materials and features (e.g., rip rap fields) that will be used or installed.
 - If water will be diverted or drafted, specify the purpose or use and include [Attachment C](#).
 - Enclose diagrams, drawings, design plans, construction specifications, and maps that provide all of the following: site specific construction details; dimensions of each structure and/or extent of each activity in the bed, channel, bank or floodplain; overview of the entire project area (i.e., "bird's-eye view") showing the location of each structure and/or activity, significant area features, stockpile areas, areas of temporary disturbance, and where the equipment/machinery will access the project area.
 - A helpful resource to assist in the development of quality PDF maps in Google Earth. See [Using Google Earth to Map your Property \(PDF\)](#).

No work proposed.

Continued on additional page(s)

B. Specify the equipment and machinery that will be used to complete the project.

No work proposed.

Continued on additional page(s)

C. Will water be present during the proposed work period (specified in box 4.D) in the stream, river, or lake (specified in box 8.B).

Yes No (Skip to box 11)

D. Will the project require work in the wetted portion of the channel?

Yes (Enclose a plan to divert water around work site)
 No



11. PROJECT IMPACTS

A. Describe impacts to the bed, channel, and bank of the river, stream, or lake, and the associated riparian habitat. Specify the dimensions of the modifications in length (linear feet) and area (square feet or acres) and the type and volume of material (cubic yards) that will be moved, displaced, or otherwise disturbed, if applicable.

No work proposed.

Continued on additional page(s)

B. Will the project affect any vegetation?

Yes (Complete the tables below) No (Include aerial photo with date supporting this determination)

Vegetation Type	Temporary Impact	Permanent Impact
	Linear feet: _____ Total area: _____	Linear feet: _____ Total area: _____
	Linear feet: _____ Total area: _____	Linear feet: _____ Total area: _____

Tree Species	Number of Trees to be Removed	Trunk Diameter (range)

Continued on additional page(s)

C. Are any special status animal or plant species, or habitat that could support such species, known to be present on or near the project site?

Yes (List each species and/or describe the habitat below) No Unknown

Anadromous Salmonids downstream.

Continued on additional page(s)

D. Identify the source(s) of information that supports a "yes" or "no" answer above in Box 11.C.

CNDDDB and local knowledge.

Continued on additional page(s)

E. Has a biological study been completed for the project site?

Yes (Enclose the biological study) No

Note: A biological assessment or study may be required to evaluate potential project impacts on biological resources.



F. Has one or more technical studies (e.g., engineering, hydrologic, geological, or geomorphological) been completed for the project or project site?

Yes (Enclose the study(ies)) No

Note: One or more technical studies may be required to evaluate potential project impacts to a lake or streambed.

G. Have fish or wildlife resources or waters of the state been mapped or delineated on the project site?

Yes (Enclose the mapped results) No

Note: Check "yes" if fish and wildlife resources or waters of the state on the project site have been mapped or delineated. "Wildlife" means and includes all wild animals, birds, plants, fish, amphibians, reptiles and related ecological communities, including the habitat upon which the wildlife depends." (Fish & G. Code, § 89.5.) If "yes" is checked, submit the mapping or delineation. If the mapping or delineation is in digital format (e.g., GIS shape files or KMZ), you must submit the information in this format for CDFW to deem your notification complete. If "no" is checked, or the resolution of the mapping or delineation is insufficient, CDFW may request mapping or delineation (in digital or non-digital format), or higher resolution mapping or delineation for CDFW to deem the notification complete.

12. MEASURES TO PROTECT FISH, WILDLIFE, AND PLANT RESOURCES

A. Describe the techniques that will be used to prevent sediment, hazardous, or other deleterious materials from entering watercourses during and after construction.

No work proposed.

Continued on additional page(s)

B. Describe project avoidance and/or minimization measures to protect fish, wildlife, and plant resources.

No work proposed.

Continued on additional page(s)

C. Describe any project mitigation and/or compensation measures to protect fish, wildlife, and plant resources.

No work proposed.

Continued on additional page(s)



13. PERMITS

List any local, State, and federal permits required for the project and check the corresponding box(es). Enclose a copy of each permit that has been issued.

- A. Humboldt County Commercial Marijuana Land Use Ordinance Applied Issued
- B. Water Quality Control Board Order No. 2017-0023 Applied Issued
- C. CDFA Cannabis Cultivation License Applied Issued
- D. Unknown whether local, State, or federal permit is needed for the project. (Check each box that applies)
 Continued on additional page(s)

14. ENVIRONMENTAL REVIEW

A. Has a **CEQA** lead agency been determined? Yes (Complete boxes B, C, D, E, and F) No (Skip to box 14.G)

B. CEQA Lead Agency State Water Resources Control Board

C. Contact Person Mathias St. John D. Phone Number 707-570-3762

E. Has a draft or final document been prepared for the project pursuant to CEQA and/or NEPA?

- Yes (Check the box below for each CEQA or NEPA document that has been prepared and enclose a copy of each.)
- No (Check the box below for each CEQA or NEPA document listed below that will be or is being prepared.)

- | | | |
|---|--|---|
| <input type="checkbox"/> Notice of Exemption | <input checked="" type="checkbox"/> Mitigated Negative Declaration | <input type="checkbox"/> NEPA document (type):
_____ |
| <input type="checkbox"/> Initial Study | <input type="checkbox"/> Environmental Impact Report | |
| <input type="checkbox"/> Negative Declaration | <input type="checkbox"/> Notice of Determination (Enclose) | |
| <input type="checkbox"/> THP/ NTMP | <input type="checkbox"/> Mitigation, Monitoring, & Reporting Plan | |

F. **State Clearinghouse Number** (if applicable) No. 2017042022

G. If the project described in this notification is not the "whole project" or action pursuant to CEQA, briefly describe the entire project (Cal. Code Regs., tit. 14 § 15378).

See Addendum 10's discussion of California State Water Resources Control Board Order No. 2017-0023-DWQ, General Waste Discharge Requirements and Waiver of Waste Discharge Requirements for Discharges of Waste Associated with Cannabis Cultivation Activities.

Continued on additional page(s)



H. Has a CEQA filing fee been paid pursuant to Fish and Game Code section 711.4?

- Yes (Enclose proof of payment) No (Briefly explain below the reason a CEQA filing fee has not been paid)

Note: The CEQA filing fee is in addition to the notification fee. If a CEQA filing fee is required, the Lake or Streambed Alteration Agreement may not be finalized until paid.

15. SITE INSPECTION

Check one box only.

- In the event CDFW determines that a site inspection is necessary, I hereby authorize a CDFW representative to enter the property where the project described in this notification will take place at any reasonable time, and hereby certify that I am authorized to grant CDFW such entry.
- I request CDFW to first contact (insert name) Chris Carroll at (insert phone number or email address) 707-725-1897 or carroll@timberlandresource.com to schedule a date and time to enter the property where the project described in this notification will take place. I understand that this may delay CDFW's determination as to whether a Lake or Streambed Alteration Agreement is required and/or CDFW's issuance of a draft agreement pursuant to this notification.

16. DIGITAL FORMAT

Is any of the information included as part of the notification available in digital format (i.e., CD, DVD, etc.)?

- Yes (Please enclose the information via digital media with the completed notification form.)
 No

17. SIGNATURE

I hereby certify that to the best of my knowledge the information in this notification is true and correct and that I am authorized to sign this notification as, or on behalf of, the applicant. I understand that if any information in this notification is found to be untrue or incorrect, CDFW may suspend processing this notification or suspend or revoke any draft or final Lake or Streambed Alteration Agreement issued pursuant to this notification. I understand also that if any information in this notification is found to be untrue or incorrect and the project described in this notification has already begun, I and/or the applicant may be subject to civil or criminal prosecution. I understand that this notification applies only to the project(s) described herein and that I and/or the applicant may be subject to civil or criminal prosecution for undertaking any project not described herein unless CDFW has been separately notified of that project in accordance with Fish and Game Code section 1602 or 1611.

Chris Carroll
 Signature of Applicant or Applicant's Authorized Representative

9-25-19
 Date

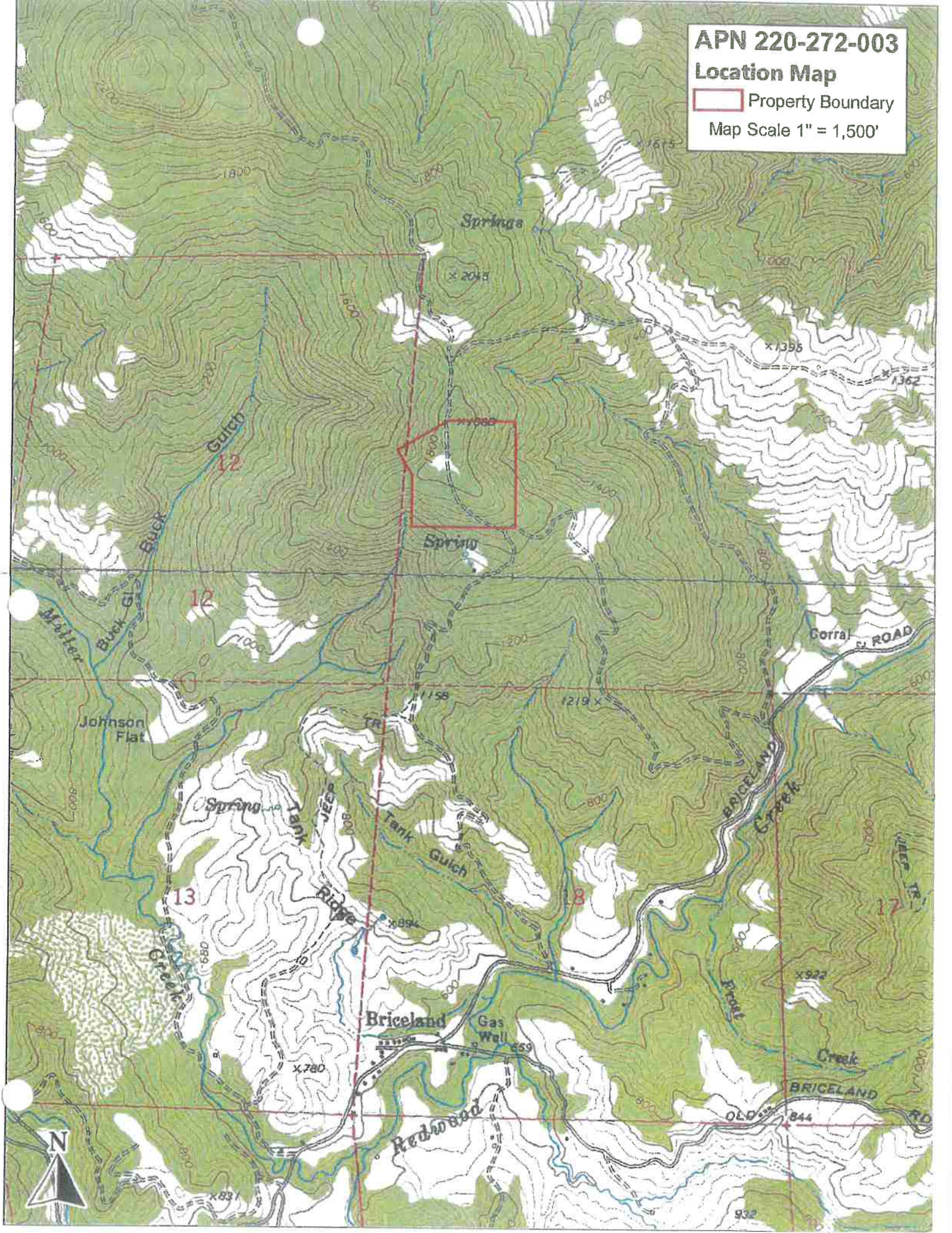
Chris Carroll
 Print Name

APN 220-272-003

Location Map

 Property Boundary

Map Scale 1" = 1,500'

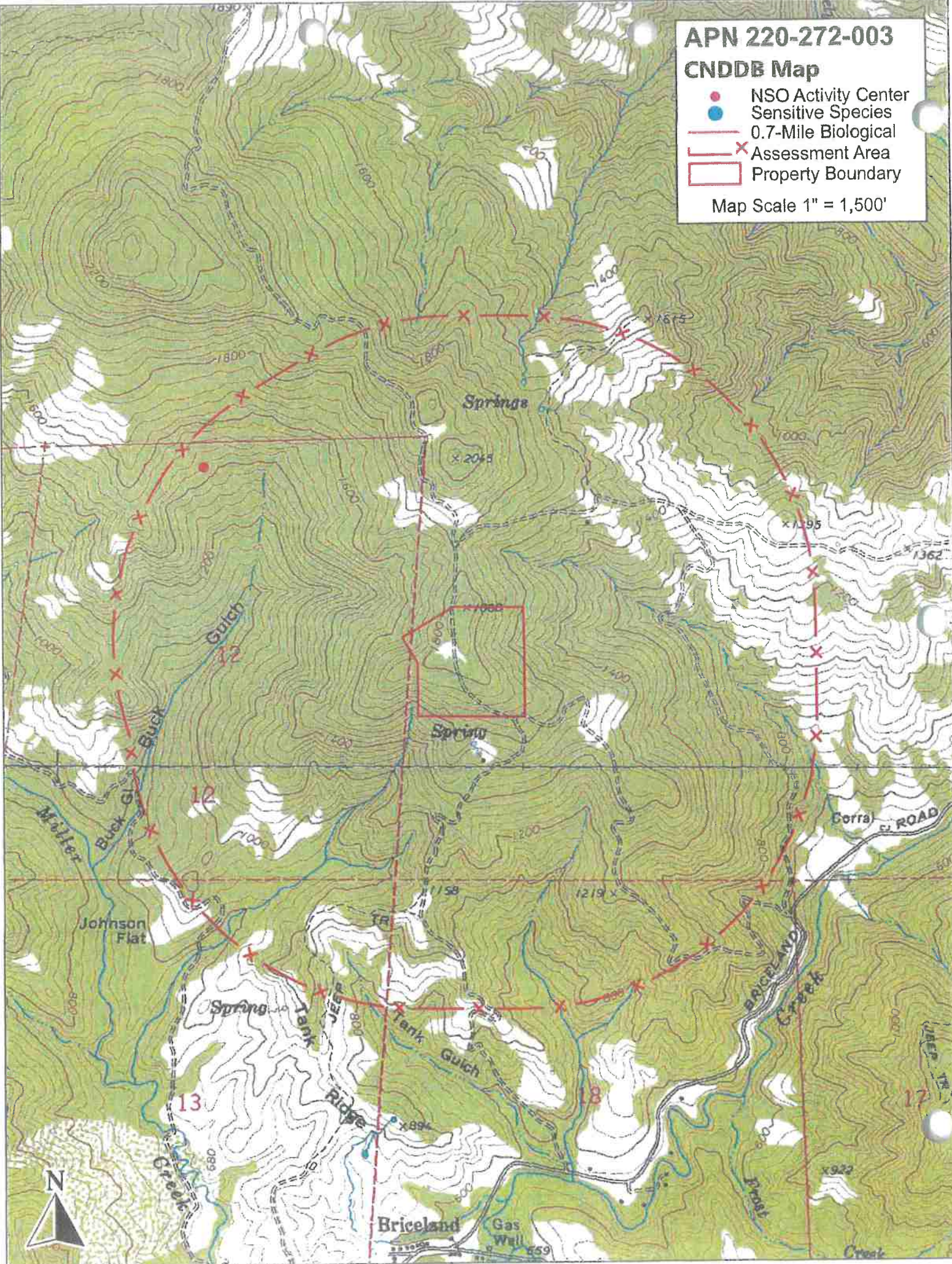


APN 220-272-003

CNDDDB Map

- NSO Activity Center
- Sensitive Species
- 0.7-Mile Biological
- X Assessment Area
- Property Boundary

Map Scale 1" = 1,500'



APN 220-272-003

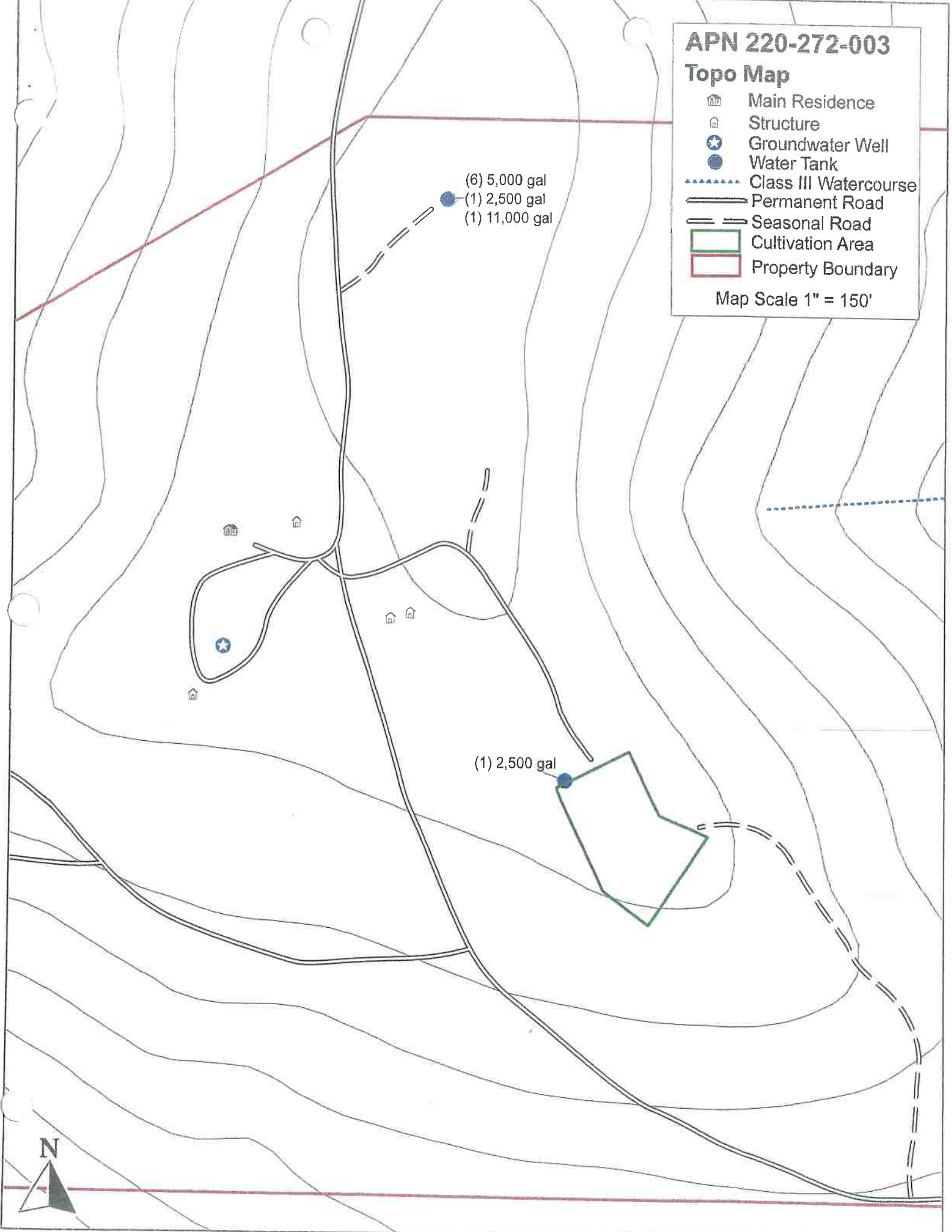
Topo Map

-  Main Residence
-  Structure
-  Groundwater Well
-  Water Tank
-  Class III Watercourse
-  Permanent Road
-  Seasonal Road
-  Cultivation Area
-  Property Boundary

Map Scale 1" = 150'



(6) 5,000 gal
(1) 2,500 gal
(1) 11,000 gal

(1) 2,500 gal



APN 220-272-003

DOQ Map

-  Main Residence
-  Structure
-  Groundwater Well
-  Water Tank
-  Class III Watercourse
-  Permanent Road
-  Seasonal Road
-  Cultivation Area
-  Property Boundary

Map Scale 1" = 150'

(3) 5,000 gal
(1) 2,500 gal
(1) 11,000 gal

(1) 2,500 gal



APN 220-272-003

USGS Map

-  Main Residence
-  Structure
-  Groundwater Well
-  Water Tank
-  Class III Watercourse
-  Permanent Road
-  Seasonal Road
-  Cultivation Area
-  Property Boundary

Map Scale 1" = 150'

(6) 5,000 gal
(1) 2,500 gal
(1) 11,000 gal

(1) 2,500 gal



Addendum 8M – Coordinates (NAD 83 DECIMAL DEGREES)

Groundwater Well: 40.128594°; -123.900353°

Addendum 10 – Project Description

This 1600 Notification is for a Cannabis Cultivation Project located in the Briceland area, within APN 220-272-003. The Applicant has a Zoning Clearance Certificate for Interim Permit for 4,200 ft² of existing outdoor cultivation and 5,400 ft² of existing mixed-light cultivation. All water on the property is sourced from an unpermitted groundwater well. The landowner plans to retroactively permit the well or drill an additional, permitted well nearby.

The project does not involve any of the following activities:

1. substantially divert or obstruct the natural flow of any river, stream or lake;
2. substantially change or use any material from the bed, channel, or bank of, any river, stream, or lake; or
3. deposit or dispose of debris, waste, or other material containing crumbled, flaked, or ground pavement where it may pass into any river, stream, or lake.

However, this Notification is being submitted pursuant to Business and Professions Code 26060.1(b)(3), which requires that every license for cultivation issued by the CDFA must comply with Section 1602 of the Fish and Game Code or receive written verification from the CDFW that a Lake or Streambed Alteration (LSA) Agreement is not required. Compliance with Section 1602 of the Fish and Game Code requires all prospective licensees to submit an LSA notification to the CDFW regional office serving the area where the activity will occur. Upon receipt of a complete LSA notification, CDFW will determine if an LSA Agreement is required.

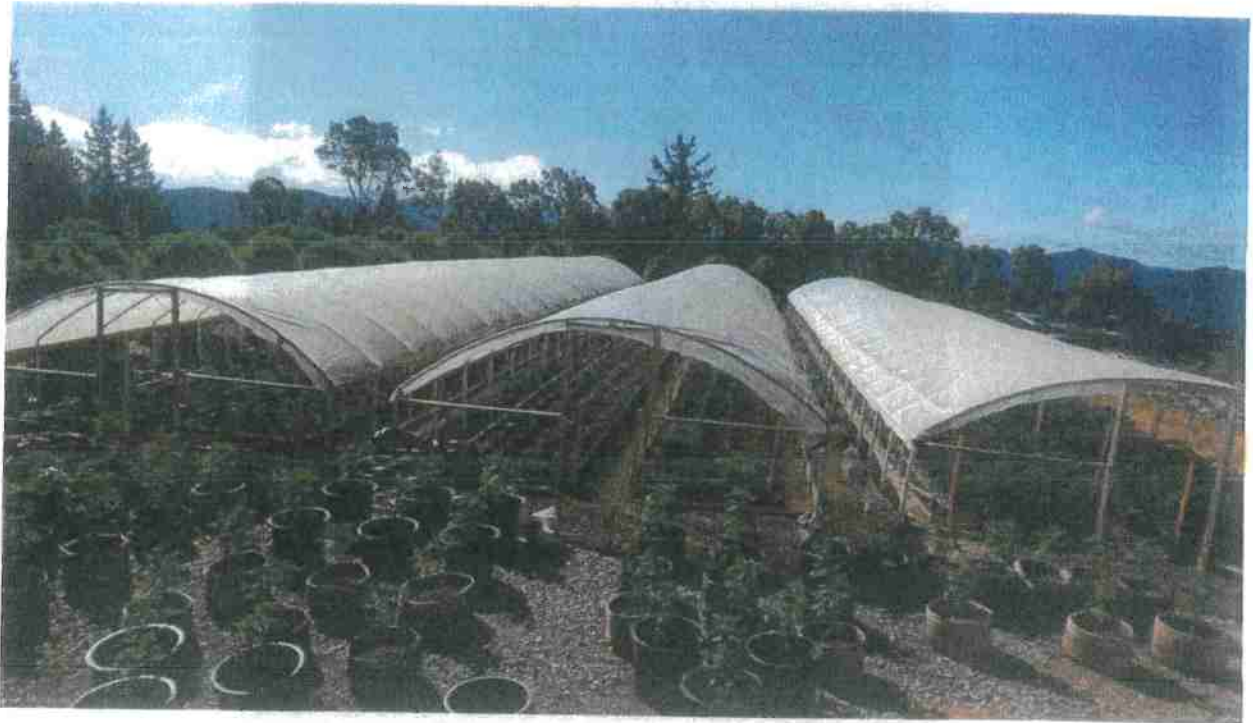
Groundwater Well: Unpermitted groundwater well that is the sole source of water on the property. The well was drilled by Bushnell Well Drilling; however, a Well Completion Report was never prepared. The well is located approximately 1,820-feet above mean sea level and is 600+ feet from any watercourse. The well's underlying geology is Ep – tertiary sedimentary rocks. Tertiary sedimentary rock consists of Paleocene marine sandstone, shale, and conglomerate; mostly well consolidated.

Remediation Plan

The property owner was enrolled into *California Regional Water Quality Control Board North Coast Region Order No. 2015-0023, Waiver of Waste Discharge Requirements and General Water Quality Certification for Discharges of Waste Resulting from Cannabis Cultivation and Associated Activities or Operations with Similar Environmental Effects in the North Coast Region* (WDID#: 1B170267CHUM). A Water Resource Protection Plan was prepared on 5/29/2018 and is attached.

The Applicant has transitioned into *State Water Resources Control Board Order WQ2017-0023-DWQ General Waste Discharge Requirements and Waiver of Waste Discharge Requirements for Discharges of Waste Associated with Cannabis Cultivation Activities*. The project has been enrolled as a "Tier 1-Low Risk" based upon disturbed area (less than 1-acre) and slopes (<30%). A Site Management Plan has not been prepared to date.

1600 Addendum - Photos



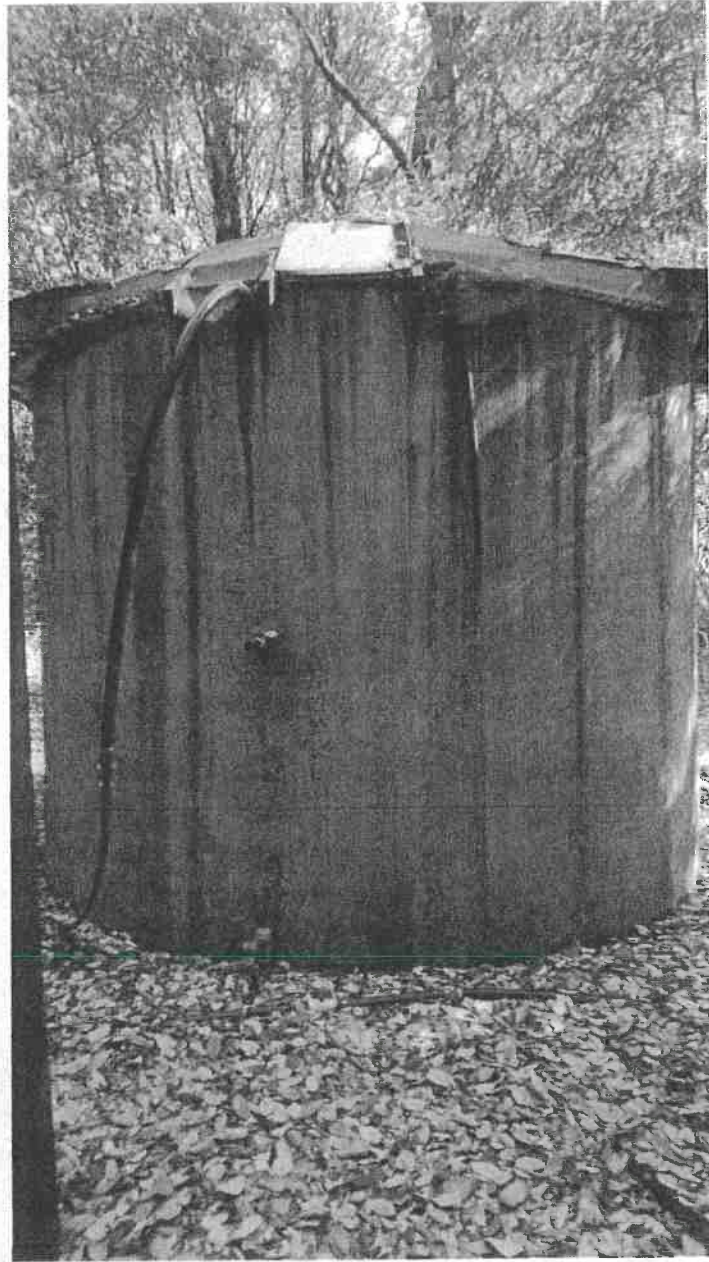
Picture 1: Cultivation Area. Photo date: 8/22/2019.



Picture 2: Groundwater well which supplies all water on the property. Photo date: 8/22/2019.



Picture 3 & 4: Six 5,000-gallon and one 2,500-gallon water storage tanks. Photo date: 8/22/2019.



Picture 5: 11,000-gallon water storage tank. Photo date: 8/22/2019.



Picture 6: Main Residence and place of domestic water use. Photo date: 8/22/2019.

Attachments



Applicant Name: Steven Jones

Project Name: APN 220-272-003

ATTACHMENT C

Water Diversion/Extraction/Impoundment

Complete this attachment **if** the project is directly related to any diversion, obstruction, extraction, or impoundment of the natural flow of a river, stream, or lake. Provide the number assigned to the State Water Resources Control Board (SWRCB) application, permit, license, registration, statement of diversion, and use, or other authorization to divert, extract, or impound water, if applicable. If you have a current or expired Lake or Streambed Alteration Agreement (Agreement) for some activity related to your project, provide the Agreement number in your project description below and attach this form, with the information requested on one or more separate pages, to the notification form (DFW 2023).

I. Diversion or Obstruction

- A. Attach plans of any diversion or water storage structure or facility that will be constructed or if no structures or facilities will be constructed, photographs of the project site, including any existing facilities or structures.
- B. Please complete the water use table below. For diversion rate, use gallons per day (gpd) if rate is less than 0.025 cubic foot per second (cfs) (approximately 16,000 gpd).

SEASON OF DIVERSION		PURPOSE OF USE	DIVERSION RATE (cfs or gpm)	AMOUNT USED (acre feet)	
BEGINNING DATE (Mo. & Day)	ENDING DATE (Mo. & Day)			FROM STORAGE	BY DIVERSION
Well Jan 1	Dec 31	Domestic/Agriculture	5 gpm		0.8

- C. Attach a topographic map that is labeled to show the following:
 1. Source of the water
 2. Points of diversion
 3. Areas of use
 4. Storage areas
- D. Specify the maximum instantaneous rate of withdrawal (using proposed equipment) in cubic feet per second (cfs) or gallons per minute (gpm).

5



E. Check each box below that applies to the project water rights and attach supporting documents.

- Riparian. *Attach the most recent Statement of Water Diversion and Use filed with the SWRCB.*
 - Diversion for immediate use.
 - Diversion to storage (for less than 30 days).
- Appropriative.
 - Pre-1914. *Attach the most recent Statement of Water Diversion and Use filed with SWRCB.*
 - Post-1914. *Attach a copy of the applicant's water right application, permit, or license filed with or issued by SWRCB.*
 - Small domestic, livestock stockpond, or small irrigation use registration. *Attach a copy of the applicant's registration of water use form filed with, or registration certificate issued by, SWRCB (See Water Code section 1228 et seq.).*
 - Diversion for immediate use.
 - Diversion to storage.
- Purchased or contracted water. *Attach a copy of the applicant's contract or letter from the applicant's water provider.*
- Other. *Describe below or attach separate page.*

Unpermitted Groundwater Well.

F. Approximate lowest level of flow in the river, stream, or lake at the point of diversion during the proposed season of diversion in gpm or cfs:

G. *Other information.* After the Department reviews the project description, and based on the project's location and potential impacts to fish and wildlife resources, the Department will determine if additional information is needed before accepting the notification as complete. Such information could include more site-specific information to ensure that the terms and conditions in the Agreement issued to the applicant will be adequate to protect the fish and wildlife resources the diversion or obstruction could adversely affect. Site-specific information could include biological or hydrological studies or surveys based on the season of diversion, the location of the diversion relative to other diversions in the watershed, the method of diversion, and the quantity of water to be diverted, such as the following:



1. *Water Availability Analysis* to determine if the water can be diverted without causing substantial adverse effects on downstream fish and wildlife resources. Water availability analyses are based on a comparison of flows without any diversions (unimpaired flows) and flows available when all known diversions are “subtracted” (impaired flows).
2. *Instream Flow Study* to determine the minimum bypass flows needed and maximum rates of withdrawal possible to provide adequate depths and velocities to protect habitat for all life stages of aquatic resources. The study plan must be prepared by a qualified fisheries biologist and approved by the Department, will determine the effects of the proposed diversion on flow depth and velocity.
3. *Water Quality Study* to assess the effects of the proposed water diversion or impoundment on water temperature and water quality at and downstream from the point(s) of diversion.

II. Permanent or Temporary Reservoir

Please provide the information below *if* the project includes the construction of a reservoir, whether permanent or temporary, and/or the filling of an existing reservoir by diverting or obstructing the flow of a river, stream, or lake.

A. Proposed use of the stored water:

B. Construction plans for the reservoir and dam. (*Attach plans*)

C. A complete description of the reservoir and dam, including the methods and materials that will be used to construct the reservoir and dam and the following dimensions certified by a licensed professional: the width, length, depth, and total surface area of the reservoir pool; the volume of water in acre-feet that will be stored in the reservoir; and the height and length of the dam.

D. The amount of riparian land that will be inundated (i.e., upstream from the dam): _____

E. Where vehicles will enter and exit the project site during construction and for maintenance purposes after construction. (*Attach map*)

F. The maximum distance of the disturbance that will occur upstream and downstream during construction:

G. The methods employed to ensure that the flow is maintained below the dam at all times when water is being diverted into the reservoir:



H. Specify the time period when the area below the dam becomes dry, if at all.

I. The methods employed to ensure that adult and juvenile fish will be able to pass over or around the dam:

J. If a fish ladder is necessary to enable adult and juvenile fish to pass over or around the dam, provide construction plans and an operation plan for the fish ladder. *(Enclose, if applicable)*

K. The methods employed to monitor and maintain water quality (including temperature) within the reservoir:

III. Temporary Reservoir

Please provide the information below **if** the project includes the construction of a temporary reservoir only within the stream zone.

A. Date of dam installation: _____

B. Date of dam removal: _____

C. Amount of time it will take to construct the dam: _____

D. Amount of time it will take to remove the dam: _____

E. Methods to ensure that the reservoir pool will be drained in a manner that does not strand or otherwise harm fish:



Applicant Name: Steven Jones

Project Name: APN 220-272-003

ATTACHMENT E

Cannabis Cultivation

Complete this attachment *if* the project includes cannabis cultivation and you are seeking a standard Lake or Streambed Alteration Agreement or if activities include remediation of a marijuana (cannabis) cultivation site.

“Cultivation” means any activity involving the planting, growing, harvesting, drying, curing, grading, or trimming of cannabis (Business and Professions Code, section 26000 et seq.). *Please note that if you are seeking authorization under the General Agreement for Cannabis Cultivation you must notify online at the California Department of Fish and Wildlife (CDFW) website: <https://www.wildlife.ca.gov/Conservation/LSA>.*

Complete Sections I through V and VII for all Agreement types.

Complete Section VI *if* any aspect of the project includes remediation. “Remediation” means to perform work that reduces or eliminates the direct and indirect adverse impacts on fish and wildlife resources associated with past or existing cannabis activities subject to Fish and Game Code 1602.

Submit Attachment E with the Notification form (DFW 2023) and applicable fees.

I. LOCAL ORDINANCE OR PERMIT – Complete this section for all Agreement types.

Does the town, city, or county where cultivation will occur have a rule, ordinance, or other regulation or law that governs the cultivation of cannabis?		
<input type="checkbox"/> Yes: Town/City	<input checked="" type="checkbox"/> Yes: County	<input type="checkbox"/> No
Are you required to have written authorization (permit) from the city/town and/or county to cultivate cannabis within the city/town and/or county?		
<input checked="" type="checkbox"/> Yes. <i>Enclose written authorization and/or completed application(s).</i>		<input type="checkbox"/> No

II. PROPERTY DIAGRAM – Complete this section for all Agreement types.

Enclose the cultivation Property Diagram that has been, or will be, submitted to the California Department of Food and Agriculture (CDFA) (California Code of Regulations, title 3, section 8105). For Property Diagram requirements, refer to http://calcannabis.cdfa.ca.gov/ , or CDFA's Reference Guide for the Cultivation Plan .	
Cultivation Property Diagram enclosed?	
<input checked="" type="checkbox"/> Yes <i>Enclose the property diagram required by CDFA (Cal. Code Regs., tit. 3, § 8105).</i>	<input type="checkbox"/> No <i>If “no” is checked, enclose a brief description explaining why the property diagram is not enclosed.</i>



III. CULTIVATION OPERATION – Complete this section for all Agreement types.

Provide information regarding any license CDFA has issued to the Entity, or that the Entity has applied or will apply for.

Type of Operation:

- Proposed new cannabis cultivation operation
- Existing cannabis cultivation operation

Type of CDFA License you have or will apply for :

Specialty Cottage:

- Specialty Cottage Outdoor
- Specialty Cottage Indoor
- Specialty Cottage Mixed-Light Tier 1
- Specialty Cottage Mixed-Light Tier 2

Specialty:

- Specialty Outdoor
- Specialty Indoor
- Specialty Mixed-Light Tier 1
- Specialty Mixed-Light Tier 2

Small:

- Small Outdoor
- Small Indoor
- Small Mixed-Light Tier 1
- Small Mixed-Light Tier 2

Medium:

- Medium Outdoor
- Medium Indoor
- Medium Mixed-Light Tier 1
- Medium Mixed-Light Tier 2

- Nursery
- Processor

CDFA Annual or Provisional License # (if applicable): LCA19-0005284, LCA19-0005283

CDFA Temporary License # (if applicable): _____



IV. WATER SUPPLY – Complete this section for all Agreement types. Add additional pages as necessary.

How will or how is water supplied to the cannabis cultivation site(s)?

- For geographic coordinates, provide the latitude and longitude coordinates for the water supply (if applicable). CDFW utilizes decimal degrees and WGS 84 datum. Access [Google Maps Help](#) if you need assistance in finding your coordinates.

Diversion, Obstruction, Extraction, or Impoundment of a River, Stream, or Lake

Yes No

If yes is checked, you **must** also complete Attachment C.

Provide geographic coordinates for **each** diversion, obstruction, extraction, or impoundment:

Latitude: 34.14333	Longitude: -117.17144
--------------------	-----------------------

Spring(s)

Yes No

If yes is checked, you **must** also complete Attachment C.

Number of Springs _____

Provide geographic coordinates for **each** spring:

Latitude: 34.14333	Longitude: -117.17144
--------------------	-----------------------

Private Well(s)

Yes No

Provide geographic coordinates for **each** well:

Latitude: 40.128594	Longitude: -123.900353
---------------------	------------------------

If a private well is being utilized, provide a copy of the well log/well completion report filed with the Department of Water Resources (DWR) pursuant to Section 13751 of Water Code. If no well log is available, provide evidence from DWR indicating that DWR does not have a record of the well log. See DWR's Groundwater Management page for more information at: <https://water.ca.gov/Programs/Groundwater-Management/Wells>

Public Water System

Yes No

Name of public water system: _____

If Yes, provide the most recent copy of water service bill or will-serve letter from the water service provider.

Water Hauling

Yes No

Name of water hauler: _____

Other Source

Specify: _____



V. CALIFORNIA LICENSED PROFESSIONAL OR QUALIFIED ENVIRONMENTAL CONSULTANT/BIOLOGIST –
 Complete this section for all Agreement types.

Have you consulted with or retained a California licensed professional or qualified environmental consultant/biologist to address your cannabis cultivation?		
<input checked="" type="checkbox"/> Yes (<i>Provide the information below</i>) <input type="checkbox"/> No		
Name of Company	Name of Professional or Consultant/Biologist	Business Telephone
Timberland Resource Consultants	Chris Carroll	707-725-1897

VI. REMEDIATION – Complete this section if *any* aspect of the project includes remediation.

<p>Remediation reduces or eliminates direct and indirect adverse effects on fish and wildlife resources associated with a past or existing project or activity that supports or relates to cannabis cultivation, whether on or off a cultivation site. Remediation projects typically include modification, repair, removal, restoration, construction, or reconstruction activities. Examples of remediation projects include, but are not limited to:</p> <ul style="list-style-type: none"> • Repairing a stream crossing used to access a cultivation site; • Removing a staging area on a stream bank; and • Repairing a water diversion structure used to irrigate a cultivation site. 	
A. Order or Notice. Are you required to perform remediation work described in this notification pursuant to a court or administrative agency notice or order?	
<input type="checkbox"/> Yes (<i>Enclose a copy of the order or notice</i>) <input checked="" type="checkbox"/> No	
Did you receive a notice of violation (NOV) from CDFW that relates to the remediation work described in this notification?	
<input type="checkbox"/> Yes (<i>Enclose a copy of the NOV</i>) <input checked="" type="checkbox"/> No	
B. Remediation Area. What is the amount of area requiring remediation?	
Remediation area in total:	<u>0</u> square feet
C. Remediation Plan. Has a plan to remediate the area been prepared?	
<input checked="" type="checkbox"/> Yes (<i>Enclose the plan</i>) <input type="checkbox"/> No	
<p>Note: If "yes" is checked, submit the remediation plan with the Notification. If "no" is checked, your Notification may be incomplete and CDFW may request you have a California licensed professional or qualified environmental consultant/biologist amend the plan or submit a new plan for your Notification.</p>	



VII. REMEDIATION FEES -- Entity must pay the fee(s) at time of Notification.

The current fee schedule is available at <https://www.wildlife.ca.gov/Conservation/LSA> and specified in Section 699.5, subdivision (b) of the California Code of Regulations, title 14.

Remediation fees, if applicable, are specified in Section 699.5, subdivision (i) of the California Code of Regulations, title 14. The remediation fee is in addition to the notification fee and must be submitted by *separate* check or other method of payment.

You may pay by credit card at CDFW's Online License Sales and Services page at: <https://www.wildlife.ca.gov/Licensing>. Attach copy of sales receipt to the notification. A handling charge will be applied (Fish and G. Code, § 1055.1, subd. (d)) to the credit card transaction.

Remediation Fee Included (if applicable)?

\$ 3,187.75 if the total remediation area identified in Section VI (B) above is less than or equal to 1,000 square feet

\$5,313.00 if the total remediation area identified in Section VI (B) above is greater than 1,000 square feet



**HUMBOLDT COUNTY
PLANNING AND BUILDING DEPARTMENT
3015 H STREET, EUREKA, CA 95501 ~ PHONE (707) 445-7245**

ZONING CLEARANCE CERTIFICATE FOR INTERIM PERMIT

Project: Pursuant to the Humboldt County Commercial Medical Marijuana Land Use Ordinance (CMMLUO), Section 314-55.4.1 et seq., specifically Section 314-55.4.8.11, a Zoning Clearance Certificate for an Interim Permit may be issued for an Existing Cannabis Cultivation and ancillary activities. An application has been submitted for the location and cultivation area shown below.

Project Location:

4,200 square feet of existing outdoor cultivation. 5,400square feet of existing mixed light cultivation.

Present General Plan Designation: RA40 Present Zoning: FR-B-5(40)

Application Number: 11051

Key Parcel Number: 220-272-003-000

APPLICANT
Steven Jones PO Box 2204 Redway CA 95560
OWNER
Jones Steven M Po Box 2204 Redway CA 95560
AGENT

Pursuant to Humboldt County Code Section 314-55.4.8.11 a Zoning Clearance Certificate shall be approved for an Interim Permit when it is demonstrated that:

1. A permit application for existing commercial cannabis cultivation and ancillary activities was submitted and determined to be complete.
2. Adequate evidence has been submitted demonstrating that a cultivation site existed on the parcel prior to January 1, 2016 and the Department independently reviewed the evidence of prior cultivation and determined the size of pre-existing cultivation area based upon aerial and satellite imagery, or other substantial evidence.
3. Approval of the Interim Permit is conditional and shall occur through issuance of the Zoning Clearance Certificate subject to a Compliance Agreement. The Compliance Agreement specifies restrictions, penalties, and commitments to complete the permit process and confines continued operations to the existing areas only.
4. Violation of the Compliance Agreement shall be grounds for permit cancellation and disqualification of the property from future permitting.
5. The interim permit authorizes the permittee to seek state licensure and continue operations until completion of the local permit review process and issuance or denial of a County permit, or December 31, 2018, whichever occurs first. The Director may extend this deadline for cause. Refusal of the Director to issue or extend an interim permit shall not entitle the applicant to a hearing or appeal of the decision. Additionally, approval of any interim permit does not obligate the County to approve a non-interim permit or extension of the interim permit. Permit cancellation and disqualification of the property from future permitting shall be decided by the Zoning Administrator or the Planning Commission at a noticed public hearing. Those decisions may be appealed to the Board of Supervisors pursuant to the appeal procedures outlined under Section 312-13 of these regulations.

Determination

It is the Determination of the Planning Director that all provisions of the ordinance allowing issuance of an Interim Permit have been satisfied and a Zoning Clearance Certificate is approved subject to the requirements contained in the attached Compliance Agreement (Exhibit A.)

Issued By:



John H. Ford
Director, Planning and Building Department

COMPLIANCE WITH APPLICABLE STATE AND LOCAL SUBDIVISION LAWS, REGULATIONS, AND REQUIREMENTS HAS NOT BEEN REVIEWED AS PART OF THIS CERTIFICATE. ISSUANCE OF THIS ZONING CLEARANCE CERTIFICATE FOR AN INTERIM PERMIT DOES NOT CONSTITUTE CONFIRMATION OF LEGAL PARCEL STATUS.

THIS INTERIM PERMIT IS ONLY VALID IF IT IS ACCOMPANIED BY A SIGNED AND NOTARIZED EXHIBIT A COMPLIANCE AGREEMENT THAT IS CONFIRMED TO BE ON FILE AT THE COUNTY OF HUMBOLDT PLANNING AND BUILDING DEPARTMENT.

WHEREAS, the County is utilizing this Compliance Agreement ("Agreement") to allow the Applicant and Owner to complete the remainder of the permit process in a timely manner and continue operation of the ECCC while applying for a license from the State of California to cultivate cannabis; and

WHEREAS, pursuant to the authority provided in HCC Section 314-55.4.8.11, County will issue the Zoning Clearance Certificate for an Interim Permit on the real property for the ECCC and, in exchange, Applicant and Owner will in good faith complete the Application on or before December 31, 2018; and

WHEREAS, the Zoning Clearance Certificate for an Interim Permit authorizes the Applicant to seek State licensure and continue operations of the ECCC until the completion of the process for the Zoning Clearance Certificate, Special Permit, or Use Permit, or denial of the certificate or permit, or December 31, 2018, whichever occurs first; and

NOW, THEREFORE, in consideration of the faithful performance of the terms, conditions, and promises set forth in this Agreement, the Parties agree as follows:

1. Subdivision Map Act and Humboldt County Subdivision Regulations. The Applicant and Owner acknowledge this Zoning Clearance Certificate for an Interim Permit is issued without a legal determination having been made as to the number, size, shape of, or legal status of the parcel(s) that may be encompassed within the real property represented by the parcel number(s) listed in the Zoning Clearance Certificate for Interim Permit. Furthermore, the Applicant and Owner hereby acknowledge issuance of this Zoning Clearance Certificate for an Interim Permit is not an approval for development and does not entitle the Applicant, Owner, or their Successors in Interest to a conditional or unconditional certificate of subdivision compliance pursuant to Government Code Sections 66499.34 or 66499.35(c), or any other law or regulation.
2. Development Suitability. The Property Owner and Applicant hereby acknowledge the issuance of this Zoning Clearance Certificate for an Interim Permit is for existing cannabis cultivation purposes only, and does not authorize or grant any approval for development or improvement of the property. The real property subject to this Zoning Clearance Certificate for an Interim Permit has not been evaluated for suitability for development in accordance with existing or future regulations.
3. Taxation. The Property Owner and Applicant hereby acknowledge upon the date of issuance of this Zoning Clearance Certificate for an Interim Permit allowing outdoor and/or mixed light of ECCC shall be subject to taxation pursuant Humboldt County Code Sections 719.1 – 719.15.
4. Track and Trace. The Applicant and Owner shall participate in the Medical Cannabis Track and Trace Program administered by the Humboldt County Agricultural Commissioner.

Waiver. The failure of the County to proceed against the Applicant and/or Property Owners in an enforcement action, whether administrative, civil or criminal, for any violation of the applicable ordinance, this Agreement and/or state or local law or regulation shall not constitute or be deemed a waiver of the County's right to proceed against Owner and/or Applicant for any subsequent violation. Nothing in this Agreement shall limit in any manner the authority of the County to apply and/or enforce any provisions of the County's code or state law or regulation to the Owner and Applicant and activities occurring on the property.

10. Notices. All notices required by this Agreement shall be sent, at a minimum, via first class United States Mail with postage prepared to the Parties as follows:

To County:

Director, Planning and Building Department
3015 H Street
Eureka, CA 95501

To Property Owners:

As listed in County of Humboldt property tax records.

To Applicant:

As listed on Zoning Clearance Certificate for Interim Permit.

Notices shall be deemed served upon deposit in the United States mail. The Owner and Applicant shall notify the County in writing of any changes in address.

11. Indemnification. Owner and Applicant shall hold harmless, defend and indemnify County and its agents, officers, officials, employees and volunteers from and against any and all claims, demands, losses, damages, liabilities, expenses and costs of any kind or nature, including, without limitation, attorney fees or other costs of litigation, arising out of, or in connection with, the issuance of a Zoning Clearance Certificate for an Interim Permit for the subject property, the terms of the Zoning Clearance Certificate for an Interim Permit, or the terms of this Agreement.
12. Binding on Successors. This Agreement is binding on the heirs, successors and assigns of the Parties. In the event of a permit transfer, a new compliance agreement must be executed. In the event of property transfer, the Seller and Applicant have an affirmative duty to inform the Buyer of this Compliance Agreement. Seller and Applicant must also provide written proof of Buyer notification to the County.
13. Amendment. This Agreement may be amended, modified or changed by the Parties provided that said amendment, modification or change is in writing and approved by all Parties.



EDMUND G. BROWN JR.
GOVERNOR

MATTHEW RODRIGUEZ
SECRETARY FOR
ENVIRONMENTAL PROTECTION

North Coast Regional Water Quality Control Board

November 21, 2018

WDID:1_12CC404183

STEVEN JONES
PO BOX 2204
REDWAY, CA 95560

Subject: Notice of Applicability - Waste Discharge Requirements Water
Quality Order WQ-2017-0023-DWQ

The attached Notice of Applicability provides notice that the requirements of the State Water Board *Cannabis Cultivation Policy- Principles and Guidelines for Cannabis Cultivation* (Policy), and the *General Waste Discharge Requirements and Waiver of Waste Discharge Requirements for Discharges of Waste Associated with Cannabis Cultivation Activities*, Order No. WQ-2017-0023-DWQ (General Order) are applicable to the site as described below. Based on the information provided, the Discharger self-certifies the cannabis cultivation activities are consistent with the requirements of the State Water Board Policy and General Order.

Please direct all submittals, discharge notifications, and questions regarding compliance and enforcement to the North Coast Regional Water Quality Control Board Cannabis Program at (707) 576-2676 or northcoast.cannabis@waterboards.ca.gov.

Sincerely,

2018.11.21 11:44:24 PST

FOR:

Water Boards

Matthias St. John
Executive Officer
North Coast Regional Water Quality Control Board

181115_1L_1_12CC404183_1B170267CHUM_1925 Elk Ridge Rd_NOA_TW

NOTICE OF APPLICABILITY – WASTE DISCHARGE REQUIREMENTS, WATER QUALITY ORDER WQ-2017-0023-DWQ, STEVEN JONES, HUMBOLDT COUNTY APN(s) 220-272-003-000

Steven Jones (hereafter “Discharger”) submitted information through the State Water Resources Control Board’s (State Water Board’s) online portal on August 30, 2018, for discharges of waste associated with cannabis cultivation related activities. Based on the information provided, the Discharger self-certifies the cannabis cultivation activities are consistent with the requirements of the State Water Board *Cannabis Cultivation Policy-Principles and Guidelines for Cannabis Cultivation* (Policy), and the *General Waste Discharge Requirements and Waiver of Waste Discharge Requirements for Discharges of Waste Associated with Cannabis Cultivation Activities*, Order No. WQ-2017-0023-DWQ (General Order). This letter provides notice that the Policy and General Order are applicable to the site as described below. You are hereby assigned waste discharge identification (WDID) number 1 12CC404183. The original WDID assigned by the North Coast Regional Water Quality Control Board was 1B170267CHUM.

The Discharger is responsible for all the applicable requirements in the Policy, General Order, and this Notice of Applicability (NOA). This includes making any necessary changes to the enrollment, and the Discharger is the sole person with legal authority to make those changes. The Discharger will be held liable for any noncompliance with the Policy, General Order, and the NOA.

1. FACILITY AND DISCHARGE DESCRIPTION

All dischargers enrolled under the North Coast Regional Water Board’s Order (R1-2015-0023) or the Central Valley Regional Water Board’s Order (R5-2015-0113) as of October 17, 2017, (the adoption date of the General Order) may retain the reduced setbacks applicable under the appropriate Regional Water Board order unless the Executive Officer for the appropriate Regional Board determines that the reduced setbacks applicable under their regional order are not protective of water quality. However, sites that expand their cannabis cultivation area or other cannabis related activities must comply with the riparian setbacks in the General Order.

The information submitted by the Discharger states the disturbed area is equal to or greater than 2,000 square feet and less than 1 acre (43,560 square feet) no portion of the disturbed area is within the setback requirements, no portion of the disturbed area is located on a slope greater than 30 percent, and the cannabis cultivation area is less than or equal to 1 acre.

Based on the information submitted by the Discharger, the cannabis cultivation activities are classified as Tier 1 Low Risk.

2. SITE-SPECIFIC REQUIREMENTS

The Policy and General Order are available on the Internet at <http://www.waterboards.ca.gov/cannabis>. The Discharger shall ensure that all site operating personnel know, understand, and comply with the requirements contained in the Policy, General Order, this NOA, and the Monitoring and Reporting Program (MRP, Attachment B of the General Order). Note that the General Order contains standard provisions, general requirements, and prohibitions that apply to all cannabis cultivation activities.

The application requires the Discharger to self-certify that all applicable Best Practicable Treatment or Control (BPTC) measures are being implemented, or will be implemented by the onset of the winter period (November 15 - April 1), following the enrollment date. Landowners of the cultivation site in the North Coast Region are required to submit and implement Site Management Plans that describes how BPTC measures are implemented property-wide, including BPTC measures implemented to address discharges from legacy activities (e.g. former timber harvest, road building, mining, etc.) at the site per Provision C.1.a. of the General Order. Dischargers that cannot implement all applicable BPTC measures by the onset of the winter period, following their enrollment date, shall submit to the appropriate Regional Water Board a *Site Management Plan* that includes a time schedule and scope of work for use by the Regional Water Board in developing a compliance schedule as described in Attachment A of the General Order.

During reasonable hours, the Discharger shall allow the State Water Board or Regional Water Quality Control Board (collectively Water Boards), California Department of Fish and Wildlife, CAL FIRE, and any other authorized representatives of the Water Boards upon presentation of a badge, employee identification card, or similar credentials, to:

- i. enter premises and facilities where cannabis is cultivated; where water is diverted, stored, or used; where wastes are treated, stored, or disposed; or in which any records are kept;
- i. access and copy, any records required to be kept under the terms and conditions of the Policy and General Order;
- ii. inspect, photograph, and record audio and video, any cannabis cultivation sites, and associated premises, facilities, monitoring equipment or device, practices, or operations regulated or required by the Policy and General Order; and
- iii. sample, monitor, photograph, and record audio and video of site conditions, any discharge, waste material substances, or water quality parameters at any location for the purpose of assuring compliance with the Policy and General Order.

3. TECHNICAL REPORT REQUIREMENTS

The following technical report(s) shall be submitted by the Discharger as described below:

A Site Management Plan, by November 27, 2018, consistent with the requirements of General Order Provision C.1.a., and Attachment A, Section 5. Attachment D of the General Order provides guidance on the contents of the Site Management Plan.

A *Site Closure Report* must be submitted 90 days prior to permanently ending cannabis cultivation activities and seeking to rescind coverage under the General Order. The *Site Closure Report* must be consistent with the requirements of General Order Provision C.1.e., and Attachment A, Section 5. Attachment D of the General Order provides guidance on the contents of the *Site Closure Report*.

4. MONITORING AND REPORTING PROGRAM

The Discharger shall comply with the Monitoring and Reporting Program (MRP). Attachment B of the General Order provides guidance on the contents for the annual reporting requirement. Annual reports shall be submitted to the Regional Water Board by March 1 following the year being monitored. The Discharger shall not implement any changes to this MRP unless and until a revised MRP is issued by the Regional Water Board Executive Officer or the State Water Board Division of Water Quality Deputy Director, or the State Water Board Chief Deputy Director.

5. ANNUAL FEE

According to the information submitted, the discharge is classified as Tier 1 Low Risk with the current annual fee assessed at \$600. The fee is due and payable on an annual basis until coverage under this General Order is formally rescinded. To rescind coverage, the Discharger must submit a Notice of Termination, including a Site Closure Report at least 90 days prior to termination of activities and include a final MRP report.

6. TERMINATION OF COVERAGE UNDER THE GENERAL ORDER & REGIONAL WATER BOARD CONTACT INFORMATION

Cannabis cultivators that propose to terminate coverage under the Conditional Waiver or General Order must submit a Notice of Termination (NOT). The NOT must include a *Site Closure Report* (see Technical Report Requirements above), and Dischargers enrolled under the General Order must also submit a final monitoring report. The Regional Water Board reserves the right to inspect the site before approving a NOT. Attachment C of the General Order includes the NOT form and Attachment D of the General Order provides guidance on the contents of the *Site Closure Report*.

If the Discharger cannot comply with the General Order, or will be unable to implement an applicable BPTC measure contained in Attachment A by the onset of the winter period each year, the Discharger shall notify the North Coast Regional Cannabis Unit staff at (707) 576-2676 or northcoast.cannabis@waterboards.ca.gov so that a site-specific compliance schedule can be developed.

Cc: Kevin Porzio, State Water Resources Control Board, dwq.cannabis@waterboards.ca.gov
Michael Vella, California Department of Food and Agriculture, michael.vella@cdfa.ca.gov
Cheri Sanville, California Department of Fish and Wildlife, cheri.sanville@wildlife.ca.gov
Cliff Johnson, Humboldt County Planning and Building, cjohnson@humboldt.ca.us

Notice of Applicability
WQ 2017-0023-DWQ-R1
WDID #1_12CC404183

- 5 -

November 21, 2018