

LOCATION MAP

**PROPOSED KNAPEK BRENT
ZONE RECLASIFICATION
HONEYDEW AREA
PLN-2022-17796**

APN: 107-091-007; 107-096-002

T03S R01W S03 HB&M (Shubrick Peak) 02006070000200607000

Coastal Zone Boundary 

Project Area = 

This map is intended for display purposes and should not be used for precise measurement or navigation. Data has not been completely checked for accuracy.

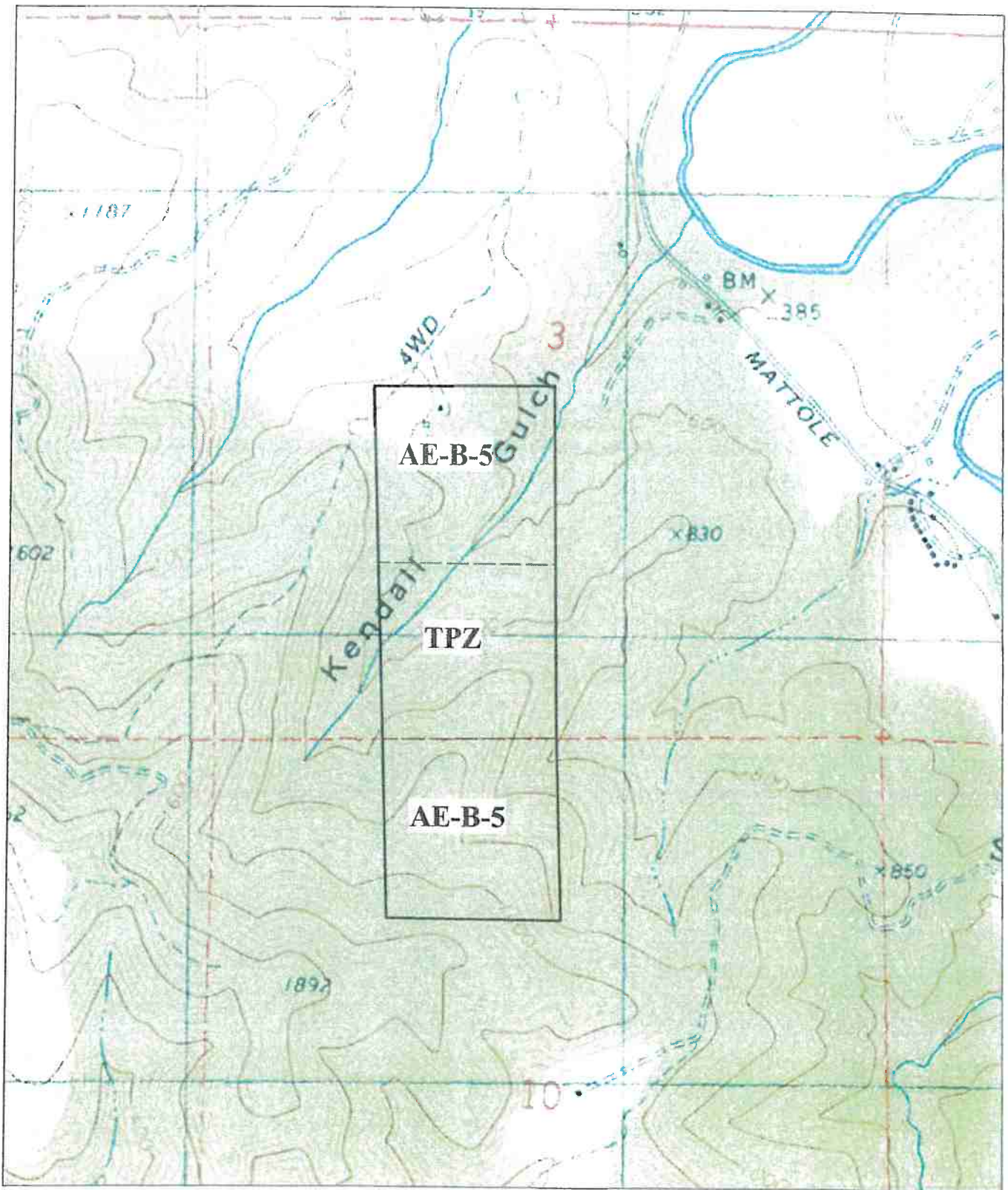


 Feet

Rezone Map



Knapek Honeydew Property
TPZ Rezone Current Zoning
Portions of Sections 3 & 10, T3S, R1W, H. B. & M.

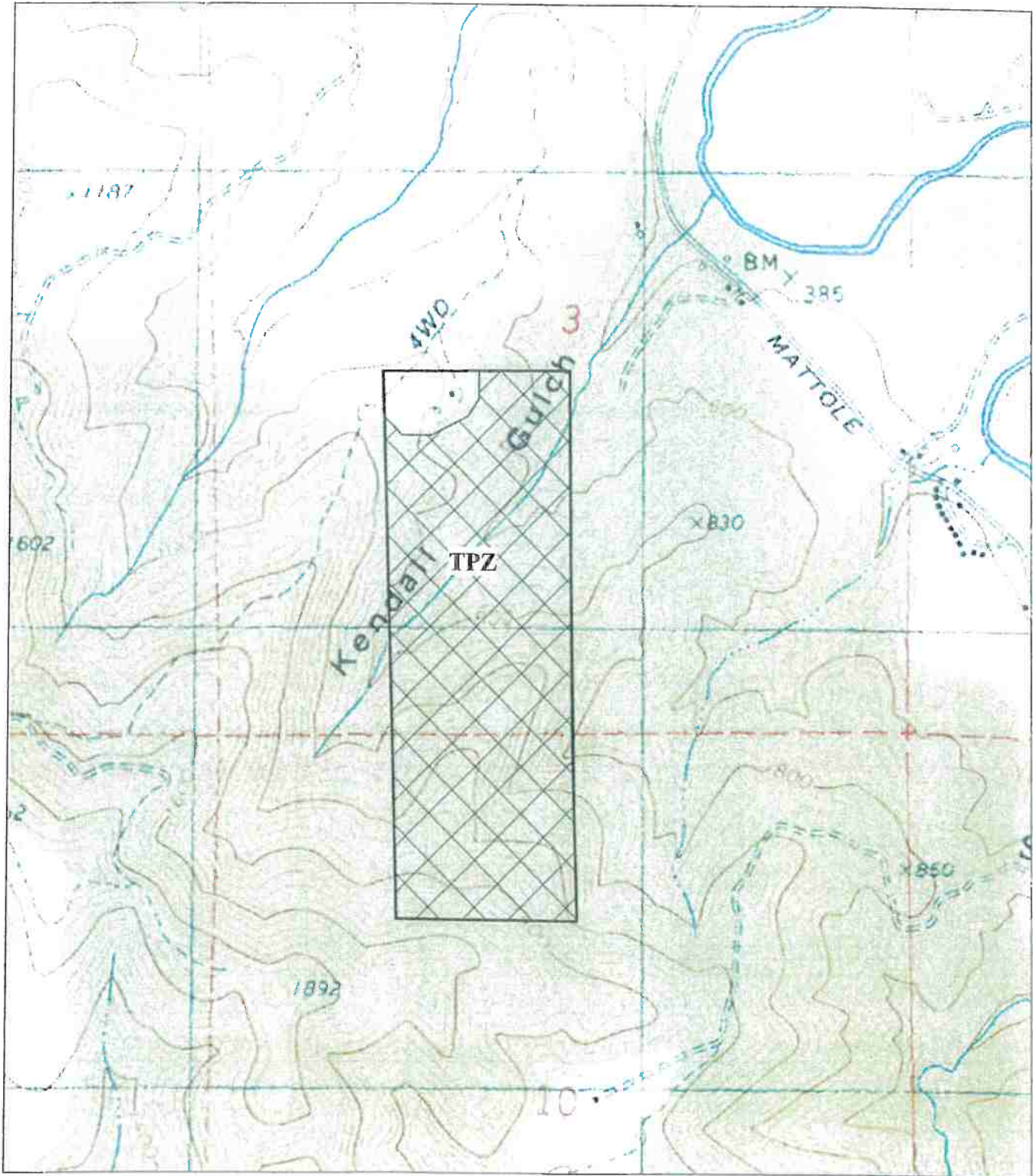


Legend:
Property Line —————
Current Zoning Boundary - - - - -



Scale 1"=1,000'

**Knappek Honeydew Property
TPZ Rezone Proposal
Portions of Sections 3 & 10, T3S, R1W, H. B. & M.**



LEGEND:

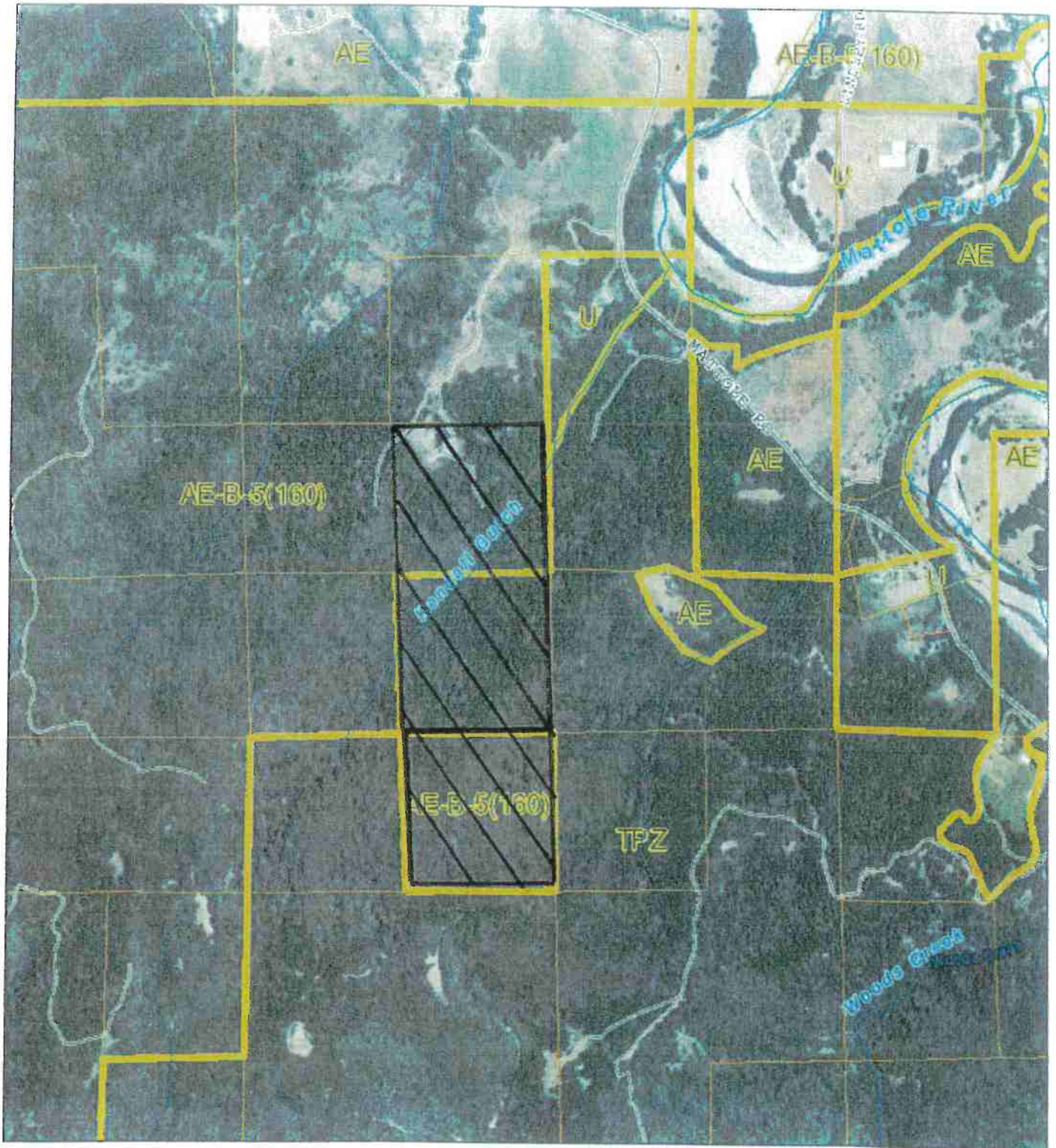
Property Boundary



Proposed Zoning

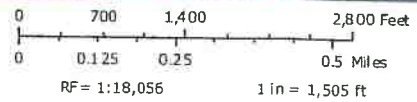


Scale 1"=1,000'



Knappek TPZ Rezone ArcGIS Web Map

Humboldt County Planning and Building Department



- | | | |
|---------------------------|---------------------------|------------------------|
| Highways and Roads | — Private or Unclassified | — Intermittent |
| — Principal Arterials | — Major River or Stream | — Subsurface |
| — Minor Arterials | Blue Line Streams | — Zoning |
| — Major Collectors | — Perennial 1-3 | — City Boundary |
| — Minor Collectors | — Perennial >4 | — City Boundary (750K) |
| — Local Roads | | — Counties |

Printed: September 21, 2021 Web AppBuilder 2.0 for ArcGIS
 Map Disclaimer:
 While every effort has been made to assure the accuracy of this information, it should be understood that it does not have the force & effect of law, rule, or regulation. Should any difference or error occur, the law will take precedence.
 Source: Source: Esri, Maxar, GeoEye, Earthstar Geographics, CNES/Airbus DS, USDA, USGS, AeroGRID, IGN, and the GIS User Community, Humboldt County GIS, Esri, HERE, Garmin, (c) OpenStreetMap contributors, and the GIS user community

