



Cannabis Relocation Plan
APN: 210-141-008
County Application # 11966
Humboldt County

Prepared By:
Natural Resources Management Corporation
1434 3rd Street
Eureka, CA 95501

September 14, 2020



Site Maps

Vicinity of APN 210-141-008-000; T1N,
R5E, SEC 35, HB&M; USGS DINSMORE
QUAD; HUC12: 180101050902

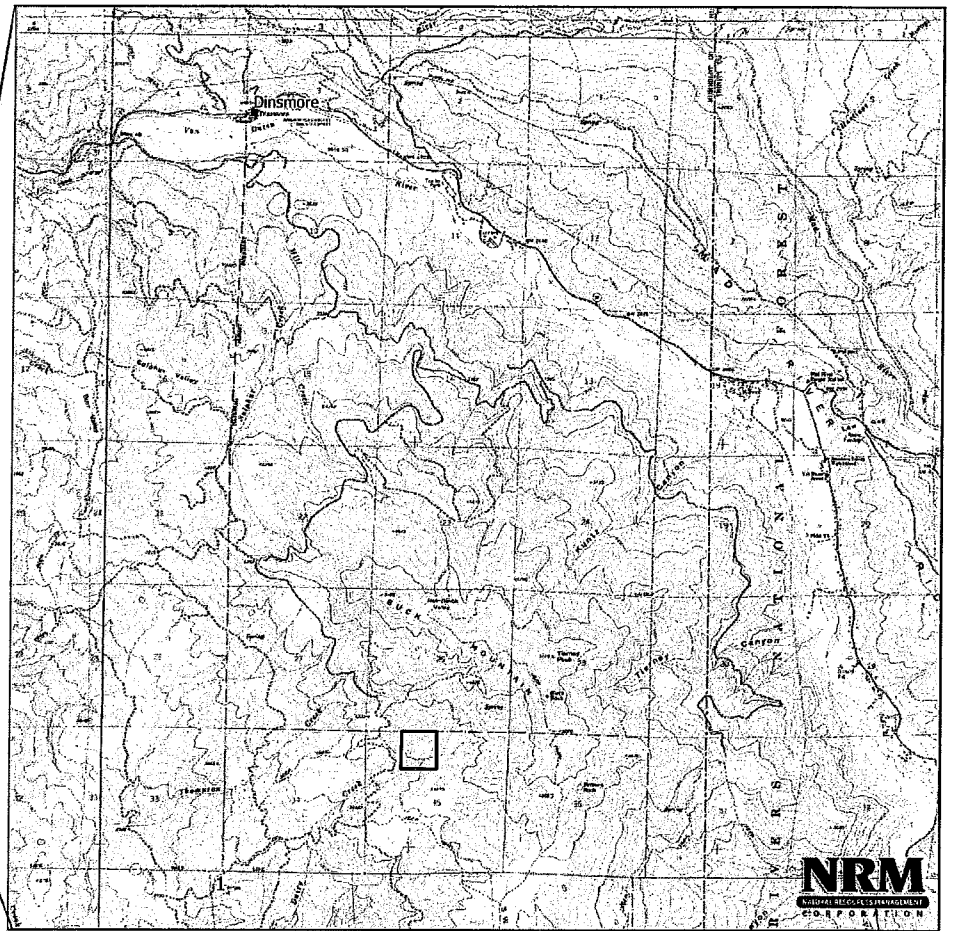
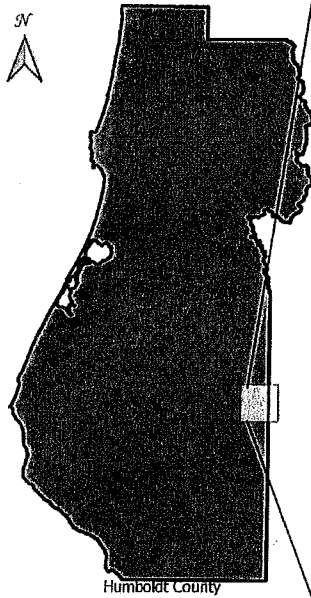


Figure 1. Vicinity of APN 210-141-008

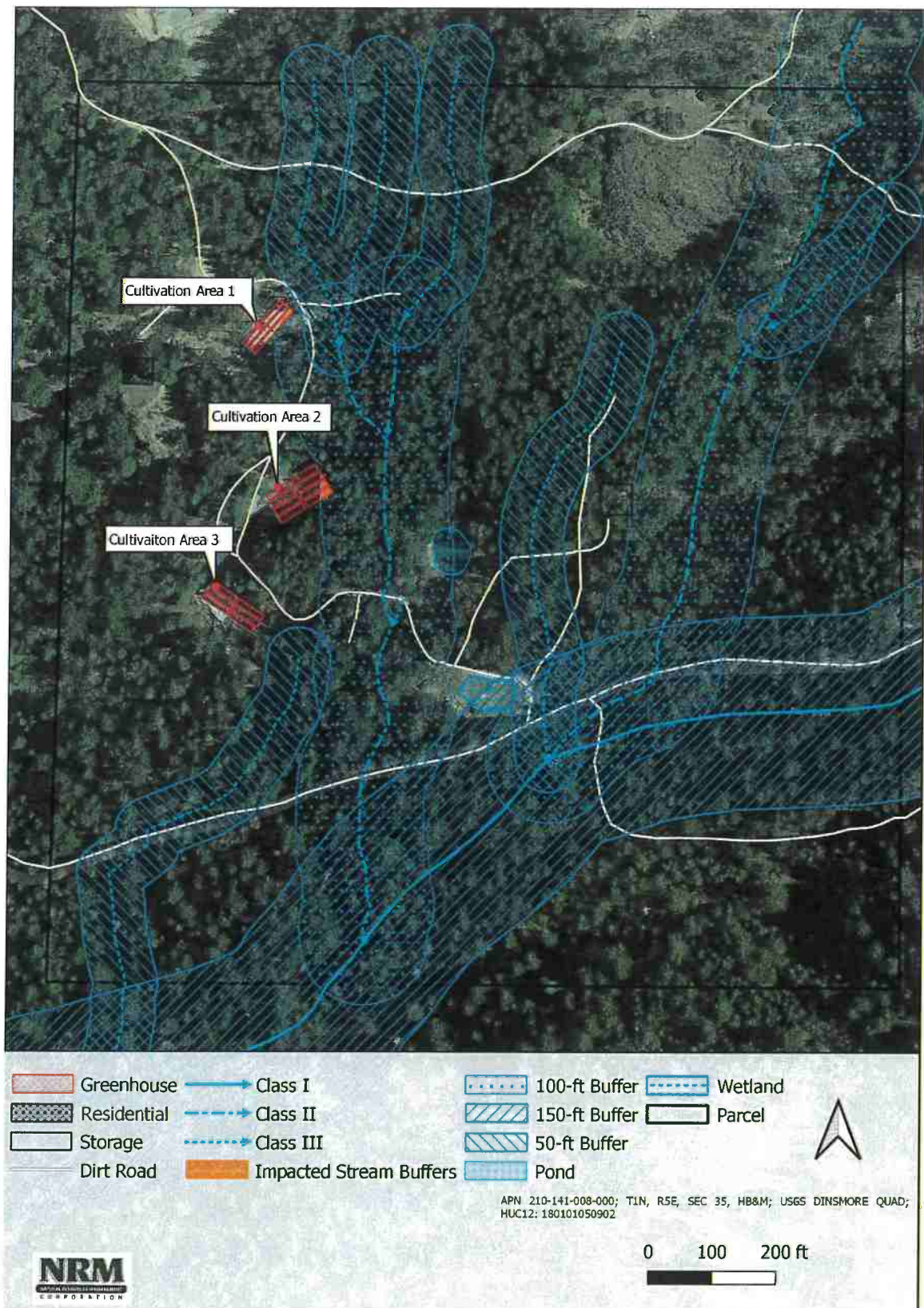


Figure 2. Stream Buffers Impacted by Cannabis Cultivation on APN 210-141-008

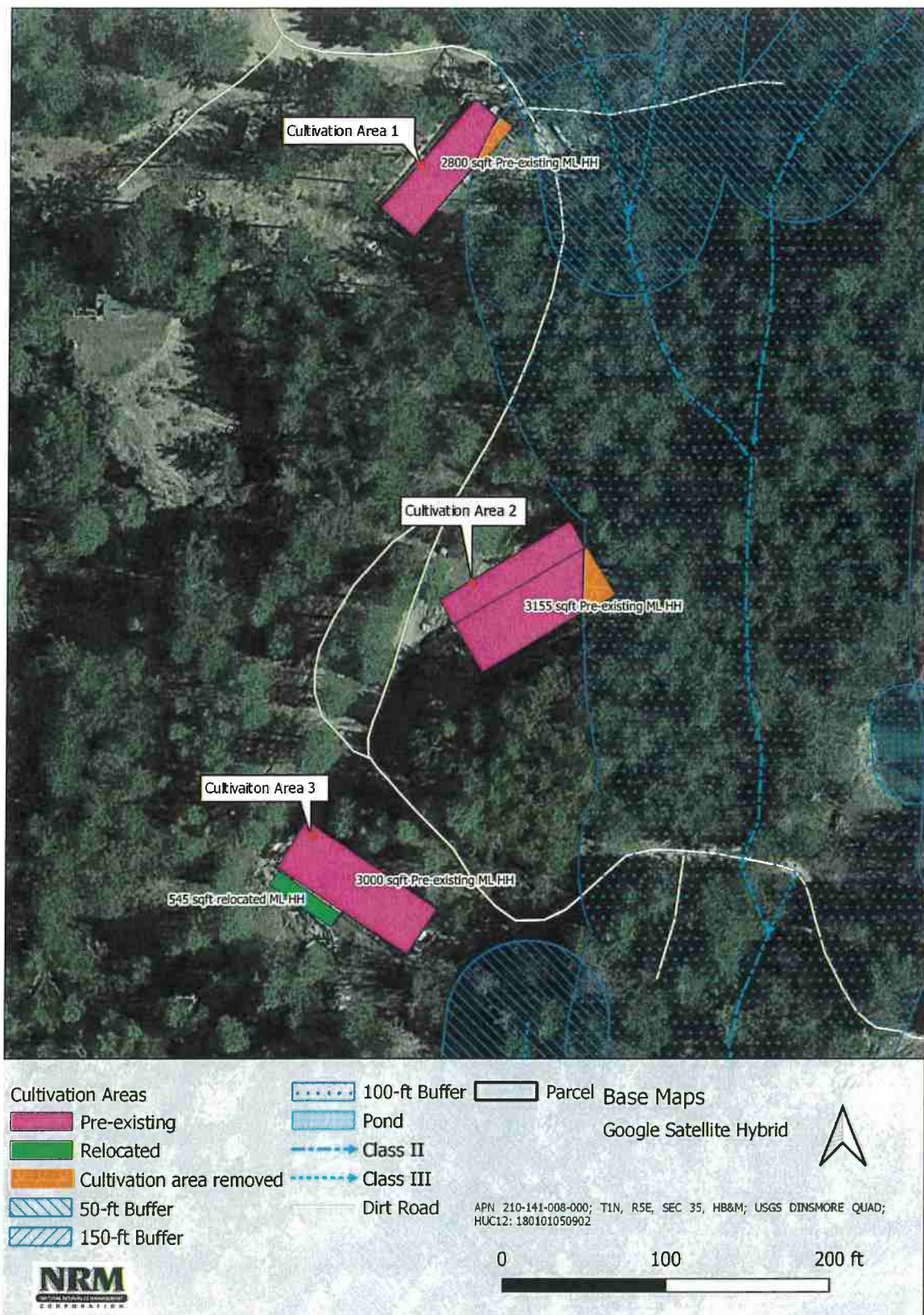


Figure 3. Cannabis Existing and Relocation, areas on APN 210-141-008

Summary

Total pre-existing square footage per the County Interim Permit is 9,500 sqft of mixed light. Approximately 545 sqft of this original cultivation space is located within Water Board buffers of streams. Relocation areas include already disturbed area adjacent to cultivation area 3. The riparian areas where cultivation is present will be cleaned up and re-vegetated with native species.

Pre-existing Cultivation Sites

The pre-existing cannabis cultivation was in hoop houses.

Approximately 200 sq ft of Hoop house in cultivation area 1 and 345 sqft of Hoop house in cultivation area 2 is located in the riparian buffers of streams (figure 2).

Relocation Area

The relocation area will be the already disturbed area adjacent to cultivation area 3 on the south west side, this area is already disturbed with soils piles that will be removed. The area is flat. A botany survey was done in 2019 (see Botany Report in the project file). No rare species were found in this area. An invasive plant species star thistle (*Centaurea sp*) is the dominate plant in this already disturbed area. The star thistle will be removed prior to building the new hoop house. Figure 3 shows the proposed site layout and square footages.

Restoration



Figure 4. Restoration Areas on APN 210-141-008

In two different areas the original cultivation footprint was within the Water Board setbacks of a class 2 creek (figure 4).

Area 1: The portion of the existing hoop house and cultivation materials in the buffer will be removed. The buffer area will be re-vegetated with native grasses. We recommend the Native Erosion Control mix from Pacific Coast Seed.

Table 1. Seeding rates for restoration areas. The seeding rates for Native Erosion Control Mix is 45 lbs per acre.

Site	Square footage	Native Erosion Control Mix
Area 1	200	0.2 lb

Area 2 has approximately 345 square feet of area that needs to be re-vegetated. Existing hoop house and cultivation materials in the buffer will be removed. We believe this area was formerly forested. The surrounding forest is dominated by Douglas fir (*Pseudotsuga menziesii*) and ponderosa pine (*Pinus ponderosa*). We recommend planting 14 trees (7 Douglas fir and 7 Ponderosa pine in the disturbed buffer area). The tree planting should be evenly dispersed over the 345 sqft area. This density will produce a tree for every 25 square feet of disturbed buffer area.

Table 2 . Tree Species to be planted in the restoration area 2

Site	Species	Life form	Number to be planted
Area 2	Douglas Fir (<i>Pseudotsuga menziesii</i>)	Tree	7
	Ponderosa Pine (<i>Pinus ponderosa</i>)	Tree	7

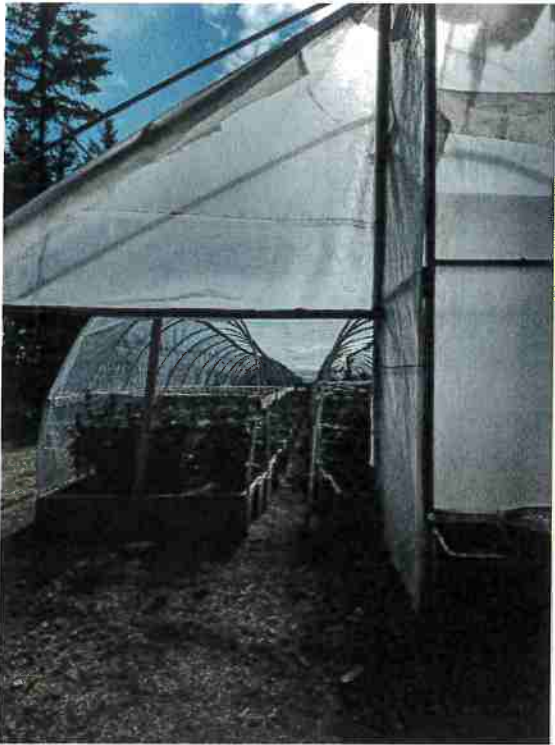
Success Criteria

In area 2 the restoration will be considered successful if after 5 years of monitoring 85% of planted trees (12 individuals) are surviving. Naturally recruiting native tree and shrub species may be counted towards the 85% survival.

In area 1 the restoration will be considered successful if after 2 years the area is fully revegetated and has no more than 20 % cover from CAL-IPC invasive species listed as high.

Monitoring

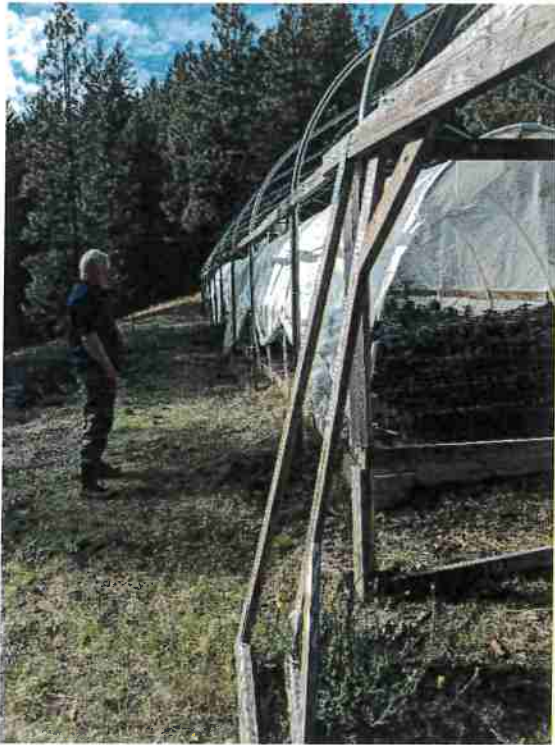
Area 2 will be visited yearly for five years, and area 1 yearly for two years, by a qualified botanist. During each monitoring visit the botanist will record the survival of the planted trees (in area 2), assess the general condition of both sites, and record the cover of invasive species in both sites. Adaptive management strategies for plant survival and invasive removal will be recommended as necessary. A yearly report will be filed with the county documenting survival, native and invasive cover and adaptive management recommendations.



Cultivation Area 1. Front portion of left side of hoop house is in the stream buffer.



Cultivation Area 2. Back right side of area is in the stream buffer



Cultivation Area 3. Person is standing on south west side were cultivation will be relocated to.



Spoils pile current sitting on area where cultivation will be relocated to. Soil and star thistle will be removed.