



BAR IS ONE INCH ON ORIGINAL DRAWING IF NOT ONE INCH ON THIS SHEET, ADJUST SCALES ACCORDINGLY	ROAD NAME: NEW NAVY BASE ROAD	ROAD MAINTENANCE: R.W. BRONKALL	COUNTY OF HUMBOLDT DEPARTMENT OF PUBLIC WORKS NEW NAVY BASE ROAD PARKING AREA MAP EXISTING PARKING RESTRICTION MAP	SHEET 1 OF 4
	ROAD NO.: F.3K010	MILE POST: 0.000-4.642		
	PROJECT NO.:	EA NO.:	DRAWN BY: RWB	
	CONTRACT NO.:		REVIEWED BY: J.L.	
	DRAWING FILE NAME:		APPROVED BY: RWB	
	PLOT DATE: 02/21/2020			

LEGEND

- RESTRICTED PARKING (NO PARKING AT ALL TIMES)
- RESTRICTED PARKING (NO PARKING 10 PM – 5 AM)
- UNRESTRICTED PARKING
- ①⑥ HUMBOLDT BAY AREA PLAN COASTAL ACCESS POINT REFERENCE No.
- ④ PARKING ZONE DESIGNATION NUMBER

NOTE: ALL OTHER ROADS SHOWN ON THIS MAP ARE NOT COUNTY MAINTAINED.

- ①⑨ NORTH COAST EXPORT COMPANY (401-121-06) – The applicant recorded an offer of dedication for a vertical access easement 25 feet in width from New Navy Base Road to the mean high tide line, and a lateral access easement extending from the tidelands to the first line of terrestrial vegetation.
- ②⑩ "REALIGNMENT OF NEW NAVY BASE ROAD: Realignment of new Navy Base Road, consistent with Sections 3.14 and 3.22, shall provide vertical public access to the oceanfront beaches. Such access shall include necessary parking facilities, trail delineation, and off-road vehicle barriers and other measures, as necessary, to discourage off-road vehicle use of adjacent vegetated dunes. To the extent feasible and consistent with dune restoration study area management objectives, two to three vertical accessways shall be provided along the realigned roadway."
- ②① "EUREKA AIRSTRIP/DAGSTRIP: This airport is currently used as a dragstrip, and for various other public recreation uses. This property has been designated for Coastal Dependent Industrial use in the land use plan. It is in public ownership."
- ②①A "CITY WALLFLOWER MITIGATION BANK – This pedestrian trail provides access through the 80-acre Mitigation Bank referred to in plan Section 3.30B(13) to the beach and dunes area from New Navy Base Road. (Amended by Res. No. 94-47, 6/7/94)"
- ②② "SAMOA BEACH: (See #23)"
- ②③ Not shown/outside mapped area.
- ②④ "SAMOA BOAT LAUNCH – This area is maintained by the County, and provides boating access to the Bay. Camping and fishing are also enjoyed at this location. A significant problem exists at this site in the form of erosion along the shoreline. (Amended by Res. No. 94-47, 6/7/94)"
- ②⑤ "SAMOA ROAD/AIRPORT ROAD – This accessway has been deleted because of conflicts with wetland values and adequate access exists nearby."
- ②⑥ "FAIRHAVEN/PARK STREET – This road once served as a public boat launch; now it serves as a cul-de-sac from which one can view the Bay."



SEE SHEET 2



BAR IS ONE INCH ON ORIGINAL DRAWING IF NOT ONE INCH ON THIS SHEET, ADJUST SCALES ACCORDINGLY	ROAD NAME: NEW NAVY BASE ROAD	ROAD MAINTENANCE: R.W. BRONKALL	COUNTY OF HUMBOLDT DEPARTMENT OF PUBLIC WORKS	SHEET 2 OF 4	
	ROAD NO: F3K010	MILE POST: 0.000-4.642			NEW NAVY BASE ROAD PARKING AREA MAP
	PROJECT NO.:	EA NO.:	DESIGNED BY: JL		EXISTING PARKING RESTRICTION MAP
	CONTRACT NO.:		DRAWN BY: RWB		
DRAWING FILE NAME:		REVIEWED BY: JL			
	PLOT DATE: 02/21/2020	APPROVED BY: RWB			

LEGEND

- RESTRICTED PARKING (NO PARKING AT ALL TIMES)
- RESTRICTED PARKING (NO PARKING 10 PM - 5 AM)
- UNRESTRICTED PARKING
- 16 HUMBOLDT BAY AREA PLAN COASTAL ACCESS POINT REFERENCE No.
- 4 PARKING ZONE DESIGNATION NUMBER

NOTE: ALL OTHER ROADS SHOWN ON THIS MAP ARE NOT COUNTY MAINTAINED.

- 12 "END OF SAMOA ROAD: These accessways have been deleted due to potential conflicts with sensitive dune habitat areas, and the presence of adequate access nearby."
- 13 "PRIVATE ROAD: These accessways [11-13] have been deleted due to potential conflicts with sensitive dune habitat areas, and the presence of adequate access nearby."
- 14 "SAMOA BEACH POWER POLE: This property, in close proximity to the Samoa community, is owned by Louisiana Pacific. The site has been heavily used by recreational ORV riders as a staging area, although the site is not officially open for ORV use. (Amended by Res. No. 94-47, 6/7/94)"
- 15 "SAMOA BEACH: This accessway has been deleted because adequate access exists nearby."
- 16 "LP DRIVE/USS MILWAUKEE MARKER: This accessway provides access to the waveslope. Parking is available and logs placed along the access corridor restrict ORVs to the traveled path. (Amended by Res. No. 94-47, 6/7/94)"
- 17 "SAMOA BEACH: This accessway provides access to the waveslope. Parking is available and logs placed along the access corridor restrict ORVs to the traveled path. (Amended by Res. No. 94-47, 6/7/94)"
- 18 "SAMOA BEACH: Previously misreferenced as leased ORV access (See #17). Site 18 is a trail opposite Humboldt Bay Municipal Water District water tank."





BAR IS ONE INCH ON ORIGINAL DRAWING IF NOT ONE INCH ON THIS SHEET, ADJUST SCALES ACCORDINGLY	ROAD NAME: NEW NAVY BASE ROAD	ROAD MAINTENANCE: R.W. BRONKALL
	ROAD NO: F3K010	MILE POST: 0.000-4.642
	PROJECT NO.:	EA NO.:
	CONTRACT NO.:	DRAWN BY: RWB
	DRAWING FILE NAME:	REVIEWED BY: JL
PLOT DATE: 02/21/2020	APPROVED BY: RWB	

COUNTY OF HUMBOLDT DEPARTMENT OF PUBLIC WORKS NEW NAVY BASE ROAD PARKING AREA MAP PROPOSED PARKING RESTRICTION MAP

SHEET **3**
OF
4

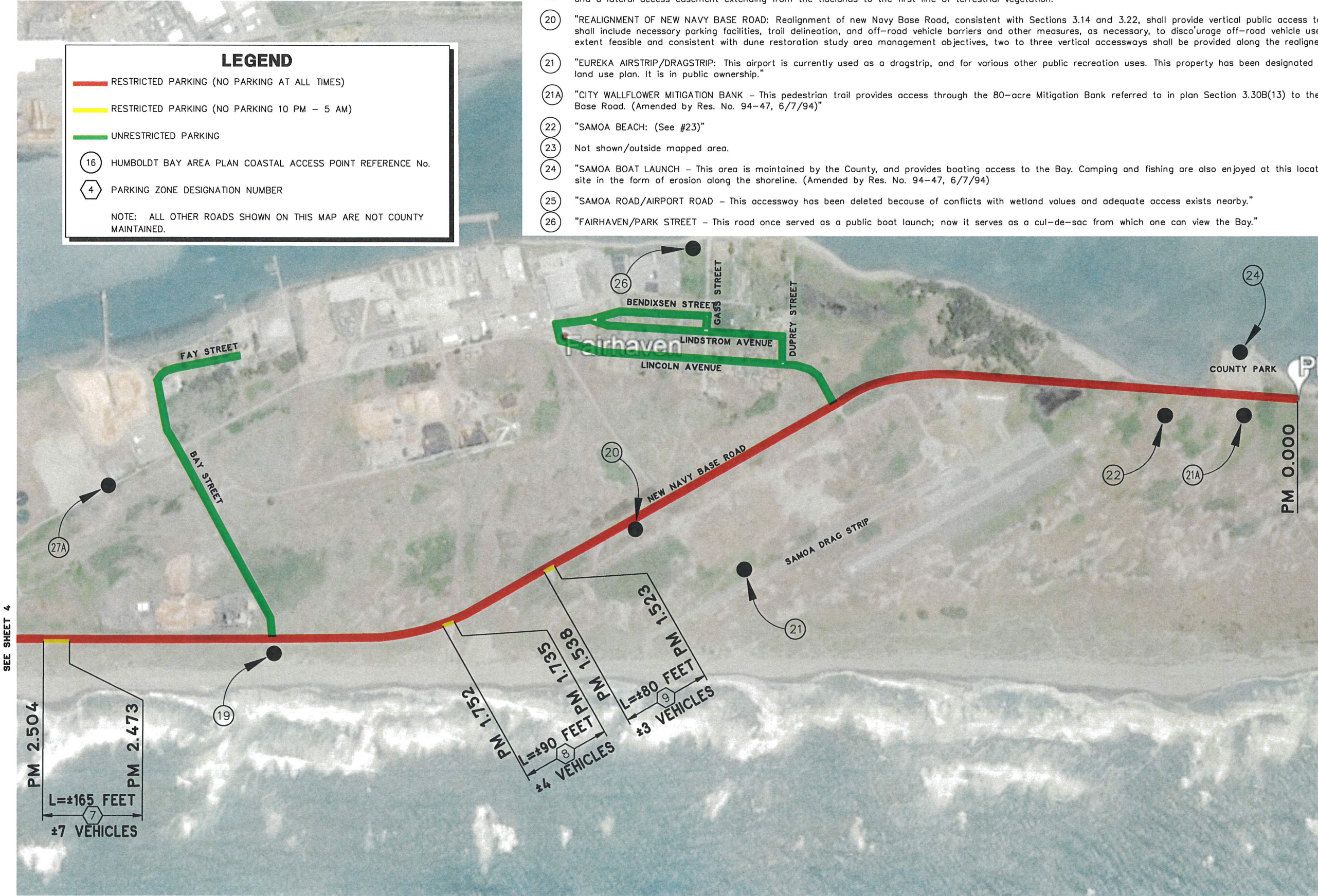
LEGEND

— RESTRICTED PARKING (NO PARKING AT ALL TIMES)
— RESTRICTED PARKING (NO PARKING 10 PM – 5 AM)
— UNRESTRICTED PARKING

(16) HUMBOLDT BAY AREA PLAN COASTAL ACCESS POINT REFERENCE No.
 (4) PARKING ZONE DESIGNATION NUMBER

NOTE: ALL OTHER ROADS SHOWN ON THIS MAP ARE NOT COUNTY MAINTAINED.

- (19) NORTH COAST EXPORT COMPANY (401-121-06) – The applicant recorded an offer of dedication for a vertical access easement 25 feet in width from New Navy Base Road to the mean high tide line, and a lateral access easement extending from the tidelands to the first line of terrestrial vegetation.
- (20) "REALIGNMENT OF NEW NAVY BASE ROAD: Realignment of new Navy Base Road, consistent with Sections 3.14 and 3.22, shall provide vertical public access to the oceanfront beaches. Such access shall include necessary parking facilities, trail delineation, and off-road vehicle barriers and other measures, as necessary, to discourage off-road vehicle use of adjacent vegetated dunes. To the extent feasible and consistent with dune restoration study area management objectives, two to three vertical accessways shall be provided along the realigned roadway."
- (21) "EUREKA AIRSTRIP/DRAGSTRIIP: This airport is currently used as a dragstrip, and for various other public recreation uses. This property has been designated for Coastal Dependent Industrial use in the land use plan. It is in public ownership."
- (21A) "CITY WALLFLOWER MITIGATION BANK – This pedestrian trail provides access through the 80-acre Mitigation Bank referred to in plan Section 3.30B(13) to the beach and dunes area from New Navy Base Road. (Amended by Res. No. 94-47, 6/7/94)"
- (22) "SAMOA BEACH: (See #23)"
- (23) Not shown/outside mapped area.
- (24) "SAMOA BOAT LAUNCH – This area is maintained by the County, and provides boating access to the Bay. Camping and fishing are also enjoyed at this location. A significant problem exists at this site in the form of erosion along the shoreline. (Amended by Res. No. 94-47, 6/7/94)"
- (25) "SAMOA ROAD/AIRPORT ROAD – This accessway has been deleted because of conflicts with wetland values and adequate access exists nearby."
- (26) "FAIRHAVEN/PARK STREET – This road once served as a public boat launch; now it serves as a cul-de-sac from which one can view the Bay."





BAR IS ONE INCH ON ORIGINAL DRAWING IF NOT ONE INCH ON THIS SHEET, ADJUST SCALES ACCORDINGLY	ROAD NAME: NEW NAVY BASE ROAD	ROAD MAINTENANCE: R.W. BRONKALL	COUNTY OF HUMBOLDT DEPARTMENT OF PUBLIC WORKS NEW NAVY BASE ROAD PARKING AREA MAP PROPOSED PARKING RESTRICTION MAP	SHEET 4 OF 4
	ROAD NO: F3K010	MILE POST: 0.000-4.642		
	PROJECT NO.:	EA NO.:		
	CONTRACT NO.:	DRAWN BY: RWB		
	DRAWING FILE NAME:	REVIEWED BY: JL		
	PLOT DATE: 02/21/2020	APPROVED BY: RWB		

LEGEND

- RESTRICTED PARKING (NO PARKING AT ALL TIMES)
- RESTRICTED PARKING (NO PARKING 10 PM – 5 AM)
- UNRESTRICTED PARKING
- ⑩ HUMBOLDT BAY AREA PLAN COASTAL ACCESS POINT REFERENCE No.
- ④ PARKING ZONE DESIGNATION NUMBER

NOTE: ALL OTHER ROADS SHOWN ON THIS MAP ARE NOT COUNTY MAINTAINED.

- ⑫ "END OF SAMOA ROAD: These accessways have been deleted due to potential conflicts with sensitive dune habitat areas, and the presence of adequate access nearby."
- ⑬ "PRIVATE ROAD: These accessways [11-13] have been deleted due to potential conflicts with sensitive dune habitat areas, and the presence of adequate access nearby."
- ⑭ "SAMOA BEACH POWER POLE: This property, in close proximity to the Samoa community, is owned by Louisiana Pacific. The site has been heavily used by recreational ORV riders as a staging area, although the site is not officially open for ORV use. (Amended by Res. No. 94-47, 6/7/94)"
- ⑮ "SAMOA BEACH: This accessway has been deleted because adequate access exists nearby."
- ⑯ "LP DRIVE/USS MILWAUKEE MARKER: This accessway provides access to the waveslope. Parking is available and logs placed along the access corridor restrict ORVs to the traveled path. (Amended by Res. No. 94-47, 6/7/94)"
- ⑰ "SAMOA BEACH: This accessway provides access to the waveslope. Parking is available and logs placed along the access corridor restrict ORVs to the traveled path.(Amended by Res. No. 94-47, 6/7/94)"
- ⑱ "SAMOA BEACH: Previously misreferenced as leased ORV access (See #17). Site 18 is a trail opposite Humboldt Bay Municipal Water District water tank."



ABOVE: EXAMPLE OF EXISTING NO PARKING SIGN ON NEW NAVY BASE ROAD

NO PARKING SIGNS ARE PROPOSED TO BE INSTALLED APPROXIMATELY 3 FEET FROM EDGE OF PAVEMENT. SIGNS TO BE INSTALLED AT THE BEGINNING POINTS AND ENDING POINTS OF THE PARKING ZONES. WHEN A PARKING ZONE IS LONGER THAN 800 FEET, ADDITIONAL SIGNS WILL BE PLACED APPROXIMATELY 400 FEET APART. SIGNS ARE TO BE PLACED IN SUCH A MANNER AS TO BE VISIBLE TO THE PUBLIC TO ENSURE PARKING REGULATIONS ARE OBSERVED. APPROXIMATELY 150 SIGNS WILL BE INSTALLED ALONG 4.642 MILES OF ROAD.

APPROXIMATELY 69 RESTRICTED PARKING SPACES (NO PARKING 10 PM TO 5 AM) WILL BE PROVIDED IN 9 AREAS ALONG THE 4.642 MILE LONG ROAD.



SEE SHEET 3