

# ACCESSIBILITY IMPROVEMENTS FOR PROBATION CAMPUS

2002 HARRISON AVE., EUREKA, CALIFORNIA

Copyright © 2019

All ideas, designs, arrangements and plans indicated or represented by this drawing are created by and the property of NICHOLS MELBURG and ROSSETTO and were created, evolved and developed for use on, and in conjunction with, the specific project. None of such ideas, designs, arrangements or plans shall be used by, or disclosed to any person, firm or corporation for any purpose whatsoever without the written permission of NICHOLS MELBURG and ROSSETTO.

**NICHOLS  
MELBURG  
ROSSETTO**  
ARCHITECTS + ENGINEERS  
300 KNOLLCREST DRIVE  
REDDING, CA 96002  
(530) 222-3300 (530) 222-3538 FAX  
<http://www.nmrdesign.com>

CONSULTANTS

## GENERAL NOTES

### GENERAL:

- ALL WORK AND MATERIALS SHALL BE IN FULL ACCORDANCE WITH ALL APPLICABLE ADOPTED ORDINANCES AND CODES. ANY DISCREPANCIES BETWEEN THESE CODES AND THE CONSTRUCTION DOCUMENTS SHOULD IMMEDIATELY BE BROUGHT TO THE ATTENTION OF THE COUNTY. THE CONSTRUCTION DOCUMENTS SHALL NOT BE CONSTRUED AS TO PERMIT WORK THAT DOES COMPLY WITH THESE CODES.
- DIMENSIONS SHALL TAKE PRECEDENCE OVER ITEMS AS GRAPHICALLY DEPICTED IN THESE DRAWINGS. DO NOT SCALE DRAWINGS. DIMENSIONS NOTED AS "CLEAR" (CLR) ARE TAKEN TO THE FACE OF FINISH MATERIALS. VERIFY DIMENSIONS OF PREFABRICATED AND MANUFACTURED ITEMS AND COORDINATE ROUGH OPENINGS ACCORDINGLY.
- WHERE CONSTRUCTION DETAILS ARE NOT SHOWN OR NOTED FOR ANY PART OF THE WORK, THE DETAILS SHALL BE THE SAME AS FOR OTHER SIMILAR WORK SHOWN ON DRAWINGS. IF SIMILAR WORK IS NOT DETAILED IN DRAWINGS, WORK SHALL FOLLOW INDUSTRY STANDARDS AND MANUFACTURERS' RECOMMENDATIONS AS ACCEPTABLE TO THE COUNTY.
- ALL CONSTRUCTION SHALL BE IN STRICT CONFORMANCE WITH MANUFACTURERS' LATEST PUBLISHED SPECIFICATIONS AND INSTRUCTIONS. ALL DISCREPANCIES BETWEEN THESE SPECIFICATIONS AND INSTRUCTIONS AND THE CONTRACT DOCUMENTS, SHALL BE BROUGHT TO THE ATTENTION OF THE COUNTY IN WRITING PRIOR TO COMMENCING WORK.
- VERIFY ALL DIMENSIONS, EXISTING UTILITY LOCATIONS, AND EXISTING CONDITIONS AFFECTED BY THE CONTRACT PRIOR TO STARTING CONSTRUCTION. ANY DISCREPANCIES OR INCONSISTENCIES FOUND SHALL BE BROUGHT TO THE COUNTY'S ATTENTION BEFORE WORK PROCEEDS.

## BUILDING ANALYSIS

### PROBATION BUILDING

OCCUPANCY CLASSIFICATION:	B
CONSTRUCTION TYPE:	V-B (NON-SPRINKLERED)
TOTAL BUILDING GROSS AREA:	10,400 SF (5,200 SF PER STORY)
ALLOWABLE BUILDING HEIGHT LIMITS: (PER CBC TABLE 503)	2 STORY / 40 FT
ALLOWABLE BUILDING AREA: (PER CBC TABLE 503)	TYPE V-B = 9,000 SF
BUILDING AREA MODIFICATION: (CBC 506)	FRONTAGE INCREASE (CBC 506) NOT USED (NO FIRE SPRINKLERS)
MODIFIED ALLOWABLE BUILDING AREA > BUILDING GROSS AREA	9,000 > 5,200 : OKAY
TOTAL OCCUPANTS	1 OCC. PER 100 SF = 104 OCCUPANTS

NOTE: WORK ON THIS PROJECT DOES NOT INCREASE SQUARE FOOTAGE, OR IMPACT THE BUILDING ANALYSIS INCLUDED ABOVE. THE INCLUDED BUILDING ANALYSIS IS FOR EXISTING BUILDINGS AFFECTED BY THE CURRENT SCOPE OF WORK.

## PROJECT NARRATIVE

### PROJECT SCOPE

THIS PROJECT IS LOCATED IN HUMBOLDT COUNTY, IN THE CITY OF EUREKA. IT CONSISTS OF SEVERAL ACCESSIBILITY IMPROVEMENTS WITHIN THE EXISTING HUMBOLDT COUNTY PROBATION CAMPUS. CONSTRUCTION ACTIVITY WILL TAKE PLACE IN THE HUMBOLDT COUNTY PROBATION BUILDING.

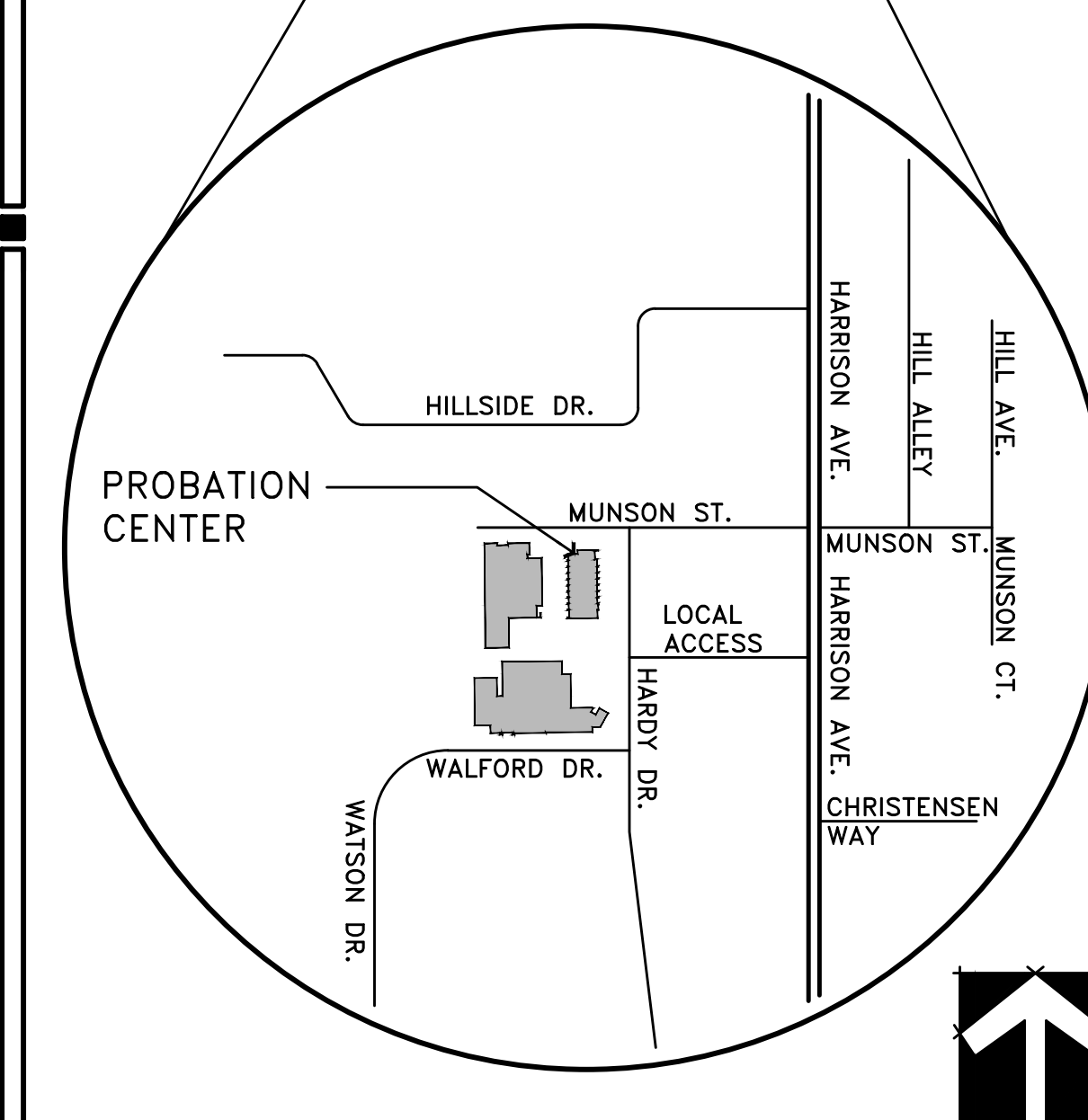
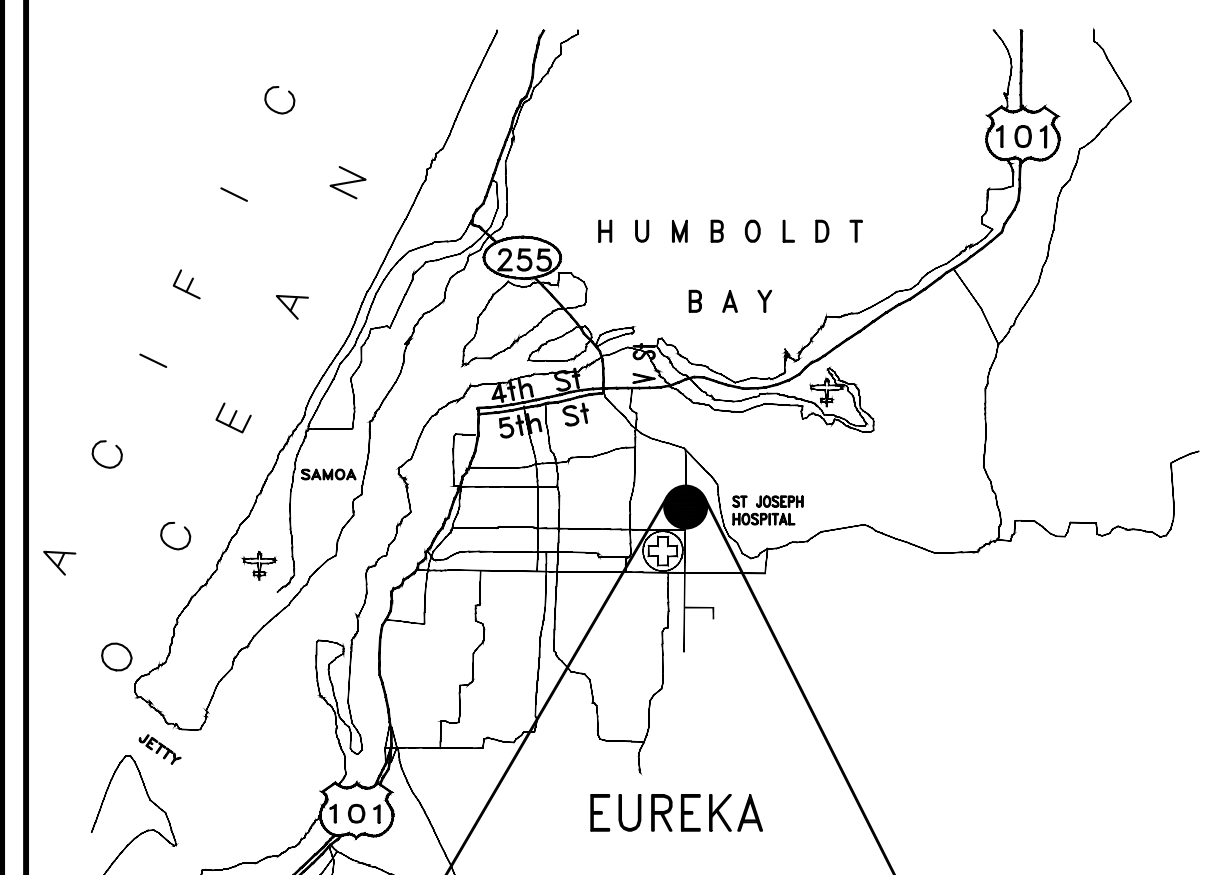
WORK WILL CONSIST OF IMPROVEMENTS TO THE EXISTING BUILDING TO ACHIEVE COMPLIANCE WITH STANDARDS AND REGULATIONS RELATING TO THE AMERICANS WITH DISABILITIES ACT (ADA). WORK WILL TAKE PLACE IN 2 PHASES, ALLOWING FOR FULL OPERATION OF ALL FACILITIES DURING CONSTRUCTION. REFER TO THE SITE PLAN FOR PHASE IDENTIFICATION.

## DRAWING INDEX

### DWG. # DESCRIPTION

GENERAL	
G001	COVER SHEET
ARCHITECTURAL	
A010	SITE PLAN
A201P	PROBATION BUILDING OVERALL FLOOR PLAN
A221P	ENLARGED FLOOR PLANS RESTROOM / LOBBY
A222P	ENLARGED FLOOR PLANS OFFICE / CONFERENCE ROOM
A223P	ENLARGED SITE PLAN EAST ENTRANCE
A224P	ENLARGED FLOOR PLAN NORTH STAIR
A225P	ENLARGED FLOOR PLAN SOUTH STAIR
A610	DETAILS
A611	DETAILS

## VICINITY MAP



## DEFERRED SUBMITTALS

- FIRE ALARM
- FIRE SPRINKLER SYSTEM

## CODES / STANDARDS

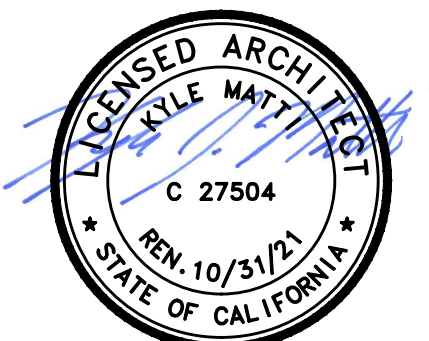
APPLICABLE CODES:  
ALL WORK PERFORMED & PRODUCTS FURNISHED SHALL COMPLY AS APPLICABLE WITH THE LATEST REGULATIONS OF:

- TITLE 19 C.C.R., PUBLIC SAFETY, STATE FIRE MARSHAL REGULATIONS
- 2016 BUILDING STANDARDS ADMINISTRATIVE CODE, PART 1, TITLE 24 C.C.R.
- 2016 CALIFORNIA BUILDING CODE (CBC), PART 2, TITLE 24 C.C.R.
- 2016 CALIFORNIA ELECTRICAL CODE (CEC), PART 3, TITLE 24 C.C.R.
- 2016 CALIFORNIA MECHANICAL CODE (CMC), PART 4, TITLE 24 C.C.R.
- 2016 CALIFORNIA PLUMBING CODE (CPC), PART 5, TITLE 24 C.C.R.
- 2016 CALIFORNIA ENERGY CODE, PART 6, TITLE 24 C.C.R.
- 2016 CALIFORNIA FIRE CODE, PART 9, TITLE 24 C.C.R.
- 2016 CALIFORNIA EXISTING BUILDING CODE, PART 10, TITLE 24 C.C.R.
- 2016 CALIFORNIA GREEN BUILDING STANDARDS CODE, PART 11, TITLE 24 C.C.R.
- 2016 CALIFORNIA REFERENCED STANDARDS CODE, PART 12, TITLE 24 C.C.R.

APPLICABLE STANDARDS:  
ALL WORK PERFORMED & PRODUCTS FURNISHED SHALL COMPLY AS APPLICABLE WITH THE LATEST REGULATIONS OF:

- 2016 NFPA 13 AUTOMATIC SPRINKLER SYSTEMS (CALIFORNIA AMENDED)
- 2013 NFPA 14 INSTALLATION OF STANDPIPE AND HOSE SYSTEMS (CALIFORNIA AMENDED)
- 2013 NFPA 20, PUMPS FOR FIRE PROTECTION
- 2013 NFPA 24, FIRE SERVICE MAINS (CALIFORNIA AMENDED)
- 2013 NFPA 72 NATIONAL FIRE ALARM CODE (CALIFORNIA AMENDED)

## LICENSE STAMPS



PROJECT NAME  
**ACCESSIBILITY IMPROVEMENTS FOR HUMBOLDT COUNTY PROBATION CAMPUS**  
2002 HARRISON AVE  
EUREKA, CALIFORNIA 95501

## SHEET TITLE

COVER SHEET

DRAWING STATUS  
CONSTRUCTION DOCUMENTS

## REVISIONS

Sym.	Description	By	Date

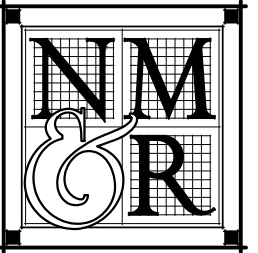
Drawn By	CD
Checked By	DRC
Date Drawn	12-4-2019
Scale	AS NOTED
Job No.	17-6430

## SHEET No.

G001







NICHOLS  
MELBURG

ROSSETTO

ARCHITECTS + ENGINEERS

300 KNOLLCREST DRIVE

REDDING, CA 96002

(530) 222-3300 (530) 222-3538 FAX

http://www.nmrdesign.com

CONSULTANTS

LICENSE STAMPS



PROJECT NAME

ACCESSIBILITY  
IMPROVEMENTS  
FOR

HUMBOLDT  
COUNTY  
PROBATION  
CAMPUS

2002 HARRISON AVE.  
EUREKA, CALIFORNIA 95501

SHEET TITLE

PROBATION BUILDING  
OVERALL FLOOR PLAN

DRAWING STATUS

CONSTRUCTION  
DOCUMENTS

REVISIONS

Sym.	Description	By	Date

Drawn By	CD
----------	----

Checked By	DCR
------------	-----

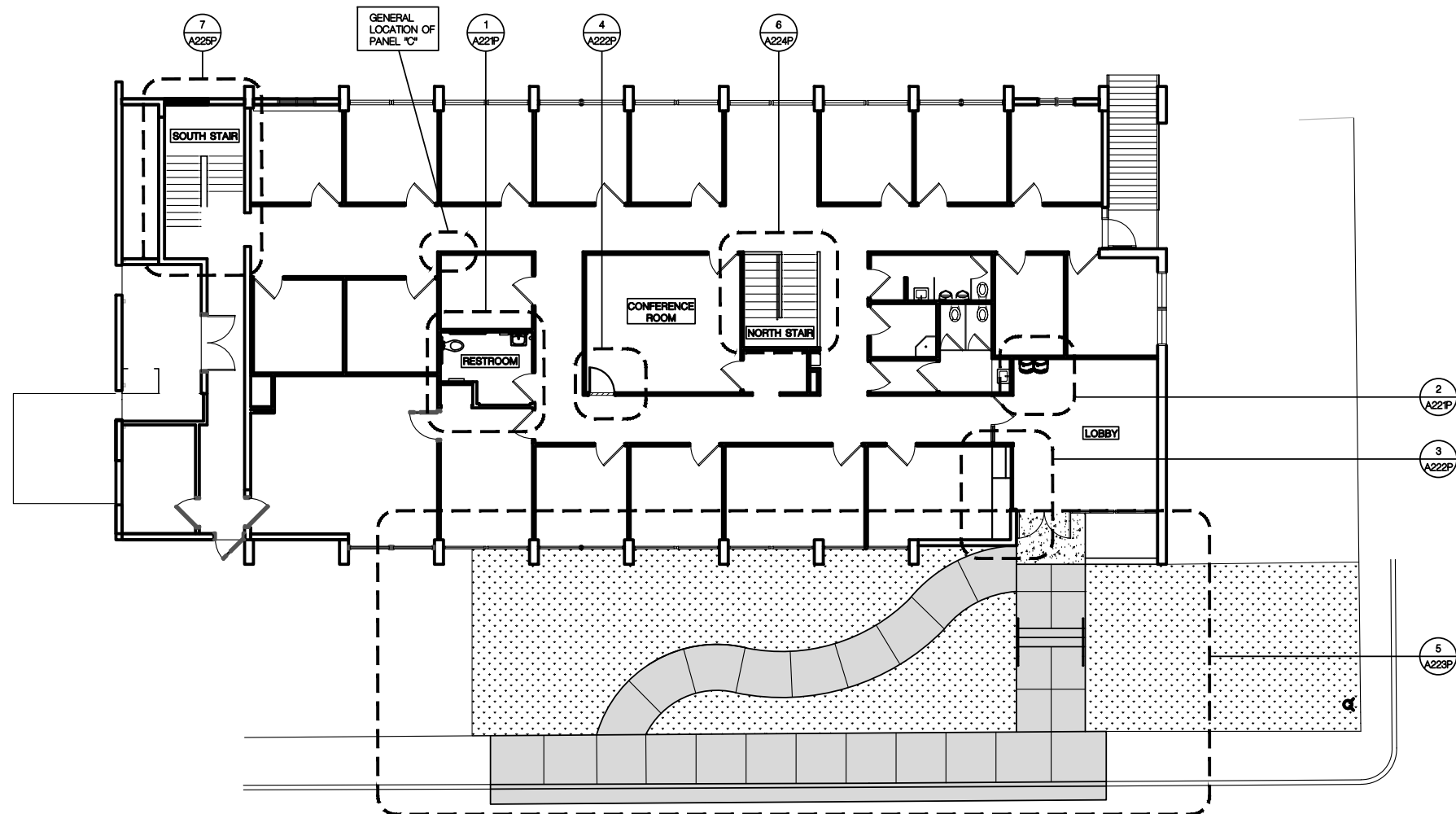
Date Drawn	12-4-2019
------------	-----------

Scale	1/8"=1'-0"
-------	------------

Job No.	17-6430
---------	---------

SHEET No.

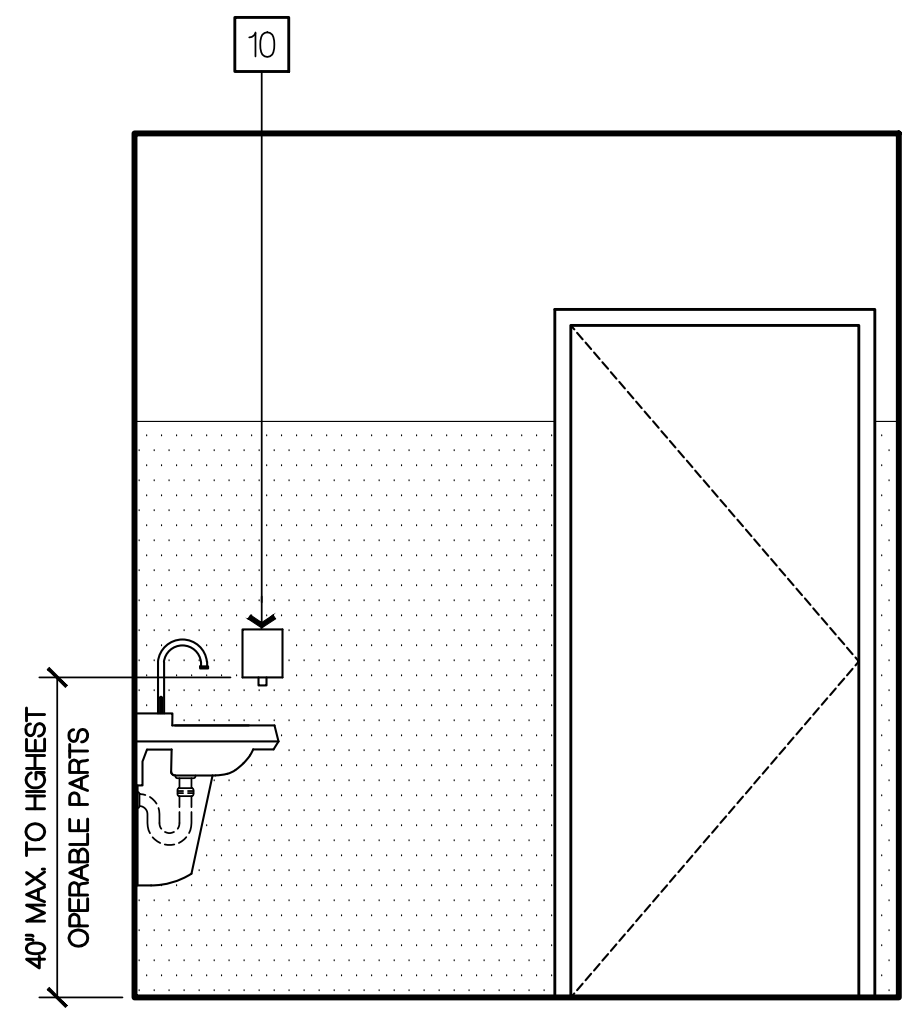
A201P



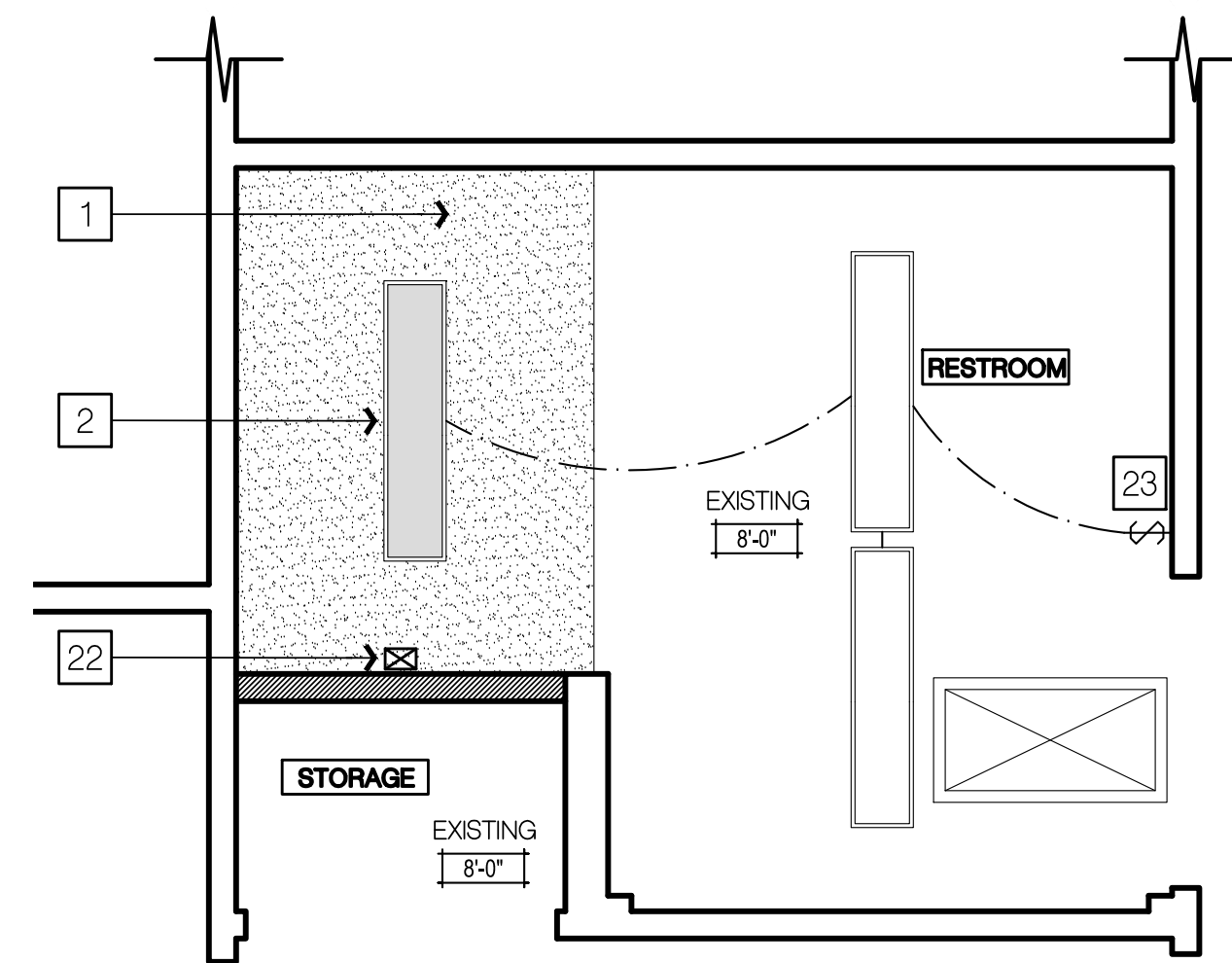
**PROBATION BUILDING OVERALL MAIN FLOOR PLAN**

SCALE 1/8" = 1'-0"

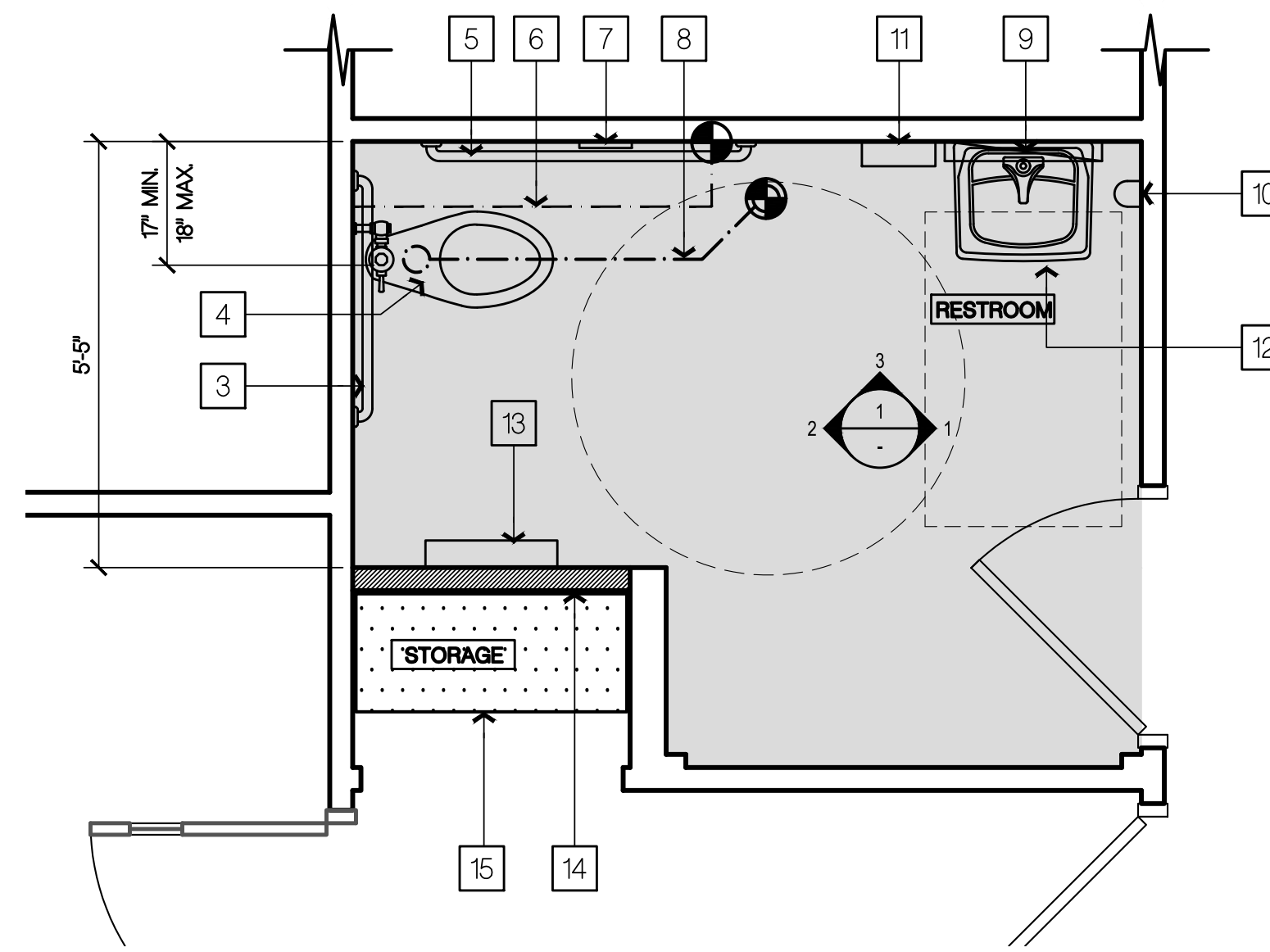




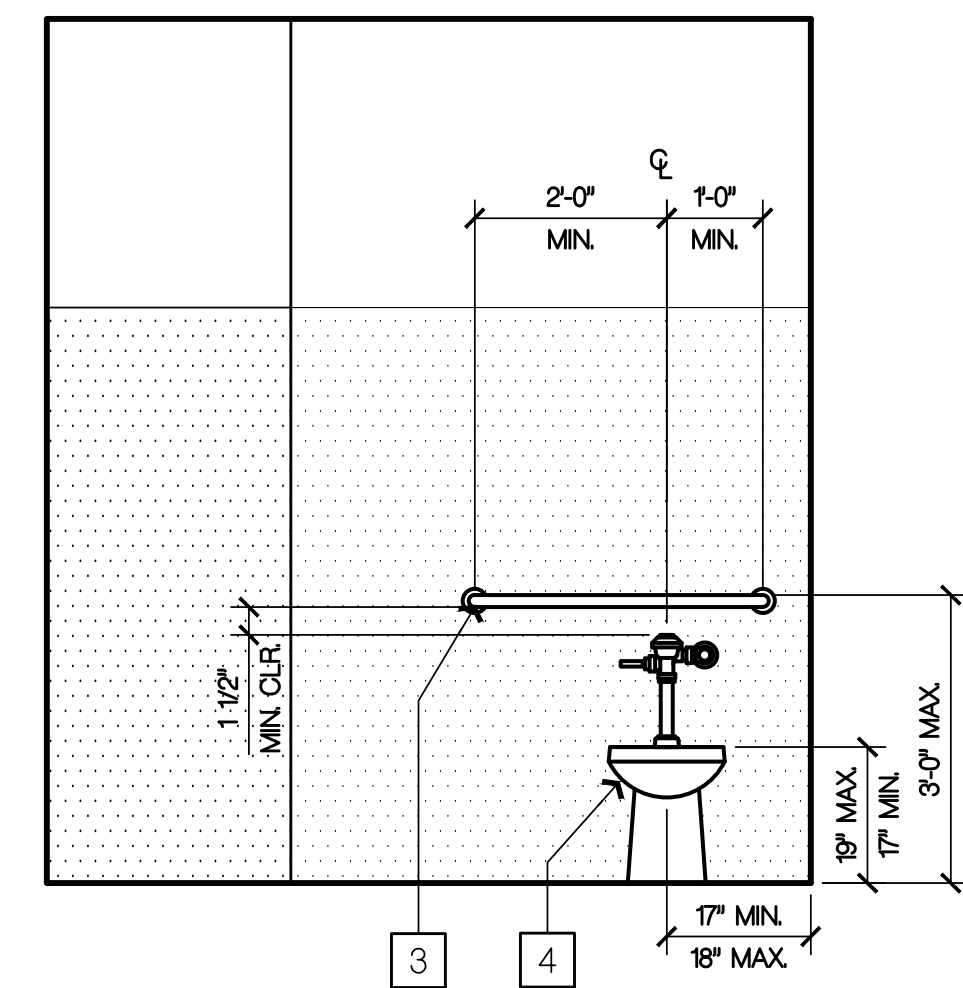
**1 NORTH RESTROOM**



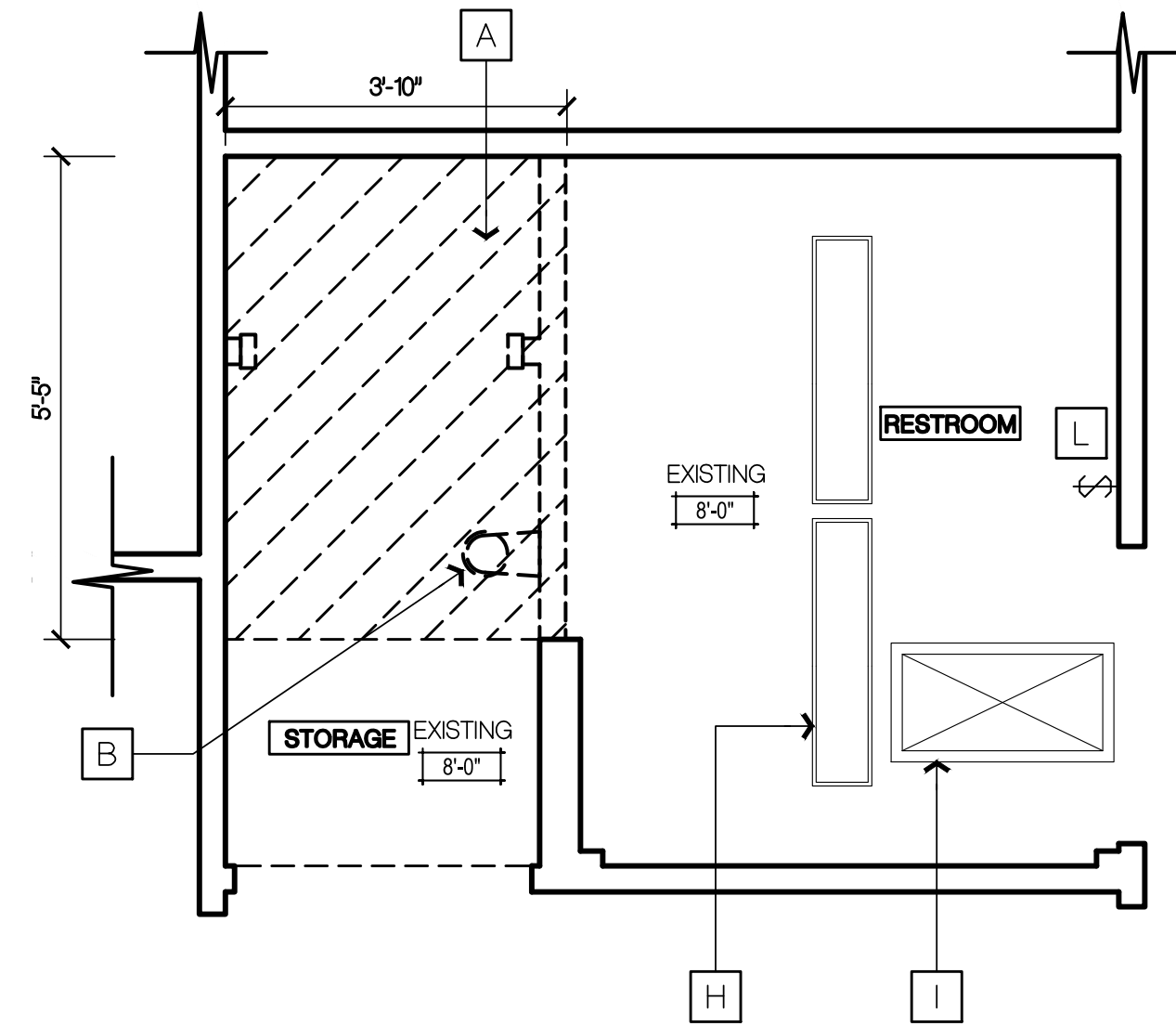
**1B CEILING PLAN**  
SCALE: 1/2" = 1'-0"



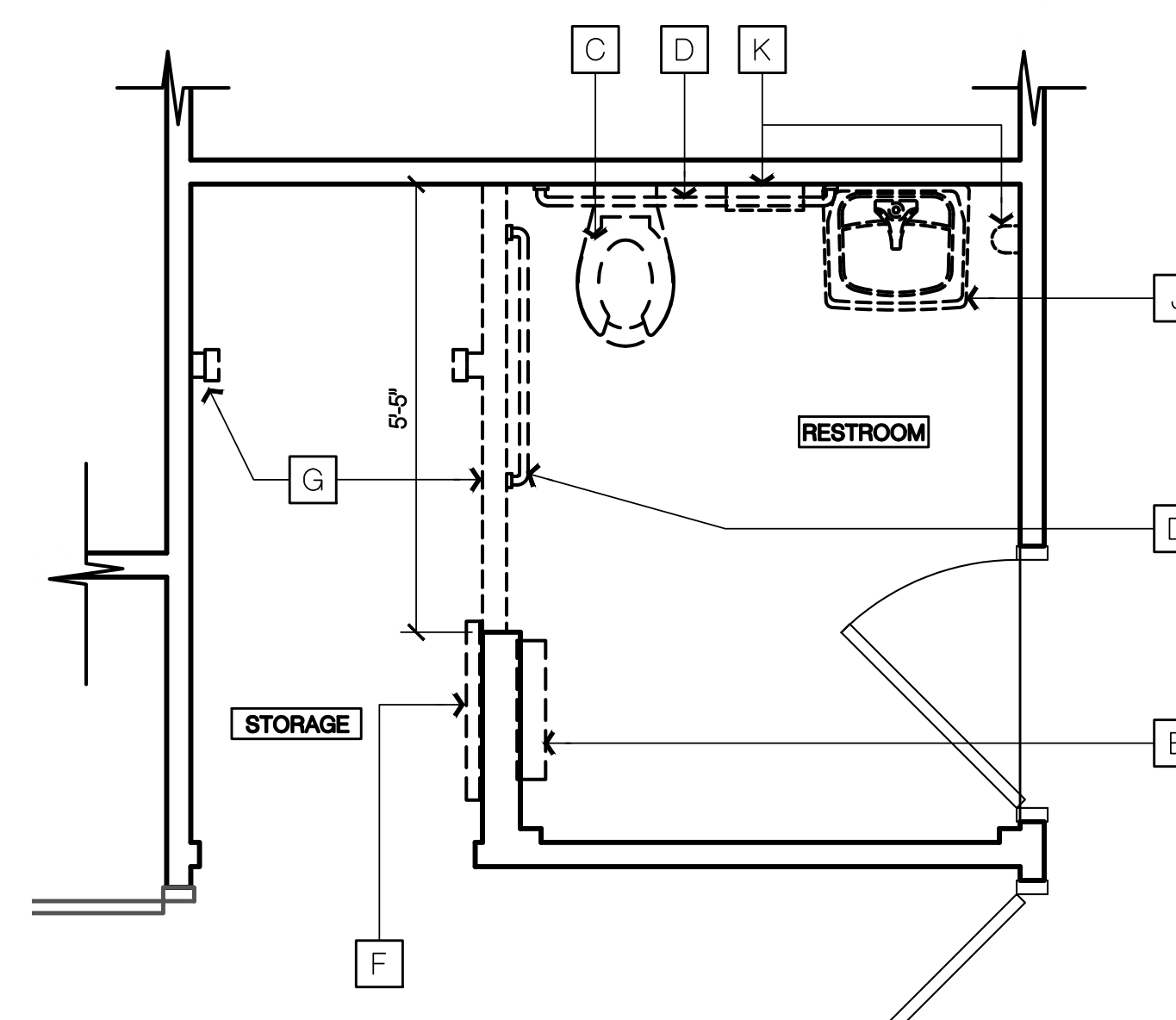
**1A NEW WORK PLAN**  
SCALE: 1/2" = 1'-0"



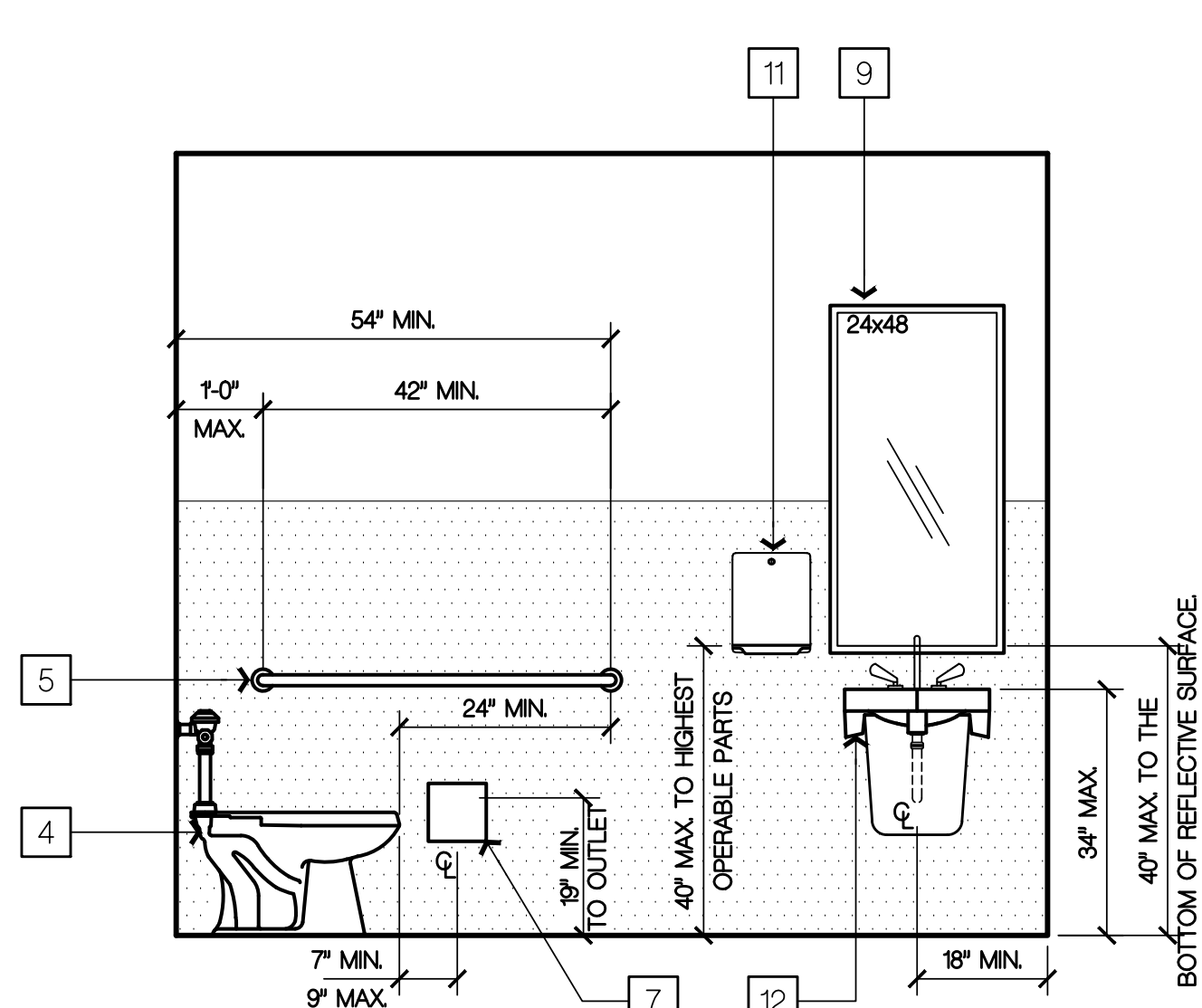
**2 SOUTH RESTROOM**



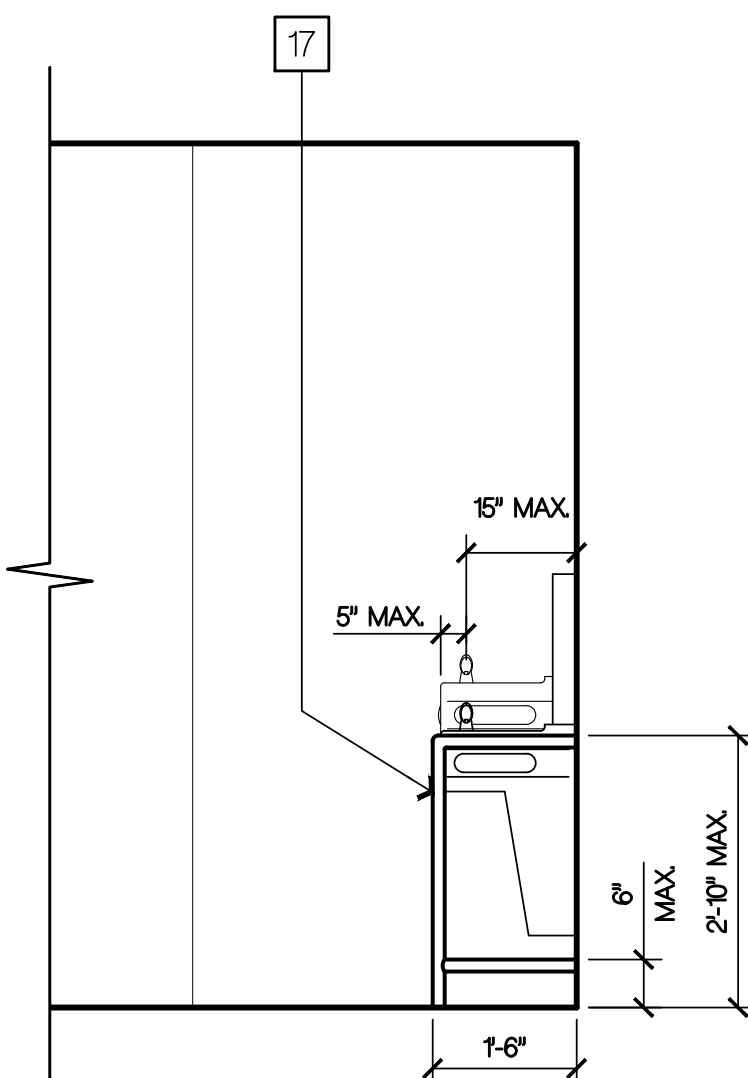
**1D DEMOLITION CEILING**  
SCALE: 1/2" = 1'-0"



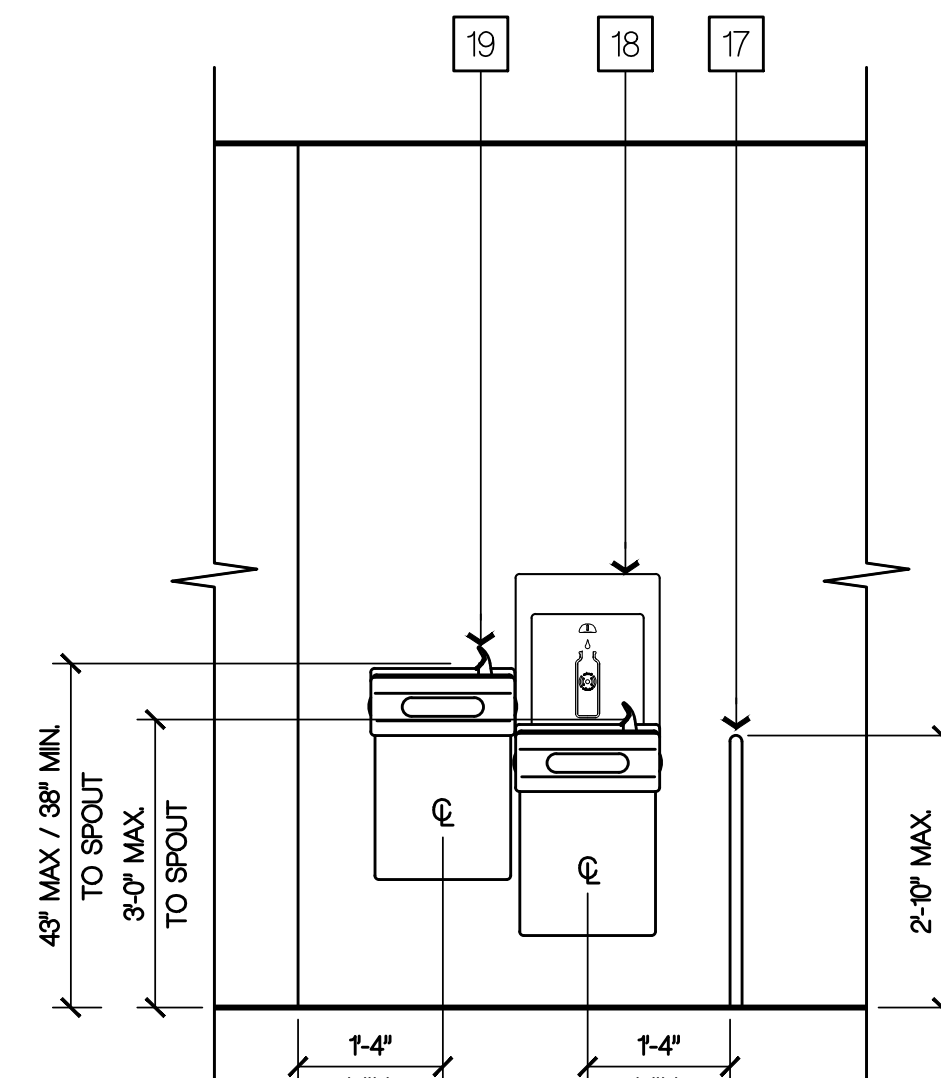
**1C DEMOLITION PLAN**  
SCALE: 1/2" = 1'-0"



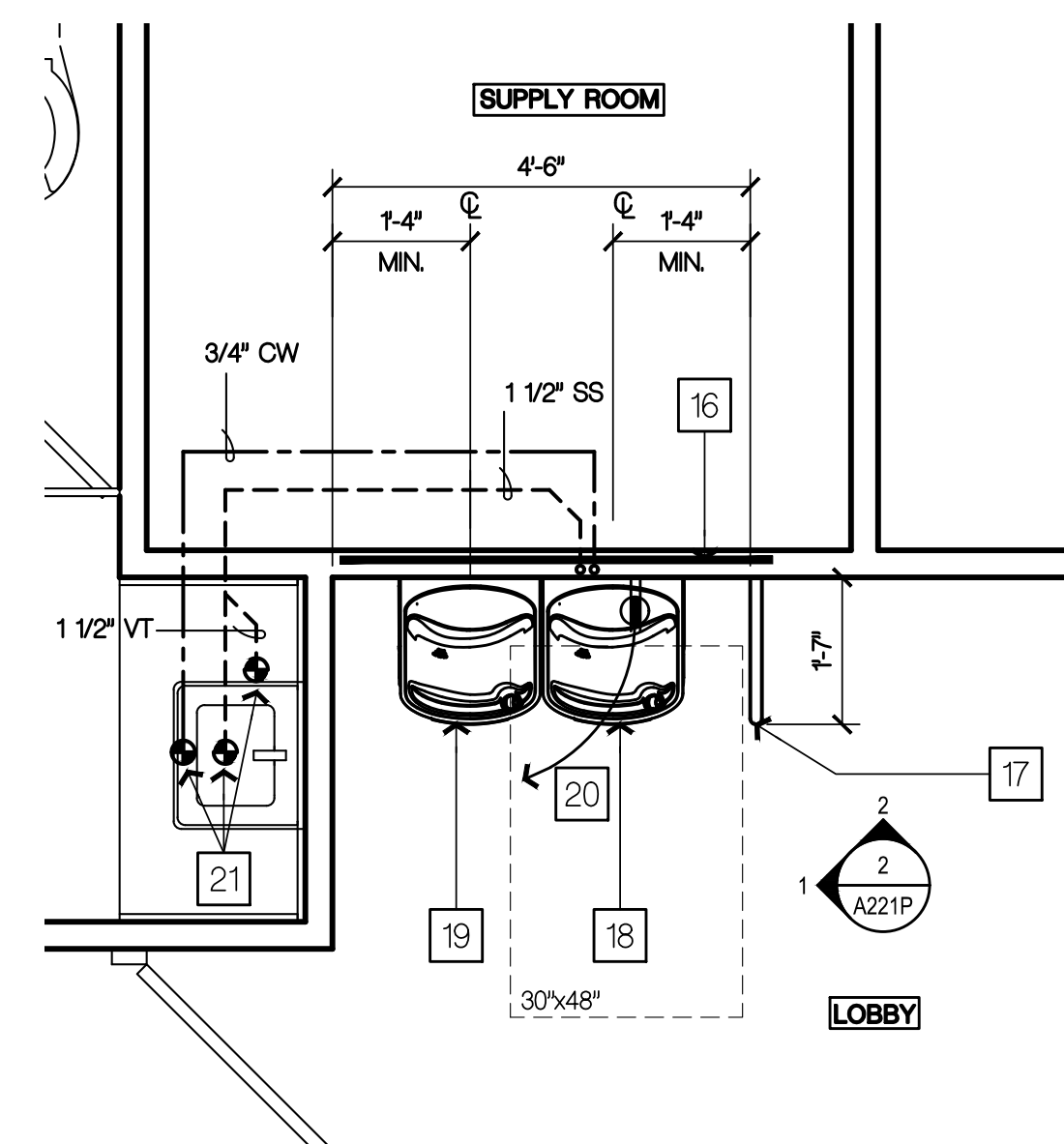
**3 WEST RESTROOM**



**1 SOUTH LOBBY**



**2 WEST**



**2A FLOOR PLAN**  
SCALE: 1/2" = 1'-0"

- ### NEW WORK SHEET NOTES
- (ALL ITEMS ARE NEW UNLESS NOTED (E) OR EXISTING)
- 1 2x6" CEILING JOISTS @ 16" O.C. WITH 5/8" GYP. BOARD, MATCH EXISTING.
  - 2 SURFACE MOUNT LIGHT FIXTURE. CONNECT TO (E) CIRCUIT.
  - 3 36" GRAB BAR (SEE DETAIL 1/A611).
  - 4 ADA TOILET.
  - 5 48" GRAB BAR (SEE DETAIL 1/A611).
  - 6 CONNECT 1/2" DIA. COLD WATER LINE TO TOILET.
  - 7 (E) TOILET PAPER DISPENSER.
  - 8 CONNECT 4" DIA. SANITARY SEWER LINE TO TOILET. REMOVE AND REPLACE CEILING TILES BELOW OR SUBFLOOR FOR ACCESS.
  - 9 (E) MIRROR 24"x48".
  - 10 (E) SOAP DISPENSER.
  - 11 (E) PAPER TOWEL DISPENSER.
  - 12 ADA LAVATORY (SEE DETAIL 6/A610).
  - 13 (E) SEAT COVER DISPENSER (40" MAX. HEIGHT TO TOP OF FIXTURE).
  - 14 2"x4" WALL @ 16" O.C. WITH 5/8" GYP. BOARD BOTH SIDES AND BATT INSULATION.
  - 15 SHELVES (SEE DETAIL 3/A611).
  - 16 INSTALL 2X BLOCKING FOR DRINKING FOUNTAIN. REPAIR, PATCH AND PAINT GYP. BOARD (SEE DETAIL 2/A612).
  - 17 1 1/2" DIA. HANDRAIL (SEE DETAIL 11/A610).
  - 18 DRINKING FOUNTAIN W/ WATER DISPENSER (SEE DETAIL 9/A610 AND 10/A610).
  - 19 DRINKING FOUNTAIN (SEE DETAIL 10/A610).
  - 20 20A, 3 WRE, 120V RECEPTACLE FOR DRINKING FOUNTAIN. CONNECT TO PANEL "C" INDICATED ON SHEET A201P.
  - 21 POINT OF CONNECTION TO (E) PIPES.
  - 22 ADD HORN/STROBE INTEGRATED IN THE FIRE ALARM, 80" TO 96" AFF.
  - 23 (E) WALL SWITCH.

- ### NEW WORK GENERAL NOTES
- 1 INSTALL SHEET VINYL FLOORING WITH 8" COVER BASE IN RESTROOM.
  - 2 INSTALL FRP WAINSCOT ON ALL RESTROOM WALLS 6'-0" TALL.
  - 3 PAINT ALL WALLS AND CEILING WITH SEMI GLOSS.
  - 4 PATCH, REPAIR, PREPARE ALL RESTROOM SURFACES FOR FINISH MATERIALS.
  - 5 FOR PLUMBING CONNECTIONS OF DRINKING FOUNTAIN AT LOBBY, CUT HOLE IN GYP. BOARD CEILING AND SOUND PANELS IN FIRST FLOOR BREAK ROOM. REPAIR AND REPLACE GYP. BOARD CEILING AND ADHESIVE BACKED SOUND PANELS WHEN PROJECT IS COMPLETE.
  - 6 REUSE (E) RESTROOM DISPENSERS AND (E) MIRROR.

- ### DEMOLITION SHEET NOTES
- (ALL ITEMS ARE EXISTING UNLESS NOTED (N) OR NEW)
- A REMOVE CEILING.
  - B REMOVE LIGHTING FIXTURE.
  - C REMOVE PLUMBING FIXTURE, COMPLETE CAP SUPPLY AND WASTE WATER.
  - D REMOVE GRAB BAR.
  - E REMOVE SEAT COVER DISPENSER.
  - F REMOVE KEY CABINETS, SPEAKER AND LIGHT FIXTURE. TURN OVER TO OWNER.
  - G REMOVE WALL COMPLETELY.
  - H LIGHT FIXTURE TO REMAIN.
  - I CEILING ACCESS TO REMAIN.
  - J REMOVE LAVATORY AND MIRROR. REUSE MIRROR FOR NEW WORK.
  - K REMOVE PAPER TOWEL AND SOAP DISPENSERS. REUSE FOR NEW WORK.
  - L WALL SWITCH. FIELD VERIFY 48" AFF. TO TOP OF BOX.

Copyright © 2019

All ideas, designs, arrangements and plans indicated or represented by this drawing are owned by and the property of NICHOLS MELBURG & ROSSETTO. No part of this drawing, design, arrangement or plan shall be used by, or disclosed to any person, firm or corporation for any purpose whatsoever without the written permission of NICHOLS MELBURG & ROSSETTO.

**NICHOLS MELBURG & ROSSETTO**  
ARCHITECTS + ENGINEERS

300 KNOLLCREST DRIVE  
REDDING, CA 96002  
(530) 222-3300 (530) 222-3538 FAX  
<http://www.nmrdesign.com>

**CONSULTANTS**

**LICENSE STAMPS**

PROJECT NAME  
**ACCESSIBILITY IMPROVEMENTS FOR HUMBOLDT COUNTY PROBATION CAMPUS**

2002 HARRISON AVE.  
EUREKA, CALIFORNIA 95501

SHEET TITLE  
**ENLARGED FLOOR PLANS**

DRAWING STATUS  
**CONSTRUCTION DOCUMENTS**

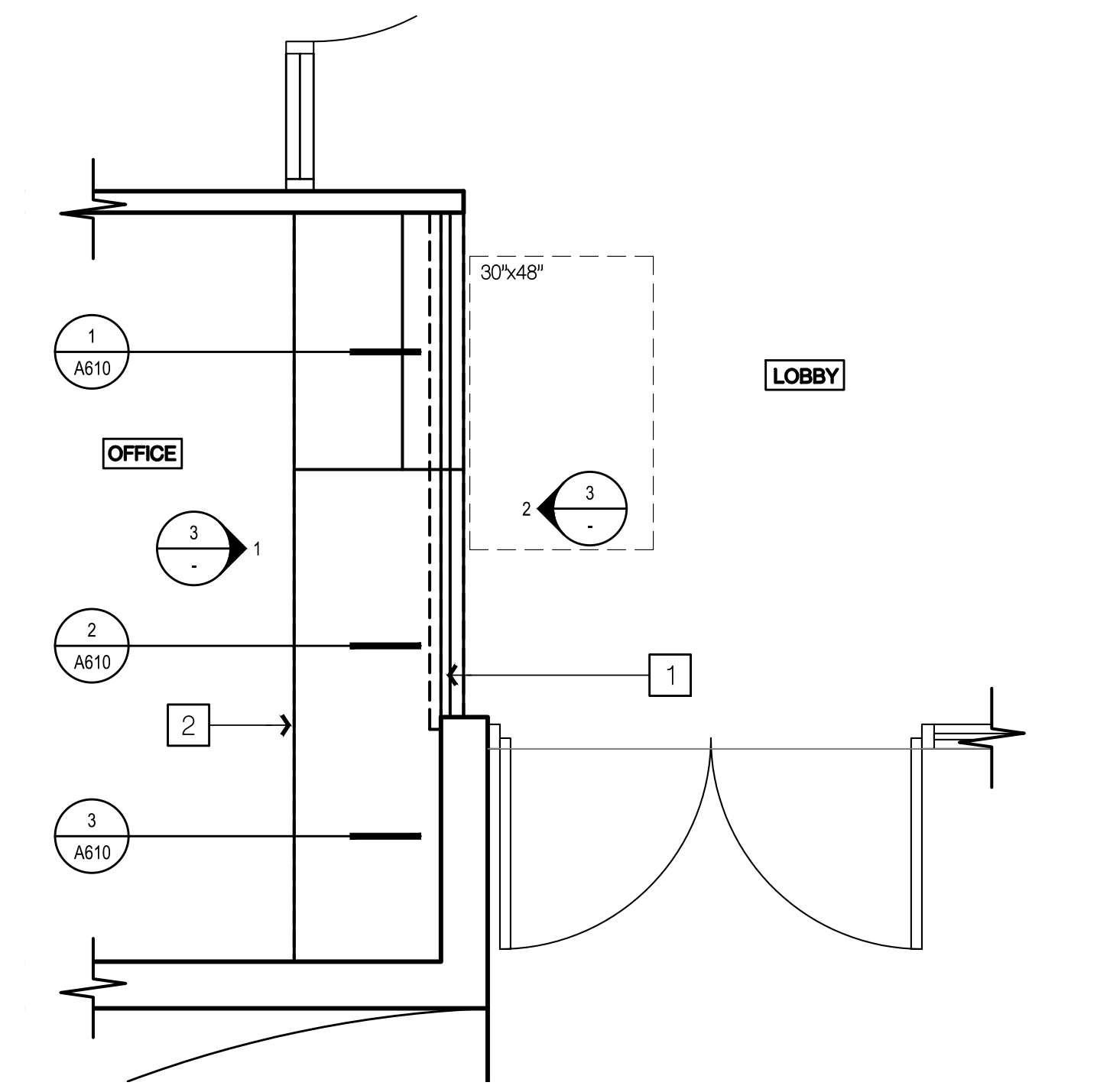
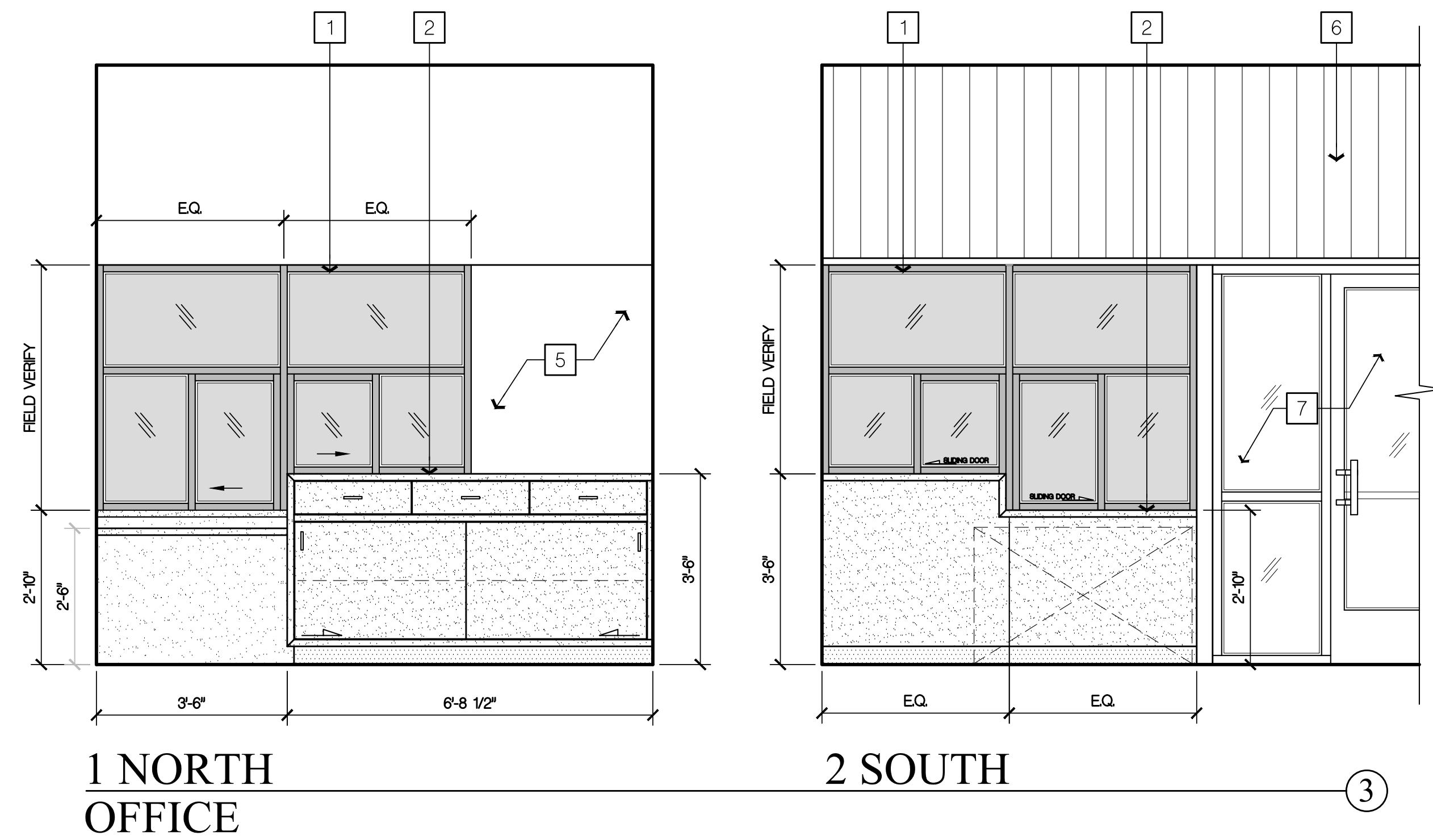
**REVISIONS**

Sym.	Description	By	Date

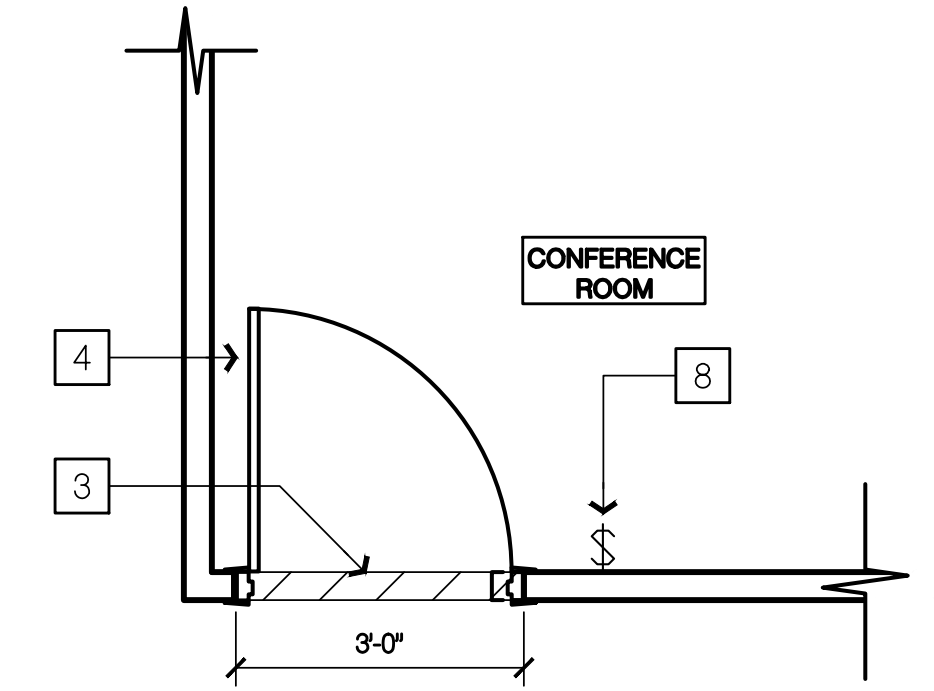
<b>Drawn By</b>	CD
<b>Checked By</b>	DRC
<b>Date Drawn</b>	12-4-2019
<b>Scale</b>	1/2"=1'-0"
<b>Job No.</b>	17-6430

SHEET No.  
**A221P**

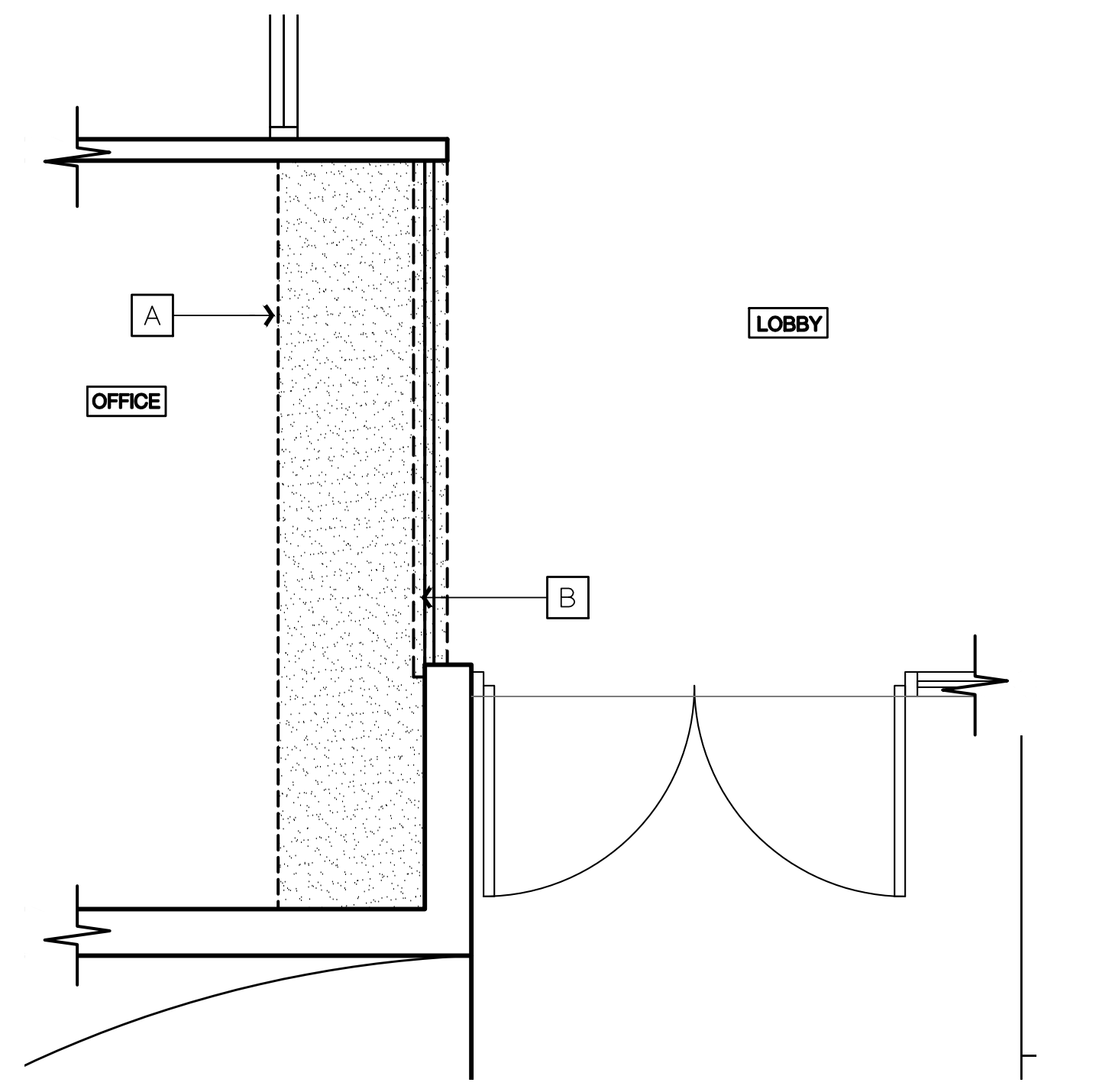




- ### NEW WORK SHEET NOTES
- (ALL ITEMS ARE NEW, UNLESS NOTED (E) OR EXISTING)
- 1 PRE-FINISHED ALUMINUM WINDOW.
  - 2 INSTALL CASEWORK.
  - 3 VCT THRESHOLD.
  - 4 3070 SOLID CORE WOOD DOOR WITH WOOD JAMB AND CASING (SEE DETAIL 2/A611).
  - 5 PAINT WALL TO MATCH EXISTING.
  - 6 (E) WOOD SOFFIT TO REMAIN.
  - 7 (E) DOOR TO REMAIN.
  - 8 INSTALL LIGHT SWITCH.

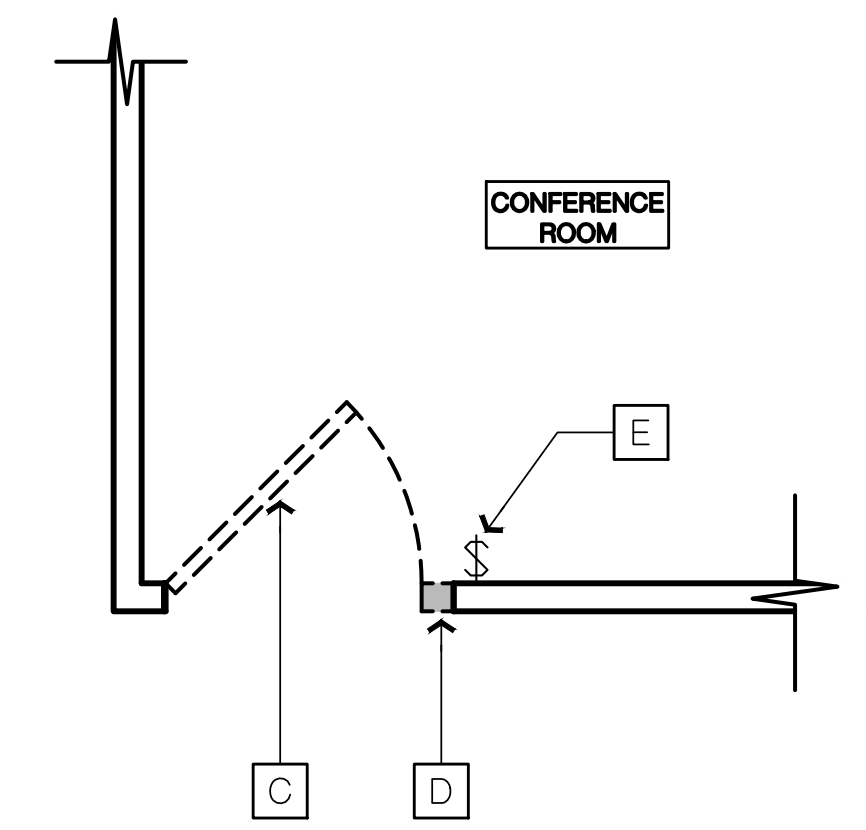


- ### DEMOLITION SHEET NOTES
- (ALL ITEMS ARE EXISTING, UNLESS NOTED (N) OR (NEW))
- A REMOVE COUNTER TOP AND CASEWORK COMPLETELY
  - B REMOVE WINDOW COMPLETELY
  - C REMOVE DOOR, JAMB, CASING AND PREPARE FOR NEW DOOR
  - D REMOVE WALL TO INCREASE OPENING WIDTH FOR NEW DOOR.
  - E REMOVE LIGHT SWITCH.



**4A NEW WORK PLAN**

SCALE: 1/2" = 1'-0"



**4B DEMOLITION PLAN**

SCALE: 1/2" = 1'-0"

Copyright © 2019

All ideas, designs, arrangements and plans indicated or represented by this drawing are owned by and the property of NICHOLS MELBURG & ROSSETTO, and may be treated, copied and developed for use or, and in conjunction with, the specified project. None of such ideas, designs, arrangements or plans shall be used by, or disclosed to any person, firm or corporation for any purpose whatsoever without the written permission of NICHOLS MELBURG & ROSSETTO.

**NICHOLS MELBURG ROSSETTO ARCHITECTS + ENGINEERS**

300 KNOLLCREST DRIVE  
REDDING, CA 96002  
(530) 222-3300 (530) 222-3538 FAX  
http://www.nmrdesign.com

**CONSULTANTS**

**LICENSE STAMPS**

LICENSED ARCHITECT  
KYLE MATT  
C 27504  
REV. 10/31/21  
STATE OF CALIFORNIA

**PROJECT NAME**

**ACCESSIBILITY IMPROVEMENTS FOR HUMBOLDT COUNTY PROBATION CAMPUS**

2002 HARRISON AVE  
EUREKA, CALIFORNIA 95501

**SHEET TITLE**

**ENLARGED FLOOR PLANS**

**DRAWING STATUS**

**CONSTRUCTION DOCUMENTS**

**REVISIONS**

Sym.	Description	By	Date

<b>Drawn By</b>	CD
<b>Checked By</b>	DRC
<b>Date Drawn</b>	12-4-2019
<b>Scale</b>	1/2"=1'-0"
<b>Job No.</b>	17-6430

**SHEET No.**

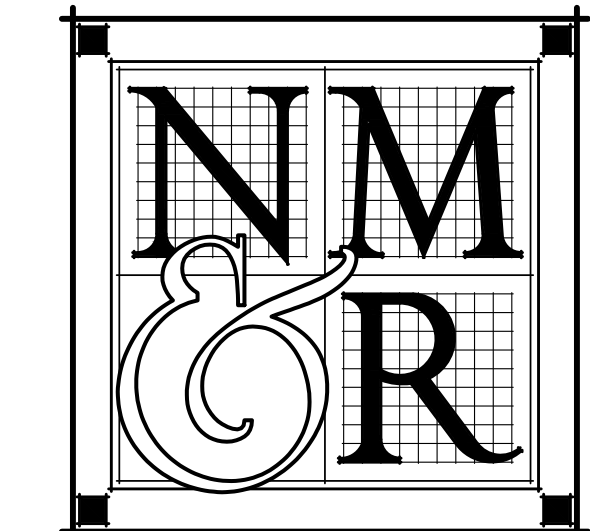
**A222P**

Logn Name: CristianO  
Plt Date: December 04, 2019 - 10:07 am  
File Name: N:\Projects\000\000\000\000\17-6430 Humboldt County ADA Compliance\15 Probation & Regional Facility Drawings\15CFR-FRD-entg the lobby of m-A222P.dwg  
PEPS: V:\P\10 - 12BNO\1 NEW - A\FPO-Print-2019





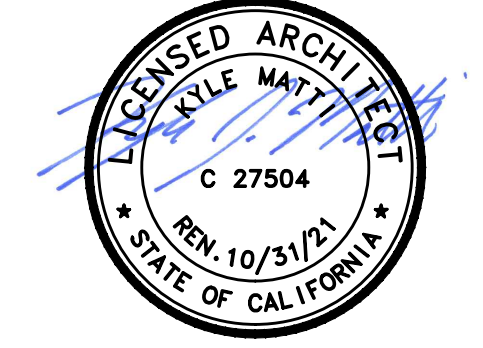
Copyright © 2019  
 All ideas, designs, arrangements and plans indicated or represented by this drawing are created by and the property of NICHOLS MELBURG and ROSSETTO and were created, evolved and developed for use on, and in conjunction with, the specified project. None of such ideas, designs, arrangements or plans shall be used by, or disclosed to any person, firm or corporation for any purpose whatsoever without the written permission of NICHOLS MELBURG and ROSSETTO.



**NICHOLS MELBURG & ROSSETTO**  
 ARCHITECTS + ENGINEERS  
 300 KNOLLCREST DRIVE  
 REDDING, CA 96002  
 (530) 222-3300 (530) 222-3538 FAX  
 http://www.nmrdesign.com

CONSULTANTS

LICENSE STAMPS



PROJECT NAME

**ACCESSIBILITY IMPROVEMENTS FOR HUMBOLDT COUNTY PROBATION CAMPUS**

2002 HARRISON AVE  
 EUREKA, CALIFORNIA 95501

SHEET TITLE

**ENLARGED FLOOR PLANS**

DRAWING STATUS

**CONSTRUCTION DOCUMENTS**

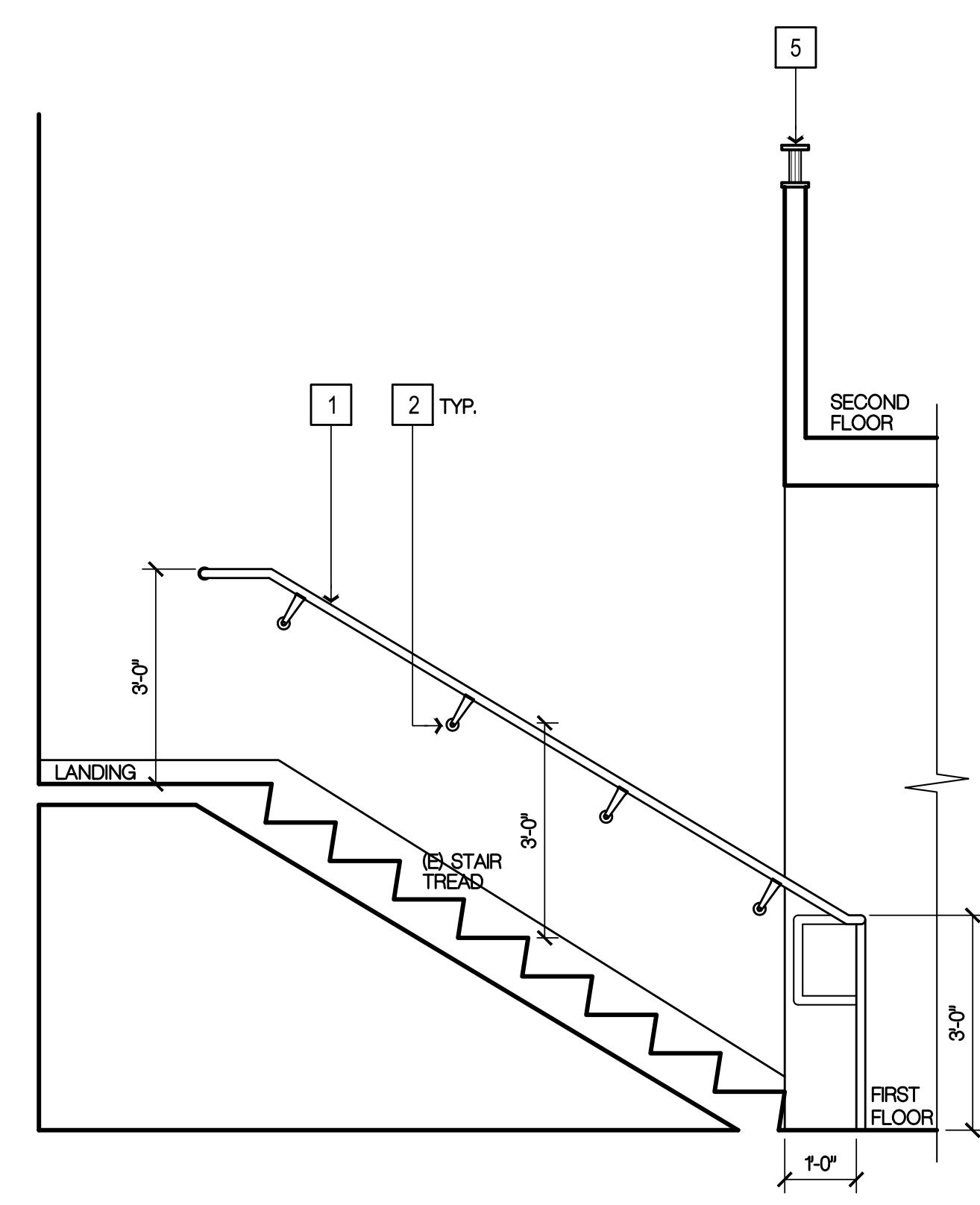
REVISIONS

Sym.	Description	By	Date

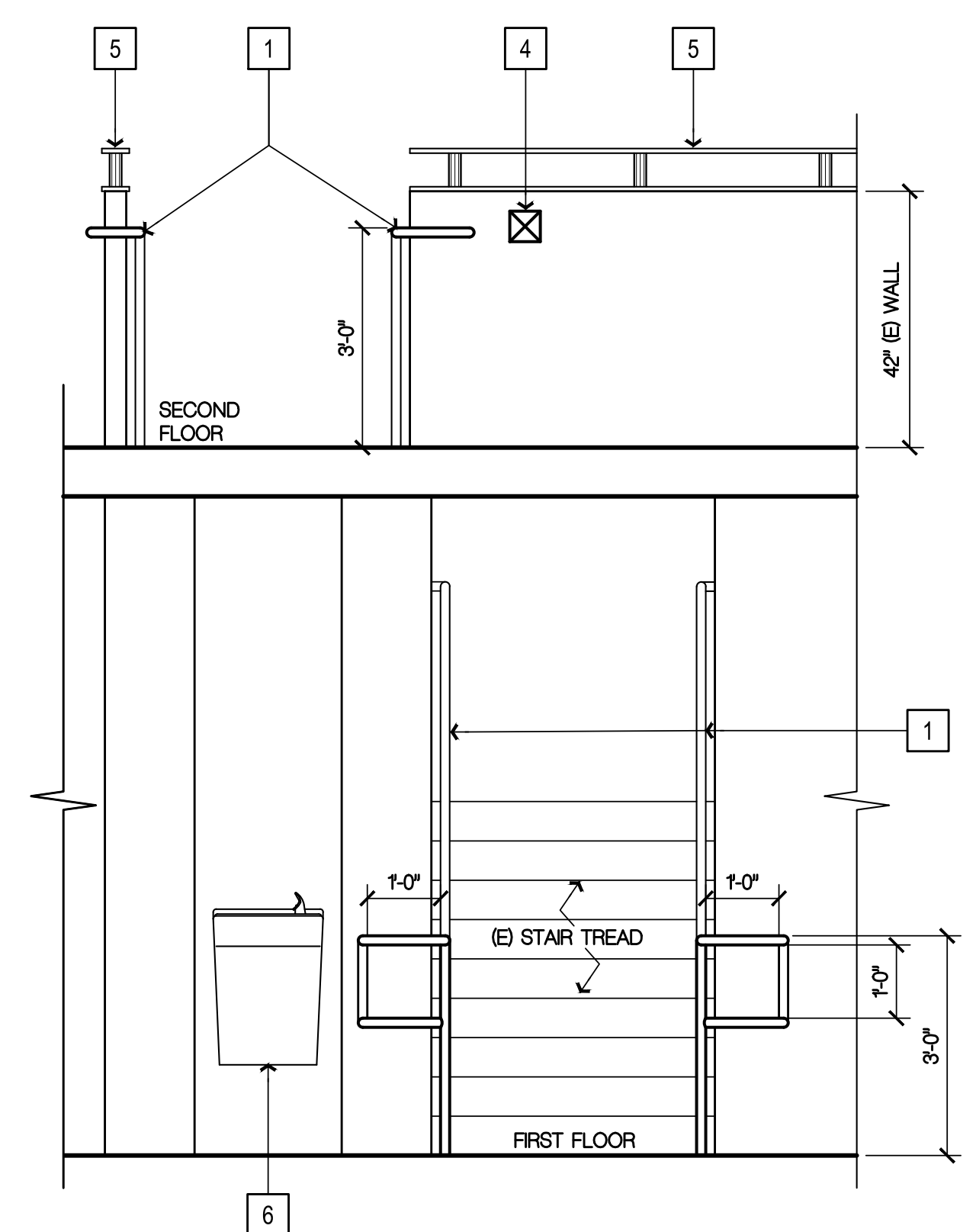
Drawn By	CD
Checked By	DRC
Date Drawn	12-4-2019
Scale	1/2"=1'-0"
Job No.	17-6430

SHEET No.

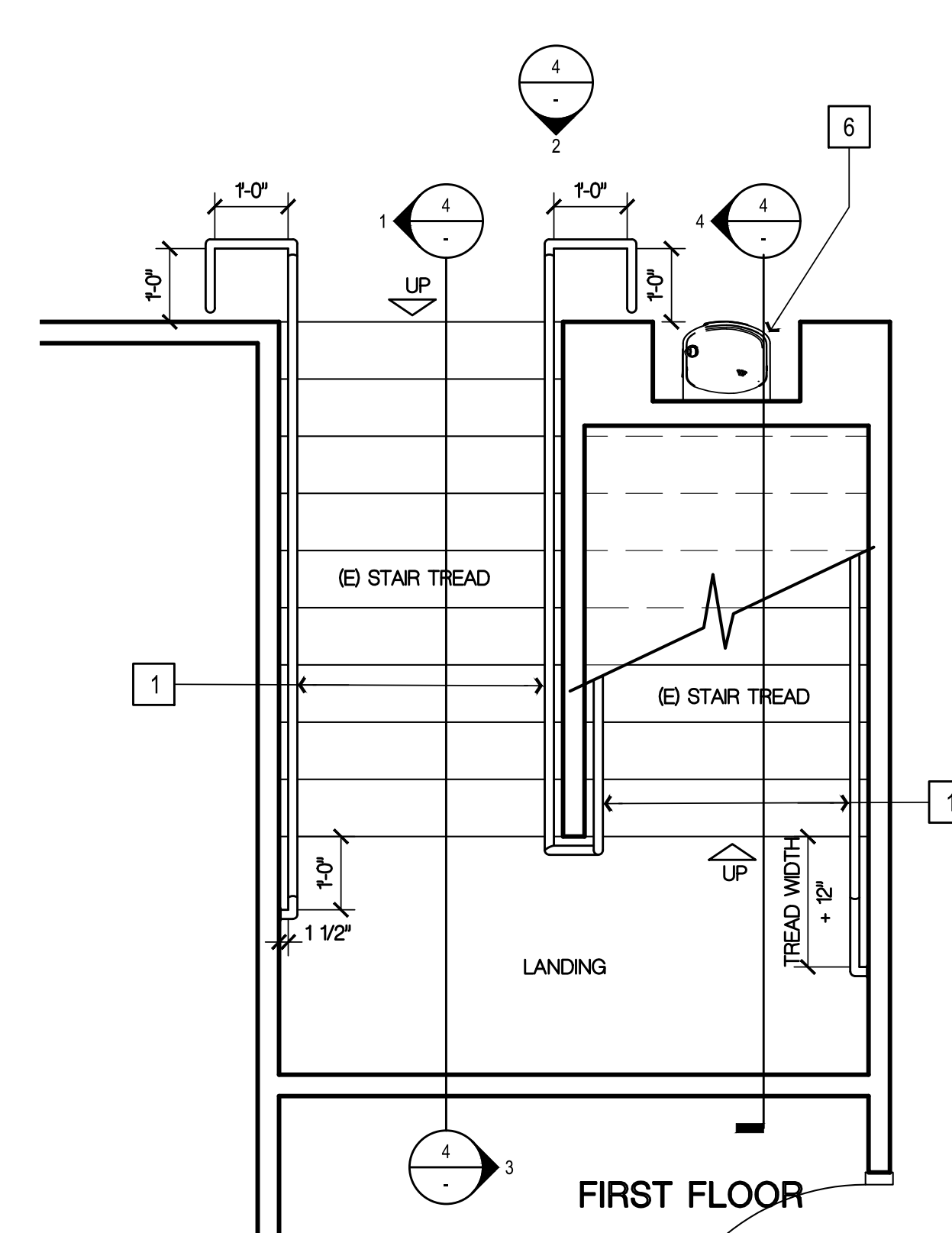
**A224P**



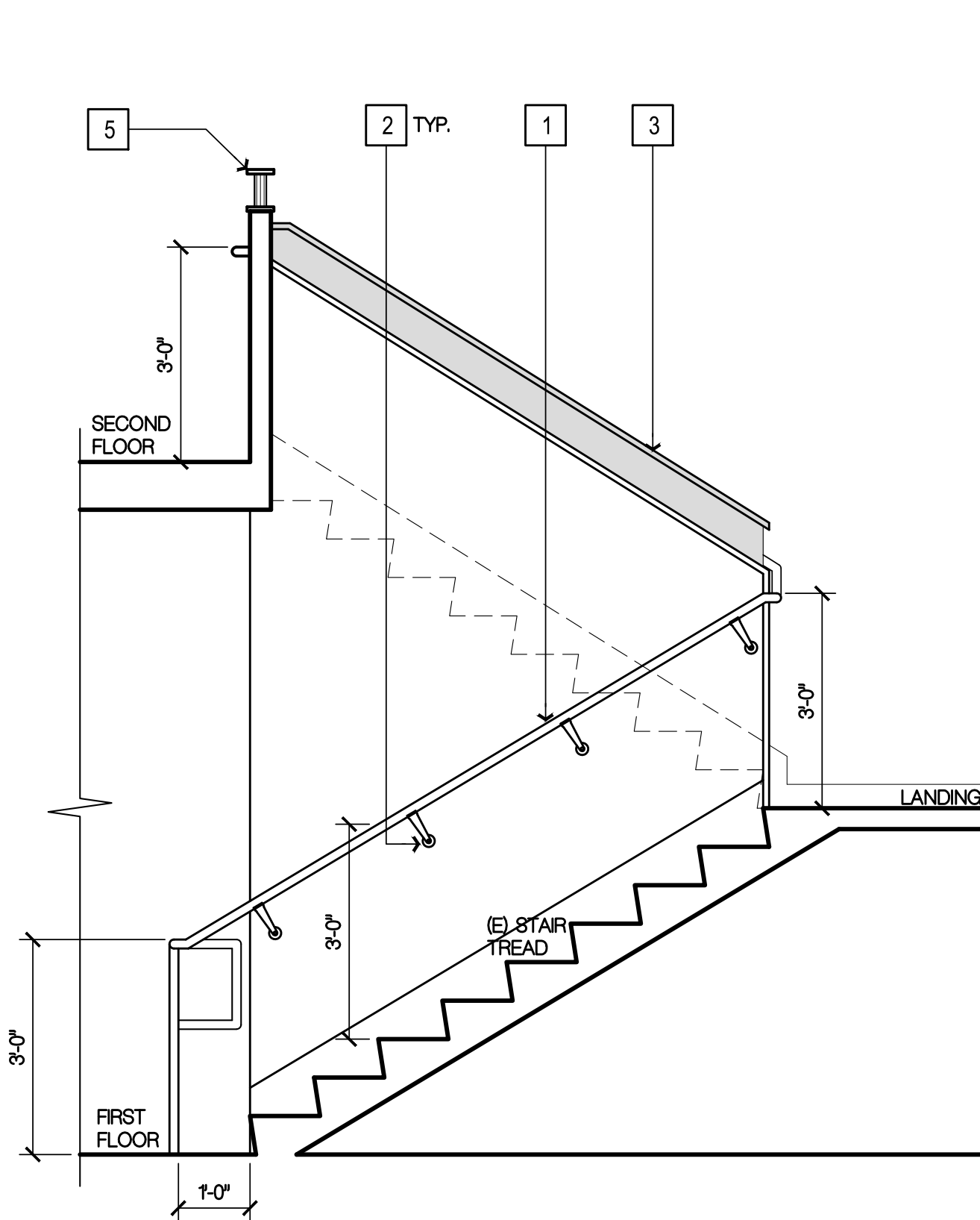
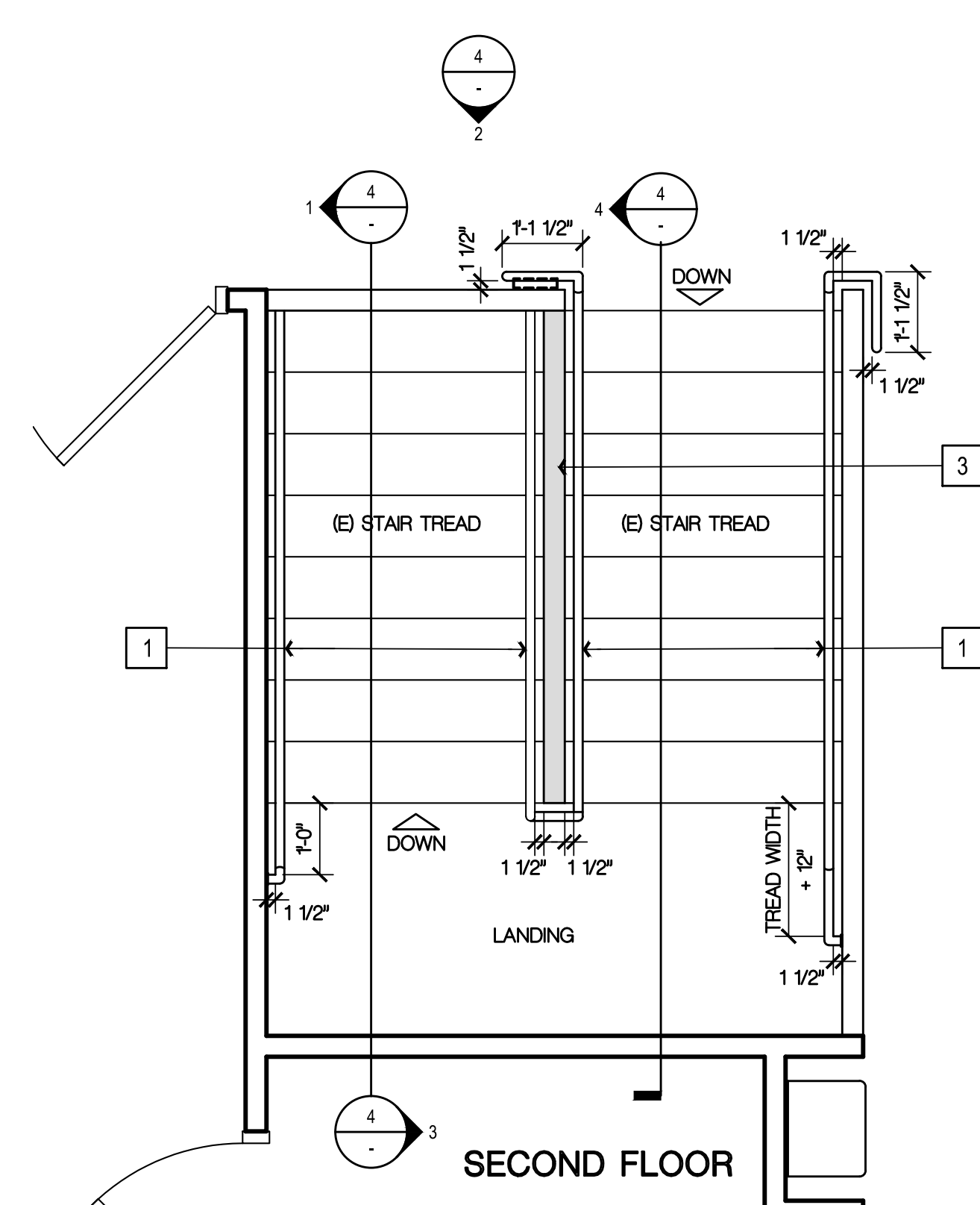
**1 SOUTH SECTION NORTH STAIRS**



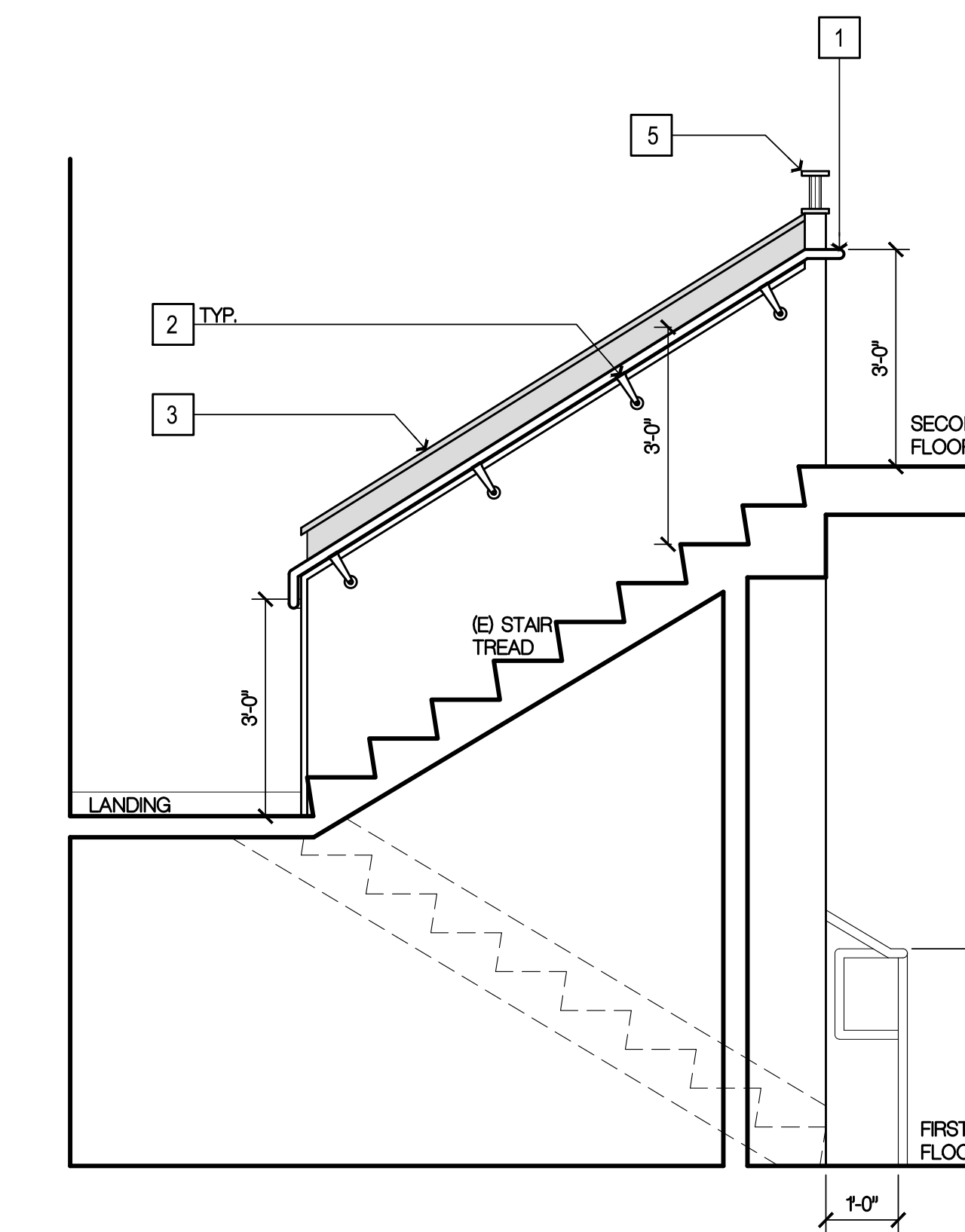
**2 EAST ELEVATION**



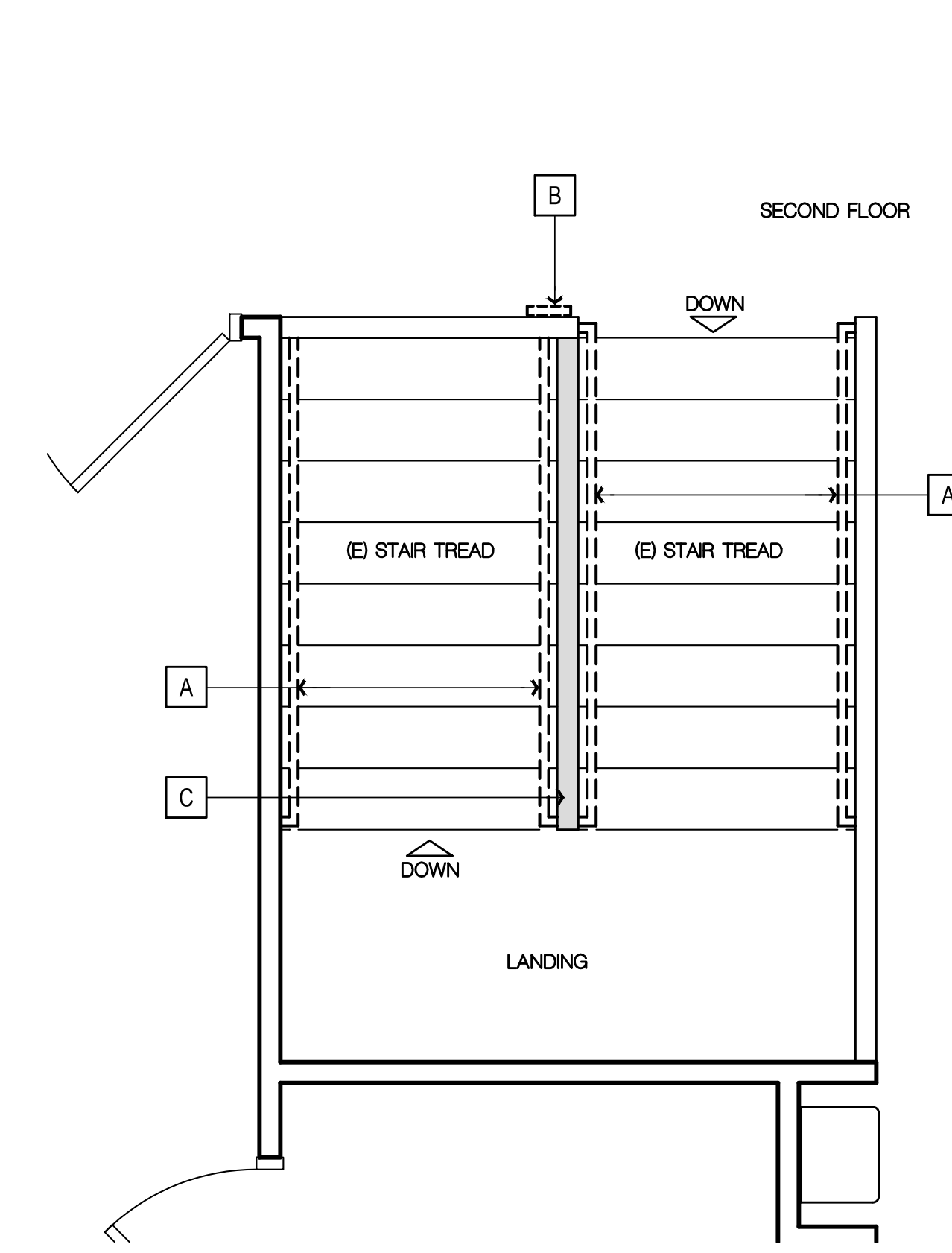
**6A NEW WORK PLANS**  
 NORTH STAIRS SCALE: 1/2" = 1'-0"



**3 NORTH SECTION NORTH STAIRS**



**4 SOUTH SECTION**



**6B DEMOLITION PLAN**  
 NORTH STAIRS SCALE: 1/2" = 1'-0"

NEW WORK SHEET NOTES	
(ALL ITEMS ARE NEW UNLESS NOTED (E) OR EXISTING)	
1	1 1/2" DIA. RAILING (SEE DETAIL 9/A611, 10/A611 AND 11/611)
2	METAL BRACKET.
3	INSTALL WOOD GUARD RAIL TO (E) WALL (SEE DETAIL 9/A611, 10/A611 AND 11/A611)
4	INSTALL LIGHT SWITCH.
5	(E) WOOD GUARD RAIL.
6	(E) DRINKING FOUNTAIN.

DEMOLITION SHEET NOTES	
(ALL ITEMS ARE EXISTING UNLESS NOTED (N) OR NEW)	
A	REMOVE RAILING COMPLETELY. PATCH, REPAIR AND PAINT WALL FOR INSTALLATION OF (N) RAILING.
B	REMOVE LIGHT SWITCH.
C	REMOVE WOOD TRIM COMPLETELY. PATCH, REPAIR AND PAINT WALL FOR (N) WOOD GUARD RAIL.

Log# Name: C:\Users\cd\OneDrive\Documents\Projects\2019\12-04-2019\17-6430\_Humboldt\_County\_ADA\_Compliance\MS\_Probation & Regional Facility\Drawings\CF-PRD-Stairs-A224P.dwg  
 Plot Date: December 04, 2019 - 10:07 am  
 File Name: N:\Projects\2019\17-6430\_Humboldt\_County\_ADA\_Compliance\MS\_Probation & Regional Facility\Drawings\CF-PRD-Stairs-A224P.dwg  
 PLOT: 17-6430 - PRD-Stairs-A224P.dwg









**NICHOLS MELBURG ROSSETTO**  
 ARCHITECTS + ENGINEERS  
 300 KNOLLCREST DRIVE  
 REDDING, CA 96002  
 (530) 222-3300 (530) 222-3538 FAX  
 http://www.nmrdesign.com

**CONSULTANTS**

**LICENSE STAMPS**

**PROJECT NAME**  
**ACCESSIBILITY IMPROVEMENTS FOR HUMBOLDT COUNTY PROBATION CAMPUS**  
 2002 HARRISON AVE  
 EUREKA, CALIFORNIA 95501

**SHEET TITLE**  
**DETAILS**

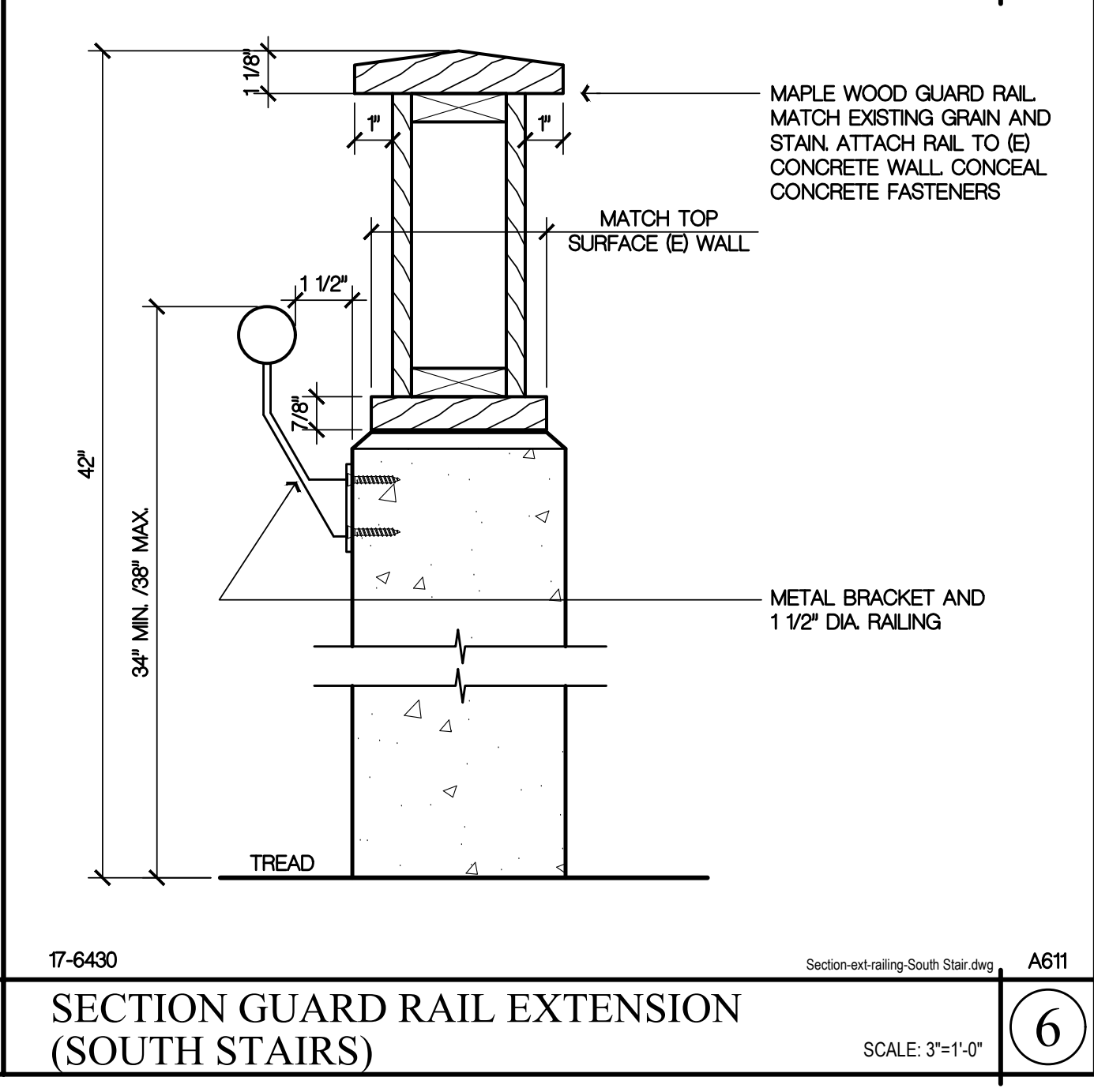
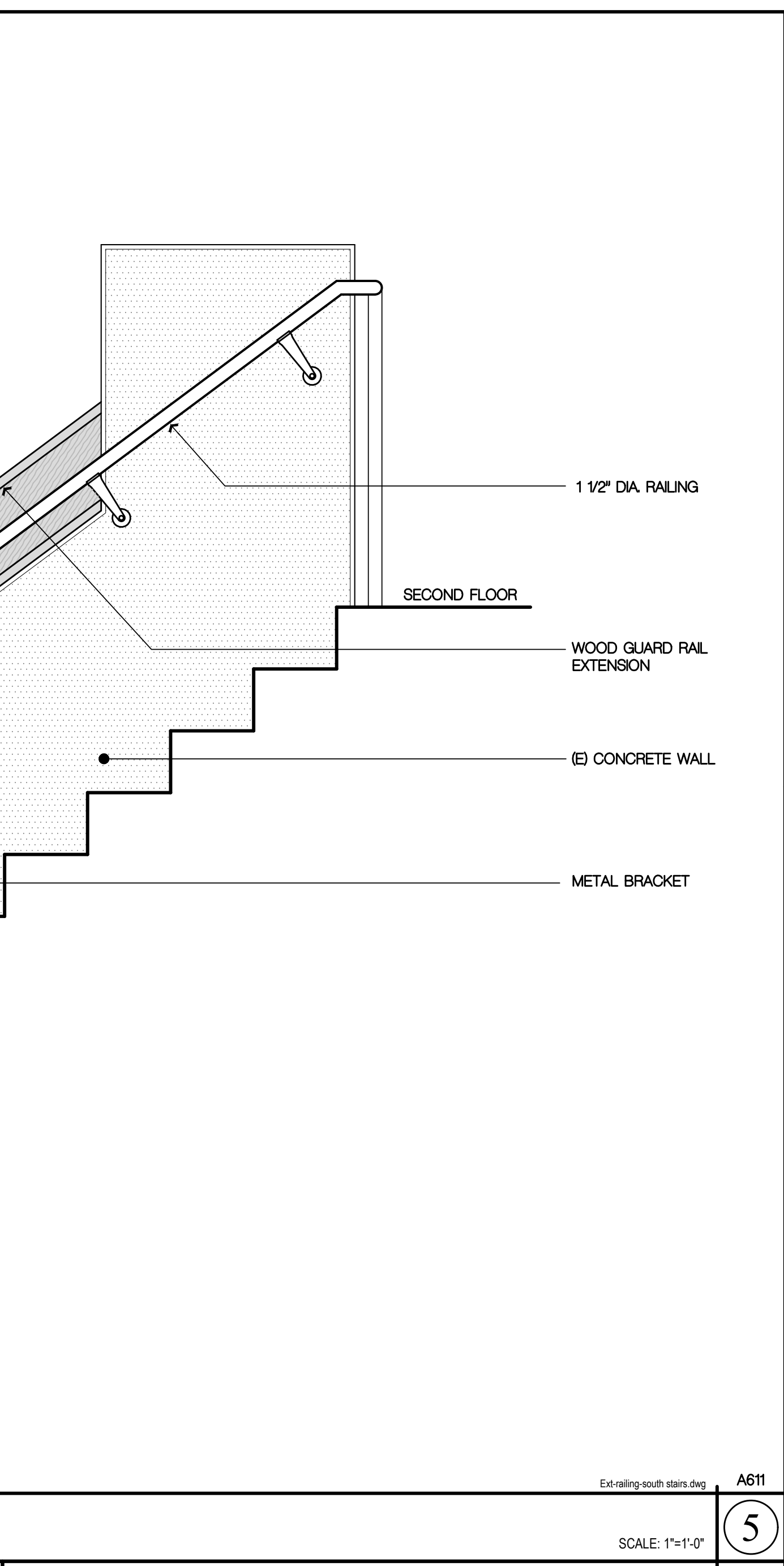
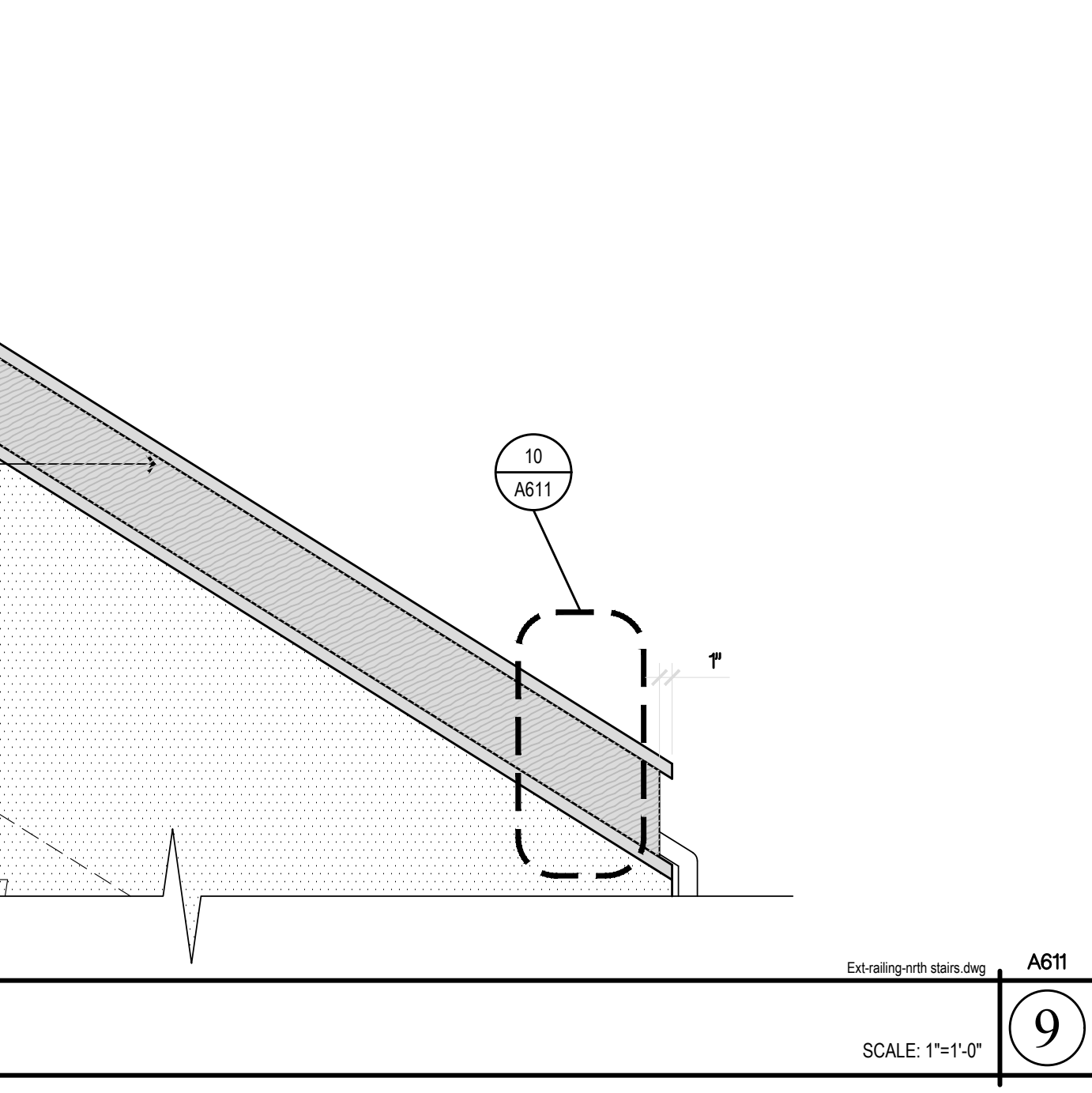
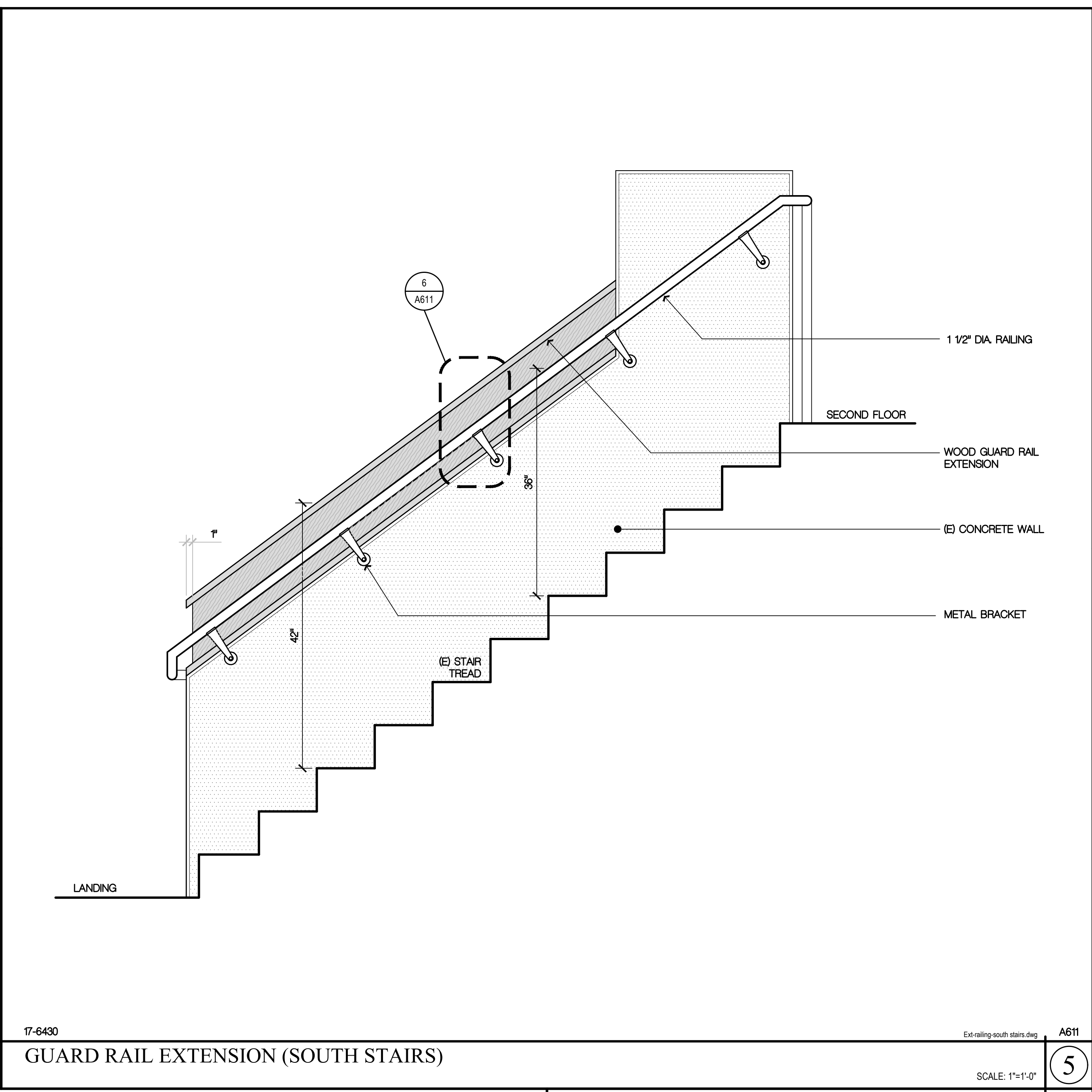
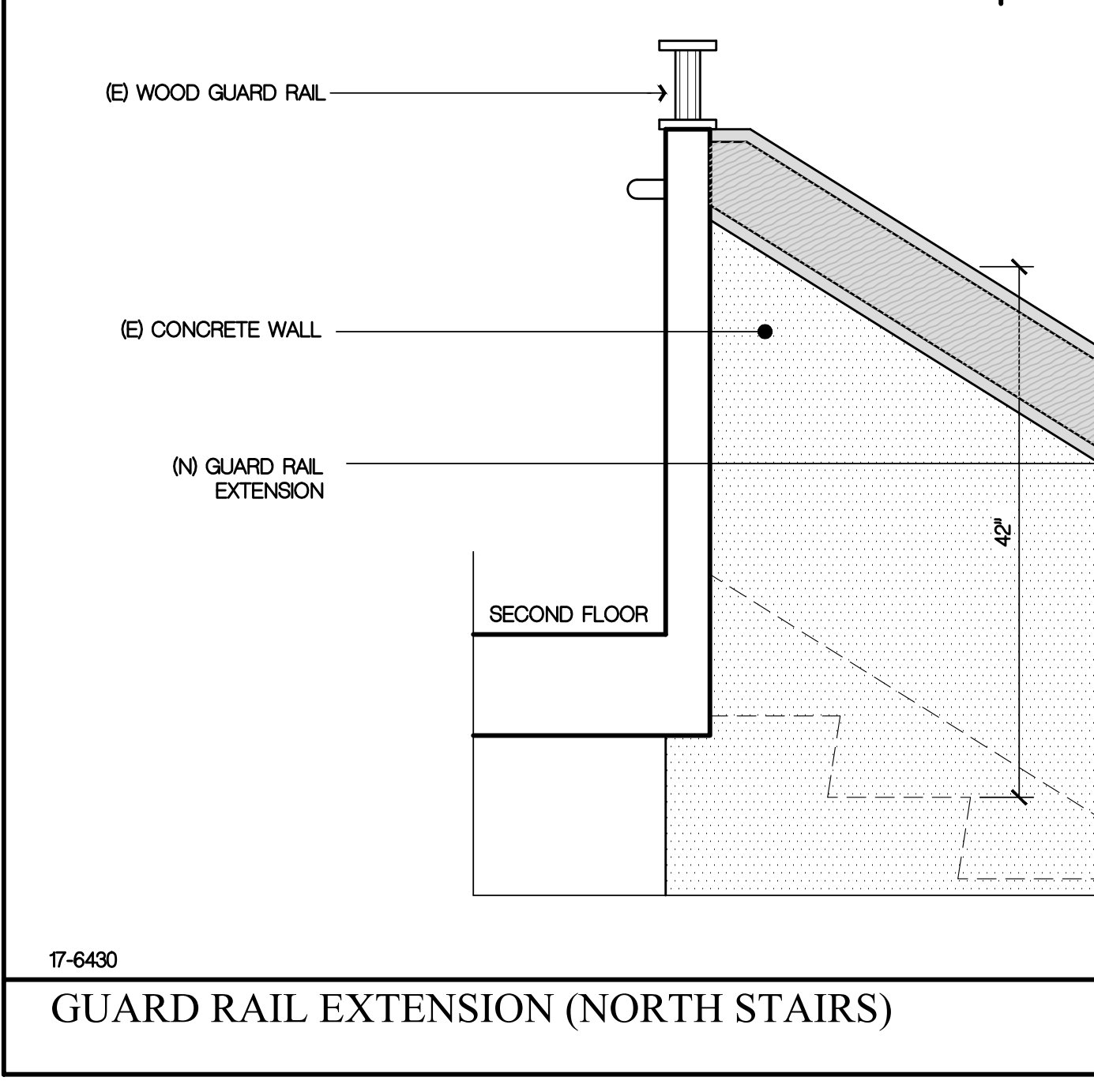
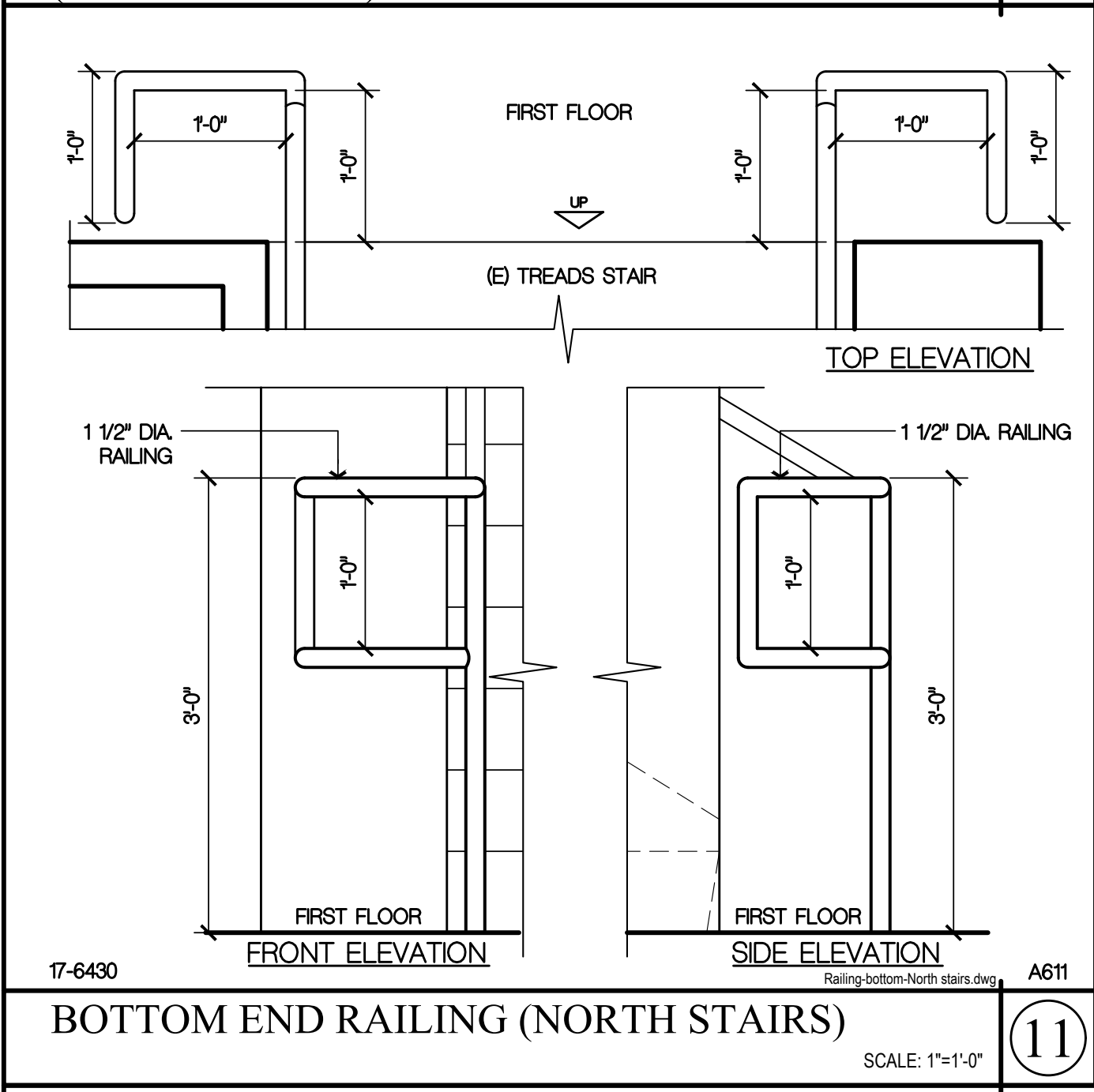
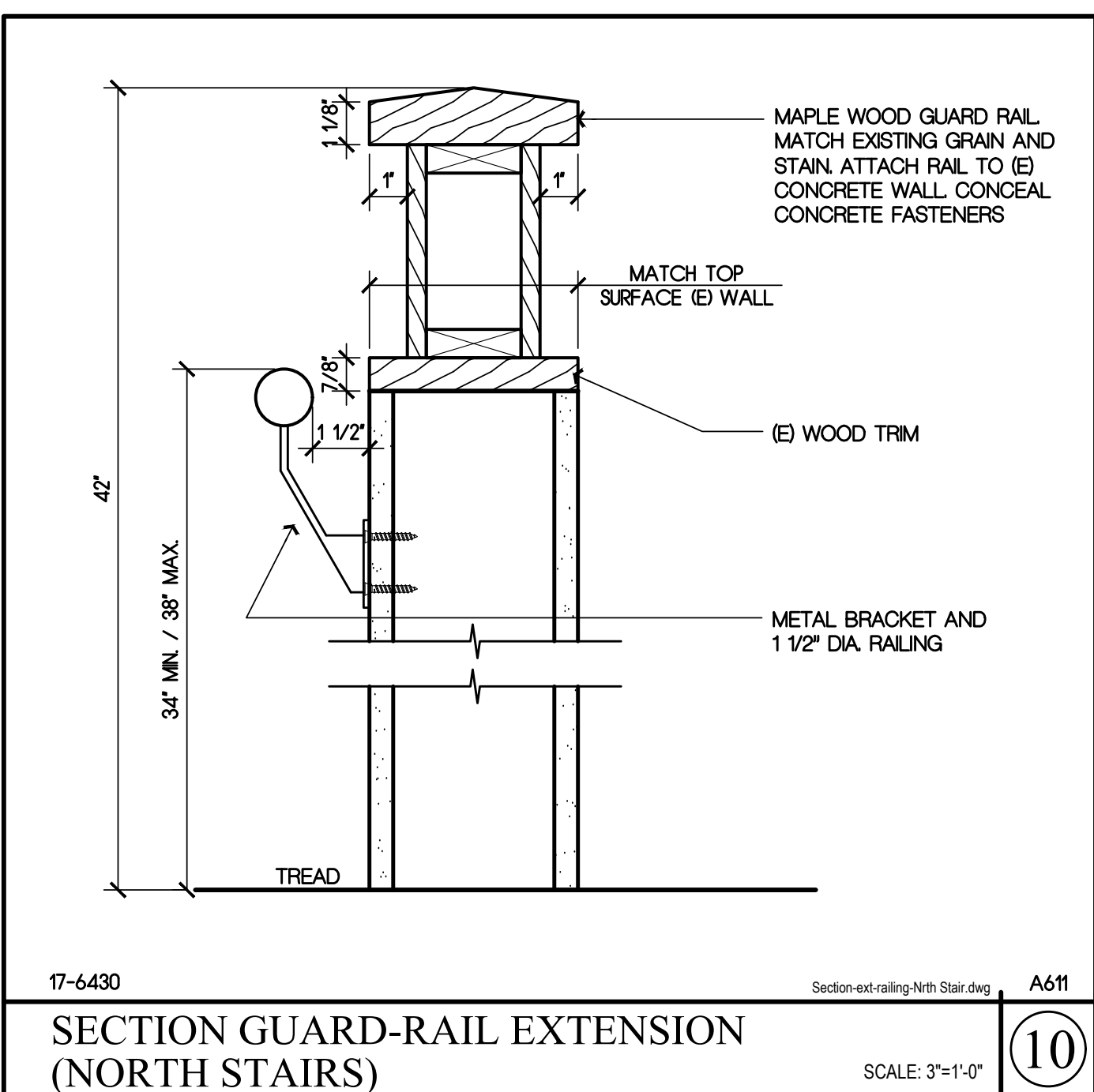
**DRAWING STATUS**  
**CONSTRUCTION DOCUMENTS**

**REVISIONS**

Sym.	Description	By	Date

Drawn By	CD
Checked By	DRC
Date Drawn	12-4-2019
Scale	AS NOTED
Job No.	17-6430

**SHEET No.**



Logon Name: Cristian00  
 Plot Date: December 04, 2019 - 10:08 am  
 File Name: N:\Projects\0000\CD\CD\17-6430 Humboldt County ADA Compliance\05 Probation & Regional Facility Drawings\17-6430-detail-A611.dwg  
 PLOT: VP:17-6430 - Est-railing-north stairs - Bottom-north stairs - Section-railing-north stairs - Section-railing-south stairs - Section-est-railing-south stairs - sec-grab-bar