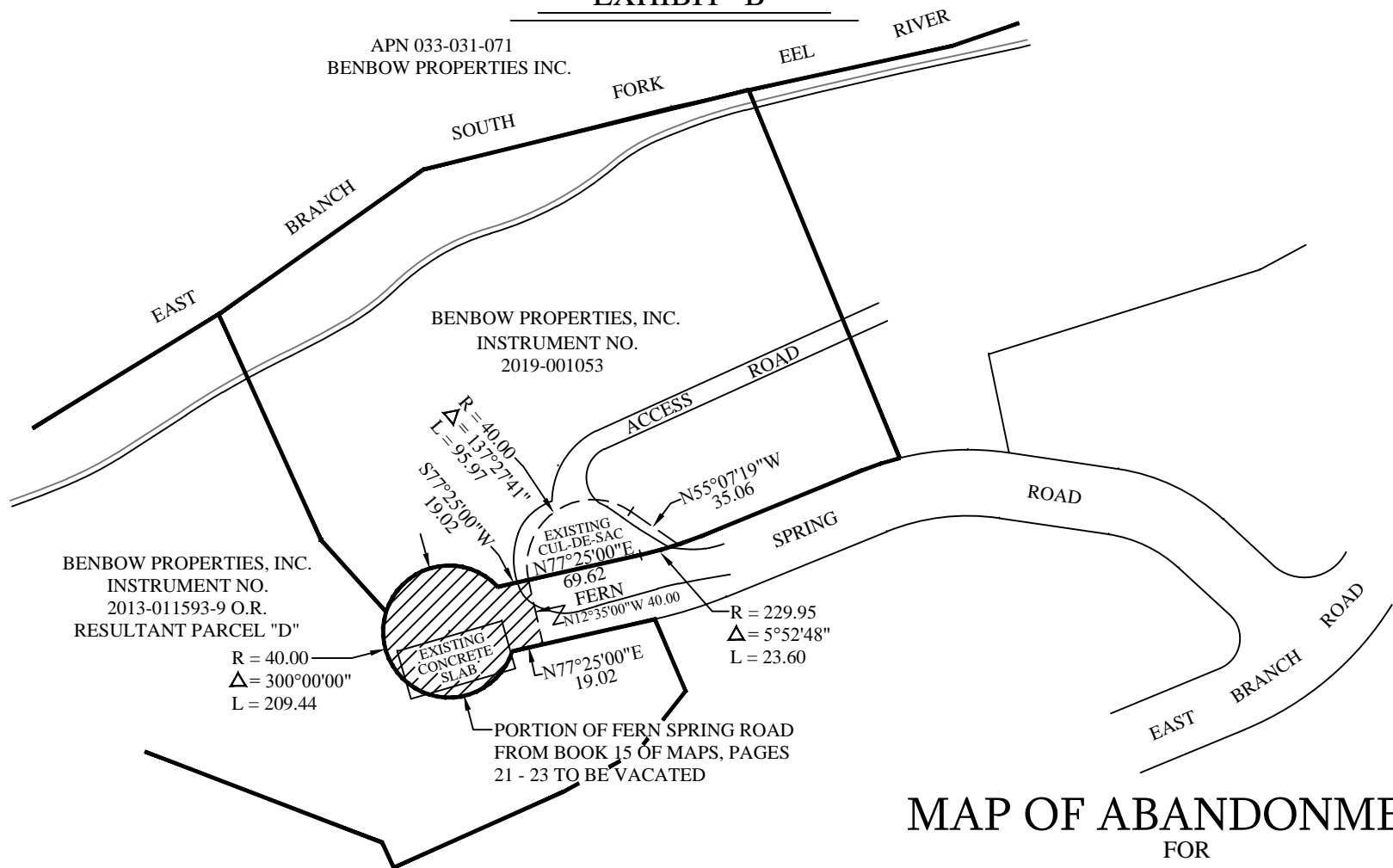


EXHIBIT "B"

APN 033-031-071
BENBOW PROPERTIES INC.



BENBOW PROPERTIES, INC.
INSTRUMENT NO.
2019-001053

BENBOW PROPERTIES, INC.
INSTRUMENT NO.
2013-011593-9 O.R.
RESULTANT PARCEL "D"

R = 40.00
 $\Delta = 300^{\circ}00'00''$
L = 209.44

R = 40.00
 $\Delta = 137^{\circ}27'41''$
L = 95.97

S77°25'00"W
19.02

EXISTING
CUL-DE-SAC
N77°25'00"E
69.62

N77°25'00"E
19.02

N55°07'19"W
35.06

R = 229.95
 $\Delta = 5^{\circ}52'48''$
L = 23.60

PORTION OF FERN SPRING ROAD
FROM BOOK 15 OF MAPS, PAGES
21 - 23 TO BE VACATED

MAP OF ABANDONMENT FOR BENBOW PROPERTIES, INC.

IN
SECTION 31 T4S, R4E, HUMBOLDT MERIDIAN
IN THE UNINCORPORATED AREA OF HUMBOLDT COUNTY
FEBRUARY 2019 SCALE 1" = 100'

HUMBOLDT COUNTY
STATE OF CALIFORNIA
KELLY-O'HERN ASSOCIATES
EUREKA, CALIFORNIA

LAND SURVEYOR:
MICHAEL J. O'HERN LS 4829
KELLY-O'HERN ASSOCIATES
3240 MOORE AVENUE
EUREKA, CA 95501
(707)442-7283

OWNER/APPLICANT:
BENBOW PROPERTIES INC.
ATTN: CHARLES BENBOW
40 EAST BRANCH ROAD
GARBERVILLE, CA 95542
(707)845-7365