

# Pacific Gas and Electric Company

County of Humboldt Board of Supervisors Presentation

Savings Support Programs Safety and Infrastructure Investments

April 9, 2024





# Savings Programs for Income-Qualified Customers

## Helping eligible customers pay their energy bills.



### Relief For Energy Assistance Through Community Help (REACH)

**One-time energy credit for up to \$1,000.**

Must have a past due balance of no more than \$2,000, a disconnection notice and meet qualifying income guidelines.

---



### California Alternate Rates For Energy Program (CARE)

**Provides a monthly discount of 20% or more on gas and electricity.**

Participants qualify through income guidelines or if enrolled in certain public assistance programs.

---



### Family Electric Rate Assistance Program (FERA)

**Provides a monthly discount of 18% on electricity only.**

Must be a household with three or more people that meets qualifying income guidelines.



For REACH, customers can learn more and apply by visiting [pge.com/reach](https://pge.com/reach).

For CARE and FERA, customers can verify if they are eligible and enroll at: [pge.com/care](https://pge.com/care).



# Savings Programs for Income-Qualified Customers

**Helping eligible customers pay their energy bills.**



## **Medical Baseline**

**An additional monthly allotment of energy at the lowest price on your current rate.**

---



## **Low Income Home Energy Assistance Program (LIHEAP)**

**Federally funded one time payment that can help low income households pay for heating and cooling.**

---



## **Energy Savings Assistance Program (ESA)**

**Provides qualified customers no cost energy saving home improvements.**



Visit [PGE.com](https://www.pge.com) and click on **Save Energy and Money** for more information and resources.



## Budget Billing

Offsets high winter heating peak bills by averaging your energy costs to determine a more predictable monthly payment amount.

 [pge.com/budgetbilling](https://pge.com/budgetbilling)



## GoGreen Home Energy Financing

Get help financing energy saving improvements to make your home more comfortable and efficient.

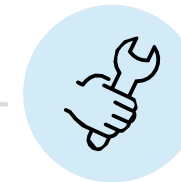
 [gogreenfinancing.com](https://gogreenfinancing.com)



## Home Energy Checkup

Helps customers assess their energy use and gives customized savings tips.

 [pge.com/homecheckup](https://pge.com/homecheckup)



## Energy Efficiency Financing

Eligible businesses can receive an interest-free loan to replace old equipment with more energy efficient models.

 [pge.com/eef](https://pge.com/eef)



## Forecast Alerts

An alert is sent when the amount due on your monthly bill is projected to go over the amount you specify.

 [www.pge.com](http://www.pge.com)



## SmartDay Alerts

On a SmartRate plan, pay a reduced rate in exchange for using less electricity up to 15 days per year.

 [www.pge.com](http://www.pge.com)



## Understand Your Energy Use

Data helps customers assess their energy use and can inform simple adjustments for cost savings.

 [www.pge.com](http://www.pge.com)



## Residential Rate Plans

Find out if your current rate plan is the lowest cost plan for your household.

 [www.pge.com](http://www.pge.com)



WE ARE CURRENTLY IMPLEMENTING

**150+ projects**

companywide to further reduce costs

## Sample Cost Saving Actions

VEGETATION MANAGEMENT

**\$300 million**

in cost savings for 2023

UNDERGROUNDING

**\$68 million**

in cost savings for 2023

ALTERNATIVE TO COMMERCIAL INSURANCE

**\$1.8 billion**

in cost savings over the next four years



Additional information can be found by visiting: [pge.com/grc](https://www.pge.com/grc)

# Improving System Resiliency

In November 2023, the California Public Utilities Commission (CPUC) approved PG&E's 2023-2026 General Rate Case, funding significant system investments:



## Permanent Wildfire Risk Reduction

Undergrounding **1,230** miles of powerlines and hardening **778** miles of overhead lines



## Improved Gas Safety and Reliability

Replacing **163** miles of gas pipelines and conducting additional inspections



## Upgraded Electric Capacity

Supporting new business connections and Electric Vehicle usage