
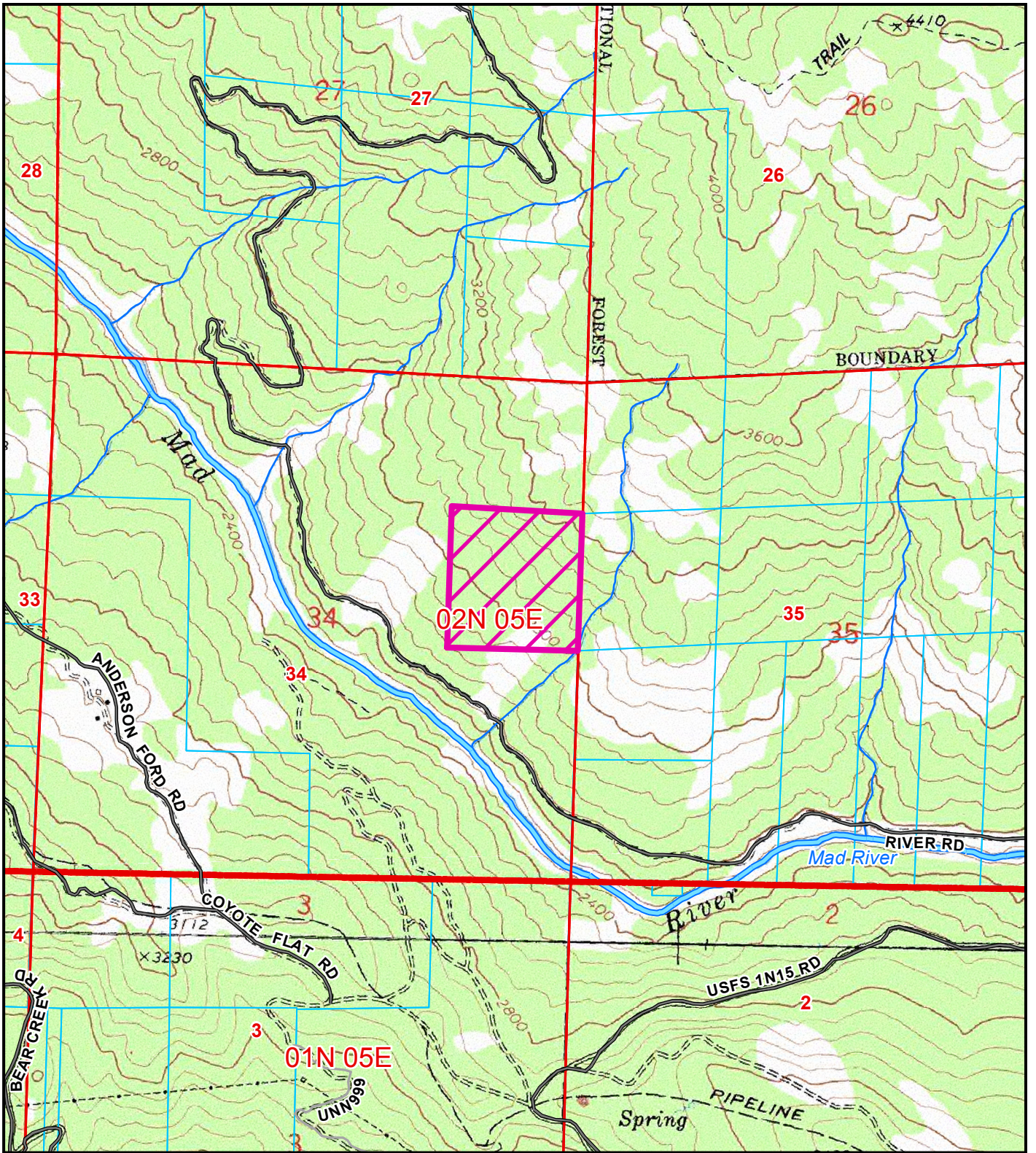


**AERIAL MAP
 PROPOSED MAD RIVER MEDICINALS INC
 DINSMORE AREA
 CUP-16-707
 APN: 208-251-002
 T02N R05E S34 HB&M (BLAKE MOUNTAIN)**

Project Area = 

This map is intended for display purposes and should not be used for precise measurement or navigation. Data has not been completely checked for accuracy.

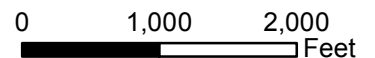


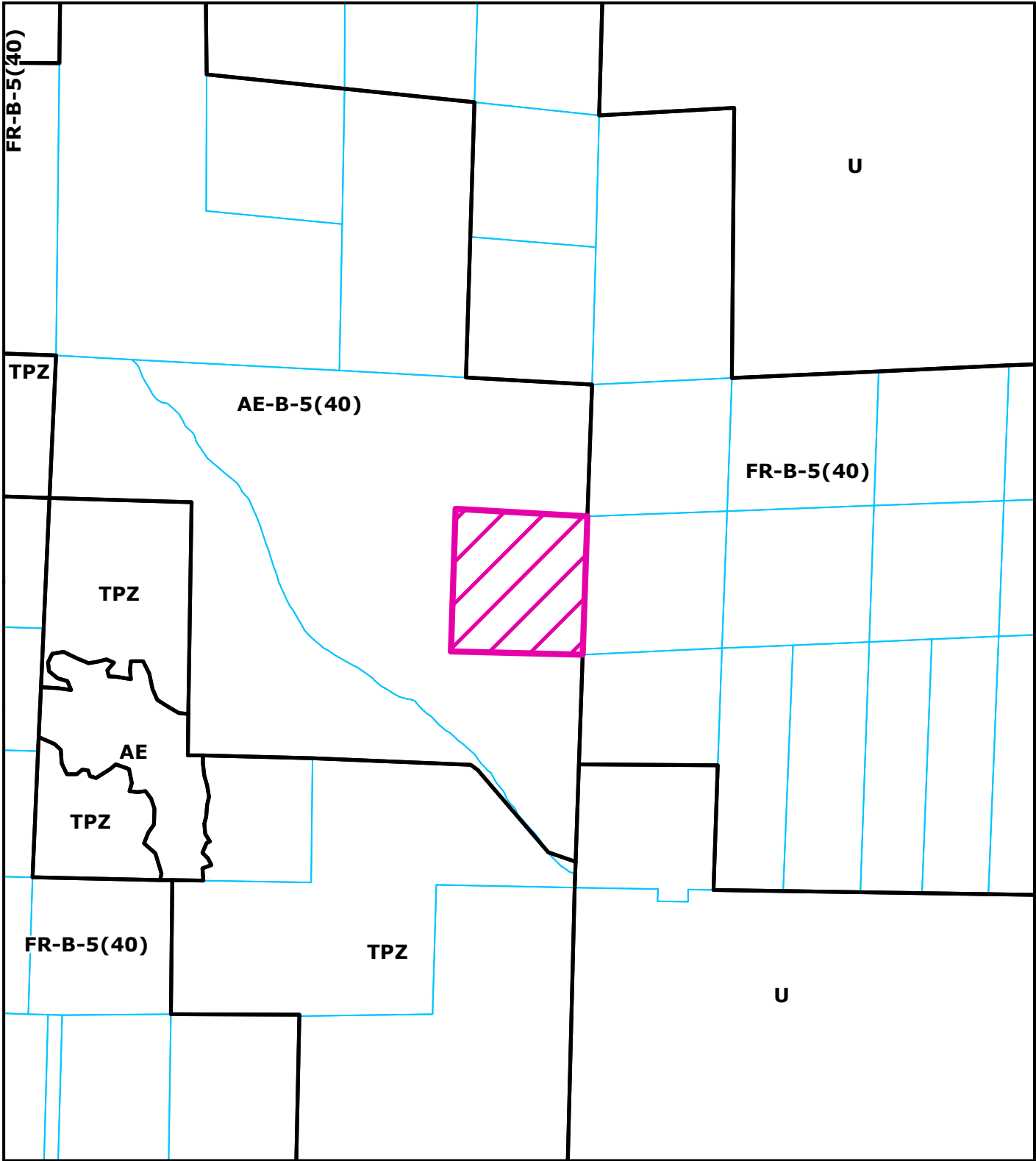
**TOPO MAP
 PROPOSED MAD RIVER MEDICINALS INC
 DINSMORE AREA
 CUP-16-707
 APN: 208-251-002
 T02N R05E S34 HB&M (BLAKE MOUNTAIN)**

Project Area = 






This map is intended for display purposes and should not be used for precise measurement or navigation. Data has not been completely checked for accuracy.





ZONING MAP
PROPOSED MAD RIVER MEDICINALS INC
DINSMORE AREA
CUP-16-707
APN: 208-251-002
T02N R05E S34 HB&M (BLAKE MOUNTAIN)

Project Area = 


 0 1,000 2,000
 Feet

This map is intended for display purposes and should not be used for precise measurement or navigation. Data has not been completely checked for accuracy.