



165 South Fortuna Boulevard, Fortuna, CA 95540  
707-725-1897 • fax 707-725-0972  
trc@timberlandresource.com

April 22, 2019

Humboldt County Planning and Building Department  
3015 H Street  
Eureka, CA 95501

Dear Planner,

Re: APN 212-311-002 / Application #:11929

As required by the Timberland Conversion Evaluation dated November 12, 2018, Timberland Resource Consultants planted approximately 1.05 acres of poorly stocked timberland on February 5, 2019. 500 redwood seedlings were interplanted at a ratio of 3:1 in the areas shown on the maps contained in the Timberland Conversion Evaluation. The redwood seedlings were planted per the specifications stated in the Restocking Plan for APN 212-311-002.

The RPF shall monitor the existing stocking and planted redwood seedlings for 2 years to ensure the area meets the stocking standards of 14CCR 912.7.

Sincerely,



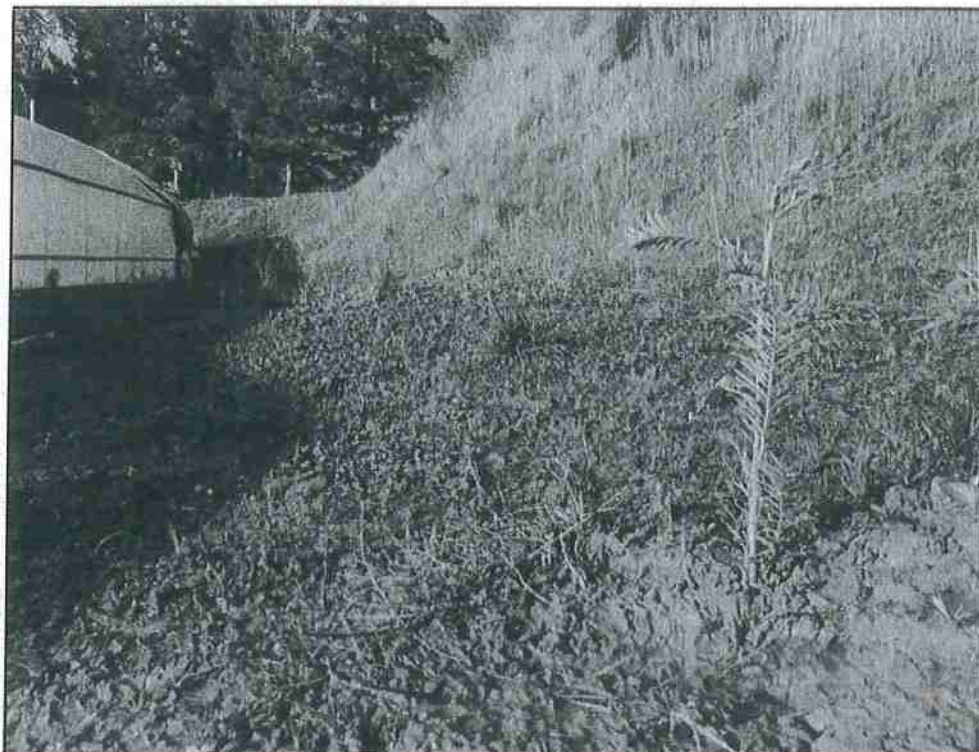
Chris Carroll, RPF #2628  
Timberland Resource Consultants

## Pictures



**Photo 1:** Redwood trees planted on the south side of the grassy opening at a spacing of 10 feet by 10 feet. (Photo looking to the east.)

**Pictures**



**Photo 2:** Planted area on the east side of the grassy opening. (Photo looking to the north.)

## Pictures



**Photos 3 & 4:** Redwood trees planted on the south side of the grassy opening and adjacent hillslope.