

**SUPPLEMENTAL INFORMATION #1**

For Planning Commission Agenda of:  
September 19, 2019

**Item No.: E-5**

Re: Applicant Tihomir Karparov  
Application Number: PLN-11294-CUP  
Assessor Parcel Number 108-015-010

Attached are the following documents:

- September 18, 2019 letter from BLM supporting denial.



**United States Department of the Interior**  
**BUREAU OF LAND MANAGEMENT**

Arcata Field Office  
1695 Heindon Road  
Arcata, CA 95521-4573  
[www.blm.gov/california](http://www.blm.gov/california)



9/18/2019

Planning Commission Clerk  
County of Humboldt County  
Planning and Building Department  
3015 H Street, Eureka, CA 95501

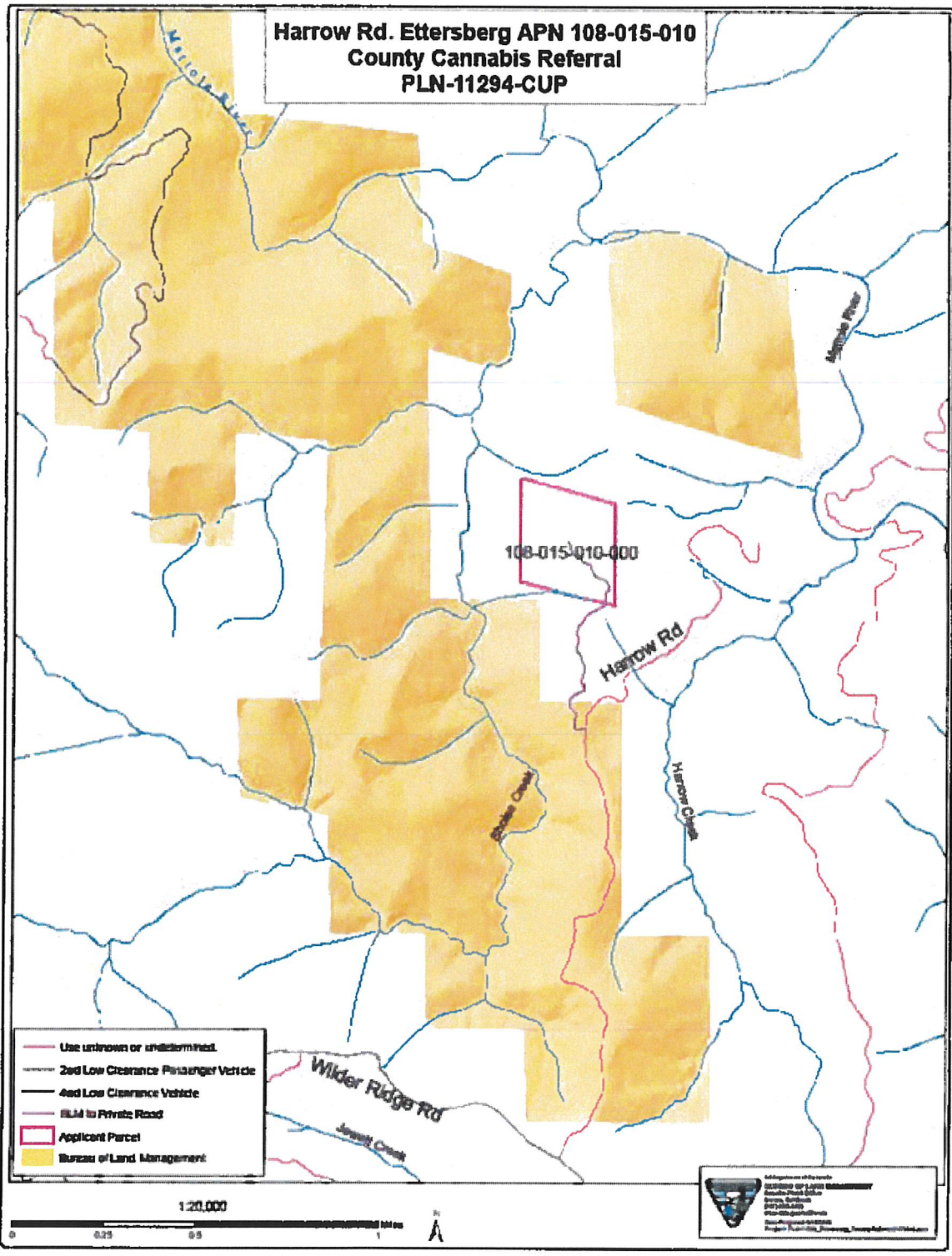
Dear Sir or Madam:

In response to Application APP(S) PLN-11294-CUP APN: 108-015-010-000

The proposed cannabis cultivation site is completely surrounded by BLM lands designated as the King Range National Conservation Area. The BLM determined Sholes Creek is suitable for inclusion into the national Wild and Scenic Rivers System due to the quality of its spawning and rearing habitat for Coho, Chinook salmon and steelhead. For these reasons, BLM lands are managed to conserve and protect these species and their habitats. The Mattole River and its tributaries is listed as sediment impaired under the Clean Water Act. Additionally, the proximity of these areas has the potential to deliver nutrients and other pollutants to the adjacent watercourse.

The adjacent BLM lands are designated as Critical Habitat for Northern Spotted Owl by the U.S. Fish and Wildlife Service (USFWS). There is a potential for light, generator noise, runoff, and rodenticide use from the applicant's operation to impact BLM land and sensitive wildlife species such as the Northern Spotted Owl (NSO).

The NSO continues to suffer population loss across its range due, in part, to habitat loss and human encroachment. The BLM is concerned about the close proximity of this cannabis operation to NSO critical habitat and a historic NSO activity center.

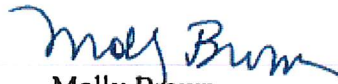


It appears the driveway used for accessing the property from Harrow Road starts on BLM lands. The BLM has no record of legal access or Right of Way (ROW) for the driveway or Harrow Rd.

The applicant should provide documentation of legal access that shows the use is not a trespass upon BLM lands. In addition, the applicant should have their parcel surveyed by a professional land surveyor so that their operations do not trespass upon or cause resource damage to federal lands.

Any activity or resource damage related to cannabis operations on public land such as the cultivation, production, transportation or distribution of supplies or product will violate the Controlled Substances Act and may be subject to federal criminal and/or civil action.

Sincerely,



Molly Brown  
Field Manager

