

FUNDING SOURCE

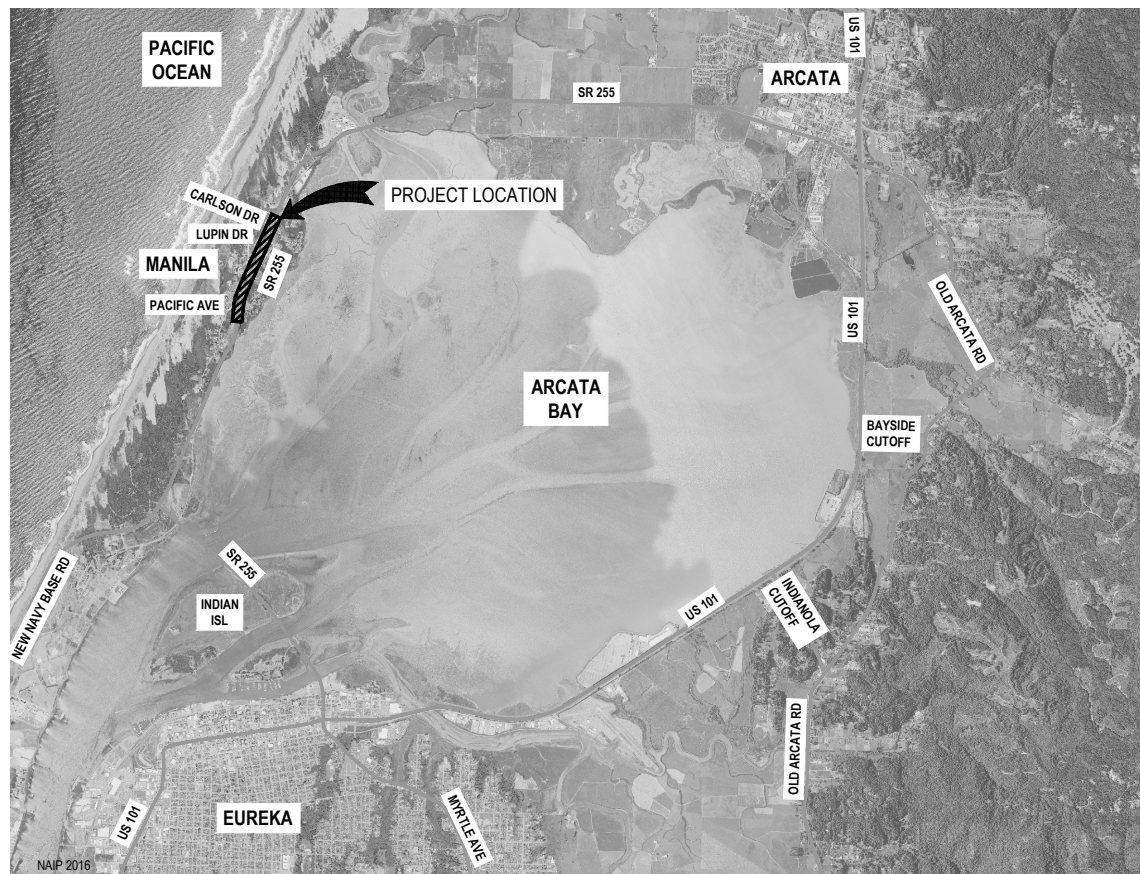
THIS PROJECT IS FUNDED BY THE CALTRANS ACTIVE TRANSPORTATION PROGRAM

NOTES

1. THE CONTRACTOR SHALL HAVE A CLASS "A" LICENSE FOR THIS PROJECT.
2. STANDARD PLAN LIST APPLICABLE TO THIS CONTRACT INCLUDED IN THE SPECIAL PROVISIONS.

ABBREVIATIONS (TO SUPPLEMENT CALTRANS STANDARD PLANS A3A, A3B & A3C)

APN	ASSESSORS PARCEL NUMBER
CAMUTCD	CALIFORNIA MANUAL ON UNIFORM TRAFFIC CONTROL DEVICES (CURRENT EDITION)
CBC	CALIFORNIA BUILDING CODE (CURRENT EDITION)
CL	CENTERLINE
CTSP	2018 CALTRANS STANDARD PLAN
(E)	EXISTING
EW	EACH WAY
FL-ME	FLOWLINE-MATCH EXISTING
LT	LEFT
PVI	POINT OF VERTICAL INTERSECTION
RC	RELATIVE COMPACTION
RT	RIGHT
TC	TOP OF CURB



VICINITY MAP
NOT TO SCALE



SHEET LIST TABLE

SHEET	SHEET TITLE
1	COVER SHEET
2	SHEET KEY - SURVEY CONTROL - LINE CURVE TABLE
3	SUMMARY OF QUANTITIES AND PAY LIMITS
4	TYPICAL SECTIONS
5	TYPICAL SECTIONS
6	PATH PLAN & PROFILE STA 2+77 TO STA 7+65
7	PATH PLAN & PROFILE STA 7+65 TO STA 13+75
8	PATH PLAN & PROFILE STA 13+75 TO STA 18+16
9	SIDEWALK PLAN
10	CONSTRUCTION DETAILS
11	CONSTRUCTION DETAILS
12	CONSTRUCTION DETAILS
13	CONSTRUCTION DETAILS
14	PLANTING MIX TABLES AND PERMIT SCHEDULE
15	WETLAND CREATION AREAS 1-3
16	WETLAND CREATION AREAS 4-7
17	WETLAND CREATION DETAILS
18	LIGHTING PLAN
19	EROSION CONTROL
20	EROSION CONTROL
21	TEMPORARY EROSION CONTROL

RECOMMENDED

Joshua A. Wolf
 JOSHUA A. WOLF
 RCE 70358
 CIVIL ENGINEER
 GHD INC.

10/21/2021
 DATE



APPROVED

HANK SEEMANN
 DEPUTY OF PUBLIC WORKS - ENVIRONMENTAL SERVICES
 COUNTY OF HUMBOLDT

10/21/2021
 DATE

GHD Inc.
 718 Third Street
 Eureka California 95501 USA
 T 1 707 443 8326 F 1 707 444 8330 W www.ghd.com



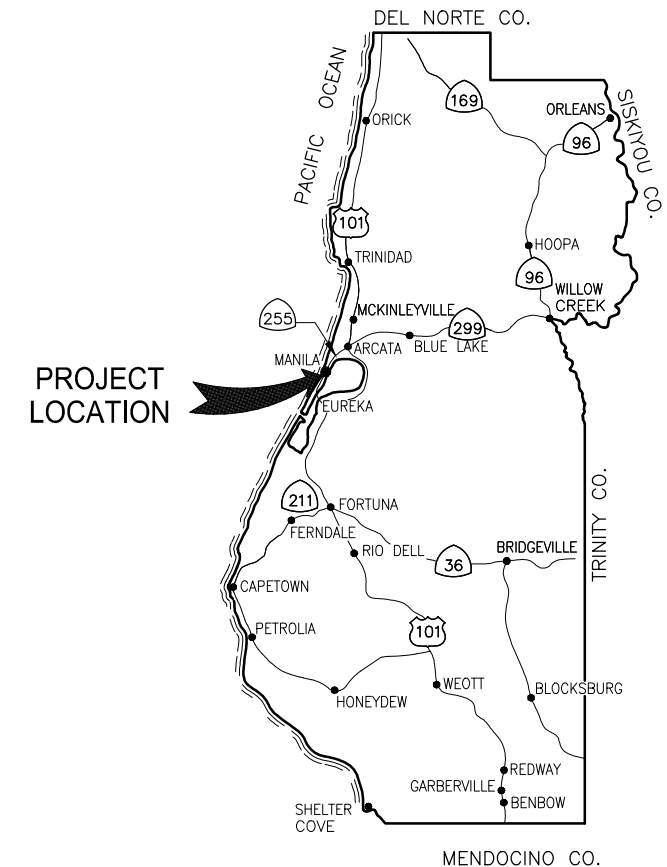
BAR IS ONE INCH ON ORIGINAL DRAWING
 IF NOT ONE INCH ON THIS SHEET, ADJUST SCALES ACCORDINGLY

ROAD NAME: SR 255	DESIGN SECTION: ENVIRONMENTAL
MILE POST: 3.64-3.96	DESIGNED BY: J.WOLF
PROJECT NO.: ATPL-5904(151)	DRAWN BY: O.GOODIE
CONTRACT NO.: 715112	REVIEWED BY: J.SVEHLA
PLOT DATE: 10/21/2021	APPROVED BY: J.WOLF

COUNTY OF HUMBOLDT DEPARTMENT OF PUBLIC WORKS	SHEET 1 OF 21
MANILA HIGHWAY 255 SHARED USE PATH	
COVER SHEET	

COUNTY OF HUMBOLDT
 DEPARTMENT OF PUBLIC WORKS
 PROJECT PLANS FOR CONSTRUCTION OF
 MANILA HIGHWAY SHARED USE PATH
 PROJECT NO. ATPL-5904(151)
 CONTRACT NO. 715112

TO BE SUPPLEMENTED BY STATE OF CALIFORNIA DEPARTMENT OF TRANSPORTATION 2018 STANDARD PLANS, 2018 STANDARD SPECIFICATIONS, AND LATEST REVISED STANDARD PLANS AND SPECIFICATIONS.



LOCATION MAP
 NOT TO SCALE





GHD Inc.
718 Third Street
Eureka California 95501 USA
T 1 707 443 8326 F 1 707 444 8330 W www.ghd.com



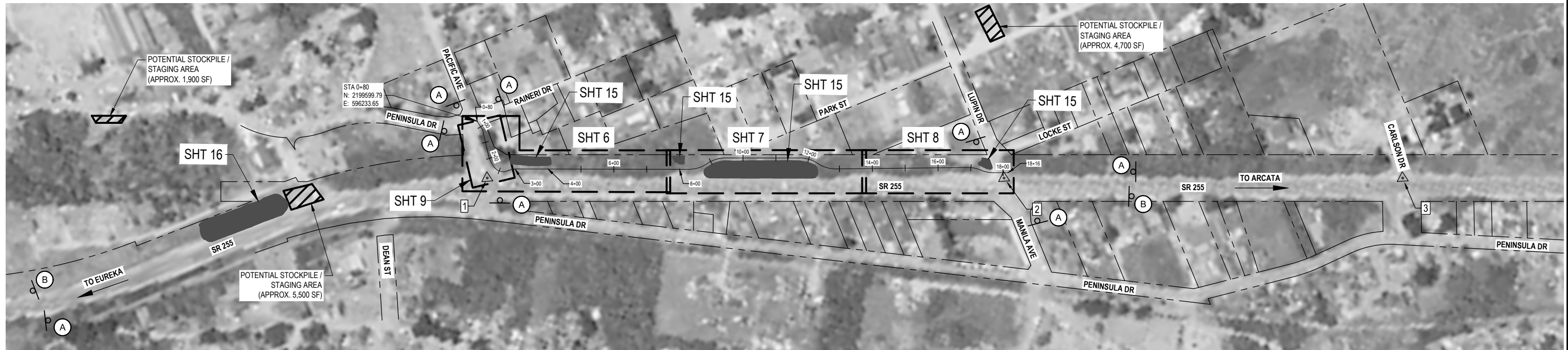
BAR IS ONE INCH ON ORIGINAL DRAWING
IF NOT ONE INCH ON THIS SHEET, ADJUST SCALES ACCORDINGLY

ROAD NAME: SR 255
MILE POST: 3.64-3.96
PROJECT NO.: ATPL-5904(151)
CONTRACT NO.: 715112
PLOT DATE: 10/21/2021

DESIGN SECTION ENVIRONMENTAL
DESIGNED BY: J.WOLF
DRAWN BY: O.GOODIE
REVIEWED BY: J.SVEHLA
APPROVED BY: J.WOLF

COUNTY OF HUMBOLDT
DEPARTMENT OF PUBLIC WORKS
MANILA HIGHWAY 255 SHARED USE PATH
SHEET KEY - SURVEY CONTROL - LINE CURVE TABLE

SHEET 2 OF 21



NOTE: CONSTRUCTION AREA SIGN SPACING NOT SHOWN TO SCALE



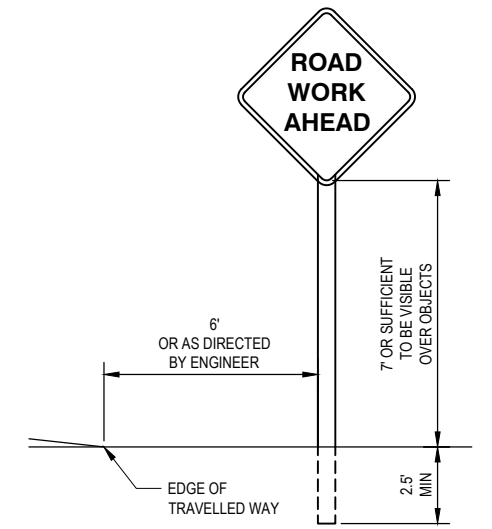
LEGEND

- TRAIL AND SIDEWALK ALIGNMENT
- WETLAND CREATION AREAS
- STAGING/STOCKPILE AREAS

POINT #	NORTHING	EASTING	ELEVATION	DESCRIPTION
1	2199558.67	5962504.11	20.68	CL MONUMENT WELL
2	2200997.87	5963137.12	19.65	2.5" BRASS DISK
3	2202107.85	5963625.37	20.99	CL MONUMENT WELL

TAG	STATION	NORTHING	EASTING	BEARING	LENGTH	RADIUS
L1	BEGIN 0+80.00 END 1+06.91	2199599.97 2199604.08	5962333.65 5962360.24	N81°13'25"E	26.91	
C1	BC 1+06.91 EC 1+14.64	2199604.08 2199603.96	5962360.24 5962367.93	S89°09'00"E	7.729	23.00
L2	BEGIN 1+14.64 END 1+90.36	2199603.96 2199590.19	5962367.93 5962442.39	S79°31'25"E	75.73	
C2	BC 1+90.36 EC 2+33.83	2199590.19 2199592.49	5962442.39 5962485.40	N86°56'25"E	43.470	92.00
C3	BC 2+33.83 EC 2+74.14	2199592.49 2199622.15	5962485.40 5962508.92	N38°24'31"E	40.312	33.00
C4	BC 2+74.14 EC 3+09.81	2199622.15 2199656.63	5962508.92 5962517.28	N13°37'49"E	35.666	100.00
L3	BEGIN 3+09.81 END 8+27.58	2199656.63 2200130.20	5962517.28 5962726.62	N23°50'52"E	517.77	
C5	BC 8+27.58 EC 8+87.43	2200130.20 2200188.76	5962726.62 5962733.50	N06°42'07"E	59.851	100.00
C6	BC 8+87.43 EC 9+47.10	2200188.76 2200247.15	5962733.50 5962740.30	N06°38'58"E	59.668	100.00
L4	BEGIN 9+47.10 END 11+71.76	2200247.15 2200452.79	5962740.30 5962830.76	N23°44'35"E	224.66	

TAG	STATION	NORTHING	EASTING	BEARING	LENGTH	RADIUS
C7	BC 11+71.76 EC 12+30.38	2200452.79 2200496.71	5962830.76 5962868.32	N40°32'11"E	58.620	100.00
C8	BC 12+30.38 EC 12+90.10	2200496.71 2200541.63	5962868.32 5962906.31	N40°13'19"E	59.717	100.00
L5	BEGIN 12+90.10 END 16+89.24	2200541.63 2200908.73	5962906.31 5963063.00	N23°06'51"E	399.14	
C9	BC 16+89.24 EC 17+30.42	2200908.73 2200942.26	5963063.00 5963086.40	N34°54'42"E	41.181	100.00
C10	BC 17+30.42 EC 17+71.31	2200942.26 2200975.52	5963086.40 5963109.69	N34°59'44"E	40.888	100.00
L6	BEGIN 17+71.31 END 18+16.00	2200975.52 2201016.57	5963109.69 5963127.35	N23°16'55"E	44.69	



TYPICAL STATIONARY CONSTRUCTION AREA SIGNS

NOTE: REFER TO STANDARD PLAN RS1 FOR ADDITIONAL INFORMATION

SIGN LABEL	SIGN CODE	PANEL SIZE	SIGN MESSAGE	NUMBER & POST SIZE	NO. OF SIGNS
A	W20-1	36"x36"	ROAD WORK AHEAD	(1) 4"x4"	10
B	G20-2	36"x18"	END ROAD WORK	(1) 4"x4"	2

CONSTRUCTION SIGN NOTES:

- ALL TRAFFIC CONTROL SHALL BE IN ACCORDANCE WITH THE LATEST EDITION OF THE CALIFORNIA MANUAL ON UNIFORM TRAFFIC CONTROL DEVICES (CAMUTCD) AND CALTRANS 2018 STANDARD PLANS.
- SIGN SPACING PER CA MUTCD.
- EXACT SIGN LOCATIONS AND POSITIONS TO BE APPROVED BY THE ENGINEER.
- ALL WARNING SIGNS SHALL HAVE A BLACK LEGEND AND BORDER ON ORANGE BACKGROUND.
- ALTERNATIVE POST CONFIGURATION TO BE APPROVED BY ENGINEER.
- MAINTAIN ALL SIGNS THROUGHOUT DURATION OF CONSTRUCTION.
- PROVIDE SHOULDER CLOSURES IN ACCORDANCE TO CTSP T10, WHERE REQUIRED. LANE OR ROAD CLOSURES ON STATE ROUTE 255 WILL NOT BE ALLOWED UNLESS APPROVED IN ADVANCE BY CALTRANS.
- SHOULDER AND LANE CLOSURES WILL BE ALLOWED ON PACIFIC AVENUE AND LUPIN DRIVE. REFER TO CA MUTCD FIGURE 6H-12 FOR LANE CLOSURE ON TWO-LANE ROADS USING FLAGGERS (TA-10)

UNDERGROUND UTILITY NOTES

- UNDERGROUND UTILITIES ARE SHOWN BASED ON A COMBINATION OF VISIBLE PHYSICAL EVIDENCE AND RECORDS MADE AVAILABLE TO THE SURVEYOR.
- THE SURVEYOR MAKES NO GUARANTEES THAT THE UNDERGROUND UTILITIES SHOWN COMPRISE ALL SUCH UTILITIES IN THE AREA, EITHER IN SERVICE OR ABANDONED. THE SURVEYOR FURTHER DOES NOT WARRANT THAT THE UNDERGROUND UTILITIES ARE IN THE EXACT LOCATIONS INDICATED. THE SURVEYOR HAS NOT PHYSICALLY LOCATED THE UNDERGROUND UTILITIES.
- CALL UNDERGROUND SERVICE ALERT (USA) 1-800-642-2444 A MINIMUM OF TWO BUSINESS DAYS PRIOR TO ANY EXCAVATIONS.

GENERAL NOTES

- CONTRACTOR MUST COMPLY WITH BUSINESS AND PROFESSIONS CODE SECTION 8771 (b) REGARDING REFERENCING, PRESERVING AND RECONSTRUCTING SURVEY MONUMENTS, WHETHER OR NOT SURVEY MONUMENTS ARE SHOWN IN THESE PLANS.
- IF SURVEY MONUMENT IS DAMAGED BY CONTRACTORS OPERATIONS, CONTRACTOR SHALL REPLACE SURVEY MONUMENT AT CONTRACTORS EXPENSE.

STAGING & STOCKPILE NOTES:

- STOCKPILE SHALL HAVE FIBER ROLL, HAY BALES, SILT FENCE, OR OTHER APPROVED LINEAR BARRIER AROUND STOCKPILE.
- STOCKPILE SHALL BE COVERED WITH PLASTIC WHEN NOT IN USE AND BE WEIGHTED DOWN WITH SANDBAGS ON EQUIVALENT (AS PER STANDARD PLAN T53).
- IF STAGING/STOCKPILE AREA IS IN A TURNOUT - THE TURNOUT SHALL BE REESTABLISHED TO PRE-CONSTRUCTION CONDITIONS.
- IF TEMPORARY CULVERTS ARE INSTALLED IN THE DITCH LINE - DITCH LINE SHALL BE RECONSTRUCTED AT END OF PROJECT.
- ALTERNATE STAGING/STOCKPILE SITES SHALL BE PRE-APPROVED THROUGH PUBLIC WORKS WITH WRITTEN APPROVAL.

NOTE: SEE PLAN AND PROFILE SHEETS FOR CORRESPONDING CALL-OUTS FOR THESE LINE AND CURVE TABLES.



GHD Inc.
718 Third Street
Eureka California 95501 USA
T 1 707 443 8326 F 1 707 444 8330 W www.ghd.com



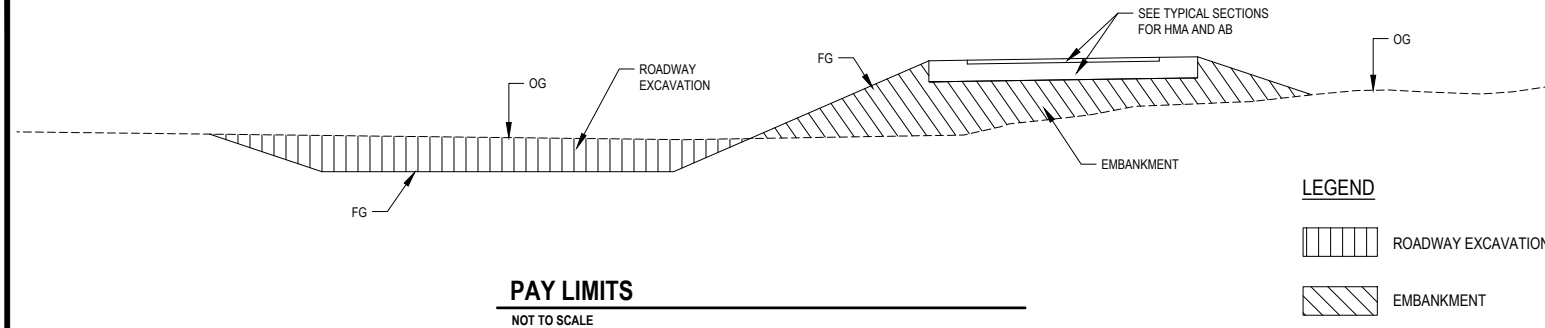
BAR IS ONE INCH ON ORIGINAL DRAWING
IF NOT ONE INCH ON THIS SHEET, ADJUST SCALES ACCORDINGLY

ROAD NAME:	SR 255
MILE POST:	3.64-3.96
PROJECT NO.:	ATPL-5904(151)
CONTRACT NO.:	715112
PLOT DATE:	10/21/2021

DESIGN SECTION	ENVIRONMENTAL
DESIGNED BY:	J.WOLF
DRAWN BY:	O.GOODIE
REVIEWED BY:	J.SVEHLA
APPROVED BY:	J.WOLF

COUNTY OF HUMBOLDT DEPARTMENT OF PUBLIC WORKS
MANILA HIGHWAY 255 SHARED USE PATH
SUMMARY OF QUANTITIES AND PAY LIMITS

SHEET
3
OF
21



PAY LIMITS
NOT TO SCALE

ITEM NO.	ITEM CODE	ITEM DESCRIPTION	UNIT	TOTAL QUANTITY
1	050000	Construction Surveys	LS	1
2	070030	Lead Compliance Plan	LS	1
3	120090	Construction Area Signs	LS	1
4	120100	Traffic Control System	LS	1
5	130100	Job Site Management	LS	1
6	130300	Prepare Storm Water Pollution Prevention Plan	LS	1
7	130310	Rain Event Action Plan	EA	3
8	130320	Storm Water Sampling and Analysis Day	EA	2
9	130330	Storm Water Annual Report	EA	1
10	130540	Temporary Tacked Straw	SQYD	2610
11	130640	Temporary Fiber Roll	LF	72
12	130680	Temporary Silt Fence	LF	2030
13	130900	Temporary Concrete Washout	LS	1
14	170103	Clearing and Grubbing (LS)	LS	1
15	190102	F Roadway Excavation	CY	3700
16	198051	F Embankment	CY	300
17	204008	Plant (Group H)	EA	75
18	204020	Plant (Group P)	EA	1357
19	204035	Plant (Group A)	EA	11
20	210212	Dry Seed (SQFT)	SQFT	23500
21	210270	Rolled Erosion Control Product (Netting)	SQFT	9300
22	210350	Fiber Roll	LF	3210
23	210431	Hydroseed (Trail Embankment)	SQFT	9300
24	260203	Class 2 Aggregate Base (CY)	CY	880
25	390095	Replace Asphalt Concrete Surfacing	CY	16
26	390132	Hot Mix Asphalt (Type A)	TON	410
27	510055	F Structural Concrete, Boardwalk	CY	16
28	510057	F Structural Concrete, Sidewalk Retaining Footing	SQFT	90
29	703235	Sidewalk Underdrain	EA	1
30	723080	Rock Slope Protection (60 lb, Class II, Method B) (CY)	CY	3
31	730011	Minor Concrete (A1-6 Curb) (LF)	LF	150
32	730012	Minor Concrete (6" Warning Curb) (LF)	LF	75
33	730071	F Detectable Warning Surface	SQFT	130
34	731522	Minor Concrete (Sidewalk) (SF)	SQFT	1120
35	731624	Minor Concrete (Curb Ramp) (SF)	SQFT	290
36	750503	Removable Metal Bollard	EA	2
37	760100	Piezometer	EA	6
38	800321	Chain Link Fence (Type CL-4, Vinyl-Clad)	LF	120
39	820590	Relocate Roadside Sign-One Post	EA	3
40	820840	Roadside Sign - One-Post	EA	6
41	820855	Roadside Sign - Two-Post (Interpretative Sign)	EA	1
42	840504	4" Thermoplastic Traffic Stripe	LF	170
43	840505	6" Thermoplastic Traffic Stripe	LF	330
44	840515	Thermoplastic Pavement Marking	SQFT	470
45	846034	Remove Thermoplastic Pavement Markings and Stripes	LS	1
46	870200	Lighting System	LS	1
47	999990	Mobilization	LS	1

QUANTITIES
NOT TO SCALE

SIGN SCHEDULE					
LOCATION (STA)	OFFSET	SIGN CODE	SIGN MESSAGE / DESCRIPTION	PANEL SIZE (L" x H")	POST NUMBER, SIZE & TYPE
2+57.50	6' RT	R1-1	STOP	18" x 18"	(1) 2" x 2" STEEL
3+11	10' RT	R5-3	NO MOTOR VEHICLES	24" x 24"	(1) 2" x 2" STEEL
3+73	10' LT	D11-1	BIKE ROUTE	24" x 18"	(1) 2" x 2" STEEL
		M4-6	END	24" x 12"	
8+66	17' RT	CUSTOM	INTERPRETIVE	36" x 24"	PER DETAIL
16+75	10' RT	D11-1	BIKE ROUTE	24" x 18"	(1) 2" x 2" STEEL
		M4-6	END	24" x 12"	
17+35	10' LT	R5-3	NO MOTOR VEHICLES	24" x 24"	(1) 2" x 2" STEEL
17+67	10' RT	R1-1	STOP	18" x 18"	(1) 2" x 2" STEEL

SIGN RELOCATION SCHEDULE					
RELOCATE FROM (STA)	RELOCATE TO (STA / OFFSET)	SIGN CODE	SIGN MESSAGE / DESCRIPTION	PANEL SIZE (L" x H")	POST NUMBER, SIZE & TYPE
1+17	1+12 / 5' LT		MANILA DUNES COMMUNITY CENTER		(1) 4" x 4" WOOD
1+77	1+77 / 5' LT	R2-1	SPEED LIMIT 25 MPH		(1) 4" x 4" WOOD
17+70	17+76 / 10' LT	R1-1	STOP	36" x 36"	(1) 4" x 4" WOOD



GHD Inc.
718 Third Street
Eureka California 95501 USA
T 1 707 443 8326 F 1 707 444 8330 W www.ghd.com



BAR IS ONE INCH ON ORIGINAL DRAWING

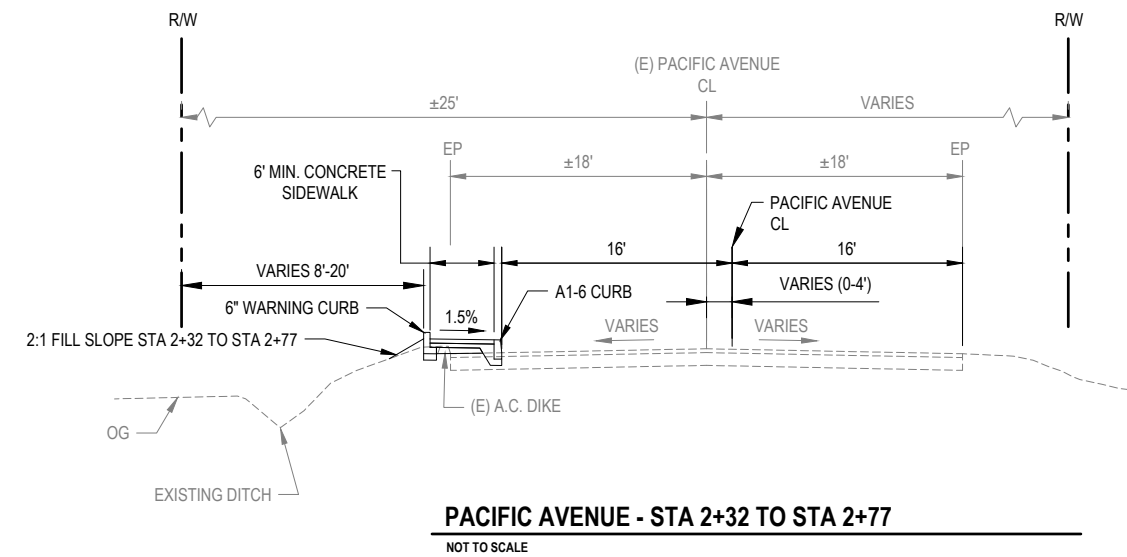
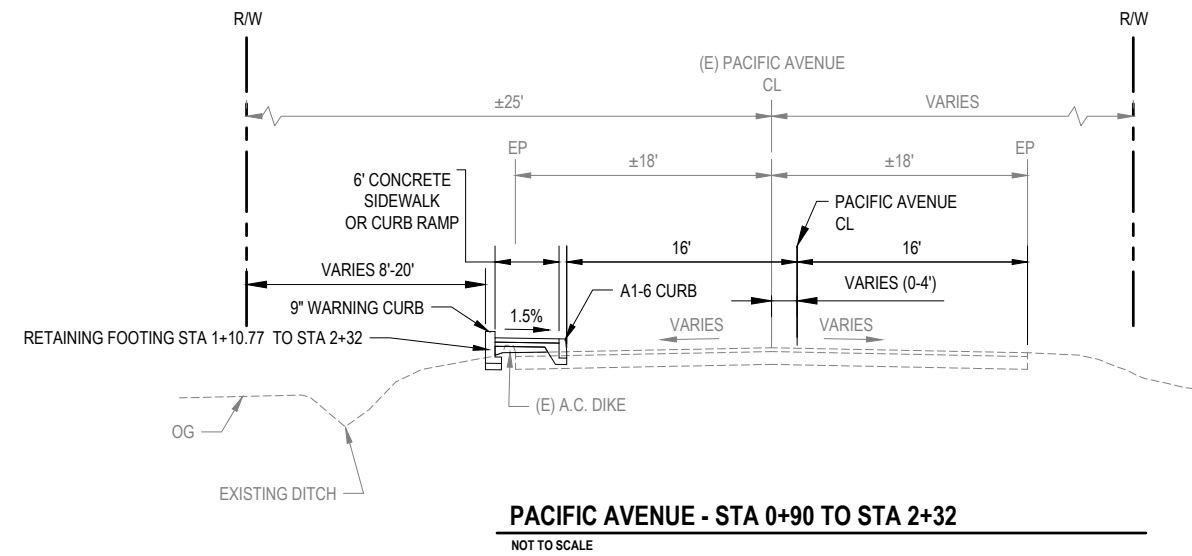
IF NOT ONE INCH ON THIS SHEET, ADJUST SCALES ACCORDINGLY

ROAD NAME:	SR 255
MILE POST:	3.64-3.96
PROJECT NO.:	ATPL-5904(151)
CONTRACT NO.:	715112
PLOT DATE:	10/21/2021

DESIGN SECTION	ENVIRONMENTAL
DESIGNED BY:	J.WOLF
DRAWN BY:	O.GOODIE
REVIEWED BY:	J.SVEHLA
APPROVED BY:	J.WOLF

COUNTY OF HUMBOLDT
DEPARTMENT OF PUBLIC WORKS
MANILA HIGHWAY 255 SHARED USE PATH
TYPICAL SECTIONS

SHEET
4
OF
21





GHD Inc.
718 Third Street
Eureka California 95501 USA
T 1 707 443 8326 F 1 707 444 8330 W www.ghd.com

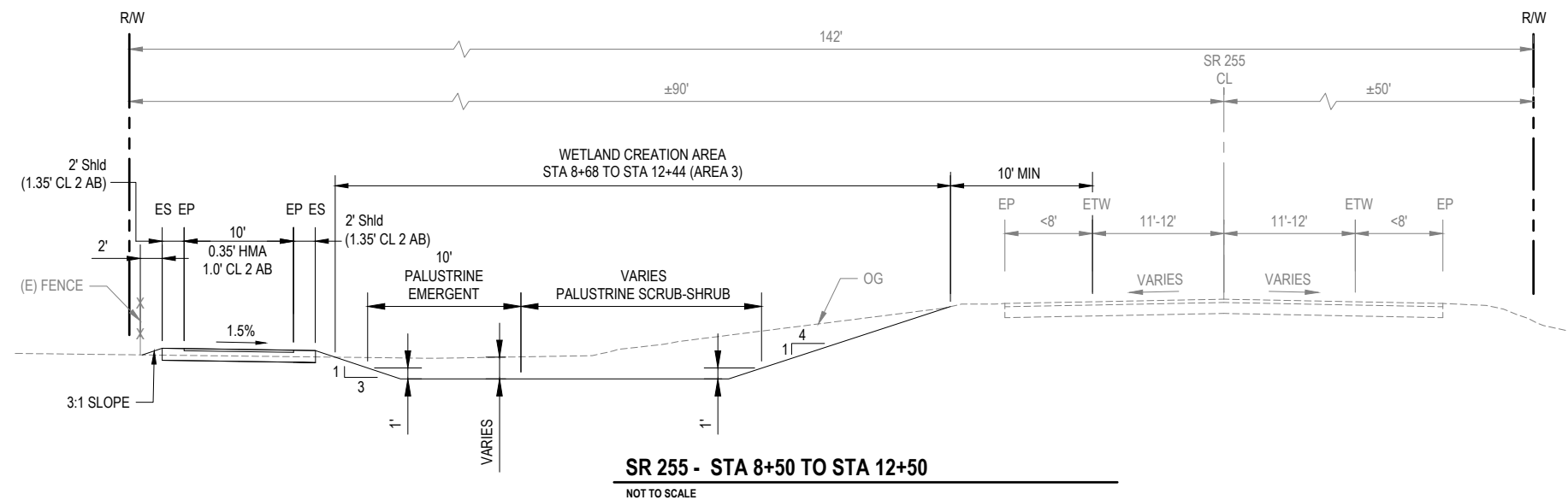
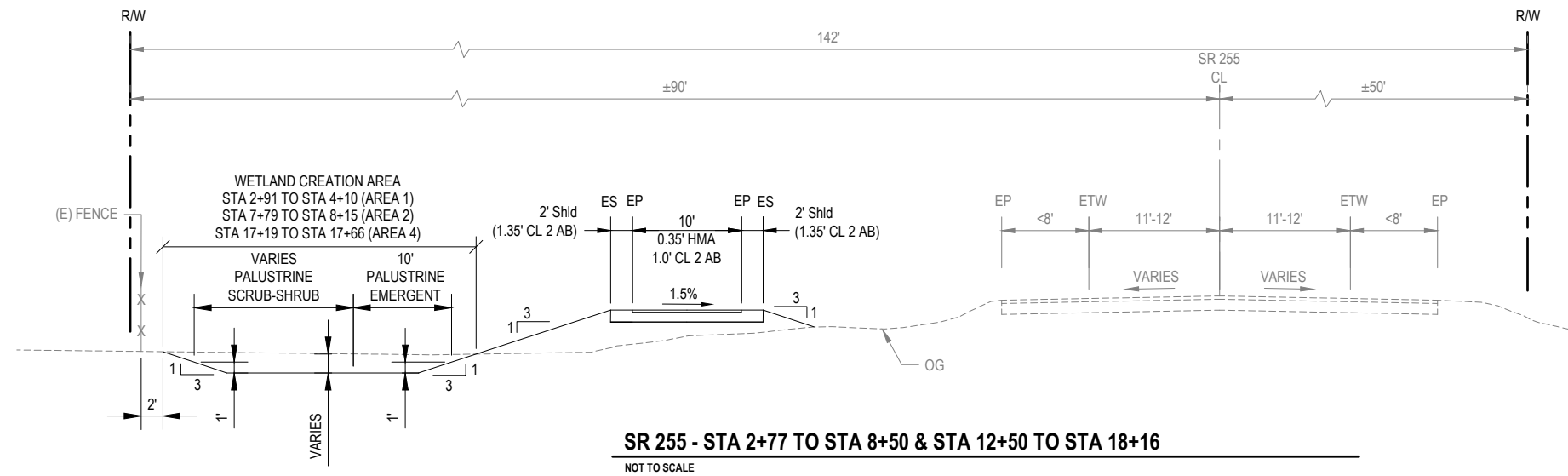


BAR IS ONE INCH ON ORIGINAL DRAWING
IF NOT ONE INCH ON THIS SHEET, ADJUST SCALES ACCORDINGLY

ROAD NAME: SR 255	DESIGN SECTION ENVIRONMENTAL
MILE POST: 3.64-3.96	DESIGNED BY: J.WOLF
PROJECT NO: ATPL-5904(151)	DRAWN BY: O.GOODIE
CONTRACT NO: 715112	REVIEWED BY: J.SVEHLA
PLOT DATE: 10/21/2021	APPROVED BY: J.WOLF

COUNTY OF HUMBOLDT DEPARTMENT OF PUBLIC WORKS
MANILA HIGHWAY 255 SHARED USE PATH
TYPICAL SECTIONS

SHEET 5 OF 21





GHD Inc.
718 Third Street
Eureka California 95501 USA
T 1 707 443 8326 F 1 707 444 8330 W www.ghd.com



BAR IS ONE INCH ON ORIGINAL DRAWING
IF NOT ONE INCH ON THIS SHEET, ADJUST SCALES ACCORDINGLY

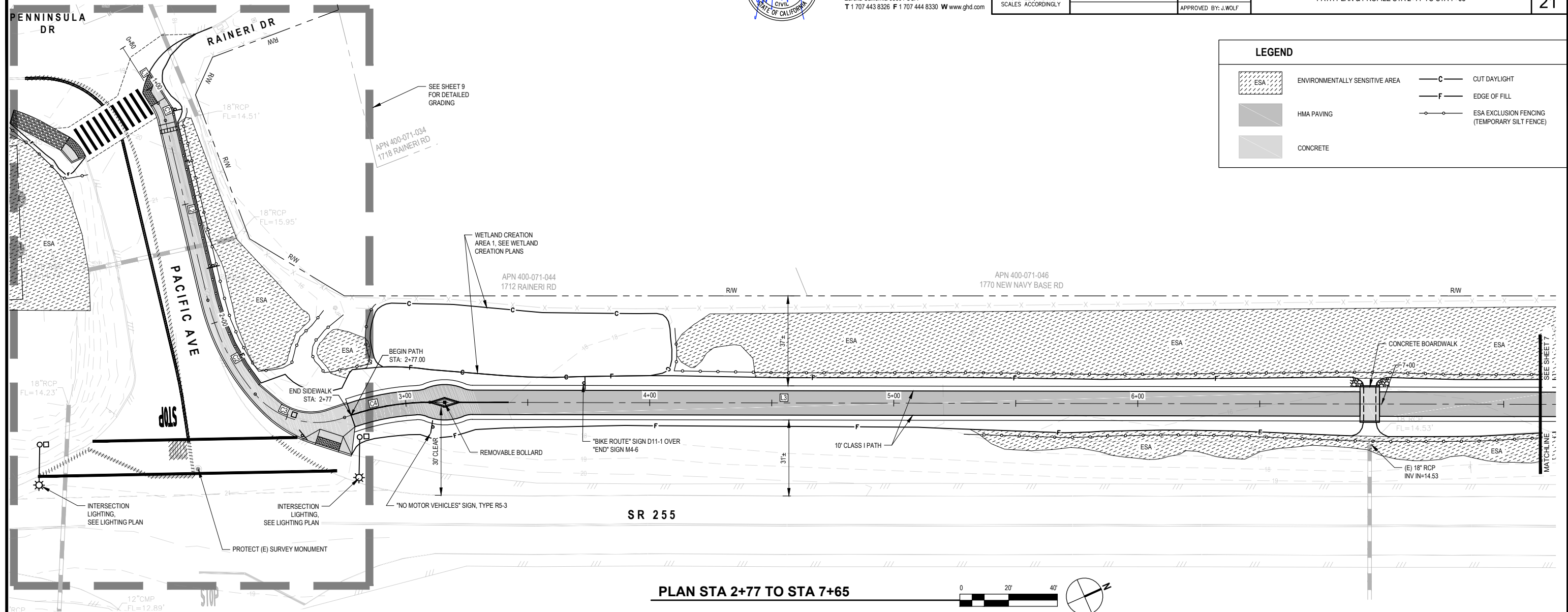
ROAD NAME:	SR 255
MILE POST:	3.64-3.96
PROJECT NO.:	ATPL-5904(151)
CONTRACT NO.:	715112
PLOT DATE:	10/21/2021

DESIGN SECTION	ENVIRONMENTAL
DESIGNED BY:	J.WOLF
DRAWN BY:	O.GOODIE
REVIEWED BY:	J.SVEHLA
APPROVED BY:	J.WOLF

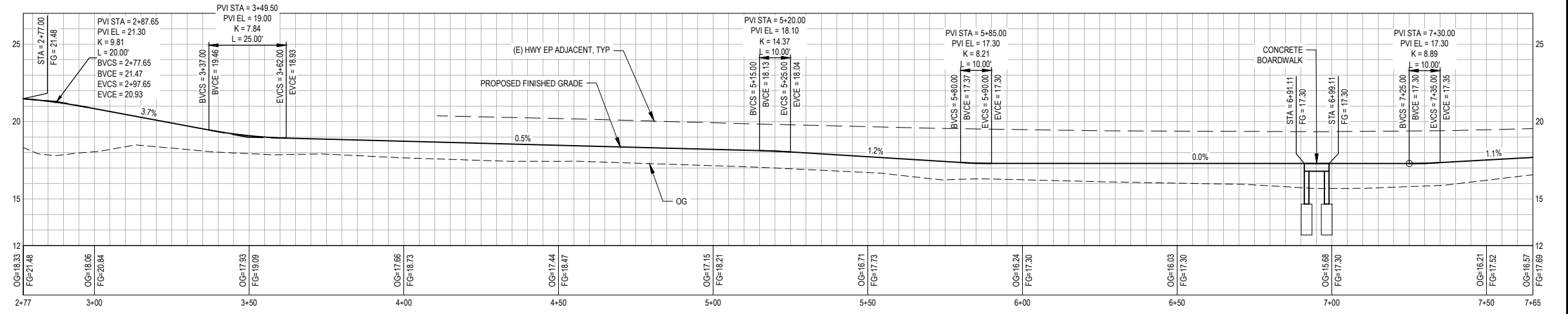
COUNTY OF HUMBOLDT DEPARTMENT OF PUBLIC WORKS
MANILA HIGHWAY 255 SHARED USE PATH
PATH PLAN & PROFILE STA 2+77 TO STA 7+65

SHEET
6
OF
21

LEGEND	
	ENVIRONMENTALLY SENSITIVE AREA
	HMA PAVING
	CONCRETE
	CUT DAYLIGHT
	EDGE OF FILL
	ESA EXCLUSION FENCING (TEMPORARY SILT FENCE)



PLAN STA 2+77 TO STA 7+65



PROFILE STA 2+77 TO STA 7+65



GHD Inc.
718 Third Street
Eureka California 95501 USA
T 1 707 443 8326 F 1 707 444 8330 W www.ghd.com



BAR IS ONE INCH ON ORIGINAL DRAWING
IF NOT ONE INCH ON THIS SHEET, ADJUST SCALES ACCORDINGLY

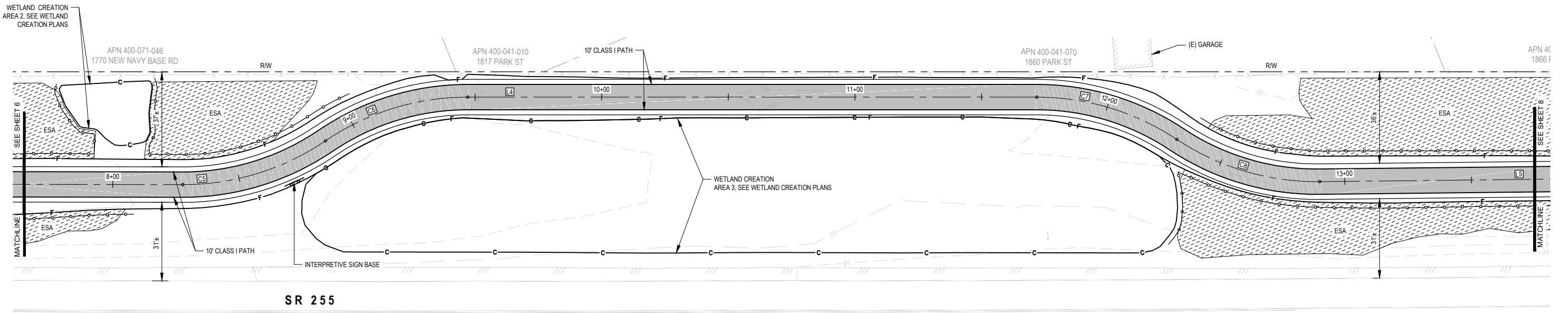
ROAD NAME:	SR 255
MILE POST:	3.64-3.96
PROJECT NO.:	ATPL-5904(151)
CONTRACT NO.:	715112
PLOT DATE:	10/21/2021

DESIGN SECTION	ENVIRONMENTAL
DESIGNED BY:	J.WOLF
DRAWN BY:	O.GOODER
REVIEWED BY:	J.SVEHLA
APPROVED BY:	J.WOLF

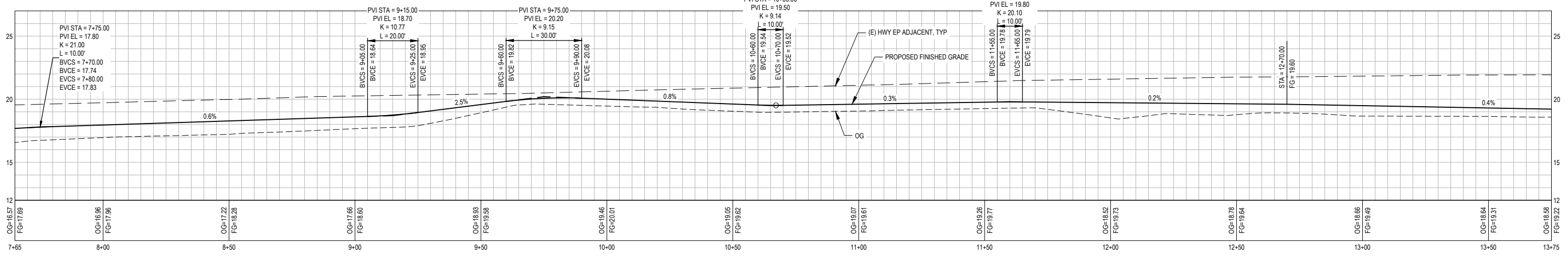
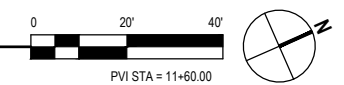
COUNTY OF HUMBOLDT DEPARTMENT OF PUBLIC WORKS
MANILA HIGHWAY 255 SHARED USE PATH
PATH PLAN & PROFILE STA 7+65 TO STA 13+75

SHEET
7
OF
21

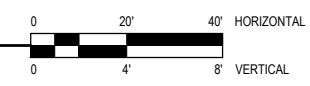
LEGEND	
	ENVIRONMENTALLY SENSITIVE AREA
	HMA PAVING
	CONCRETE
	CUT DAYLIGHT
	EDGE OF FILL
	ESA EXCLUSION FENCING (TEMPORARY SILT FENCE)



PLAN STA 7+65 TO STA 13+75



PROFILE STA 7+65 TO STA 13+75





GHD Inc.
718 Third Street
Eureka California 95501 USA
T 1 707 443 8326 F 1 707 444 8330 W www.ghd.com



BAR IS ONE INCH ON ORIGINAL DRAWING
IF NOT ONE INCH ON THIS SHEET, ADJUST SCALES ACCORDINGLY

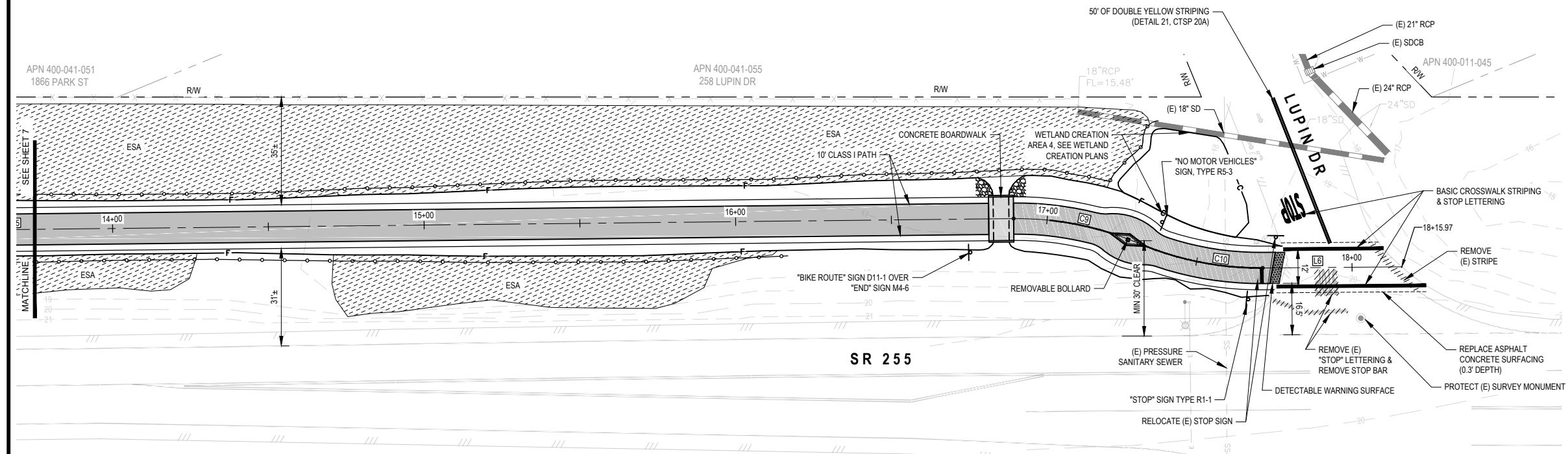
ROAD NAME: SR 255
MILE POST: 3.64-3.96
PROJECT NO.: ATPL-5904(151)
CONTRACT NO.: 715112
PLOT DATE: 10/21/2021

DESIGN SECTION ENVIRONMENTAL
DESIGNED BY: J.WOLF
DRAWN BY: O.GOODIE
REVIEWED BY: J.SVEHLA
APPROVED BY: J.WOLF

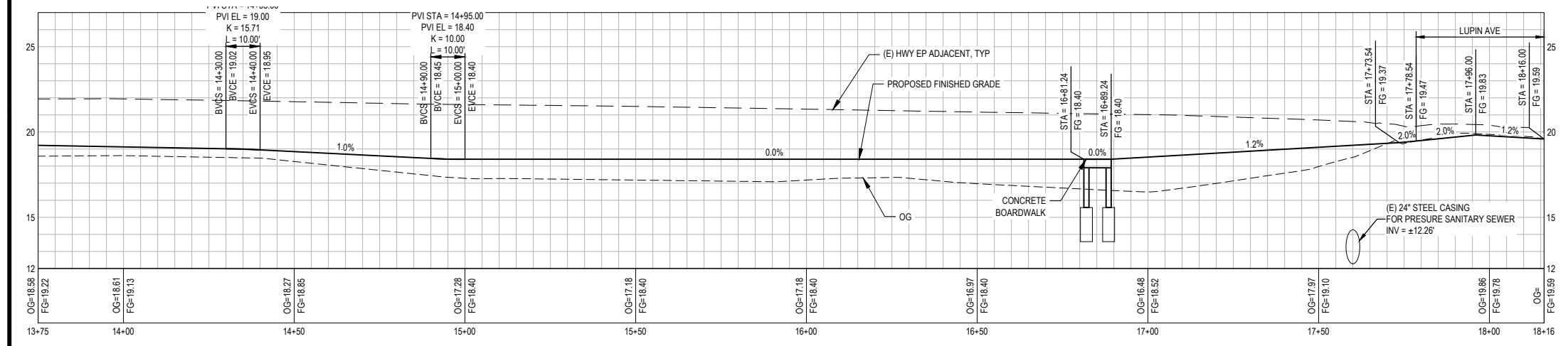
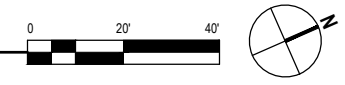
COUNTY OF HUMBOLDT
DEPARTMENT OF PUBLIC WORKS
MANILA HIGHWAY 255 SHARED USE PATH
PATH PLAN & PROFILE STA 13+75 TO STA 18+16

SHEET 8 OF 21

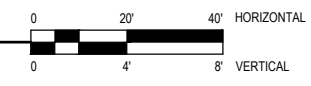
LEGEND	
	ENVIRONMENTALLY SENSITIVE AREA
	HMA PAVING
	CONCRETE
	CUT DAYLIGHT
	EDGE OF FILL
	ESA EXCLUSION FENCING (TEMPORARY SILT FENCE)



PLAN STA 13+75 TO STA 18+16



PROFILE STA 13+75 TO STA 18+16





GHD Inc.
718 Third Street
Eureka California 95501 USA
T 1 707 443 8326 F 1 707 444 8330 W www.ghd.com



BAR IS ONE INCH ON ORIGINAL DRAWING
IF NOT ONE INCH ON THIS SHEET, ADJUST SCALES ACCORDINGLY

ROAD NAME: SR 255
MILE POST: 3.64-3.96
PROJECT NO.: ATPL-5904(151)
CONTRACT NO.: 715112
PLOT DATE: 10/21/2021

DESIGN SECTION ENVIRONMENTAL
DESIGNED BY: J.WOLF
DRAWN BY: O.GOODIE
REVIEWED BY: C.PENNY
APPROVED BY: J.WOLF

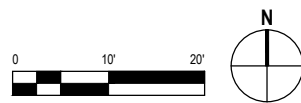
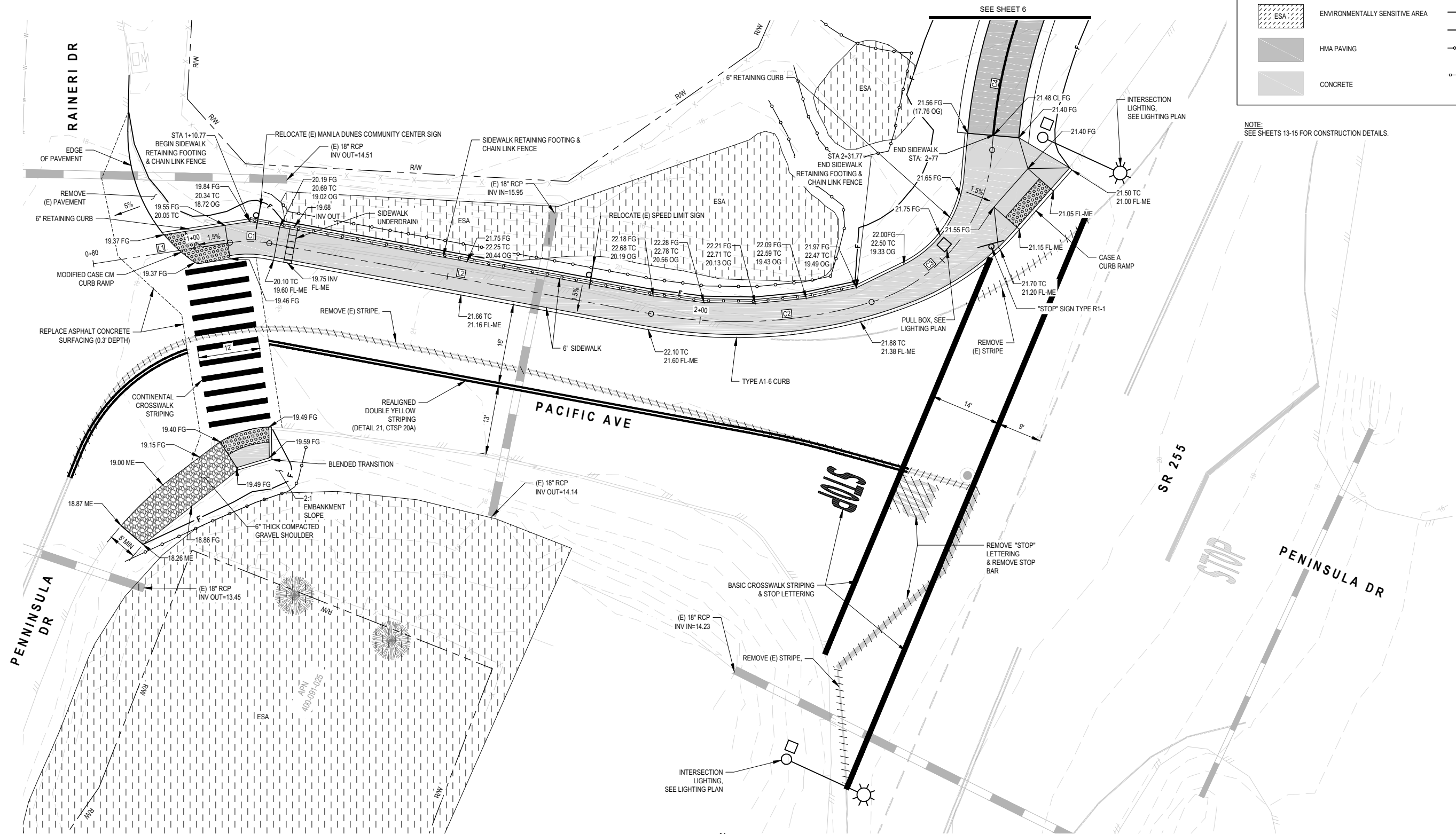
COUNTY OF HUMBOLDT
DEPARTMENT OF PUBLIC WORKS
MANILA HIGHWAY 255 SHARED USE PATH
SIDEWALK PLAN

SHEET 9 OF 21

LEGEND

	ENVIRONMENTALLY SENSITIVE AREA		CUT DAYLIGHT
	HMA PAVING		EDGE OF FILL
	CONCRETE		ESA EXCLUSION FENCING (TEMPORARY SILT FENCE)
			4' CHAIN LINK FENCE

NOTE:
SEE SHEETS 13-15 FOR CONSTRUCTION DETAILS.





GHD Inc.
718 Third Street
Eureka California 95501 USA
T 1 707 443 8326 F 1 707 444 8330 W www.ghd.com



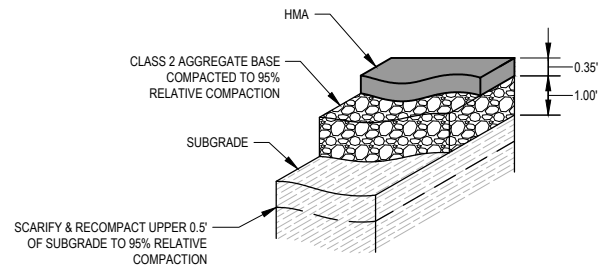
BAR IS ONE INCH ON ORIGINAL DRAWING
IF NOT ONE INCH ON THIS SHEET, ADJUST SCALES ACCORDINGLY

ROAD NAME:	SR 255
MILE POST:	3.64-3.96
PROJECT NO.:	ATPL-5904(151)
CONTRACT NO.:	715112
PLOT DATE:	10/21/2021

DESIGN SECTION	ENVIRONMENTAL
DESIGNED BY:	J.WOLF
DRAWN BY:	O.GOOD
REVIEWED BY:	J.SVEHLA
APPROVED BY:	J.WOLF

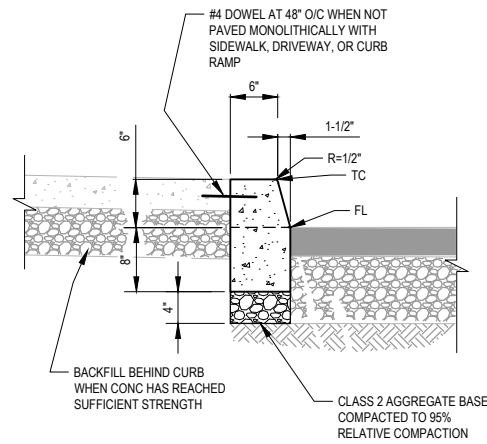
COUNTY OF HUMBOLDT DEPARTMENT OF PUBLIC WORKS
MANILA HIGHWAY 255 SHARED USE PATH
CONSTRUCTION DETAILS

SHEET
10
OF
21



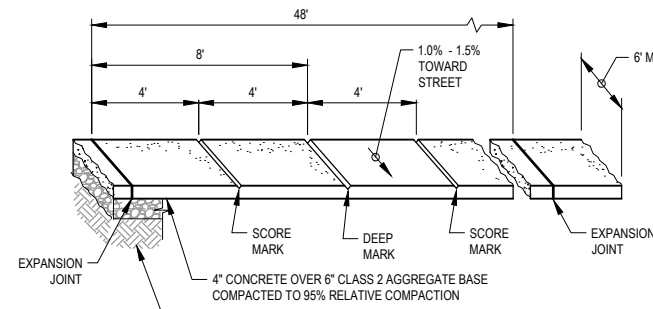
TYPICAL PAVEMENT SECTION

SCALE: NTS



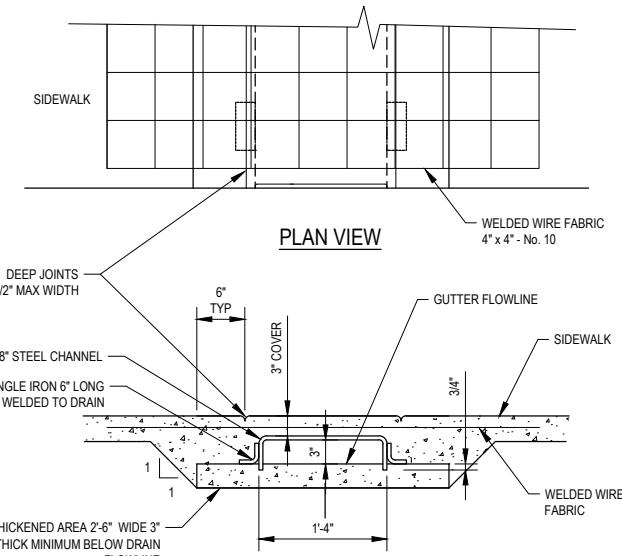
TYPICAL CURB DETAIL - TYPE A1-6

SCALE: NTS



TYPICAL SIDEWALK DETAIL

SCALE: NTS

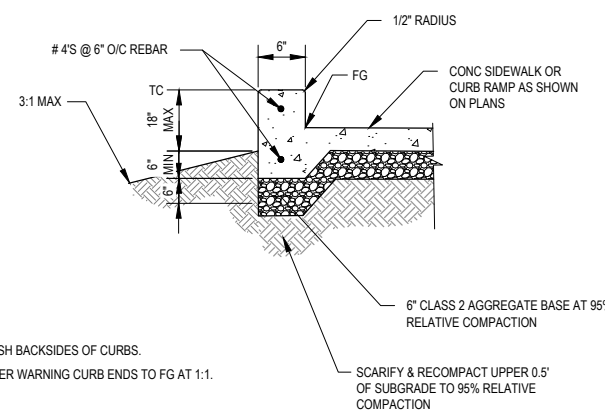


TYPICAL SIDEWALK UNDERDRAIN DETAIL

SCALE: NTS

- NOTES:
1. DEEP SCORE MARK OR WEAKENED PLANE-DEPTH EQUAL TO 3/4".
 2. EXPANSION JOINT MATERIAL TO BE 1/4" THICK PREMOLDED JOINT FILLER FULL THICKNESS OF CONCRETE. EXPANSION JOINTS TO ALIGN WITH EXPANSION JOINTS IN CURB & GUTTER.
 3. SIDEWALK SHALL BE BROOM FINISHED, DIRECTION OF BROOMING SHALL BE PERPENDICULAR TO DIRECTION OF TRAVEL.
 4. CONTRACTOR TO DRILL AND DOWEL #4'S AT 24" O.C. INTO EXISTING SIDEWALK AT JUNCTIONS TO EXISTING SIDEWALK, DRIVEWAY CURB, AND / OR GUTTER.
 5. PROVIDE THICKENED EDGE (8" THICK BY 6" WIDE) WHEN FLUSH WITH VEHICULAR AREAS.
 6. WIDTH OF SCORE MARK TO BE 1/2" MAX.
 7. MINIMUM ALLOWABLE CONCRETE SLOPES SHALL BE 1.0%.
 8. CONCRETE TO BE REINFORCED WITH #4'S AT 18" O/C EW.

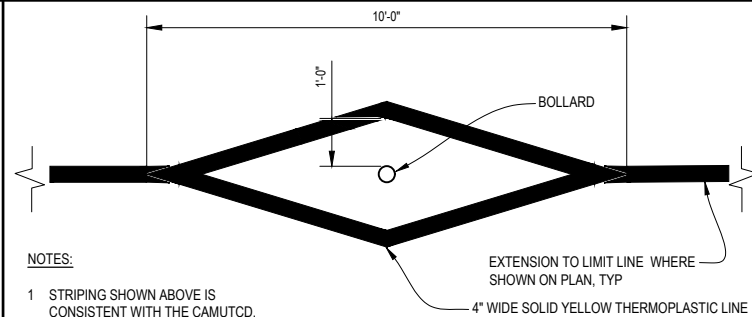
- NOTES:
1. BOTTOM OF DRAIN SHALL BE SLOPED AT 1% MIN. AWAY FROM THE ROAD GUTTER AND SHALL BE SMOOTHED PRIOR TO SETTING CHANNEL IN WET CONCRETE.
 2. AFTER SETTING CHANNEL, THICKENED AREA WILL BE ALLOWED TO SET UP ENOUGH TO PREVENT FURTHER SINKING OF CHANNEL. A COLD JOINT IS ACCEPTABLE.
 3. WIRE FABRIC SHALL BE 4' LONG (MIN.). WIDTH SHALL EQUAL SIDEWALK WIDTH MINUS 4".
 4. MITER CHANNEL AS NECESSARY TO BE FLUSH WITH CURB FACE.
 5. PROVIDE 6" THICK PAD OF CI 2 AB AT 95% RC BELOW ALL CONCRETE.



CONCRETE SIDEWALK WARNING CURB DETAIL

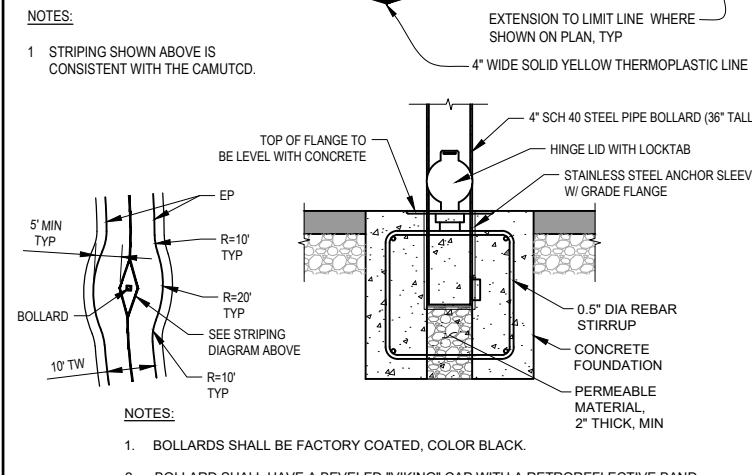
SCALE: NTS

- NOTES:
1. FINISH BACKSIDES OF CURBS.
 2. TAPER WARNING CURB ENDS TO FG AT 1:1.



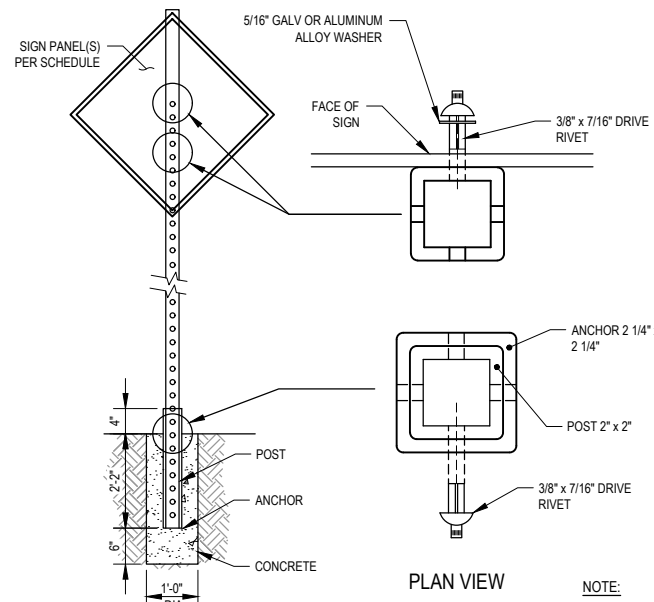
TYPICAL REMOVABLE BOLLARD & STRIPING DETAILS

SCALE: NTS



- NOTES:
1. STRIPING SHOWN ABOVE IS CONSISTENT WITH THE CAMUTCD.

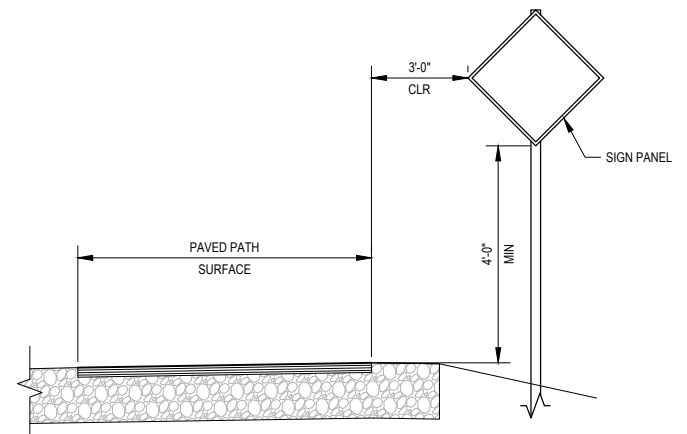
- NOTES:
1. BOLLARDS SHALL BE FACTORY COATED, COLOR BLACK.
 2. BOLLARD SHALL HAVE A BEVELED "VIKING" CAP WITH A RETROREFLECTIVE BAND.



ROADSIDE SIGN INSTALLATION DETAIL

SCALE: NTS

- NOTE:
1. POST, SLEEVE AND ANCHOR SHALL BE HOT DIPPED GALVANIZED STEEL CONFORMING TO ASTM A653 DES. G90.
 2. SIGN PANELS TO HAVE 7" CLEARANCE TO THE SURFACE OF SIDEWALKS AND CURB RAMPS.





GHD Inc.
718 Third Street
Eureka California 95501 USA
T 1 707 443 8326 F 1 707 444 8330 W www.ghd.com



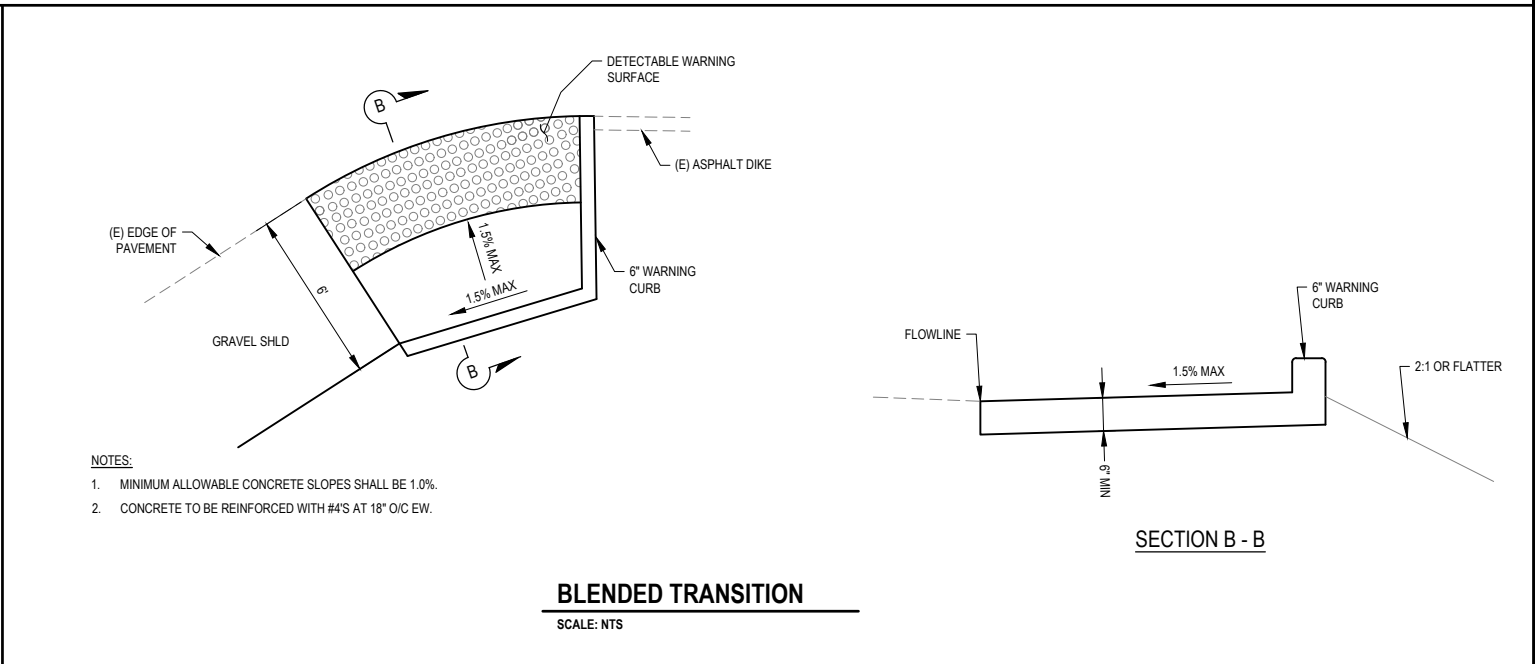
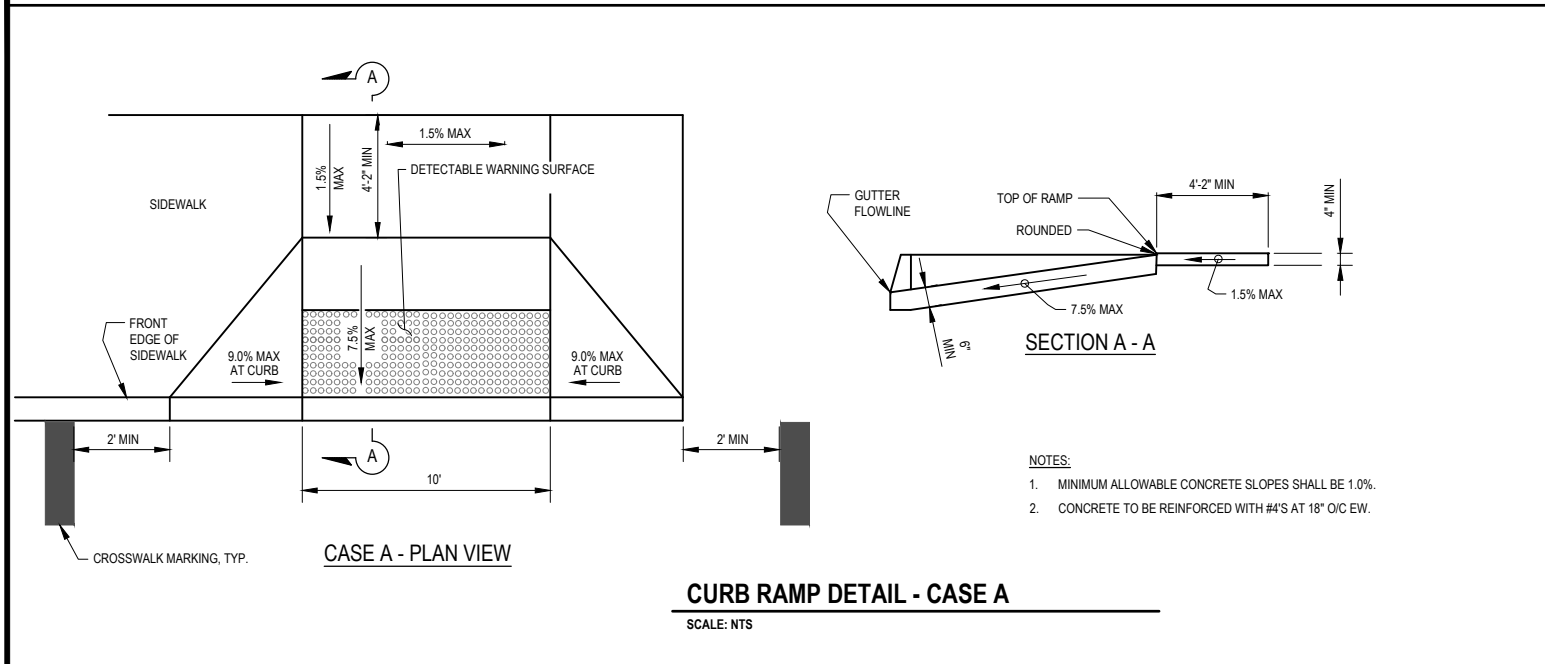
BAR IS ONE INCH ON ORIGINAL DRAWING
IF NOT ONE INCH ON THIS SHEET, ADJUST SCALES ACCORDINGLY

ROAD NAME:	SR 255
MILE POST:	3.64-3.96
PROJECT NO.:	ATPL-5904(151)
CONTRACT NO.:	715112
PLOT DATE:	10/21/2021

DESIGN SECTION	ENVIRONMENTAL
DESIGNED BY:	J.WOLF
DRAWN BY:	O.GOODIE
REVIEWED BY:	J.SVEHLA
APPROVED BY:	J.WOLF

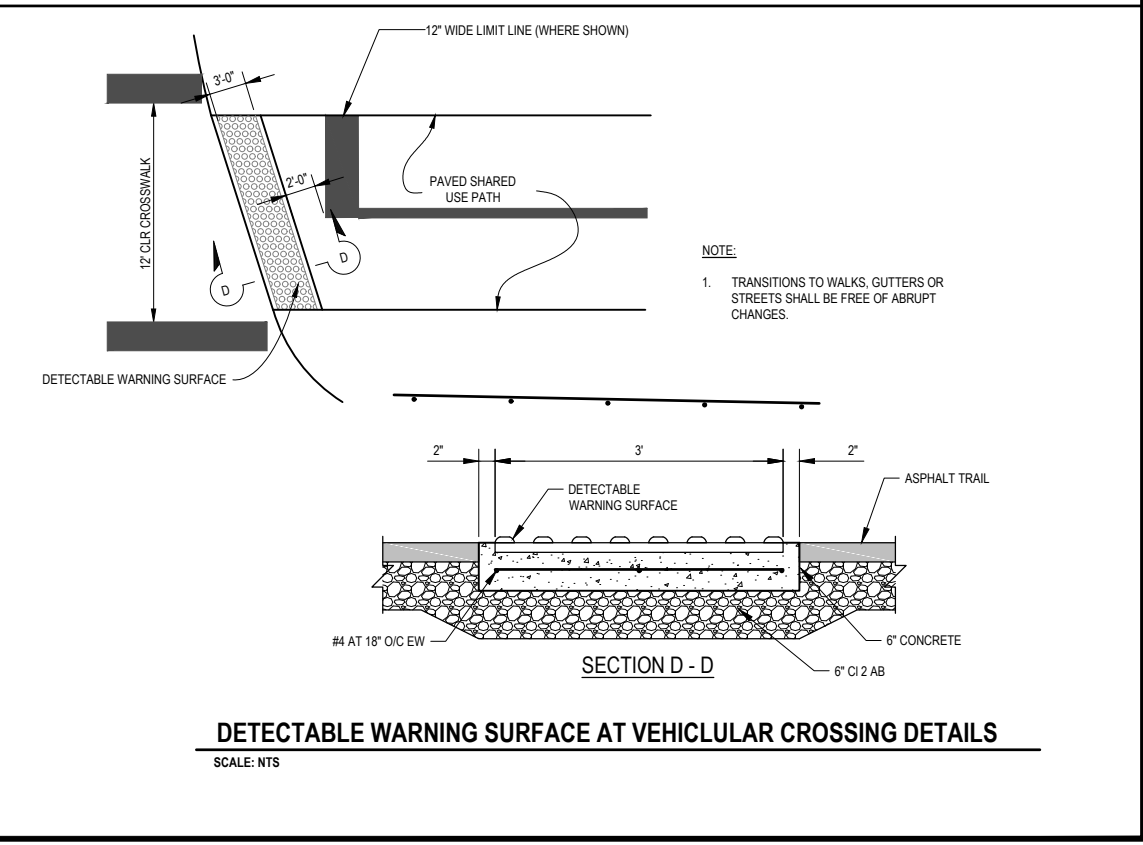
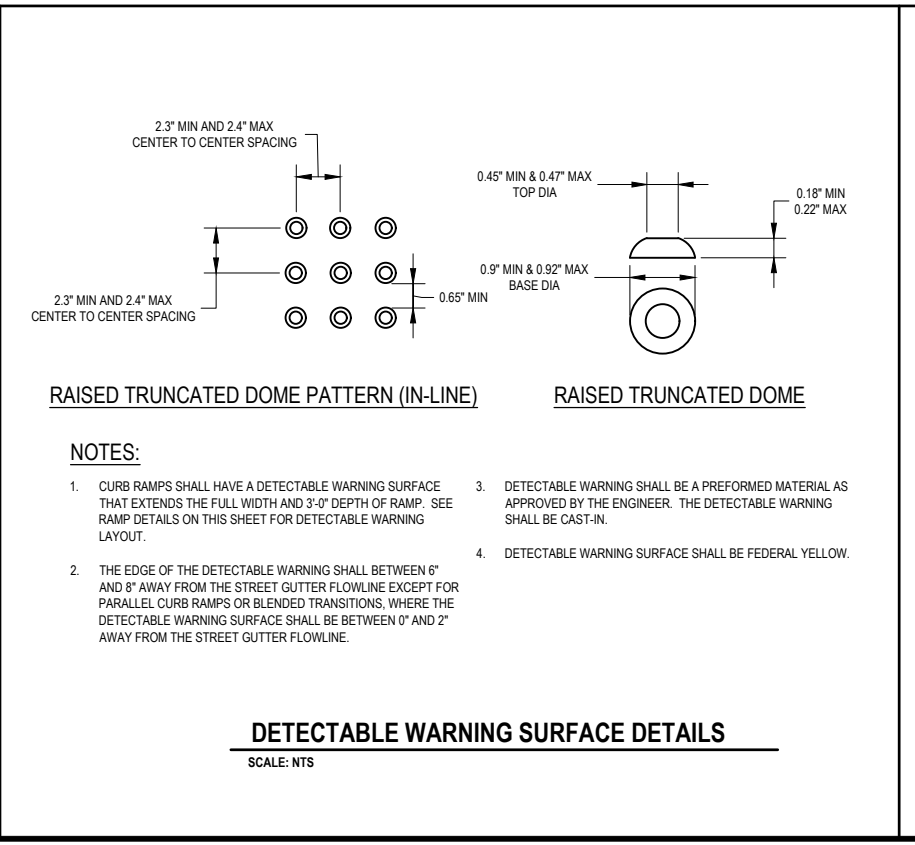
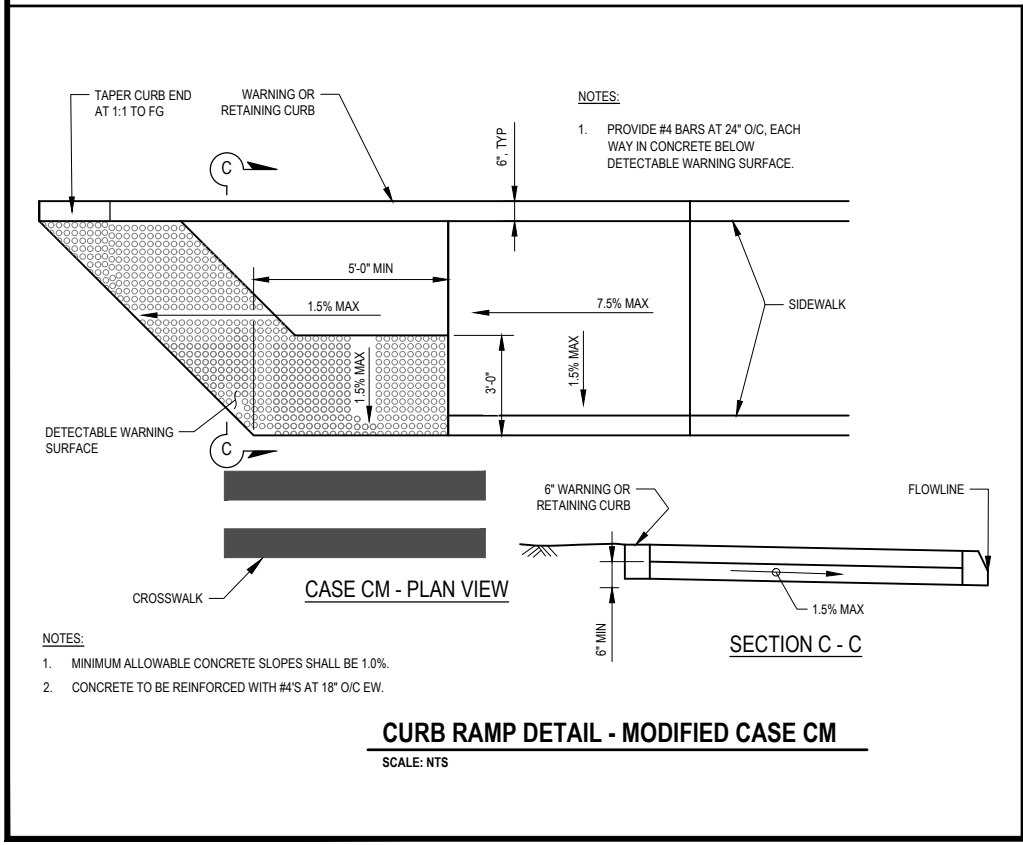
COUNTY OF HUMBOLDT DEPARTMENT OF PUBLIC WORKS
MANILA HIGHWAY 255 SHARED USE PATH
CONSTRUCTION DETAILS

SHEET
11
OF
21



PEDESTRIAN ACCESS NOTES:

- THE CURB RAMP STANDARDS DEPICTED HERE MAY NOT BE APPROPRIATE FOR ALL LOCATIONS. FIELD CONDITIONS AT INDIVIDUAL LOCATIONS MAY REQUIRE SPECIFIC DESIGNS. DESIGNS MUST BE CONSISTENT WITH THE PROVISIONS OF THE STATE OF CALIFORNIA DEPARTMENT OF TRANSPORTATION (CALTRANS) STANDARD PLANS (CURRENT EDITION) AND SUBSEQUENT REVISED STANDARD PLANS TO THE MAXIMUM EXTENT FEASIBLE.
- CURB RAMP SHALL BE 6" THICK (MINIMUM) CONCRETE PLACED OVER 6" OF CLASS 2 AGGREGATE BASE COMPACTED TO 95% RELATIVE COMPACTION. SCARIFY SUBGRADE 6" DEEP, MOISTURE CONDITION AND RECOMPACT TO 95% RELATIVE COMPACTION.
- TRANSITIONS FROM RAMPS AND LANDINGS TO WALKS, GUTTERS, OR STREETS SHALL BE FLUSH AND FREE OF ABRUPT CHANGES.
- MAXIMUM SLOPES OF ADJOINING GUTTERS, THE ROAD SURFACE IMMEDIATELY ADJACENT TO THE CURB RAMP OR ACCESSIBLE ROUTE SHALL NOT EXCEED 5% WITHIN 2'-0" OF THE CURB RAMP.
- DRILL AND DOWEL #4'S AT 24" O.C. INTO EXISTING CURB, GUTTERS, DRIVEWAYS AND SIDEWALKS.
- A 6" HIGH WARNING CURB IS REQUIRED PER CBC WHENEVER THERE IS AN ABRUPT CHANGE IN GRADE ELEVATION OFF THE EDGE OF A WALKING SURFACE THAT EXCEEDS 4" VERTICAL EXCEPT BETWEEN A SIDEWALK AND AN ADJACENT STREET. LOCATIONS TO BE AS DIRECTED DURING CONSTRUCTION.
- WHEN AN EXISTING ACCESSIBLE PATH OF TRAVEL IS TO BE BLOCKED OR REMOVED, THE CONTRACTOR SHALL SUBMIT A TEMPORARY ACCESS PLAN FOR APPROVAL. NO WORK SHALL COMMENCE UNTIL AN ACCESS PLAN HAS BEEN APPROVED BY THE AGENCY HAVING JURISDICTION.
- IF THE CONSTRUCTION WORK AREA IS WITHIN AN EXISTING FACILITY (E.G. BUS STOPS, CROSSWALKS, ETC.), CONTRACTOR SHALL PROVIDE 48 HOURS ADVANCE NOTICE TO OWNERS OF THE FACILITY INDICATING THE AFFECTED LOCATION AND DURATION OF WORK. NO TWO FACILITIES OR PROGRAMS IN SEQUENCE SHALL BE BLOCKED OR CLOSED FOR PUBLIC USE.
- PAYMENT FOR PROVIDING A CONTINUOUS PATH OF TRAVEL SHALL BE CONSIDERED AS INCLUDED IN VARIOUS ITEMS OF WORK AND NO SEPARATE PAYMENT SHALL BE MADE. PROVISIONS FOR CONTINUOUS PATH OF TRAVEL SHALL INCLUDE INSTALLATION AND MAINTENANCE OF TEMPORARY RAMPS, POTHOLING OF UTILITIES, RESTORATION OF EXISTING STREET IMPROVEMENTS, COORDINATION OF WORK, TRAFFIC CONTROLS AND ALL ASSOCIATED WORK NEEDED TO COMPLETE THIS REQUIREMENT.





GHD Inc.
718 Third Street
Eureka California 95501 USA
T 1 707 443 8326 F 1 707 444 8330 W www.ghd.com



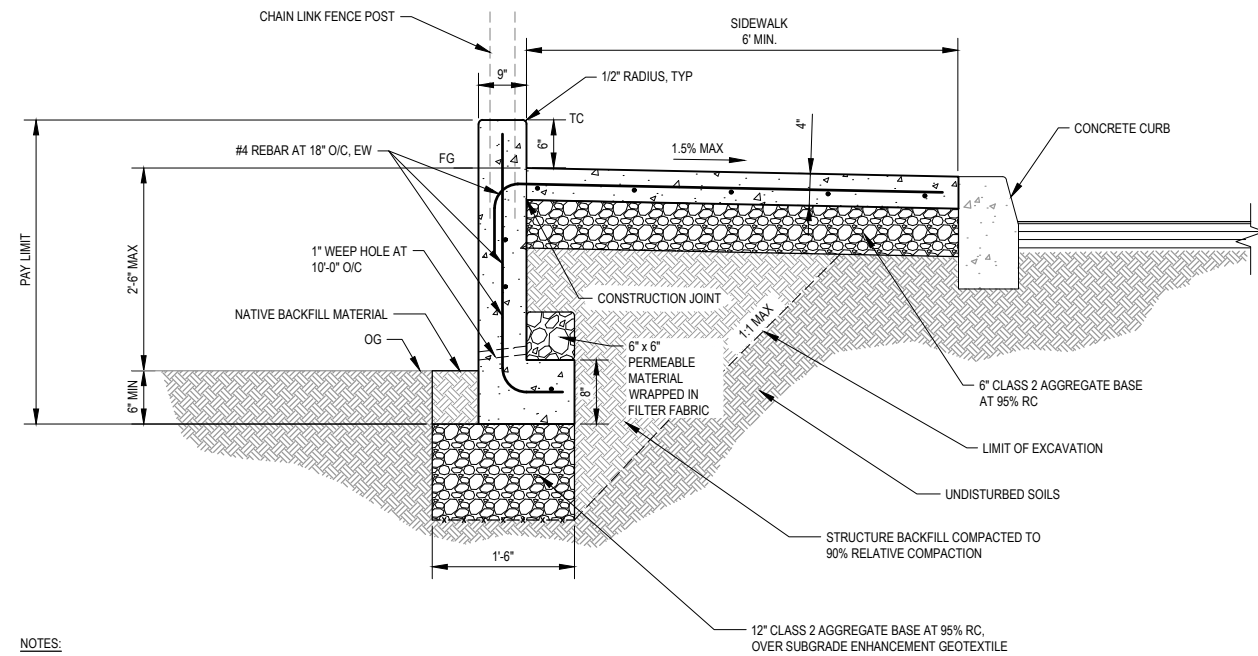
BAR IS ONE INCH ON ORIGINAL DRAWING
IF NOT ONE INCH ON THIS SHEET, ADJUST SCALES ACCORDINGLY

ROAD NAME:	SR 255
MILE POST:	3.64-3.96
PROJECT NO.:	ATPL-5904(151)
CONTRACT NO.:	715112
PLOT DATE:	10/21/2021

DESIGN SECTION	ENVIRONMENTAL
DESIGNED BY:	J.WOLF
DRAWN BY:	O.GOODIE
REVIEWED BY:	J.SVEHLA
APPROVED BY:	J.WOLF

COUNTY OF HUMBOLDT
DEPARTMENT OF PUBLIC WORKS
MANILA HIGHWAY 255 SHARED USE PATH
CONSTRUCTION DETAILS

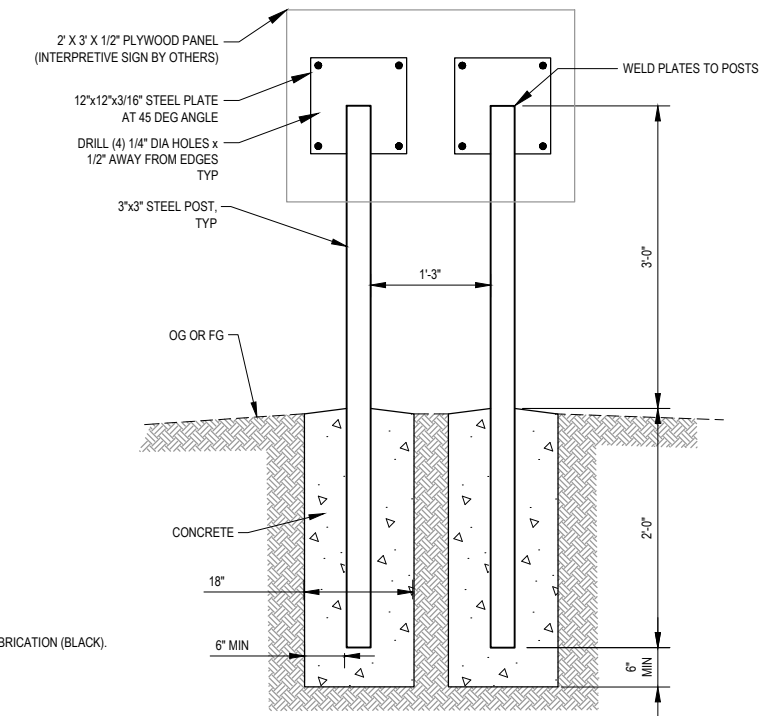
SHEET
12
OF
21



- NOTES:
- 1/2" EXPANSION JOINTS AT 48' O/C.
 - ALL BARS DISCONTINUOUS AT EXPANSION JOINTS.
 - PROVIDE JOINTS PER TYPICAL SIDEWALK DETAIL.
 - MINIMUM ALLOWABLE CONCRETE SLOPES SHALL BE 1.0%.

TYPICAL SIDEWALK WITH RETAINING FOOTING DETAIL

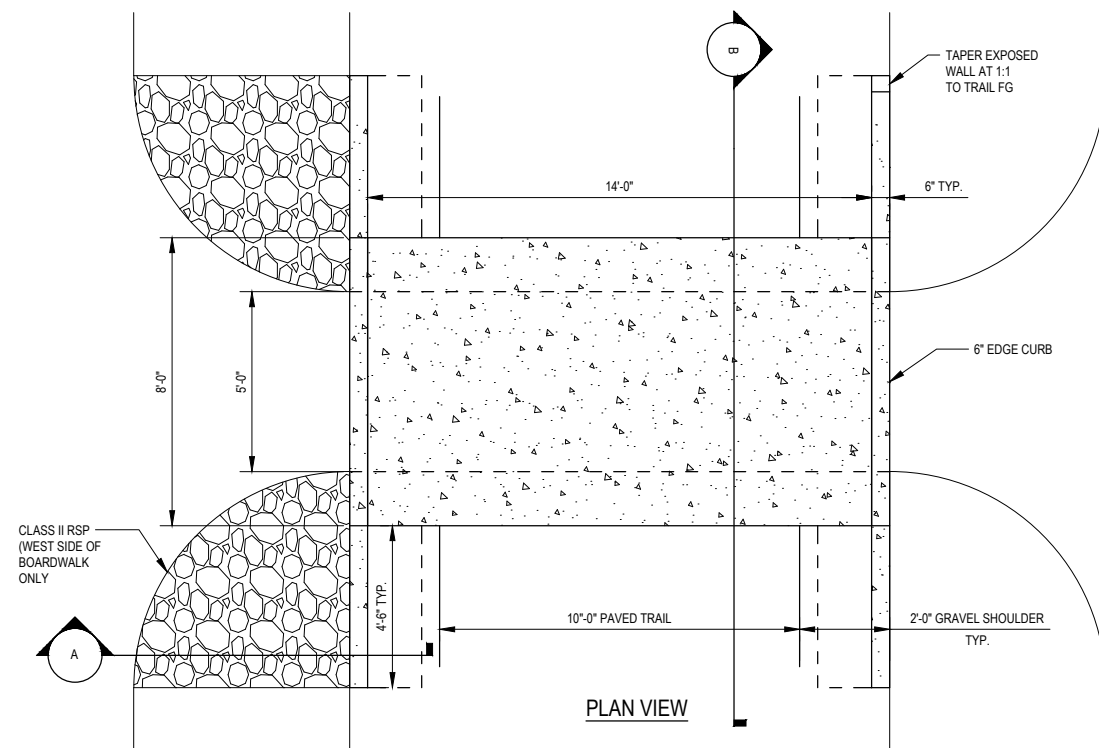
SCALE: NTS



- NOTE:
- POWDER COAT STEEL POSTS AND PLATES AFTER FABRICATION (BLACK).

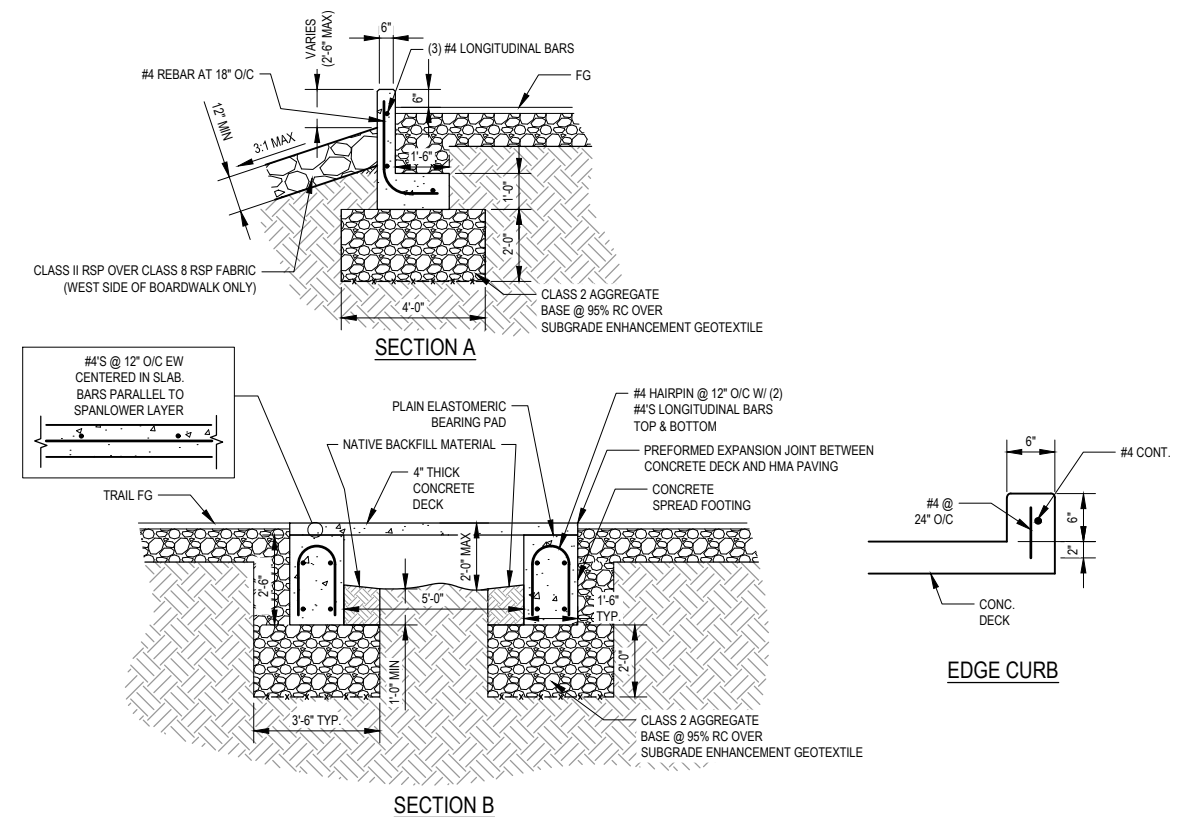
INTERPRETIVE SIGN DETAIL

SCALE: NTS



CONCRETE BOARDWALK DETAIL

SCALE: NTS



SECTION B



GHD Inc.
718 Third Street
Eureka California 95501 USA
T 1 707 443 8326 F 1 707 444 8330 W www.ghd.com



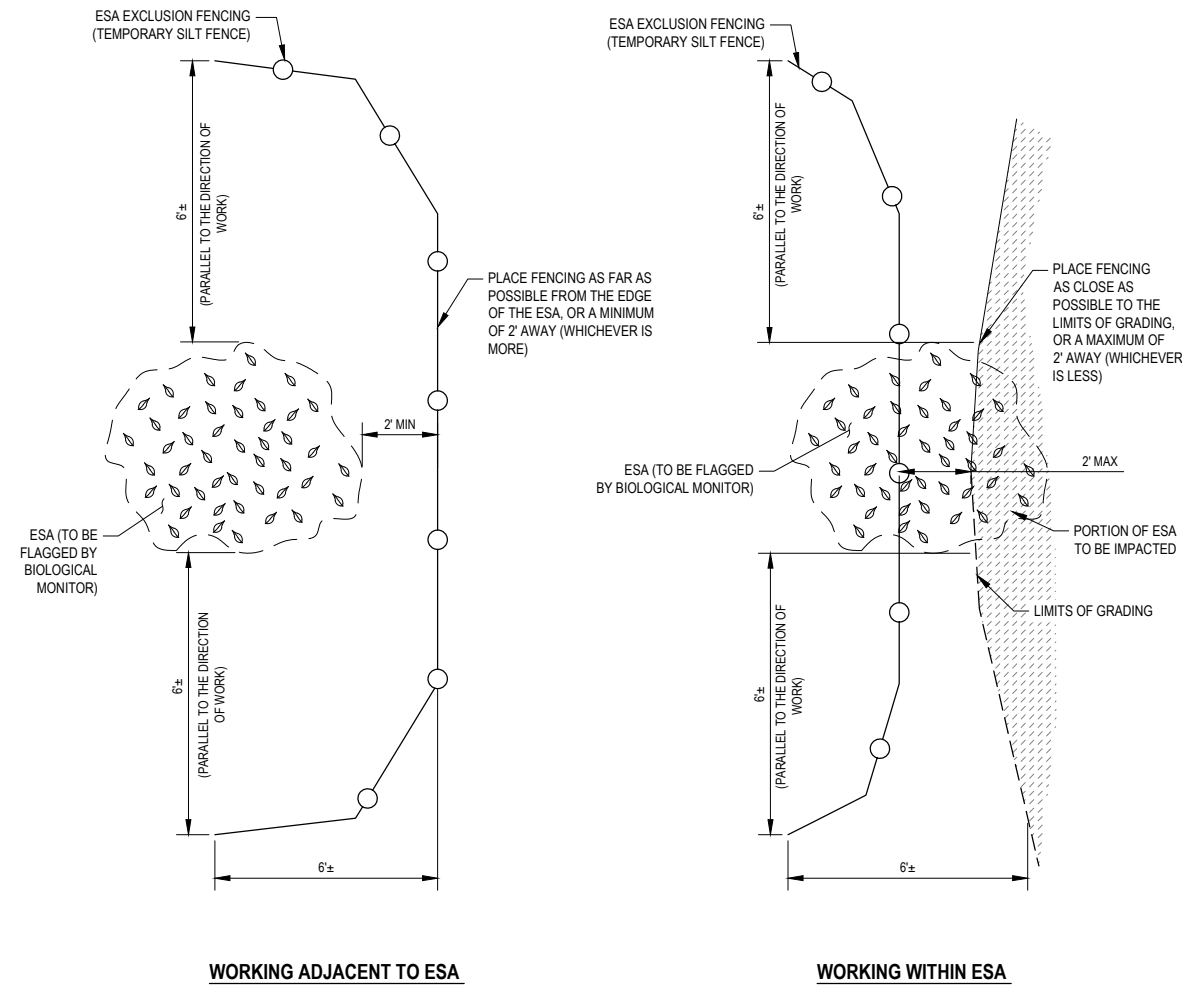
BAR IS ONE INCH ON ORIGINAL DRAWING
IF NOT ONE INCH ON THIS SHEET, ADJUST SCALES ACCORDINGLY

ROAD NAME:	SR 255
MILE POST:	3.64-3.96
PROJECT NO.:	ATPL-5904(151)
CONTRACT NO.:	715112
PLOT DATE:	10/21/2021

DESIGN SECTION	ENVIRONMENTAL
DESIGNED BY:	J.WOLF
DRAWN BY:	O.GOODIE
REVIEWED BY:	J.SVEHLA
APPROVED BY:	J.WOLF

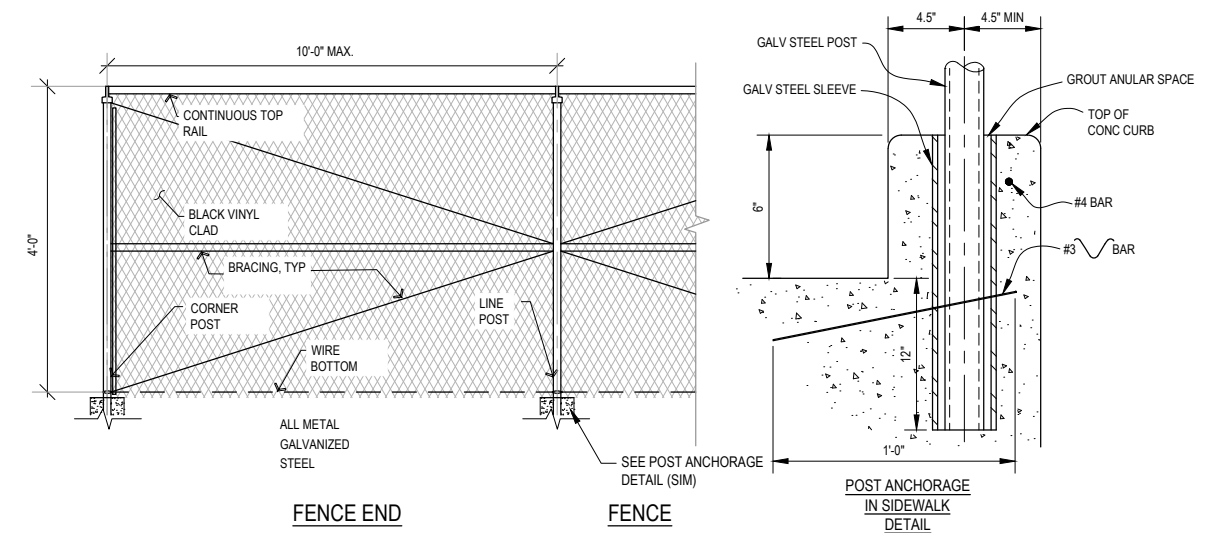
COUNTY OF HUMBOLDT DEPARTMENT OF PUBLIC WORKS MANILA HIGHWAY 255 SHARED USE PATH CONSTRUCTION DETAILS
--

SHEET
13
OF
21



ESA EXCLUSION FENCING

SCALE: NTS



FENCE POST NOTE:
TERMINAL POSTS SHALL BE 2-3/8" DIAMETER AND LINE POSTS SHALL BE 1-5/8" DIAMETER.

SLEEVE SCHEDULE

POST DIA.	SLEEVE DIA.
1-5/8"	2-5/8"
2-3/8"	3-3/8"

TYPICAL CHAIN LINK FENCE DETAIL

SCALE: NTS



GHD Inc.
718 Third Street
Eureka California 95501 USA
T 1 707 443 8326 F 1 707 444 8330 W www.ghd.com



BAR IS ONE INCH ON ORIGINAL DRAWING

IF NOT ONE INCH ON THIS SHEET, ADJUST SCALES ACCORDINGLY

ROAD NAME: SR 255	DESIGN SECTION ENVIRONMENTAL
MILE POST: 3.64-3.96	DESIGNED BY: J.WOLF
PROJECT NO.: ATPL-5904(151)	DRAWN BY: O.GOODIE
CONTRACT NO.: 715112	REVIEWED BY: M.SCHWARZ
PLOT DATE: 10/21/2021	APPROVED BY: J.WOLF

COUNTY OF HUMBOLDT DEPARTMENT OF PUBLIC WORKS	SHEET 14 OF 21
MANILA HIGHWAY 255 SHARED USE PATH	
PLANTING TABLES AND INSTALLATION SCHEDULE	

PLANTING MIX A: PALUSTRINE EMERGENT (TOTAL AREA 4,978 SF / 0.11 ACRES)

Symbol	Overall Spacing (feet on center)	Spacing Type	Quantity per Acre	Frequency (%)	Vegetation Strata	Species	Common Name	Unit	Plant Group Designation	Plant Quantities
[Cross-hatch symbol]	3	Random	1,761	35%	Obligate Wetland Plant	<i>Scirpus microcarpus</i>	small-fruit bulrush	4" Plug	P	194
			1,509	30%	Obligate Wetland Plant	<i>Carex obnupta</i>	slough sedge	4" Plug	P	166
			755	15%	Obligate Wetland Plant	<i>Oenanthe sarmentosa</i>	Pacific oenanthe	4" Plug	P	83
			503	10%	Obligate Wetland Plant	<i>Potentilla anserina subsp. Pacifica</i>	Pacific silverweed	4" Plug	P	55
			503	10%	Facultative Wetland Plant	<i>Juncus breweri</i>	salt rush	4" Plug	P	55

PLANT INSTALLATION SCHEDULE	
ACTIVITY DESCRIPTION	DATE(S) / TIMELINE
PIEZOMETER INSTALLATION	FOLLOWING APPROVAL OF FINISHED GRADING AND PRIOR TO SEED APPLICATION AND PLANT INSTALLATION
SEED, STRAW, AND RECP APPLICATION	SEPTEMBER 15 TO OCTOBER 31
PLANT INSTALLATION	NOVEMBER 1 TO DECEMBER 15

PLANTING MIX B: PALUSTRINE SCRUB - SHRUB (TOTAL AREA 17,564 SF / 0.40 ACRES)

Symbol	Overall Spacing (feet on center)	Spacing Type	Quantity per Acre	Frequency (%)	Vegetation Strata	Species	Common Name	Unit	Plant Group Designation	Plant Quantities
[Vertical lines symbol]	10	Random	91	20%	Facultative Wetland Plant	<i>Salix hookeriana</i>	coastal willow	Cutting	H	36
	10		91	20%	Facultative Wetland Plant	<i>Salix lasiandra</i>	Pacific willow	Cutting	H	36
[Vertical lines symbol]	20		22.8	20%	Facultative Wetland Plant	<i>Morella californica</i>	California wax myrtle	1-gal container	A	9
	3		1,006	20%	Obligate Wetland Plant	<i>Carex obnupta</i>	slough sedge	4" Plug	P	402
	3		1,006	20%	Obligate Wetland Plant	<i>Oenanthe sarmentosa</i>	Pacific oenanthe	4" Plug	P	402

PLANTING MIX C: ONE PARAMETER COASTAL WILLOW WETLANDS (TOTAL AREA 693 SF / 0.016 ACRES)

Symbol	Overall Spacing (feet on center)	Spacing Type	Quantity per Acre	Frequency (%)	Vegetation Strata	Species	Common Name	Unit	Plant Group Designation	Plant Quantities
[Diagonal lines symbol]	20	Random	45.6	40%	Facultative Wetland Plant	<i>Morella californica</i>	California wax myrtle	1-gal container	A	1
	10		91	20%	Facultative Wetland Plant	<i>Rubus ursinus</i>	California blackberry	1-gal container	A	1
	10		181	40%	Facultative Wetland Plant	<i>Salix hookeriana</i>	coastal willow	Cutting	H	3

NOTE: THIS SHEET IS ACCURATE FOR WETLAND CREATION ONLY



GHD Inc.
718 Third Street
Eureka California 95501 USA
T 1 707 443 8326 F 1 707 444 8330 W www.ghd.com



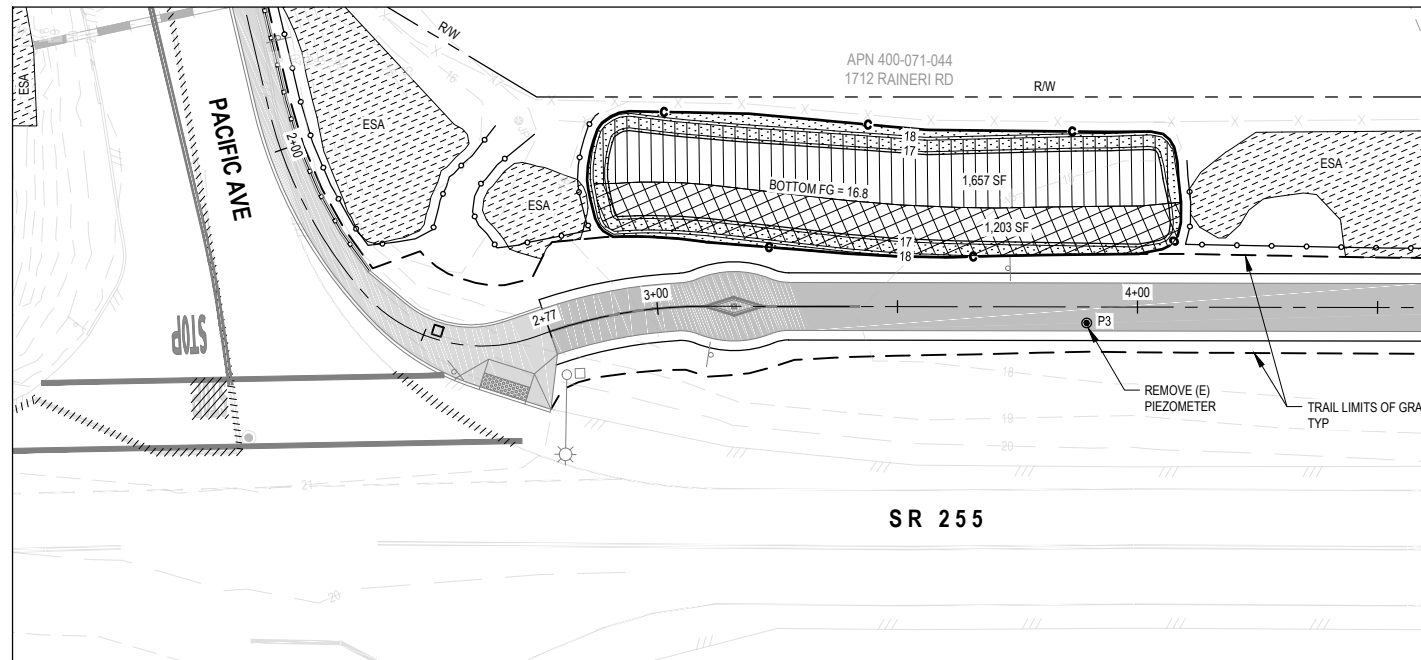
BAR IS ONE INCH ON ORIGINAL DRAWING
IF NOT ONE INCH ON THIS SHEET, ADJUST SCALES ACCORDINGLY

ROAD NAME: SR 255
MILE POST: 3.64-3.96
PROJECT NO.: ATPL-5904(151)
CONTRACT NO.: 715112
PLOT DATE: 10/21/2021

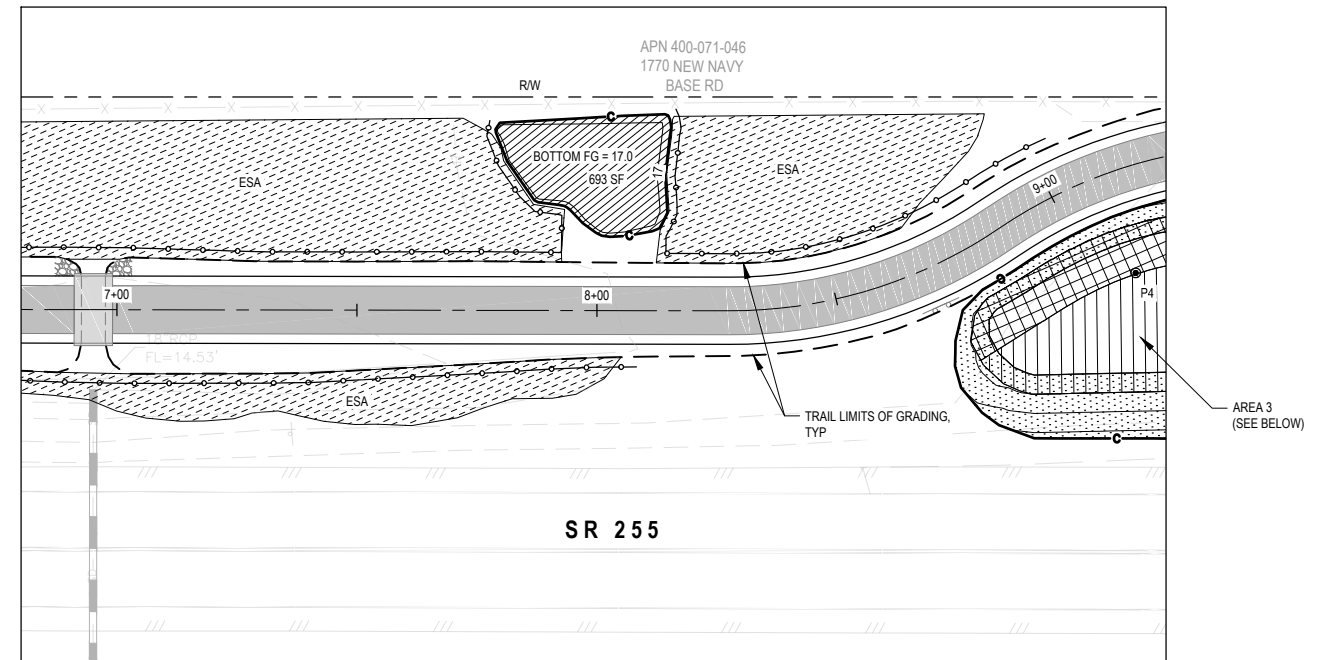
DESIGN SECTION ENVIRONMENTAL
DESIGNED BY: J.WOLF
DRAWN BY: O.GOODIE
REVIEWED BY: M.SCHWARZ
APPROVED BY: J.WOLF

COUNTY OF HUMBOLDT
DEPARTMENT OF PUBLIC WORKS
MANILA HIGHWAY 255 SHARED USE PATH
WETLAND CREATION AREAS 1 - 4

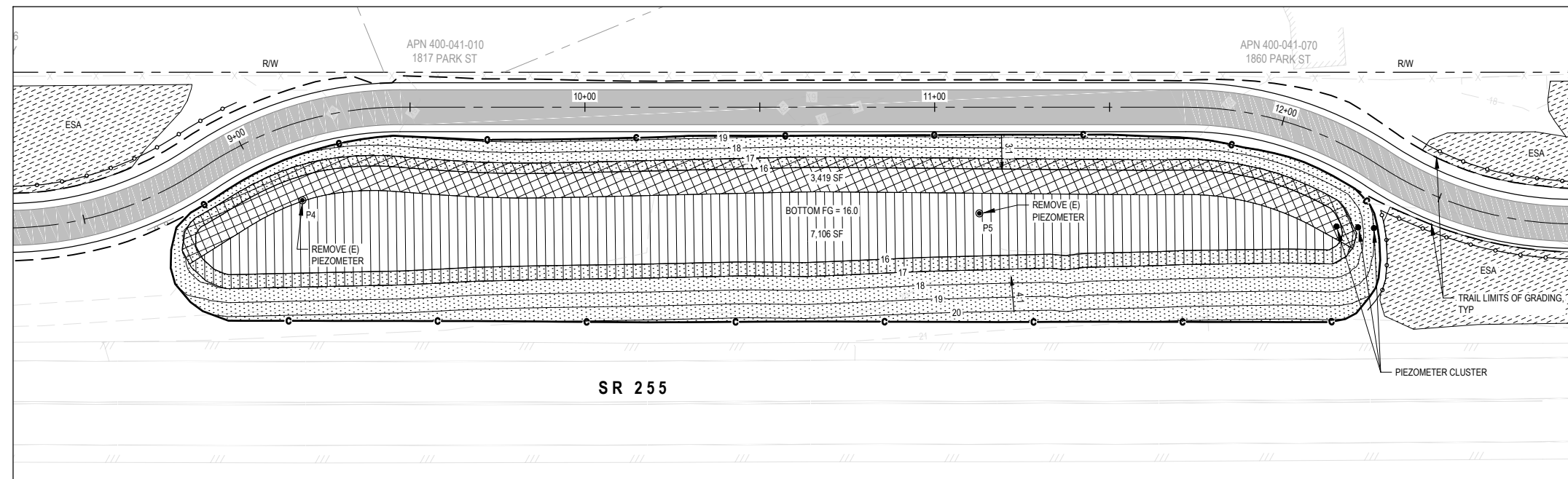
SHEET 15 OF 21



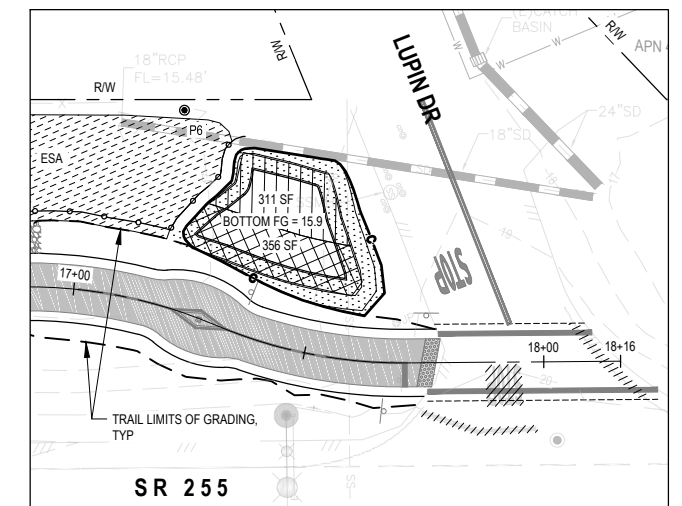
AREA 1: STA 2+91 TO STA 4+10



AREA 2: STA 7+79 TO STA 8+15

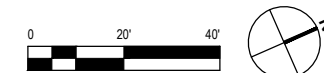


AREA 3: STA 8+68 TO STA 12+44



AREA 4: STA 17+19 TO STA 17+66

LEGEND	
	ENVIRONMENTALLY SENSITIVE AREA
	(E) PIEZOMETER
	HMA PAVING
	ESA EXCLUSION FENCING (TEMPORARY SILT FENCE)
	CUT DAYLIGHT
	PIEZOMETER
	PALUSTRINE EMERGENT PLANTING MIX
	PALUSTRINE SCRUB-SHRUB PLANTING MIX
	ONE-PARAMETER COASTAL PLANTING MIX
	WETLAND EDGE SEED MIX (SEE SPECIAL PROVISIONS)



NOTE: THIS SHEET IS ACCURATE FOR WETLAND CREATION ONLY



GHD Inc.
718 Third Street
Eureka California 95501 USA
T 1 707 443 8326 F 1 707 444 8330 W www.ghd.com



BAR IS ONE INCH ON ORIGINAL DRAWING

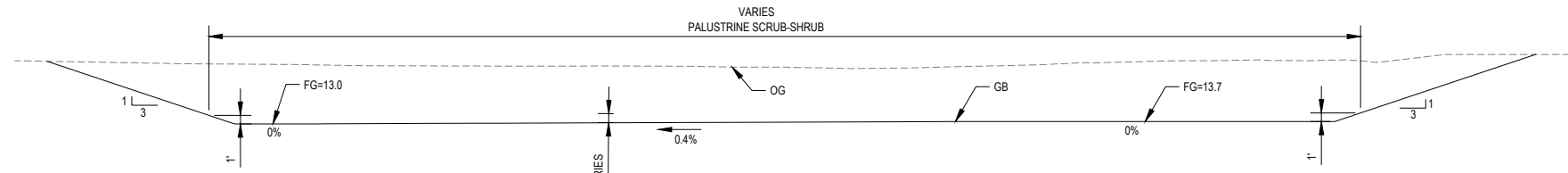
IF NOT ONE INCH ON THIS SHEET, ADJUST SCALES ACCORDINGLY

ROAD NAME:	SR 255
MILE POST:	3.64-3.96
PROJECT NO.:	ATPL-5904(151)
CONTRACT NO.:	715112
PLOT DATE:	10/21/2021

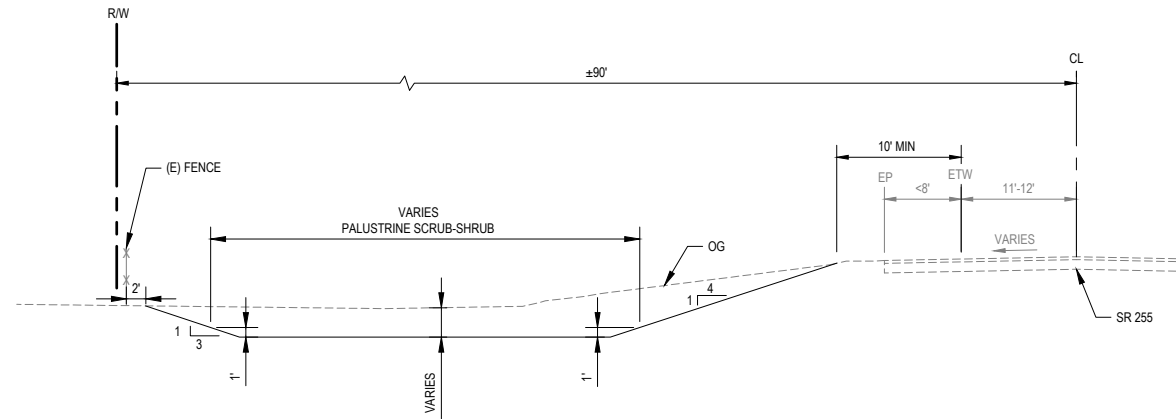
DESIGN SECTION	ENVIRONMENTAL
DESIGNED BY:	J.WOLF
DRAWN BY:	O.GOODIE
REVIEWED BY:	M.SCHWARZ
APPROVED BY:	J.WOLF

COUNTY OF HUMBOLDT
DEPARTMENT OF PUBLIC WORKS
MANILA HIGHWAY 255 SHARED USE PATH
WETLAND CREATION AREA 5

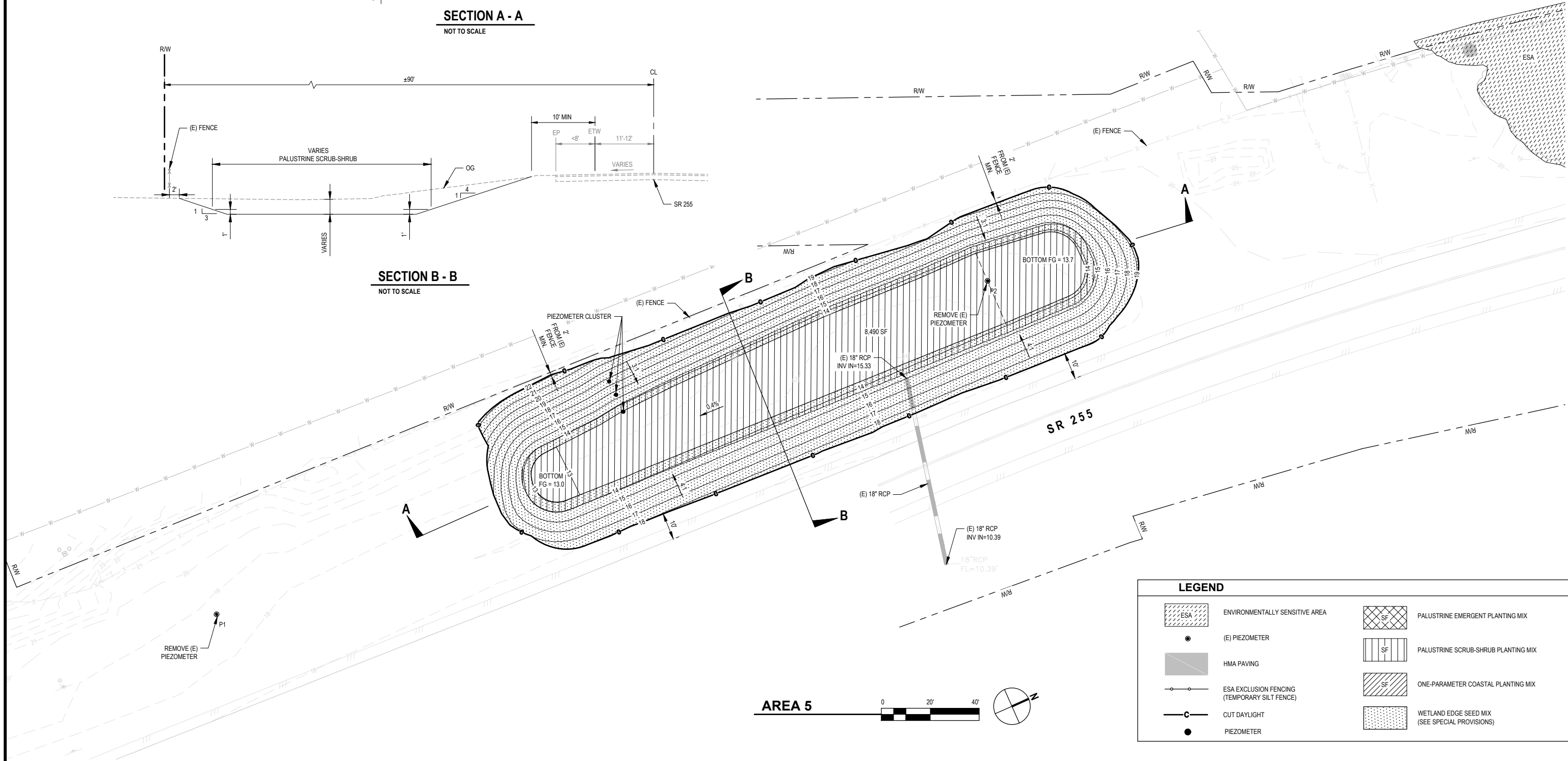
SHEET
16
OF
21



SECTION A - A
NOT TO SCALE



SECTION B - B
NOT TO SCALE



LEGEND

	ENVIRONMENTALLY SENSITIVE AREA		PALUSTRINE EMERGENT PLANTING MIX
	(E) PIEZOMETER		PALUSTRINE SCRUB-SHRUB PLANTING MIX
	HMA PAVING		ONE-PARAMETER COASTAL PLANTING MIX
	ESA EXCLUSION FENCING (TEMPORARY SILT FENCE)		WETLAND EDGE SEED MIX (SEE SPECIAL PROVISIONS)
	CUT DAYLIGHT		
	PIEZOMETER		

AREA 5





GHD Inc.
718 Third Street
Eureka California 95501 USA
T 1 707 443 8326 F 1 707 444 8330 W www.ghd.com



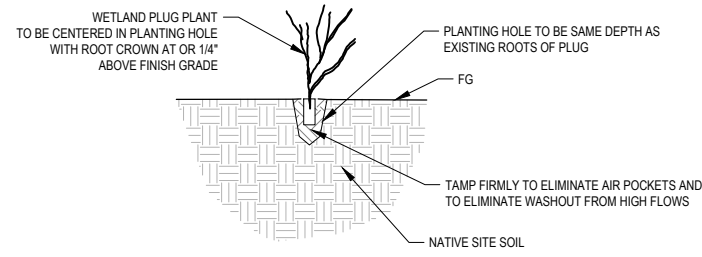
BAR IS ONE INCH ON ORIGINAL DRAWING
IF NOT ONE INCH ON THIS SHEET, ADJUST SCALES ACCORDINGLY

ROAD NAME:	SR 255
MILE POST:	3.64-3.96
PROJECT NO.:	ATPL-5904(151)
CONTRACT NO.:	715112
PLOT DATE:	10/21/2021

DESIGN SECTION	ENVIRONMENTAL
DESIGNED BY:	J.WOLF
DRAWN BY:	O.GOODIE
REVIEWED BY:	M.SCHWARZ
APPROVED BY:	J.WOLF

COUNTY OF HUMBOLDT
DEPARTMENT OF PUBLIC WORKS
MANILA HIGHWAY 255 SHARED USE PATH
WETLAND CREATION DETAILS

SHEET
17
OF
21

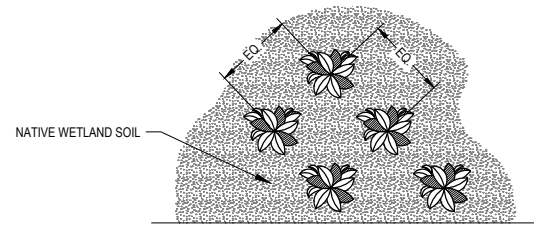


SECTION

NOTES:

1. USE SPADE OR TROWEL TO DIG HOLE BY HAND.
2. SCARIFY SIDES AND BOTTOM OF PLANTING HOLE.

PLUG INSTALLATION



PLAN VIEW

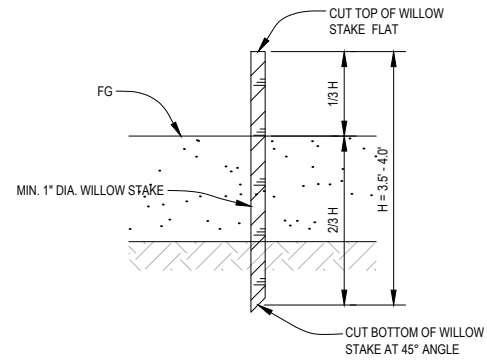
NOTES:

1. SEE PLANTING SCHEDULE SHEET 14 FOR WETLAND PLUG SPECIES, SIZE, AND SPACING DIMENSION.

PLUG PLACEMENT

PLUG PLANTING DETAIL

NOT TO SCALE

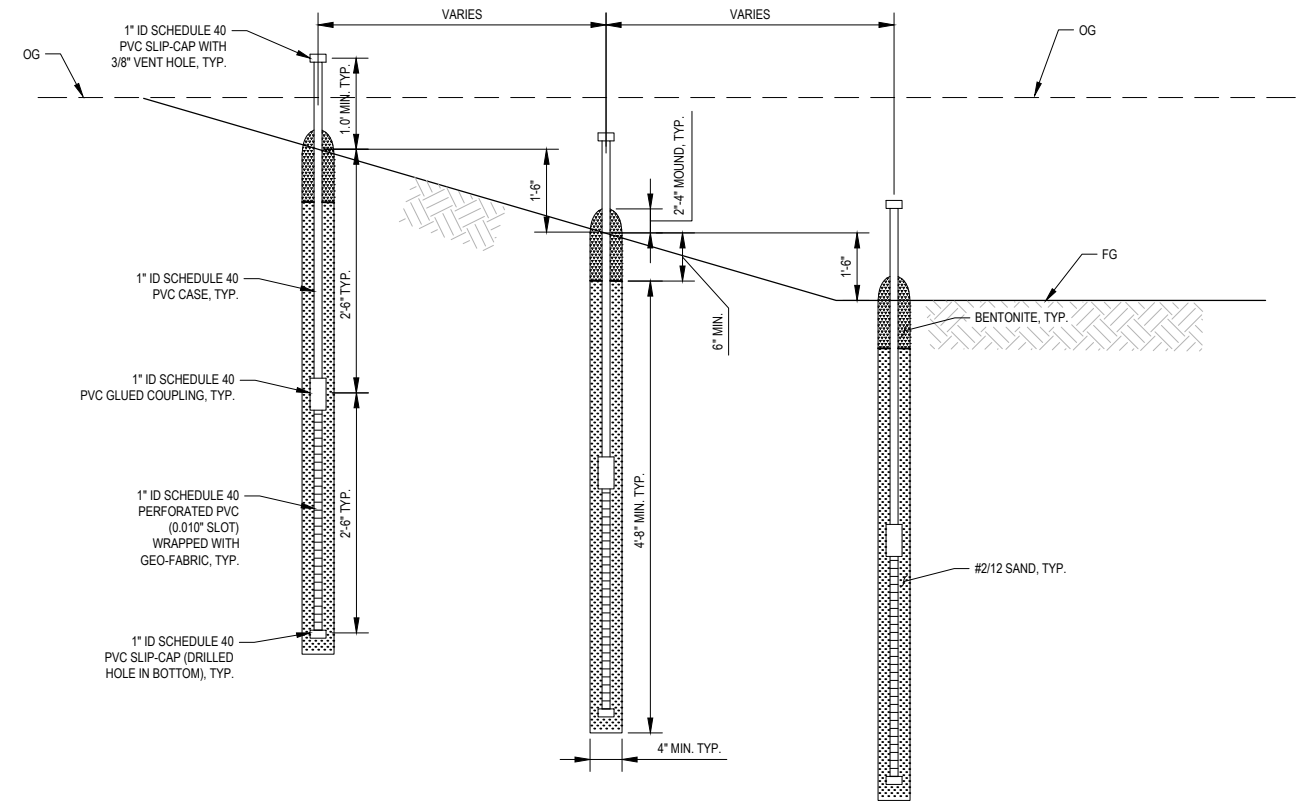


NOTES:

1. LIVE WILLOW HARVEST AREAS SHALL BE APPROVED BY THE COUNTY
2. LIVE WILLOWS SHALL BE INSTALLED WITHIN 3-DAYS OF BEING HARVESTED
3. LIVE WILLOW STAKES SHALL BE DRIVEN INTO THE GROUND WITH CARE TO AVOID SPLITTING ENDS

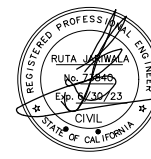
LIVE WILLOW STAKE DETAIL

NOT TO SCALE



PIEZOMETER CLUSTER DETAIL

NOT TO SCALE

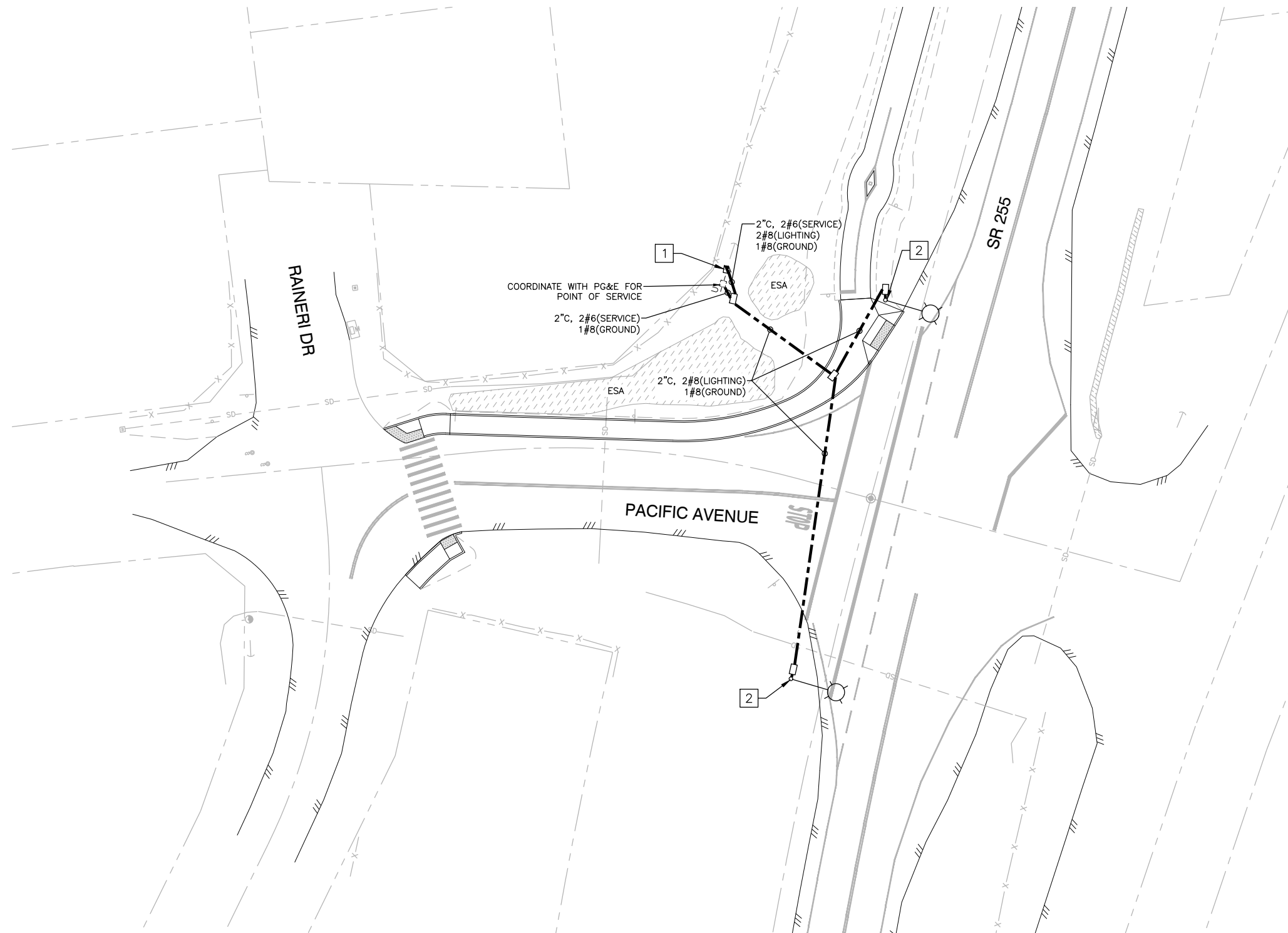


TJKM
 4305 Hacienda Drive, Suite 550
 Pleasanton, CA 94588
 tjkm@tjkm.com

BAR IS ONE INCH ON ORIGINAL DRAWING
 IF NOT ONE INCH ON THIS SHEET, ADJUST SCALES ACCORDINGLY

ROAD NAME: SR 255	DESIGN SECTION ELECTRICAL
MILE POST: 3.64-4.14	DESIGNED BY: R.PATEL
PROJECT NO.: ATPL-5904(151)	DRAWN BY: R.FLORES
CONTRACT NO.: 715112	REVIEWED BY: R.PATEL
PLOT DATE: 10/21/2021	APPROVED BY: R.JARIWALA

COUNTY OF HUMBOLDT DEPARTMENT OF PUBLIC WORKS	SHEET 18 OF 21
MANILA HIGHWAY 255 SHARED USE PATH	
STREET LIGHTING PLANS	



GENERAL ELECTRICAL NOTES:

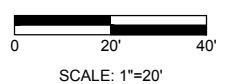
1. ALL CONSTRUCTION AND MATERIALS SHALL BE IN ACCORDANCE WITH THE LATEST EDITIONS OF HUMBOLDT COUNTY IMPROVEMENT STANDARDS AND THE 2018 CALTRANS STANDARD PLANS AND SPECIFICATIONS AND REVISED SECTIONS.
2. ELECTRICAL PLANS ARE DIAGRAMATIC AND ARE CORRECT FOR GENERAL DESIGN ONLY. THE EXACT LOCATIONS OF EQUIPMENT AND APPURTENANCES SHALL BE DETERMINED IN THE FIELD BY THE ELECTRICAL ENGINEER.
3. POLES AND PULL BOXES, SHALL BE LOCATED IN THE PRESENCE OF THE ENGINEER. LOCATIONS SHALL BE APPROVED BY THE ENGINEER PRIOR TO INSTALLATION. CONTRACTOR SHALL CONTACT ENGINEER AT LEAST 2 WORKING DAYS PRIOR TO LOCATING EQUIPMENT TO ARRANGE FOR THE PRESENCE OF THE ENGINEER.
4. ALL UTILITIES SHOWN ON THESE PLANS ARE APPROXIMATE ONLY. THE CONTRACTOR SHALL VERIFY OVERHEAD AND UNDERGROUND CLEARANCE WITH P.G.&E., AT&T, AND OTHER AFFECTED UTILITIES PRIOR TO THE START OF WORK.
5. THIS PLAN ACCURATE FOR ELECTRICAL WORK ONLY.
6. ALL NEW PULL BOXES SHALL BE NO. 5 UNLESS OTHERWISE NOTED.
7. CONDUIT INSTALLATION ACROSS ROADWAYS AND THROUGH WETLANDS SHALL BE BY JACKING AND DIRECTIONAL DRILLING METHODS UNLESS NOTED OTHERWISE.
8. CONTRACTOR SHALL CONTACT PG&E TO VERIFY SERVICE POINT FOR THE STREET LIGHTING SYSTEM AND POLE NUMBERS FOR ALL LUMINAIRE POLES PRIOR TO START OF WORK.
9. ALL CONDUIT SHALL BE 2" UNLESS OTHERWISE NOTED ON THE PLAN.

LEGEND:

- EXISTING UTILITY POLE
- PROPOSED TYPE 15-SB STREET LIGHT POLE (LED 87W)
- PROPOSED NO. 5 PULL BOX
- PROPOSED TYPE III-AF SERVICE PEDESTAL
- PROPOSED CONDUIT

PROJECT NOTES:

- 1** FURNISH AND INSTALL TYPE III-AF SERVICE PEDESTAL WITH 30A STREET LIGHTING CIRCUIT BREAKER.
- 2** FURNISH AND INSTALL TYPE 15-SB POLE PER CALTRANS STANDARD PLAN ES-6A.



NOTE: THIS SHEET IS ACCURATE FOR EROSION CONTROL ONLY



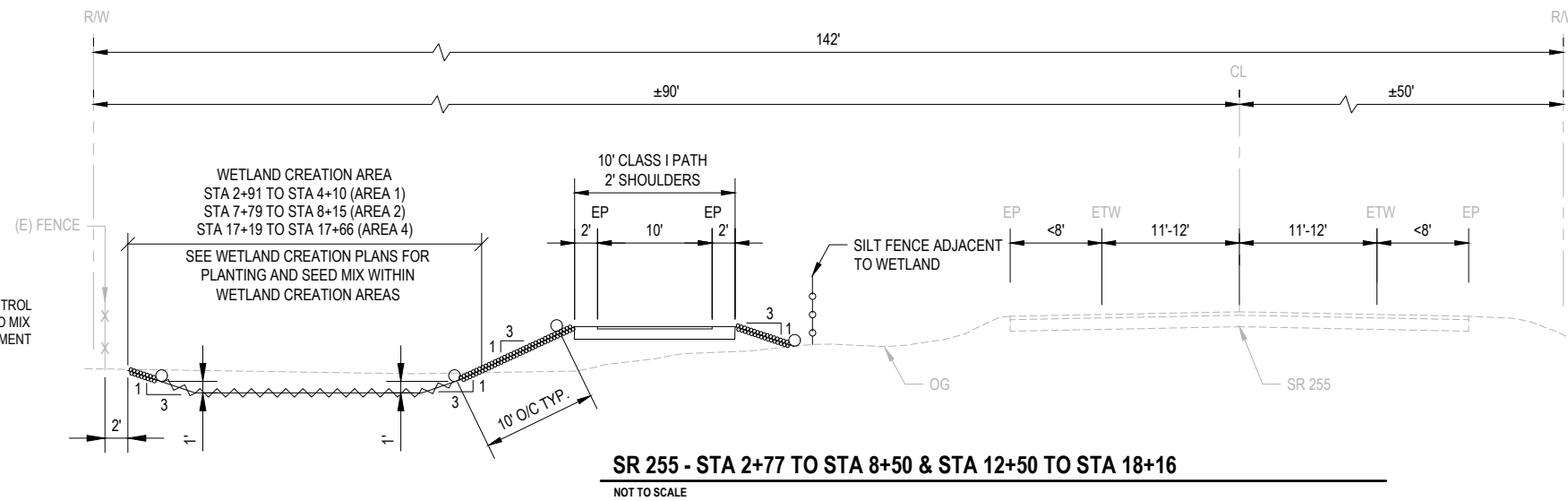
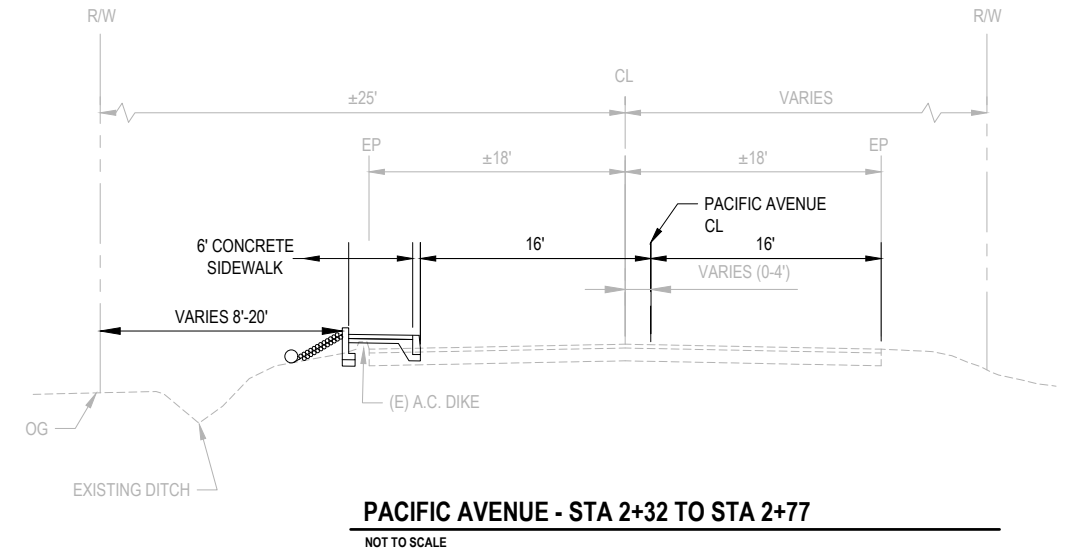
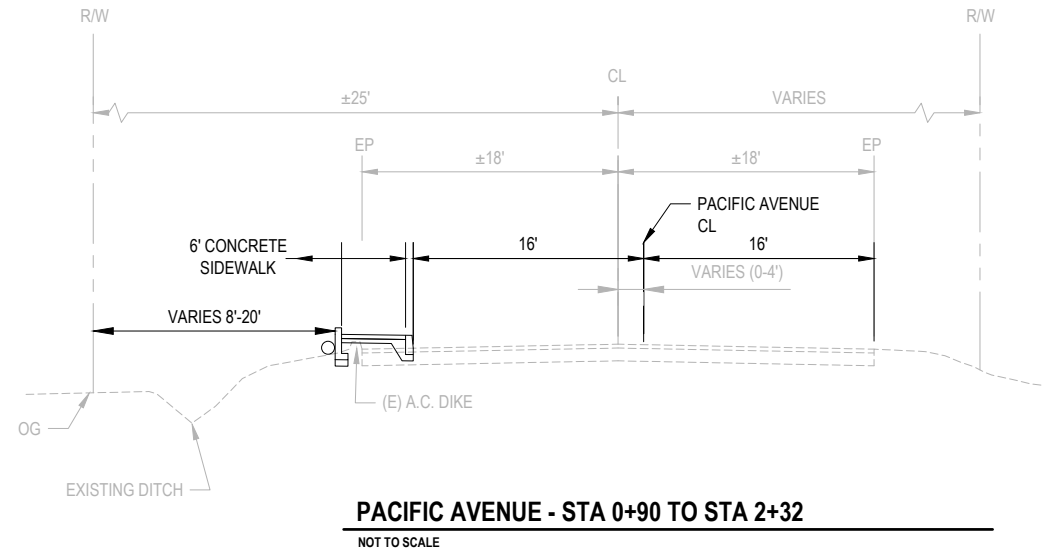
GHD Inc.
718 Third Street
Eureka California 95501 USA
T 1 707 443 8326 F 1 707 444 8330 W www.ghd.com



BAR IS ONE INCH ON ORIGINAL DRAWING
IF NOT ONE INCH ON THIS SHEET, ADJUST SCALES ACCORDINGLY

ROAD NAME: SR 255	DESIGN SECTION ENVIRONMENTAL
MILE POST: 3.64-3.96	DESIGNED BY: J.WOLF
PROJECT NO: ATPL-5904(151)	DRAWN BY: O.GOODIE
CONTRACT NO: 715112	REVIEWED BY: J.SVEHLA
PLOT DATE: 10/21/2021	APPROVED BY: J.WOLF

COUNTY OF HUMBOLDT DEPARTMENT OF PUBLIC WORKS	SHEET 19 OF 21
MANILA HIGHWAY 255 SHARED USE PATH	
EROSION CONTROL	



LEGEND

- HAND SOWN SEED OR HYDROSEED UNDER ROLLED EROSION CONTROL PRODUCT (USE DRY SEED APPLICATION FOR WETLAND EDGE SEED MIX IN WETLAND AREAS, AND HYDROSEED APPLICATION FOR EMBANKMENT SEED MIX IN NON-WETLAND AREAS)
- TEMPORARY SILT FENCE
- FIBER ROLL
- TEMPORARY TACKED STRAW

NOTES:

1. SEE PLAN AND PROFILE SHEETS FOR ADDITIONAL INFORMATION ON TEMPORARY SILT FENCE LOCATION.

NOTE: THIS SHEET IS ACCURATE FOR EROSION CONTROL ONLY



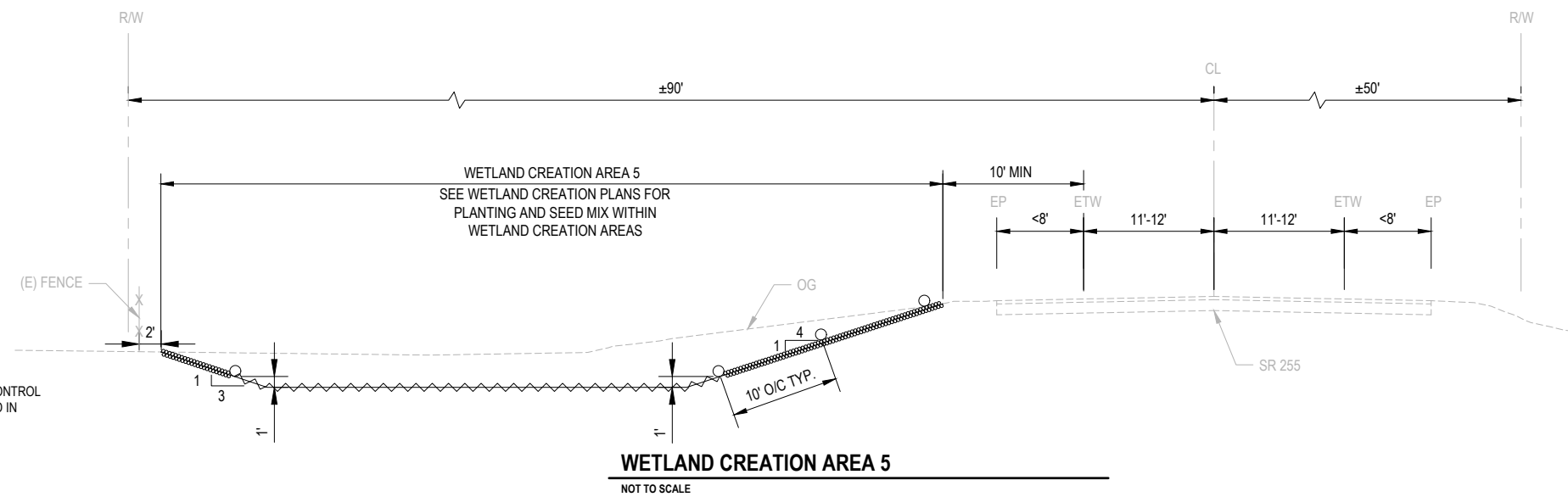
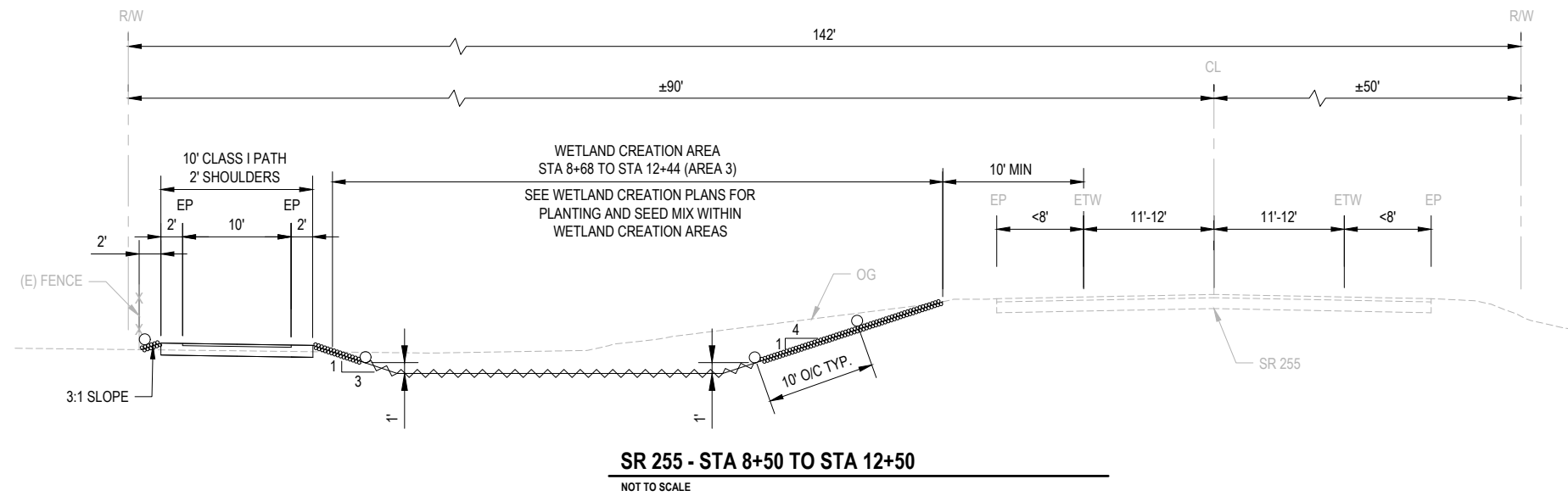
GHD Inc.
718 Third Street
Eureka California 95501 USA
T 1 707 443 8326 F 1 707 444 8330 W www.ghd.com



BAR IS ONE INCH ON ORIGINAL DRAWING
IF NOT ONE INCH ON THIS SHEET, ADJUST SCALES ACCORDINGLY

ROAD NAME: SR 255	DESIGN SECTION ENVIRONMENTAL
MILE POST: 3.64-3.96	DESIGNED BY: J.WOLF
PROJECT NO.: ATPL-5904(151)	DRAWN BY: O.GOODIE
CONTRACT NO.: 715112	REVIEWED BY: J.SVEHLA
PLOT DATE: 10/21/2021	APPROVED BY: J.WOLF

COUNTY OF HUMBOLDT DEPARTMENT OF PUBLIC WORKS	SHEET 20 OF 21
MANILA HIGHWAY 255 SHARED USE PATH	
EROSION CONTROL	



LEGEND

- HAND SOWN SEED OR HYDROSEED UNDER ROLLED EROSION CONTROL PRODUCT (USE DRY SEED IN WETLAND AREAS, AND HYDROSEED IN NON-WETLAND AREAS)
- TEMPORARY SILT FENCE
- FIBER ROLL
- TEMPORARY TACKED STRAW

NOTES:

1. SEE PLAN AND PROFILE SHEETS FOR ADDITIONAL INFORMATION ON TEMPORARY SILT FENCE LOCATION.

NOTE: THIS SHEET IS ACCURATE FOR EROSION CONTROL ONLY



GHD Inc.
718 Third Street
Eureka California 95501 USA
T 1 707 443 8326 F 1 707 444 8330 W www.ghd.com

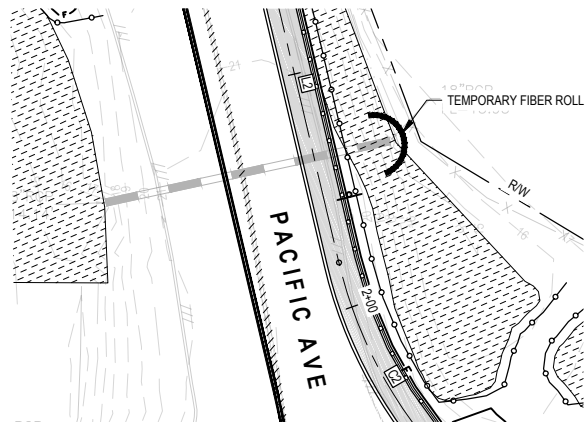


BAR IS ONE INCH ON ORIGINAL DRAWING
IF NOT ONE INCH ON THIS SHEET, ADJUST SCALES ACCORDINGLY

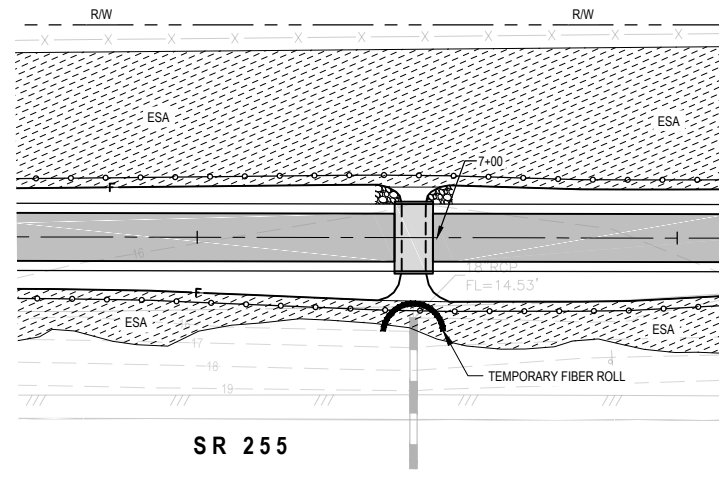
ROAD NAME:	SR 255
MILE POST:	3.64-3.96
PROJECT NO.:	ATPL-5904(151)
CONTRACT NO.:	715112
PLOT DATE:	10/21/2021

DESIGN SECTION	ENVIRONMENTAL
DESIGNED BY:	J.WOLF
DRAWN BY:	O.GOODIE
REVIEWED BY:	J.SVEHLA
APPROVED BY:	J.WOLF

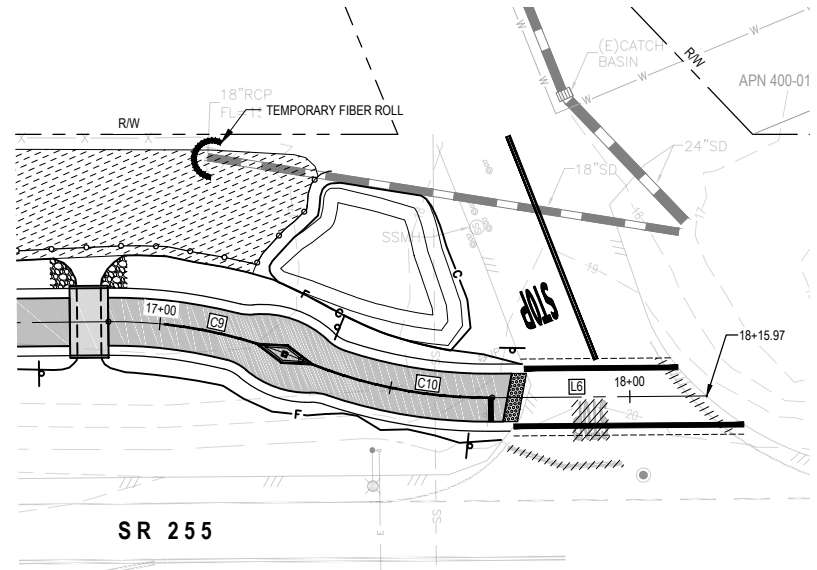
COUNTY OF HUMBOLDT	SHEET
DEPARTMENT OF PUBLIC WORKS	
MANILA HIGHWAY 255 SHARED USE PATH	OF
TEMPORARY EROSION CONTROL	21



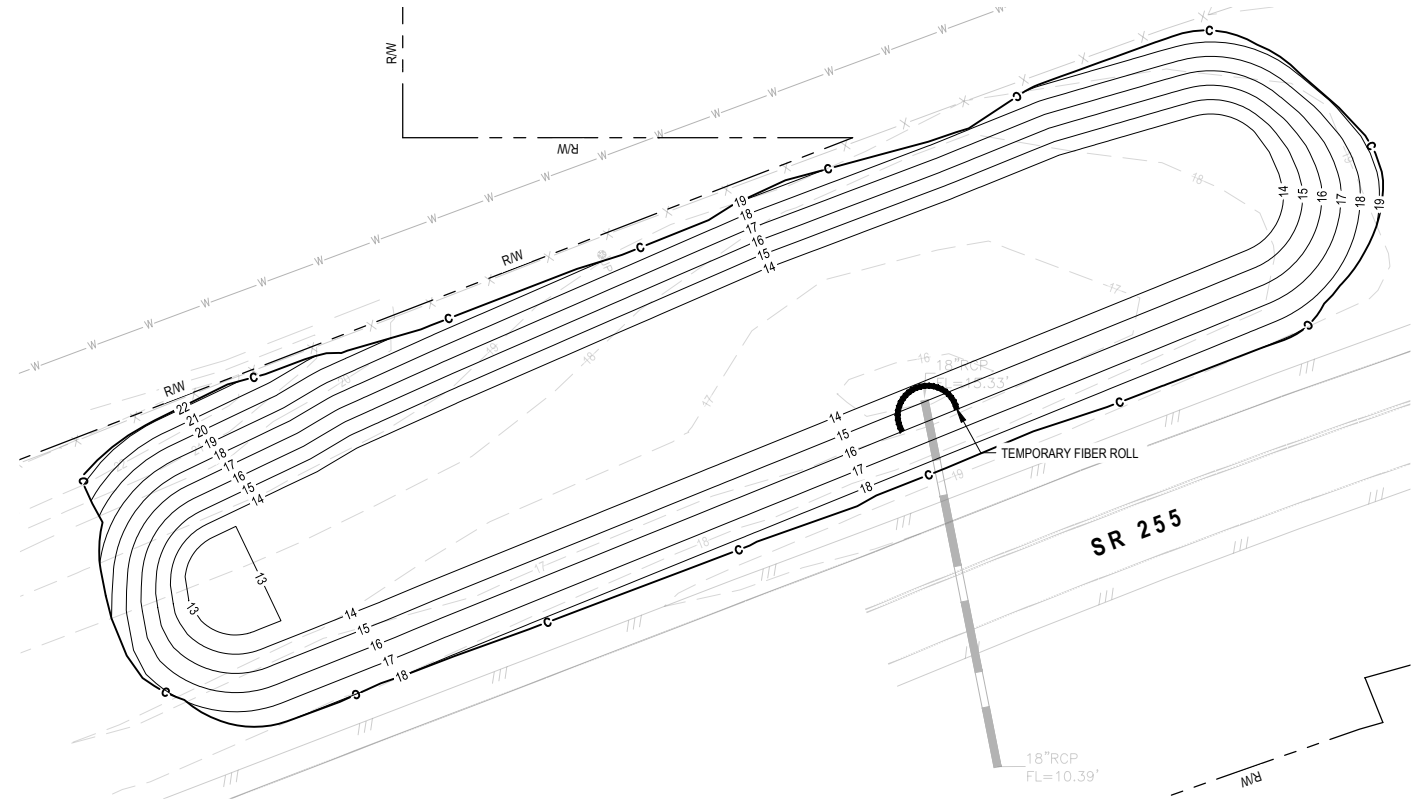
PLAN STA 1+26 TO 2+29



PLAN STA 6+20 TO 7+60



PLAN STA 16+72 TO 18+15.97



PLAN: AREA 5

LEGEND

- TEMPORARY SILT FENCE
- TEMPORARY FIBER ROLL (TYPE 2)

NOTES:

1. NOT ALL EROSION CONTROL FEATURES SHOWN ON THIS SHEET. SEE SHEET 19 AND 20 FOR ADDITIONAL INFORMATION ON EROSION CONTROL.
2. SEE PLAN AND PROFILE SHEETS FOR ADDITIONAL INFORMATION ON TEMPORARY SILT FENCE LOCATION.