

## **Attachment G**

### **Parcels Which are Zoned to Principally Permit Emergency Shelters**

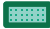


Attachment G of Appendix G will be removed as part of the housing program H-IM54 for the amendment of the Zoning Regulations to eliminate the “where specifically mapped” qualifying language for emergency shelters. See H-IM54 in Chapter 8 for more information.

# McKinleyville

## General Plan Housing Element

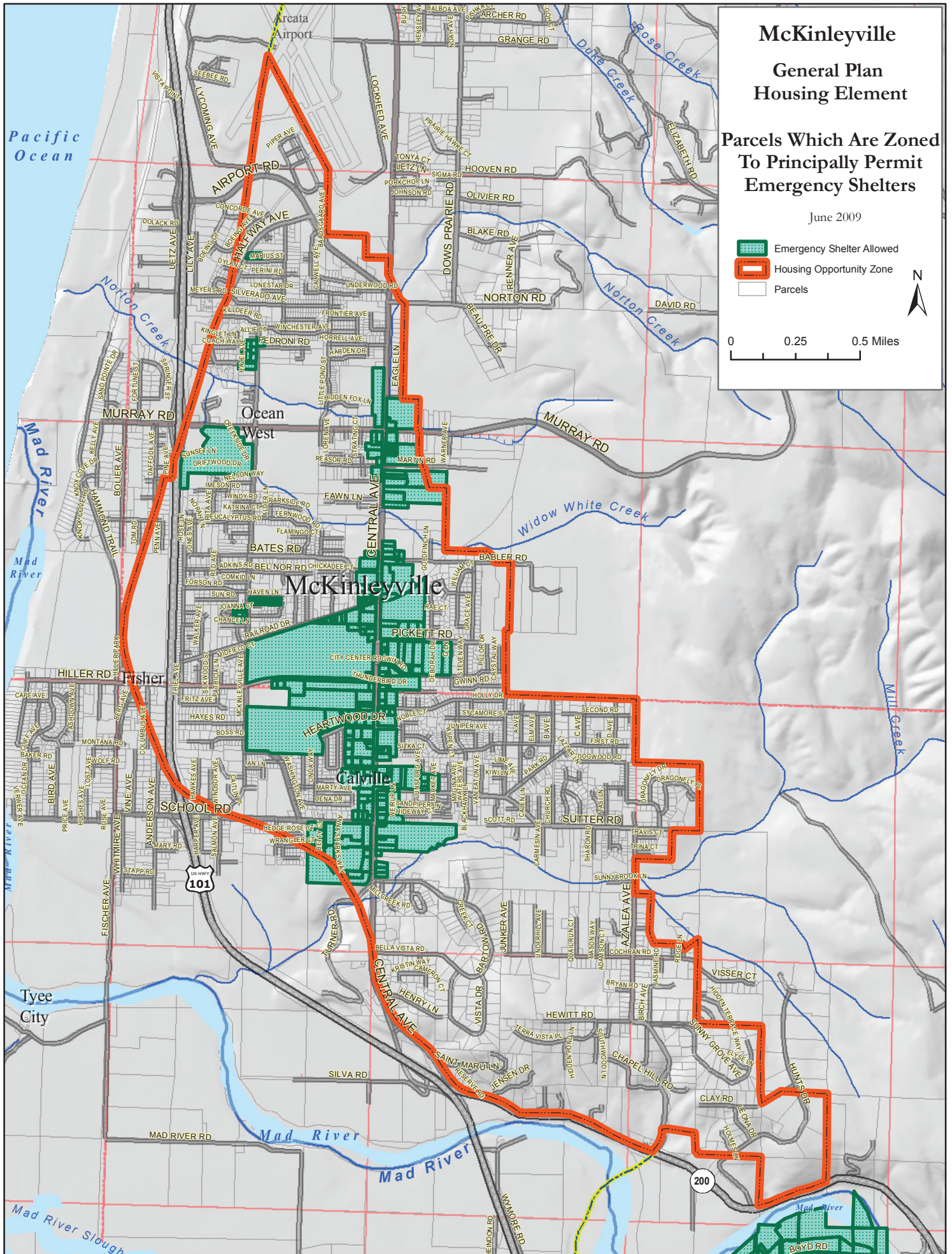
### Parcels Which Are Zoned To Principally Permit Emergency Shelters

June 2009

-  Emergency Shelter Allowed
-  Housing Opportunity Zone
-  Parcels



0 0.25 0.5 Miles








# Eureka South General Plan Housing Element

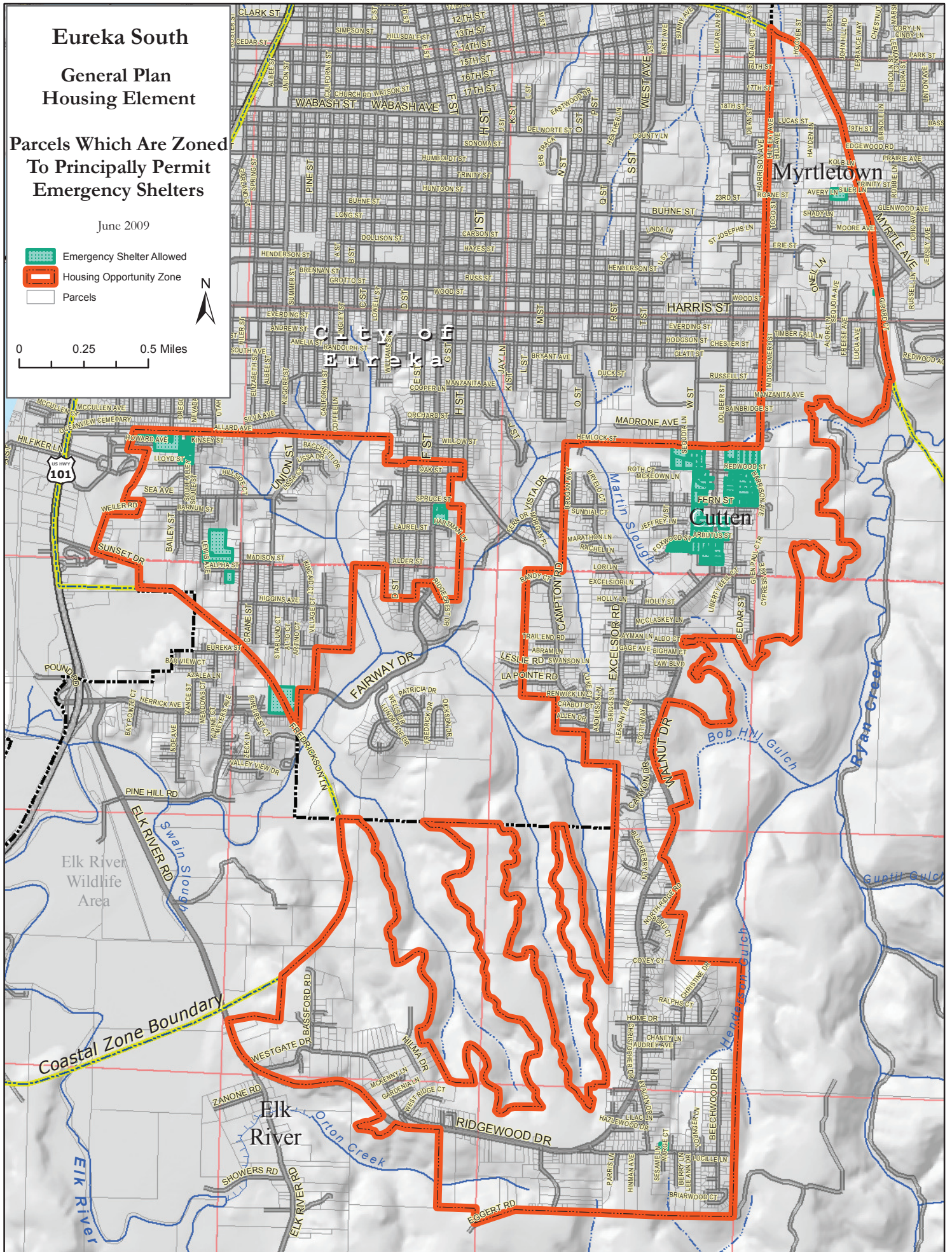
## Parcels Which Are Zoned To Principally Permit Emergency Shelters

June 2009

-  Emergency Shelter Allowed
-  Housing Opportunity Zone
-  Parcels



0 0.25 0.5 Miles








# Humboldt Hill

## General Plan Housing Element

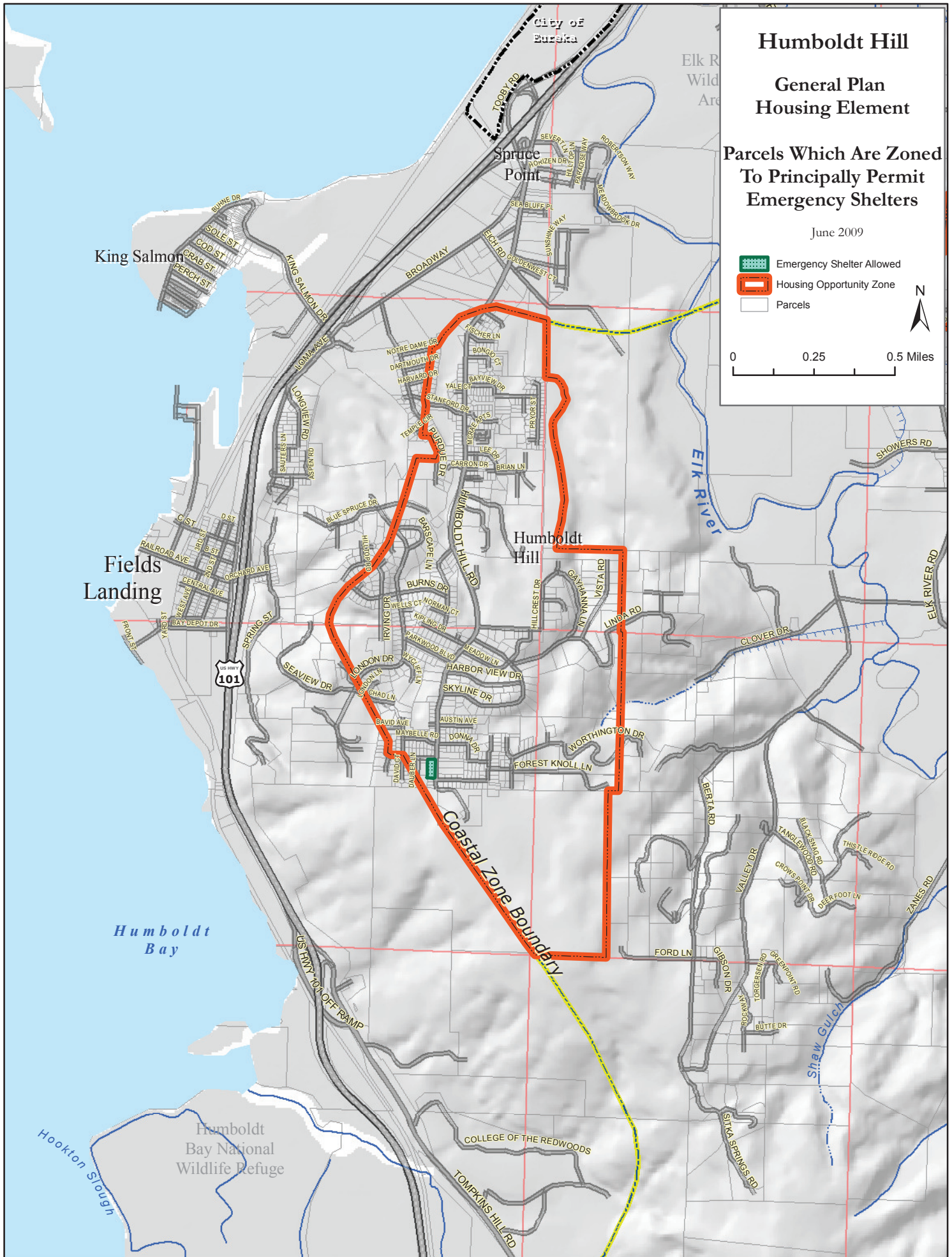
### Parcels Which Are Zoned To Principally Permit Emergency Shelters

June 2009

-  Emergency Shelter Allowed
-  Housing Opportunity Zone
-  Parcels



0 0.25 0.5 Miles








# Weott

## General Plan Housing Element

### Parcels Which Are Zoned To Principally Permit Emergency Shelters

June 2009

-  Emergency Shelter Allowed
-  Housing Opportunity Zone
-  Parcels



0 0.25 0.5 Miles

