




COUNTY OF HUMBOLDT

AGENDA ITEM NO.
C36

For the meeting of: June 26, 2018

Date: June 15, 2018

To: Board of Supervisors

From:  Thomas K. Mattson, Public Works Director

Subject: Support Letter for Annie & Mary Trail Phase 2 Funding Application and Supplemental Budget for Bicycles and Trailways Program (1710715) – (4/5 Vote Required)

RECOMMENDATION(S):

That the Board of Supervisors:

1. Authorize the chair to sign the attached support letter, and
2. Approve the following supplemental budget for Fiscal Year (FY) 2017-18 (4/5 vote required):

Revenue:	1710715-707256	Local Grants	\$15,000
Expenditure:	1710715-8945	Annie & Mary Trail	\$15,000

SOURCE OF FUNDING: Friends of Annie & Mary Rail-Trail

DISCUSSION:

The Annie & Mary Trail is a proposed network of bicycle and pedestrian facilities connecting the cities of Arcata and Blue Lake. The trail would generally follow the Mad River and former Arcata & Mad

Prepared by Hank Seemann, Deputy-Director CAO Approval 

REVIEW: Auditor  County Counsel _____ Human Resources _____ Other _____

TYPE OF ITEM:
 Consent
 Departmental
 Public Hearing
 Other _____

PREVIOUS ACTION/REFERRAL:

Board Order No. _____

Meeting of: _____

BOARD OF SUPERVISORS, COUNTY OF HUMBOLDT
Upon motion of Supervisor Bass Seconded by Supervisor Fennell
Ayes Bass, Fennell, Sandberg, Bohn
Nays _____
Abstain _____
Absent Wilson

and carried by those members present, the Board hereby approves the recommended action contained in this Board report.

Dated: 6/26/18
By: 
Kathy Hayes, Clerk of the Board

River Railroad Company corridor, with alternative alignments as needed based on constraints. The Annie & Mary Trail is a collaborative effort between Humboldt County, City of Blue Lake, City of Arcata, Caltrans, Humboldt County Association of Governments, Blue Lake Rancheria, Redwood Community Action Agency, and Friends of the Annie & Mary Rail-Trail.

In 2017, the City of Blue Lake was awarded funding from the Active Transportation Program to construct the first phase of the Annie & Mary Trail, along the north side of Railroad Avenue from Chartin Road to H Street. The goal is to construct this trail segment in 2020.

Public Works collaborated with Friends of the Annie & Mary Rail-Trail to develop preliminary design plans for a trail connection between Blue Lake and Glendale. The proposed project is a paved bikepath that would begin at Chartin Road in Blue Lake, follow the former railroad grade to Highway 299, then extend parallel to Highway 299 before connecting to Glendale Drive, for a total length of approximately 1.7 miles. A project area map is provided in Attachment 1.

Caltrans has agreed to be the applicant to the Active Transportation Program for funding to implement this project, which is considered Phase 2 of the Annie & Mary Trail. Applications are due July 31, 2018. A support letter is provided in Attachment 2.

The Fiscal Year 2017-18 budget includes \$35,000 for the preliminary design plans for the Phase 2 project. Friends of the Annie & Mary Rail-Trail committed a cost-share of \$15,000 (Attachment 3). The recommended supplemental budget incorporates the cost-share funds into the FY 2017-18 budget.

FINANCIAL IMPACT:

The proposed action will not impact the Humboldt County General Fund.

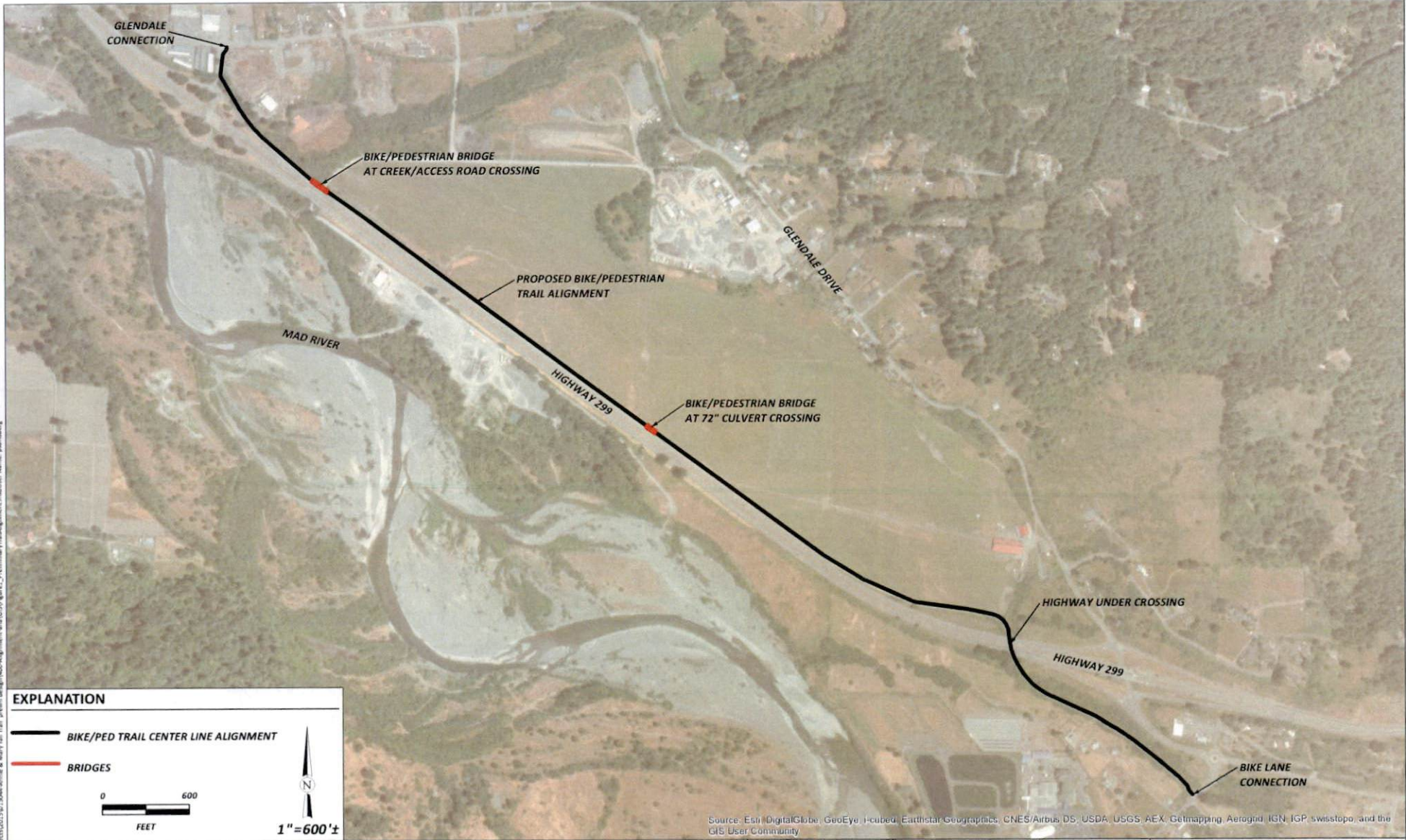
The requested action conforms to the Board of Supervisors Strategic Framework by providing for and maintaining infrastructure, managing resources to ensure sustainability of services and partnering to promote quality services.

OTHER AGENCY INVOLVEMENT: City of Blue Lake, City of Arcata, Caltrans, Humboldt County Association of Governments, Blue Lake Rancheria

ALTERNATIVES TO STAFF RECOMMENDATIONS: The Board could choose not to approve the supplemental request; however, this is not recommended because these funds cover costs that have been expended.



ATTACHMENTS:



1. Preliminary Trail Alignment (January 2018)
2. Support Letter
3. Letter (August 30, 2017) from Friends of the Annie & Mary Rail-Trail



Path: \\server\projects\2015\15044-Annie & Mary Trail - prelim design\F00-Alignment and GIS\figure1_PreliminaryTrailAlignment.mxd; User: psandberg

EXPLANATION

 BIKE/PED TRAIL CENTER LINE ALIGNMENT
 BRIDGES

 0 600 FEET
 N
 1" = 600' ±

Source: Esri | DigitalGlobe, GeoEye, i-cubed, Earthstar Geographics, CNES/Airbus DS, USDA, USGS, AEX, Getmapping, Aerogrid, IGN, IGP, swisstopo, and the GIS User Community



Friends of Annie & Mary Trail
 Annie & Mary Trail-Blue Lake to Glendale
 Blue Lake, California
 January 2018

Preliminary Trail Alignment
 SHN 015044-000
 Figure 1



**BOARD OF SUPERVISORS
COUNTY OF HUMBOLDT**

825 5th Street, Suite 111, Eureka, CA 95501-1153
Telephone (707) 476-2390 Fax (707) 445-7299

June 26, 2018

CALTRANS
Division of Local Assistance
1120 N Street, MS 1
Attn: Office of State Programs
Sacramento, CA 95814

Re: Support for Blue Lake to Glendale Annie & Mary Trail, Phase 2 Project

Dear Application Review Committee:

The County of Humboldt enthusiastically supports the "Blue Lake to Glendale Annie & Mary Trail, Phase 2" application submitted to the Active Transportation Program (ATP) by Caltrans District 1. The Annie & Mary Trail will ultimately connect the City of Blue Lake to the communities of Humboldt Bay with a continuous non-motorized path when all phases are complete.

Partnerships are critical to achieve ambitious regional projects that cross jurisdictional boundaries. The City of Arcata, City of Blue Lake, Humboldt County Association of Governments, and Blue Lake Rancheria are key governmental partners on the Annie & Mary Trail. We appreciate how Caltrans recognized the regional importance of the Annie & Mary Trail and stepped forward to implement the phase of the trail situated along Highway 299. Completion of this project will be a major achievement for Caltrans in achieving its Complete Streets mandate and enhancing safety and mobility on the state highway system in District 1.

As a project with decades of community support, the Annie & Mary Trail is supported by many community-based organizations who have helped move the trail planning forward, including the Friends of the Annie & Mary Rail Trail, Redwood Community Action Agency, the Mad River Old Crows, Blue Lake School District, and many local businesses and residents of the communities of Blue Lake, Glendale and Arcata. The County of Humboldt has invested significantly in the Annie & Mary Trail by funding right-of-way research and analysis, planning and community engagement support, and preliminary engineering and technical studies. Community engagement work over the last several years directly informed and improved the Phase 2 project design, by shifting the proposed alignment away from the rail corridor that runs through active industrial operations and private backyards to the edge of the state highway right-of-way. This adjustment will avoid driveway crossing conflicts and impacts to a residential area.

Safe, multi-use trails enable families and youth to create routines for active, healthy living and provide options for transportation and recreation. The Humboldt County Board of Supervisors is pleased to support the Blue Lake Annie & Mary Trail, Phase 2 and encourages your fiscal support of this exceptional project.

Sincerely,

Ryan Sundberg, Chair
Humboldt County Board of Supervisors



Friends of the Annie & Mary Rail-trail
P.O. Box 804
Blue Lake, CA 95525
August 30, 2017

Mr. Hank Seemann
Deputy Director – Environmental Services
Humboldt County Public Works Department
1106 Second Street
Eureka, CA 95501

RE: Annie & Mary Trail: Blue Lake to Glendale Preliminary Design, Project Number 715315

Dear Mr. Seemann,

The Friends of the Annie & Mary Rail-trail (A&M) would like to thank the County for its support of the Annie & Mary Rail-trail. While this is the next step, this step is critical in realizing non-motorized trail connectivity from Blue Lake to Arcata and regional trails beyond including: Humboldt Bay and Hikshari trails to the south and Hammond Trail to the north.

In support of the A&M Rail-trail moving forward toward a regional trail system, the Friends of A&M will commit \$15,000 to support the completion of the preliminary design.

If you have any questions, please do not hesitate to contact us at 668-5066.

Again, thank you.

Ingrid Kosek
Friends of A&M