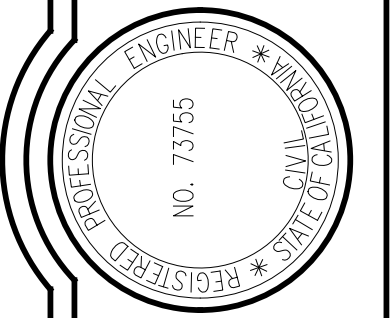


REVISIONS	BY



WHITCHURCH ENGINEERING, INC.
 610 9th Street, Fortuna, California 95540
 Phone (707) 725-8926

ACV EVS & ADA MODIFICATION PROJECT
 3561 Boeing Ave, McKinleyville, CA 95519
EXISTING CONDITION & DEMOLITION PLAN
 County of Humboldt

Date	AUG 3 '21
Scale	AS NOTED
Design	DPT
Drawn	SPD
Job	HCO 2001.2
Sheet	2

LEGEND

- SURVEY CONTROL POINT
- EXISTING BUILDING
- EXISTING GRADE
- CONCRETE
- LANDSCAPE/GRASS
- DEMO AC AREAS

ABBREVIATIONS

- AC - ASPHALT CONCRETE
- BLDG. - BUILDING
- CC/CONC - CONCRETE
- CP - CONTROL POINT
- CW - CROSSWALK
- FF - FINISHED FLOOR
- FL - FLOWLINE
- TC - TOP OF CURB

TOPOGRAPHIC SURVEY NOTES

- THIS IS NOT A BOUNDARY SURVEY. NO LIABILITY IS ASSUMED BY WHITCHURCH ENGINEERING, INC. FOR THE EXISTENCE OF ANY EASEMENTS, ENCUMBRANCES AND DISCREPANCIES IN BOUNDARY OR TITLE DEFECTS.
- PHYSICAL ITEMS SHOWN ON THIS TOPOGRAPHIC SURVEY ARE LIMITED TO THOSE ITEMS VISIBLE BY SURFACE INSPECTION AS OF THE DATE OF THIS SURVEY. SUBSURFACE STRUCTURES, IF ANY, ARE NOT SHOWN.
- THE TYPES, LOCATIONS, SIZES AND/OR DEPTHS OF EXISTING UNDERGROUND UTILITIES AS SHOWN ON THIS TOPOGRAPHIC SURVEY WERE OBTAINED FROM SURFACE FEATURES AND SOURCES OF VARYING RELIABILITY. ONLY ACTUAL EXCAVATION WILL REVEAL THE TYPES, EXTENT, SIZES, LOCATIONS AND DEPTHS OF SUCH UNDERGROUND UTILITIES. WHITCHURCH ENGINEERING, INC. ASSUMES NO RESPONSIBILITY FOR THE COMPLETENESS OR ACCURACY OF THE DELINEATION OF SUCH UNDERGROUND UTILITIES WHICH MAY BE ENCOUNTERED.
- BENCHMARK: ASSUMED ELEVATION AND POSITION AT CP-1 ELEVATION=5000.00' (HUB IN GROUND).
- FIELD SURVEY COMPLETED ON (DATE): 6-10-21

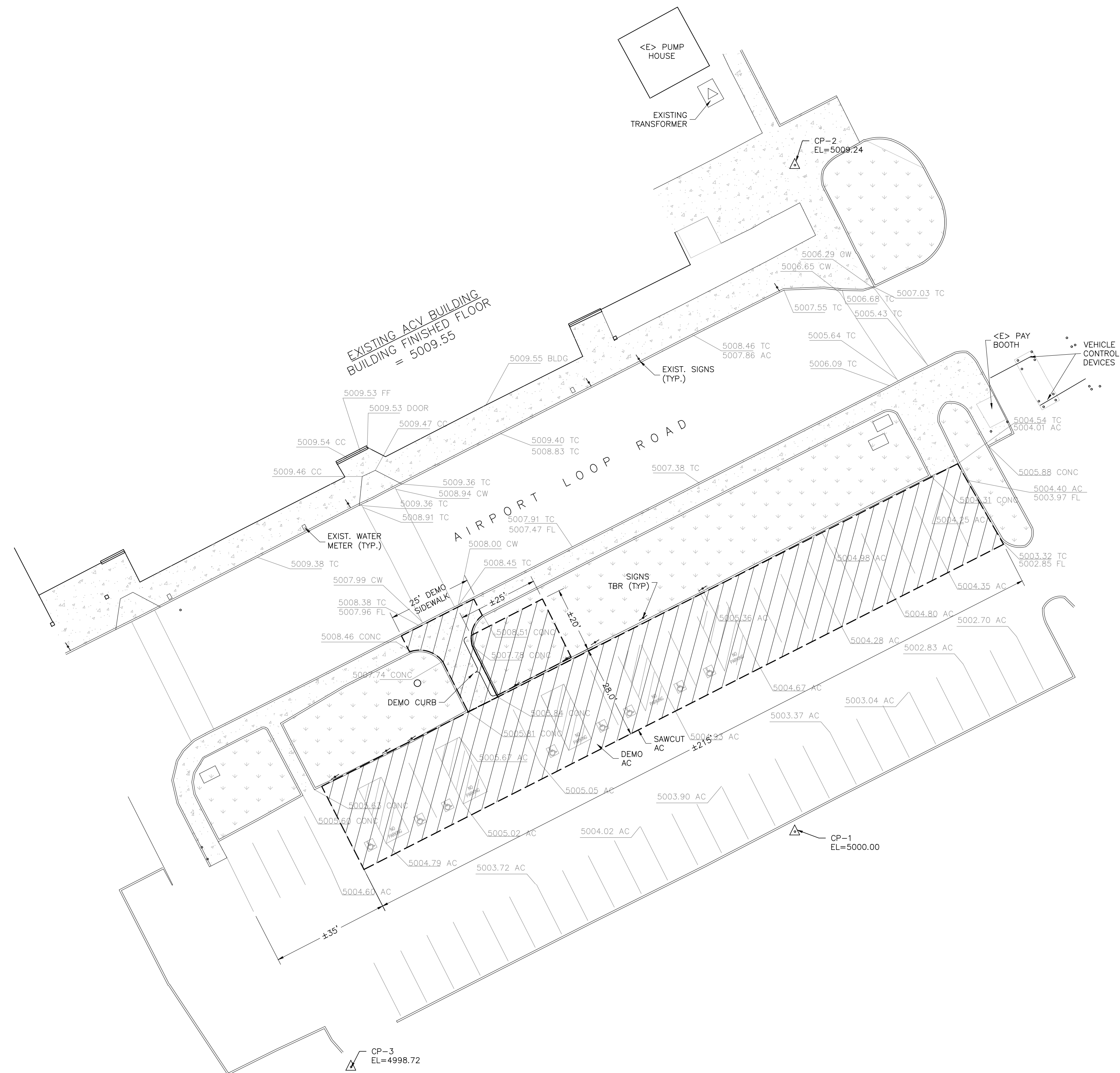
CONTROL POINT DATA				
POINT #	NORTHING	EASTING	ELEVATION(FT)	DESCRIPTION
1	10000.000	10000.000	5000.00	HUB IN GROUND
2	10199.4600	10000.000	5009.24	MAG NAIL IN CONC.
3	9929.574	9867.121	4998.72	MAG NAIL IN AC

ESTIMATES OF WASTE

ASPHALTIC CONCRETE WASTE±1,500 CU FT
 CONCRETE: ±132 CU FT
 SOIL: ±500 CU FT
 DATUM FOR ELEVATIONS IS ASSUMED TOPOGRAPHIC SPOT ELEVATIONS SHOWN

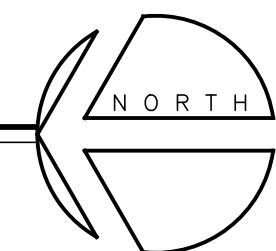
WASTE NOTES

- CONCRETE/ASPHALTIC CONCRETE WASTE, SOILS WASTE, PLANT WASTE TO BE DISPOSED OF AT AN APPROPRIATE FACILITY. CONTRACTOR TO MAINTAIN RECORDS OF DISPOSAL.
- FOLLOW EROSION CONTROL BEST MANAGEMENT PRACTICES FOR DUST CONTROL DURING DEMOLITION WORK.

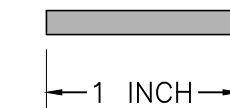


EXISTING CONDITION AND DEMOLITION PLAN

SCALE: 1"=20'

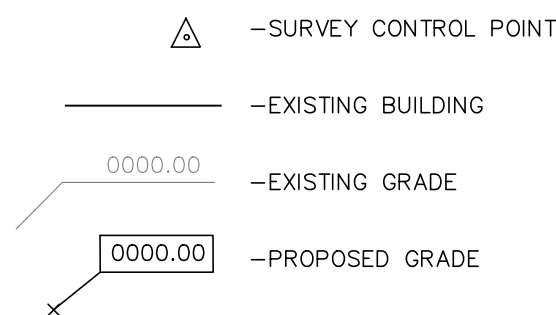


THESE PLANS ARE ORIGINALLY PRINTED ON 22"x34" PAPER.



This drawing or drawing set shall not be used for construction unless a jurisdictional stamp (County, City, State, Federal) has been issued on the drawing, stating "FOR PERMIT" or similar verbiage, a wet signed professional engineer's stamp, and permit documents have been issued for the project.

LEGEND



- NOTES:
 1. STRAIGHT GRADE FROM FINISHED GRADES SHOWN
 2. DATUM IS ASSUMED
 3. TEMPORARY BENCHMARK - CP-1 @ 5000.00 EL

ABBREVIATIONS

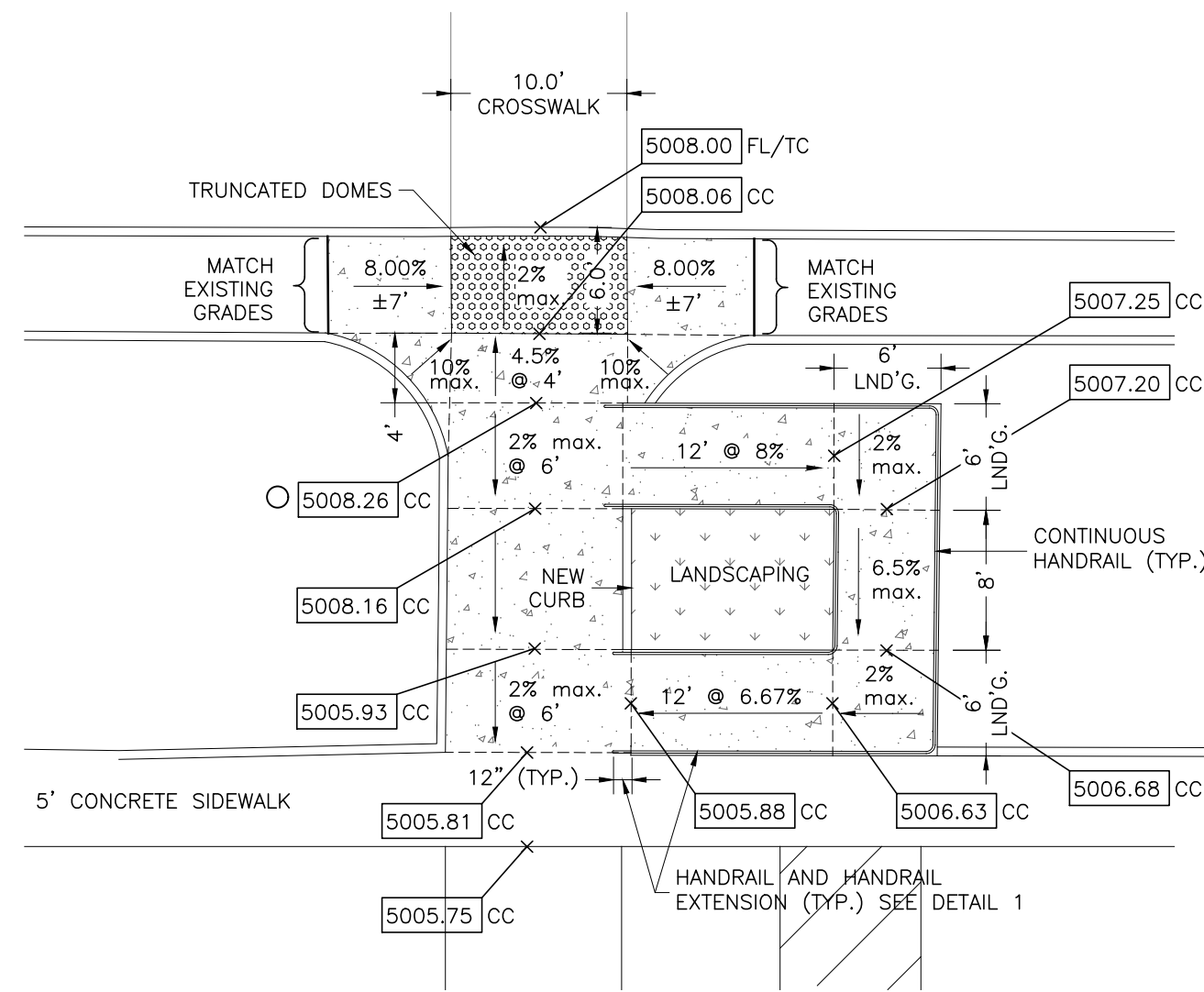
- AC - ASPHALT CONCRETE
- BLDG. - BUILDING
- CC/CONC - CONCRETE
- C.P. - CONTROL POINT
- CW - CROSSWALK
- F.F. - FINISHED FLOOR
- FL - FLOWLINE
- TC - TOP OF CURB

SITE ACCESSIBILITY NOTES

- ACCESSIBLE PATHS OF TRAVEL:
- ABRUPT CHANGES IN LEVEL SHALL NOT EXCEED 1/2". CHANGES IN LEVEL UP TO 1/4" MAY BE VERTICAL. CHANGES IN LEVEL BETWEEN 1/4" AND 1/2" SHALL BE BEVELED WITH A SLOPE NO GREATER THAN 1 UNIT VERTICAL FOR 2 UNITS HORIZONTAL. WHEN CHANGES IN LEVEL GREATER THAN 1/2" ARE NECESSARY THEY SHALL COMPLY WITH THE PROVISIONS FOR CURB RAMPS. SEE CBC 11278.5
 - SHALL BE A MINIMUM OF 48" IN WIDTH.
 - SURFACES WITH A SLOPE OF LESS THAN 6% SHALL BE AS SLIP RESISTANT AS THAT DESCRIBED AS A MEDIUM SALTED FINISH.
 - SURFACES OF A SLOPE GREATER THAN 6% SHALL BE SLIP RESISTANT.
 - CROSS SLOPE GROUND SHALL NOT EXCEED 1/4" PER FOOT.
 - WHEN THE SLOPE IN THE DIRECTION OF TRAVEL EXCEEDS 5% THE PATH SHALL COMPLY WITH THE PROVISIONS FOR RAMPS. SEE CBC11B-405.
 - SHALL BE FREE OF GRATINGS WHEREVER POSSIBLE. GRID OPENINGS IN GRATINGS SHALL BE LIMITED TO 1/2" IN THE DIRECTION OF TRAFFIC FLOW.
 - IF A WALK CROSSES OR ADJOINS A VEHICULAR WAY, AND THE WALKING SURFACES ARE NOT SEPARATED BY CURBS, RAILINGS OR OTHER ELEMENTS BETWEEN THE PEDESTRIAN AREAS AND VEHICULAR AREAS, THE BOUNDARY BETWEEN THE AREAS SHALL BE DEFINED BY A CONTINUOUS DETECTABLE WARNING WHICH IS 36 INCHES WIDE, COMPLYING WITH CBC11B-705

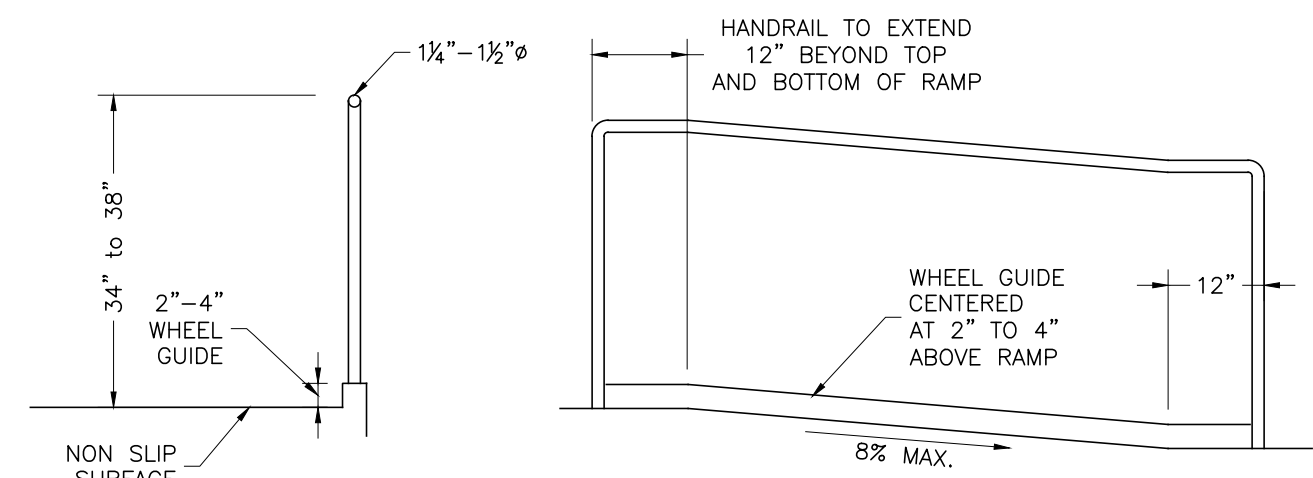
EV CHARGER NOTES

- 11B-812.8.7 LOCATION. REQUIRED IDENTIFICATION SIGNS SHALL BE VISIBLE FROM THE EVCS IT SERVES. SIGNS SHALL BE PERMANENTLY POSTED EITHER IMMEDIATELY ADJACENT TO THE VEHICLE SPACE OR WITHIN THE PROJECTED VEHICLE SPACE WIDTH AT THE HEAD END OF THE VEHICLE SPACE. SIGNS IDENTIFYING VAN ACCESSIBLE VEHICLE SPACES SHALL CONTAIN THE DESIGNATION "VAN ACCESSIBLE." SIGNS SHALL BE 60 INCHES (1525 MM) MINIMUM ABOVE THE FINISH FLOOR OR GROUND SURFACE MEASURED TO THE BOTTOM OF THE SIGN. SIGNS LOCATED WITHIN A CIRCULATION PATH SHALL BE 80 INCHES (2032 MM) MINIMUM ABOVE THE FINISH FLOOR OR GROUND SURFACE MEASURED TO THE BOTTOM OF THE SIGN. SIGNS MAY ALSO BE PERMANENTLY POSTED ON A WALL AT THE INTERIOR END OF THE VEHICLE SPACE.
- 1B-812.9 SURFACE MARKING. EVCS VEHICLE SPACES SHALL PROVIDE SURFACE MARKING STATING "EV CHARGING ONLY" IN LETTERS 12 INCHES (305 MM) HIGH MINIMUM. THE CENTERLINE OF THE TEXT SHALL BE A MAXIMUM OF 6 INCHES (152 MM) FROM THE CENTERLINE OF THE VEHICLE SPACE AND ITS LOWER CORNER AT, OR LOWER SIDE ALIGNED WITH, THE END OF THE VEHICLE SPACE LENGTH.
- 11B-812.10 ELECTRIC VEHICLE CHARGERS
- 11B-812.10.1 GENERAL. EV CHARGERS SHALL COMPLY WITH SECTION 11B-812.10.



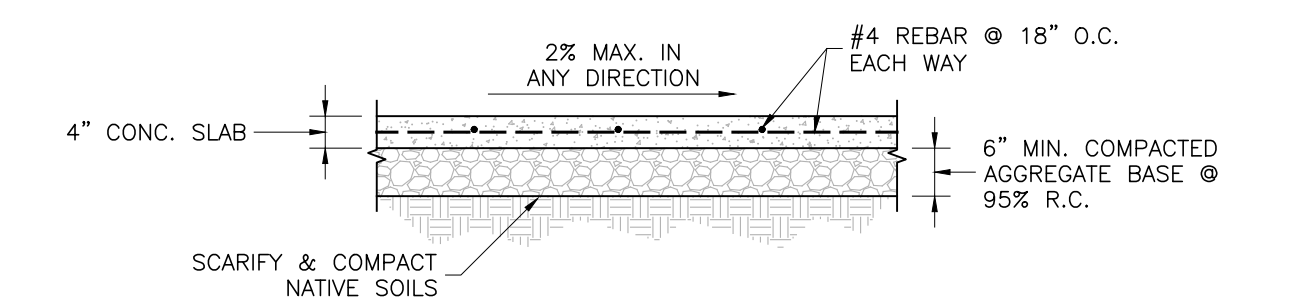
RAMP DETAIL (PLAN VIEW)

SCALE: 1"=10'



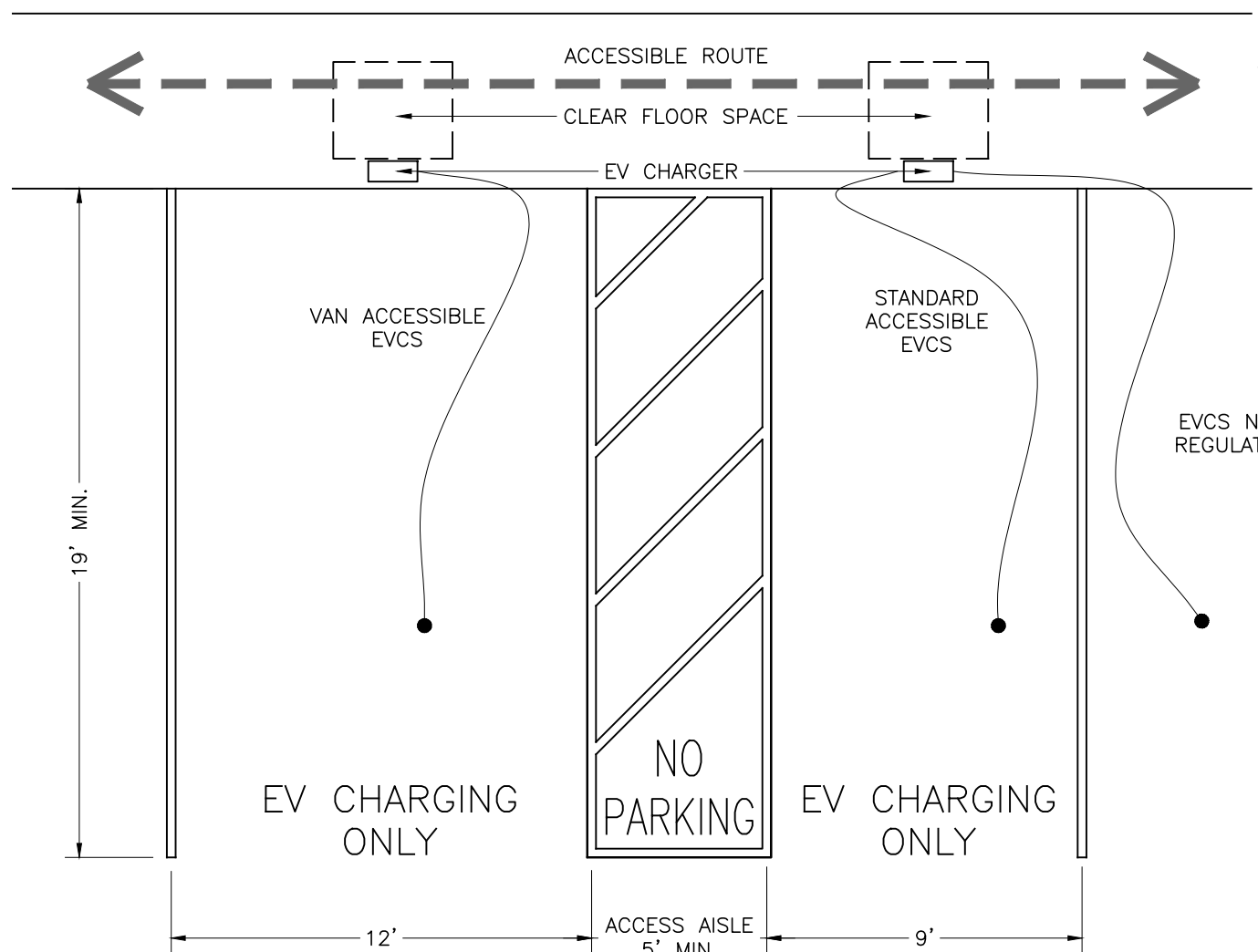
HANDRAIL AT RAMPS

NO SCALE



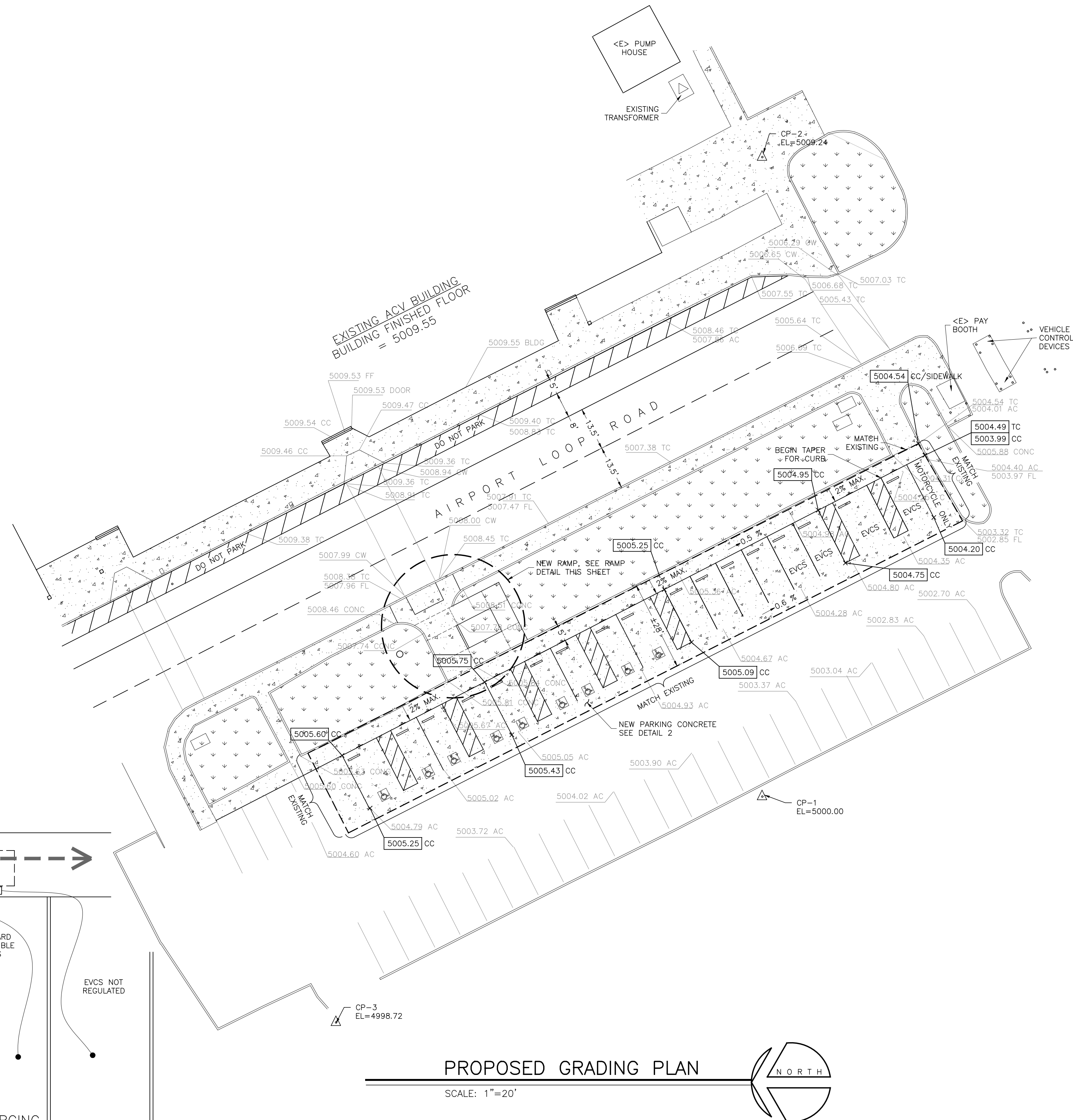
PARKING CONCRETE DETAIL

NO SCALE



EVC SURFACE MARKING

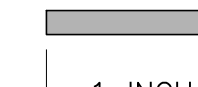
NO SCALE



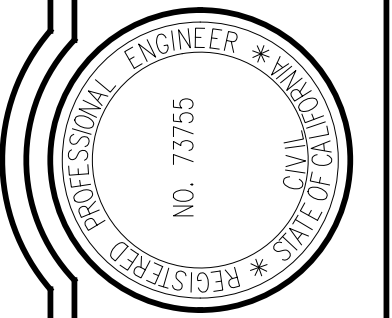
PROPOSED GRADING PLAN

SCALE: 1"=20'

THESE PLANS ARE ORIGINALLY PRINTED ON 22"x34" PAPER.



REVISIONS	BY



WHITCHURCH ENGINEERING, INC.
 610 9th Street, Fortuna, California 95540
 Phone (707) 725-6926

ACV EVS & ADA MODIFICATION PROJECT
 3561 Boeing Ave, McKinleyville, CA 95519
PROPOSED GRADING/ACCESSIBLE PARKING PLAN
 County of Humboldt

Date	AUG 3 '21
Scale	AS NOTED
Design	DPT
Drawn	GKK
Job	HCO 2001.2
Sheet	3

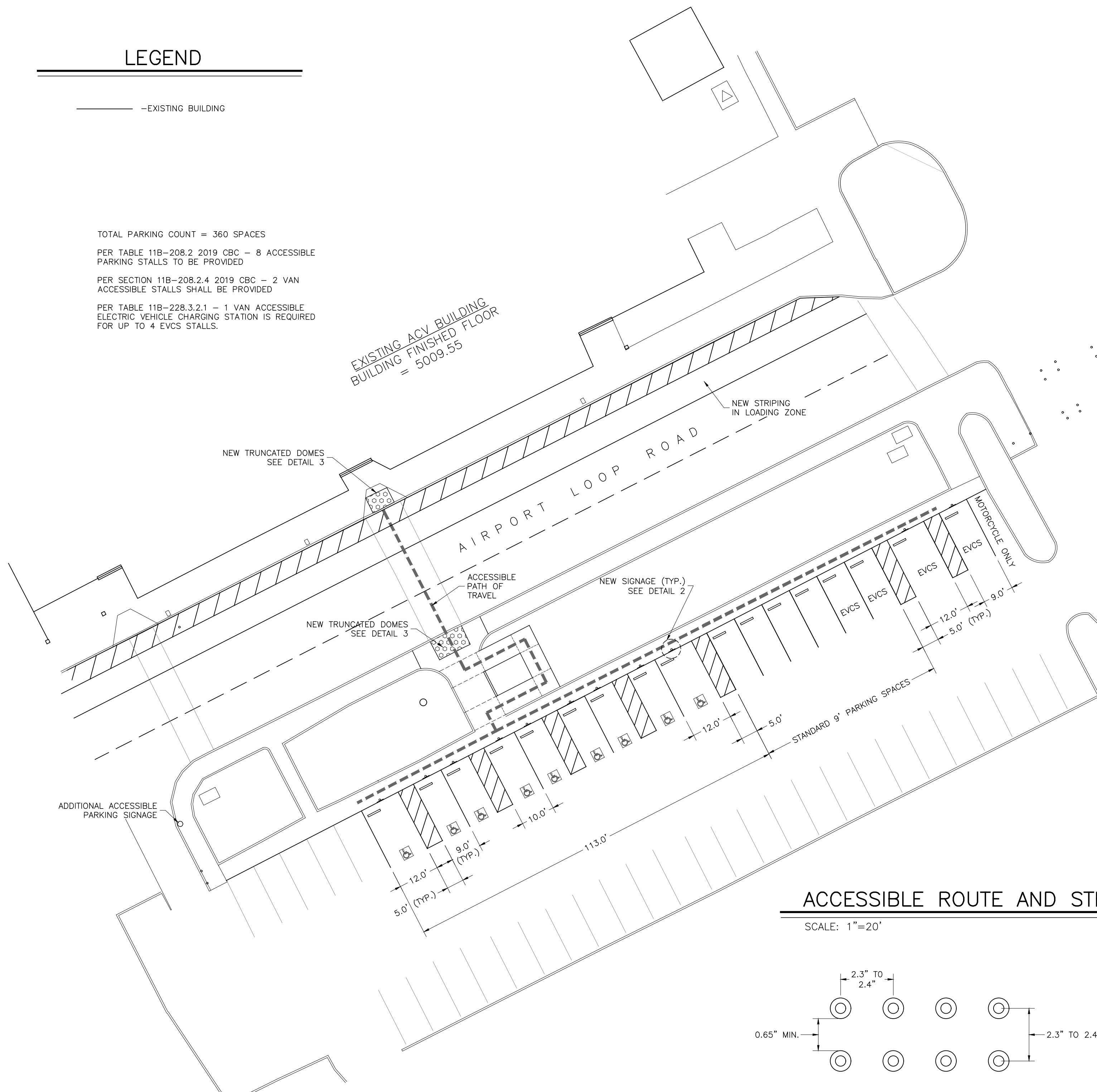
This drawing or drawing set shall not be used for construction unless a jurisdictional stamp (County, City, State, Federal) has been issued on the drawing, stating "FOR PERMIT" or similar verbiage, a wet signed professional engineer's stamp, and permit documents have been issued for the project.

LEGEND

— EXISTING BUILDING

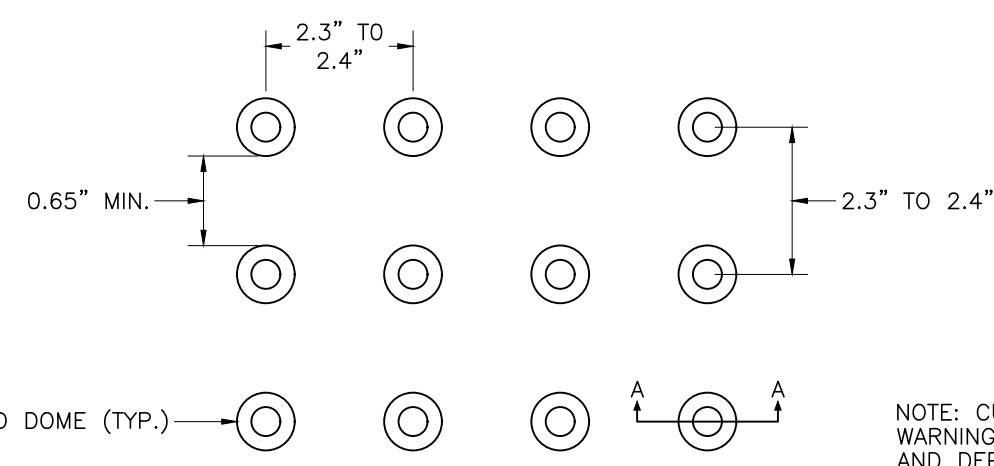
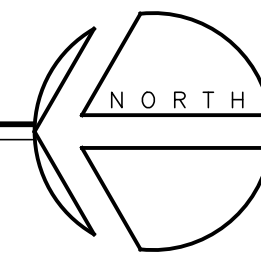
TOTAL PARKING COUNT = 360 SPACES
 PER TABLE 11B-208.2 2019 CBC - 8 ACCESSIBLE PARKING STALLS TO BE PROVIDED
 PER SECTION 11B-208.2.4 2019 CBC - 2 VAN ACCESSIBLE STALLS SHALL BE PROVIDED
 PER TABLE 11B-228.3.2.1 - 1 VAN ACCESSIBLE ELECTRIC VEHICLE CHARGING STATION IS REQUIRED FOR UP TO 4 EVCS STALLS.

EXISTING ACV BUILDING BUILDING FINISHED FLOOR = 5009.55



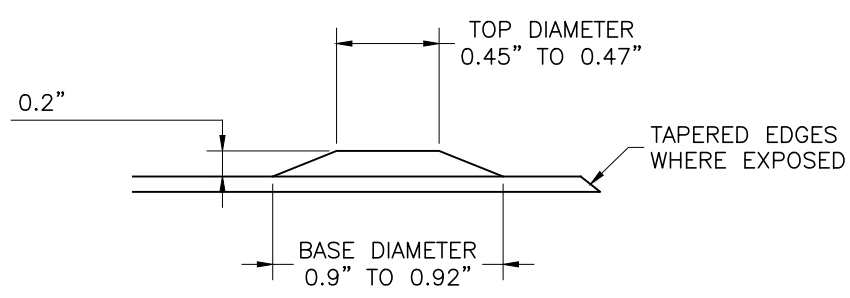
ACCESSIBLE ROUTE AND STRIPING PLAN

SCALE: 1"=20'



TYPICAL PLAN

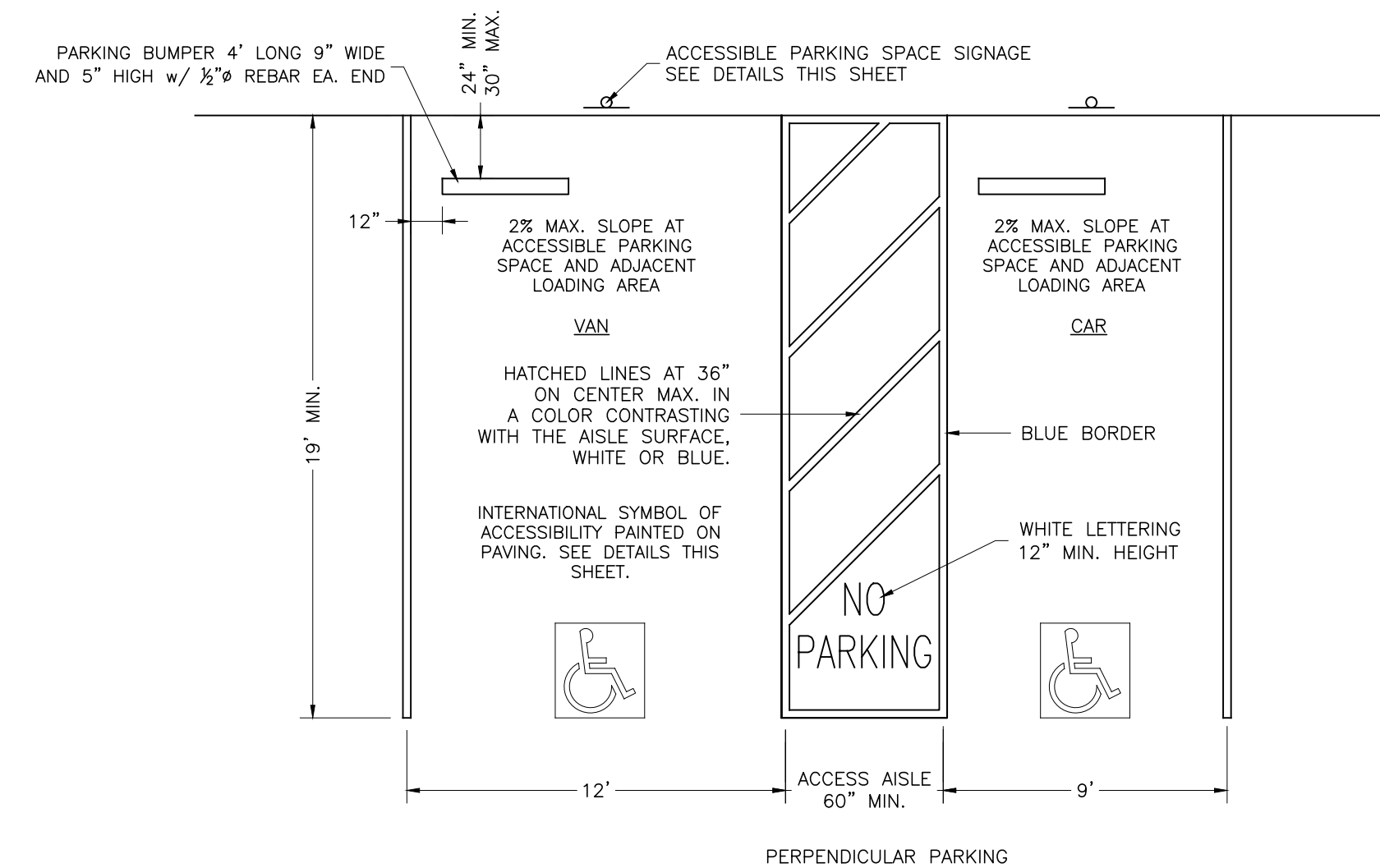
CURB RAMP DETECTABLE WARNING SURFACE PER SECTION 11B-705.1.2.2. DETECTABLE WARNINGS AT CURB RAMP SHALL EXTEND 36 INCHES IN THE DIRECTION OF TRAVEL. DETECTABLE WARNINGS SHALL EXTEND THE FULL WIDTH OF THE RAMP RUN LESS 2 INCHES MAXIMUM ON EACH SIDE. EXCLUDING FLARED SIDES, DETECTABLE WARNINGS SHALL BE LOCATED SO THE EDGE NEAREST THE CURB IS 6 INCHES MINIMUM AND 8 INCHES MAXIMUM FROM THE LINE AT THE FACE OF THE CURB MARKING THE TRANSITION BETWEEN THE CURB AND THE GUTTER, STREET OR HIGHWAY.



TYPICAL SECTION A-A

TRUNCATED DOMES DETAIL

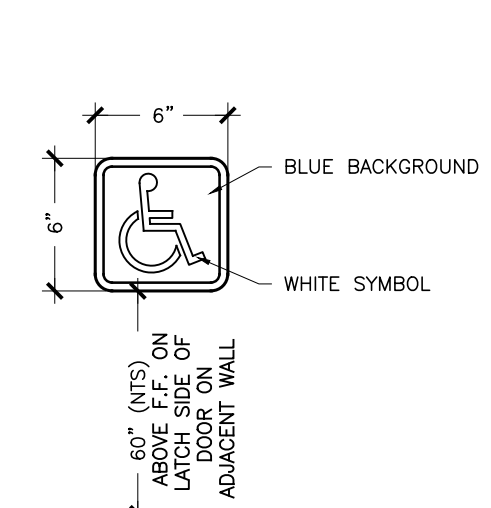
NO SCALE



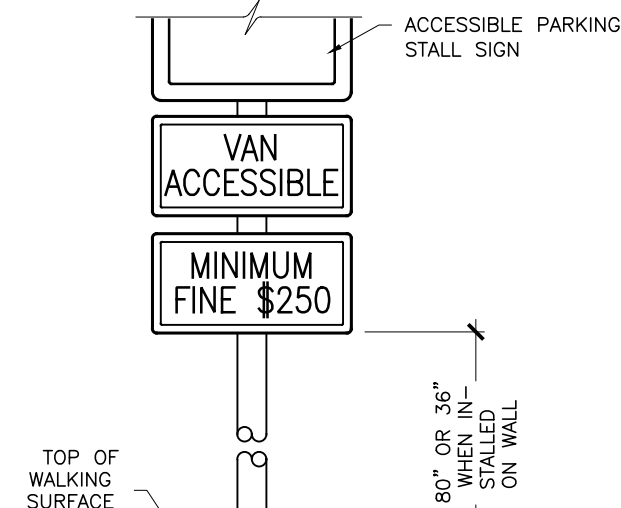
PERPENDICULAR PARKING

1 TYPICAL ADA PARKING SPACE DETAIL

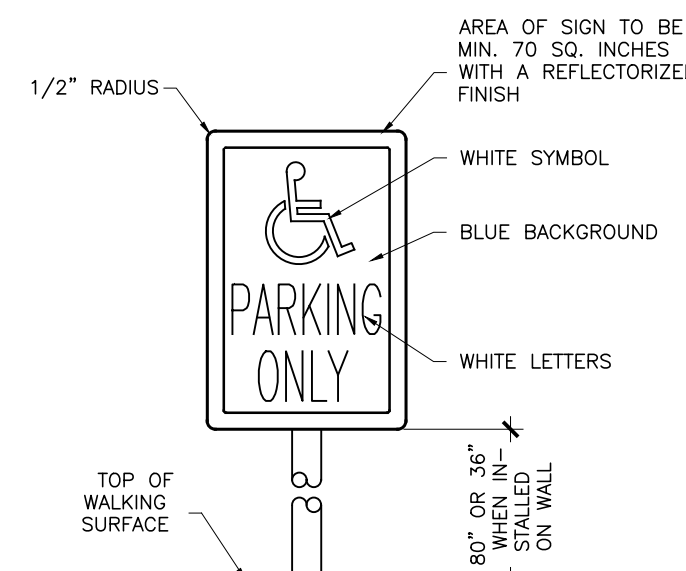
NO SCALE PER CBC 11B 502.2



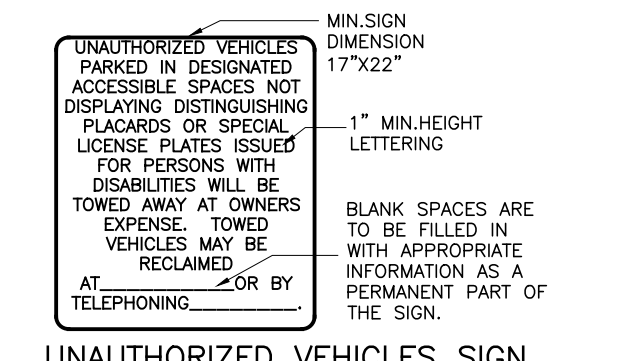
ACCESSIBLE BUILDING ENTRANCE SIGN



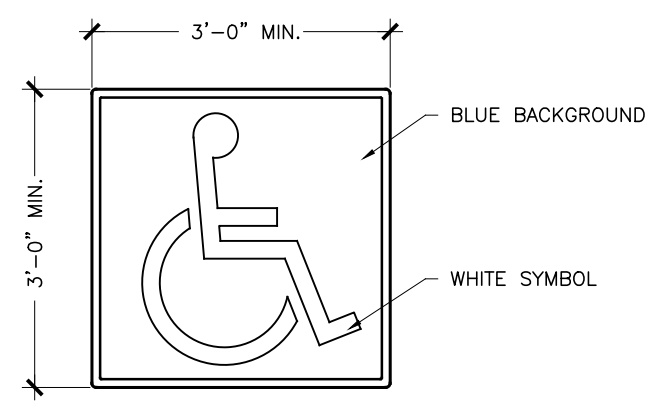
VAN ACCESSIBILITY SIGN



ACCESSIBLE PARKING STALL IDENTIFICATION SIGN



UNAUTHORIZED VEHICLES SIGN



ACCESSIBLE PARKING SIGN ON PAVEMENT

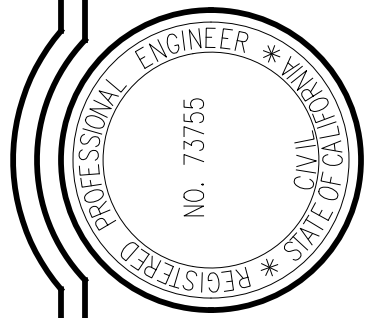
2 TYPICAL ADA SIGNAGE DETAILS

NO SCALE

THESE PLANS ARE ORIGINALLY PRINTED ON 22"x34" PAPER.



REVISIONS	BY



WHITCHURCH ENGINEERING, INC.
 610 9th Street Fortuna, California 95540
 Phone (707) 725-6926

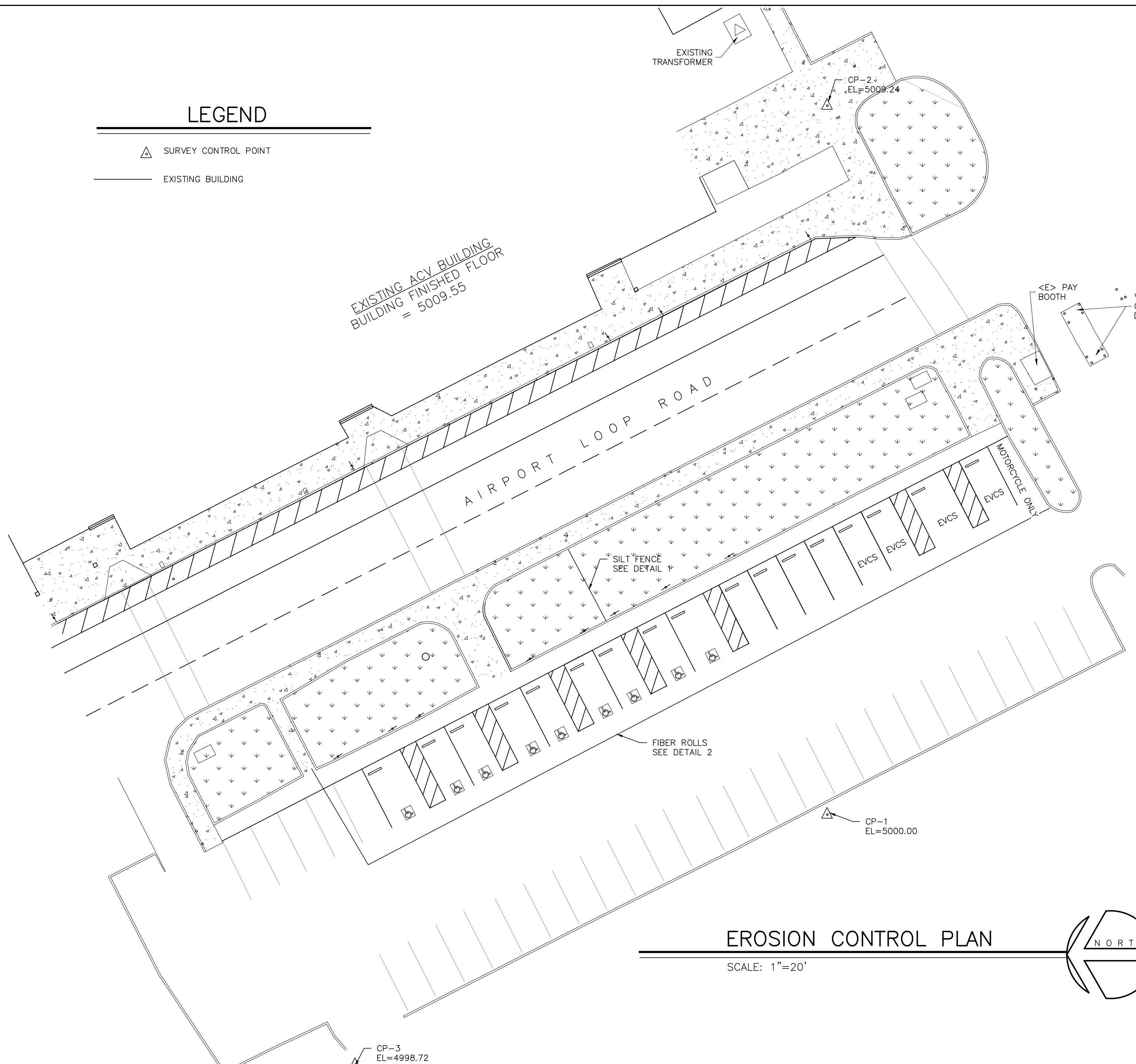
ACV EVS & ADA MODIFICATION PROJECT
 3561 Boeing Ave McKinleyville, CA 95519
ACCESSIBLE ROUTE AND PARKING DETAILS
 County of Humboldt

Date	AUG 3 '21
Scale	AS NOTED
Design	DPT
Drawn	GKK
Job	HCO 2001.2
Sheet	4

This drawing or drawing set shall not be used for construction unless a jurisdictional stamp (County, City, State, Federal) has been issued on the drawing, stating "FOR PERMIT" or similar verbiage, a wet signed professional engineer's stamp, and permit documents have been issued for the project.

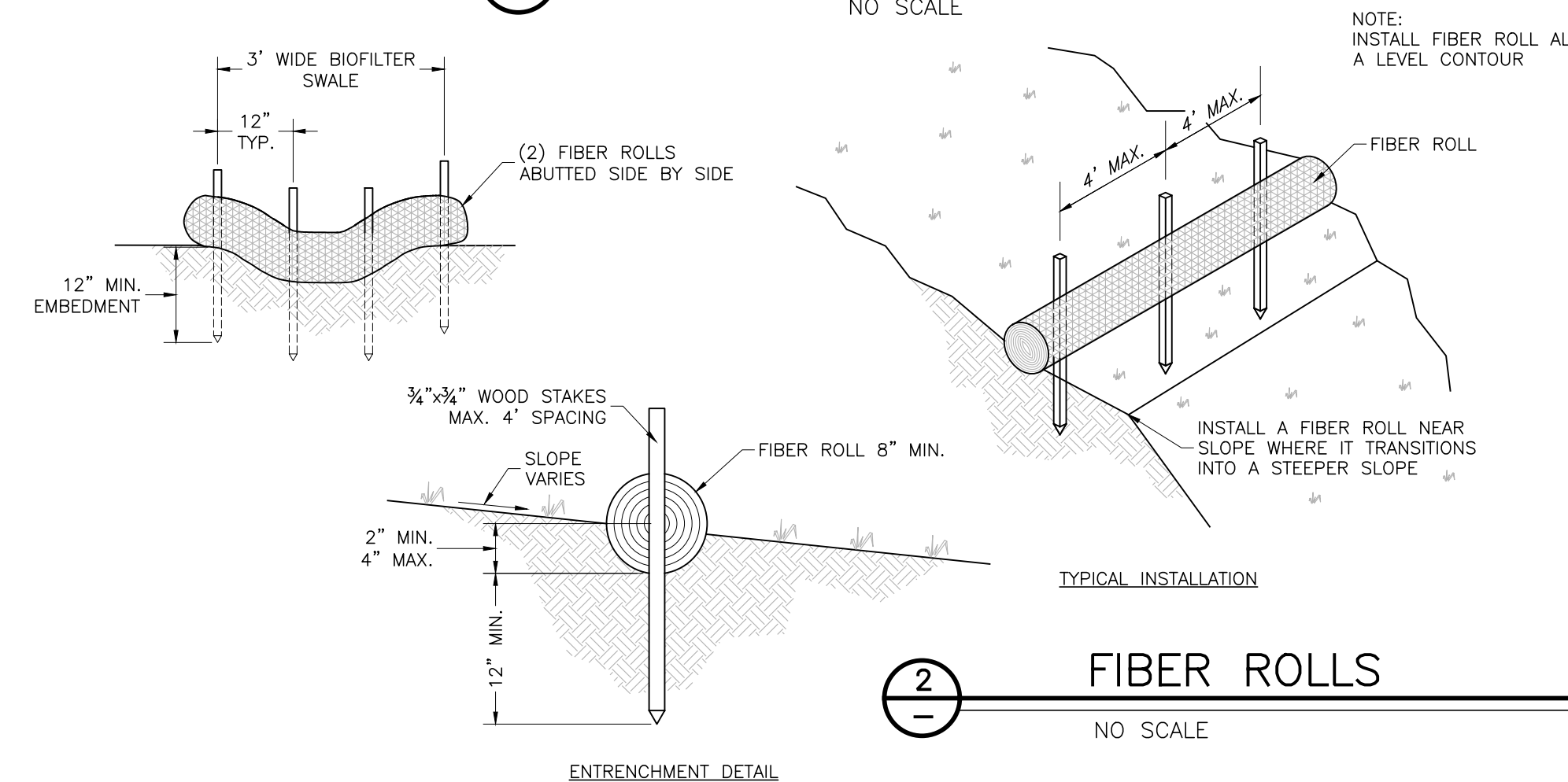
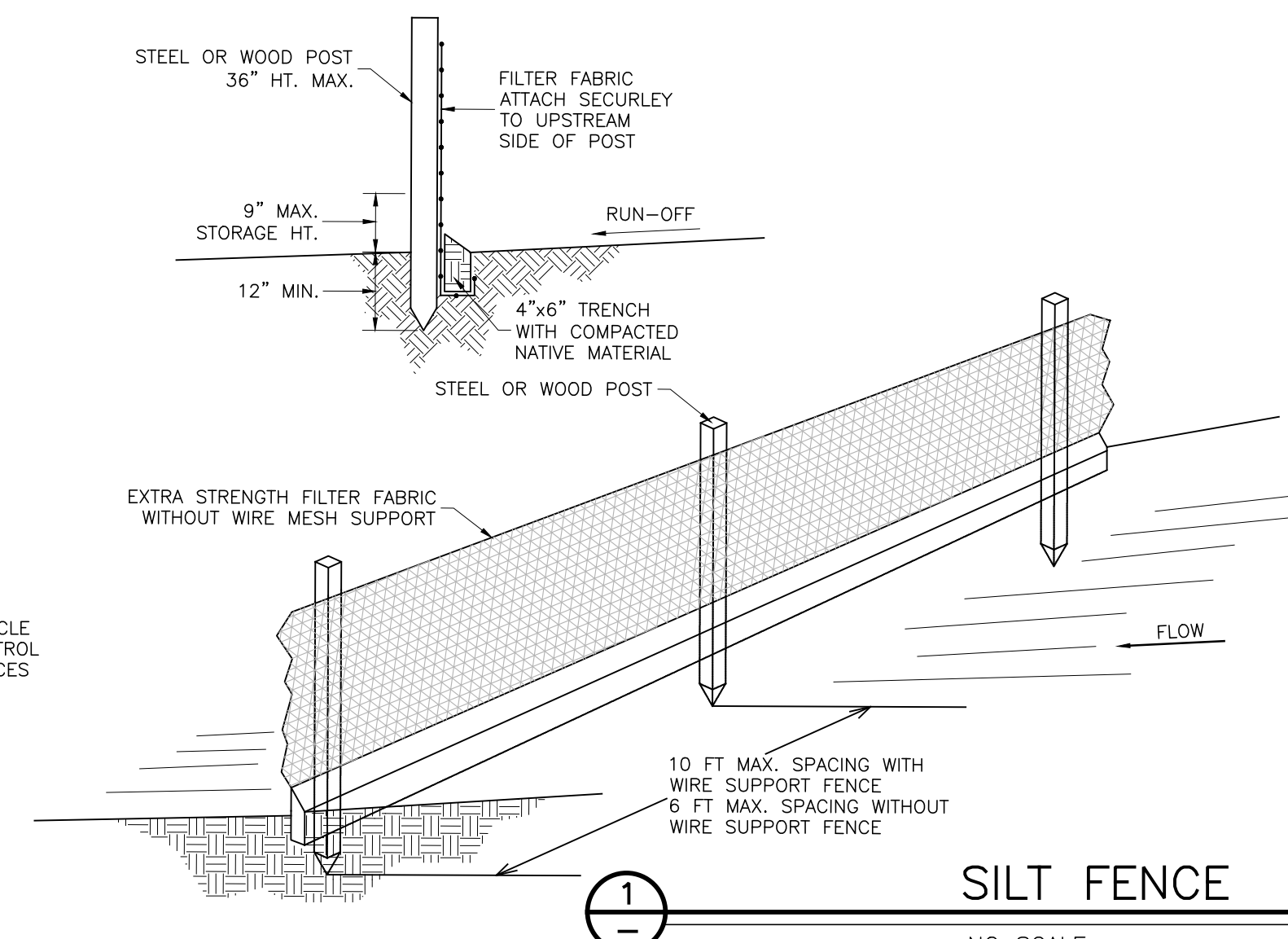
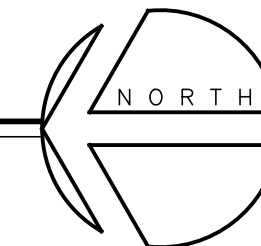
LEGEND

- ▲ SURVEY CONTROL POINT
- EXISTING BUILDING



EROSION CONTROL PLAN

SCALE: 1"=20'



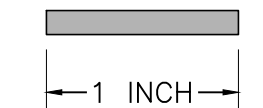
NOTES:

- THE CONTRACTOR SHALL INSPECT AND REPAIR FENCE AFTER EACH STORM EVENT AND REMOVE SEDIMENT WHEN NECESSARY.
- REMOVED SEDIMENT SHALL BE DEPOSITED TO AN AREA THAT WILL NOT CONTRIBUTE SEDIMENT OFF-SITE AND CAN BE PERMANENTLY STABILIZED.
- SILT FENCE SHALL BE PLACED ON SLOPE CONTOURS TO MAXIMUM PONDING EFFICIENCY.
- WOOD STAKES SHOULD BE COMMERCIAL QUALITY LUMBER OF THE SIZE AND SHAPE SHOWN ON THE PLANS. EACH STAKE SHOULD BE FREE FROM DECAY, SPLITS OR CRACKS LONGER THAN THE THICKNESS OF THE STAKE OR OTHER DEFECTS THAT WOULD WEAKEN THE STAKES AND CAUSE THE STAKES TO BE STRUCTURALLY UNSUITABLE.
- SILT FENCE SHALL BE LEFT IN PLACE, INSPECTED, AND MAINTAINED UNTIL THE UPSTREAM AREA IS PERMANENTLY STABILIZED.
- SEDIMENT THAT ACCUMULATES IN THE SILT FENCE MUST BE PERIODICALLY REMOVED IN ORDER TO MAINTAIN EFFECTIVENESS. SEDIMENT SHOULD BE REMOVED WHEN SEDIMENT ACCUMULATION REACHED ON THIRD OF THE BARRIER HEIGHT. SEDIMENT REMOVED DURING MAINTENANCE MAY BE INCORPORATED INTO EARTHWORK ON THE SITE OR DISPOSED OF AT AN APPROPRIATE LOCATION.
- SILT FENCE FABRIC SHOULD BE WOVEN POLYPROPYLENE WITH A MINIMUM WIDTH OF 36" AND A MINIMUM TENSILE STRENGTH OF 100 LB FORCE. THE FABRIC SHOULD CONFORM TO THE REQUIREMENTS IN ASTM DESIGNATION D4632 AND SHOULD HAVE AN INTEGRAL REINFORCEMENT LAYER. THE REINFORCEMENT LAYER SHOULD BE POLYPROPYLENE, OR EQUIVALENT, NET PROVIDED BY THE MANUFACTURER. THE PERMITIVITY OF THE FABRIC SHOULD BE BETWEEN 0.1 SEC AND 0.15 SEC IN CONFORMANCE WITH THE REQUIREMENTS IN THE ASTM DESIGNATION D4491.

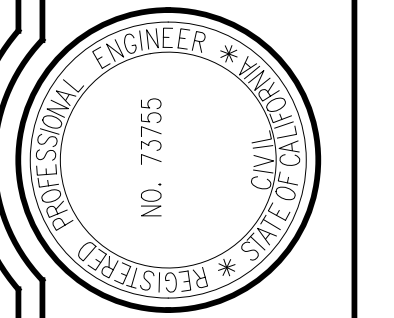
EROSION CONTROL NOTES

- A. GENERAL**
- THIS PLAN WAS PREPARED BY A QUALIFIED ENGINEER FROM WHITCHURCH ENGINEERING, INC WHO HAS TRAINING AND EXPERIENCE TO HAVE EXPERT KNOWLEDGE OF EROSION AND SEDIMENT CONTROL METHODS.
 - THE SOURCE OF THE BMP'S USED IN THIS PLAN PREPARATION ARE FROM CALIFORNIA STORM WATER BEST MANAGEMENT PRACTICE HANDBOOK AND STATE WATER RESOURCES CONTROL BOARD BEST MANAGEMENT PRACTICE CONSTRUCTION HANDBOOK.
 - THE IMPLEMENTATION OF BMP'S WILL OCCUR WITH THE ONSET OF CONSTRUCTION, IMMEDIATELY AFTER SOIL IS DISTURBED AT SITE. AS SHOWN ON SITE MAP A SILT FENCE WILL BE INSTALLED PARALLEL TO CONSTRUCTION SITE. OTHER EROSION CONTROL ACTIVITIES (HAY BALES, ETC) SHALL BE IMPLEMENTED AS DEEMED BY INSPECTOR.
 - A REPRESENTATIVE FROM WHITCHURCH ENGINEERING, INC SHALL INSPECT EROSION CONTROL MEASURES AFTER A SIGNIFICANT RAIN EVENT. A LETTER FOR EACH INSPECTION SHALL BE SUBMITTED TO THE JOB FILE. THE EROSION CONTROL MEASURES SHALL BE INSPECTED BY THE ENGINEER AS NECESSARY. ANY REQUIRED REPAIRS SHALL BE MADE IMMEDIATELY.
 - THIS PROJECT MAY COMMENCE DURING THE WINTER MONTHS (OCTOBER 15-APRIL 15) THEREFORE EFFORTS WILL BE MADE TO MINIMIZE LAND DISTURBANCES.
- B. WATER COURSES**
- EXISTING AND PROPOSED DRAINAGE PATTERNS, CHANNELS AND FACILITIES ARE SHOWN ON ATTACHED PLAN.
 - CHANGES IN FLOW QUANTITIES AND VELOCITIES ARE NEGLIGIBLE; EXISTING SLOPES AND DRAINAGE CHANNELS ARE TO REMAIN UNALTERED. SURFACE WATER FLOW IS BY SHEET FLOW. SLOPE PROTECTION MEASURES SHALL CONSIST OF APPLYING A PROTECTIVE LAYER OF STRAW OR ANOTHER SUITABLE MATERIAL TO SOIL SURFACE AREA.
 - TEMPORARY SLOPE STABILIZATION MEASURES SHALL CONSIST OF MULCHING WITH PROTECTIVE COVERINGS. APPLICATION OF THIS MEASURE SHALL COMMENCE WITH START OF CONSTRUCTION.
 - TEMPORARY CHANNEL TO CONTROL SURFACE WATER FLOW OVER CUT AND FILL SLOPES SHALL BE AN A.D.S PLASTIC PIPE DIRECTED TO ESTABLISHED DRAINAGE.
 - EXISTING GRASS VEGETATED FIELD AREA WILL SERVE TO REDUCE DRAINAGE FLOW VELOCITIES.
 - A TEMPORARY SEDIMENT DETENTION BASIN IS NOT NECESSARY FOR THIS PROJECT.
 - ALL LOOSE SOIL AND DEBRIS SHALL BE REMOVED FROM THE STREET AREAS UPON STARTING OPERATIONS AND PERIODICALLY THEREAFTER AS DIRECTED BY THE INSPECTOR. ALL ENTRANCES SHALL BE MAINTAINED IN A CONDITION THAT WILL PREVENT TRACKING OR FLOWING OF SEDIMENT ONTO PUBLIC RIGHT-OF-WAY.
- C. DISPOSAL OF EXCAVATED MATERIALS**
- EXCAVATED MATERIALS SHALL BE HAULED OFF SITE OR USED IN LANDSCAPING ON-SITE.
- D. DUST CONTROL**
- EXCESSIVE DUST SHALL BE CONTROLLED AT ALL TIMES DURING CONSTRUCTION AND UNTIL FINAL COMPLETION. THE CONTRACTOR, WHEN HE OR HIS SUBCONTRACTOR ARE OPERATING EQUIPMENT ON SITE, SHALL PREVENT THE FORMATION OF EXCESSIVE AIRBORNE NUISANCES BY WATERING AND/OR TREATING THE SITE OF THE WORK IN SUCH A MANNER THAT WILL CONFIRM DUST PARTICLES TO THE IMMEDIATE SURFACE OF THE WORK AREA. THE CONTRACTOR SHALL BE RESPONSIBLE FOR ANY DAMAGE CAUSED BY DUST FROM HIS OWN ACTIVITIES OR HIS SUBCONTRACTORS ACTIVITIES IN PERFORMING THE WORK UNDER THIS CONTRACT AND SHALL BE RESPONSIBLE FOR ANY CITATIONS, FINES, OR CHARGES RESULTING FROM DUST NUISANCES. DUST CONTROL WILL BE DONE ON A DAILY BASIS.
- E. REMOVAL OF VEGETATION AND REVEGETATION**
- VEGETATION REMOVAL IS TO BE LIMITED TO AREA DIRECTLY UNDER PROPOSED CONSTRUCTION.
- F. FINAL REPORTS AND NOTIFICATION OF COMPLETION**
- UPON COMPLETION OF THE PERMITTED ROUGH GRADING WORK AND AT THE FINAL COMPLETION OF THE WORK, A SET OF REPORTS, DRAWINGS AND SUPPLEMENTS THERETO ARE REQUIRED FOR ENGINEERED GRADING, OR WHEN PROFESSIONAL INSPECTION IS PERFORMED FOR REGULAR GRADING, AS APPLICABLE. PRINTED ON 22"x34" PAPER.
 - THE BUILDING OFFICIAL SHALL BE NOTIFIED WHEN THE GRADING OPERATION IS READY FOR FINAL INSPECTION AFTER ALL WORK AND ALL EROSION-CONTROL MEASURES HAVE BEEN COMPLETED IN ACCORDANCE WITH THE FINAL APPROVED GRADING PLAN, AND THE REQUIRED REPORTS HAVE BEEN SUBMITTED.

THESE PLANS ARE ORIGINALLY SUPPLEMENTS THERETO ARE REQUIRED FOR ENGINEERED GRADING, OR WHEN PROFESSIONAL INSPECTION IS PERFORMED FOR REGULAR GRADING, AS APPLICABLE. PRINTED ON 22"x34" PAPER.



REVISIONS	BY



WHITCHURCH ENGINEERING, INC.
610 9th Street Fortuna, California 95540
Phone (707) 725-6926

ACV EVS & ADA MODIFICATION PROJECT
3561 Boeing Ave McKinleyville, CA 95519
APN: 511-071-005, 511-351-009

EROSION CONTROL PLAN AND DETAILS
County of Humboldt

Date	AUG 3 '21
Scale	AS NOTED
Design	DPT
Drawn	GKK
Job	HCO 2001.2
Sheet	5

This drawing or drawing set shall not be used for construction unless a jurisdictional stamp (County, City, State, Federal) has been issued on the drawing, stating "FOR PERMIT" or similar verbiage, a wet signed professional engineer's stamp, and permit documents have been issued for the project.