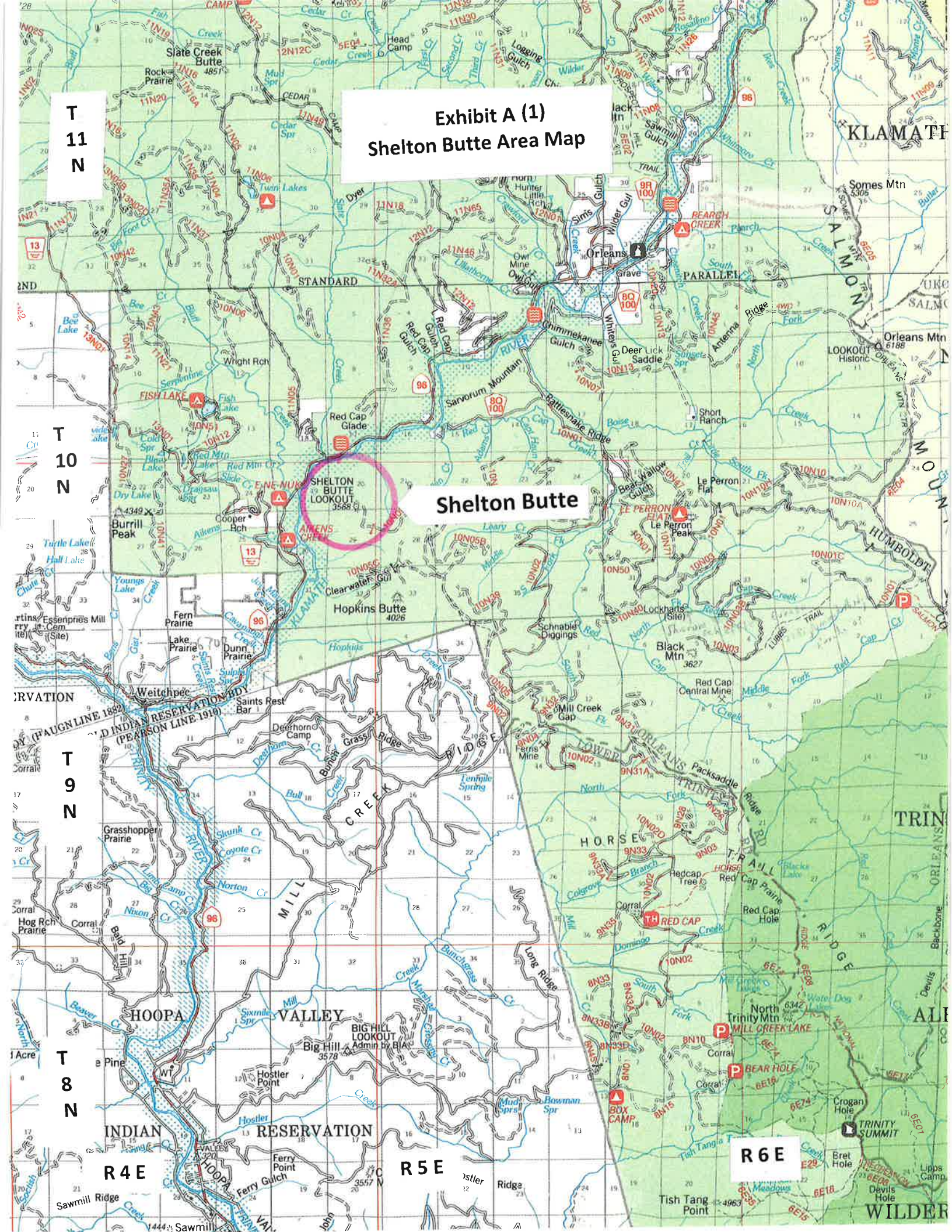


Exhibit A (1)  
Shelton Butte Area Map

Shelton Butte



T 11 N

T 10 N

T 9 N

T 8 N

R 4 E

R 5 E

R 6 E







1 550 000 FEET

123° 37' 30"

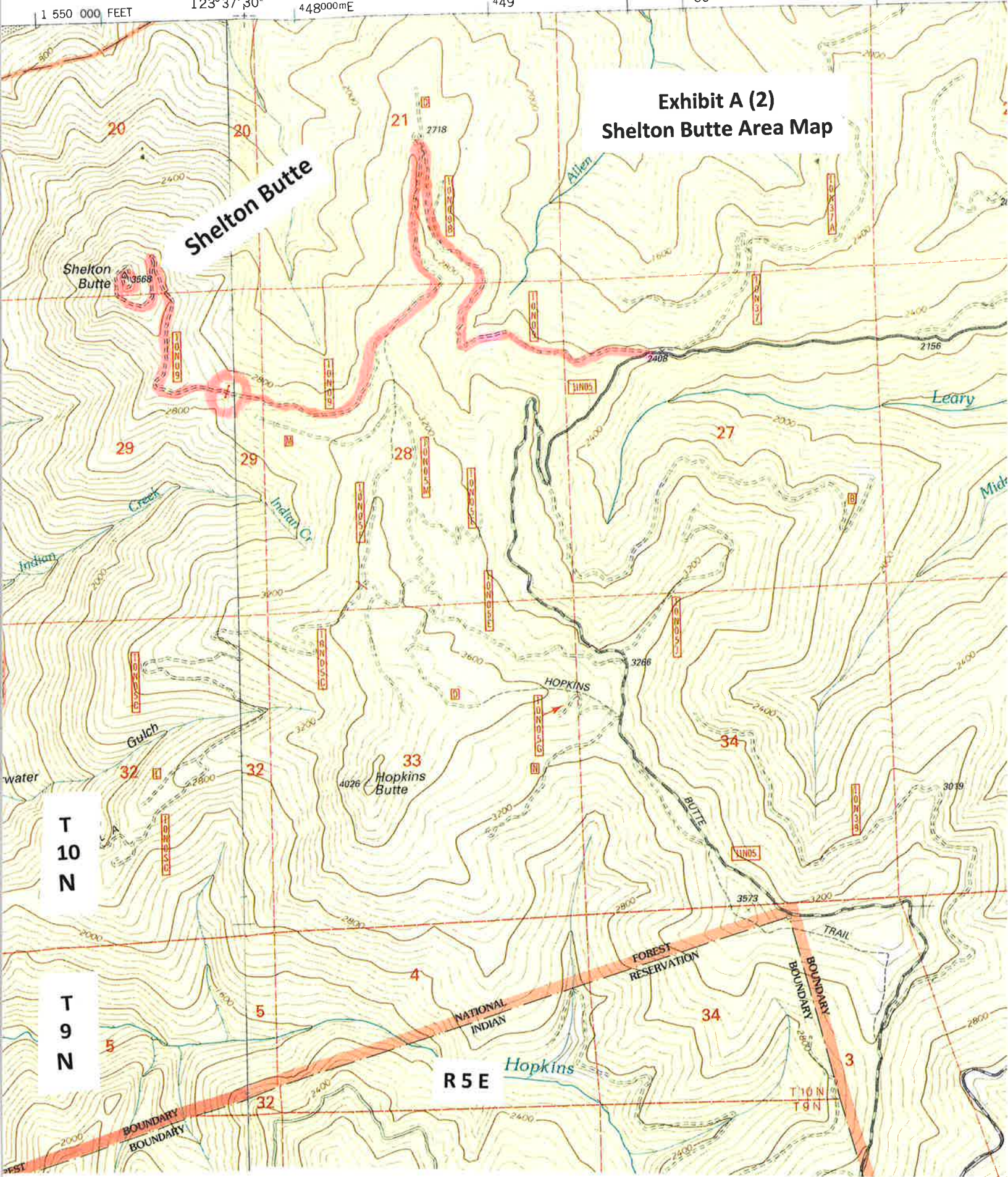
448000mE

449

450

35'

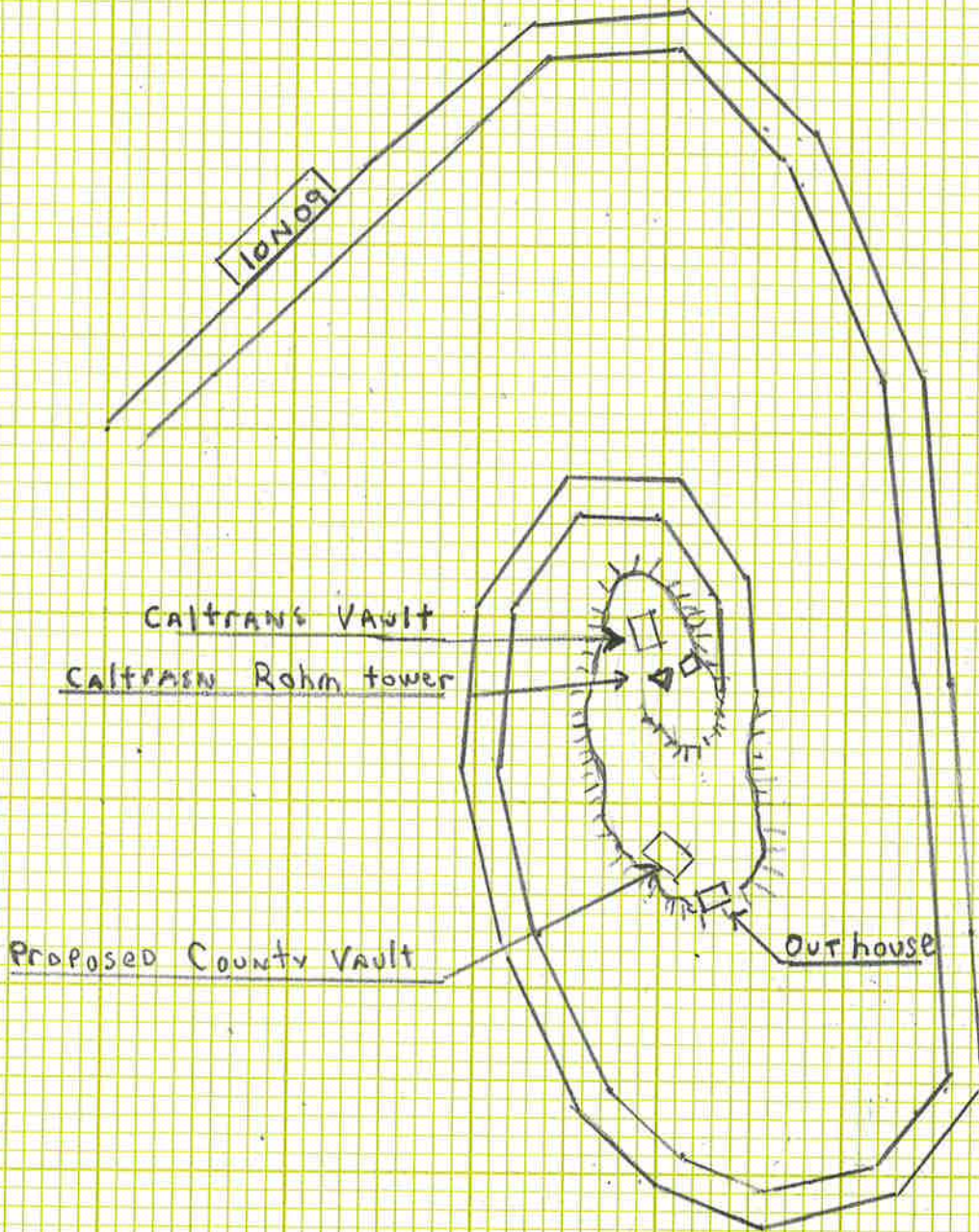
Exhibit A (2)  
Shelton Butte Area Map







SHELTON Butte  
T10N R5E Sec 20  
AREA MAP (3)



SCALE 1" = 50'

5/24/2017  
A. Fong



**Exhibit B**  
**Communication Site Lease ORL – 200**  
**Shelton Butte**  
**Humboldt County**  
**Construction Stipulations and Operating Plan**

1. Placement of Communication Vault  
County Pepero Vault to be placed on the outer edge of the Shelton Butte parking area near the outhouse (see Exhibit A (3)). The parking area is to remain open for parking and turning vehicle around. Vault to be placed in existing ground surface and leveled using the 4 self-leveling legs that are part of the vault. All excess rock or other materials used for weighing down the vault legs is to be removed from the lease area.
2. Packaging materials and broken equipment  
All packaging materials associated with the new vault or broken equipment is to be removed from the permit area and disposed of off National Forest lands.
3. Existing brush along the edge of the parking area in the vicinity of the vault can be trimmed.
4. Caltrans occupies the other vault at this site. It is the County's responsibility to not block access to the Caltrans vault of interfere with their communication signal.

