

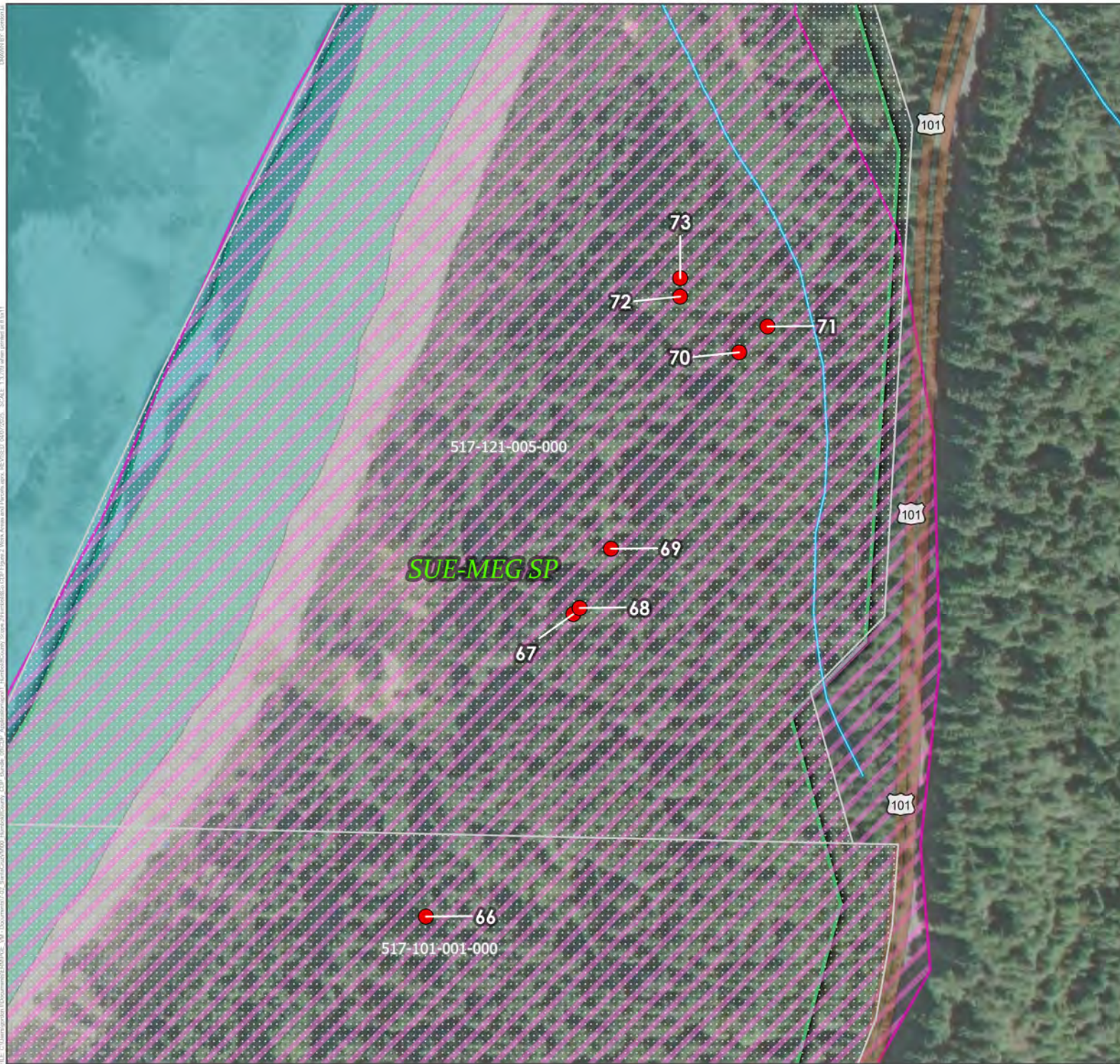








C:\Users\gordon\Documents\EMAP\ER - Documents\2.27 - Sheet 2 of 27 - PG&E Humboldt County Bundled CDP - Figure 2 - Work Areas and Parcels.aprx REVISED 04/02/2025 SCALE 1:3,709 when printed at 8.5x11



**DETAIL AREA**

- Work Areas
- Assessor's Parcels
- Coastal Zone
- CDPR Park Boundaries
- Streams
- USFWS Critical Habitat
  - Marbled murrelet
- NWI Wetland Types
  - Estuarine and Marine Deepwater
  - Estuarine and Marine Wetland
  - Riverine

Applicant: Valerie Mora, Supervisor  
Environmental Management  
6030 West Oaks Blvd, Rocklin, CA 95605  
Tel: 916-407-6264

Figures prepared by: Gordon Li  
1340 Treat Blvd #550, Walnut Creek, CA 94597  
Tel: 628-221-7849

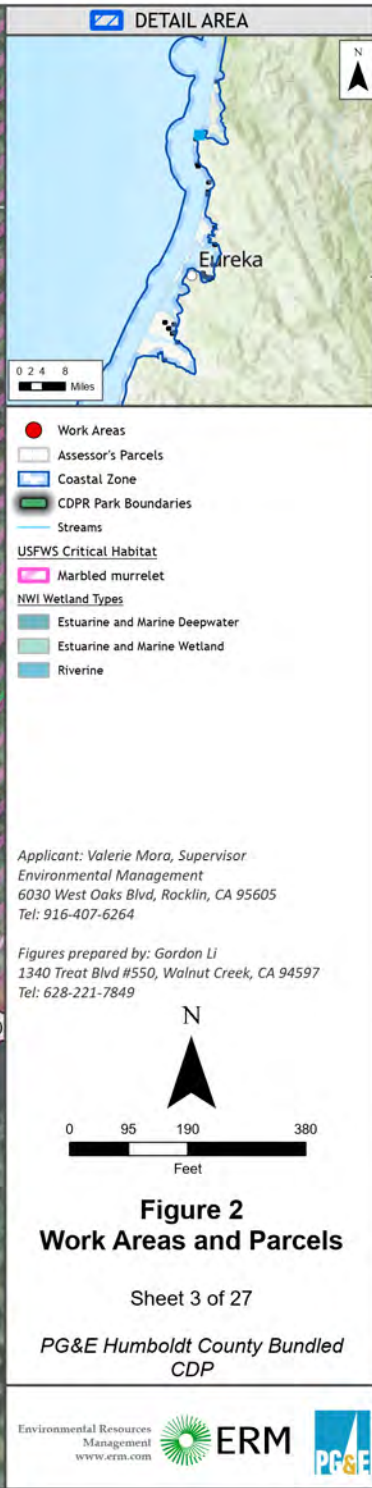
**Figure 2**  
**Work Areas and Parcels**

Sheet 2 of 27

PG&E Humboldt County Bundled  
CDP

Environmental Resources  
Management  
www.erm.com























FILE: C:\Users\gordon\Documents\EMAP\ER\_M\Documents\7.2.1\_SpatialData\Map03\_HumboldtCounty\_Bundled\CDP\_Figure2\_WorkAreasandParcels.aprx REVISED: 04/07/2025, SCALE: 1:3,709 when printed at 8.5x11



**DETAIL AREA**

0 2 4 8 Miles

- Work Areas
- Assessor's Parcels
- Coastal Zone
- CDPR Park Boundaries
- Streams

**USFWS Critical Habitat**

- Western snowy plover

**NWI Wetland Types**

- Estuarine and Marine Deepwater
- Estuarine and Marine Wetland
- Freshwater Emergent Wetland
- Freshwater Forested/Shrub Wetland
- Riverine

Applicant: Valerie Mora, Supervisor  
Environmental Management  
6030 West Oaks Blvd, Rocklin, CA 95605  
Tel: 916-407-6264

Figures prepared by: Gordon Li  
1340 Treat Blvd #550, Walnut Creek, CA 94597  
Tel: 628-221-7849

N

0 95 190 380 Feet

**Figure 2**  
**Work Areas and Parcels**

Sheet 8 of 27

PG&E Humboldt County Bundled  
CDP

Environmental Resources  
Management  
www.erm.com





**DETAIL AREA**

0 2 4 8 Miles

**Work Areas**

- Assessor's Parcels
- Coastal Zone
- Streams

**USFWS Critical Habitat**

- Western snowy plover

**NWI Wetland Types**

- Estuarine and Marine Wetland
- Freshwater Emergent Wetland
- Freshwater Forested/Shrub Wetland
- Riverine

Applicant: Valerie Mora, Supervisor  
Environmental Management  
6030 West Oaks Blvd, Rocklin, CA 95605  
Tel: 916-407-6264

Figures prepared by: Gordon Li  
1340 Treat Blvd #550, Walnut Creek, CA 94597  
Tel: 628-221-7849

N

0 95 190 380 Feet

**Figure 2**  
**Work Areas and Parcels**

Sheet 9 of 27

PG&E Humboldt County Bundled  
CDP

Environmental Resources  
Management  
www.erm.com





















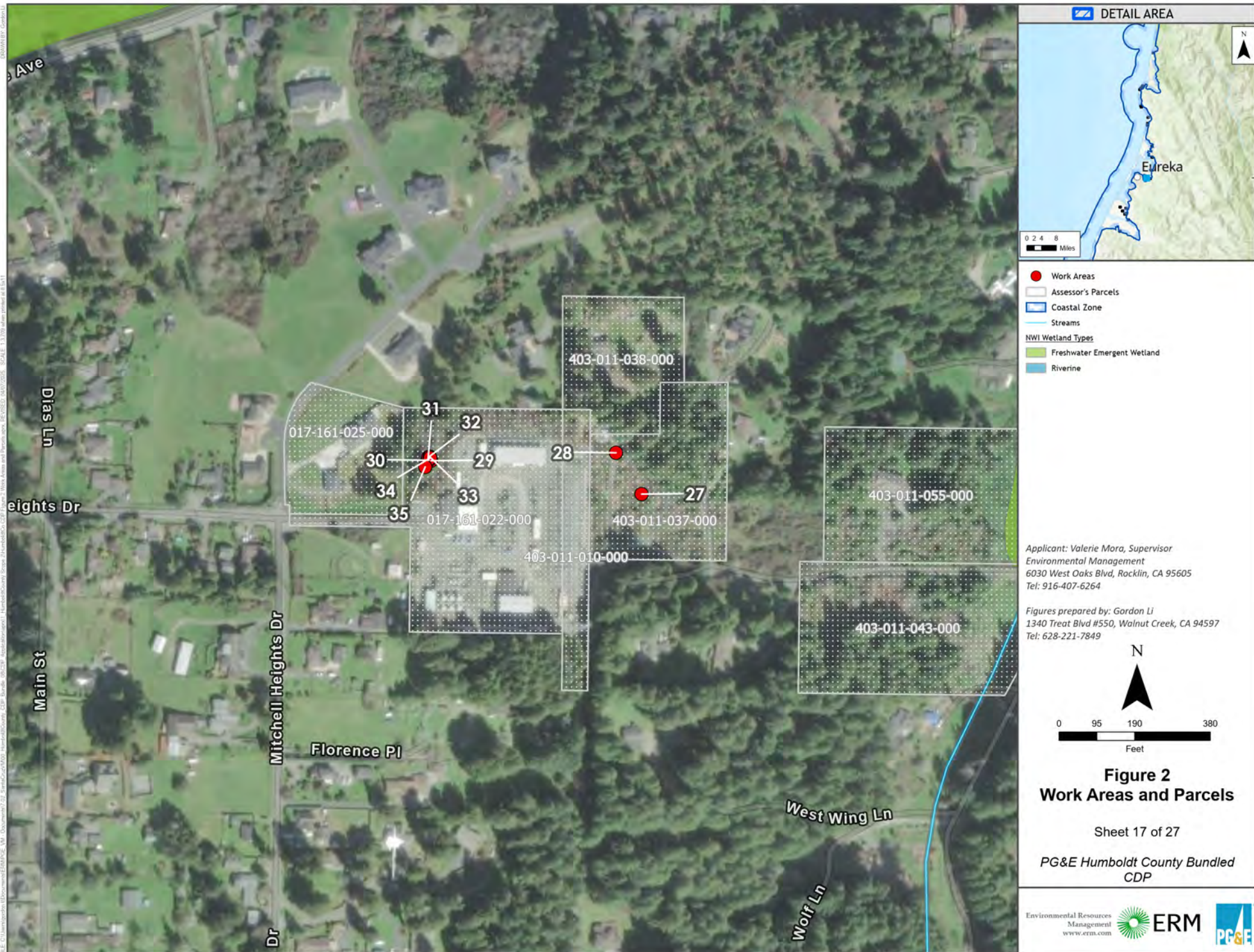


FILE: C:\Users\gordon\Documents\ERMP\ERMP\_V01 - Document\27-28\_Superior\Map03\_HumboldtCounty\_CDP\_Map03\_082519.aprx Application: C:\Program Files\ESRI\ArcGIS\bin\arcview.exe, REVISED: 04/07/2019, SCALE: 1:1,700, Date printed: 04/07/2019, 09:00:00 AM, User: gordon

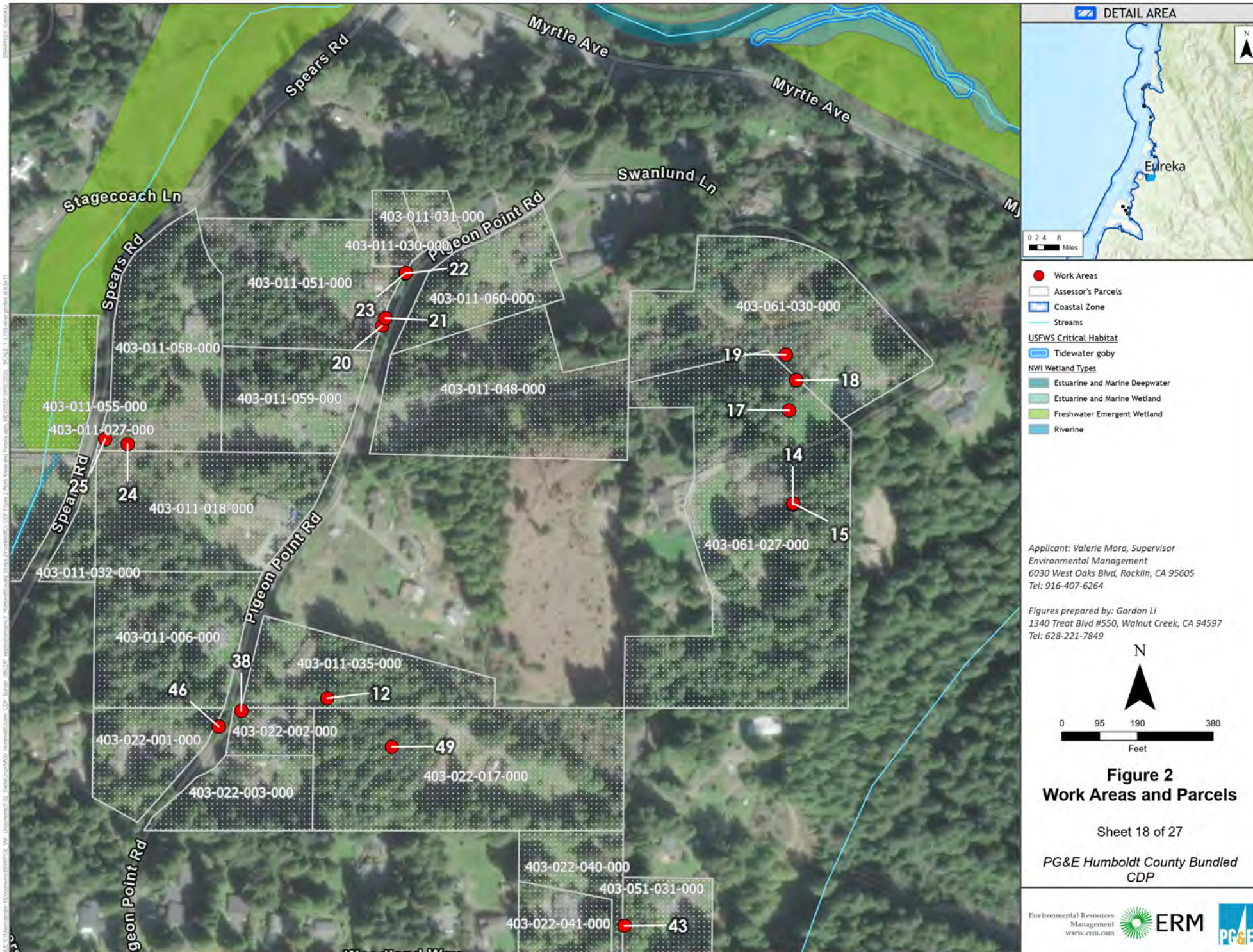




FILE: C:\Users\gordon\Documents\EMAP\PG&E - Humboldt County Bundled CDP - Figure 2 Work Areas and Parcels.aprx REVISED: 04/07/2025 SCALE: 1:3,709 when printed at 8.5x11





























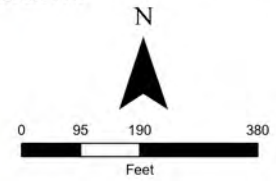




 Work Areas  
 Assessor's Parcels  
 Coastal Zone  
 Streams  
NWI Wetland Types  
 Freshwater Emergent Wetland  
 Freshwater Forested/Shrub Wetland

*Applicant: Valerie Mora, Supervisor  
Environmental Management  
6030 West Oaks Blvd, Rocklin, CA 95605  
Tel: 916-407-6264*

Figures prepared by: Gordon Li  
1340 Treat Blvd #550, Walnut Creek, CA 94597  
Tel: 628-221-7849



**Figure 2**  
**Work Areas and Parcels**

Sheet 23 of 27








PG&E Humboldt County Bundled  
CDP





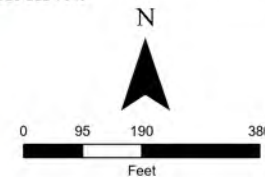




 Work Areas  
 Assessor's Parcels  
 Coastal Zone  
 Streams  
NWI Wetland Types  
 Freshwater Emergent Wetland  
 Freshwater Forested/Shrub Wetland  
 Riverine

*Applicant: Valerie Mora, Supervisor  
Environmental Management  
6030 West Oaks Blvd, Rocklin, CA 95605  
Tel: 916-407-6264*

Figures prepared by: Gordon Li  
1340 Treat Blvd #550, Walnut Creek, CA 94597  
Tel: 628-221-7849



**Figure 2**  
**Work Areas and Parcels**

Sheet 25 of 27

PG&E Humboldt County Bundled  
CDP



FILE: C:\humboldt\Documents\ETM\HCP\04\0403\HumboldtCounty\Bundled\CDP\Figure 2\Work Areas and Parcels.aprx REVISED: 04/02/2025, SCALE: 1:3,709 when printed at 8.5x11



**DETAIL AREA**

- Work Areas
- Assessor's Parcels
- Coastal Zone
- Streams

**USFWS Critical Habitat**

- Western snowy plover

**NWI Wetland Types**

- Estuarine and Marine Deepwater
- Estuarine and Marine Wetland
- Freshwater Emergent Wetland
- Freshwater Forested/Shrub Wetland
- Freshwater Pond
- Riverine

Applicant: Valerie Mora, Supervisor  
Environmental Management  
6030 West Oaks Blvd, Rocklin, CA 95605  
Tel: 916-407-6264

Figures prepared by: Gordon Li  
1340 Treat Blvd #550, Walnut Creek, CA 94597  
Tel: 628-221-7849

### Figure 2

### Work Areas and Parcels

Sheet 26 of 27

PG&E Humboldt County Bundled CDP

Environmental Resources Management  
www.erm.com





**DETAIL AREA**

0 2 4 8 Miles

N

- Work Areas
- Assessor's Parcels
- Coastal Zone
- Streams

**NWI Wetland Types**

- Freshwater Emergent Wetland
- Freshwater Forested/Shrub Wetland
- Riverine

Applicant: Valerie Mora, Supervisor  
 Environmental Management  
 6030 West Oaks Blvd, Rocklin, CA 95605  
 Tel: 916-407-6264

Figures prepared by: Gordon Li  
 1340 Treat Blvd #550, Walnut Creek, CA 94597  
 Tel: 628-221-7849

N

0 95 190 380  
Feet

**Figure 2**  
**Work Areas and Parcels**

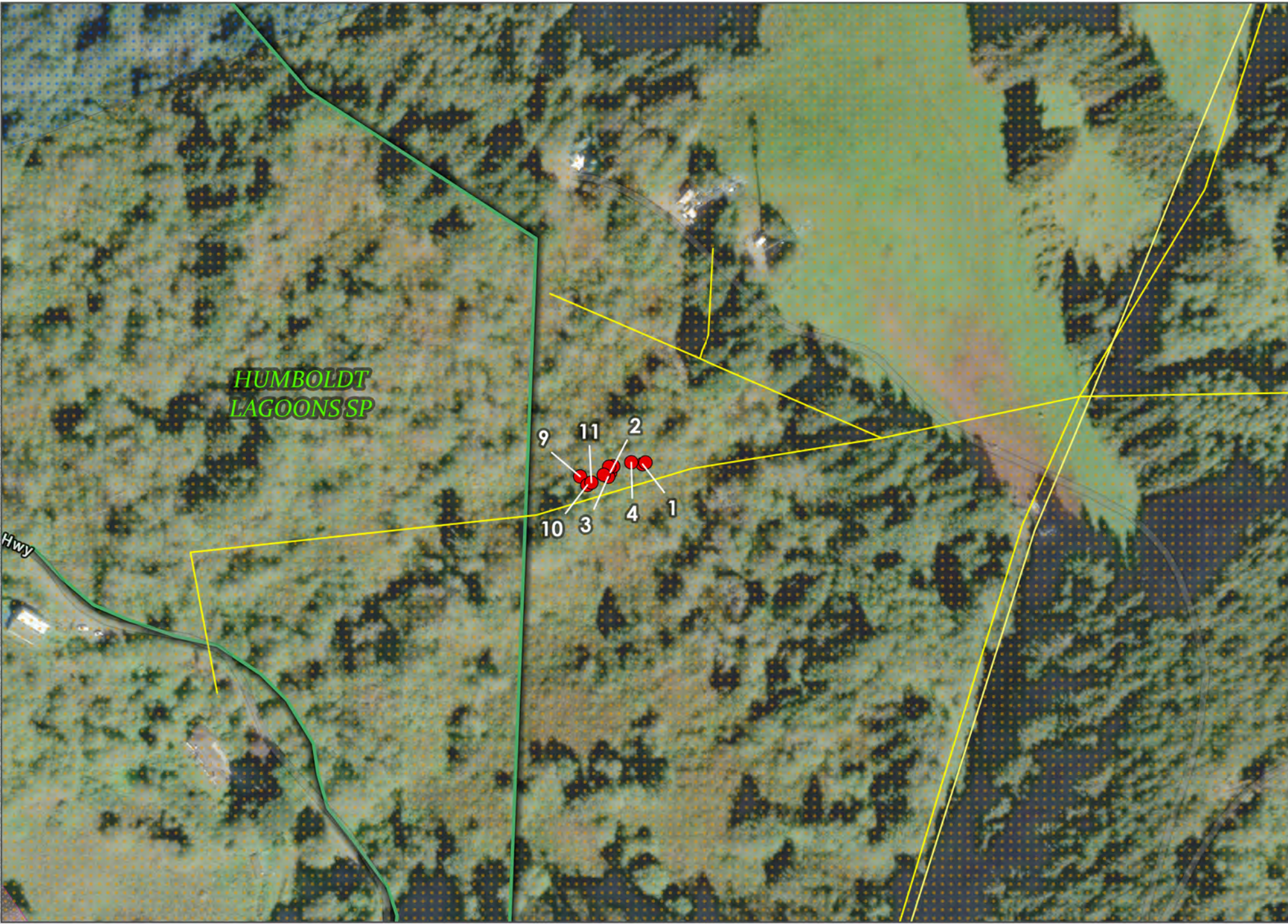
Sheet 27 of 27

PG&E Humboldt County Bundled  
 CDP

Environmental Resources  
 Management  
[www.erm.com](http://www.erm.com)



Drawn by: Gordon Li  
C:\Users\gordon\Documents\CDP\Humboldt\Humboldt\_CDP\_Figures\Humboldt\_CDP\_Figures\_1\Humboldt\_CDP\_Figures\_1\_Sheet\_1.mxd  
Date: 12/20/2017 1:20:00 PM  
Scale: 1:2000  
Projection: NAD83  
Datum: NAD83  
Units: Feet  
Color: True Color  
Resolution: 300 DPI  
Status: Final  
Author: Valerie Mora  
Title: Humboldt County Bundled CDP  
Version: 1.0  
Revision: 1.0  
Revision Description: Initial Draft  
Revision Date: 12/20/2017



**DETAIL AREA**

0 2.5 5 10 Miles

**Work Area**

**Sheet Boundary**

**Coastal Zone**

**CDPR Park Boundaries**

**Electric Transmission and Distribution Line**

**Slope Stability**

**Moderate Instability**

**Low Instability**

**Flood Hazard Zones**

**1% Annual Chance Flood Hazard**

Applicant: Valerie Mora, Supervisor  
Environmental Management  
6030 West Oaks Blvd, Rocklin, CA 95605  
Tel: 916-407-6264

Figures prepared by: Gordon Li  
1340 Treat Blvd #550, Walnut Creek, CA 94597  
Tel: 628-221-7849

**Figure 3  
Plot Plan**

Sheet 1 of 27

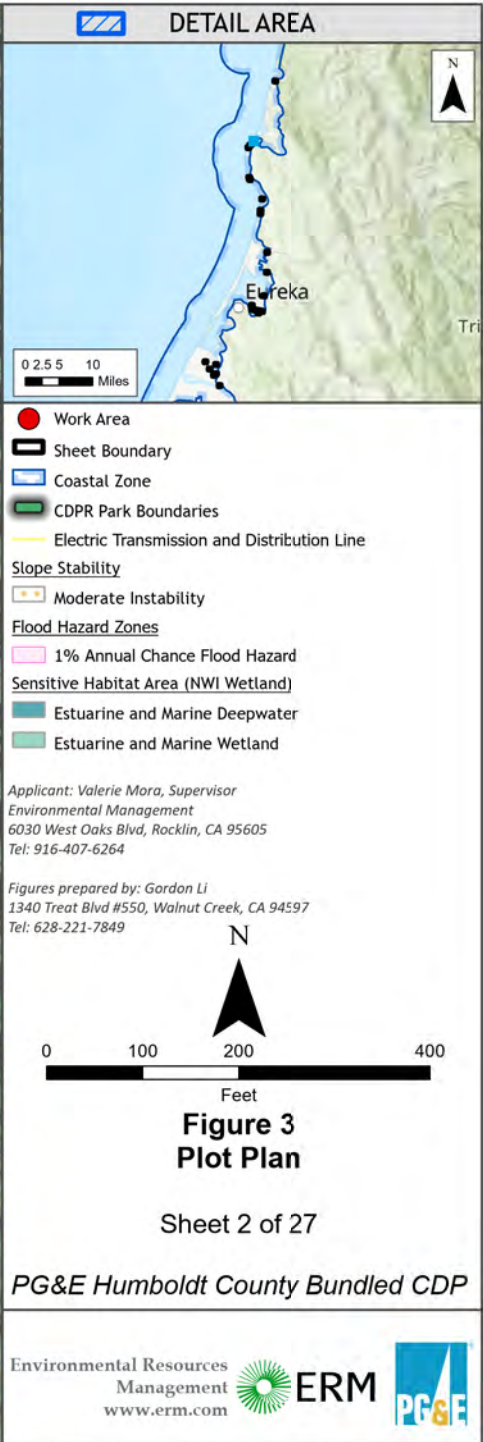
**PG&E Humboldt County Bundled CDP**

Environmental Resources Management  
www.erm.com

**ERM**

**PG&E**















Drawn by: Gordon Li  
Scale: 1" = 400' when printed at 11x17  
Date: 10/20/2015  
Project: PG&E Humboldt County Bundled CDP  
Sheet: 5 of 27



DETAIL AREA

0 2.5 5 10 Miles

0 100 200 400 Feet

- Work Area
- Sheet Boundary
- Coastal Zone
- CDPR Park Boundaries
- Electric Transmission and Distribution Line

**Slope Stability**

- High Instability

Applicant: Valerie Mora, Supervisor  
Environmental Management  
6030 West Oaks Blvd, Rocklin, CA 95605  
Tel: 916-407-6264

Figures prepared by: Gordon Li  
1340 Treat Blvd #550, Walnut Creek, CA 94597  
Tel: 628-221-7849

**Figure 3  
Plot Plan**

Sheet 5 of 27

PG&E Humboldt County Bundled CDP

Environmental Resources  
Management  
www.erm.com

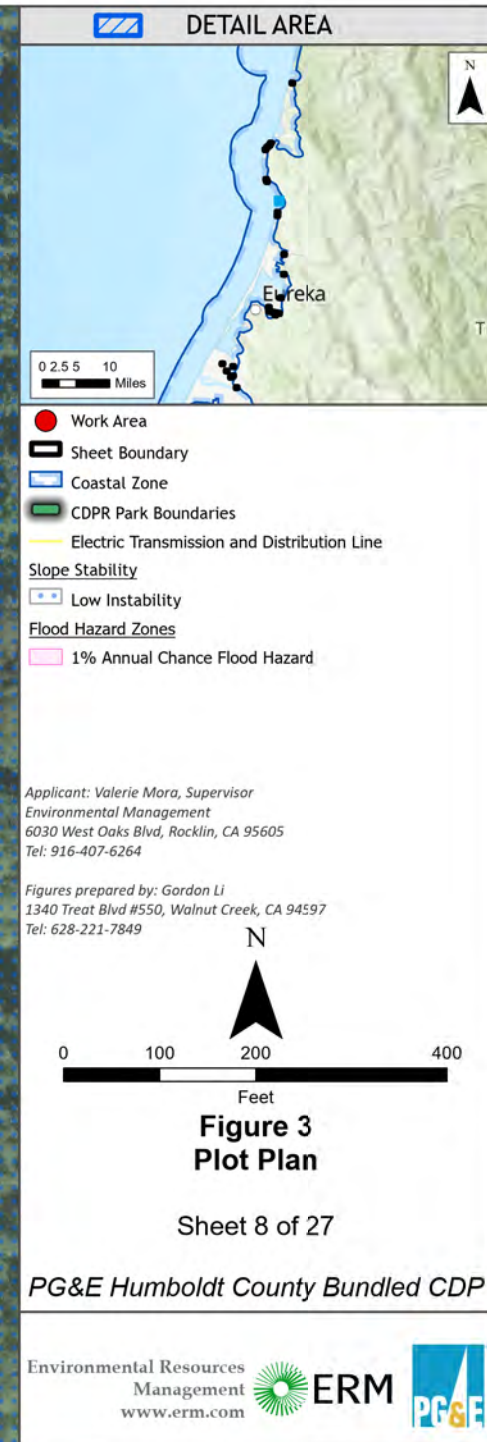














DRAWN BY: Gordon Li  
C:\Users\gordon\Documents\BUNDLED\_CDP\_V01\Drawings\BundledCDP\_V01\Map\_Series\BundledCDP\_V01\_Series1\BundledCDP\_V01\_Series1\_Sheet9.mxd, SCALE: 1"=200' when plotted at 11x17"  
FILE: C:\Users\gordon\Documents\BUNDLED\_CDP\_V01\Drawings\BundledCDP\_V01\Map\_Series\BundledCDP\_V01\_Series1\BundledCDP\_V01\_Series1\_Sheet9.mxd, DATE: 10/20/2015, TIME: 10:00:00 AM, USER: gordon



**DETAIL AREA**

0 2.5 5 10 Miles

**Work Area**

**Sheet Boundary**

**Coastal Zone**

**Electric Transmission and Distribution Line**

**Slope Stability**

**Sensitive Habitat Area (NWI Wetland)**

**Freshwater Forested/Shrub Wetland**

**Riverine**

Applicant: Valerie Mora, Supervisor  
Environmental Management  
6030 West Oaks Blvd, Rocklin, CA 95605  
Tel: 916-407-6264

Figures prepared by: Gordon Li  
1340 Treat Blvd #550, Walnut Creek, CA 94597  
Tel: 628-221-7849

0 100 200 400 Feet

**Figure 3  
Plot Plan**

Sheet 9 of 27

**PG&E Humboldt County Bundled CDP**

Environmental Resources Management  
www.erm.com













**DETAIL AREA**

0 2.5 5 10 Miles

Applicant: Valerie Mora, Supervisor  
Environmental Management  
6030 West Oaks Blvd, Rocklin, CA 95605  
Tel: 916-407-6264

Figures prepared by: Gordon Li  
1340 Treat Blvd #550, Walnut Creek, CA 94597  
Tel: 628-221-7849

0 100 200 400 Feet

**Figure 3  
Plot Plan**

Sheet 12 of 27

PG&E Humboldt County Bundled CDP

Environmental Resources Management  
www.erm.com

ERM

PG&E











Drawn by: Gordon Li  
Scale: 1" = 400 feet  
Date: 12/20/2019  
Project: PG&E Humboldt County Bundled CDP  
Sheet: 15 of 27  
Applicant: Valerie Mora, Supervisor  
Environmental Management  
6030 West Oaks Blvd, Rocklin, CA 95605  
Tel: 916-407-6264  
Figures prepared by: Gordon Li  
1340 Treat Blvd #550, Walnut Creek, CA 94597  
Tel: 628-221-7849



**DETAIL AREA**

0 2.5 5 10 Miles

**Work Area**

**Sheet Boundary**

**Coastal Zone**

**Electric Transmission and Distribution Line**

**Slope Stability**

**Flood Hazard Zones**

**1% Annual Chance Flood Hazard**

Applicant: Valerie Mora, Supervisor  
Environmental Management  
6030 West Oaks Blvd, Rocklin, CA 95605  
Tel: 916-407-6264

Figures prepared by: Gordon Li  
1340 Treat Blvd #550, Walnut Creek, CA 94597  
Tel: 628-221-7849

0 100 200 400 Feet

**Figure 3  
Plot Plan**

Sheet 15 of 27

**PG&E Humboldt County Bundled CDP**

Environmental Resources Management  
www.erm.com













0 2.5 5 10 Miles

● Work Area

▬ Sheet Boundary

▬ Coastal Zone

▬ Electric Transmission and Distribution Line

**Slope Stability**

▬ Moderate Instability

Applicant: Valerie Mora, Supervisor  
Environmental Management  
6030 West Oaks Blvd, Rocklin, CA 95605  
Tel: 916-407-6264

Figures prepared by: Gordon Li  
1340 Treat Blvd #550, Walnut Creek, CA 94597  
Tel: 628-221-7849

0 100 200 400 Feet

**Figure 3  
Plot Plan**

Sheet 18 of 27

**PG&E Humboldt County Bundled CDP**

Environmental Resources Management  
www.erm.com

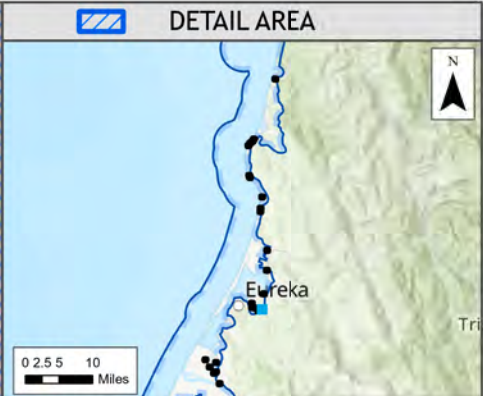






DATE: 01/28/2019 11:00:00 AM, PROJECT: PG&E Humboldt County Bundled CDP, SHEET: 20, DRAWN BY: Gordon Li, SCALE: 1" = 200' when printed at 11x17"








DETAIL AREA


0 2.5 5 10 Miles

0 100 200 400 Feet


 Work Area


 Sheet Boundary

 Coastal Zone


 Electric Transmission and Distribution Line


Slope Stability

 Moderate Instability

 Low Instability

Flood Hazard Zones

 1% Annual Chance Flood Hazard

 0.2% Annual Chance Flood Hazard

Applicant: Valerie Mora, Supervisor  
Environmental Management  
6030 West Oaks Blvd, Rocklin, CA 95605  
Tel: 916-407-6264


Figures prepared by: Gordon Li  
1340 Treat Blvd #550, Walnut Creek, CA 94597  
Tel: 628-221-7849


**Figure 3**  
**Plot Plan**

Sheet 20 of 27

PG&E Humboldt County Bundled CDP

Environmental Resources Management  
www.erm.com

 ERM

 PG&E



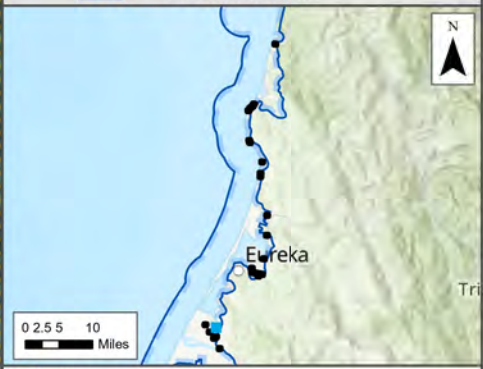




Drawn by: Gordon Li  
Date: 12/20/2019  
Scale: 1" = 200' when printed at 11x17  
Project: PG&E Humboldt County Bundled CDP  
Sheet: 22 of 27  
Title: Figure 3 Plot Plan



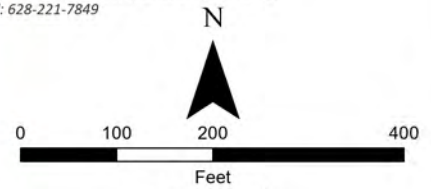
**DETAIL AREA**



- Work Area
- ▬ Sheet Boundary
- ▬ Coastal Zone
- ▬ Electric Transmission and Distribution Line
- Slope Stability**
  - ▬ Moderate Instability

Applicant: Valerie Mora, Supervisor  
Environmental Management  
6030 West Oaks Blvd, Rocklin, CA 95605  
Tel: 916-407-6264

Figures prepared by: Gordon Li  
1340 Treat Blvd #550, Walnut Creek, CA 94597  
Tel: 628-221-7849



**Figure 3  
Plot Plan**

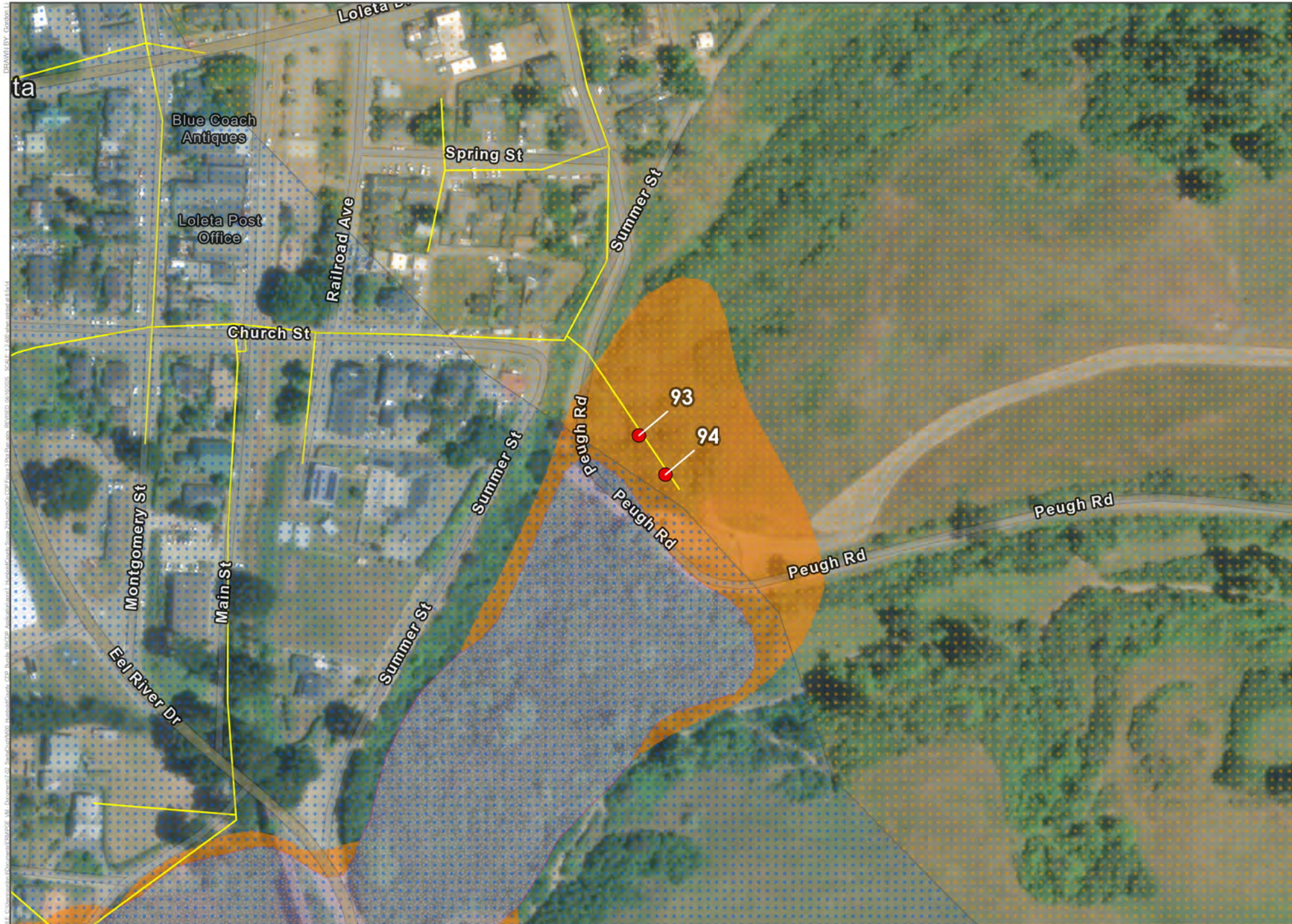
Sheet 22 of 27


**PG&E Humboldt County Bundled CDP**











DETAIL AREA

0 2.5 5 10 Miles

Work Area

Sheet Boundary

Coastal Zone

Electric Transmission and Distribution Line

**Slope Stability**

- Moderate Instability
- Low Instability

**Flood Hazard Zones**

- 1% Annual Chance Flood Hazard
- 0.2% Annual Chance Flood Hazard

Applicant: Valerie Mora, Supervisor  
Environmental Management  
6030 West Oaks Blvd, Rocklin, CA 95605  
Tel: 916-407-6264

Figures prepared by: Gordon Li  
1340 Treat Blvd #550, Walnut Creek, CA 94597  
Tel: 628-221-7849

0 100 200 400 Feet

**Figure 3  
Plot Plan**

Sheet 24 of 27

PG&E Humboldt County Bundled CDP

Environmental Resources Management  
www.erm.com

