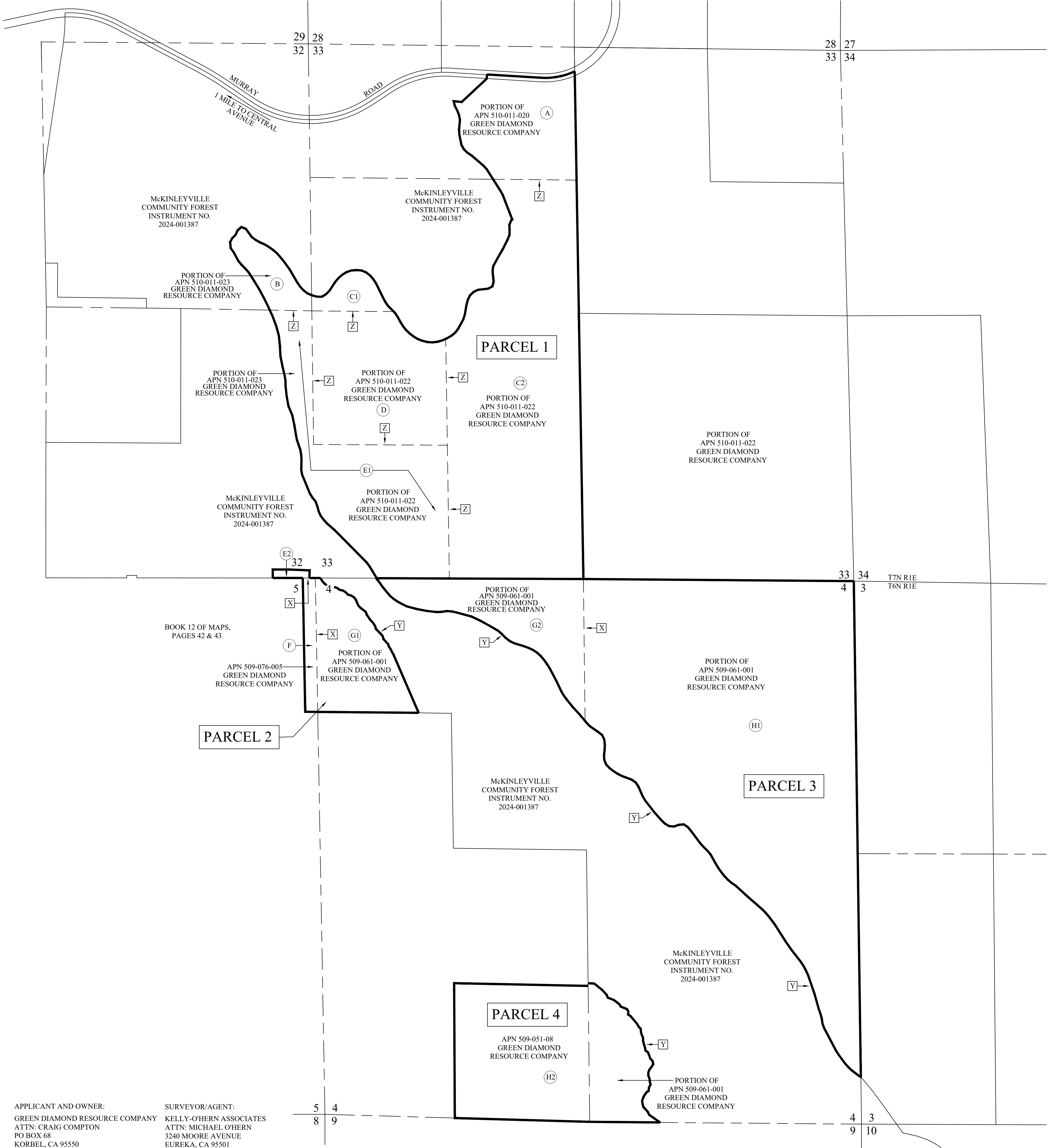


PARCEL	AREAS BEFORE LLA				AREAS AFTER LLA				
	TPZ	AE	AG-B-5(5)-WR	R-1-B-2-T	PARCEL	TPZ	AE	AG-B-5(5)-WR	R-1-B-2-T
(A)	24.57 ACRES +/-	0 ACRES +/-	0 ACRES +/-	0 ACRES +/-	PARCEL 1	189.94 ACRES +/-	28.59 ACRES +/-	0 ACRES +/-	0 ACRES +/-
(B)	7.08 ACRES +/-	0 ACRES +/-	0 ACRES +/-	0 ACRES +/-	PARCEL 2	0 ACRES +/-	22.28 ACRES +/-	0.60 ACRES +/-	3.39 ACRES +/-
(C1)	5.26 ACRES +/-	0 ACRES	0 ACRES +/-	0 ACRES +/-	PARCEL 3	181.30 ACRES +/-	19.50 ACRES +/-	0 ACRES +/-	0 ACRES +/-
(C2)	75.00 ACRES +/-	28.59 ACRES +/-	0 ACRES +/-	0 ACRES +/-	PARCEL 4	57.04 ACRES +/-	0 ACRES +/-	0 ACRES +/-	0 ACRES +/-
(D)	37.56 ACRES +/-	0 ACRES +/-	0 ACRES +/-	0 ACRES +/-					
(E1)	40.47 ACRES +/-	0 ACRES	0 ACRES +/-	0 ACRES +/-					
(E2)	0 ACRES +/-	0 ACRES +/-	0.6 ACRES +/-	0 ACRES +/-					
(F)	0 ACRES +/-	0 ACRES +/-	0 ACRES +/-	3.39 ACRES +/-					
(G1)	0 ACRES +/-	22.28 ACRES +/-	0 ACRES +/-	0 ACRES +/-					
(G2)	3.4 ACRES +/-	19.50 ACRES	0 ACRES +/-	0 ACRES +/-					
(H1)	177.9 ACRES +/-	0 ACRES +/-	0 ACRES +/-	0 ACRES +/-					
(H2)	57.04 ACRES +/-	0 ACRES +/-	0 ACRES +/-	0 ACRES +/-					



APPLICANT AND OWNER: GREEN DIAMOND RESOURCE COMPANY
 ATTN: CRAIG COMPTON
 PO BOX 68
 KORBEL, CA 95550
 (707)668-4424

SURVEYOR/AGENT: KELLY-O'HERN ASSOCIATES
 ATTN: MICHAEL O'HERN
 3240 MOORE AVENUE
 EUREKA, CA 95501
 (707)442-7283

APN 509-051-008, 509-061-001, 509-076-005
 510-011-020, 510-011-022, 510-011-023

**LOT LINE ADJUSTMENT
 AND MERGER MAP**
 FOR
GREEN DIAMOND RESOURCE COMPANY
 IN
 SECTIONS 4 & 5 T6N, R1E, HUMBOLDT MERIDIAN
 SECTIONS 32 & 33 T7N, R1E, HUMBOLDT MERIDIAN
 IN THE UNINCORPORATED AREA OF HUMBOLDT COUNTY
 JUNE 2024 SCALE 1" = 500'

HUMBOLDT COUNTY
 STATE OF CALIFORNIA

KELLY-O'HERN ASSOCIATES
 EUREKA, CALIFORNIA

PARCEL ORIGINS

- (A) PARCEL C OF NOTICE OF LOT LINE ADJUSTMENT AND CERTIFICATE OF SUBDIVISION COMPLIANCE RECORDED IN INSTRUMENT NO. 2023-011189 EXCEPTING INSTRUMENT NO. 2024-001387.
- (B) INSTRUMENT NO. 2023-014382 EXCEPTING INSTRUMENT NO. 2024-001387.
- (C) PARCEL SIX OF CERTIFICATE OF SUBDIVISION COMPLIANCE RECORDED IN INSTRUMENT NO. 2022-009535 EXCEPTING INSTRUMENT NO. 2024-001387.
- (D) PARCEL EIGHT OF CERTIFICATE OF SUBDIVISION COMPLIANCE RECORDED IN INSTRUMENT NO. 2022-009535 EXCEPTING INSTRUMENT NO. 2024-001387.
- (E) PARCEL FIVE OF CERTIFICATE OF SUBDIVISION COMPLIANCE RECORDED IN INSTRUMENT NO. 2022-009535 EXCEPTING INSTRUMENT NO. 2024-001387.
- (F) PARCEL EIGHTEEN OF CERTIFICATE OF SUBDIVISION COMPLIANCE RECORDED IN INSTRUMENT NO. 2022-009535.
- (G) PARCEL SEVENTEEN OF CERTIFICATE OF SUBDIVISION COMPLIANCE RECORDED IN INSTRUMENT NO. 2022-009535 EXCEPTING INSTRUMENT NO. 2024-001387.
- (H) PARCEL NINETEEN OF CERTIFICATE OF SUBDIVISION COMPLIANCE RECORDED IN INSTRUMENT NO. 2022-009535 EXCEPTING INSTRUMENT NO. 2024-001387.

NOTES

1. THIS TENTATIVE MAP PROPOSES A MERGER BETWEEN EIGHT EXISTING PARCELS RESULTING IN FOUR PARCELS AND A SUBSEQUENT LOT LINE ADJUSTMENT BETWEEN THESE FOUR PARCELS. THE PURPOSE OF THIS LOT LINE ADJUSTMENT AND MERGER IS TO ADDRESS THE REMNANT PARCELS CREATED BY THE RECORDATION OF INSTRUMENT NO. 2024-001387 (McKINLEYVILLE COMMUNITY FOREST).
2. LAND IS VACANT AND USED FOR TIMBER PRODUCTION.
3. NO TOPOGRAPHIC INFORMATION WAS COLLECTED OR SHOWN ON THIS MAP.
4. PROPERTY LINE INFORMATION: CALCULATED PROPERTY LINES ARE SHOWN HEREON AND ARE APPROXIMATE.
5. AREAS SHOWN HEREON ARE APPROXIMATE FROM HUMBOLDT COUNTY PLANNING (LETTER DATED JULY 5, 2023 PLN-2023-18096).

LOT LINE ADJUSTMENT SUMMARY

- (X) LINE TO BE DELETED BY LOT LINE ADJUSTMENT
- (Y) LINE TO BE ADDED BY LOT LINE ADJUSTMENT
- (Z) LINE TO BE DELETED BY MERGER