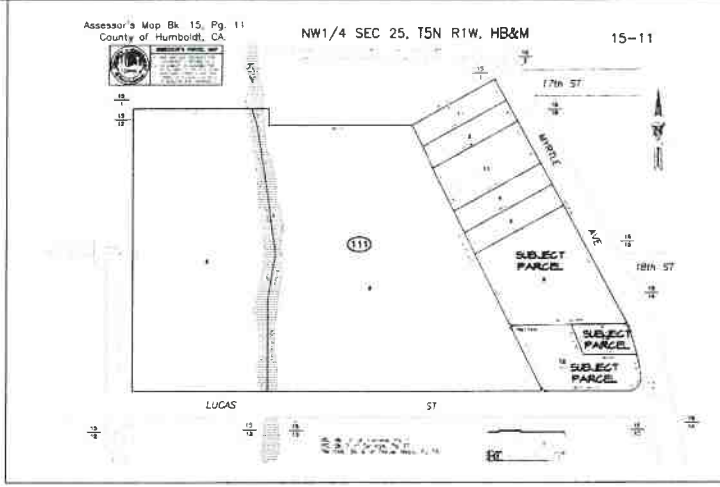
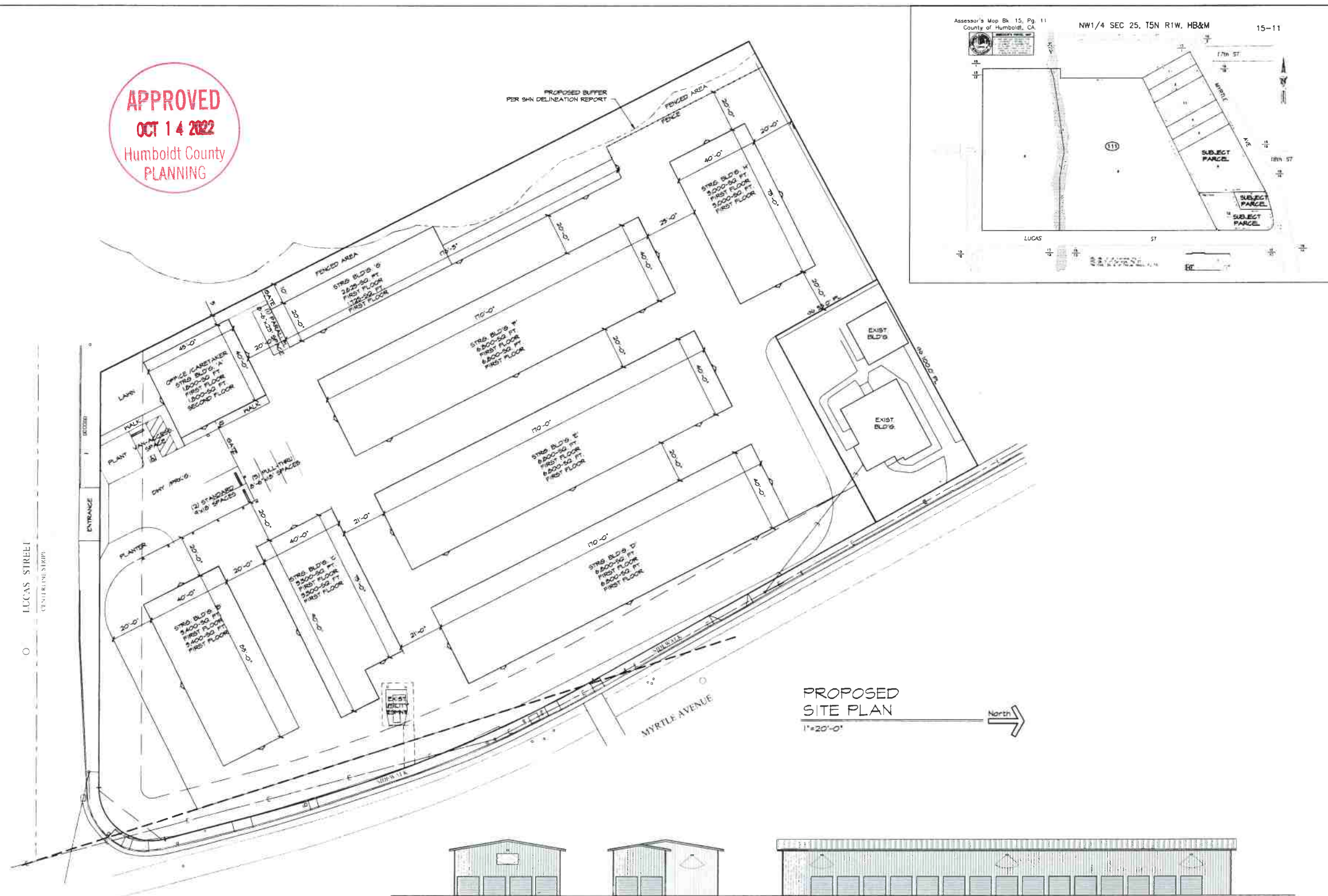


APPROVED
OCT 14 2022
 Humboldt County
 PLANNING



REVISIONS	BY
10/14/22	SJA

Ask Mrs. Prathuma *Prathuma* *Prathuma* *Prathuma*
 SJA
 Ask Mrs. Prathuma *Prathuma* *Prathuma* *Prathuma*

PAYE SELF STORAGE FACILITY
 APR. 015-111-012-013-008
 1850 MYRTLE AVE. - EUREKA, CA
 PROPOSED SITE PLAN
 FOR: JIM PAYE
 C/O. PACIFIC BUILDERS

Date	MAR. 11, '22
Scale	AS NOTED
Design	SJA
Drawn	SJA
Job	
Sheet	2