

**FUNDING SOURCE**

THIS PROJECT IS FUNDED BY THE US DEPARTMENT OF TRANSPORTATION, FEDERAL HIGHWAY ADMINISTRATION EMERGENCY RELIEF PROGRAM



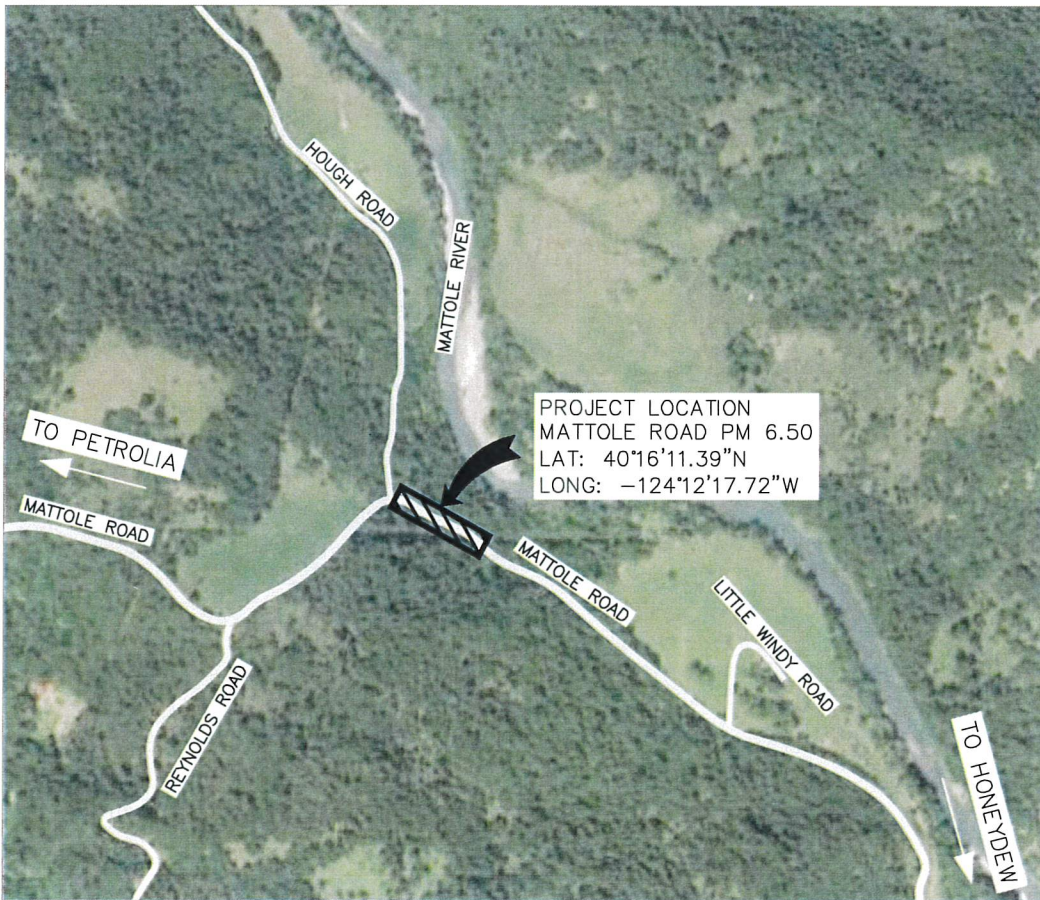
**NOTES**

1. THE CONTRACTOR SHALL HAVE A CLASS "A" LICENSE FOR THIS PROJECT.
2. STANDARD PLAN LIST APPLICABLE TO THIS CONTRACT INCLUDED IN THE SPECIAL PROVISIONS.
3. GEOTECHNICAL REPORT: CRAWFORD AND ASSOCIATES, SEPTEMBER 2019.

**ABBREVIATIONS**

(TO SUPPLEMENT CALTRANS STANDARD PLANS A3A, A3B & A3C)

- APN ASSESSORS PARCEL NUMBER
- CL CENTERLINE
- (E) EXISTING
- EL ELEVATION
- PVI POINT OF VERTICAL CURVATURE
- K K-VALUE
- S SLOPE
- TEL TELEPHONE



**VICINITY MAP**  
NOT TO SCALE



GHD Inc.  
718 Third Street  
Eureka California 95501 USA  
T 1 707 443 8326 F 1 707 444 8330 W www.ghd.com



BAR IS ONE INCH ON ORIGINAL DRAWING  
  
IF NOT ONE INCH ON THIS SHEET, ADJUST SCALES ACCORDINGLY

ROAD NAME: MATTOLE ROAD	DESIGN SECTION: ENGINEERING
ROAD NO: F3C010	DESIGNED BY: C.PROVO
MILE POST: 6.50	DRAWN BY: C.PROVO
PROJECT NO: ER-32LO(119)	REVIEWED BY: J.WOLF
CONTRACT NO: 217225	APPROVED BY: J.WOLF
PLOT DATE: 10/27/2020	

COUNTY OF HUMBOLDT DEPARTMENT OF PUBLIC WORKS
STORM DAMAGE REPAIR MATTOLE ROAD PM 6.50
COVER SHEET, SHEET INDEX, AND MAPS

SHEET  
1  
OF  
14

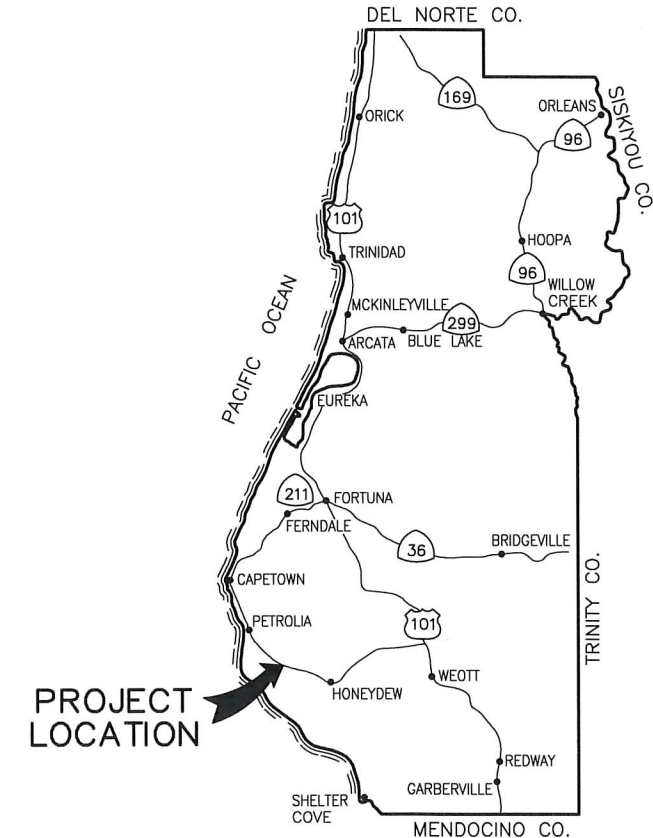
**COUNTY OF HUMBOLDT  
DEPARTMENT OF PUBLIC WORKS  
PROJECT PLANS FOR CONSTRUCTION OF  
STORM DAMAGE REPAIRS  
MATTOLE ROAD (F3C010) AT P.M. 6.50  
PROJECT NO. ER-32LO(119)  
CONTRACT NO. 217225**

TO BE SUPPLEMENTED BY STATE OF CALIFORNIA DEPARTMENT OF TRANSPORTATION 2018 STANDARD PLANS, 2018 STANDARD SPECIFICATIONS, AND LATEST REVISED STANDARD PLANS AND SPECIFICATIONS.



**SHEET LIST TABLE**

SHEET	SHEET TITLE
1	COVER SHEET, SHEET INDEX, AND MAPS
2	TRAFFIC CONTROL, STAGING/STOCKPILE LOCATIONS, AND QUANTITIES
3	SURVEY CONTROL PLAN
4	TYPICAL SECTIONS
5	ROADWAY PLAN - STA "R" 1+00 TO STA "R" 4+00
6	ROADWAY PLAN - STA "R" 4+00 TO STA "R" 6+95
7	ROADWAY PROFILE AND SUPERELEVATION
8	DRAINAGE PROFILES
9	CONSTRUCTION DETAILS
10	EROSION CONTROL PLAN
11	CROSS SECTIONS - 1 OF 4
12	CROSS SECTIONS - 2 OF 4
13	CROSS SECTIONS - 3 OF 4
14	CROSS SECTIONS - 4 OF 4



PROJECT LOCATION

**LOCATION MAP**  
NOT TO SCALE



*J. Wolf*  
JOSH WOLF  
RCE 70358  
CIVIL ENGINEER  
GHD INC.  
10-27-2020  
DATE



**APPROVED**  
*Tony R. Seghetti*  
TONY R. SEGHETTI  
RCE 63714  
DEPUTY DIRECTOR OF ENGINEERING  
COUNTY OF HUMBOLDT  
10/27/20  
DATE



GHD Inc.  
718 Third Street  
Eureka California 95501 USA  
T 1 707 443 8326 F 1 707 444 8330 W www.ghd.com



BAR IS ONE INCH ON ORIGINAL DRAWING  
IF NOT ONE INCH ON THIS SHEET, ADJUST SCALES ACCORDINGLY

ROAD NAME: MATTOLE ROAD	DESIGN SECTION: ENGINEERING
ROAD NO: F3C010	DESIGNED BY: C.PROVO
MILE POST: 6.50	DRAWN BY: C.PROVO
PROJECT NO.: ER-32LO(119)	REVIEWED BY: J.WOLF
CONTRACT NO.: 217225	APPROVED BY: J.WOLF
PLOT DATE: 10/27/2020	

COUNTY OF HUMBOLDT DEPARTMENT OF PUBLIC WORKS
STORM DAMAGE REPAIR MATTOLE ROAD PM 6.50
TRAFFIC CONTROL, STAGING/STOCKPILE LOCATIONS, AND QUANTITIES

SHEET 2 OF 14

**QUANTITIES**

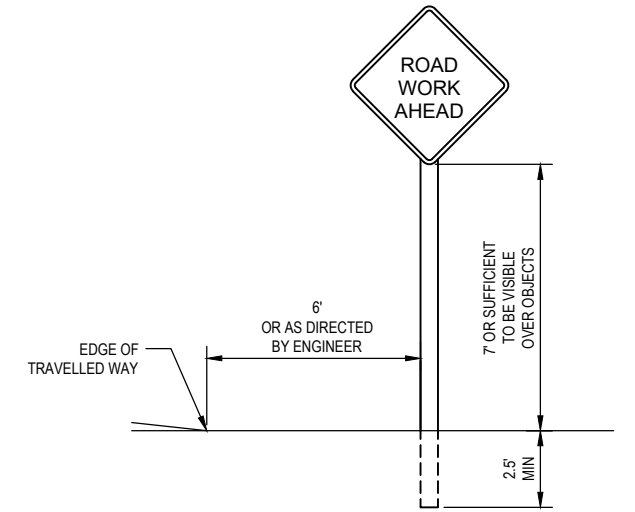
ITEM NO.	ITEM CODE	ITEM DESCRIPTION	UNIT	QTY
1	120090	Construction Area Signs	LS	1
2	120100	Traffic Control System	LS	1
3	120202	Portable Signal System	LS	1
4	129000	Temporary Railing (Type K)	EA	35
5	130100	Job Site Management	LS	1
6	130200	Prepare Water Pollution Control Program	LS	1
7	130610	Temporary Check Dam	LF	18
8	130620	Temporary Drainage Inlet Protection	EA	2
9	130680	Temporary Silt Fence	LF	630
10	170103	Clearing and Grubbing (LS)	LS	1
11	190101	Roadway Excavation	CY	4800
12	198050	Embankment	CY	2300
13	198250A	Geosynthetic Reinforcement (Primary Reinforcement)	SY	3160
14	198250B	Geosynthetic Reinforcement (Secondary Reinforcement)	SY	80
15	210212	Dry Seed (SQFT)	SQFT	3550
16	210280	Rolled Erosion Control Product (Blanket)	SQFT	3550
17	210350	Fiber Rolls	LF	180
18	260203	Class 2 Aggregate Base (CY)	CY	470
19	390132	Hot Mix Asphalt (Type A)	TON	270
20	394076	Place Hot Mix Asphalt Dike (Type E)	LF	213
21	641107A	18" Plastic Pipe (Heat-Fused HDPE)	LF	112
22	680902	6" Perforated Plastic Pipe Underdrain	LF	441
23	680903	6" Non-Perforated Plastic Pipe Underdrain	LF	145
24	682022A	Class 1 Permeable Material (Drainage Blanket)	CY	610
25	682022B	Class 1 Permeable Material (Trenched Underdrain)	CY	300
26	691900	Flume Downdrain	LF	7
27	692101	Tapered Inlet	EA	1
28	692361	Flume Anchor Assembly	EA	1
29	692381	Concrete Anchor and Cable Assembly	EA	2
30	700638	36" Corrugated Steel Pipe Inlet (.079" Thick)	LF	8
31	710132	Remove Culvert (LF)	LF	89
32	723080	Rock Slope Protection (60 lb, Class II, Method B) (CY)	CY	12
33	729011	Rock Slope Protection Fabric (Class 8)	SY	41
34	840505A	4" Thermoplastic Traffic Stripe	LF	595
35	999990	Mobilization	LS	1

**STATIONARY MOUNTED CONSTRUCTION AREA SIGNS**

SIGN CODE	PANEL SIZE	SIGN MESSAGE	NUMBER & POST SIZE	NO. OF SIGNS
R10-6	24"x36"	STOP HERE ON RED	(1) 4"x4"	2
W3-3	36"x36"	SIGNAL WARNING	(1) 4"x4"	2
W20-4	36"x36"	ONE LANE ROAD AHEAD	(1) 4"x4"	2
W20-1	36"x36"	ROAD WORK AHEAD	(1) 4"x4"	2
G20-2	36"x18"	END ROAD WORK	(1) 4"x4"	2

**CONSTRUCTION SIGN NOTES:**

- EXACT SIGN LOCATIONS AND POSITIONS TO BE APPROVED BY THE ENGINEER.
- ALL WARNING SIGNS SHALL HAVE A BLACK LEGEND AND BORDER ON ORANGE BACKGROUND.
- ALTERNATIVE POST CONFIGURATION TO BE APPROVED BY ENGINEER.
- REFER TO FIGURE 6H-12 FOR LANE CLOSURE ON A TWO-LANE ROAD USING TRAFFIC CONTROL SIGNALS (TA-12).
- ALL TRAFFIC CONTROL SHALL BE IN ACCORDANCE WITH THE LATEST EDITION OF THE CALIFORNIA MANUAL ON UNIFORM TRAFFIC CONTROL DEVICES (CAMUTCD) AND CALTRANS 2018 STANDARD PLANS.
- MAINTAIN ALL SIGNS THROUGHOUT DURATION OF CONSTRUCTION.
- KEEP A MINIMUM OF 1 TRAFFIC LANE AT LEAST 10' WIDE OPEN FOR TRAFFIC, EXCEPT THE FULL WIDTH OF THE TRAVELED WAY MUST BE OPEN WHEN CONSTRUCTION OPERATIONS ARE NOT ACTIVE OR AN APPROVED TRAFFIC CONTROL PLAN IS IN PLACE.
- PROVIDE FLAGGERS AS REQUIRED TO ACCOMMODATE CONSTRUCTION.



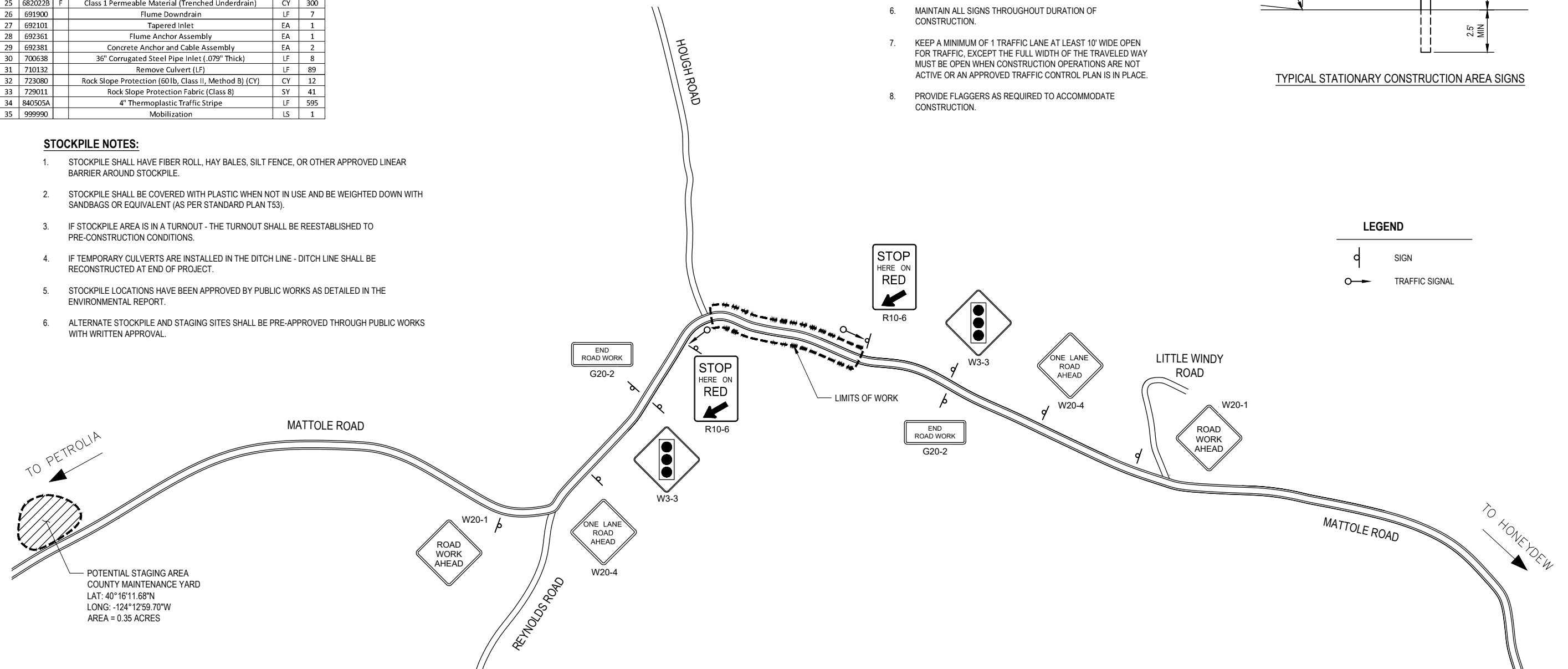
TYPICAL STATIONARY CONSTRUCTION AREA SIGNS

**STOCKPILE NOTES:**

- STOCKPILE SHALL HAVE FIBER ROLL, HAY BALES, SILT FENCE, OR OTHER APPROVED LINEAR BARRIER AROUND STOCKPILE.
- STOCKPILE SHALL BE COVERED WITH PLASTIC WHEN NOT IN USE AND BE WEIGHTED DOWN WITH SANDBAGS OR EQUIVALENT (AS PER STANDARD PLAN T53).
- IF STOCKPILE AREA IS IN A TURNOUT - THE TURNOUT SHALL BE REESTABLISHED TO PRE-CONSTRUCTION CONDITIONS.
- IF TEMPORARY CULVERTS ARE INSTALLED IN THE DITCH LINE - DITCH LINE SHALL BE RECONSTRUCTED AT END OF PROJECT.
- STOCKPILE LOCATIONS HAVE BEEN APPROVED BY PUBLIC WORKS AS DETAILED IN THE ENVIRONMENTAL REPORT.
- ALTERNATE STOCKPILE AND STAGING SITES SHALL BE PRE-APPROVED THROUGH PUBLIC WORKS WITH WRITTEN APPROVAL.

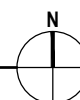
**LEGEND**

- SIGN
- TRAFFIC SIGNAL



**TRAFFIC CONTROL PLAN**

NOT TO SCALE





GHD Inc.  
718 Third Street  
Eureka California 95501 USA  
T 1 707 443 8326 F 1 707 444 8330 W www.ghd.com



BAR IS ONE INCH ON ORIGINAL DRAWING  
IF NOT ONE INCH ON THIS SHEET, ADJUST SCALES ACCORDINGLY

ROAD NAME: MATTOLE ROAD  
ROAD NO: F3C010  
MILE POST: 6.50  
PROJECT NO.: ER-32LO(119)  
CONTRACT NO.: 217225  
PLOT DATE: 10/27/2020

DESIGN SECTION ENGINEERING  
DESIGNED BY: C.PROVO  
DRAWN BY: C.PROVO  
REVIEWED BY: J.WOLF  
APPROVED BY: J.WOLF

COUNTY OF HUMBOLDT  
DEPARTMENT OF PUBLIC WORKS  
STORM DAMAGE REPAIR MATTOLE ROAD PM 6.50  
SURVEY CONTROL PLAN

SHEET 3 OF 14

**SURVEY CONTROL NOTES**

1. TOPOGRAPHIC AND RIGHT-OF-WAY SURVEY PROVIDED BY THE COUNTY OF HUMBOLDT, DEPARTMENT OF PUBLIC WORKS (FIELD WORK DATE: 10/26/18), WITH SUPPLEMENTAL SURVEY BY POINTS WEST SURVEYING (FIELD WORK DATE: 2/20/20).
2. THE BASIS OF BEARINGS SHOWN HEREON ARE BASED ON HOLDING A COMPASS BEARING OF SOUTH 63° EAST BETWEEN POINT CP1 & CP3.
3. THE BASIS OF ELEVATIONS SHOWN HEREON IS BASED UPON AN ASSUMED ELEVATION OF 5000.00 FEET AT POINT CP1.
4. DISTANCES SHOWN HEREON ARE IN U.S. SURVEY FEET AND DECIMALS THEREOF.
5. THE RIGHT OF WAY IN THIS AREA IS PER ROAD REGISTER 1 PAGE 176. THE CENTERLINE OF THE PRESENT DAY ROAD PAVEMENT IS ACCEPTED AS THE CENTERLINE OF THE RIGHT OF WAY BEING 50 FEET WIDE, 25 FEET EACH SIDE OF CENTERLINE.
6. UNDERGROUND UTILITIES RESEARCH WAS NOT PERFORMED.
7. TREES UNDER 12 INCHES EXIST IN SURVEYED AREA AND ARE NOT SHOWN.

**GENERAL NOTES**

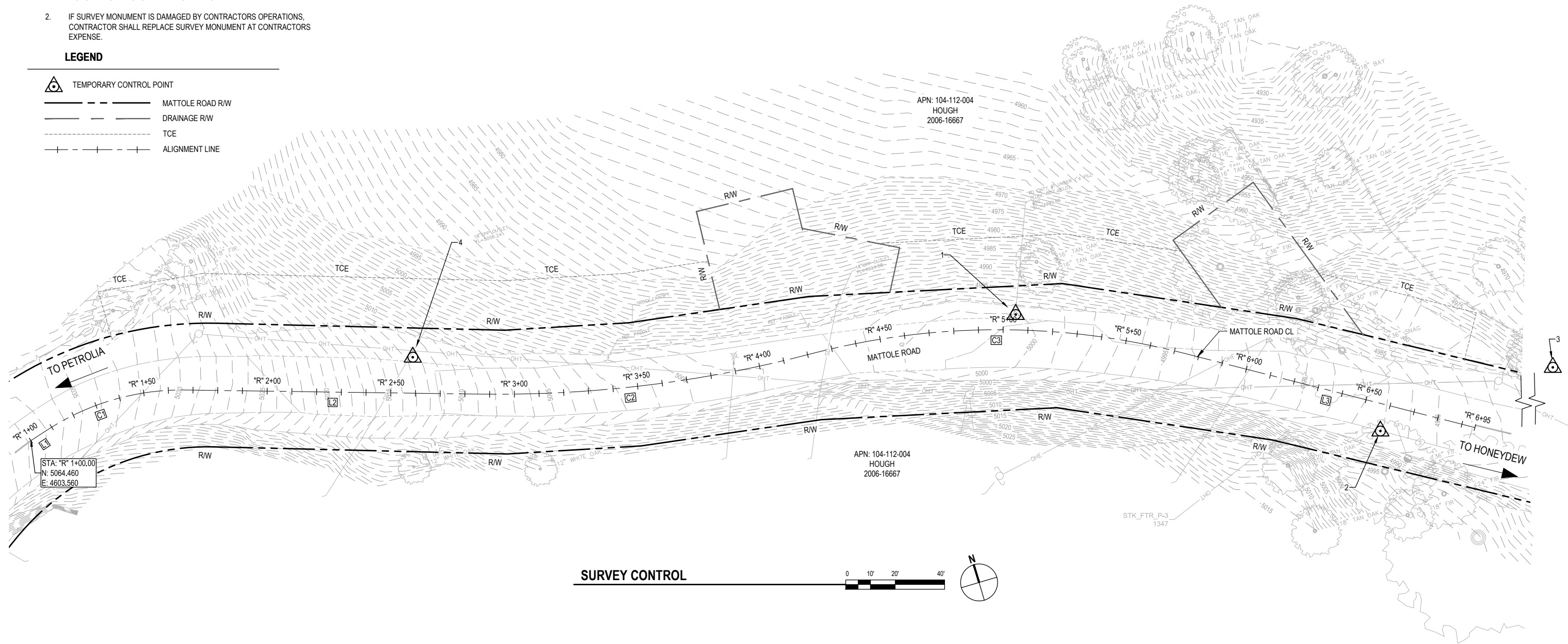
1. CONTRACTOR MUST COMPLY WITH BUSINESS AND PROFESSIONS CODE SECTION 8771 (b) REGARDING REFERENCING, PRESERVING AND RECONSTRUCTING SURVEY MONUMENTS, WHETHER OR NOT SURVEY MONUMENTS ARE SHOWN IN THESE PLANS.
2. IF SURVEY MONUMENT IS DAMAGED BY CONTRACTORS OPERATIONS, CONTRACTOR SHALL REPLACE SURVEY MONUMENT AT CONTRACTORS EXPENSE.

**LEGEND**

- TEMPORARY CONTROL POINT
- MATTOLE ROAD R/W
- DRAINAGE R/W
- TCE
- ALIGNMENT LINE

MATTOLE ROAD CONSTRUCTION CENTERLINE GEOMETRY - "R" ALIGNMENT						
Segment	Type	Length	Radius	Direction	Start Station	End Station
L1	LINE	7.69	-	N73° 22' 24.27"E	"R" 1+00.00	"R" 1+07.69
C1	CURVE	59.27	100.00		"R" 1+07.69	"R" 1+66.96
L2	LINE	119.21	-	S72° 39' 53.13"E	"R" 1+66.96	"R" 2+86.18
C2	CURVE	135.11	500.00		"R" 2+86.18	"R" 4+21.29
C3	CURVE	151.82	300.00		"R" 4+21.29	"R" 5+73.11
L3	LINE	122.33	-	S59° 09' 07.67"E	"R" 5+73.11	"R" 6+95.43

POINT TABLE				
POINT#	EASTINGS	NORTHINGS	ELEVATION	DESCRIPTION
1	5000.00	5000.00	5000.00	CP SET 80D SHINER
2	5128.04	4912.85	4986.97	CP SET G IN SPIKE
3	5271.28	4861.78	4978.80	CP SET G IN SPIKE
4	4761.24	5052.85	5012.21	CP SET 80D



**SURVEY CONTROL**





GHD Inc.  
718 Third Street  
Eureka California 95501 USA  
T 1 707 443 8326 F 1 707 444 8330 W www.ghd.com

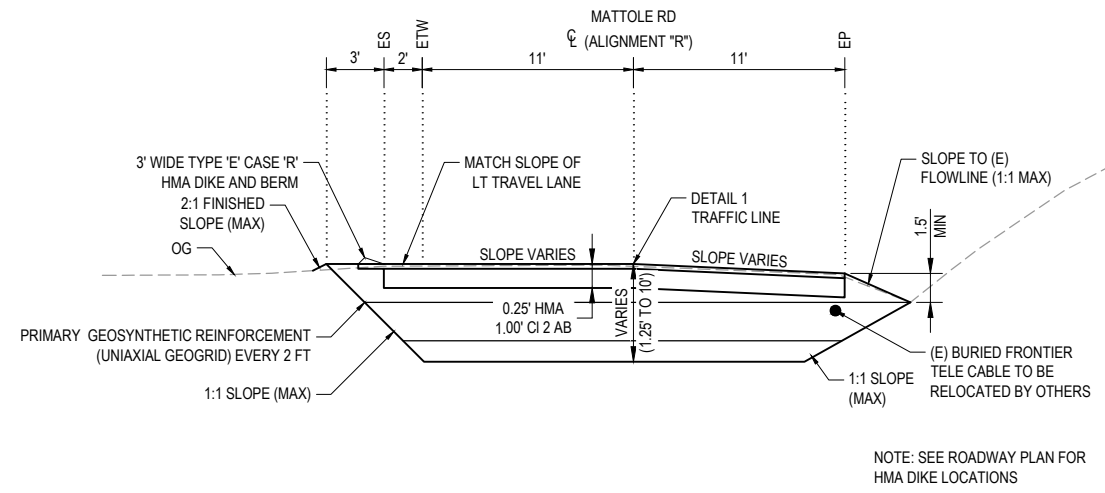


BAR IS ONE INCH ON ORIGINAL DRAWING  
IF NOT ONE INCH ON THIS SHEET, ADJUST SCALES ACCORDINGLY

ROAD NAME: MATTOLE ROAD	DESIGN SECTION: ENGINEERING
ROAD NO: F3C010	DESIGNED BY: C.PROVO
MILE POST: 6.50	DRAWN BY: C.PROVO
PROJECT NO.: ER-32L0(119)	REVIEWED BY: J.WOLF
CONTRACT NO.: 217225	APPROVED BY: J.WOLF
PLOT DATE: 10/27/2020	

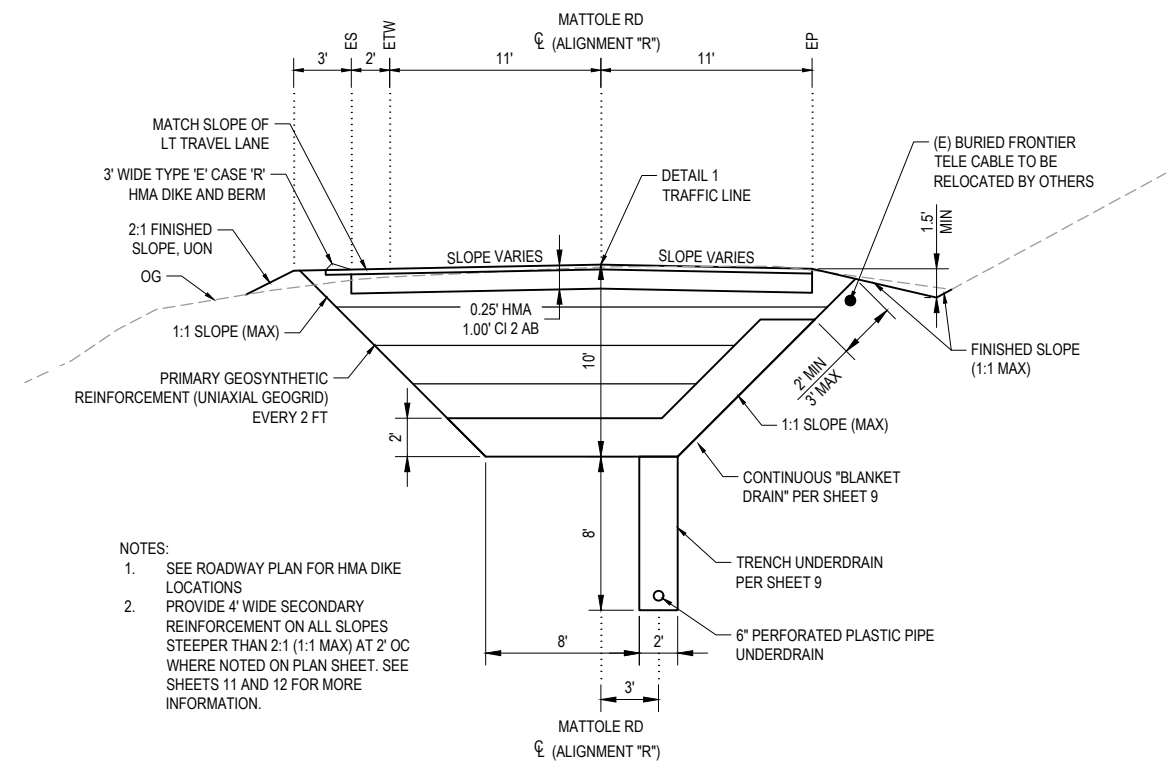
COUNTY OF HUMBOLDT DEPARTMENT OF PUBLIC WORKS
<b>STORM DAMAGE REPAIR MATTOLE ROAD PM 6.50</b>
TYPICAL SECTIONS

SHEET 4 OF 14



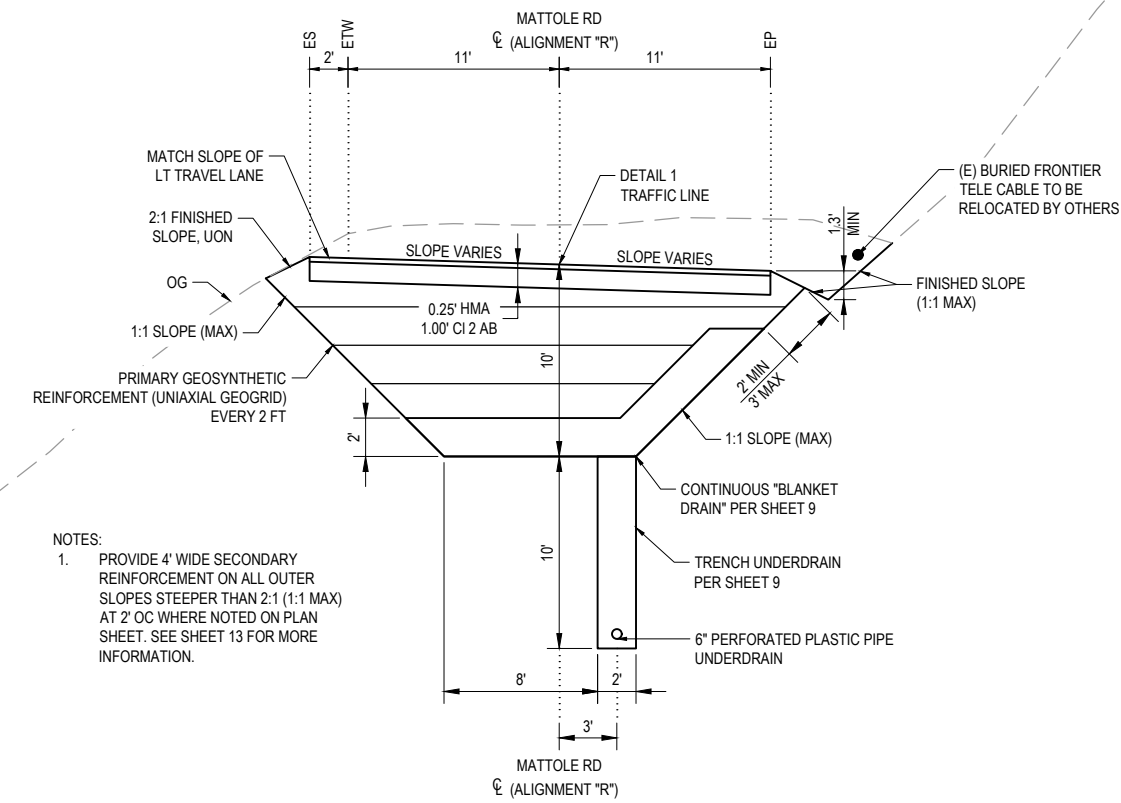
**TYPICAL SECTION - MATTOLE ROAD**  
NOT TO SCALE STA "R" 1+50 - 1+72.50 & STA "R" 6+13.50 - 6+70

NOTE: SEE ROADWAY PLAN FOR HMA DIKE LOCATIONS



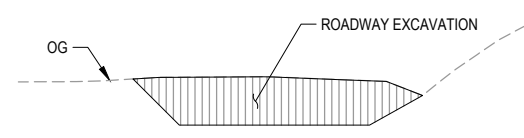
- NOTES:
- SEE ROADWAY PLAN FOR HMA DIKE LOCATIONS
  - PROVIDE 4' WIDE SECONDARY REINFORCEMENT ON ALL SLOPES STEEPER THAN 2:1 (1:1 MAX) AT 2' OC WHERE NOTED ON PLAN SHEET. SEE SHEETS 11 AND 12 FOR MORE INFORMATION.

**TYPICAL SECTION - MATTOLE ROAD**  
NOT TO SCALE STA "R" 1+72.50 - 4+50

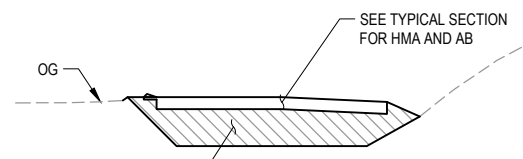


**TYPICAL SECTION - MATTOLE ROAD**  
NOT TO SCALE STA "R" 4+50 - STA "R" 6+13.50

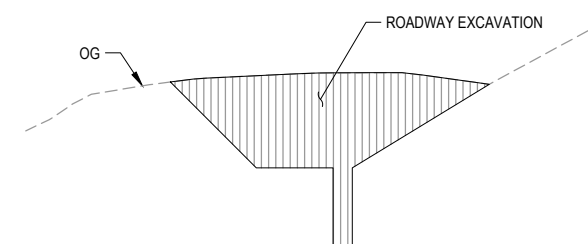
- NOTES:
- PROVIDE 4' WIDE SECONDARY REINFORCEMENT ON ALL OUTER SLOPES STEEPER THAN 2:1 (1:1 MAX) AT 2' OC WHERE NOTED ON PLAN SHEET. SEE SHEET 13 FOR MORE INFORMATION.



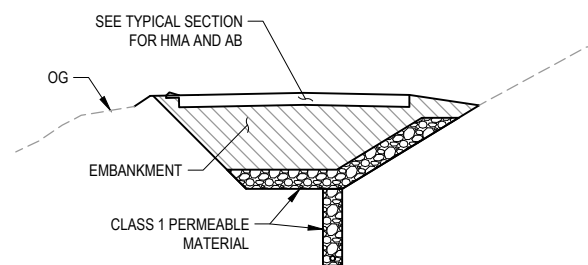
**LIMITS OF PAYMENT - CUT**  
NOT TO SCALE



**LIMITS OF PAYMENT - FILL**  
NOT TO SCALE



**LIMITS OF PAYMENT - CUT**  
NOT TO SCALE



**LIMITS OF PAYMENT - FILL**  
NOT TO SCALE

**LEGEND**

ROADWAY EXCAVATION	
EMBANKMENT	
CLASS 1 PERMEABLE MATERIAL	



GHD Inc.  
718 Third Street  
Eureka California 95501 USA  
T 1 707 443 8326 F 1 707 444 8330 W www.ghd.com



ROAD NAME: MATTOLE ROAD	DESIGN SECTION
ROAD NO: F3C010	ENGINEERING
MILE POST: 6.50	DESIGNED BY: C.PROVO
PROJECT NO.: ER-32L0(119)	DRAWN BY: C.PROVO
CONTRACT NO.: 217225	REVIEWED BY: J.WOLF
PLOT DATE: 10/27/2020	APPROVED BY: J.WOLF

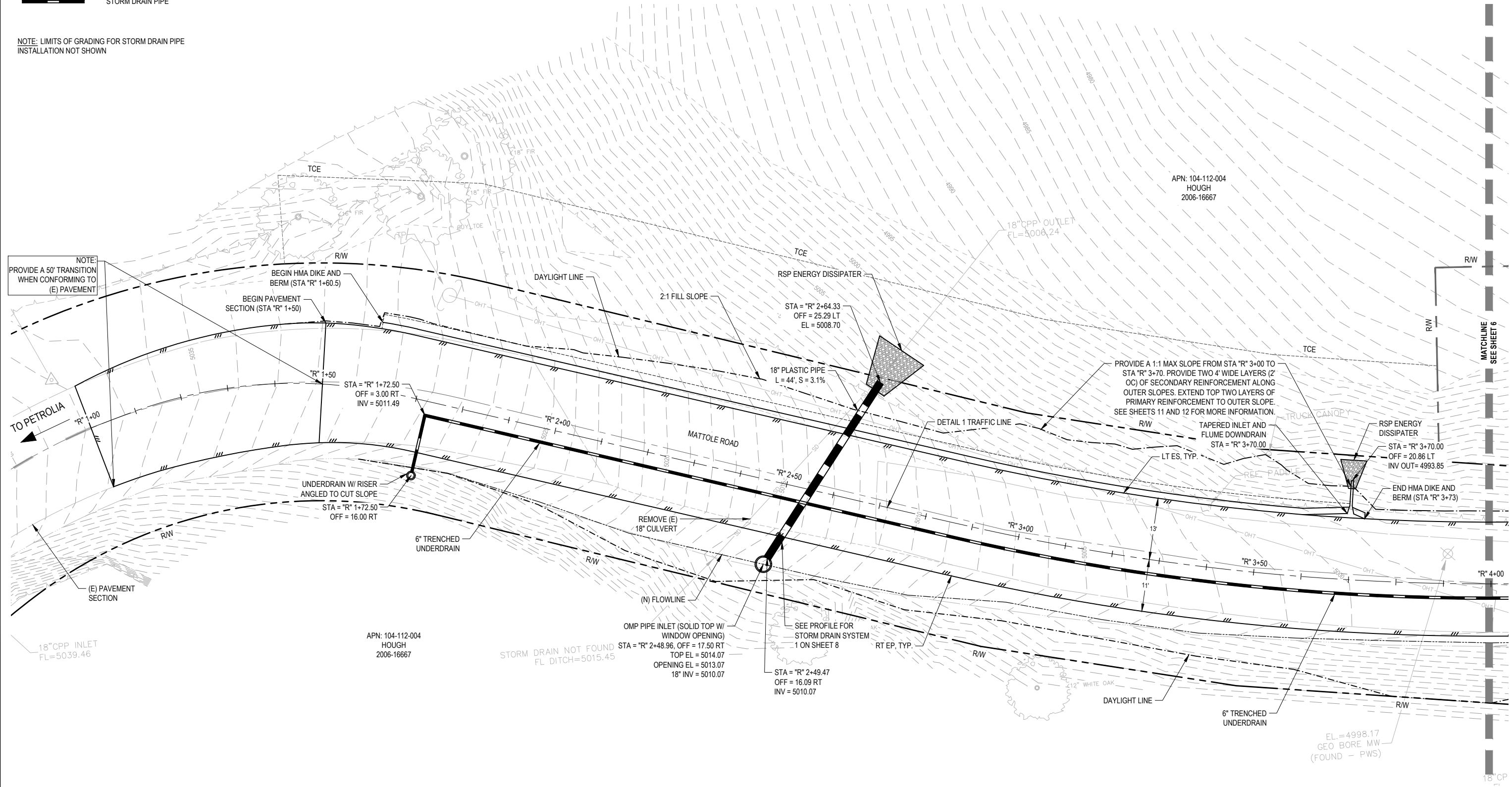
COUNTY OF HUMBOLDT DEPARTMENT OF PUBLIC WORKS
STORM DAMAGE REPAIR MATTOLE ROAD PM 6.50
ROADWAY PLAN - STA "R" 1+00 TO STA "R" 4+00

SHEET  
5  
OF  
14

**LEGEND**

- EDGE OF HMA PAVEMENT SECTION
- HMA DIKE AND BERM
- RSP ENERGY DISSIPATER
- STORM DRAIN PIPE

NOTE: LIMITS OF GRADING FOR STORM DRAIN PIPE INSTALLATION NOT SHOWN



**MATTOLE ROAD PM 6.50 PLAN VIEW -  
STA "R" 1+00 TO STA "R" 4+00**



NOTE:  
PROVIDE A 50' TRANSITION  
WHEN CONFORMING TO  
(E) PAVEMENT

PROVIDE A 1:1 MAX SLOPE FROM STA "R" 3+00 TO STA "R" 3+70. PROVIDE TWO 4' WIDE LAYERS (2' OC) OF SECONDARY REINFORCEMENT ALONG OUTER SLOPES. EXTEND TOP TWO LAYERS OF PRIMARY REINFORCEMENT TO OUTER SLOPE. SEE SHEETS 11 AND 12 FOR MORE INFORMATION.

APN: 104-112-004  
HOUGH  
2006-16667

EL = 4998.17  
GEO BORE MW  
(FOUND - PWS)

MATCHLINE  
SEE SHEET 6

18" CP



GHD Inc.  
718 Third Street  
Eureka California 95501 USA  
T 1 707 443 8326 F 1 707 444 8330 W www.ghd.com

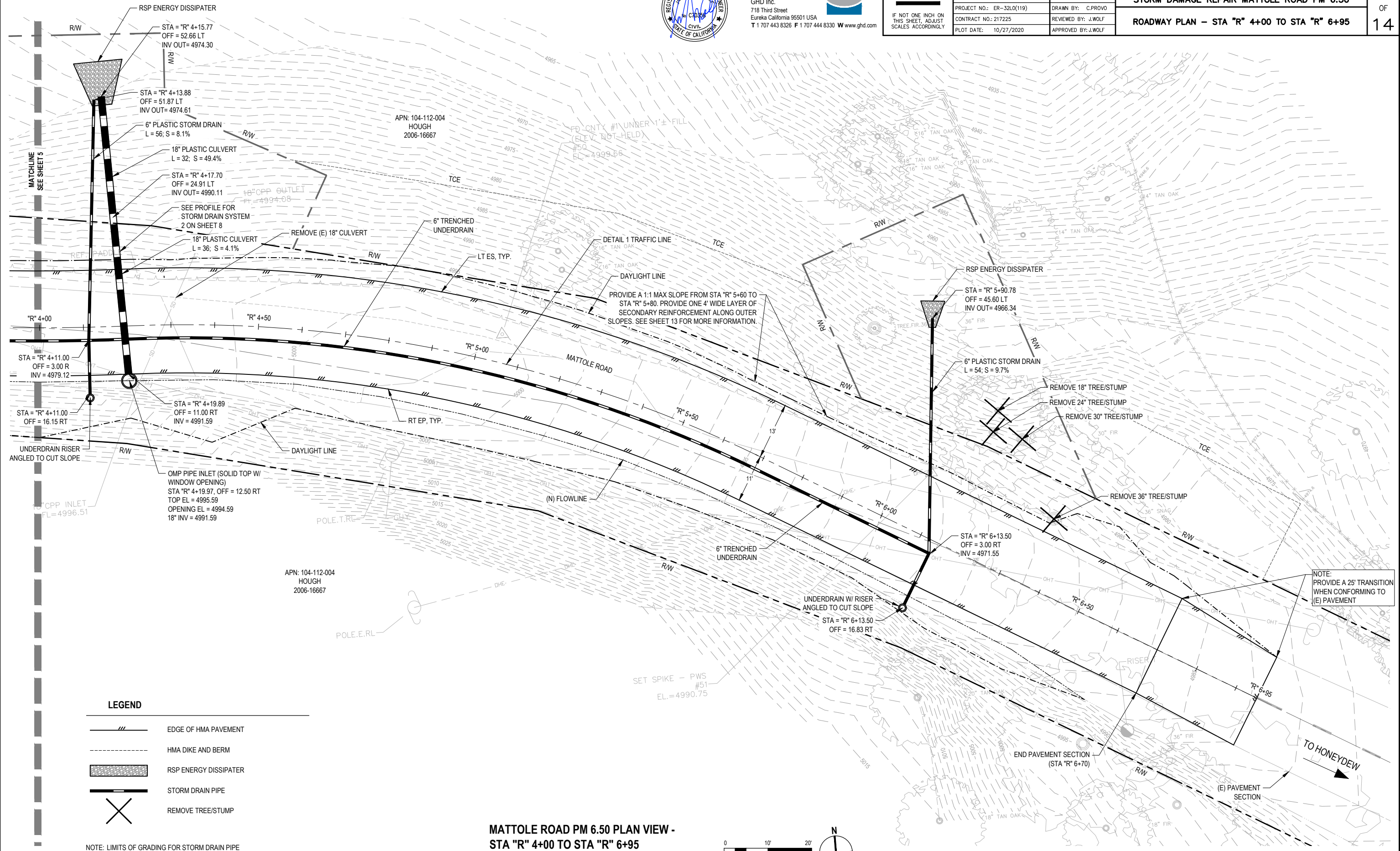


BAR IS ONE INCH ON ORIGINAL DRAWING  
IF NOT ONE INCH ON THIS SHEET, ADJUST SCALES ACCORDINGLY

ROAD NAME: MATTOLE ROAD	DESIGN SECTION: ENGINEERING
ROAD NO: F3C010	DESIGNED BY: C.PROVO
MILE POST: 6.50	DRAWN BY: C.PROVO
PROJECT NO.: ER-32L(119)	REVIEWED BY: J.WOLF
CONTRACT NO.: 217225	APPROVED BY: J.WOLF
PLOT DATE: 10/27/2020	

COUNTY OF HUMBOLDT DEPARTMENT OF PUBLIC WORKS
<b>STORM DAMAGE REPAIR MATTOLE ROAD PM 6.50</b>
<b>ROADWAY PLAN - STA "R" 4+00 TO STA "R" 6+95</b>

SHEET  
**6**  
OF  
**14**

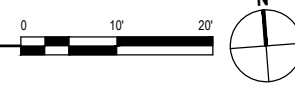


**LEGEND**

	EDGE OF HMA PAVEMENT
	HMA DIKE AND BERM
	RSP ENERGY DISSIPATER
	STORM DRAIN PIPE
	REMOVE TREE/STUMP

NOTE: LIMITS OF GRADING FOR STORM DRAIN PIPE INSTALLATION NOT SHOWN

**MATTOLE ROAD PM 6.50 PLAN VIEW - STA "R" 4+00 TO STA "R" 6+95**





GHD Inc.  
718 Third Street  
Eureka California 95501 USA  
T 1 707 443 8326 F 1 707 444 8330 W www.ghd.com



BAR IS ONE INCH ON ORIGINAL DRAWING  
IF NOT ONE INCH ON THIS SHEET, ADJUST SCALES ACCORDINGLY

ROAD NAME: MATTOLE ROAD	DESIGN SECTION: ENGINEERING
ROAD NO: F3C010	DESIGNED BY: C.PROVO
MILE POST: 6.50	DRAWN BY: C.PROVO
PROJECT NO.: ER-32L0(119)	REVIEWED BY: J.WOLF
CONTRACT NO.: 217225	APPROVED BY: J.WOLF
PLOT DATE: 10/27/2020	

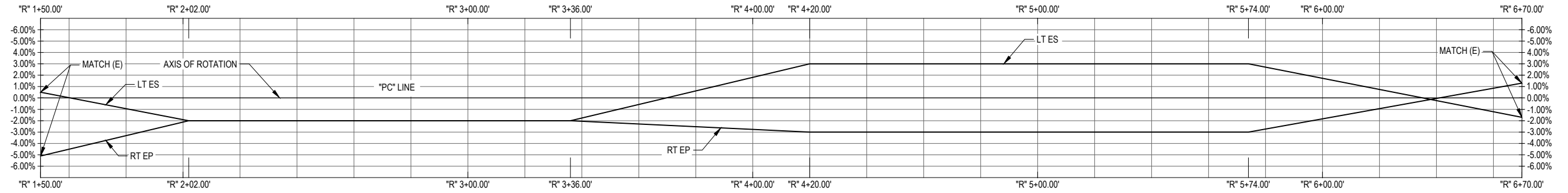
COUNTY OF HUMBOLDT DEPARTMENT OF PUBLIC WORKS
STORM DAMAGE REPAIR MATTOLE ROAD PM 6.50
ROADWAY PROFILE AND SUPERELEVATION

SHEET 7 OF 14

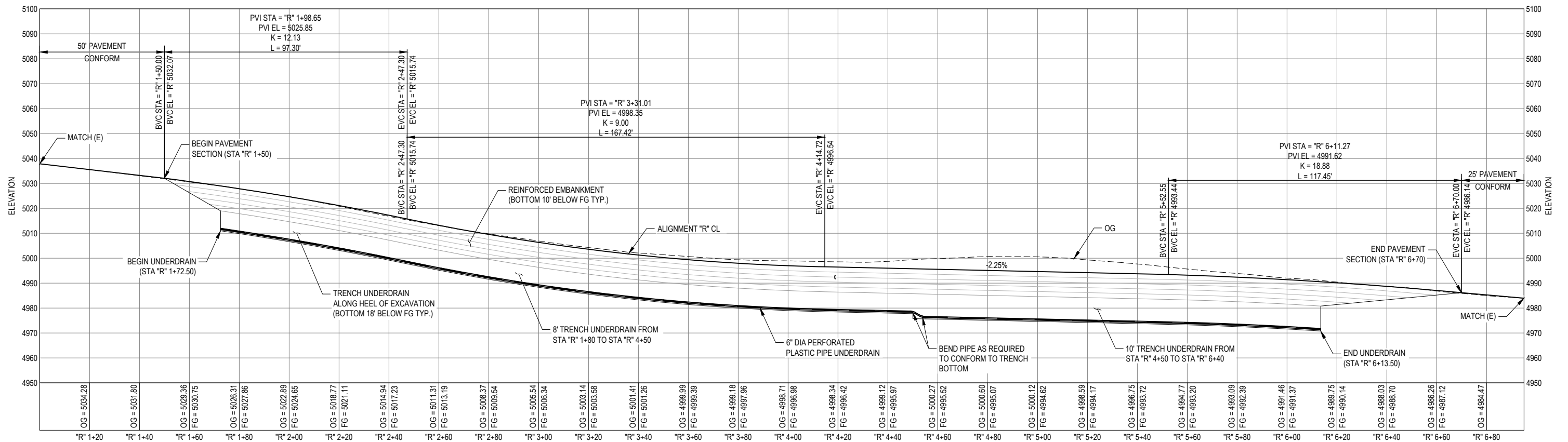
ROADWAY GEOMETRY					
STATION	LEFT TRAVEL LANE CROSS SLOPE	LEFT ES ELEVATION	CROWN ELEVATION	RIGHT EP ELEVATION	RIGHT TRAVEL LANE CROSS SLOPE
"R" 1+50	0.50%	5032.14	5032.07	5031.51	-5.10%
"R" 2+02	-2.00%	5024.05	5024.31	5024.09	-2.00%
"R" 3+36	-2.00%	5001.43	5001.69	5001.47	-2.00%
"R" 4+20	3.00%	4996.81	4996.42	4996.09	-3.00%
"R" 5+74	3.00%	4993.19	4992.80	4992.47	-3.00%
"R" 6+70	-1.70%	4985.92	4986.14	4986.28	1.30%

Note: Negative cross slopes indicate downwards sloping away from centerline

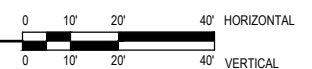
### ROADWAY ELEVATIONS



### MATTOLE ROAD PM 6.50 SUPERELEVATION



### MATTOLE ROAD PM 6.50 PROFILE VIEW





GHD Inc.  
718 Third Street  
Eureka California 95501 USA  
T 1 707 443 8326 F 1 707 444 8330 W www.ghd.com



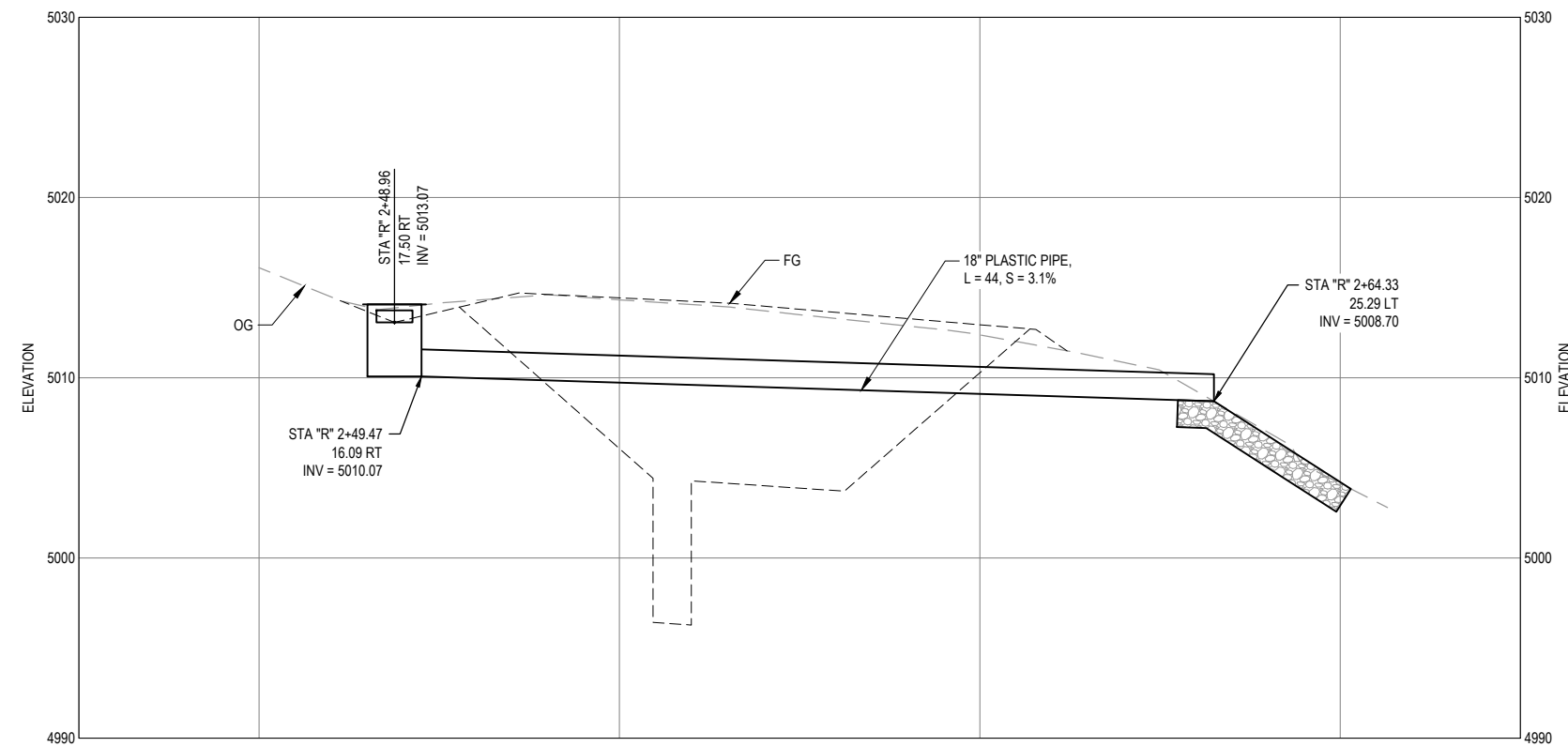
BAR IS ONE INCH ON ORIGINAL DRAWING  
IF NOT ONE INCH ON THIS SHEET, ADJUST SCALES ACCORDINGLY

ROAD NAME:	MATTOLE ROAD
ROAD NO:	F3C010
MILE POST:	6.50
PROJECT NO.:	ER-32L0(119)
CONTRACT NO.:	217225
PLOT DATE:	10/27/2020

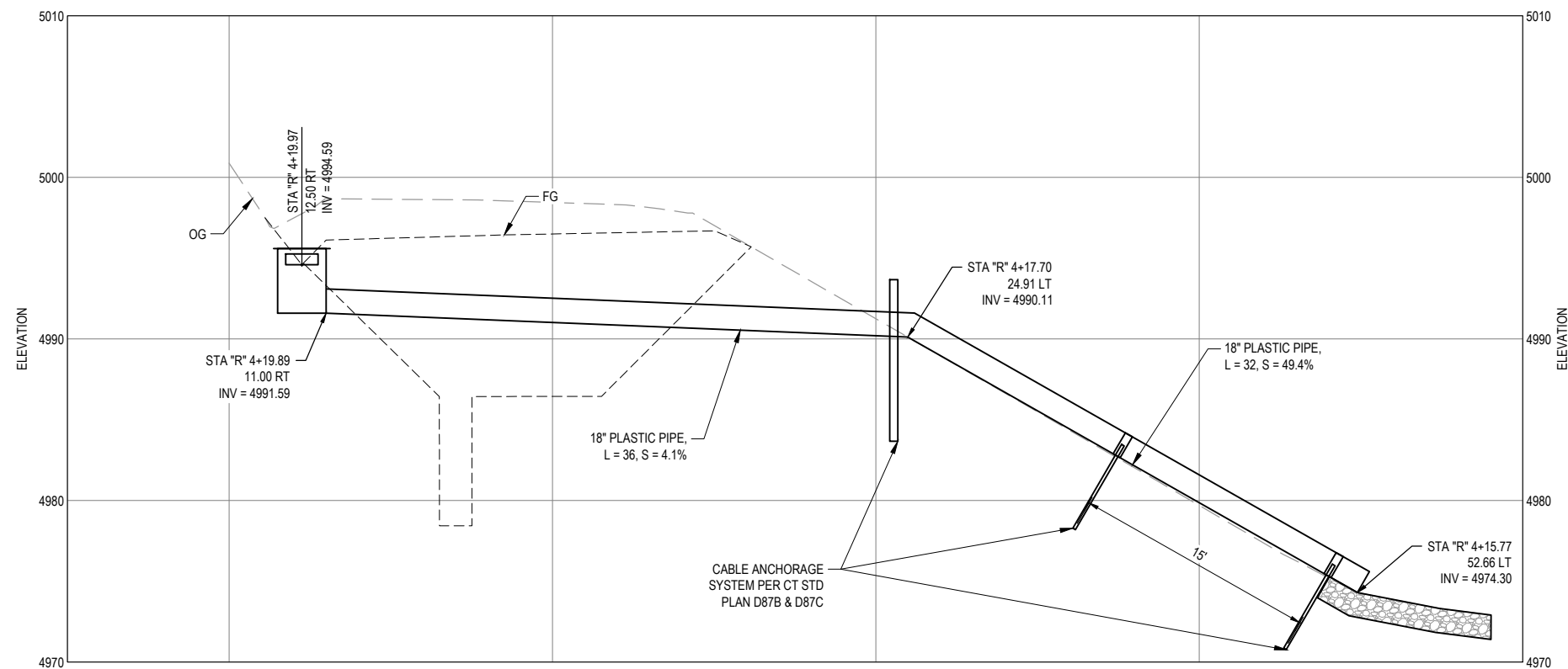
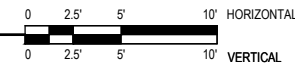
DESIGN SECTION	ENGINEERING
DESIGNED BY:	C.PROVO
DRAWN BY:	C.PROVO
REVIEWED BY:	J.WOLF
APPROVED BY:	J.WOLF

COUNTY OF HUMBOLDT DEPARTMENT OF PUBLIC WORKS
STORM DAMAGE REPAIR MATTOLE ROAD PM 6.50
DRAINAGE PROFILES

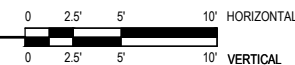
SHEET 8 OF 14



STORM DRAIN SYSTEM 1 PROFILE



STORM DRAIN SYSTEM 2 PROFILE



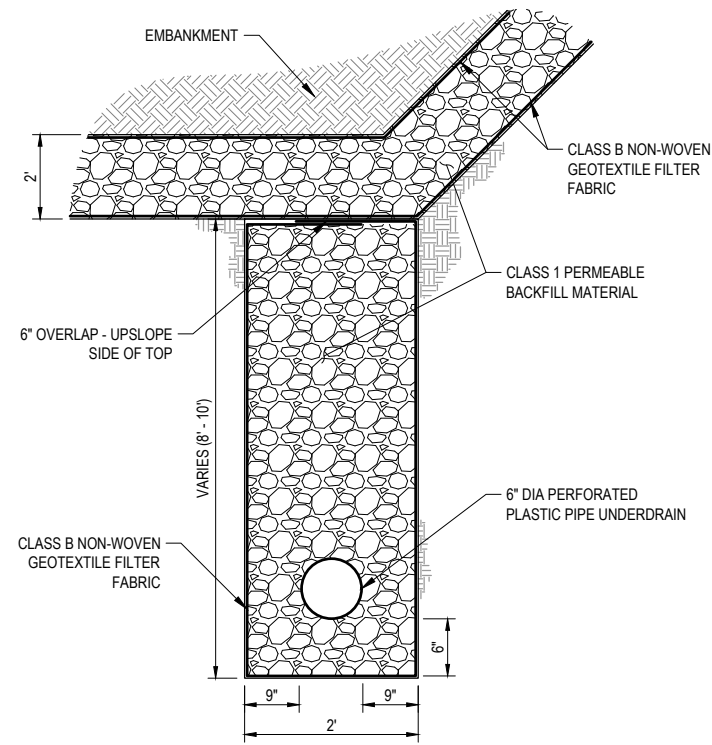




GHD Inc.  
718 Third Street  
Eureka California 95501 USA  
T 1 707 443 8326 F 1 707 444 8330 W www.ghd.com

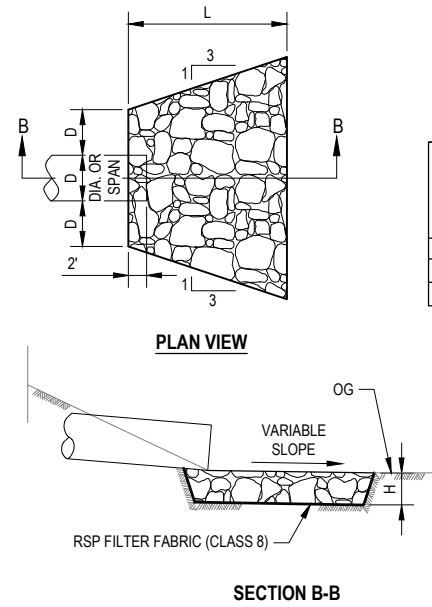


BAR IS ONE INCH ON ORIGINAL DRAWING  IF NOT ONE INCH ON THIS SHEET, ADJUST SCALES ACCORDINGLY	ROAD NAME: MATTOLE ROAD	DESIGN SECTION ENGINEERING	COUNTY OF HUMBOLDT DEPARTMENT OF PUBLIC WORKS <b>STORM DAMAGE REPAIR MATTOLE ROAD PM 6.50</b>	SHEET <b>9</b> OF <b>14</b>
	ROAD NO: F3C010	DESIGNED BY: C.PROVO		
	MILE POST: 6.50	DRAWN BY: C.PROVO	<b>CONSTRUCTION DETAILS</b>	
	PROJECT NO.: ER-32LO(119)	REVIEWED BY: J.WOLF		
	CONTRACT NO.: 217225	APPROVED BY: J.WOLF		
	PLOT DATE: 10/27/2020			



**TYPICAL TRENCH UNDERDRAIN & BLANKET DRAIN**

NOT TO SCALE



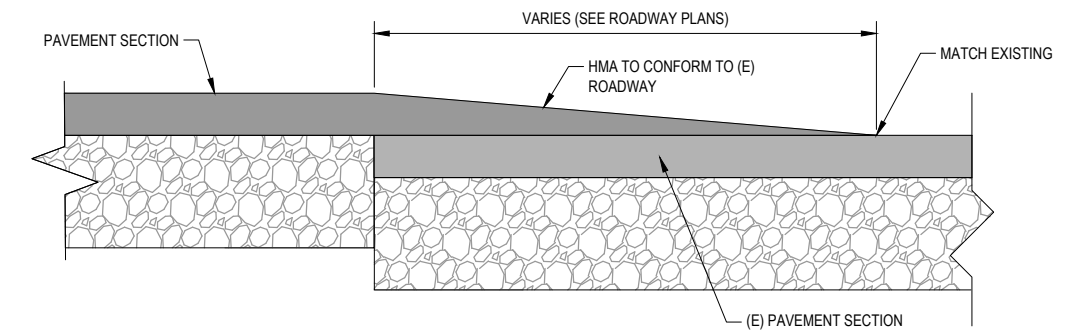
CULVERT SIZE D (inches)	RSP CLASS	LENGTH OF APRON L (feet)	DEPTH OF APRON H (feet)
6	2	6	1.5
FLUME DOWNDRAIN	2	6	1.5
18	2	10	1.5

**NOTE:**

- EXCAVATION FOR PLACEMENT OF RSP WILL NOT BE MEASURED FOR PAYMENT.

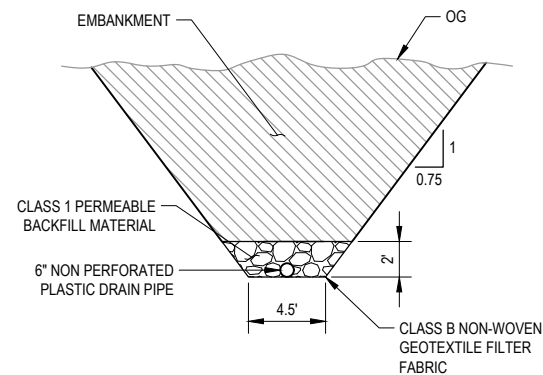
**RSP ENERGY DISSIPATOR**

NOT TO SCALE



**PAVEMENT CONFORM DETAIL**

NOT TO SCALE



**SUBDRAIN OUTLET DETAIL**

NOT TO SCALE

NOTE: THIS PLAN IS ACCURATE FOR EROSION CONTROL ONLY



GHD Inc.  
718 Third Street  
Eureka California 95501 USA  
T 1 707 443 8326 F 1 707 444 8330 W www.ghd.com

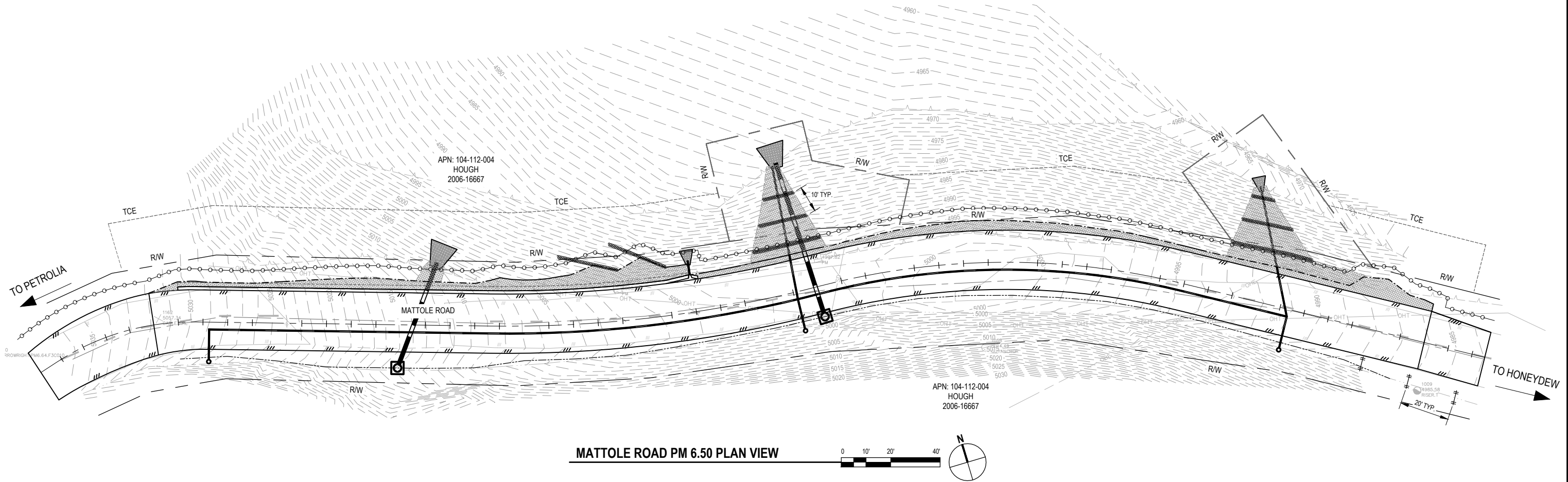


BAR IS ONE INCH ON ORIGINAL DRAWING  
IF NOT ONE INCH ON THIS SHEET, ADJUST SCALES ACCORDINGLY

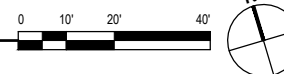
ROAD NAME: MATTOLE ROAD	DESIGN SECTION ENGINEERING
ROAD NO: F3C010	DESIGNED BY: C.PROVO
MILE POST: 6.50	DRAWN BY: C.PROVO
PROJECT NO.: ER-32LO(119)	REVIEWED BY: J.WOLF
CONTRACT NO.: 217225	APPROVED BY: J.WOLF
PLOT DATE: 10/27/2020	

COUNTY OF HUMBOLDT DEPARTMENT OF PUBLIC WORKS
STORM DAMAGE REPAIR MATTOLE ROAD PM 6.50
EROSION CONTROL PLAN

SHEET 10 OF 14



MATTOLE ROAD PM 6.50 PLAN VIEW



LEGEND

- HAND SOWN SEED AND ROLLED EROSION CONTROL PRODUCT
- TEMPORARY CHECK DAMS
- TEMPORARY SILT FENCE
- FIBER ROLLS
- TEMPORARY DRAINAGE INLET PROTECTION



GHD Inc.  
718 Third Street  
Eureka California 95501 USA  
T 1 707 443 8326 F 1 707 444 8330 W www.ghd.com



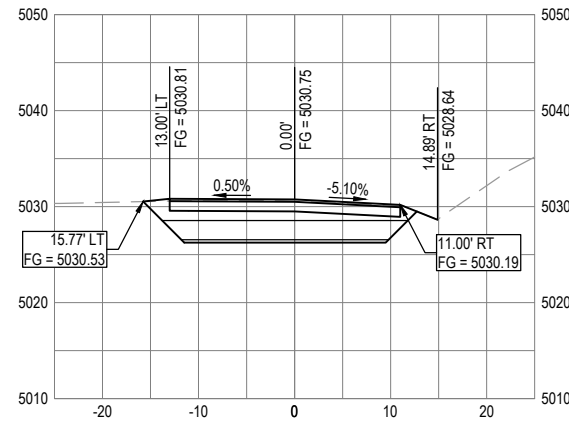
BAR IS ONE INCH ON ORIGINAL DRAWING  
IF NOT ONE INCH ON THIS SHEET, ADJUST SCALES ACCORDINGLY

ROAD NAME:	MATTOLE ROAD
ROAD NO:	F3C010
MILE POST:	6.50
PROJECT NO.:	ER-32LO(119)
CONTRACT NO.:	217225
PLOT DATE:	10/27/2020

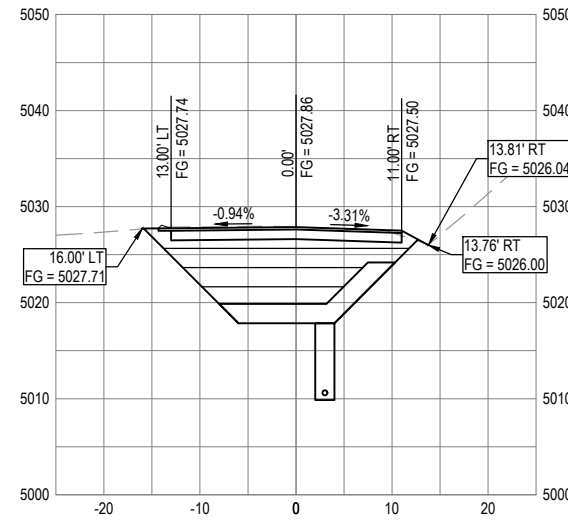
DESIGN SECTION	ENGINEERING
DESIGNED BY:	C.PROVO
DRAWN BY:	C.PROVO
REVIEWED BY:	J.WOLF
APPROVED BY:	J.WOLF

COUNTY OF HUMBOLDT DEPARTMENT OF PUBLIC WORKS	
STORM DAMAGE REPAIR MATTOLE ROAD PM 6.50	
CROSS SECTIONS - 1 OF 4	

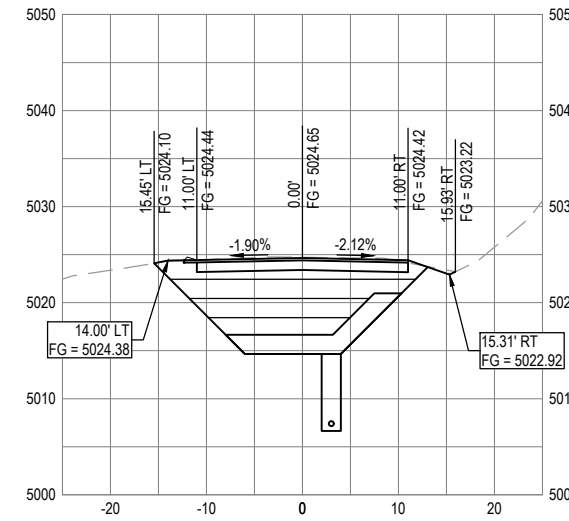
SHEET  
11  
OF  
14



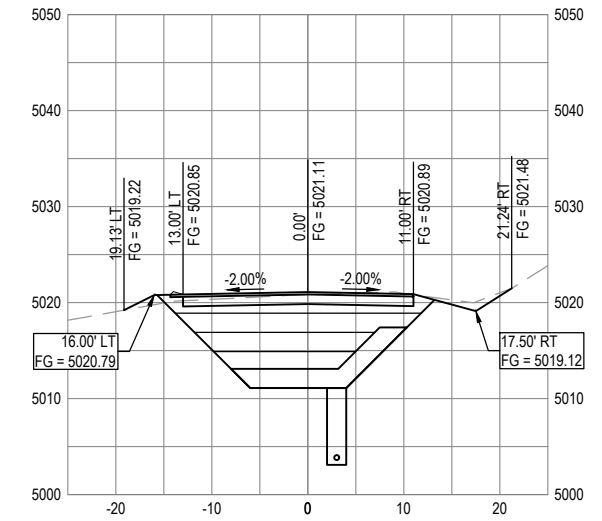
SECTION - STA "R" 1+60



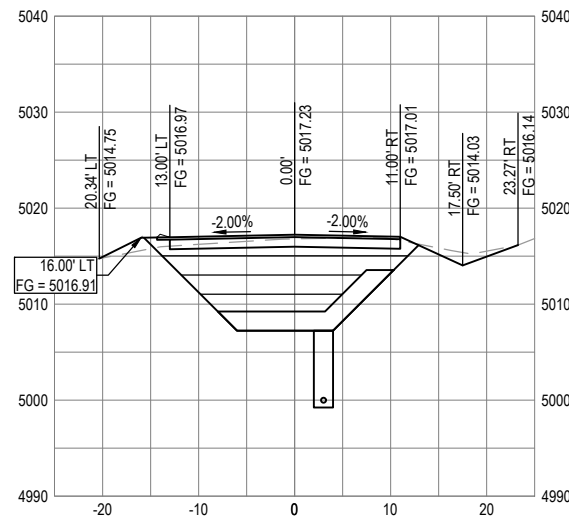
SECTION - STA "R" 1+80



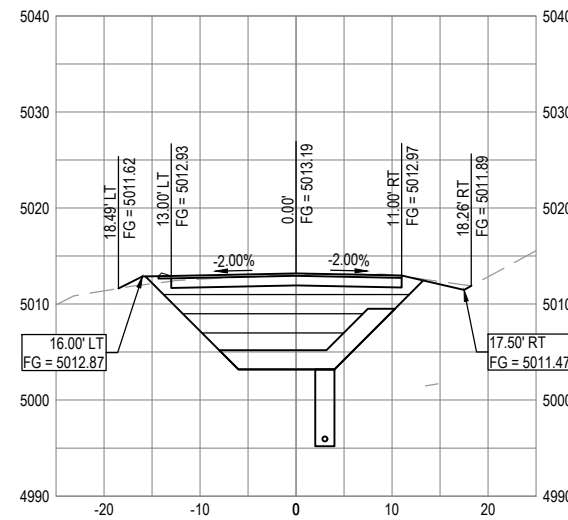
SECTION - STA "R" 2+00



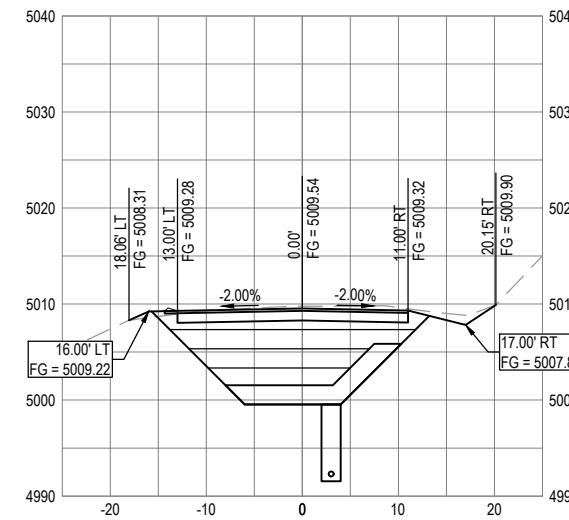
SECTION - STA "R" 2+20



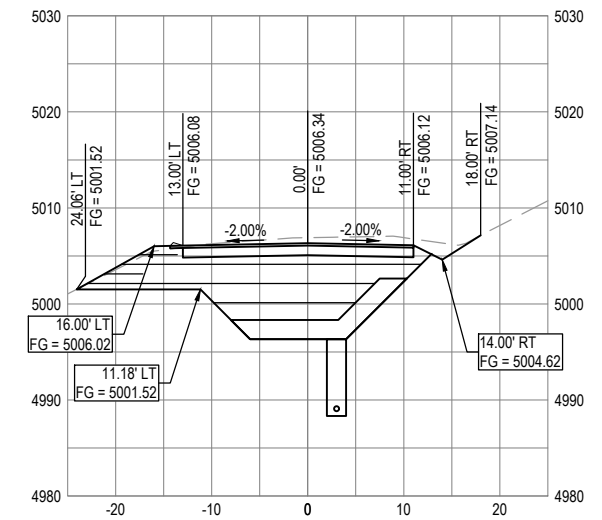
SECTION - STA "R" 2+40



SECTION - STA "R" 2+60



SECTION - STA "R" 2+80



SECTION - STA "R" 3+00



GHD Inc.  
718 Third Street  
Eureka California 95501 USA  
T 1 707 443 8326 F 1 707 444 8330 W www.ghd.com

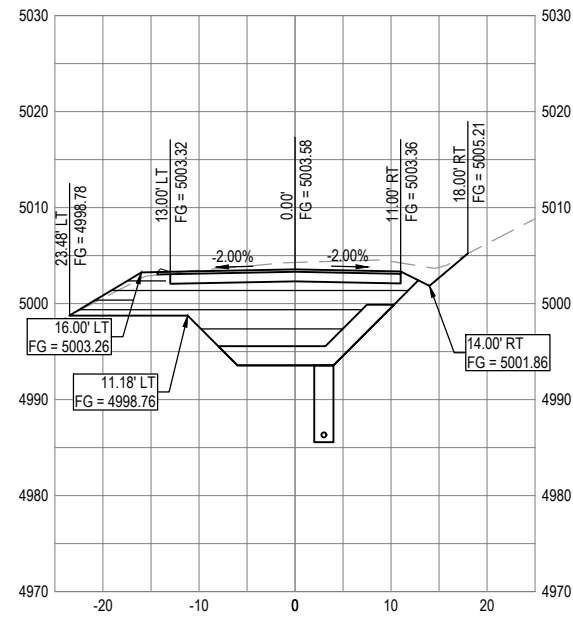


BAR IS ONE INCH ON ORIGINAL DRAWING  
IF NOT ONE INCH ON THIS SHEET, ADJUST SCALES ACCORDINGLY

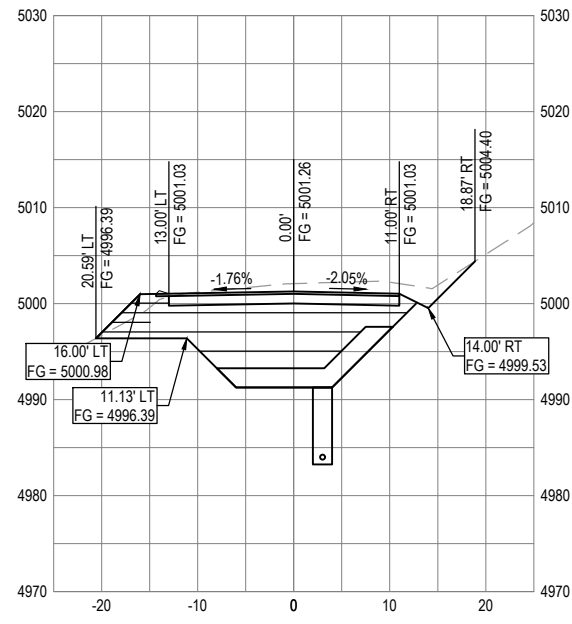
ROAD NAME: MATTOLE ROAD	DESIGN SECTION ENGINEERING
ROAD NO: F3C010	DESIGNED BY: C.PROVO
MILE POST: 6.50	DRAWN BY: C.PROVO
PROJECT NO.: ER-32L0(119)	REVIEWED BY: J.WOLF
CONTRACT NO.: 217225	APPROVED BY: J.WOLF
PLOT DATE: 10/27/2020	

COUNTY OF HUMBOLDT DEPARTMENT OF PUBLIC WORKS
STORM DAMAGE REPAIR MATTOLE ROAD PM 6.50
CROSS SECTIONS - 2 OF 4

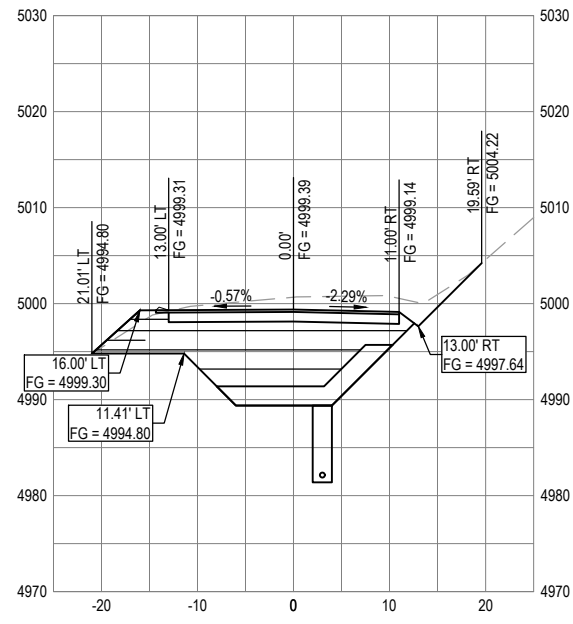
SHEET 12 OF 14



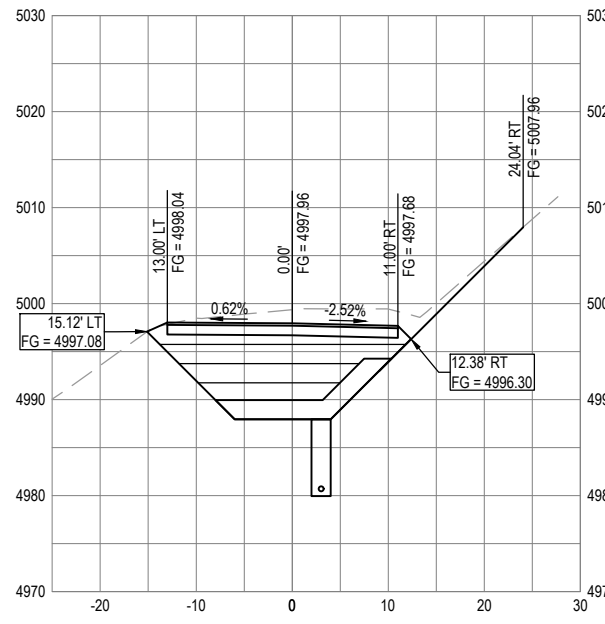
SECTION - STA "R" 3+20



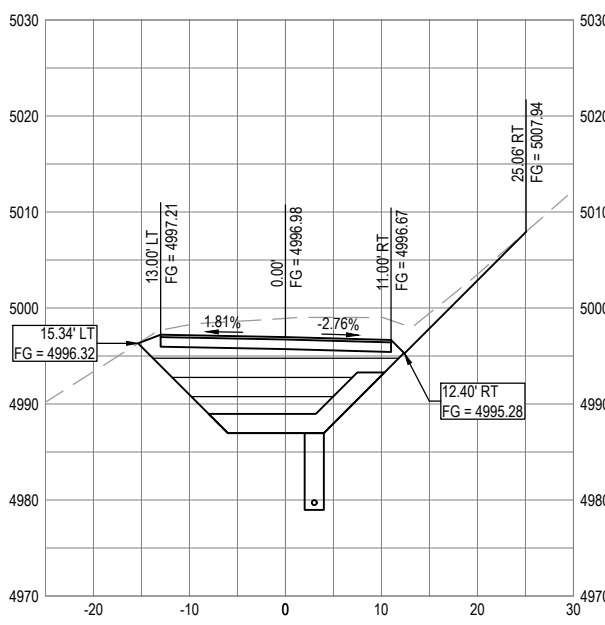
SECTION - STA "R" 3+40



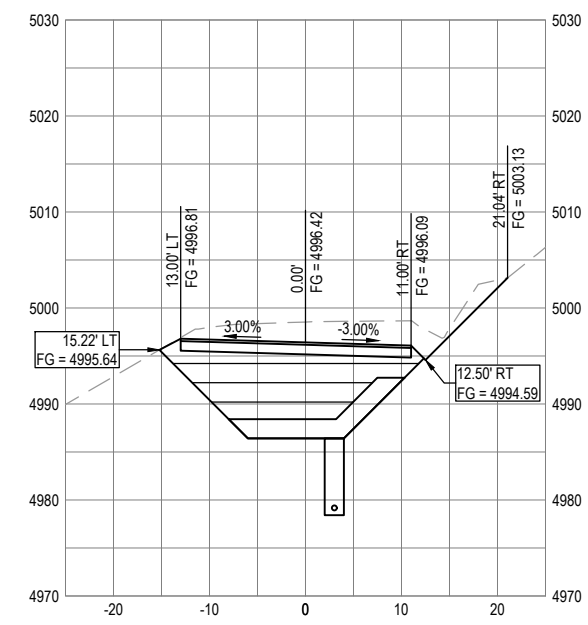
SECTION - STA "R" 3+60



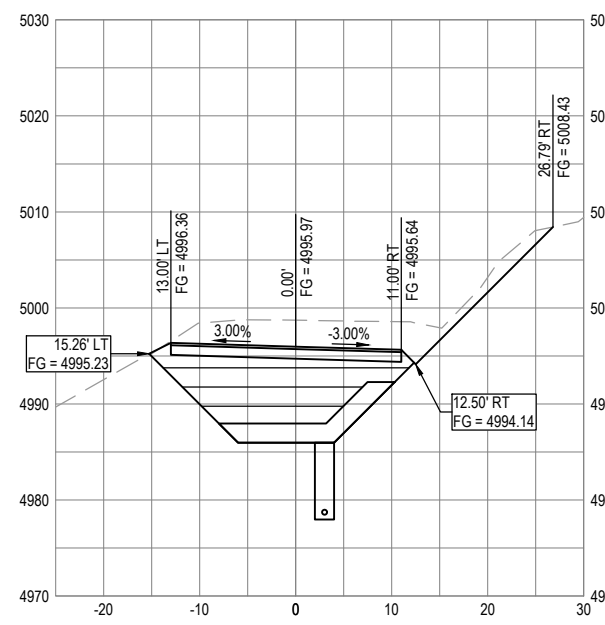
SECTION - STA "R" 3+80



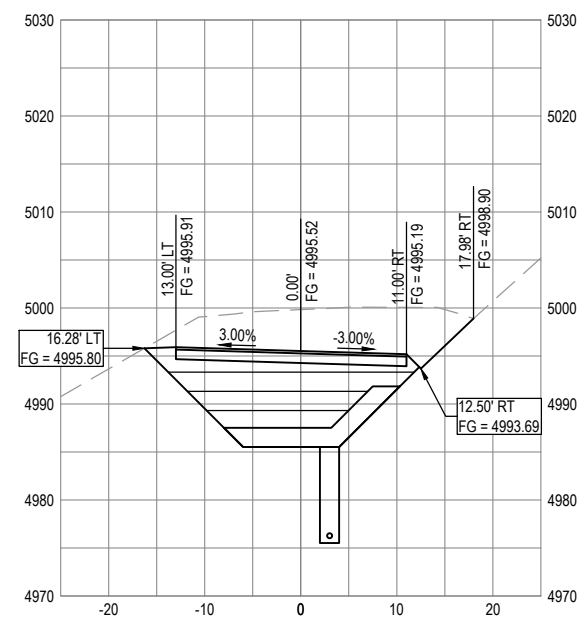
SECTION - STA "R" 4+00



SECTION - STA "R" 4+20



SECTION - STA "R" 4+40



SECTION - STA "R" 4+60



GHD Inc.  
718 Third Street  
Eureka California 95501 USA  
T 1 707 443 8326 F 1 707 444 8330 W www.ghd.com



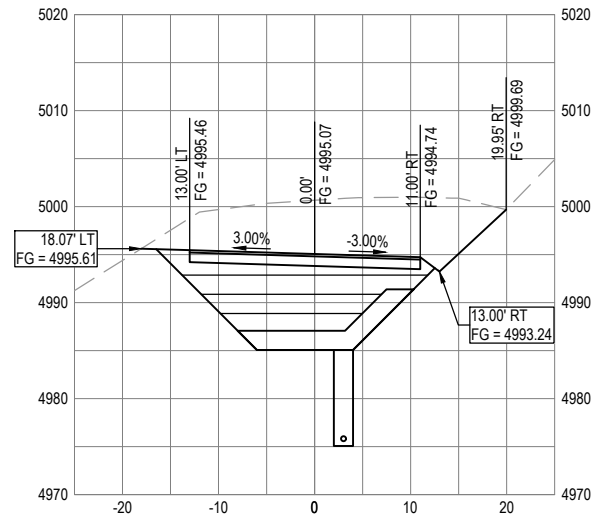
BAR IS ONE INCH ON ORIGINAL DRAWING  
IF NOT ONE INCH ON THIS SHEET, ADJUST SCALES ACCORDINGLY

ROAD NAME: MATTOLE ROAD  
ROAD NO: F3C010  
MILE POST: 6.50  
PROJECT NO.: ER-32L0(119)  
CONTRACT NO.: 217225  
PLOT DATE: 10/27/2020

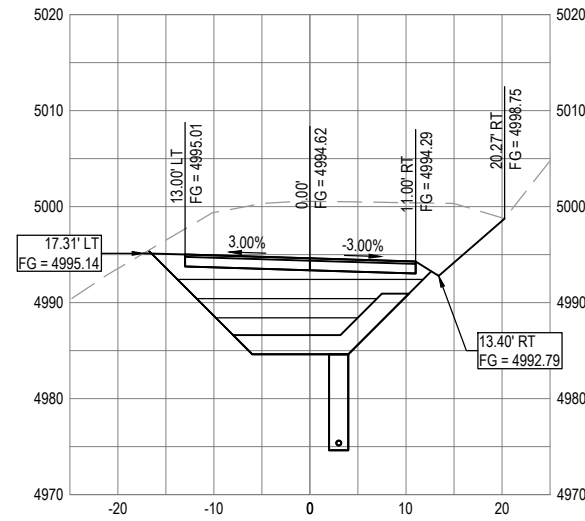
DESIGN SECTION ENGINEERING  
DESIGNED BY: C.PROVO  
DRAWN BY: C.PROVO  
REVIEWED BY: J.WOLF  
APPROVED BY: J.WOLF

COUNTY OF HUMBOLDT  
DEPARTMENT OF PUBLIC WORKS  
STORM DAMAGE REPAIR MATTOLE ROAD PM 6.50  
CROSS SECTIONS - 3 OF 4

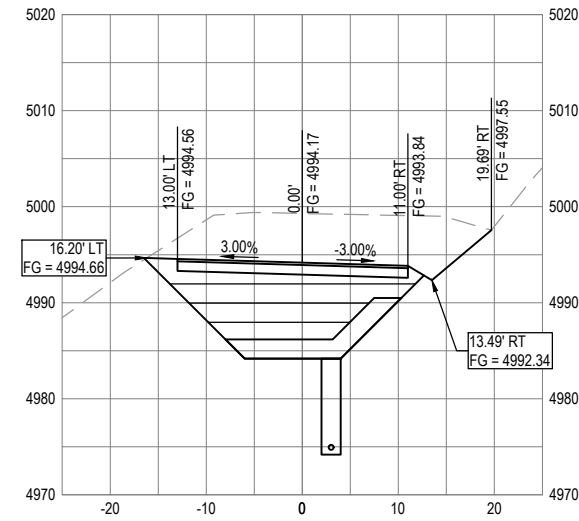
SHEET 13 OF 14



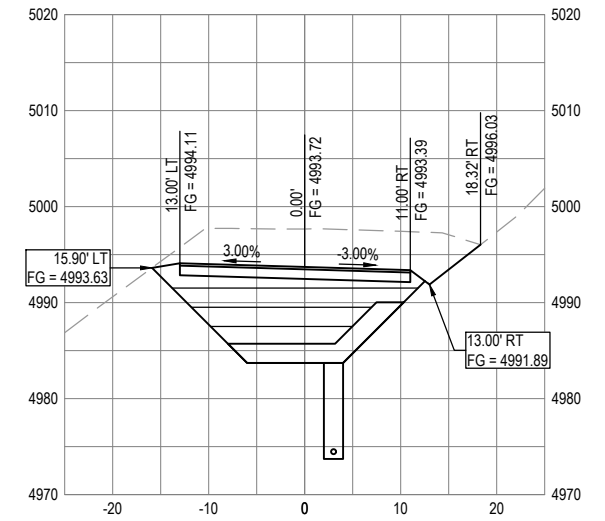
SECTION - STA "R" 4+80



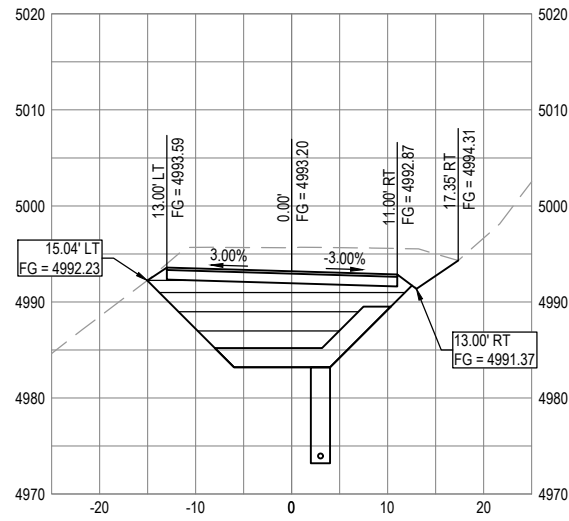
SECTION - STA "R" 5+00



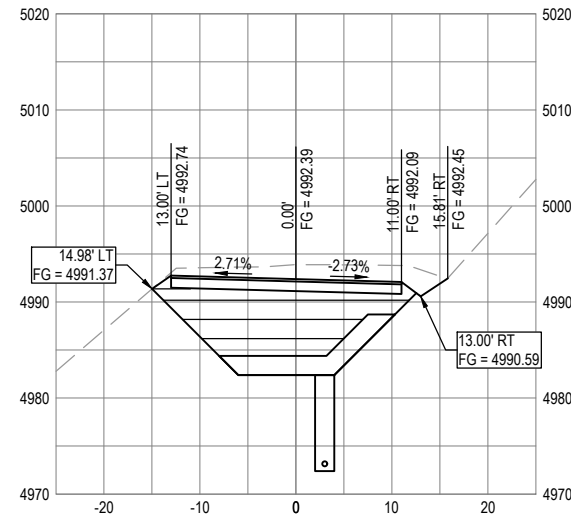
SECTION - STA "R" 5+20



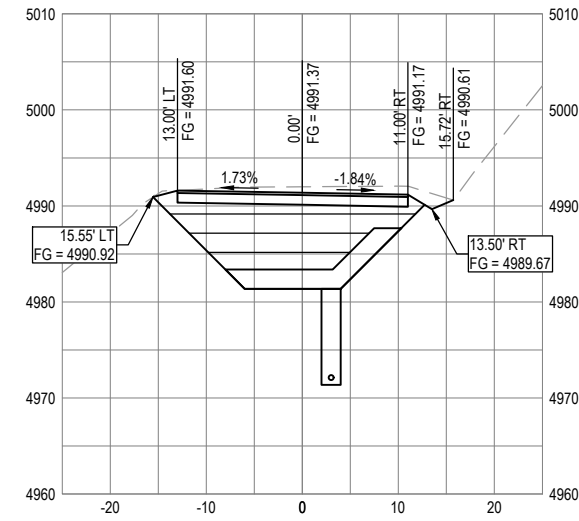
SECTION - STA "R" 5+40



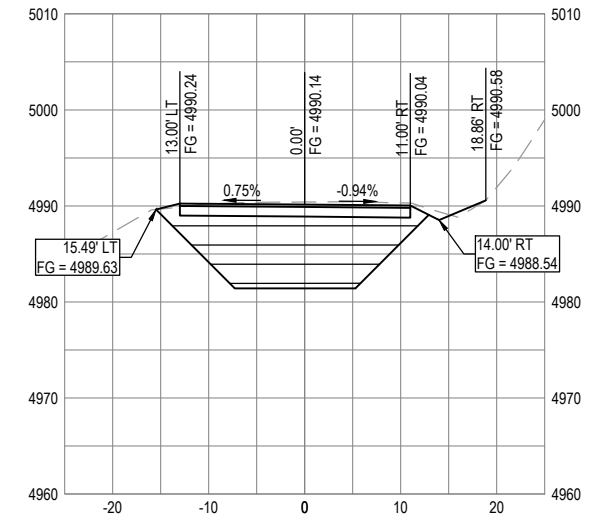
SECTION - STA "R" 5+60



SECTION - STA "R" 5+80



SECTION - STA "R" 6+00



SECTION - STA "R" 6+20



GHD Inc.  
718 Third Street  
Eureka California 95501 USA  
T 1 707 443 8326 F 1 707 444 8330 W www.ghd.com



BAR IS ONE INCH ON ORIGINAL DRAWING

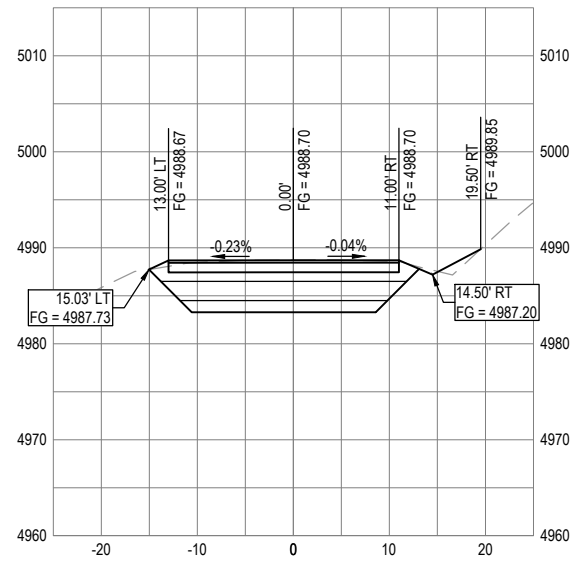
IF NOT ONE INCH ON THIS SHEET, ADJUST SCALES ACCORDINGLY

ROAD NAME:	MATTOLE ROAD
ROAD NO:	F3C010
MILE POST:	6.50
PROJECT NO.:	ER-32L0(119)
CONTRACT NO.:	217225
PLOT DATE:	10/27/2020

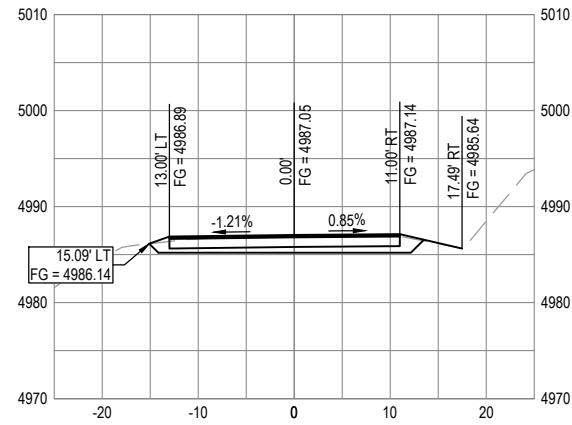
DESIGN SECTION	ENGINEERING
DESIGNED BY:	C.PROVO
DRAWN BY:	C.PROVO
REVIEWED BY:	J.WOLF
APPROVED BY:	J.WOLF

COUNTY OF HUMBOLDT DEPARTMENT OF PUBLIC WORKS
STORM DAMAGE REPAIR MATTOLE ROAD PM 6.50
CROSS SECTIONS - 4 OF 4

SHEET  
14  
OF  
14



SECTION - STA "R" 6+40



SECTION - STA "R" 6+60