

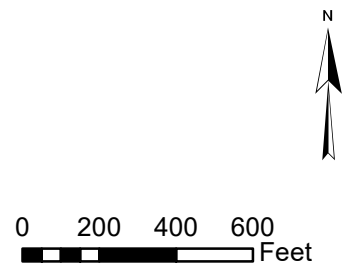
LOCATION MAP

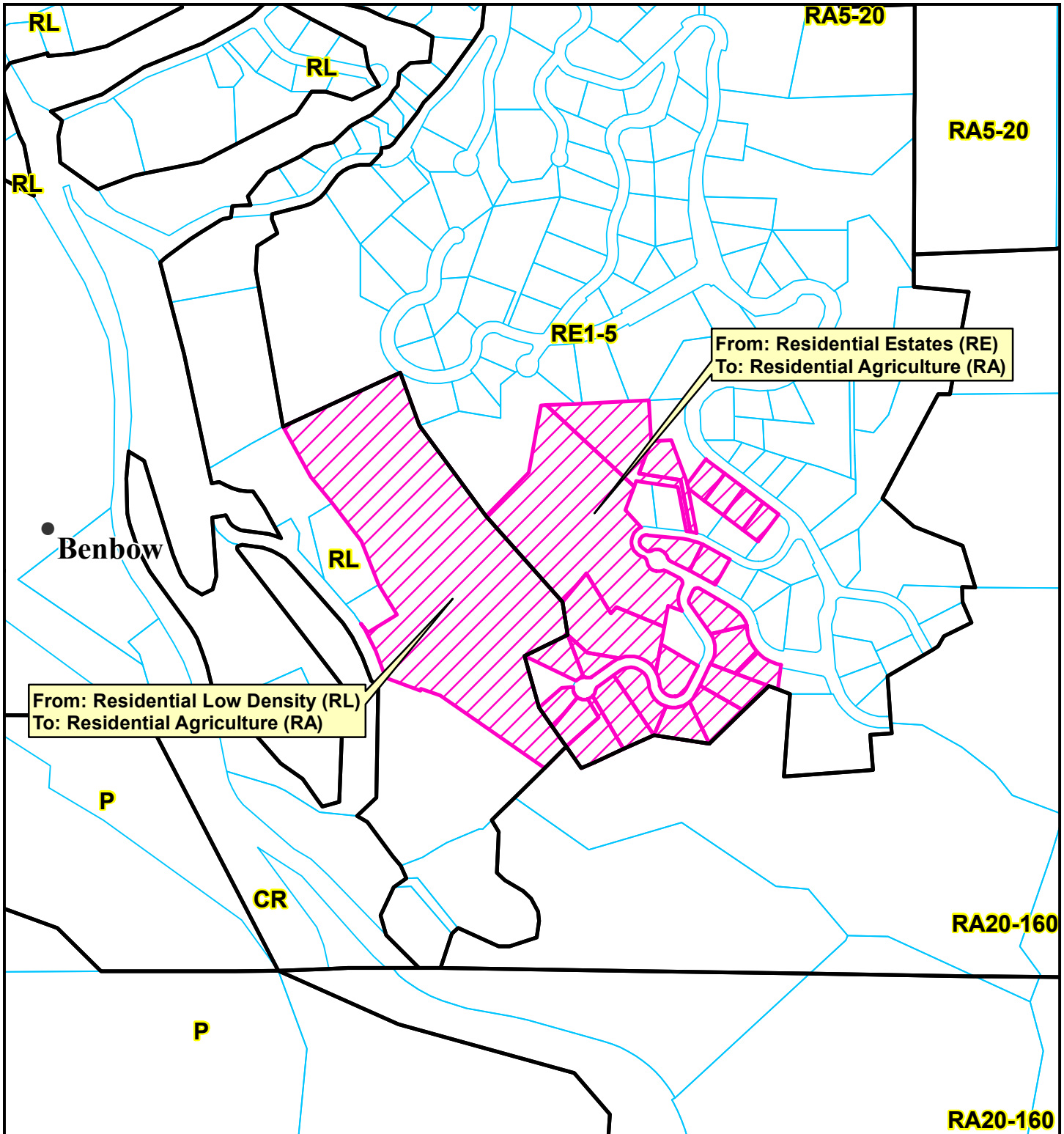
**PROPOSED BENBOW PROPERTIES INC
GENERAL PLAN AMENDMENT &
ZONING RECLASSIFICATION
BENBOW AREA
PLN-2021-17209**

**APN: 033-101-011 et al
T04S R04E S31 HB&M (Garberville)**

Project Area = 

This map is intended for display purposes and should not be used for precise measurement or navigation. Data has not been completely checked for accuracy.





LAND USE MAP DETAIL

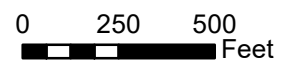
**PROPOSED ROCK & SKY LLC
 GENERAL PLAN AMENDMENT &
 ZONE RECLASSIFICATION
 BENBOW AREA
 PLN-2021-17209**

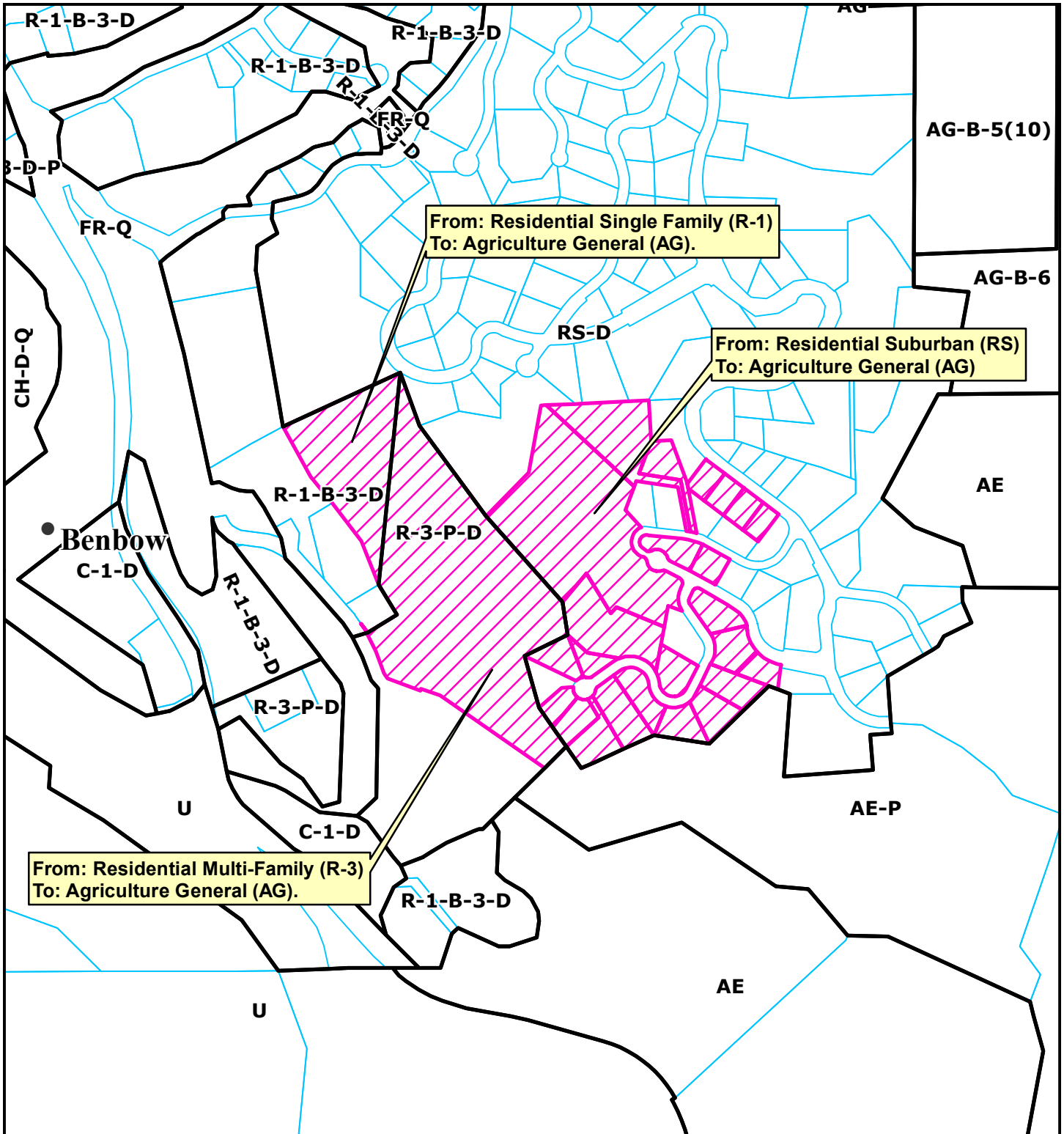
APN: 033-101-011

T04S R04E S31 HB&M (Garberville)

Project Area = 

This map is intended for display purposes and should not be used for precise measurement or navigation. Data has not been completely checked for accuracy.





ZONING MAP DETAIL

**PROPOSED ROCK & SKY LLC
 GENERAL PLAN AMENDMENT &
 ZONE RECLASSIFICATION
 BENBOW AREA
 PLN-2021-17209
 APN: 033-101-011
 T04S R04E S31 HB&M (Garberville)**

Project Area = 

This map is intended for display purposes and should not be used for precise measurement or navigation. Data has not been completely checked for accuracy.

