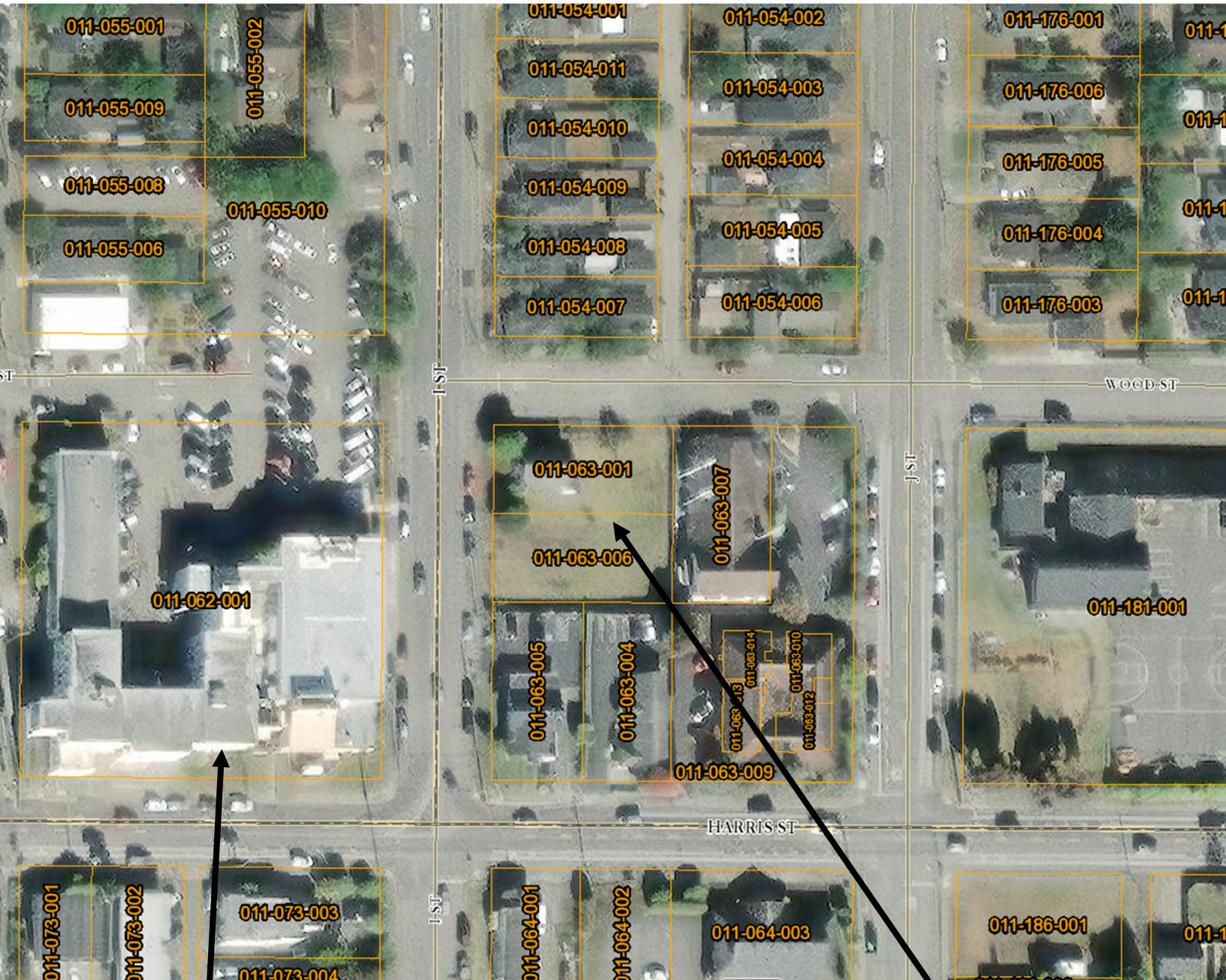


3007 & 3015 I Street/APN: 011-063-001 & 011-063-006 Maps and Photographs



Clark Complex
County Owned

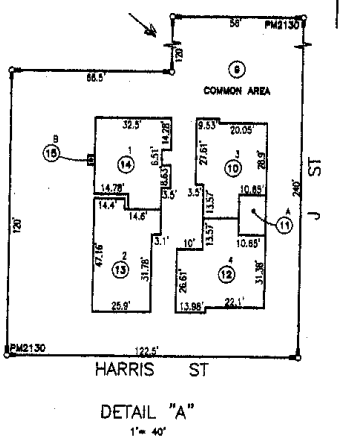
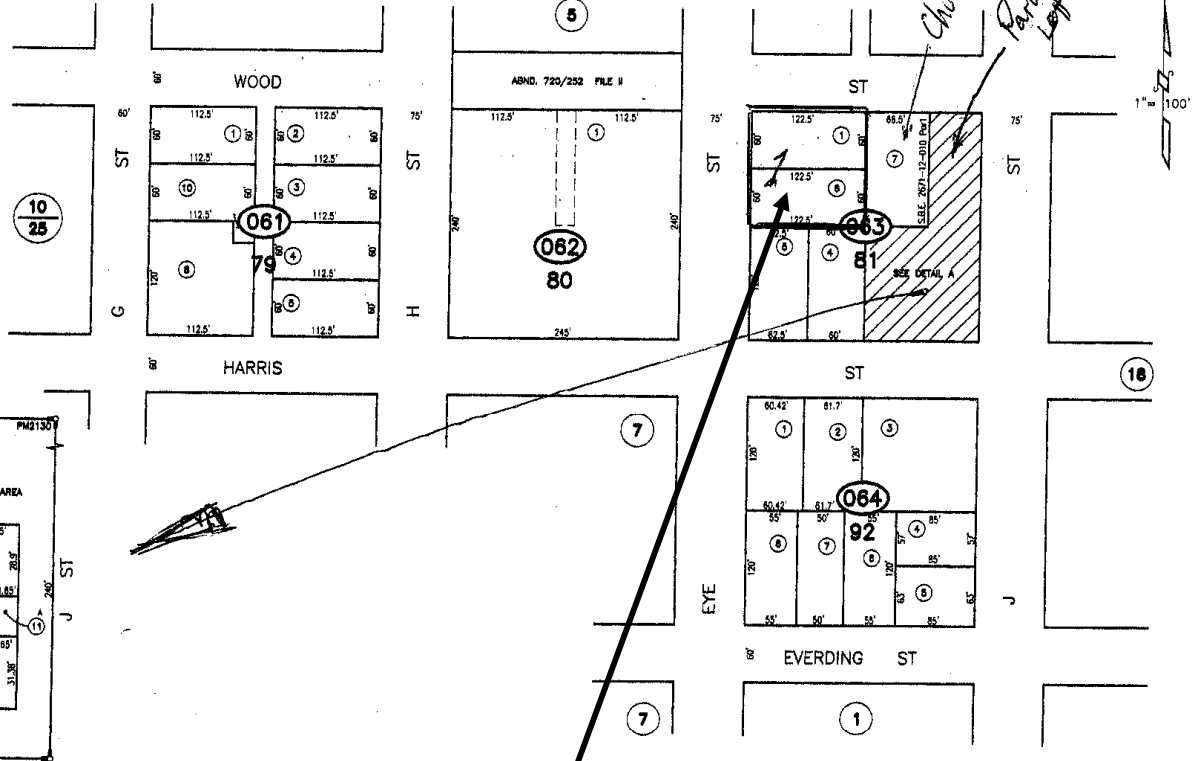
3007 & 3015 I St

Aerial View

ASSESSOR'S PARCEL MAP
 1. THIS MAP WAS PREPARED FOR ASSESSMENT PURPOSES ONLY.
 2. NO LIABILITY IS ASSUMED FOR THE ACCURACY OF THE DATA SHOWN.
 3. ASSESSOR'S PARCELS MAY NOT COMPLY WITH LOCAL LOT-SPLIT OR BUILDING SITE ORDINANCES.

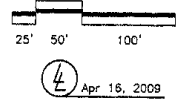
CITY OF EUREKA

11-06



RM, Bk 5 of MAPS, Pg 62
 "Prairie Add'n, Amended"
 PM2130 of PM Bk 18, Pgs 134-135

NOTE - Assessor's Block Numbers Shown in Ellipses
 Assessor's Parcel Numbers Shown in Circles.
 Assessor's Map Bk. 11, Pg.06
 County of Humboldt, CA.



Assessor Parcel Map
APNs: 011-063-001 & 011-063-006