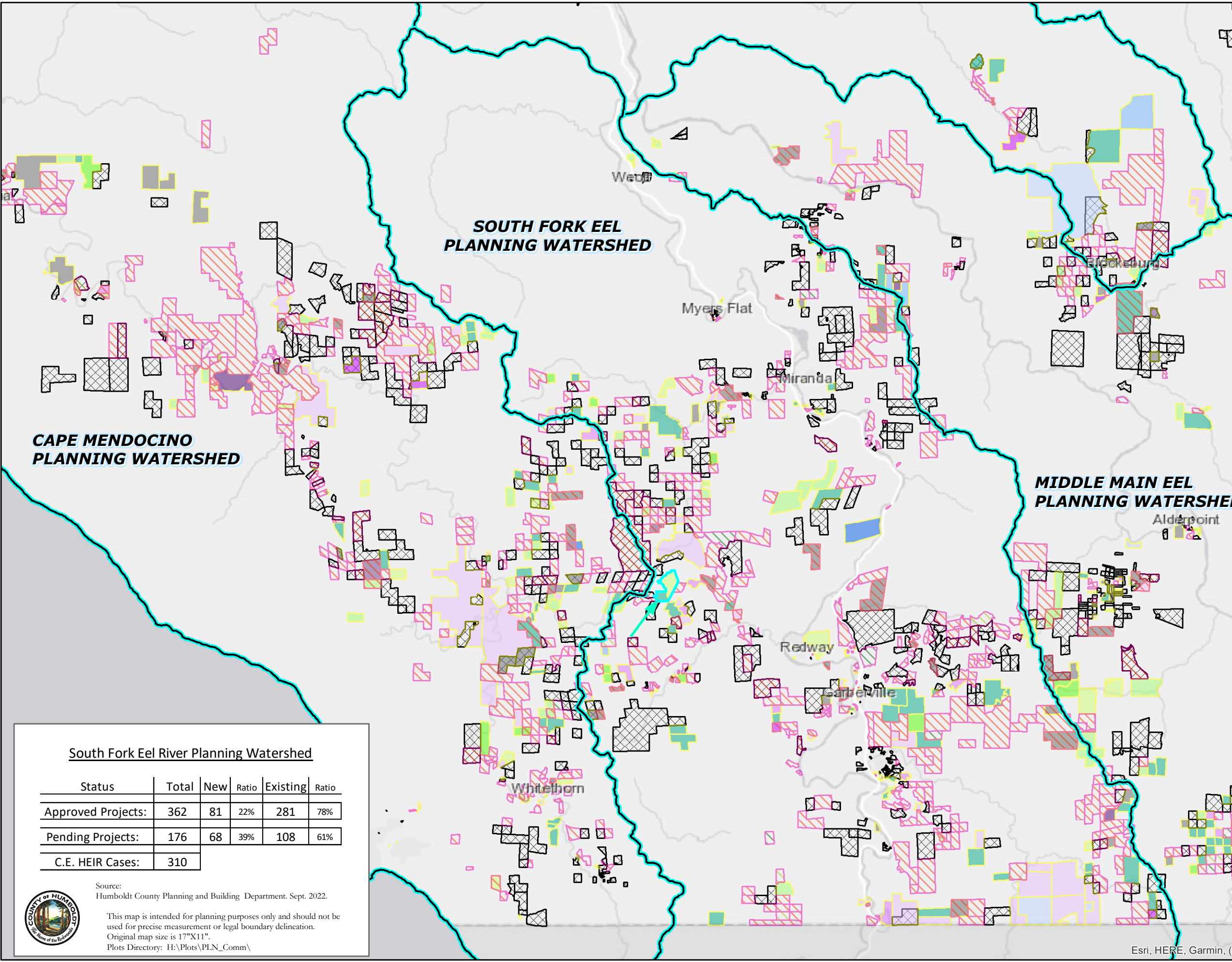


Planning Commissioner Map

- Planning Watersheds**
- Planning Watershed
 - Detailed Planning Watershed
 - Critical Watershed
 - CE HEIR Notices
- Approved Projects**
- Case Complete
 - Approved
 - Post Approval Monitoring
- Pending Projects**
- Other
 - Additional Info Requested
 - Incomplete
 - Incomplete/Needs Letter
 - Incomplete Submittal
 - Holding for Lack of Response
 - With Consultant - Phase 1
 - Suspense
 - Submitted
 - Open
 - Project Evaluation
 - Revisions Submitted
 - Revisions Required
 - Needs Further Review
 - With Consultant - Phase 2
 - Review Not Required
 - In Referrals
 - Hearings
 - Staff Report
 - Staff Report Processing
 - Staff Report- Consultant Ret
 - Staff Report- With Consultan



CAPE MENDOCINO PLANNING WATERSHED

SOUTH FORK EEL PLANNING WATERSHED

MIDDLE MAIN EEL PLANNING WATERSHED

South Fork Eel River Planning Watershed

Status	Total	New	Ratio	Existing	Ratio
Approved Projects:	362	81	22%	281	78%
Pending Projects:	176	68	39%	108	61%
C.E. HEIR Cases:	310				

Source: Humboldt County Planning and Building Department, Sept. 2022.

This map is intended for planning purposes only and should not be used for precise measurement or legal boundary delineation.
Original map size is 17"x11".
Plots Directory: H:\Plots\PLN_Comm\

Project Number:
PLN-11292-CUP
APN:
221-240-015-000

1 inch = 3.6 miles