



COUNTY OF HUMBOLDT

AGENDA ITEM NO.
0-2

For the meeting of: March 22, 2016

Date: March 1, 2016
To: Board of Supervisors
From: Supervisor Ryan Sundberg
Subject: St. Joseph Health System Update on Stemi Center and efforts toward achieving Trauma Center Designation

RECOMMENDATION(S): That the Board of Supervisors hear the presentation and take appropriate action, if required.

SOURCE OF FUNDING: N/A

DISCUSSION: Dr. David O'Brien, M.D., M.S. President, St. Joseph Health will update the Board on the new Stemi Receiving Center for the treatment of severe heart attacks at the Heart Institute at St. Joseph Hospital. He will also be discussing efforts towards achieving Trauma Center designation, and the importance of being able to provide immediate care for patients with severe traumatic injuries locally.

FINANCIAL IMPACT: N/A

OTHER AGENCY INVOLVEMENT: N/A

ALTERNATIVES TO STAFF RECOMMENDATIONS: Board discretion.

ATTACHMENTS: PowerPoint Presentation.

Prepared by Kathy Hayes

Signature *Ryan Sundberg*

REVIEW: Auditor _____ County Counsel _____ Personnel _____ Risk Manager _____ Other _____

TYPE OF ITEM:
 Consent
 Departmental
 Public Hearing
 Other Special Presentation (10 min)
PREVIOUS ACTION/REFERRAL:

BOARD OF SUPERVISORS, COUNTY OF HUMBOLDT
Upon motion of Supervisor _____ Seconded by Supervisor _____
Ayes _____
Nays _____
Abstain _____
Absent _____

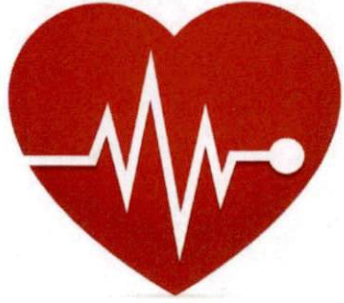
Per Order of the Chair

Board Order No. _____
Meeting of: _____

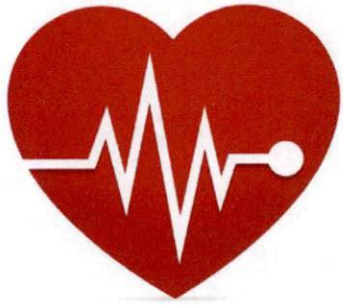
and carried by those members present, the Board hereby approves the recommended action contained in this Board report.
Dated: March 22, 2016
By: *Kathy Hayes*
Kathy Hayes, Clerk of the Board

St. Joseph Health Humboldt County Update

David O'Brien, M.D., M.S.
President, St. Joseph Health

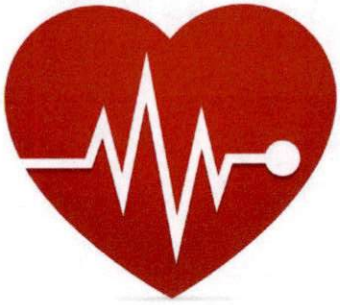


The Heart Institute at St. Joseph Hospital in Eureka has officially been designated a “STEMI Receiving Center” for the treatment of severe heart attacks by North Coast Emergency Medical Services.



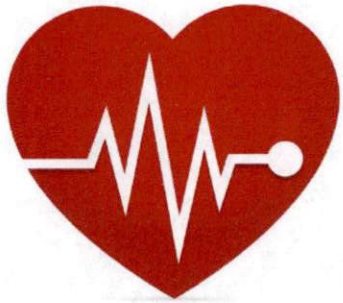
The designation means that St. Joseph exceeds national standards in the time it takes to treat patients for *ST Elevation Myocardial Infarctions (STEMI)*, which are severe heart attacks caused by a blocked artery.

St. Joseph Hospital provides:



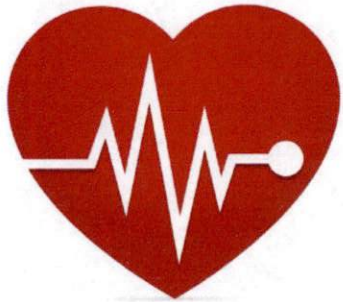
Multiple specialists on call 24/7

- **Cardiologists, specialized nurses and support staff and a specialized cardiac cath lab**
- **Back up cardiac surgery services including cardiac surgeon, cardiac anesthesiologists, specialized nurse and support staff and a fully equipped heart operating room**



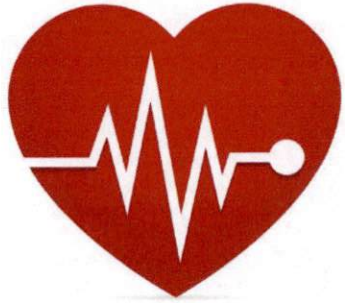
Time = Muscle

Once the heart artery becomes blocked from cholesterol plaque, the heart muscle starts dying. The faster the heart artery can be opened, the greater number of heart cells can stay alive, resulting in stronger heart muscle and a better outcome



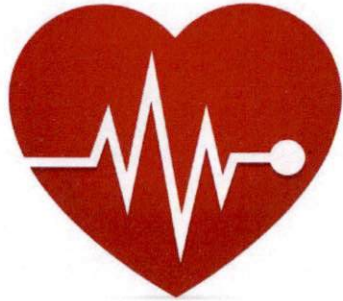
Hospitals refer to the time it takes to treat a STEMI patient as “door to balloon” time. That’s the time it takes from the arrival of the patient in the emergency room to the catheterization lab where a balloon angioplasty is performed.

Angioplasty is a life-saving procedure which involves a balloon-tipped catheter being threaded into the blocked artery. When the balloon is inflated, blood flow is restored to the heart.



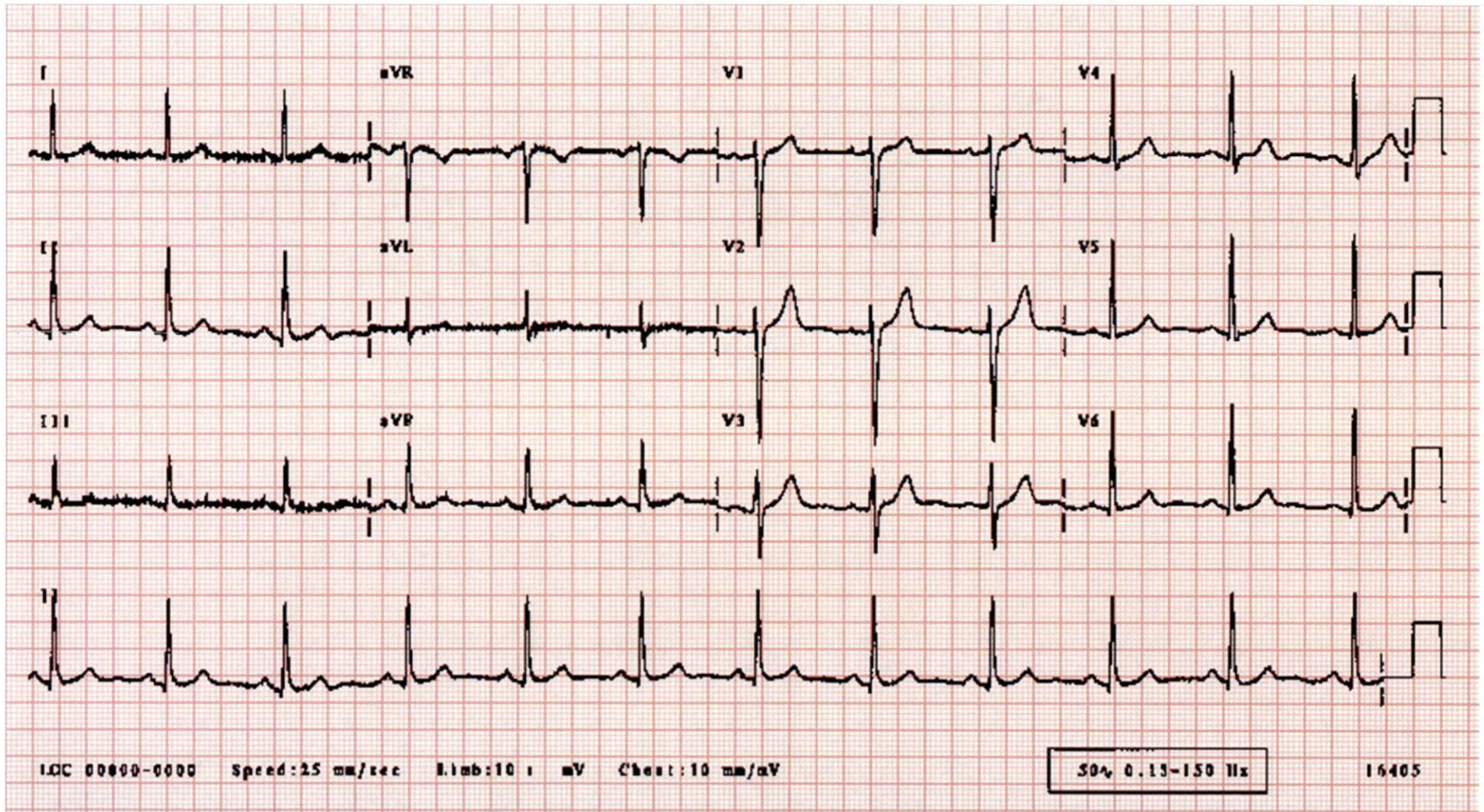
Guidelines developed over the past decade call for hospitals to meet a 90-minute or less door to balloon time.

At St. Joseph Hospital, the door to balloon time is well below the national guideline at 71 minutes.

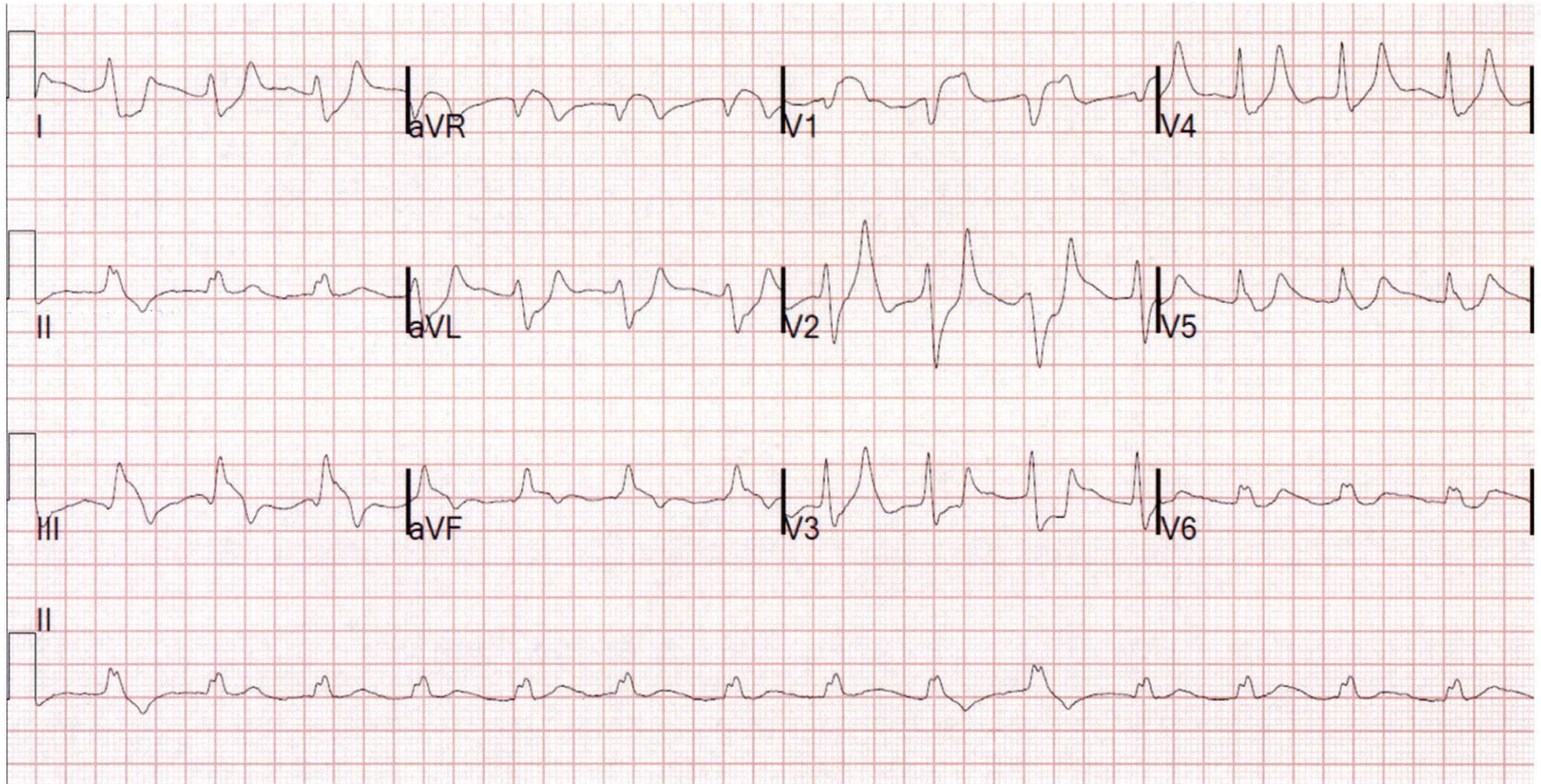


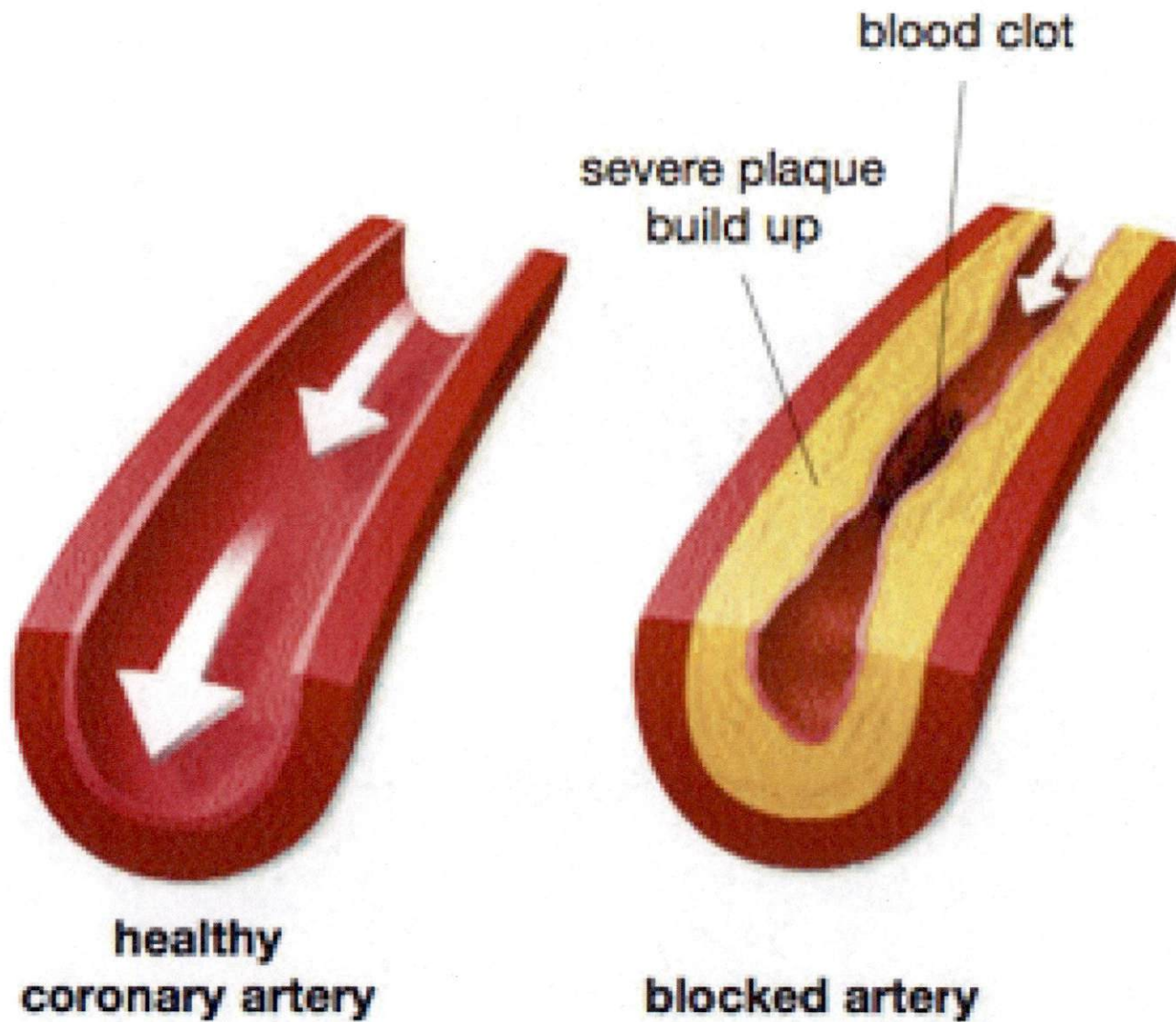
A successful program requires a high-level of coordination between ambulance paramedics, emergency department staff and the cardiac team to provide very rapid interventions to minimize heart damage.

Normal EKG



EKG with ST Segment elevated





STEMI Team



Sacred Encounters Perfect Care Healthiest Communities

St. Joseph Health 
Redwood Memorial • St. Joseph

Cath Lab



Sacred Encounters Perfect Care Healthiest Communities

St. Joseph Health 
Redwood Memorial • St. Joseph



Trauma Program Update

Trauma center designation means that our hospital has the staff and equipment necessary to provide immediate care for patients with severe traumatic injuries

Treated is provided by a team of specialists who are on call 24/7.



LEVEL III Trauma Center

A Level III Trauma Center has demonstrated an ability to provide prompt assessment, resuscitation, stabilization of injured patients and emergency operations.



LEVEL III Trauma Center

- **24-hour immediate coverage by:**
 - ✓ **Emergency medicine physicians**
 - ✓ **Trauma surgeons**
 - ✓ **Orthopedic surgeons**
 - ✓ **Anesthesiologists**
 - ✓ **Fully equipped operating room**
 - ✓ **Specially trained nurses and support staff and the prompt availability of general surgeons and anesthesiologists.**



LEVEL III Trauma Center

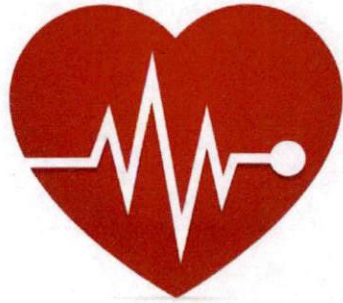
- **St. Joseph Hospital is in the implementation stage**
- **Will apply for certification early 2017**
- **Have recruited:**
 - ✓ **Trauma Surgeon Medical Director**
 - ✓ **Trauma Orthopedic Surgeon**
 - ✓ **Trauma Program Manager**

Trauma Bay



Sacred Encounters Perfect Care Healthiest Communities

St. Joseph Health 
Redwood Memorial • St. Joseph



Summary



Emergency Cardiac Care and a new Trauma Program are two examples of our dedication to providing our community with state of the art care here at home.