

PUHL AS-BUILT PLAN

COASTAL DEVELOPMENT PERMIT
499 HUMBOLDT LOOP, SHELTER COVE, CA 95589
APN 109-291-019

GENERAL NOTES:

- LOCATIONS AND ELEVATIONS OF EXISTING UNDERGROUND UTILITIES SHOWN HEREON ARE FROM RECORD INFORMATION ONLY AND ARE SHOWN FOR INFORMATION ONLY.
- DO NOT USE SCALED DIMENSIONS, USE WRITTEN DIMENSIONS. WHERE NO DIMENSIONS ARE SHOWN, CONSULT ENGINEER FOR CLARIFICATION BEFORE PROCEEDING WITH WORK.
- THESE PLANS SHALL NOT BE CHANGED OR REUSED WITHOUT WRITTEN APPROVAL BY THE ENGINEER.
- EXISTING GROUND SURFACE DEVELOPED FROM FIELD SURVEY BY LACO ASSOCIATES ON AUGUST 21, 2023. ONLY CONDITIONS EXISTING AT THAT TIME ARE REFLECTED.
- ORIGINAL GROUND SURFACE WAS ESTIMATED IN AUTODESK CIVIL 3D.
- APPROXIMATELY 40 CUBIC YARDS OF SOIL WAS ESTIMATED TO CONSTRUCT THE EXISTING GRADING.

SURVEY NOTES:

FIELD SURVEY BY LACO ASSOCIATES ON AUGUST 21, 2023. ONLY CONDITIONS EXISTING AT THAT TIME ARE REFLECTED ON THIS MAP.

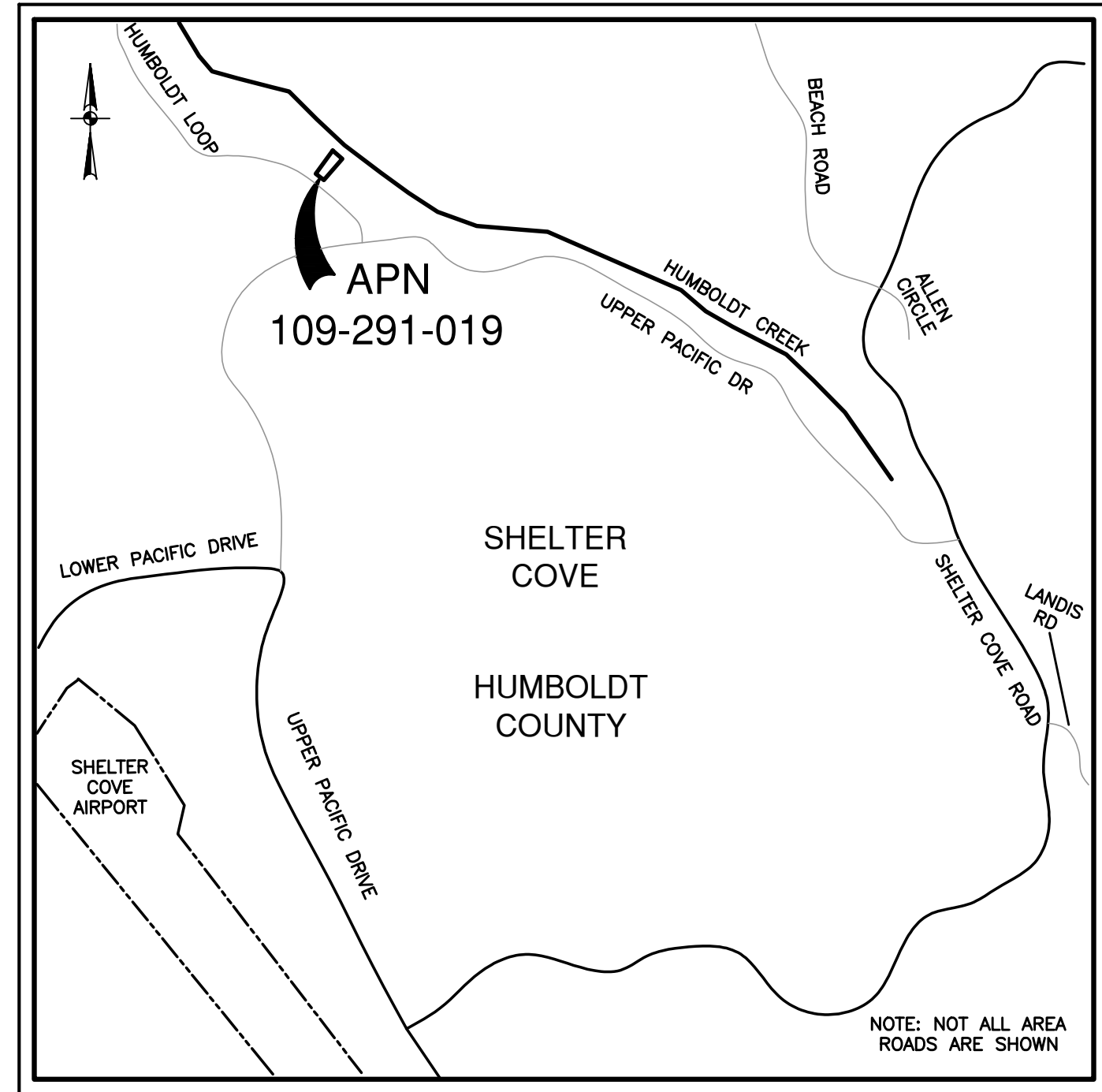
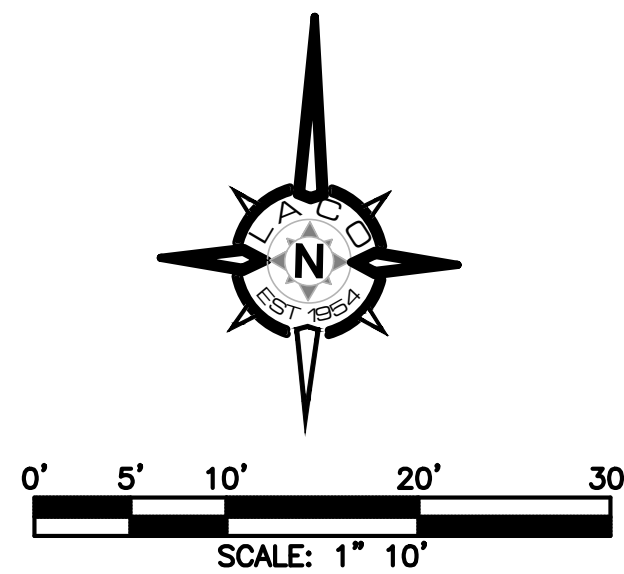
(UNDERGROUND UTILITIES AND) SUBSURFACE CONDITIONS NOT SURVEYED.

CONTOUR INTERVAL IS ONE FOOT

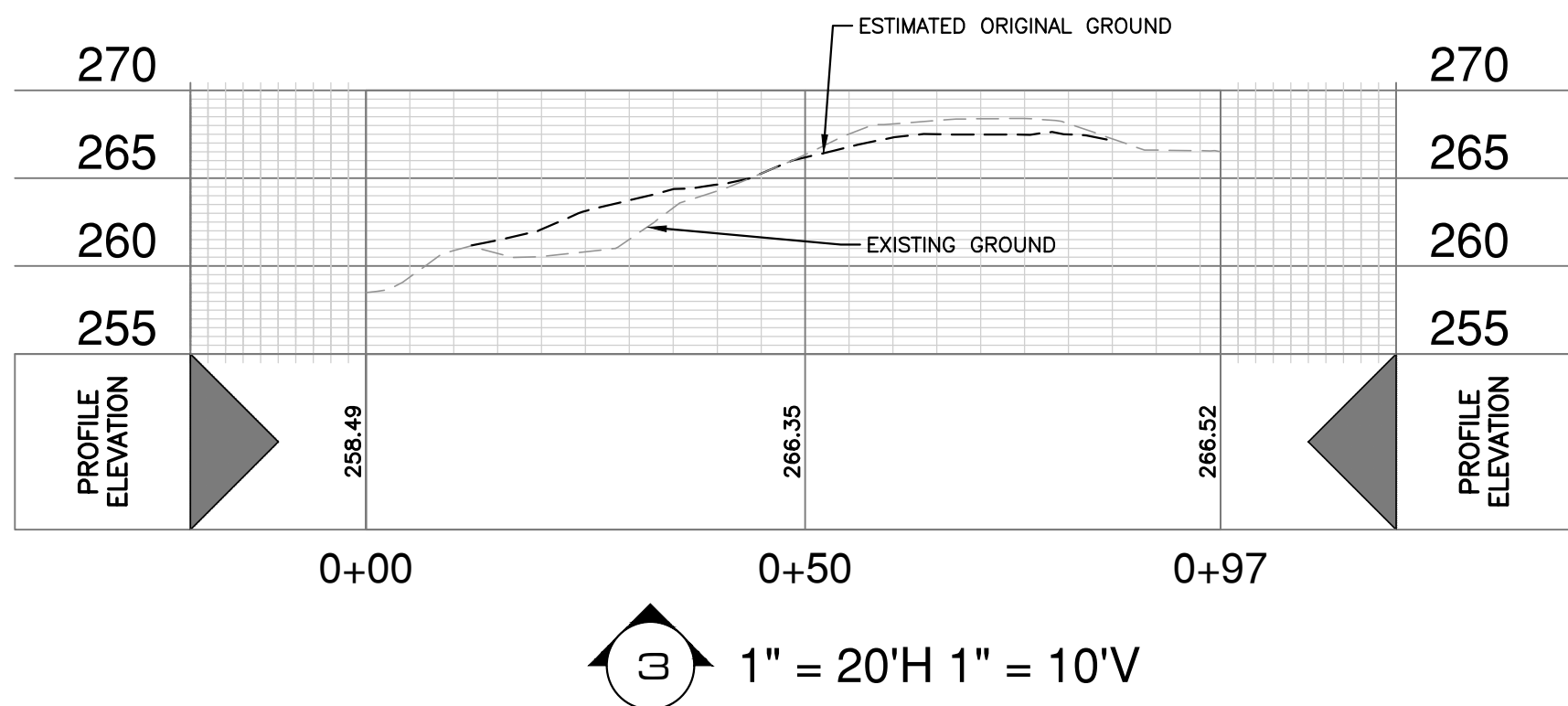
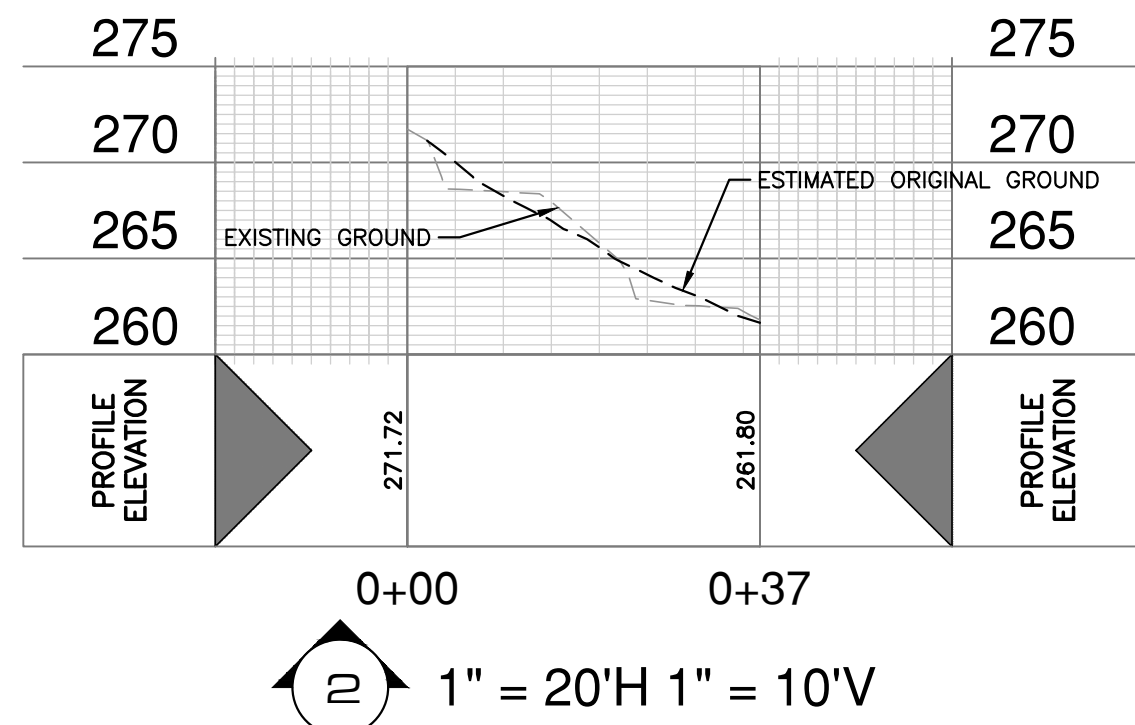
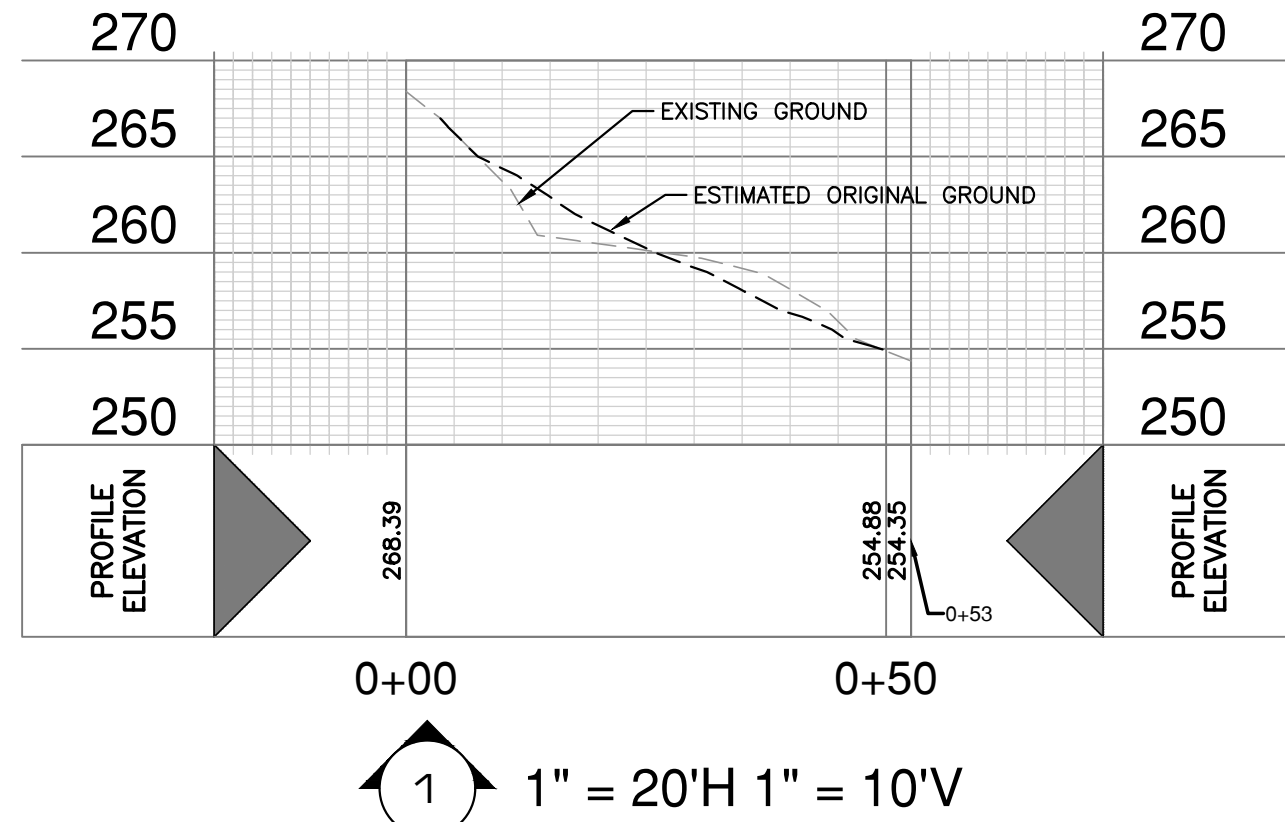
BASIS OF ELEVATIONS:
ELEVATIONS SHOWN HEREON ARE BASED ON THE NORTH AMERICAN VERTICAL DATUM OF 1988 (NAVD88), DERIVED FROM POST PROCESSING USING CORS STATIONS. THE BASIS OF ELEVATIONS FOR THIS SURVEY WAS ESTABLISHED FROM STATIC GPS OBSERVATIONS AT PROJECT CONTROL POINT #1 A SET MAG AND SHINER "LACO CONTROL", ELEVATION = 257.45 FEET (NAVD88).

BOUNDARY LINES SHOWN ON THIS MAP DERIVED FROM FOUND MONUMENTS AND RECORD DATA PER BOOK 17 MAPS PAGE 109 HUMBOLDT COUNTY RECORDS.

THE CONTENT OF THIS MAP WAS DEFINED BY CONTRACT AT THE REQUEST OF ASHLEY PUHL. LACO ASSOCIATES ACCEPTS NO LIABILITY FOR USE OF THIS MAP BY ANYONE OTHER THAN THE AUTHORIZED REPRESENTATIVE THEREOF.

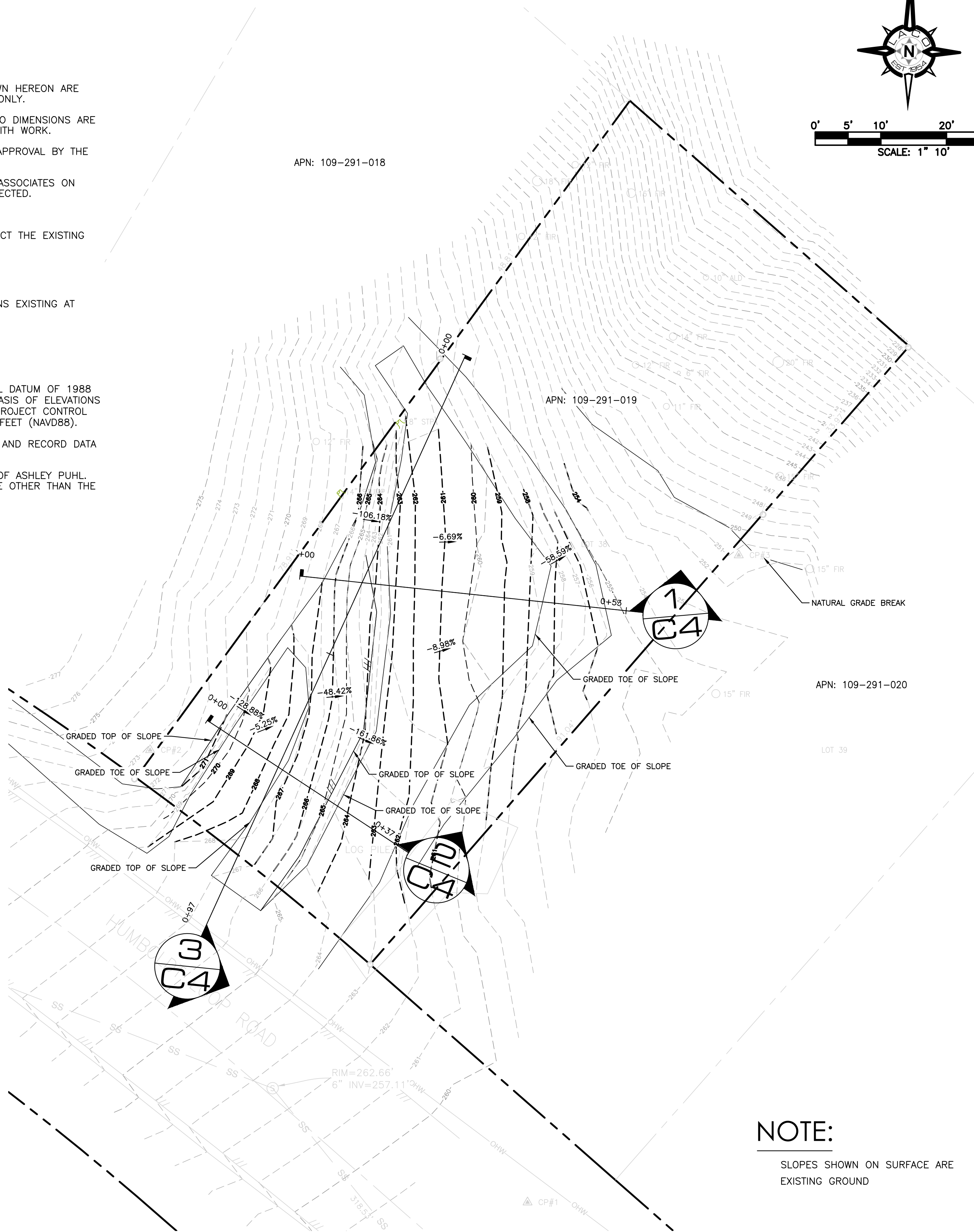


LOCATION MAP
NOT-TO-SCALE



LEGEND/ABBREVIATIONS

---	BOUNDARY LINE
---	ADJOINER BOUNDARY LINE
==	EDGE OF ASPHALT CONCRETE
---	CENTER LINE OF ROAD
---	MAJOR ESTIMATED ORIGINAL CONTOUR
---	MINOR ESTIMATED ORIGINAL CONTOUR
---	MAJOR EXISTING CONTOUR
---	MINOR EXISTING CONTOUR
---	GRADE BREAK
---	OVERHEAD WIRE
---	UNDERGROUND SANITARY SEWER LINE
---	ROAD CURB
---	TREE WITH SIZE AND TYPE
---	STUMP WITH SIZE
---	UTILITY POLE
---	SANITARY SEWER MANHOLE
---	ALD
---	STP
---	INV
---	APN



EXISTING CONDITIONS AND ESTIMATED ORIGINAL GROUND

NOTE:

SLOPES SHOWN ON SURFACE ARE
EXISTING GROUND

DATE	
NO.	
REVISION	

PRELIMINARY
NOT FOR
CONSTRUCTION

LACO
SURVEYORS | ENGINEERS | PLANNERS | GRANT WRITERS
lacoassociates.com

PUHL SHELTER COVE
499 HUMBOLDT LOOP, SHELTER COVE, CA, 95589
PUHL AS-BUILT PLAN
APN 109-291-019

PLAT NO.	----
JOB NO.	10524.00
DATE	DECEMBER 2024
DRAWN	----
CHECKED	RLW
DATE	BC
SHEET	C0.00