

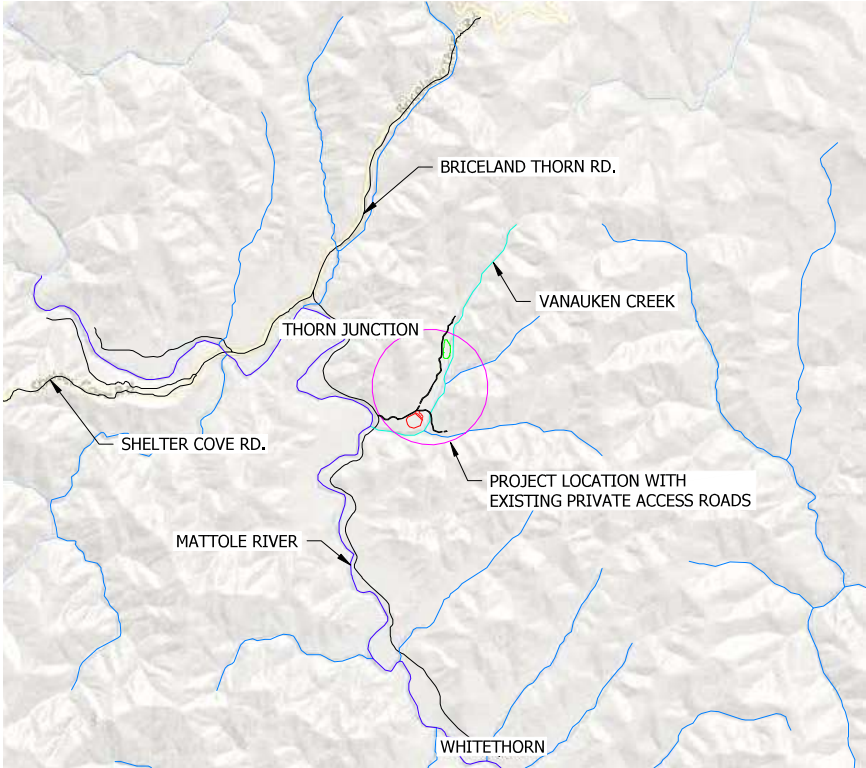
MATTOLE HEADWATERS - DROUGHT RELIEF

AGENT:

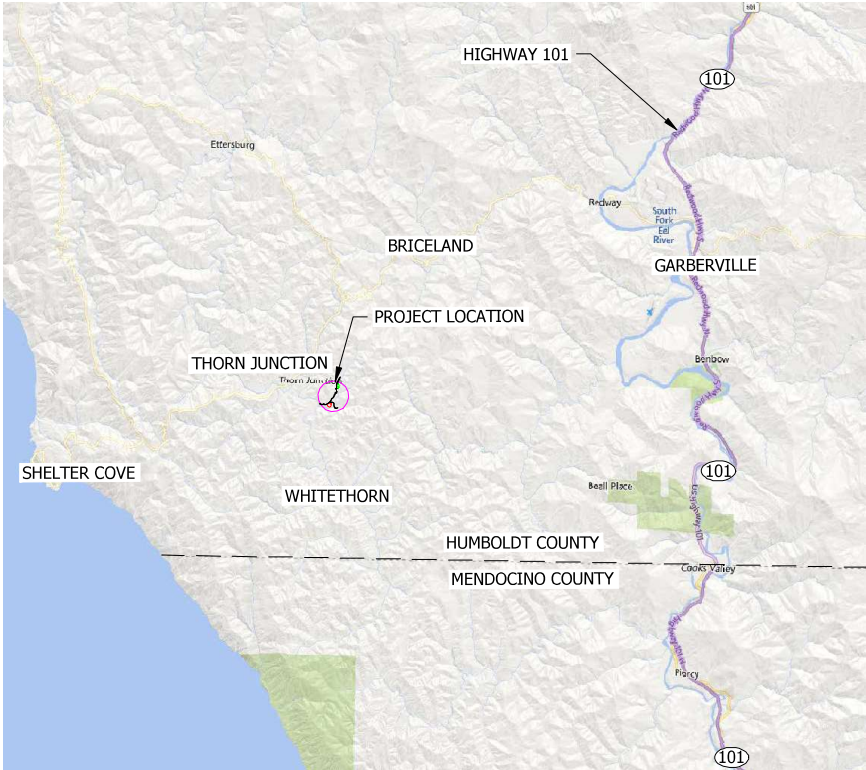
STILLWATER SCIENCES
850 G STREET, SUITE K
ARCATA, CA 95521

707-496-7075
JMONSCHKE@STILLWATERSCI.COM

VICINITY MAP



PROXIMITY MAP



Sheet List Table	
Sheet Number	Sheet Title
1	TITLE SHEET
2	OVERVIEW
3	EAST POND - PLAN
4	EAST POND - PROFILE AND SECTIONS
5	EAST POND - SPILLWAY
6	EAST POND - HILL SLOPE DRAINAGE PLAN
7	EAST POND - FRENCH DRAIN
8	EAST POND - FLOW AUGMENTATION PLAN
9	WEST POND - PLAN
10	WEST POND - PROFILE AND SECTION
11	WEST POND - SPILLWAY AND INFILTRATION GALLERY
12	WEST POND - HILL SLOPE DRAINAGE PLAN
13	WEST POND - FRENCH DRAIN
14	WEST POND - FLOW AUGMENTATION PLAN
15	EROSION CONTROL AND SEEDING PLAN
16	PLUMBING DETAILS
17	TRENCH AND EROSION CONTROL DETAILS

EARTHWORK ESTIMATES:

CUT: ~21000 CY

FILL: ~21000 CY ON-SITE

ABBREVIATIONS AND SYMBOLS:

<E> EXISTING

<P> PROPOSED

DETAIL # ON SHEET

8 SHEET #

GENERAL NOTES, TERMS, & CONDITIONS:

3. **DESIGN INTENT.** THESE DRAWINGS REPRESENT THE GENERAL DESIGN INTENT TO BE IMPLEMENTED AND THE CONTRACTOR IS RESPONSIBLE FOR ALL ITEMS SHOWN ON THESE PLANS. CONTRACTOR SHALL BE RESPONSIBLE FOR CONTACTING THE PROJECT MANAGER FOR ANY CLARIFICATIONS OR FURTHER DETAILS NECESSARY TO ACCOMMODATE ACTUAL SITE CONDITIONS. ANY DEVIATION FROM THESE PLANS WITHOUT THE RCD'S REPRESENTATIVE APPROVAL ARE AT THE CONTRACTOR'S OWN RISK AND EXPENSE. NOTIFY PROJECT MANAGER IMMEDIATELY OF ANY UNEXPECTED AND CHANGED CONDITIONS, SAFETY HAZARDS, AND ENVIRONMENTAL PROBLEMS ENCOUNTERED.
2. **JOB SITE CONDITIONS AND CONTRACTOR RESPONSIBILITY.** CONTRACTOR SHALL ASSUME SOLE AND COMPLETE RESPONSIBILITY FOR SITE CONDITIONS DURING THE COURSE OF THE CONSTRUCTION OF THIS PROJECT, INCLUDING THE SAFETY OF ALL PERSONS AND PROPERTY, AND ALL ENVIRONMENTAL PROTECTION ELEMENTS, WHETHER SHOWN ON THESE DRAWINGS OR NOT. CONTRACTOR SHALL FOLLOW ALL APPLICABLE CONSTRUCTION AND SAFETY REGULATIONS. THESE REQUIREMENTS SHALL APPLY CONTINUOUSLY AND WILL NOT BE LIMITED TO NORMAL WORKING HOURS. THE CONTRACTOR SHALL DEFEND, INDEMNIFY, AND HOLD THE CLIENT OR THE ENGINEER (STILLWATER SCIENCES) HARMLESS FROM ANY AND ALL LIABILITY, REAL OR ALLEGED, IN CONNECTION WITH THE PERFORMANCE OF WORK ON THIS PROJECT, EXCEPT FROM LIABILITY ARISING FROM THE SOLE NEGLIGENCE OF THE CLIENT OR ENGINEER.
3. **DAMAGE.** CONTRACTOR SHALL EXERCISE CARE TO AVOID DAMAGE TO EXISTING PUBLIC AND PRIVATE PROPERTY, INCLUDING NATIVE TREES AND SHRUBS, AND OTHER PROPERTY IMPROVEMENTS. IF CONTRACTOR CAUSES DAMAGES TO SUCH ITEMS, HE SHALL BE RESPONSIBLE FOR REPAIR OR REPLACEMENT IN LIKE NUMBER, KIND, CONDITION, AND SIZE. ANY SUCH COST MAY BE DEDUCTED BY OWNER FROM MONIES DUE CONTRACTOR UNDER THIS CONTRACT.
4. **LIMITS OF WORK, ACCESS, STAGING AND MOBILIZATION AREAS.** THE APPROXIMATE LIMITS OF WORK ARE SHOWN ON THE DRAWINGS. EXACT LIMITS OF WORK, POINTS OF INGRESS-EGRESS, CREEK CHANNEL ACCESS, MOBILIZATION, STAGING, AND WORK AREAS WILL BE FLAGGED IN THE FIELD BY THE ENGINEER. EQUIPMENT MAINTENANCE AND FUELING MUST OCCUR OUTSIDE OF THE CHANNEL AREA AS DESCRIBED IN THE ENVIRONMENTAL PERMITS FOR THE PROJECT.
5. **EARTHWORK QUANTITIES.** CONTRACTOR IS RESPONSIBLE FOR ALL EARTHWORK, INCLUDING GRADING, PROVISION AND PLACEMENT OF ROCK MEETING SIZE LIMITS, AS SHOWN ON DRAWINGS, AND DISPOSAL OF ALL EXCESS SOIL AND RUBBLE. EARTHWORK QUANTITIES, INCLUDING GRADING, PLACED ROCK RIP-RAP AND OFF-HAUL QUANTITY ESTIMATES PROVIDED BY THE ENGINEER ARE ESTIMATES ONLY. CLIENT AND ENGINEER DO NOT, EXPRESSLY OR OTHERWISE BY IMPLICATION, EXTEND ANY WARRANTY TO EARTHWORK CALCULATIONS.
6. AREAS TO BE GRADED SHALL BE CLEARED OF ALL VEGETATION INCLUDING ROOTS AND OTHER UNSUITABLE MATERIAL FOR A STRUCTURAL FILL, THEN SCARIFIED TO A DEPTH OF 6 INCHES PRIOR TO PLACING OF ANY FILL.
7. AREAS WITH EXISTING SLOPES WHICH ARE TO RECEIVE FILL MATERIAL SHALL BE KEYED AND BENCHED.
8. FILL MATERIAL SHALL BE SPREAD IN LIFTS NOT EXCEEDING 6 INCHES IN COMPACTED THICKNESS, MOISTENED OR DRIED AS NECESSARY TO MEAN OPTIMUM MOISTURE CONTENT AND COMPACTED BY AN APPROVED METHOD. FILL MATERIAL SHALL BE COMPACTED TO A MINIMUM OF 85% MAXIMUM DENSITY AS DETERMINED BY 1957 ASTM D - 1557 - 91 MODIFIED PROCTOR (AASHO) TEST OR SIMILAR APPROVED METHODS.
9. CUT SLOPES SHALL NOT EXCEED A GRADE OF 3 HORIZONTAL TO 1 VERTICAL. FILL AND COMBINATION FILL AND CUT SLOPES SHALL NOT EXCEED 3 HORIZONTAL TO 1 VERTICAL. SLOPES OVER THREE FEET IN VERTICAL HEIGHT SHALL BE PLANTED WITH APPROVED PERENNIAL OR TREATED WITH EQUALLY APPROVED EROSION CONTROL MEASURES PRIOR TO FINAL INSPECTION.
10. BEST MANAGEMENT PRACTICES FOR CONSTRUCTION ACTIVITIES: ERODED SEDIMENTS AND OTHER POLLUTANTS MUST BE RETAINED ONSITE AND MAY NOT BE TRANSPORTED FROM THE SITE VIA SHEET FLOW, SWALES, AREA DRAINS, NATURAL DRAINAGE COURSES, OR WIND. STOCKPILES OF EARTH AND OTHER CONSTRUCTION RELATED MATERIALS MUST BE PROTECTED FROM BEING TRANSPORTED FROM THE SITE BY THE FORCES OF WIND OR WATER. FUELS, OILS, SOLVENTS, AND OTHER TOXIC MATERIALS MUST BE STORED IN ACCORDANCE WITH THEIR LISTING AND ARE NOT TO CONTAMINATE THE SOIL AND SURFACE WATERS. ALL APPROVED STORAGE CONTAINERS ARE TO BE PROTECTED FROM THE WEATHER. SPILLS MAY NOT BE WASHED INTO THE DRAINAGE SYSTEM. EXCESS OR WASTE CONCRETE MAY NOT BE WASHED INTO PUBLIC WAY OR ANY OTHER DRAINAGE SYSTEM. PROVISIONS MUST BE MADE TO RETAIN CONCRETE WASTES ON SITE UNTIL THEY CAN BE DISPOSED AS A SOLID WASTE. TRASH AND CONSTRUCTION RELATED SOLID WASTE MUST BE DEPOSITED INTO A COVERED WASTE RECEPTACLE TO PREVENT CONTAMINATION OF RAINWATER AND DISPERSAL BY WIND. SEDIMENTS AND OTHER MATERIAL MAY NOT BE TRACKED FROM TO THE SITE BY VEHICLE TRAFFIC.

MATTOLE HEADWATERS - DROUGHT RELIEF

HUMBOLDT COUNTY, CA

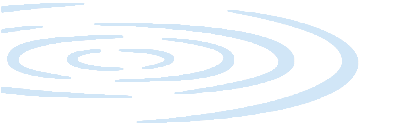
Stillwater Sciences

P: (707) 822-9607

REVISIONS

NO.	DESCRIPTION	DATE

65% DESIGN REVIEW DRAWINGS



PROJECT NUMBER: 588.11

SCALE: AS NOTED

DATE: 12/12/24

DESIGN: JB/JM

DRAWN: JB

CHECKED: JM

TITLE SHEET

SHEET 1 OF 17



MATTOLE HEADWATERS - DROUGHT RELIEF

HUMBOLDT COUNTY, CA

Stillwater Sciences

850 G STREET SUITE K
ARCATA, CA 95521
P: (707) 822-9607

REVISIONS

NO.	DESCRIPTION	DATE

65% DESIGN REVIEW DRAWINGS

PROJECT NUMBER: 588.11

SCALE: AS NOTED

DATE: 12/12/24

DESIGN: JB/JM

DRAWN: JB

CHECKED: JM

APPROVED: JM

OVERVIEW

SHEET 2 OF 17

NOTE:

NO NEW ROADS ARE PROPOSED FOR THIS PROJECT.
ALL AVAILABLE ACCESS ROUTES ARE EXISTING.

1

OVERVIEW - PLAN

Scale: 1:200

0100200400

FEET

SCALE: 1" = 200'

LOAST COAST FORESTLANDS LLC
APN - 215162022

LIDAR TOPOGRAPHY EXTENT

BRICELAND/THORN ROAD

MATTOLE RIVER

LOAST COAST FORESTLANDS LLC
APN - 215162021

<E> PRIVATE RD.

<P> STAGING AREA

<P> WEST POND

<E> 89' RAILCAR BRIDGE

PLOW

VANAUKEN CREEK

PARCEL BOUNDARY

<P> EAST POND

LAST SAVED: 12/10/2024

PLOT DATE: 12/12/2024

PLOT STYLE: STILLWATER-GRAYSCALE-240

IF BAW DOES NOT MEASURE, DRAWING IS NOT TO SCALE - MUST ACCORDING

RELIEF: L SHEETS/ OVERVIEW.DWG

STILLWATER SCIENCES\68433\ - MATTOLE HEADWATERS\PROJECT FILES\68433.11 - MATTOLE DROUGHT