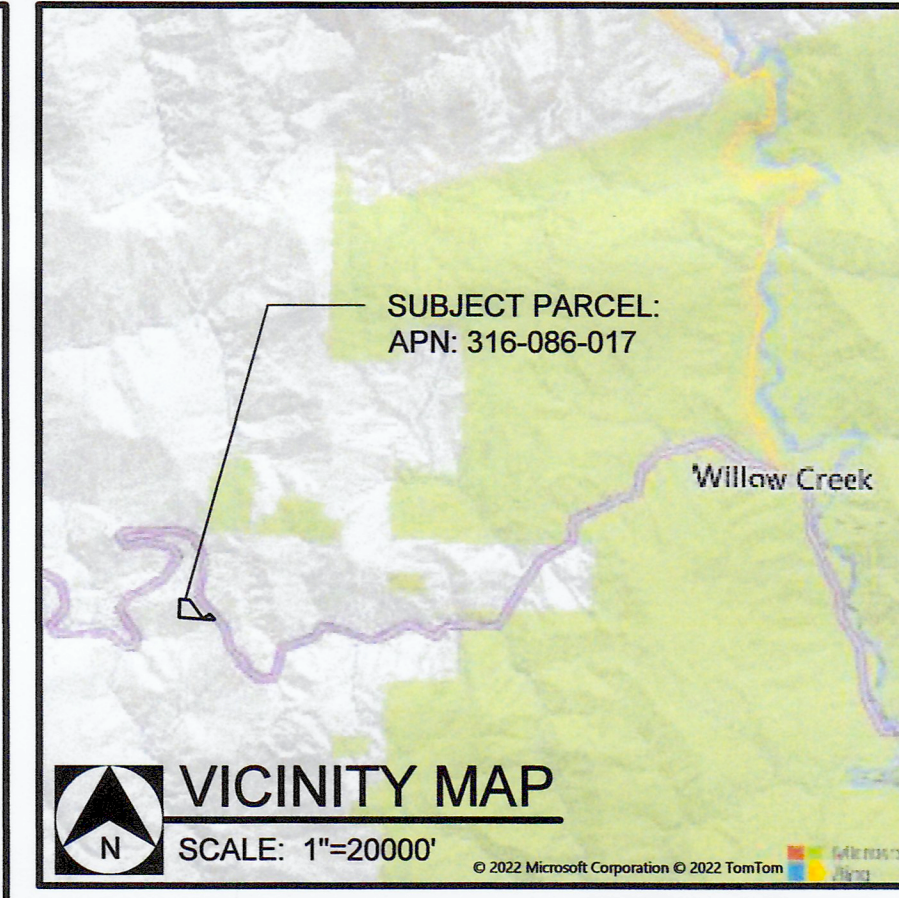


PARCEL INFORMATION:

APN: 316-086-017
 ZONING: AG, RA20
 LOT SIZE: 49.00 ACRES (ASSESSED),
 75.38 ACRES (GIS)



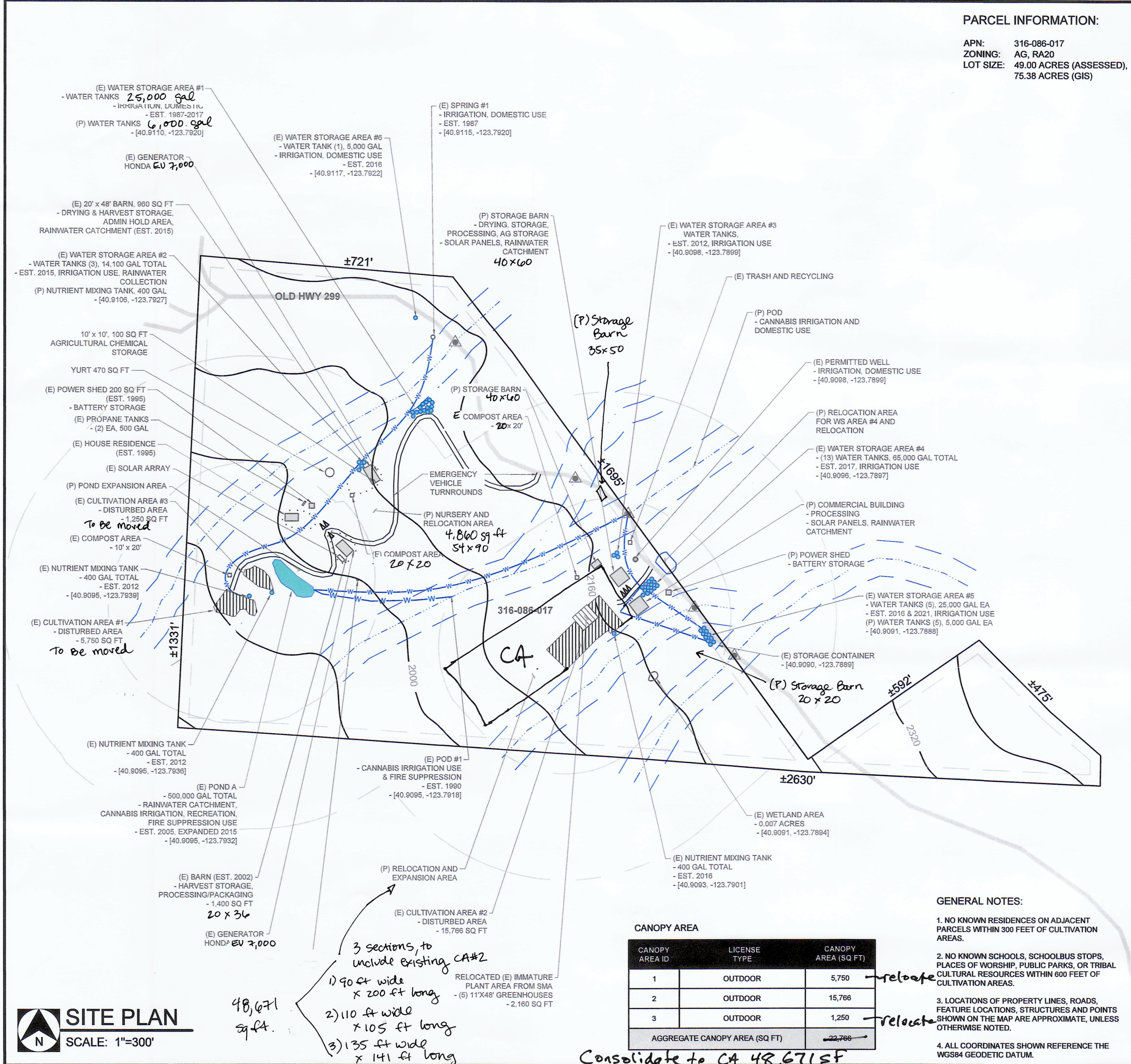
DIRECTIONS TO SITE

FROM ARCATA, CA:

1. GO NORTH ON US HWY 101, TOWARDS CA-299 E EXIT, 2.0 MILES.
2. CONTINUE ON TO CA-299 E, 26.3 MILES.
3. TURN RIGHT ONTO OLD HWY 299, 1.5 MILES.
4. ARRIVED AT PROPERTY.

LEGEND

- PROPERTY LINE
- 30' SETBACK FROM PROPERTY LINE
- 300' SETBACK FROM CULTIVATION AREAS
- 600' SETBACK FROM CULTIVATION AREAS
- CLASS III WATERCOURSE WITH 50 FT STREAM SIDE MANAGEMENT AREA BUFFER
- WATER LINE FOR CULTIVATION ACTIVITIES
- PUBLIC ROAD
- ACCESS ROAD
- STRUCTURE
- OUTDOOR CULTIVATION AREA
- SEPTIC SYSTEM
- CULVERT
- PARKING SPACE, 9'x18'
- EXISTING
- PROPOSED
- NOT USED FOR CULTIVATION
- USED FOR CULTIVATION



SITE PLAN
 SCALE: 1"=300'