

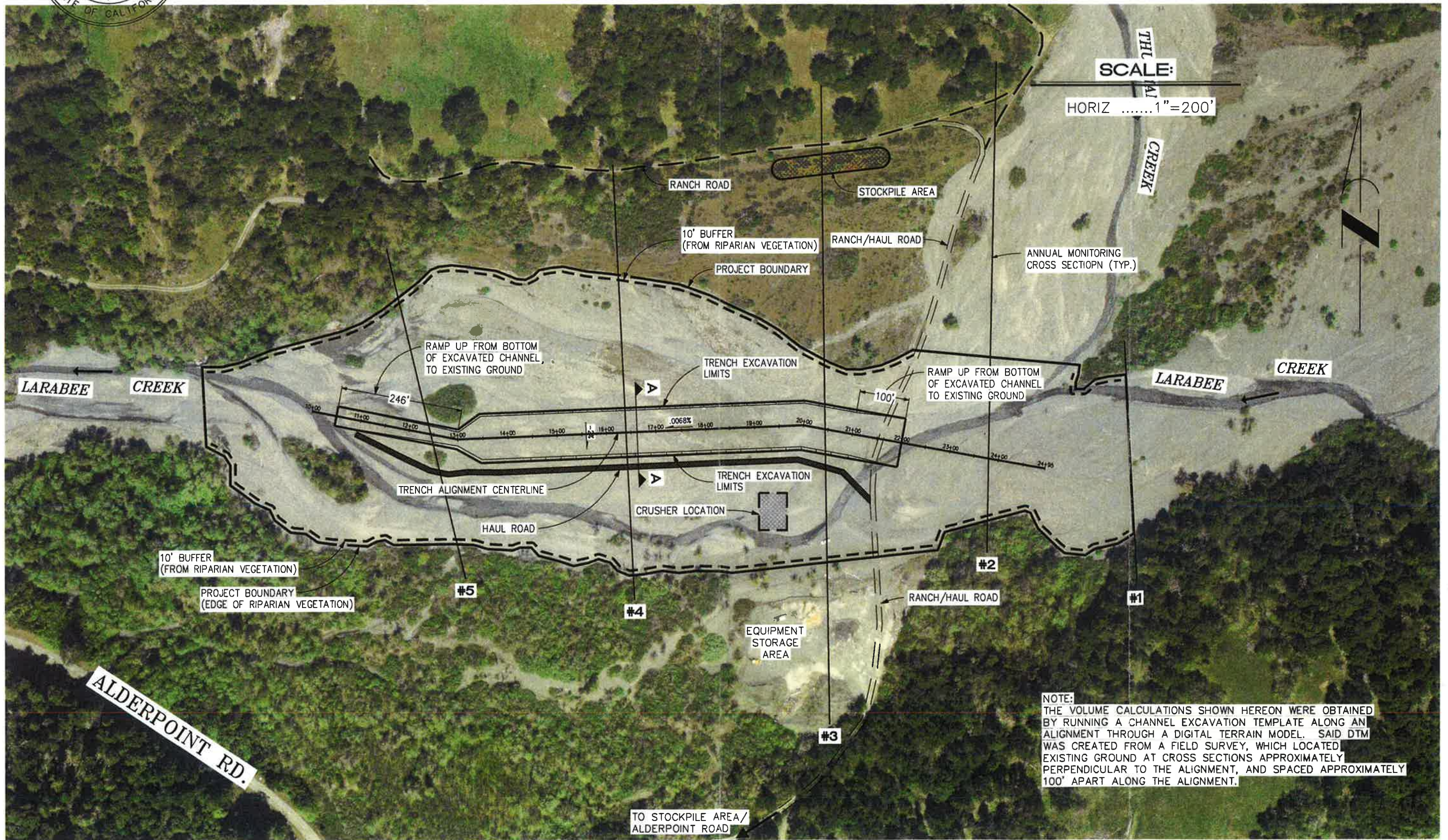


Robert L. Burnett *9/15/05*
 Robert L. Burnett R.C.E. 36210 Exp. 6/30/10

NATURAL RESOURCES DIVISION HANK SEEMAN	
DRAWN BY: MDC	PROJECT NO.: A24
REVIEWED BY: AG	PLOT DATE: JUNE 24, 2008
APPROVED BY: HS	
DRAWING FILE NAME: L:\projects\~Larabee Creek\dwg\2008 Larabee Creek Pre-extraction.dwg	

COUNTY OF HUMBOLDT DEPARTMENT OF PUBLIC WORKS
CHARLES BAR / LARABEE CREEK
SITE PLAN/TYPICAL EXTRACTION PLAN

SHEET
1
OF
4



NOTE:
 THE VOLUME CALCULATIONS SHOWN HEREON WERE OBTAINED BY RUNNING A CHANNEL EXCAVATION TEMPLATE ALONG AN ALIGNMENT THROUGH A DIGITAL TERRAIN MODEL. SAID DTM WAS CREATED FROM A FIELD SURVEY, WHICH LOCATED EXISTING GROUND AT CROSS SECTIONS APPROXIMATELY PERPENDICULAR TO THE ALIGNMENT, AND SPACED APPROXIMATELY 100' APART ALONG THE ALIGNMENT.