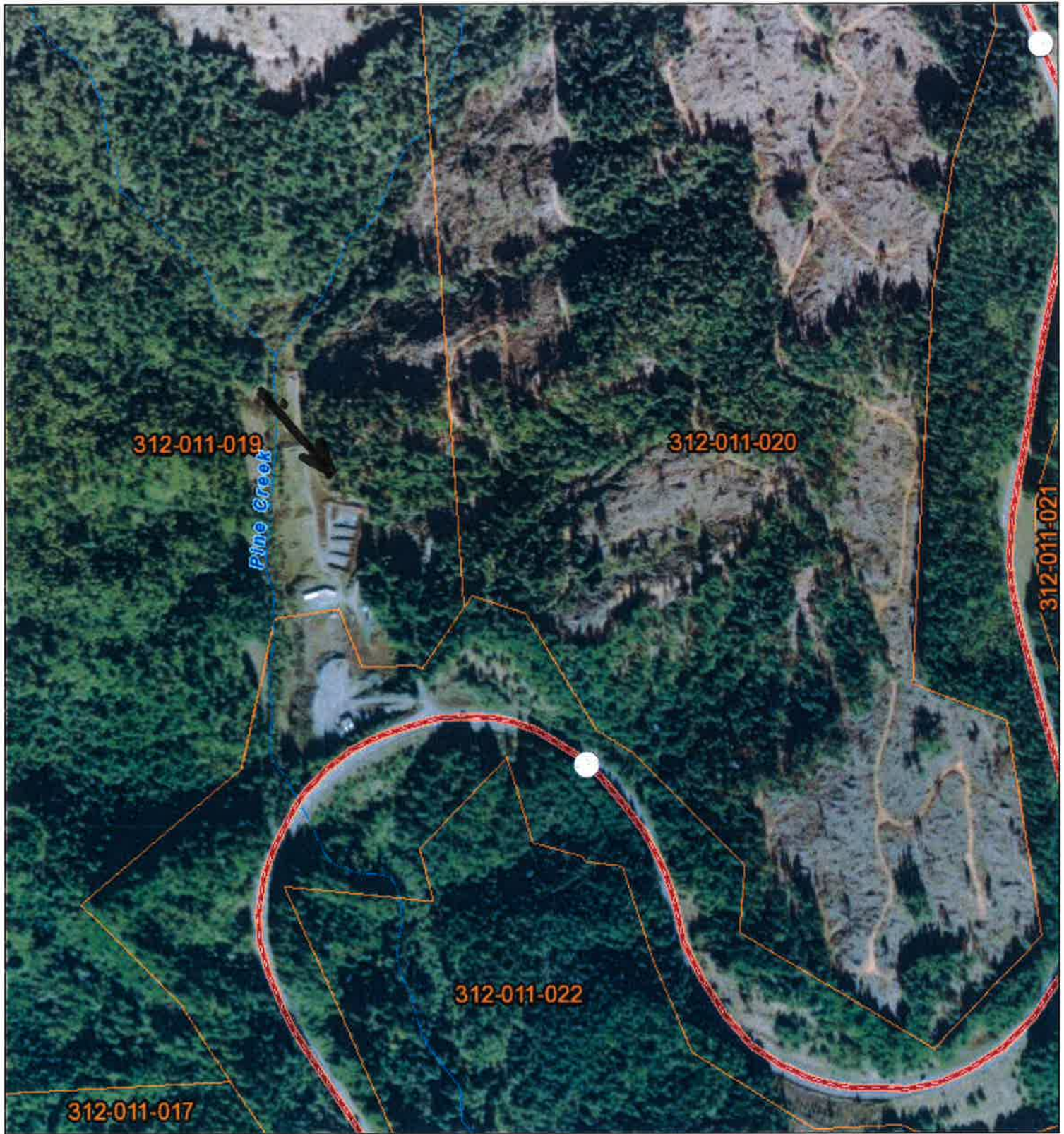


Google

© 2020 Google

Data SIO, NOAA, U.S. Navy, NGA, GEBCO

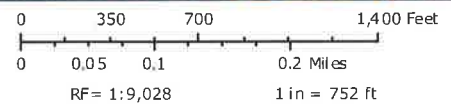
Imagery Date: 4/30/2019 40°53'22.94" N 123°59'19.72" W elev. 0 ft



POD GIS Map

Humboldt County Planning and Building Department

- | | | |
|---------------------------|---------------------------|---------------------------------|
| Highways and Roads | — Private or Unclassified | --- Intermittent |
| Principal Arterials | — Major River or Stream | --- Subsurface |
| Minor Arterials | Blue Line Streams | --- City Boundary |
| Major Collectors | — Perennial 1-3 | --- Counties |
| Minor Collectors | — Perennial >4 | --- Parcels (Owners) |
| Local Roads | | --- Parcels (Owners, no labels) |



Printed: March 26, 2020 Web AppBuilder 2.0 for ArcGIS

Map Disclaimer:
 While every effort has been made to assure the accuracy of this information, it should be understood that it does not have the force & effect of law, rule, or regulation. Should any difference or error occur, the law will take precedence.

Source: Humboldt County GIS, Esri, HERE, Garmin, (c) OpenStreetMap contributors, and the GIS user community, Source: Esri, DigitalGlobe, GeoEye, Earthstar Geographics, CNES/Airbus DS, USDA, USGS, AeroGRID, IGN, and the GIS User Community