

SUPPLEMENTAL INFORMATION #1

For Planning Commission Agenda of:
May 19, 2022

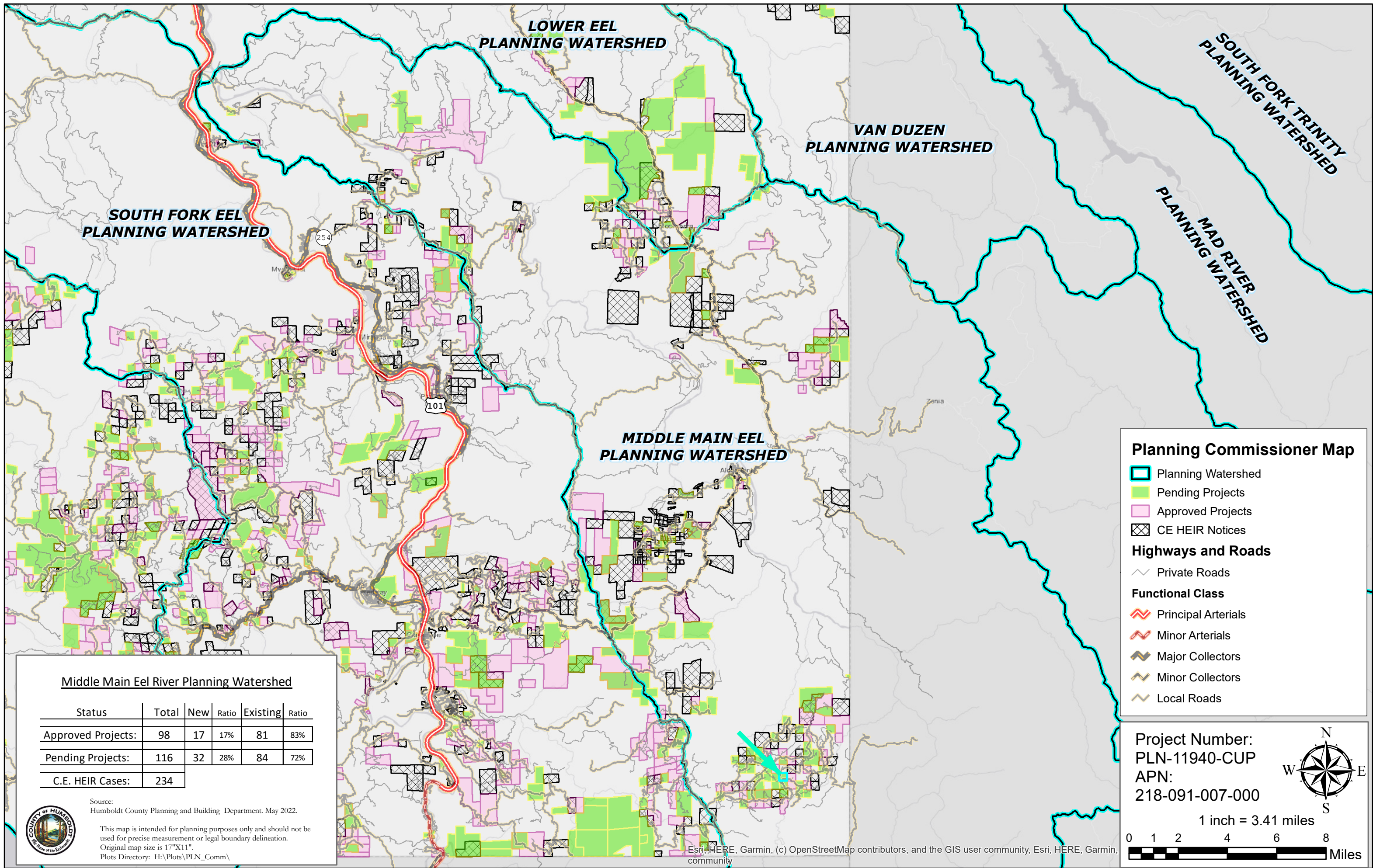
<input checked="" type="checkbox"/>	Consent Agenda Item
<input type="checkbox"/>	Continued Hearing Item
<input type="checkbox"/>	Public Hearing Item
<input type="checkbox"/>	Department Report
<input type="checkbox"/>	Old Business

Re: Serendipity Collective; Daydream Enterprises; Bear Creek Ranch Farms; Hog Trap
Record Number PLN-11940-CUP; PLN-12493-CUP; PLN-12656-CUP; PLN-13336-CUP
Assessor Parcel Number 218-091-007; 208-231-011; 208-271-003; 218-271-003

Attached for the Planning Commission's record and review is (are) the following supplementary information items:

1. Watershed Maps for Planning Commissioners

- Watershed Map for **Serendipity Collective**, PLN-11940-CUP, APN: 218-091-007.
- Watershed Map for **Daydream Enterprises**, PLN-12493-CUP, APN: 208-231-011.
- Watershed Map for **Bear Creek Ranch Farms**, PLN-12656-CUP, APN: 208-271-003.
- Watershed Map for **Hog Trap**, PLN-13336-CUP, APN: 218-271-003.



**LOWER EEL
PLANNING WATERSHED**

**VAN DUZEN
PLANNING WATERSHED**

**SOUTH FORK TRINITY
PLANNING WATERSHED**

**MAD RIVER
PLANNING WATERSHED**

**SOUTH FORK EEL
PLANNING WATERSHED**

**MIDDLE MAIN EEL
PLANNING WATERSHED**

Planning Commissioner Map

- Planning Watershed
- Pending Projects
- Approved Projects
- CE HEIR Notices

Highways and Roads

- Private Roads
- Principal Arterials
- Minor Arterials
- Major Collectors
- Minor Collectors
- Local Roads

Middle Main Eel River Planning Watershed

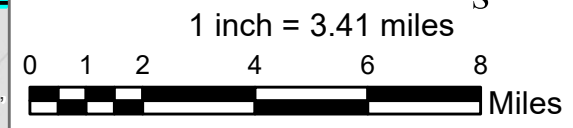
Status	Total	New	Ratio	Existing	Ratio
Approved Projects:	98	17	17%	81	83%
Pending Projects:	116	32	28%	84	72%
C.E. HEIR Cases:	234				

Source:
Humboldt County Planning and Building Department, May 2022.

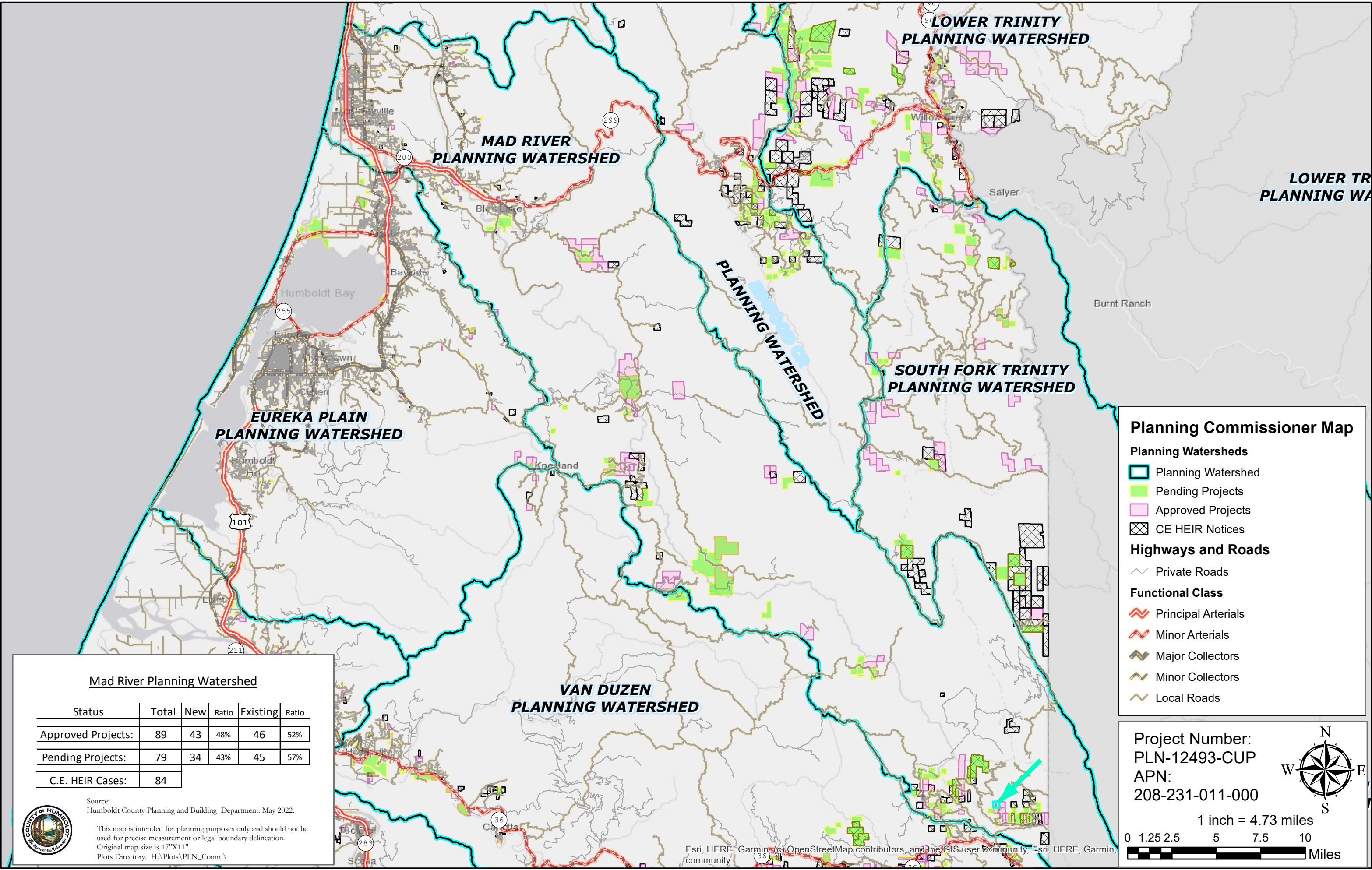


This map is intended for planning purposes only and should not be used for precise measurement or legal boundary delineation.
Original map size is 17"x11".
Plots Directory: H:\Plots\PLN_Comm\

Project Number:
PLN-11940-CUP
APN:
218-091-007-000



Esri, HERE, Garmin, (c) OpenStreetMap contributors, and the GIS user community, Esri, HERE, Garmin, community



Planning Commissioner Map

Planning Watersheds

- Planning Watershed
- Pending Projects
- Approved Projects
- CE HEIR Notices

Highways and Roads

- Private Roads
- Principal Arterials
- Minor Arterials
- Major Collectors
- Minor Collectors
- Local Roads

Project Number:
 PLN-12493-CUP
 APN:
 208-231-011-000

1 inch = 4.73 miles

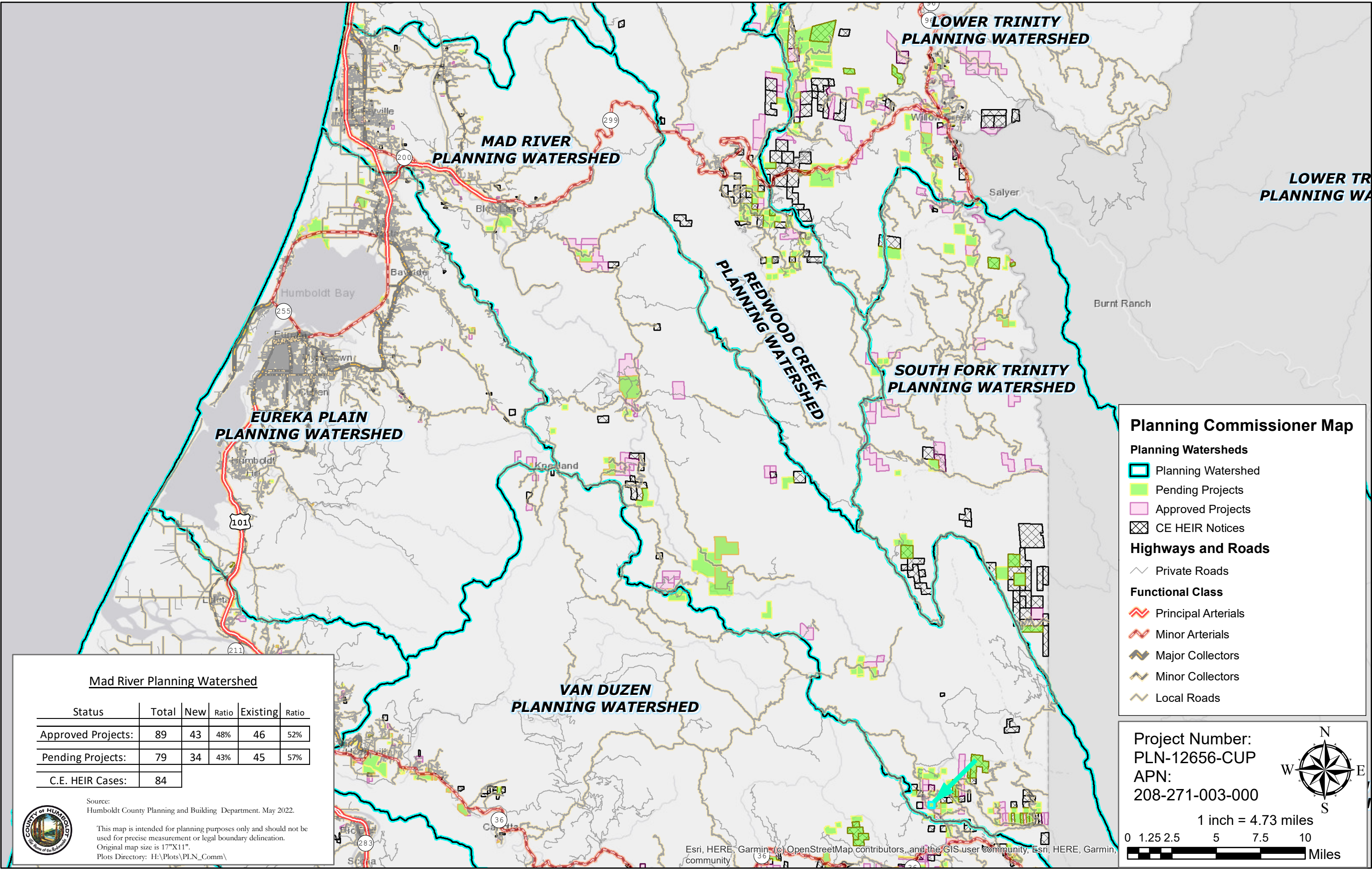
0 1.25 2.5 5 7.5 10
 Miles

Mad River Planning Watershed

Status	Total	New	Ratio	Existing	Ratio
Approved Projects:	89	43	48%	46	52%
Pending Projects:	79	34	43%	45	57%
C.E. HEIR Cases:	84				

Source:
 Humboldt County Planning and Building Department, May 2022.

This map is intended for planning purposes only and should not be used for precise measurement or legal boundary delineation.
 Original map size is 17"X11".
 Plots Directory: H:\Plots\PLN_Comm\



Planning Commissioner Map

- Planning Watersheds**
- Planning Watershed
 - Pending Projects
 - Approved Projects
 - CE HEIR Notices
- Highways and Roads**
- Private Roads
- Functional Class**
- Principal Arterials
 - Minor Arterials
 - Major Collectors
 - Minor Collectors
 - Local Roads

Project Number:
 PLN-12656-CUP
 APN:
 208-271-003-000

1 inch = 4.73 miles

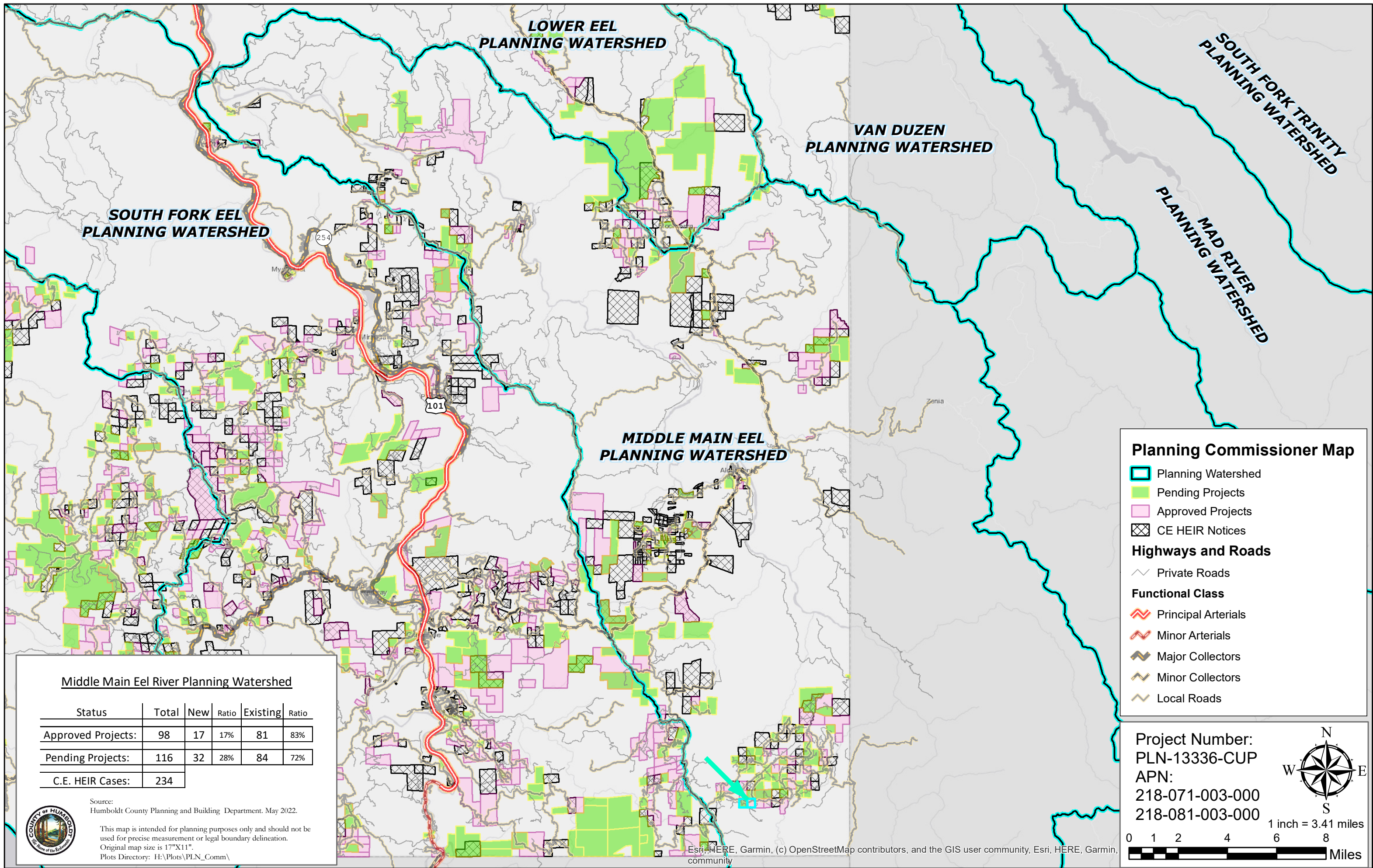
0 1.25 2.5 5 7.5 10
 Miles

Mad River Planning Watershed

Status	Total	New	Ratio	Existing	Ratio
Approved Projects:	89	43	48%	46	52%
Pending Projects:	79	34	43%	45	57%
C.E. HEIR Cases:	84				

Source:
 Humboldt County Planning and Building Department, May 2022.

This map is intended for planning purposes only and should not be used for precise measurement or legal boundary delineation.
 Original map size is 17"X11".
 Plots Directory: H:\Plots\PLN_Comm\



Planning Commissioner Map

- Planning Watershed
 - Pending Projects
 - Approved Projects
 - CE HEIR Notices
- Highways and Roads**
- Private Roads
- Functional Class**
- Principal Arterials
 - Minor Arterials
 - Major Collectors
 - Minor Collectors
 - Local Roads

Middle Main Eel River Planning Watershed

Status	Total	New	Ratio	Existing	Ratio
Approved Projects:	98	17	17%	81	83%
Pending Projects:	116	32	28%	84	72%
C.E. HEIR Cases:	234				

Source:
Humboldt County Planning and Building Department, May 2022.

This map is intended for planning purposes only and should not be used for precise measurement or legal boundary delineation.
Original map size is 17"x11".
Plots Directory: H:\Plots\PLN_Comm\



Project Number:
PLN-13336-CUP
APN:
218-071-003-000
218-081-003-000

1 inch = 3.41 miles

0 1 2 4 6 8 Miles

Esri, HERE, Garmin, (c) OpenStreetMap contributors, and the GIS user community