

Figure 1: The area outlined in red is comprised of parcels in the vicinity that have zoning identical to the subject parcel (RS-B-5(2.5)). Four parcels in the southern portion of the figure have been excluded, as they are split zoned RS-B-5(2.5) and R-1-B-3. The average size of the lots in the outlined area is 2.45 acres using assessed lot size, and 2.48 acres using GIS measurements.

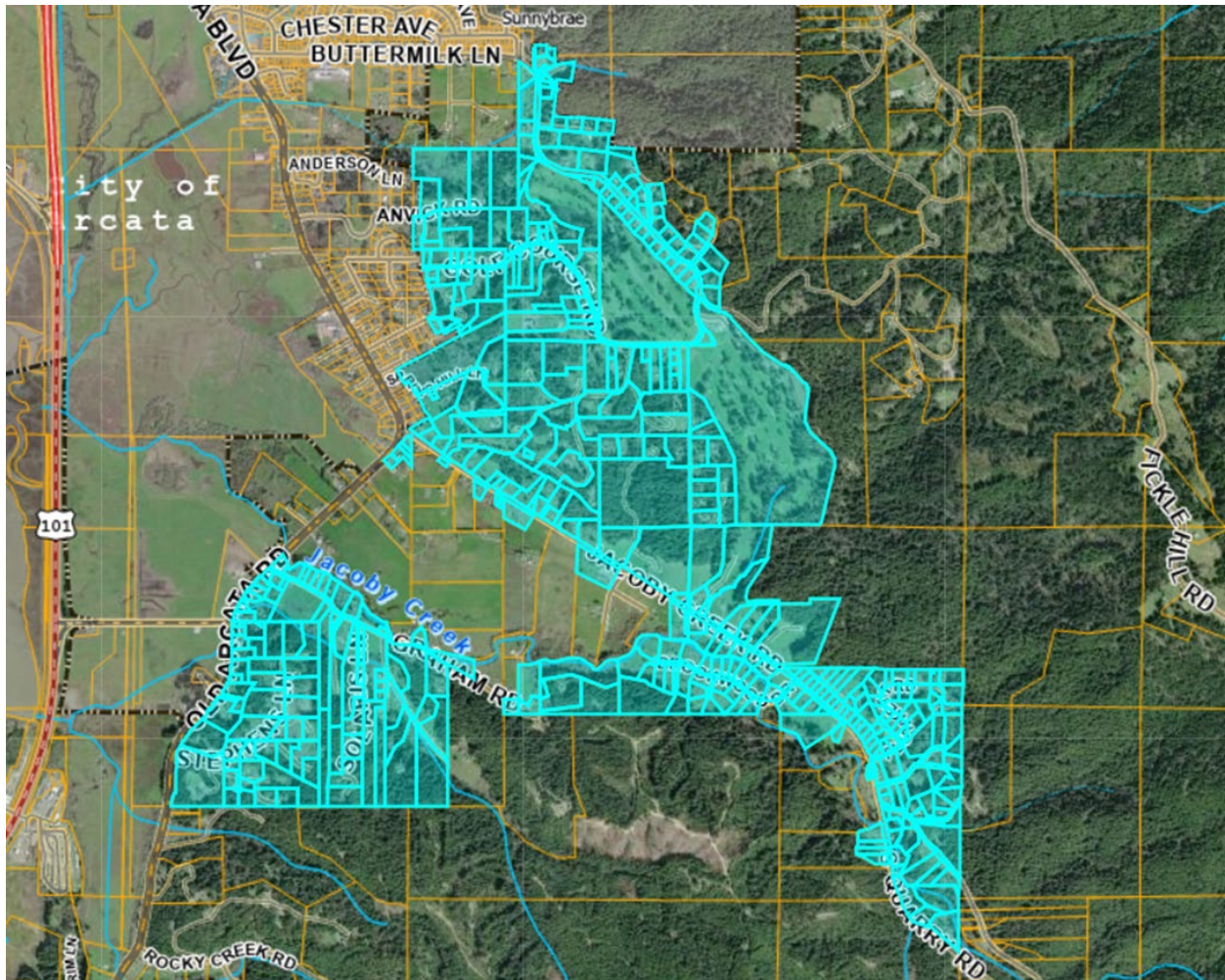


Figure 2: The image above shows all properties that are completely within the Urban Development Area as mapped by the Jacoby Creek Community Plan, and all properties with only a Residential Estates land use designation. All highlighted parcels are subject to the limitations imposed by the policies referred to by the appellant as the “JCCP 5-acre limitation policies”.