

# ATTACHMENT 5

## SLOPES, STABILITY, SEISMIC SAFETY, AND HOUSING INVENTORY FIGURES

FIGURE 1 -SLOPE MAP



Note: The entire 2.30 acres of the Project Area contain slopes under 15%

FIGURE 2 - SLOPE INSTABILITY



Note: Project area rating is entirely Relatively Stable (0).

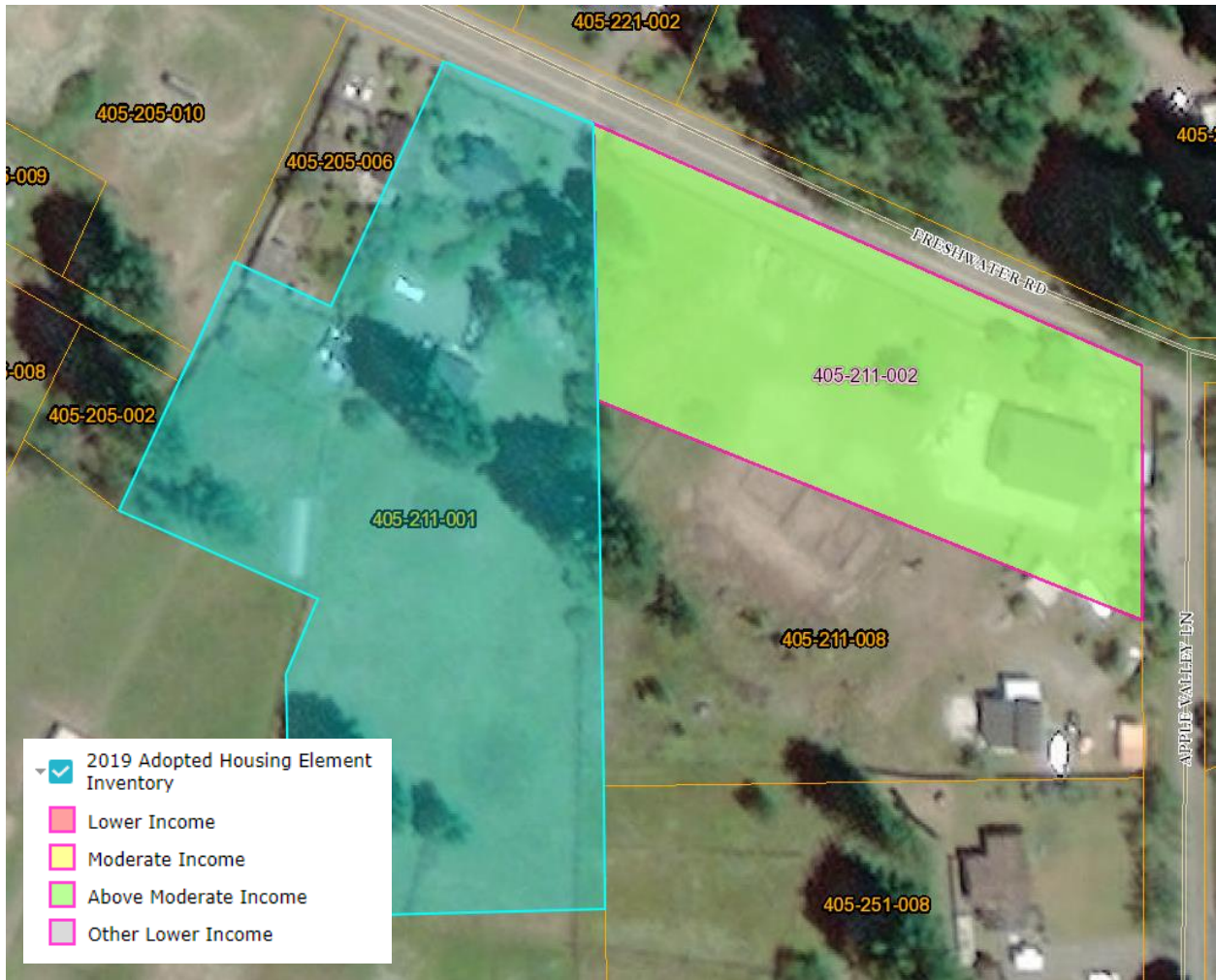
FIGURE 3 - HISTORIC LANDSLIDES



Note: The Project Area does not contain historic landslides



**FIGURE 4 - 2019 RHNA HOUSING INVENTORY AND LAND USE DESIGNATIONS**



Note: No RHNA Land Inventory sites are located within Project Area