

A Retirement, Remediation,
Relocation Project

Honeydew Ranch, LLC

Three Projects in Upper Mattole Canyon Creek with road systems that reached up to 20% slope and direct sediment delivery into Upper Mattole Canyon Creek, a class I water course and the head of (2) Class II water courses.

The restoration of these projects will assist in the recovery and improvement of the of the Mattole Watershed. Under the performance standards in Ordinance 2.0 these parcels are in the impacted watershed.

APN 221-111-015
Restored In 2019
Parcel enrolled in
RRR application
process since 2015

Future RRR site
to be restored in 2020 -
APN 221-121-016
APN 221-121-009

▶ Mattola Farms, LLC

APN 221-121-016

Upper Mattole Canyon Watershed

Pending Restoration

- ❖ (1) Decommissioned Cultivation Area that will re-connect a Class III Watercourse to its original configuration
- ❖ (1) Decommissioned Class II Stream Crossing with direct sediment delivery to Upper Mattole Canyon Creek
- ❖ 1217' of failing roadway that reaches 30+% slope in sections and is a direct delivery to Upper Mattole Canyon Creek
- ❖ Restoration of the cultivation area will require that 2100 CY of Cut/Fill be moved to fully restore the cultivation area and roadway



Mattole Meadows, LLC

APN 221-121-009

Upper Mattole Canyon Watershed

Pending Restoration

- ❖ Decommissioned Cultivation Area that will re-connect a class III to its original configuration
- ❖ Decommissioned 325' of roadway
- ❖ Cut/Fill 950 CY of material to restore the the cultivation area and road system



SoHum Gardens, LLC

Upper Mattole Canyon Watershed

APN 221-111-015

Restored in Summer of 2019

- ❖ Decommissioning of (3) Stream Crossings with direct sediment delivery to Upper Mattole Canyon Creek
- ❖ Decommissioning of (1) POD in a Class II Stream
- ❖ Decommissioned 2,280' of road system @ 20% + slope
- ❖ 7,350 CY material processed to Establish Pre-Existing Site Conditions
- ❖ 2,000 trees replanted & 185 lbs. of California native erosion seed applied
- ❖ 350 bails of straw, 1250 linear feet of straw wattles applied for erosion contrail
- ❖ 7 abandoned vehicles have been removed and disposed of by Eel River Transportation and Salvage
- ❖ Property has not been cultivated at since 2017

Hallowed Ground, LLC

APN 216-072-009

Harris Ranch Area

Pending Restoration

- ❖ Decommission 3 cultivation sites
- ❖ Upgrade of 1 Class II stream crossing to 100-year flood level
- ❖ 462 ft of sediment delivery caused by road system
- ❖ 1446 CY of Cut/Fill to restore cultivation area and road system
- ❖ Replanting and erosion control installed
- ❖ Post Restoration Monitoring for 3 years

Lina Farm LLC

APN 221-061-034

Salmon Creek Watershed

Pending Restoration

- Restoration of (5) cultivation sites
- Decommission (2) stream crossings
- Decommission 1093' of roadway
- 1550 CY Cut/Fill to restore cultivation area
- Decommission 50,000-gal pond constructed in SMA & realign watercourse
- 350,000-gal rain catchment pond will be left for fire suppression use

Salmon Creek Farm LLC

APN 221-081-005

Salmon Creek Watershed

Pending Restoration

- Decommission & restore (3) cultivation sites within SMA
- Decommission 744' of road system
- 900 CY Cut/Fill to restore cultivation sites & road system



Big River Farm LLC

APN 108-023-008

Pending Restoration

- Restoration of (4) cultivation sites
- Approximately .94 acres of disturbed cultivation area consisting of 22,000 SF of Greenhouses will be restored
- Decommission 1789' of roadway
- 3255 CY Cut/Fill to restore cultivation sites & roadway

Pre-Restoration APN 221-111-015 Cultivation Area Before Mountain Top Removal



Pre-Restoration
APN 221-111-015
Cultivation Area



Pre-Restoration APN 221-121-015 Failure of Uphill Slope on Road System



Pre-Restoration APN 221-111-015



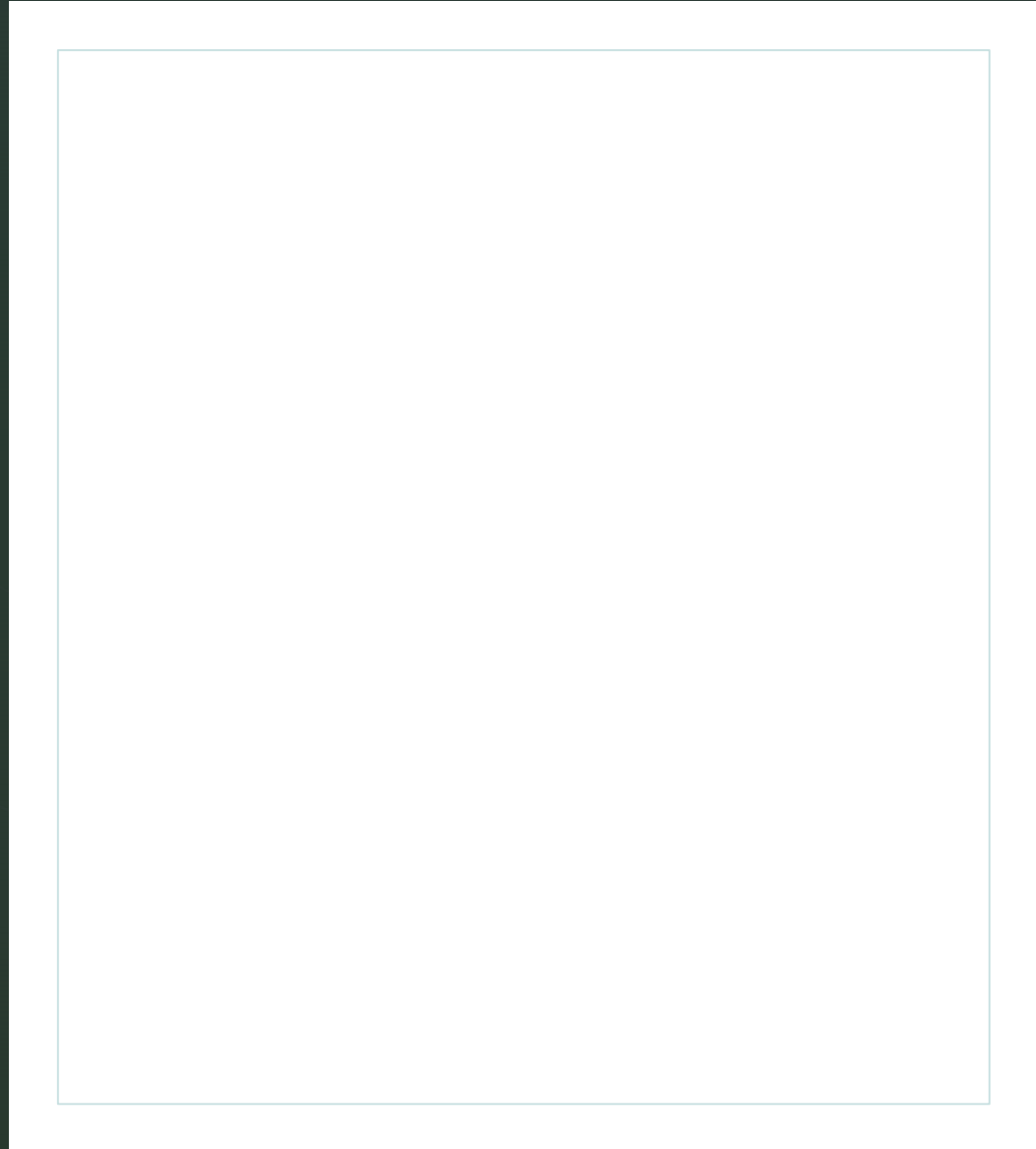
Pre-Restoration
APN 221-111-015
Road System Failure Causing Sediment Delivery to
Class I Watercourse



Pre-Restoration
APN 221-111-015
Sediment Delivery Caused by Road Failure



During Restoration
APN 221-111-015
Decommissioning
Road System



During Restoration
APN 221-111-015
Grading Completed &
Erosion Control Plan
Applied



Post Restoration
APN 221-111-015
Decommissioned Road System to Decommissioned
POD below Cultivation Area



Post Restoration
APN 221-111-015
Decommissioned Cultivation Area/Mountain Top Removal



Post Restoration APN 221-111-015

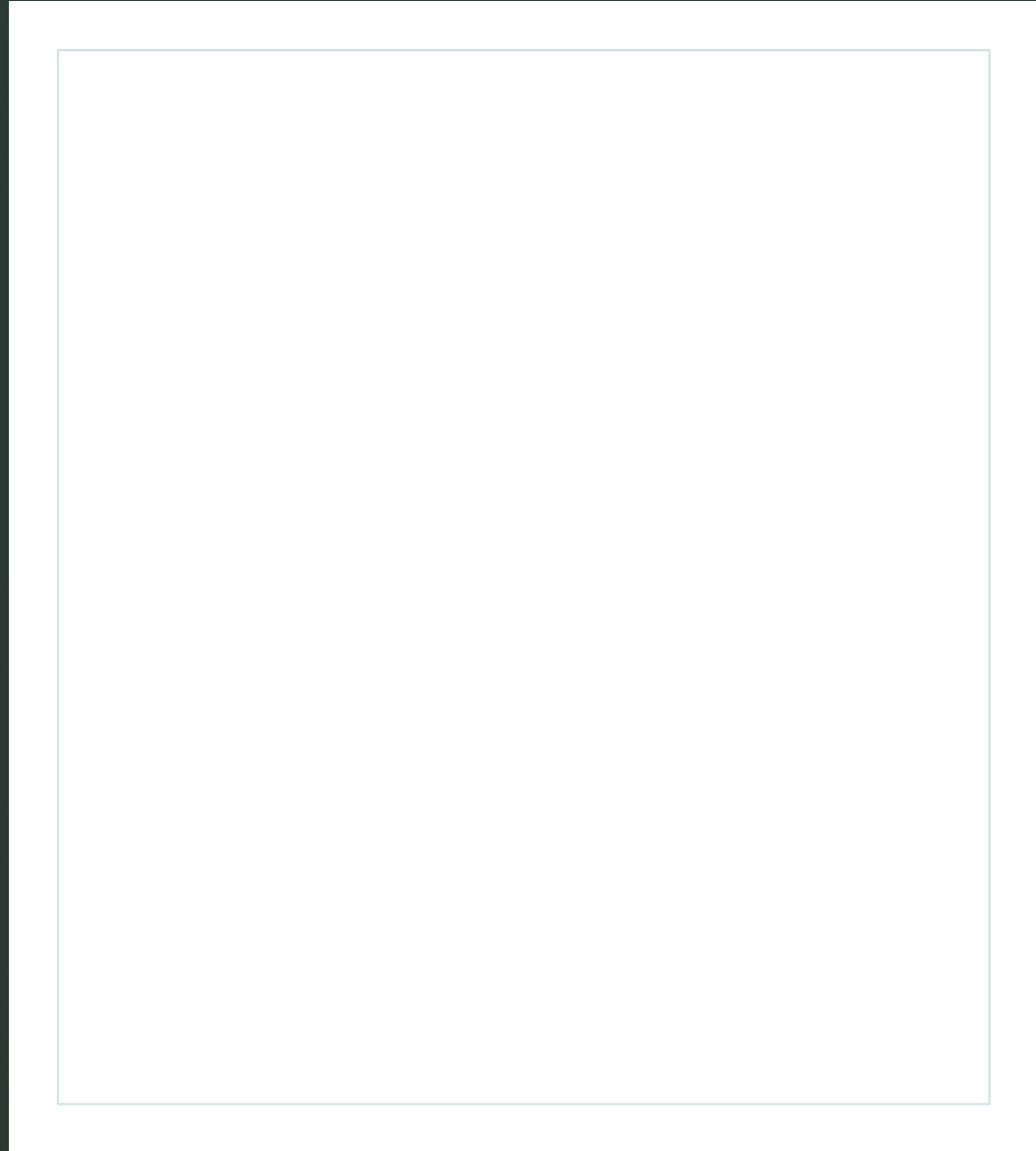
▶ Hill Top Removal - Lower Cultivation Area & Start of Road System



Post Restoration
APN 221-111-015
Replanting Trees



Post Restoration
APN 221-111-015
Mountain Top
Removal



APN 221-111-015

Full Dump Truck of Scrap Metal Removed



APN 221-111-015
Trucks & Trailer Off Hauled



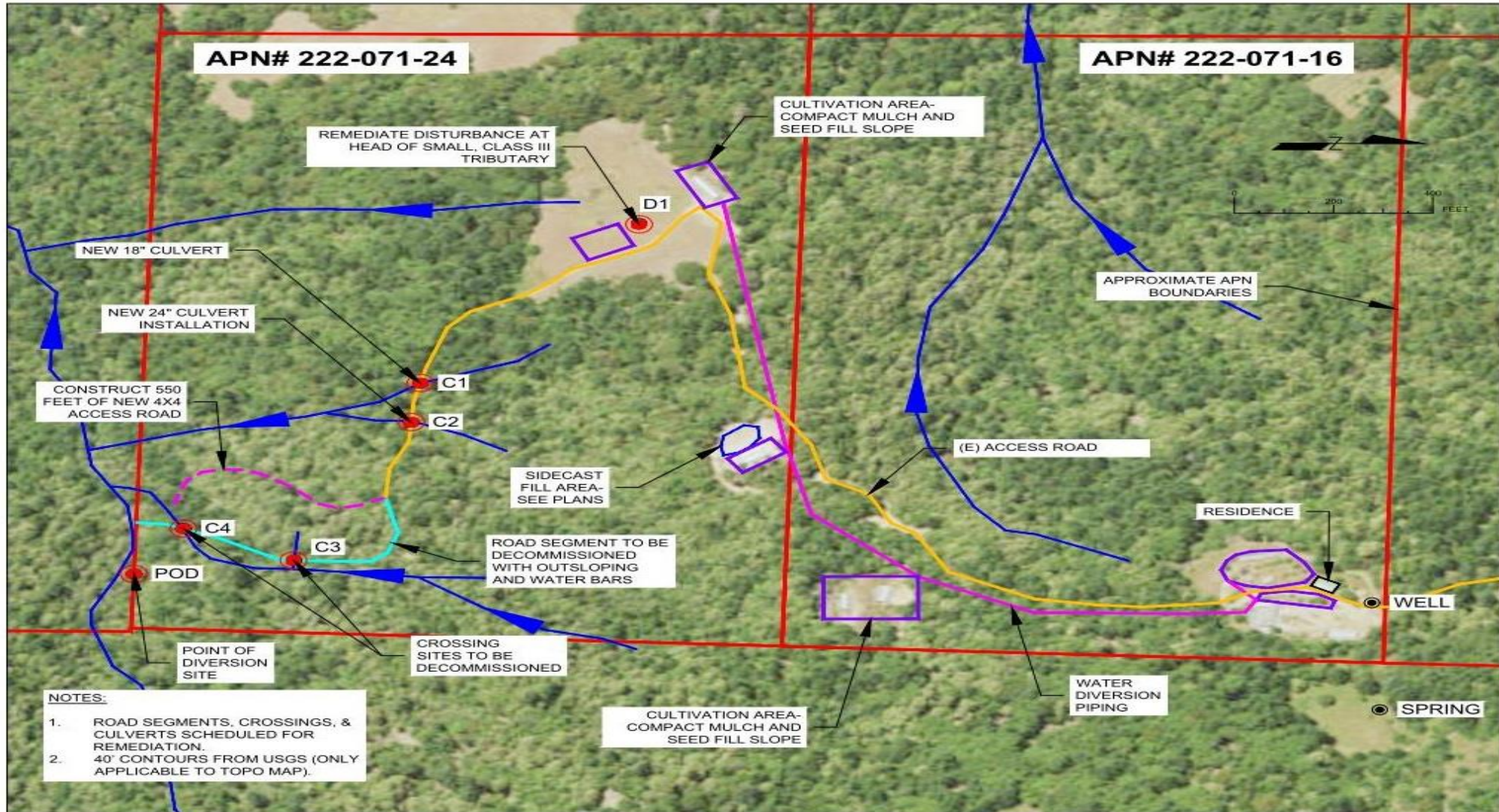
Sprowl Creek Restoration Projects

APN's: 222-071-016 & 222-071-024

Scope of work:

- Decommissioned (4) pre-existing cultivation areas totaling
- Decommissioned (5) water crossings & (1) POD
- Decommissioned .5 miles of road system, remaining road system was left for fire suppression use
- 5,450 CYD of material was processed during restoration to establish pre-existing site conditions
- 675 Douglas Fir & 88 Maple/Ash/Alder trees replanted

APN# 222-071-16 AND 222-071-24 SITE MAP



- NOTES:**
1. ROAD SEGMENTS, CROSSINGS, & CULVERTS SCHEDULED FOR REMEDIATION.
 2. 40' CONTOURS FROM USGS (ONLY APPLICABLE TO TOPO MAP).

	4X4 ACCESS ROAD		STRUCTURE		DFW 1602 PERMIT SITES
	ROAD TO BE DECOMMISSIONED		PRIMARY PARCEL		SIDECAST FILL AREA
	(E) ACCESS ROAD		ADJACENT PARCEL		CLASS III TRIBUTARY
	APPROXIMATE LOCATION OF WATER DIVERSION PIPING		CULTIVATION AREA		

Pre-Restoration APN 222-071-016 Cultivation Area & Spoiled Soil



Pre-Restoration
APN 222-071-016
POD Before Decommissioning



During Restoration
APN 222-071-016
Cultivation Area



During Restoration APN 222-071-016

Trailer Found Buried Under Flat During Restoration Work & Off Hauled



During Restoration APN 222-071-016

- Stabilized down slope
- Compacted hillside
- Applied erosion control
- Reseeded & planted trees



Post Restoration
APN 222-071-016
Decommissioned Road
System



Post Restoration
APN 222-071-016
Cultivation Area



Pre-Restoration
APN 222-071-024
Road to Cultivation Area 2



Pre-Restoration
APN 222-071-024
Cultivation Area 1 Before Mountain Top Removal



Pre- Restoration
APN 222-071-024
Down Hill Slope Before Mountain Top Removal



Pre-Restoration
APN 221-071-024
Road to Cultivation Area Causing Sediment Delivery



During Restoration
APN 222-071-024
Mountain Top Removal



Post Restoration
APN 222-071-024
Mountain Top Removal



Post Restoration
APN 222-071-024
Decommissioned Road



Post Restoration
APN 222-071-024
Mountain Top Removal



Post Restoration
APN 222-071-024
Mountain Top Removal



Post Restoration
APN 222-071-024
Mountain Top Removal



Pre-Restoration
APN 222-071-024
Cultivation Area 2



During Restoration APN 222-071-024

▶ Cultivation Area 2 - Erosion Control Being Applied



Post Restoration
APN 222-071-024
Cultivation Area 2



Pre-Restoration
APN 222-071-024
Direct Sediment Delivery to Indian Creek



Figure 2. Steep road segment and intermittent watercourse diversion immediately adjacent to a perennial Class II stream.

Pre-Restoration

APN 222-071-024

- ▶ POD in Indian Creek Decommissioned



Post Restoration
APN 222-071-024
Decommissioned Road to
Indian Creek



Post Restoration
APN 222-071-024
Decommissioned Road to Indian Creek



Post Restoration
APN# 222-071-024
Decommissioned Road to Indian Creek



Pre-Restoration
APN 222-071-024
Spoiled Soil Pile



Post-Restoration
APN 222-071-024
Spoiled Soil Off Hauled &
Recycled



▶ Cannabis Development Surrounding Honeydew Ranch LLC (Continued)

- ❖ APN: 107-311-001 & 107-311-002
- ❖ Cultivation Area:
 - ❖ 43,520 SF Existing Outdoor
 - ❖ 235,640 SF (5.41 acres) New Outdoor
- ❖ Water Source: 4 groundwater wells
 - ❖ Wells #1, 2 & 3 lie within 200' of the Mattole River and/or Honeydew Creek
- ❖ Water Storage: 55,000 gallons
- ❖ Property borders appellant's property on two sides
- ❖ Approved: 7/7/2015

▶ Cannabis Development Surrounding Honeydew Ranch LLC (Continued)

- ❖ APN 107-272-007
- ❖ Cultivation Area: 43,330 SF Total
 - 10,000 SF Existing - 5,000 SF Outdoor, 5,000 SF Mixed Light
 - 13,330 SF Outdoor (RRR)
 - 20,000 SF Mixed Light (RRR)
- ❖ Irrigation Source:
 - ❖ Spring Fed Pond (Tributary to Mattole River)
 - ❖ Proposed 1 million-gallon Rain Catchment Pond
- ❖ On-site processing in proposed 2,400 SF processing building
- ❖ Approved: 6/20/2019

Cannabis Development Surrounding Honeydew Ranch LLC (Continued)

- ❖ APN: 107-104-010
- ❖ Cultivation Area: 31,750 SF Existing Outdoor
- ❖ Irrigation Source:
 - ❖ Diversion in Woods Creek
 - ❖ Proposed 1 million-gallon rainwater catchment pond
- ❖ Water Storage:
 - ❖ (2) 10k-gal Tanks
 - ❖ (2) Bladders totaling 420,000 gallons
- ❖ Approved: 10/17/2019

▶ Cannabis Development Surrounding Honeydew Ranch LLC (Continued)

- ❖ APN: 107-272-009
- ❖ Cultivation Area: 10,000 SF New Mixed Light & 20,000 SF Mixed Light (RRR)
 - ❖ 10.5% of property
- ❖ Irrigation Source: Groundwater Well
 - ❖ Depth: 100'
 - ❖ Draw Down: 83'
 - ❖ GPM: 10
- ❖ Water Storage: 20,000 gallons
- ❖ Shares property line with Honeydew Ranch LLC
- ❖ Approved: 11/15/2019

Cannabis Development Surrounding Honeydew Ranch LLC (Continued)

- ❖ APN: 107-283-001
- ❖ Cultivation Area: 30,000 SF Total
 - ❖ 400 SF Existing Mixed Light w/ proposal to increase to 10,000 SF
 - ❖ 20,000 SF Mixed Light (RRR) & 20,000 SF Outdoor (RRR)
 - ❖ 20.4% of land on parcel
- ❖ Irrigation Source:
 - ❖ Spring Diversion
 - ❖ 300-gal Rain Catchment Pond within SMA of Class II Stream
 - ❖ Proposed 620,000-gal Rain Catchment Pond
- ❖ Water Storage: 21,000 gallons
- ❖ Approved: 6/24/2020

COMMERCIAL CANNABIS ACTIVITY SURROUNDING HONEYDEW RANCH LLC



Cannabis Development Surrounding Honeydew Ranch, LLC

